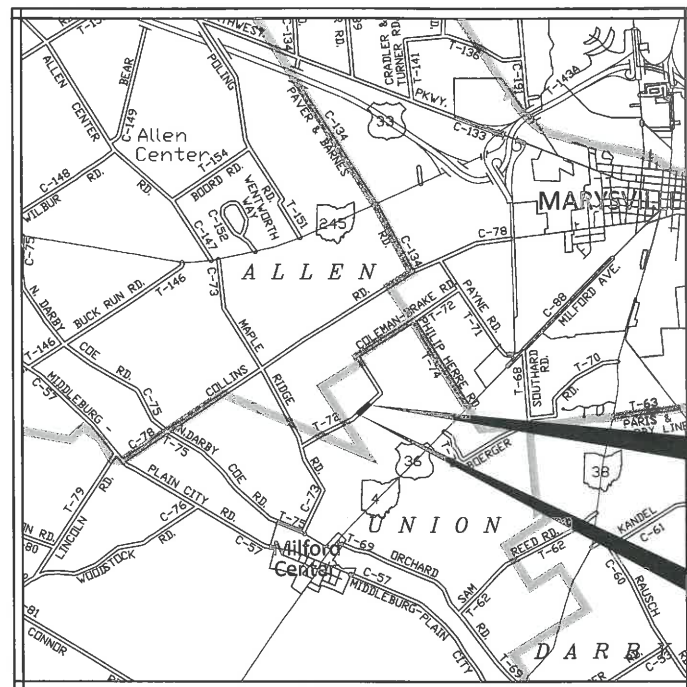


UNION TOWNSHIP
UNION COUNTY



BEGIN PROJECT
STA. 1+03
SLD = 0.607

- DESIGN DESIGNATION

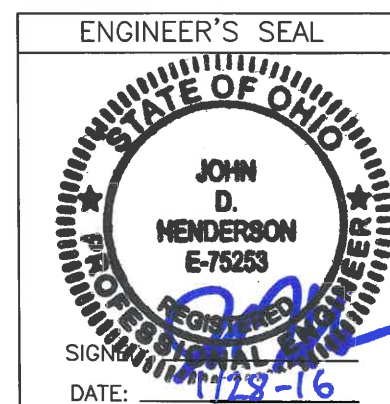
CURRENT ADT (2013).	308
DESIGN YEAR ADT (2035).	380
DESIGN HOURLY VOLUME (2035).	38
D (DIRECTIONAL DISTRIBUTION).	55%
T (TRUCKS 24 HOUR B & C).	3%
DESIGN SPEED.	55 MPH
LEGAL SPEED.	55 MPH (NON-POSTED)
FUNCTIONAL CLASSIFICATION.	LOCAL

40 MPH VERITCAL CURVE

**TWO WORKING DAYS
BEFORE YOU DIG**
CALL 1-800-362-2764 (TOLL FREE)
OHIO UTILITIES PROTECTION
SERVICE
Non-members must be called directly

PLAN PREPARED BY:

UNION COUNTY ENGINEER
233 WEST SIXTH ST.
MARYSVILLE, OHIO 43040
(937)-645-3018

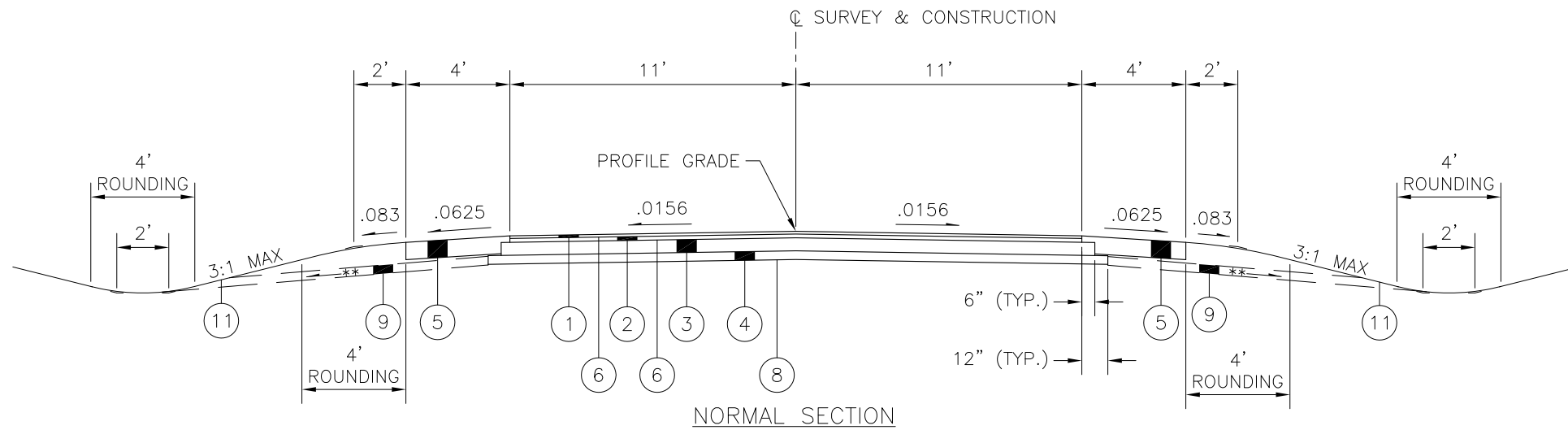
[illegible]

THE STANDARD SPECIFICATIONS OF THE STATE OF OHIO,
DEPARTMENT OF TRANSPORTATION, INCLUDING CHANGES AND
SUPPLEMENTAL SPECIFICATIONS LISTED IN THE PROPOSAL SHALL
GOVERN THIS IMPROVEMENT.

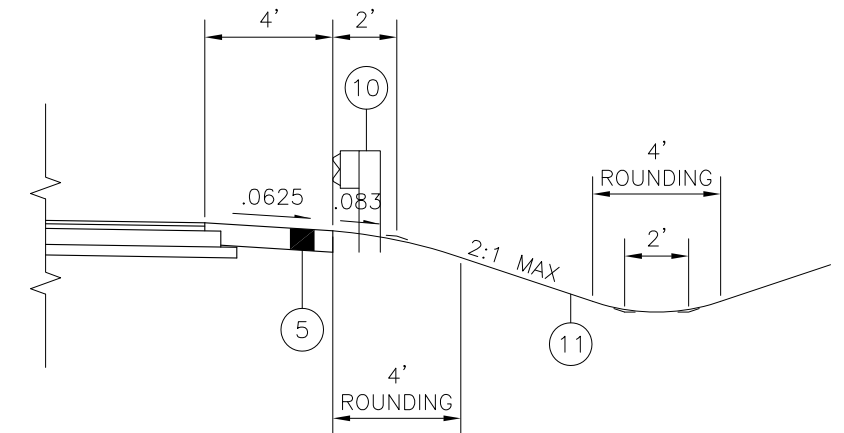
[illegible]

STAGE 1 PLAN & PROFILE
NOT FOR CONSTRUCTION

UNI-TR72C-0.683

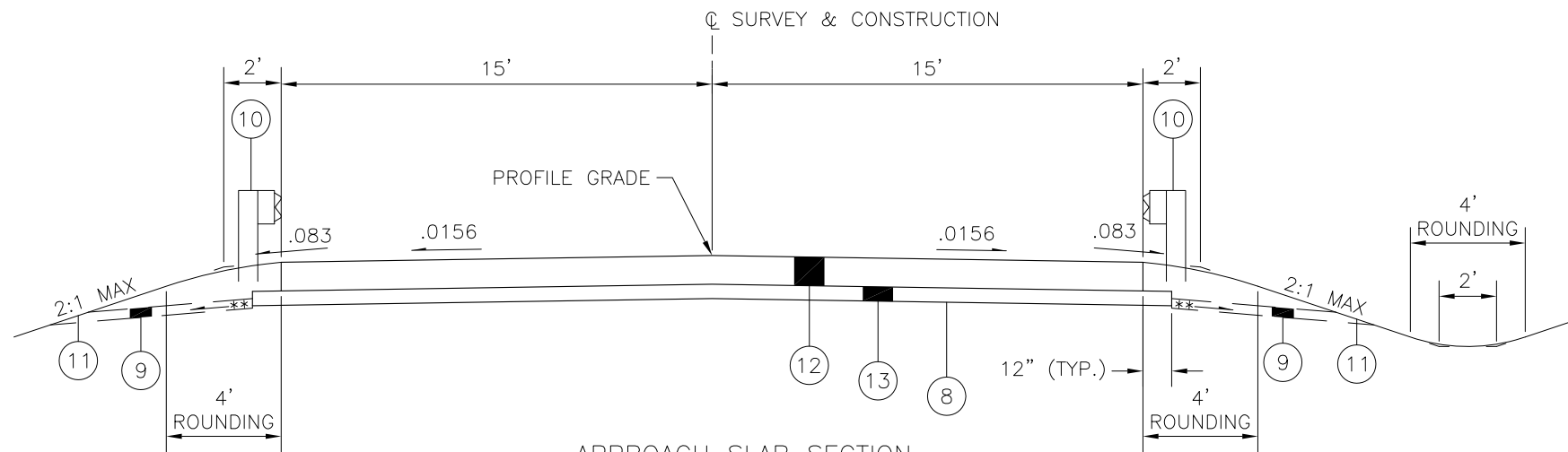


NORMAL SECTION



GUARDRAIL SECTION

** .042 MINIMUM .083 DESIRABLE



APPROACH SLAB SECTION

LEGEND

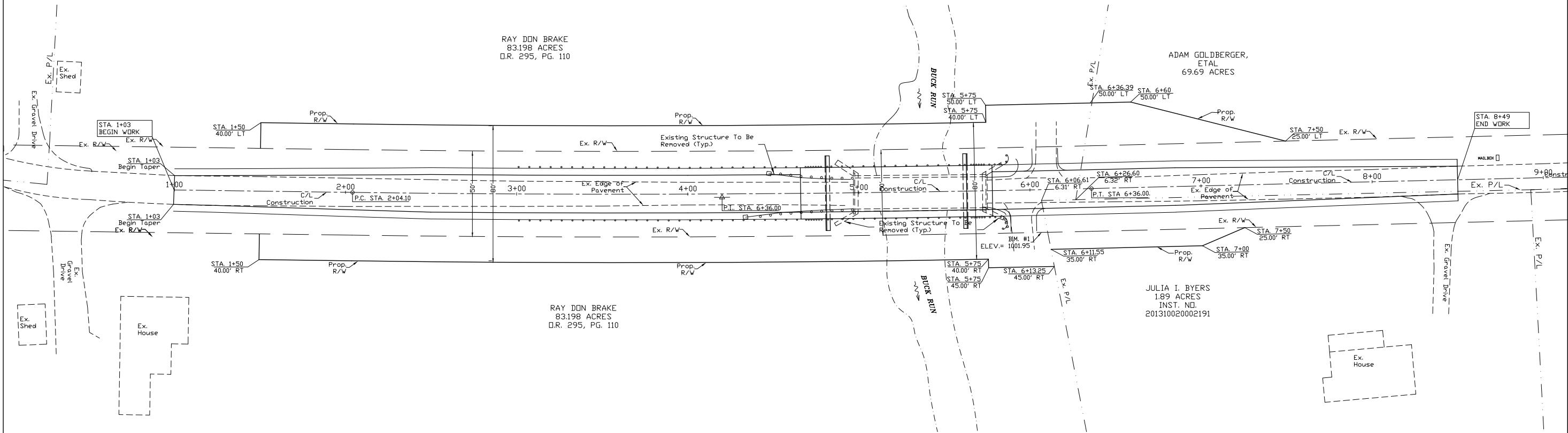
- ① ITEM 441 1 1/4" ASPHALT CONCRETE SURFACE COURSE, TYPE 1, PG64-22
- ② ITEM 441 1 3/4" ASPHALT CONCRETE INTERMEDIATE COURSE, TYPE 2, PG64-22
- ③ ITEM 301 4" BITUMINOUS AGGREGATE BASE, PG64-22
- ④ ITEM 304 6" AGGREGATE BASE
- ⑤ ITEM 617 8" STABILIZED CRUSHED AGGREGATE
- ⑥ ITEM 407 TACK COAT FOR INTERMEDIATE COURSE (0.075 GAL./SQ. YD.)
- ⑧ ITEM 203 SUBGRADE COMPACTION
- ⑨ ITEM 605 AGGREGATE DRAINS
- ⑩ ITEM 606 GUARDRAIL, TYPE 5
- ⑪ ITEM 870 SEEDING & MULCHING
- ⑫ ITEM 611 REINFORCED CONCRETE APPROACH SLAB
- ⑬ ITEM 304 6" AGGREGATE BASE

TYPICAL SECTIONS

UNI-TR72-0.683

CURVE DATA
P.I. STA. 6+36.00
 $\Delta = 2.16^\circ$
 $Dc = 0.5'$
 $R = 11459'$
 $T = 215.97'$
 $Lc = 431.89'$
 $E = 2.04'$
 $Smax = 0$
P.C. STA 2+04.10
P.T. STA 6+36.00
DESIGN SPEED = 55MPH

BENCHMARK
B.M. #1 Pony spike in power pole located
on northeast side of the existing
bridge and being 23.5 feet right of
station 6+05
ELEV. = 1001.95



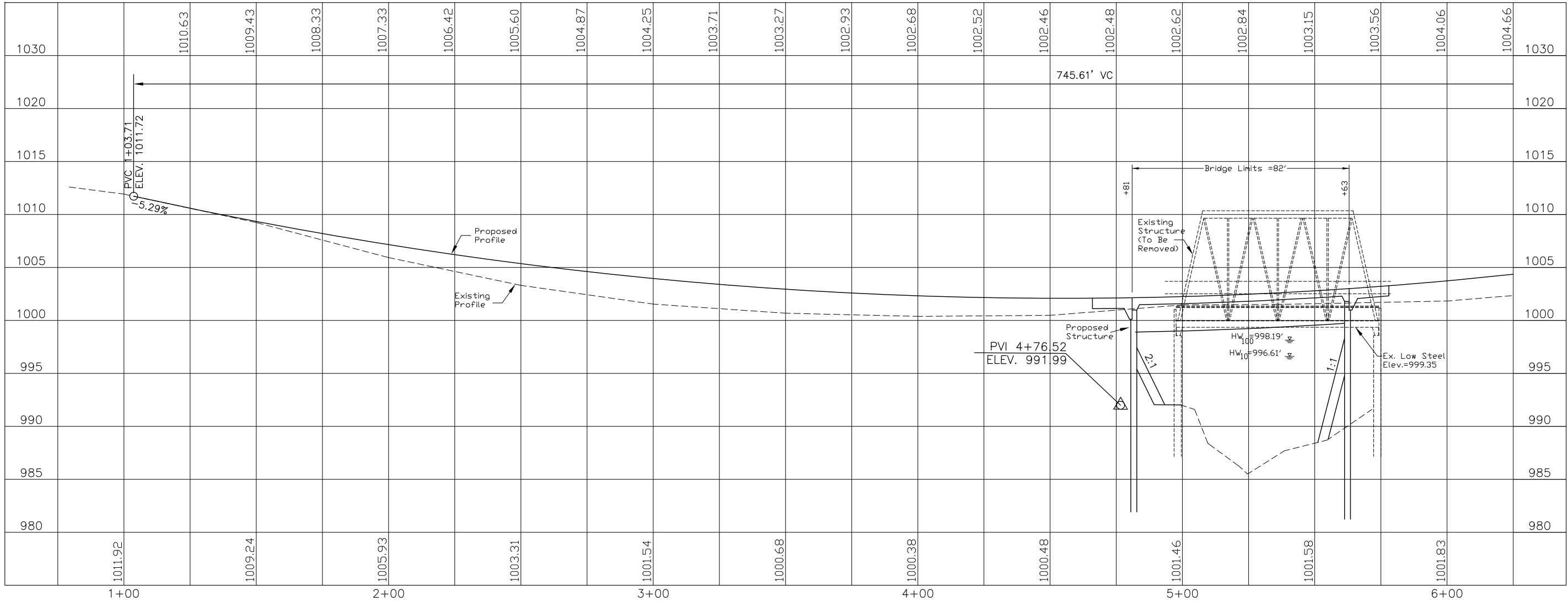
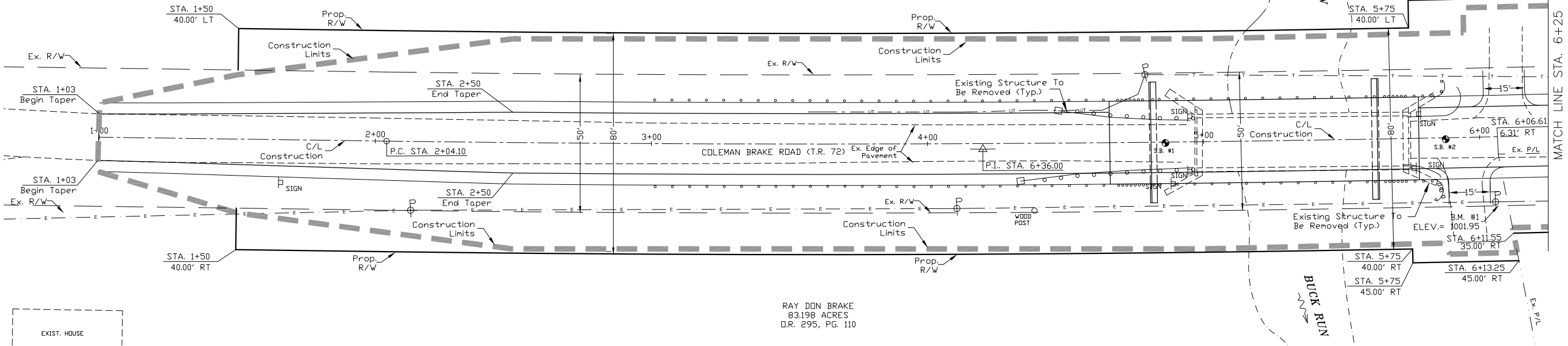
CURVE DATA
P.I. STA. 6+36.00
 $\Delta = 2^\circ 9' 34.2''$
 $D_c = 0.5'$
 $R = 11459'$
 $T = 215.97'$
 $L_c = 431.89'$
 $E = 2.04$
 $S_{max} = 0$
P.C. STA 2+04.10
P.T. STA 6+36.00
DESIGN SPEED = 55MPH

EXISTING STRUCTURE
TYPE: SINGLE SPAN PONY TRUSS
ON CONCRETE ABUTMENTS
SPAN: 77'±
ROADWAY: 18'± F/F RAIL
SKEW: NONE
ALIGNMENT: TANGENT
CROWN: NONE
LOADING: 22 TON LIMIT
YEAR CONSTRUCTED: 1923
CONDITION: POOR
STRUCTURE NO.: 8031657

PROPOSED STRUCTURE
TYPE: SINGLE SPAN BRIDGE
ON REINFORCED CONCRETE
ABUTMENTS
SPAN: 1 SPAN 82'
ROADWAY: 30' F/F RAIL
SKEW: 0° RF
ALIGNMENT: TANGENT
LOADING: HL-93
FWS=60 PSF
APPROACH SLAB: AS-1-81
STRUCTURE NO.: 8031658

RAY DON BRAKE
83.198 ACRES
D.R. 295, PG. 110

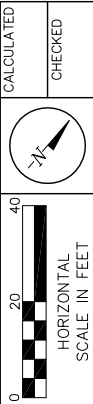
RAY DON BRAKE
83.198 ACRES
D.R. 295, PG. 110



PLAN AND PROFILE
STA. 1+00 - 6+25

UNI-TR72-0.683

4
8



CALCULATED

CHECKED

