

**TAYLOR TP.  
UNION COUNTY  
1900**

# APPRAISER'S OATH.

The State of Ohio, Union County, ss.

I, W. S. Rogers Land Appraiser for  
Taylor Township, in the County of Union, and State of Ohio, do solemnly swear

that the return to which this is attached contains a correct description of each parcel of Real Property, within said district, as far as I have been able to ascertain the same, and that the value attached to each parcel in said return is, as I verily believe, the full value thereof. Estimated agreeably to the rules prescribed therefor in the act for levying taxes on all property of this State, according to its true value.

Signed, W. S. Rogers Appraiser of said Township.

Sworn and subscribed to before me, the undersigned authority, this

14 day of August A. D. 1900.

Signed, D. P. Edwards Deputy Auditor of said County.

TREASURER

Employ	
2	
3 day o	
4	
7 day o	
8	
13 day o	
14	
17 day o	
18	
18 day o	
20	
21 day o	
23	
24 day o	
25	
26 day	
27	
28 day o	
30	
1 day o	
2	
3 day o	
4	
5 day o	
7	
8 day o	
9	
10 day o	
11	
12 day o	
14	
15 day o	
16	
17 day o	
18	
19 day o	
21	
22 day o	

R  
W. S. Rogers

in full of the  
 \$ 122 00

# APPRAISER'S ACCOUNT.

TREASURY OF UNION COUNTY.

To *W. S. Rogers* Land Appraiser of *Taylor* Township, Dr.

THE DATE OF EACH DAY	
Employed in making said Appraisement, was as follows:	
<i>2</i> day of <i>March</i>	<i>23</i> day of <i>June</i>
<i>3</i> day of <i>April</i>	<i>24</i> day of <i>June</i>
<i>4</i> day of <i>April</i>	<i>25</i> day of <i>June</i>
<i>5</i> day of <i>April</i>	<i>26</i> day of <i>June</i>
<i>6</i> day of <i>April</i>	<i>27</i> day of <i>June</i>
<i>7</i> day of <i>April</i>	<i>28</i> day of <i>June</i>
<i>8</i> day of <i>April</i>	<i>29</i> day of <i>June</i>
<i>9</i> day of <i>April</i>	<i>30</i> day of <i>June</i>
<i>10</i> day of <i>April</i>	<i>1</i> day of <i>July</i>
<i>11</i> day of <i>April</i>	<i>2</i> day of <i>July</i>
<i>12</i> day of <i>April</i>	<i>3</i> day of <i>July</i>
<i>13</i> day of <i>April</i>	<i>4</i> day of <i>July</i>
<i>14</i> day of <i>April</i>	<i>5</i> day of <i>July</i>
<i>15</i> day of <i>April</i>	<i>6</i> day of <i>July</i>
<i>16</i> day of <i>April</i>	<i>7</i> day of <i>July</i>
<i>17</i> day of <i>April</i>	<i>8</i> day of <i>July</i>
<i>18</i> day of <i>April</i>	<i>9</i> day of <i>July</i>
<i>19</i> day of <i>April</i>	<i>10</i> day of <i>July</i>
<i>20</i> day of <i>April</i>	<i>11</i> day of <i>July</i>
<i>21</i> day of <i>April</i>	<i>12</i> day of <i>July</i>
<i>22</i> day of <i>April</i>	<i>13</i> day of <i>July</i>
<i>23</i> day of <i>April</i>	<i>14</i> day of <i>July</i>
<i>24</i> day of <i>April</i>	<i>15</i> day of <i>July</i>
<i>25</i> day of <i>April</i>	<i>16</i> day of <i>July</i>
<i>26</i> day of <i>April</i>	<i>17</i> day of <i>July</i>
<i>27</i> day of <i>April</i>	<i>18</i> day of <i>July</i>
<i>28</i> day of <i>April</i>	<i>19</i> day of <i>July</i>
<i>29</i> day of <i>April</i>	<i>20</i> day of <i>July</i>
<i>30</i> day of <i>April</i>	<i>21</i> day of <i>July</i>
<i>1</i> day of <i>May</i>	<i>22</i> day of <i>July</i>
<i>2</i> day of <i>May</i>	<i>23</i> day of <i>July</i>
<i>3</i> day of <i>May</i>	<i>24</i> day of <i>July</i>
<i>4</i> day of <i>May</i>	<i>25</i> day of <i>July</i>
<i>5</i> day of <i>May</i>	<i>26</i> day of <i>July</i>
<i>6</i> day of <i>May</i>	<i>27</i> day of <i>July</i>
<i>7</i> day of <i>May</i>	<i>28</i> day of <i>July</i>
<i>8</i> day of <i>May</i>	<i>29</i> day of <i>July</i>
<i>9</i> day of <i>May</i>	<i>30</i> day of <i>July</i>
<i>10</i> day of <i>May</i>	<i>31</i> day of <i>July</i>
<i>11</i> day of <i>May</i>	<i>1</i> day of <i>August</i>
<i>12</i> day of <i>May</i>	<i>2</i> day of <i>August</i>
<i>13</i> day of <i>May</i>	<i>3</i> day of <i>August</i>
<i>14</i> day of <i>May</i>	<i>4</i> day of <i>August</i>
<i>15</i> day of <i>May</i>	<i>5</i> day of <i>August</i>
<i>16</i> day of <i>May</i>	<i>6</i> day of <i>August</i>
<i>17</i> day of <i>May</i>	<i>7</i> day of <i>August</i>
<i>18</i> day of <i>May</i>	<i>8</i> day of <i>August</i>
<i>19</i> day of <i>May</i>	<i>9</i> day of <i>August</i>
<i>20</i> day of <i>May</i>	<i>10</i> day of <i>August</i>
<i>21</i> day of <i>May</i>	<i>11</i> day of <i>August</i>
<i>22</i> day of <i>May</i>	<i>12</i> day of <i>August</i>

For services rendered in appraising the Real Estate of said Township, for the year 1900, occupying *55* days, between the *2* day of *March* and the *16* day of *June* at \$ *2.00* per day, \$ *110.00*

And the said *W. S. Rogers* being duly sworn, solemnly declares that the number of days herein stated, were necessarily occupied in the appraisement of said Township, and that this account is in all respects just and true.

(Signed) *W. S. Rogers* Appraiser.

Sworn to and subscribed before me, this *14* day of *August* 1900.

(Signed) *D. B. Edwards* Deputy Auditor of said County.

Received, *Aug 14* 1900, of the Auditor of Union County, an order on the Treasurer of said County, for *One Hundred Twenty Two* Dollars, including previous payment + Postage of *00* Cents, in full of the above account.

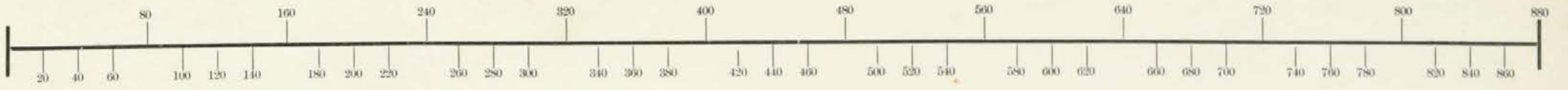
\$ *122.00* (Signed) *W. S. Rogers* Appraiser.

*Paid #75.00 June 14 1900*  
*" 47 Aug 14 1900 Postage of #10.00*  
*122*  
*1 Day with Board 2.00 Aug 14*

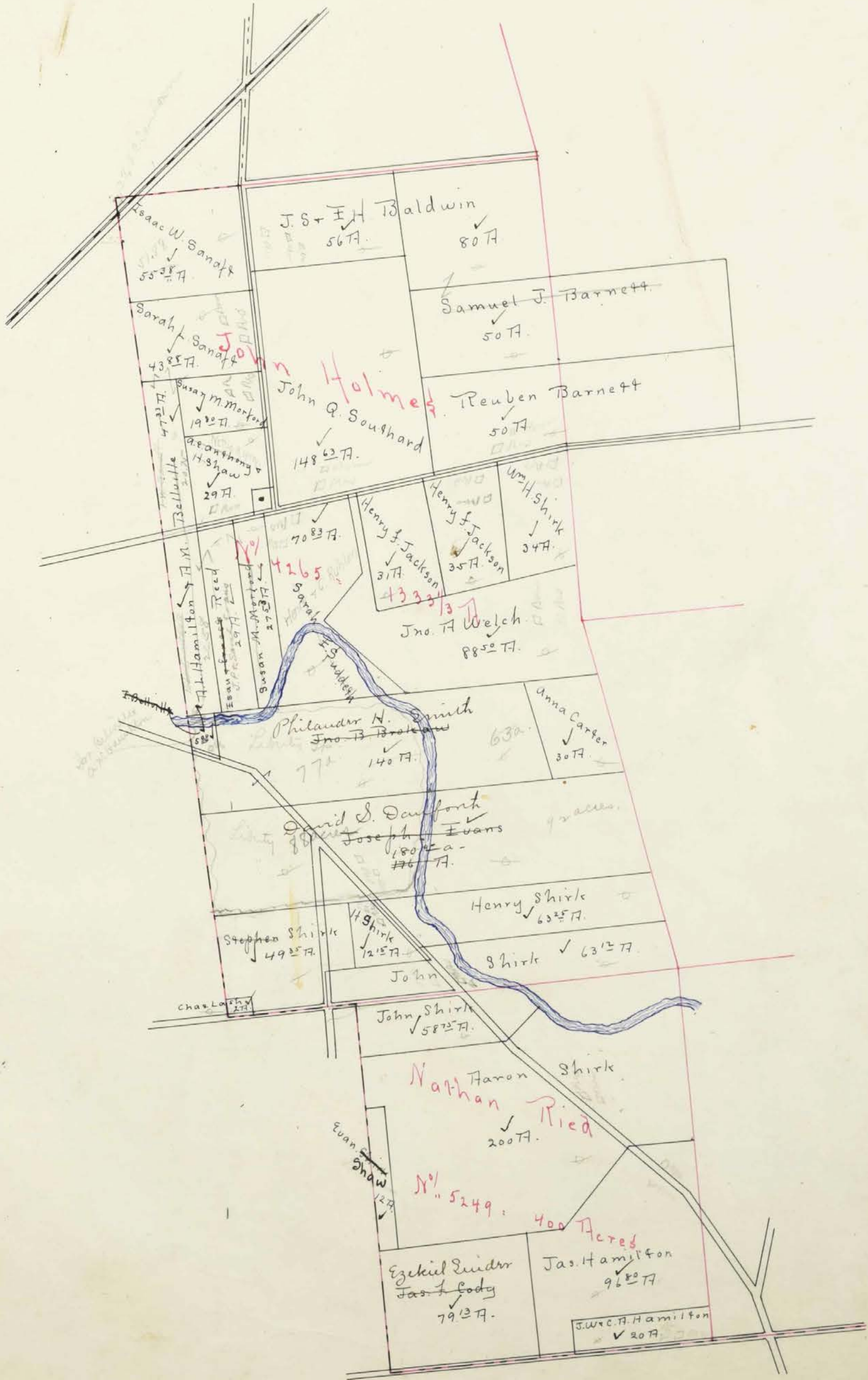
# OFFICIAL STATEMENT OF SURVEYS.

Page.	No. of Original Survey.	Original Quantity.	Original Proprietors.	Water Course.	Page.
	829	1000	Thomas Bowyer	Mill <sup>4</sup> / <sub>4</sub> of Bokes Creek	7
	3690	1000	Salvory Frazer	Bokes creek	9
	3691	1000	Salvory Frazer	Bokes creek	8
	✓ 4264	1333 <sup>1</sup> / <sub>3</sub>	John Holmes	Mill creek	3
	4265	1333 <sup>1</sup> / <sub>3</sub>	John Holmes	Mill creek	2
	4405	1333 <sup>1</sup> / <sub>3</sub>	Benjamin Grimes	Mill creek	3
	5249	400	Nathan Reid	Mill creek	2
	5386	990	Robert Means	Bokes creek	8
	5507	390	Baylor Hill	Blues creek	4
	5629 <sup>2</sup> / <sub>3</sub> 6493	1866 <sup>2</sup> / <sub>3</sub>	Robert Means	Mill creek	4 & 5
	- 5635	1200	James Gilmore	Bokes creek	6
	5646	750	Thomas Worthington	Bokes creek	10
	5778 - 5641 - 5806 <sup>2</sup> / <sub>3</sub> 6495	1828 <sup>2</sup> / <sub>3</sub>	Robert Means	Mill & Bokes creeks	6
	6156	250	Thomas Worthington	Bokes creek	7
	13593	100	badwallader Wallace	Bokes creek	7
	14632	530	James Taylor Jr.	Mill creek	4
	✓ 15015	52	James Galloway	Bokes creek	6

WE HEREBY CERTIFY, that the foregoing is a true Schedule of the Original Surveys, Quantities, Proprietors, and Water Courses, taken from the Official Records, in the offices of the Auditor and Surveyor of Union County, Ohio, in which are situate the Lands and Lots assessed for taxation in \_\_\_\_\_ Township, Union County, Ohio.



SCALE, 80 POLES TO AN INCH.

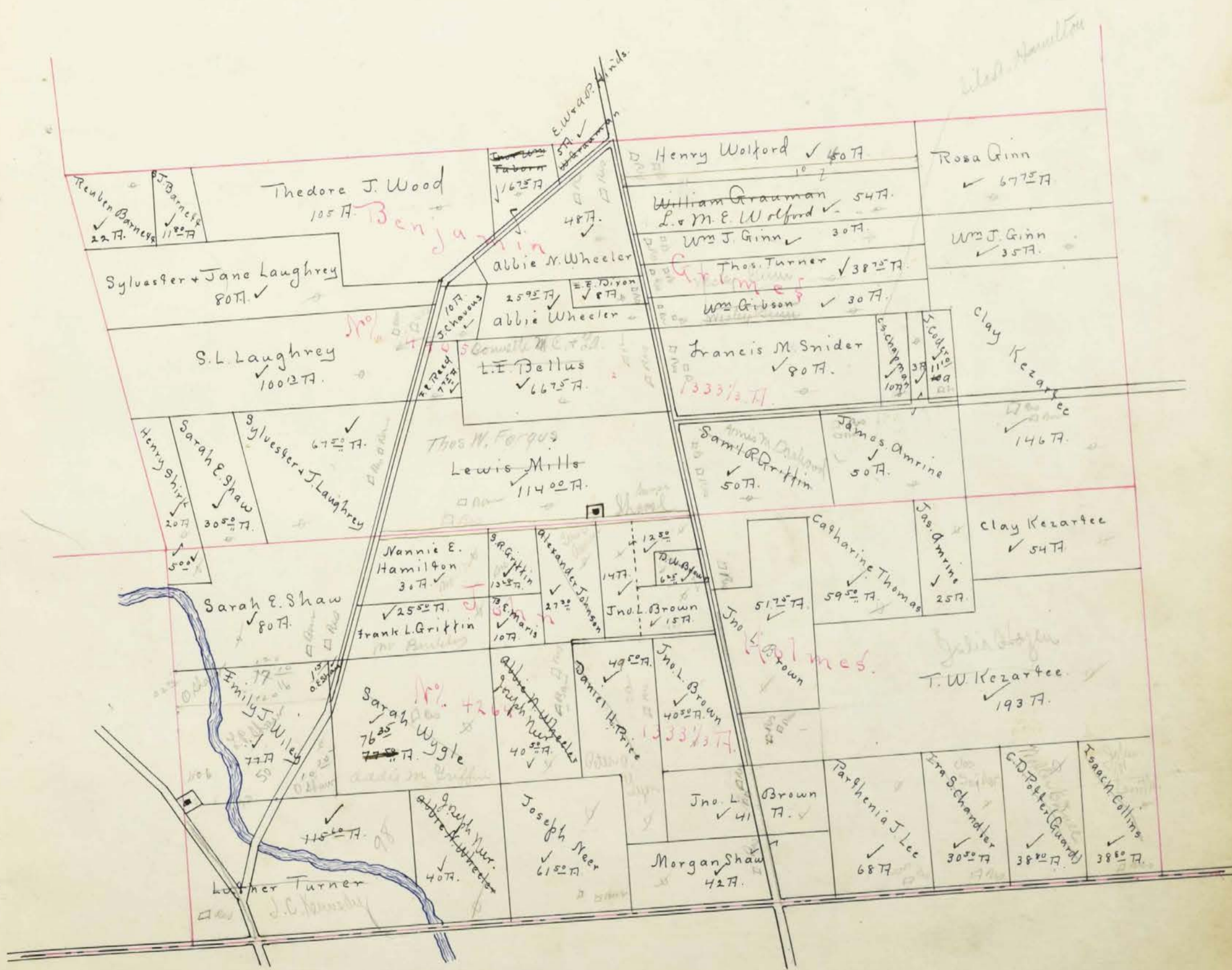


95  
90

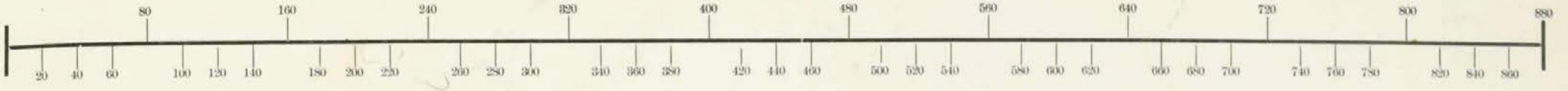
5



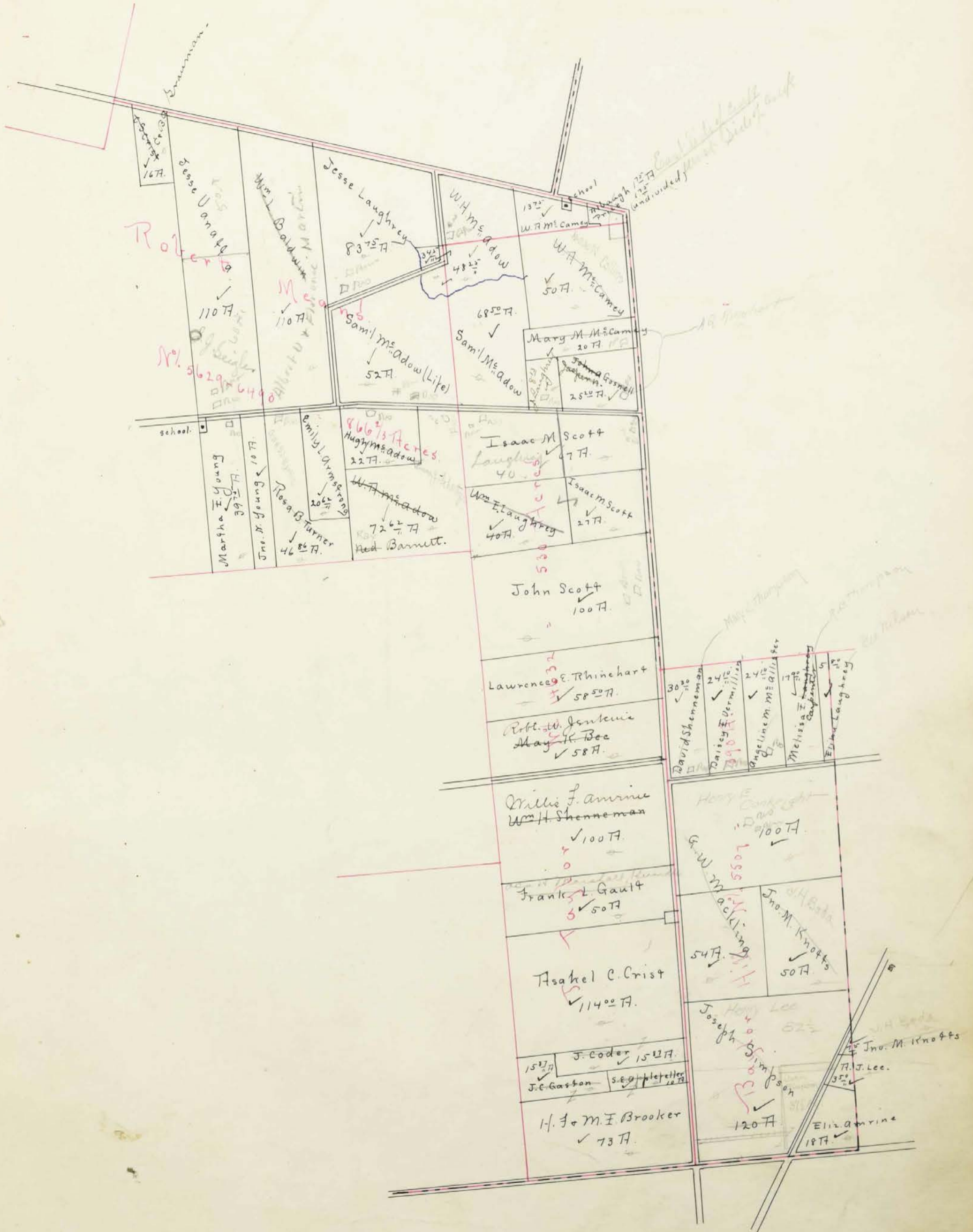
SCALE, 80 POLES TO AN INCH.

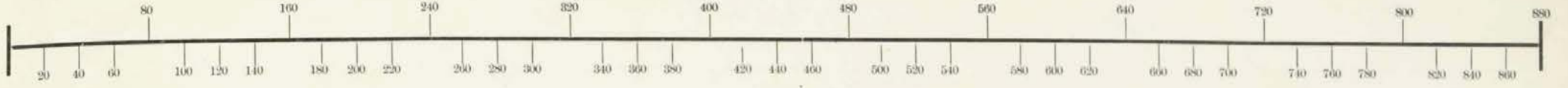


# Survey. No. 5629 & 6493 - 14632 - 5507 -



SCALE, 80 POLES TO AN INCH.

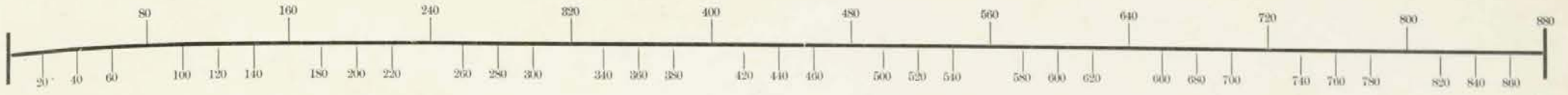




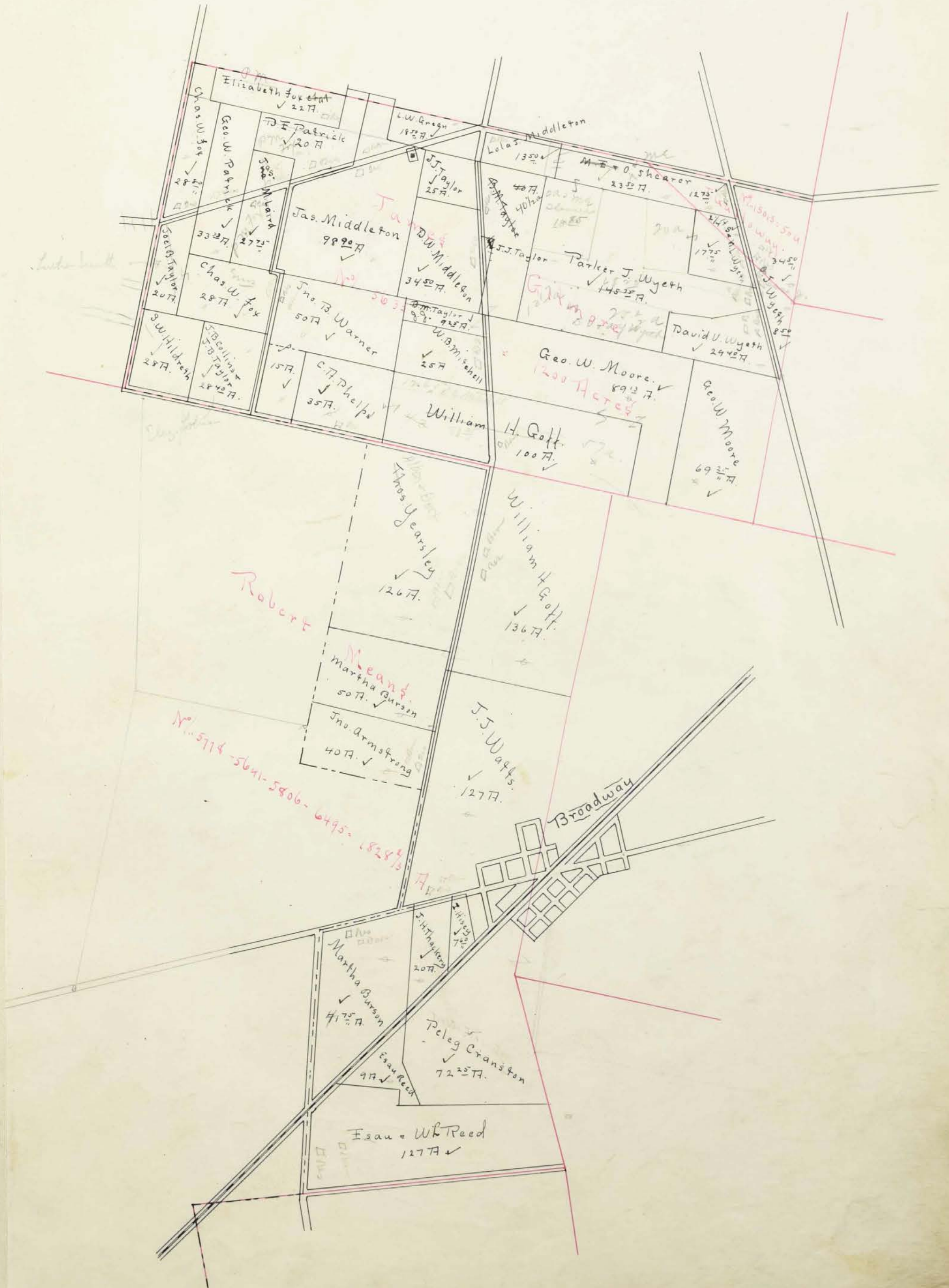
SCALE, 80 POLES TO AN INCH.

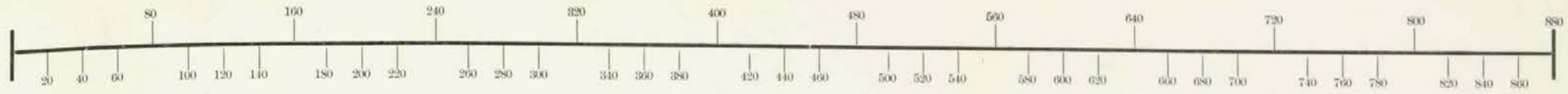






SCALE, 80 POLES TO AN INCH.







53.60  
15.60  
38.00

Map out here

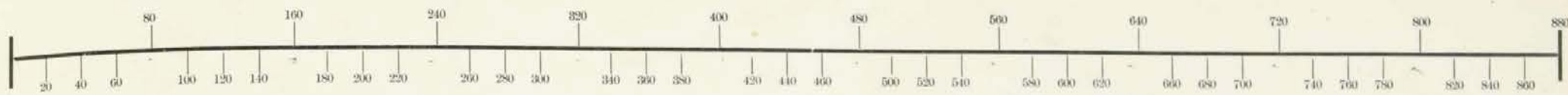
Sanil Hall + Caroline + Robinson  
James W. Robinson  
34140 A

5386  
Albert U. Martin  
45 A

Jas. W. White  
50 A

Luther L. Malister  
50 A





SCALE, 80 POLES TO AN INCH.



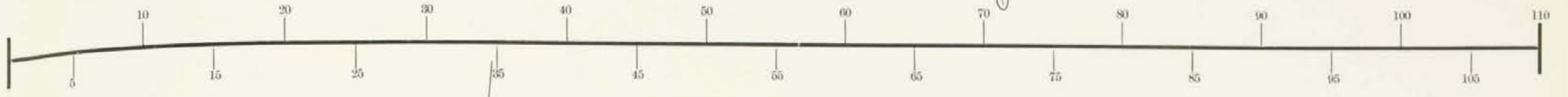
*Imperial Valley*  
*Imperial Valley*

*W. T. H. 625 A.*  
*W. T. H. 625 A.*

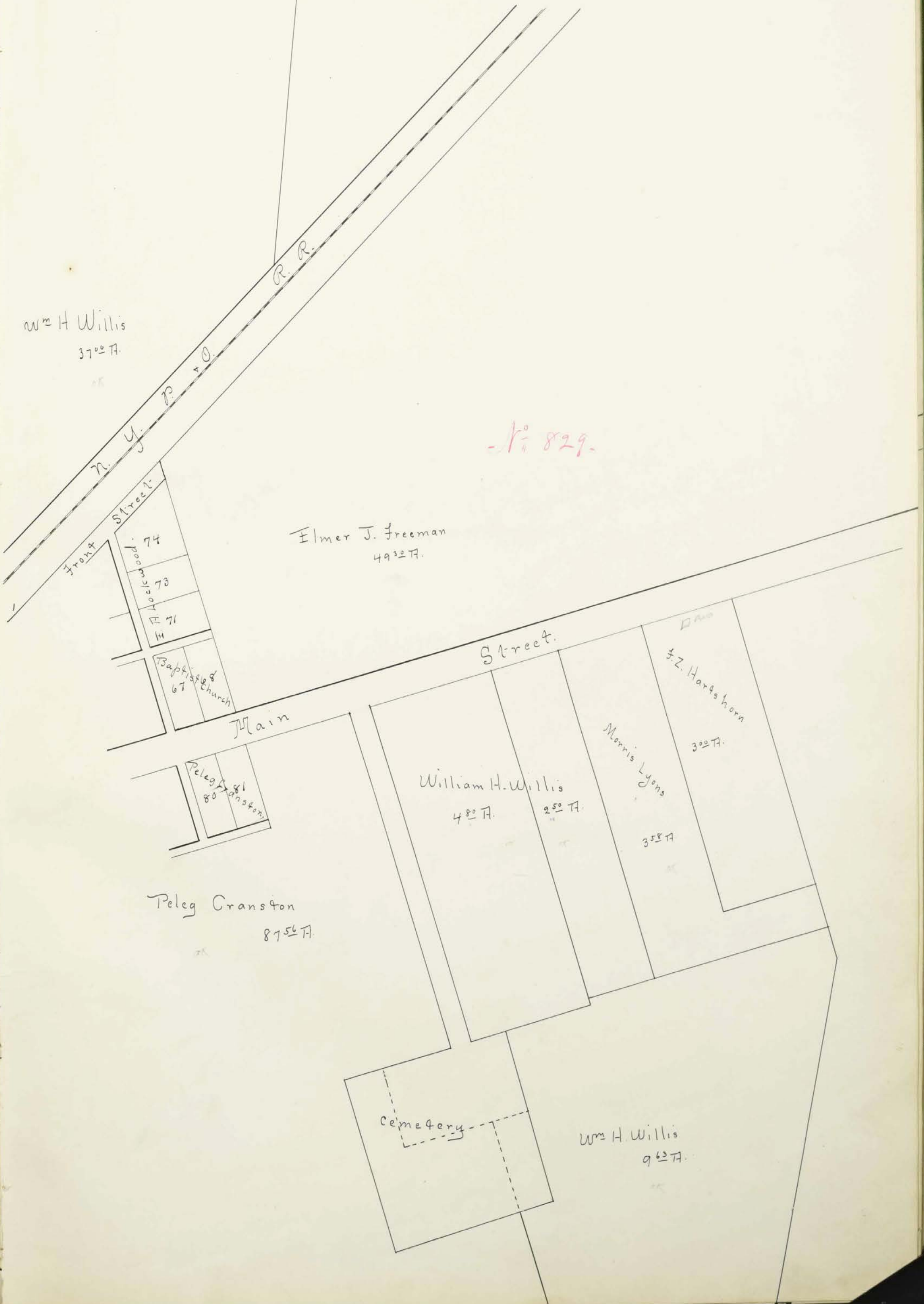
*W. T. H.*

*67*

# Town of *Broadway*



SCALE, 10 POLES TO AN INCH.



Wm H Willis  
37 1/2 A.

Elmer J. Freeman  
49 1/2 A.

- 1/2 829.

Peleg Cranston  
87 5/8 A.

William H. Willis  
48 A.

Morris Lyons  
35 1/2 A.

Z. Harkshorn  
30 A.

Cemetery

Wm H. Willis  
9 1/2 A.

# Town of *Broadway*



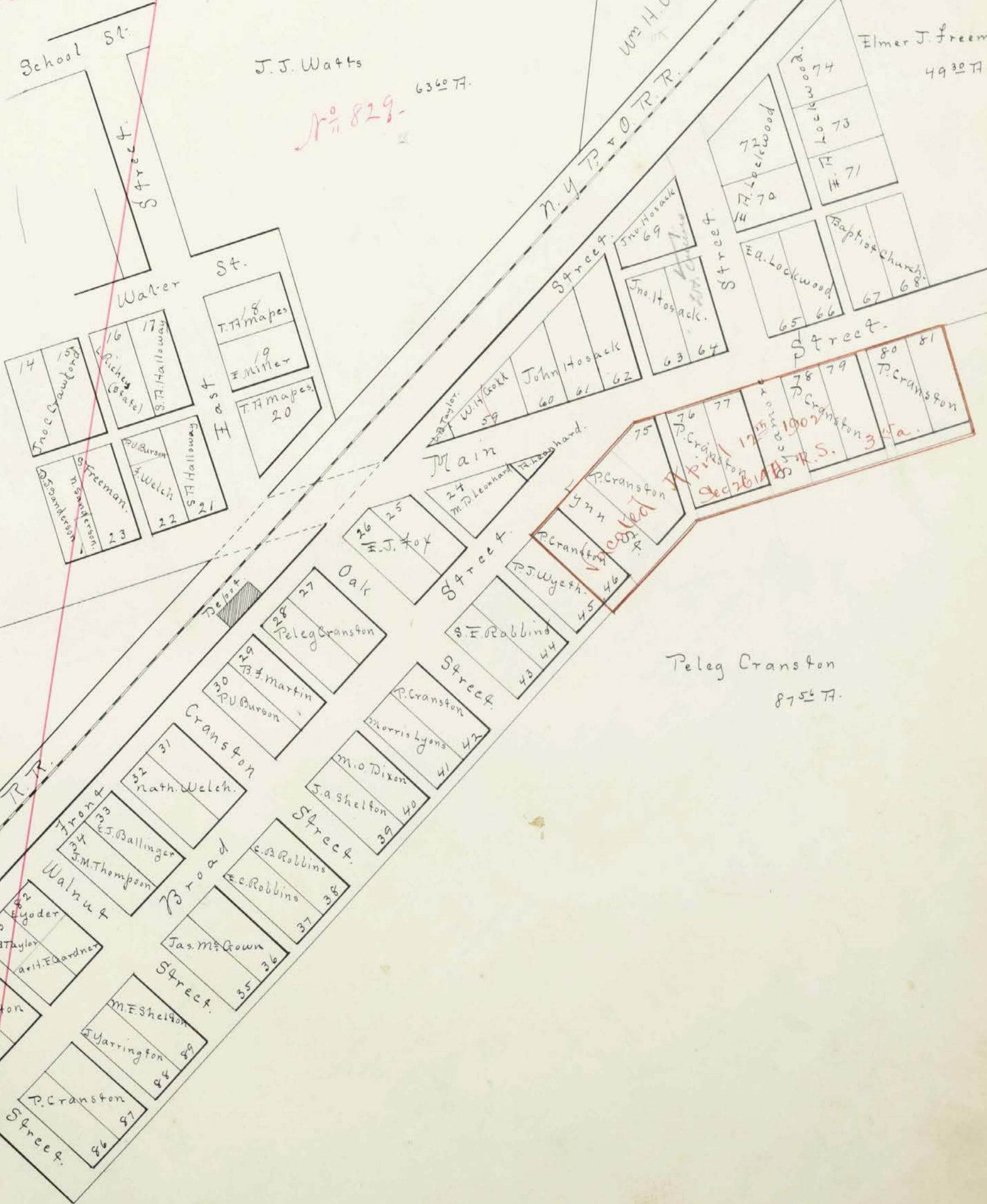
SCALE, 10 POLES TO AN INCH.

*N<sup>o</sup> 577 & 5641 &c -*

J.J. Watts  
*N<sup>o</sup> 829 -*  
6360 T.

Wm H. Willis  
FILE 8111

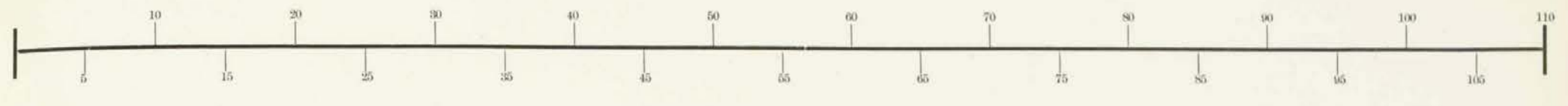
Elmer J. Freeman  
4930 T.



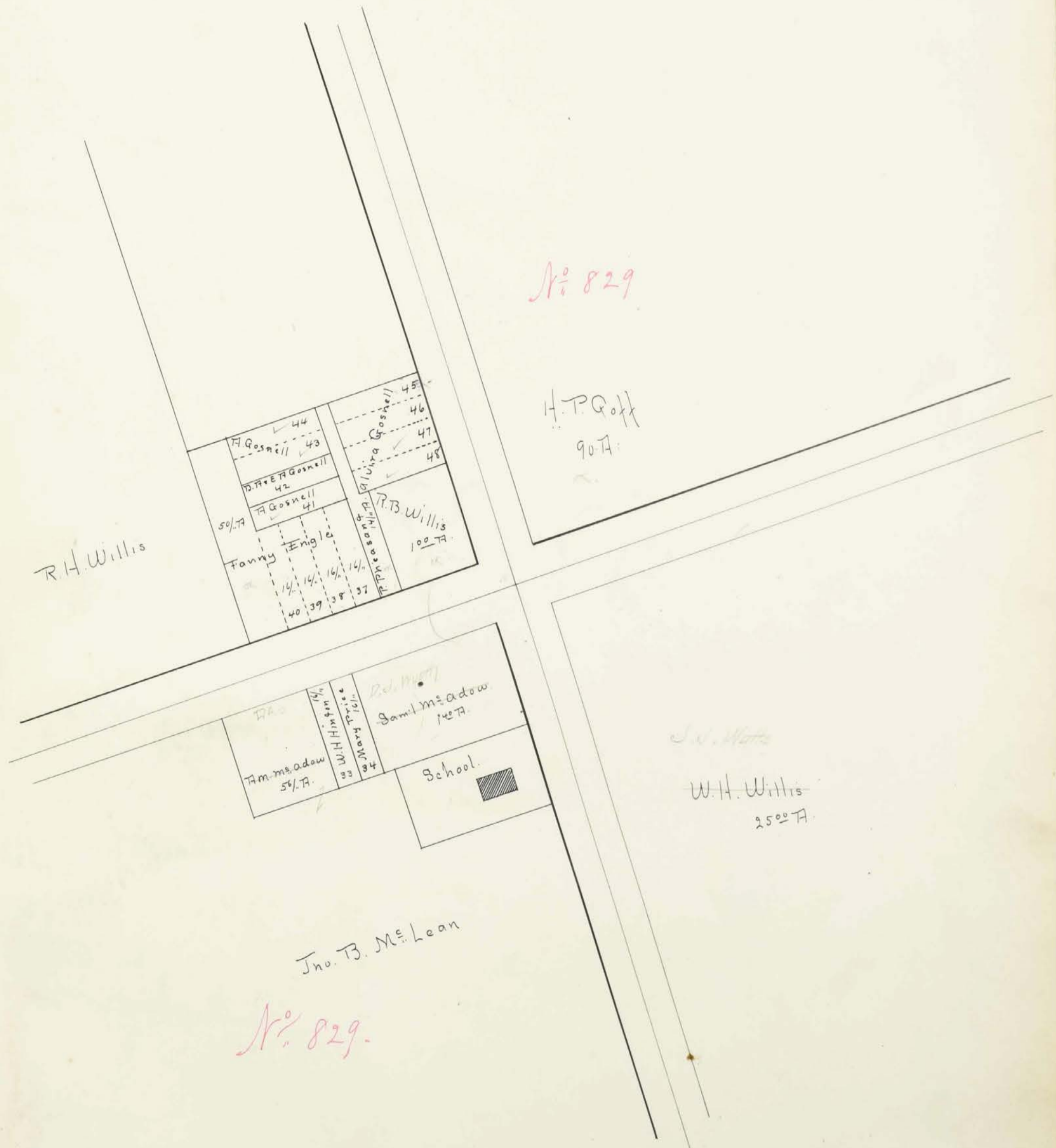




# Town of Union Center



SCALE, 10 POLES TO AN INCH.



In Whose Name Assessed.	No. of Entry.	Original Quantity.	Original Proprietor.	Unincorporated Towns.	Feet Front.	No. of Acres of Land Classified.			
						Arable and Plow Land.	Meadow and Pasture Land.	Uncultivated and Wood Land.	
								Acres.	H.
Amrine James	4405	1333 1/3	B. Kinnis			3			
Same	"	"	Do			35			12
Same	4264	"	J. Holmes			19			6
Amrine Willis	5386	990	R. Means			34	25		
Same	3691	1000	J. Trayer				75		
Armstrong Emily L.	5629+	1866 2/3	R. Means			21	62		
Armstrong John	5778 +	"	Do			32			9
Arnold G. W.	5629 +	"	Do			10			5
Same	829	1000	F. Bowyer.			36	75		
Applefellow Sarah E.	4632	530	J. Taylor Jr.			11			
Albaugh Jerome	5629+	1866 2/3	R. Means			1	75		
Anthony Lucia & Howard Shaw	4265	1333 1/3	J. Holmes			20		9	
Anderson Thomas W.	6156	250	F. Worthington			49	87		
Same	"	"	Do			61	40		
Same	"	"	Do			8			
Same	"	"	Do						36 33
Amrine Elizabeth	5507	390	B. Hill			15			
Brown Perry A.	5646	750	F. Worthington			16	43		
Barnett Samuel J.	4265	1333 1/3	J. Holmes			48			2
Same	5629+	1866 2/3	R. Means			41	50		20
Same	"	"	Do			79	50		25
Same	4405	1333 1/3	B. Kinnis			11	40		
Barnett Reuben	4265	"	J. Holmes			50			
Same	5629+	1866 2/3	R. Means			49	50		12
Same	"	"	Do			12	50		9
Same	4405	1333 1/3	B. Kinnis			6			16
Baldwin J. S. & C. H.	4265	"	J. Holmes			70			10
Same	"	"	Do			31		25	
Burson Martha	5778+	1828 1/2	R. Means			71	75		
Same	"	"	Do			40			10
Belleville Ira	4265	1333 1/3	J. Holmes			5			
Brown John L.	4264	"	Do			31	75		20
Brown W. W.	"	"	Do			6	25		
Beard Oliver & Lucinda	5778+	1828 1/2	R. Means				25		
Brokan Geo. B. (tax)	4265	1333 1/3	J. Holmes			12	5		15
Brown John L.	4264	"	Do			40	50		
Same	"	"	Do			41			
Same	"	"	Do			15			
Same	"	"	Do			14			
Same	"	"	Do			12	50		
Brown Perry A.	5646	750	F. Worthington			24	48		
Brown N. M.	"	"	Do			5	74		

1213 59 34 206 83

Whole No. of Acres.	Value per Acre excluding Buildings.	Total Value of Lands, excluding Buildings.	Value of all Buildings.			Total Value of Lands and Buildings.	Amount Added or Deducted by Co. Board of Equalization.	Total Value as Equalized by Co. Board.	Amount Added or Deducted by State Board of Equalization.	Total Value as Equalized by State Board.	Page.	REMARKS.
			Houses.	Mills.	Other Buildings.							
			Acres.	H.	Dolls.							
✓	3	17	51	100		151			150	4		
✓	50	17	850	150	100	1100			1050	17		
✓	25	17	425			425			480	✓		
✓	34	25	19			651			650	✓	Arable Smelter	
✓		75	19			14			10	5		
✓	21	62	17			350			350	6		
✓	40	17				680			670	9		
✓	10	17				255			260	✓		
✓	36	75	19		100	695			860	40		
✓	10	17				170	200		370	3		
✓	1	75	17			30	300		330	3		
✓	29	18				522			520	20		
✓	49	87	19			948			980	✓		
✓	61	80	19			1174			1170	✓		
✓	8	19				152			150	✓		
✓	36	33	19			690			690	✓		
✓	18	15			100	324			424	22		
✓	16	83	18			303			300	5		
✓	50	17				850			850	✓		
✓	61	50	17			1045			1050	✓		
✓	104	50	20			2090	500	200	2790	25		
✓	11	80	18			177			180	✓		
✓	50	20				1000	300	200	1500	20		
✓	61	50	17			1045			1020	21		
✓	21	50	15			322			320	4		
✓	22	17				374			370	✓		
✓	80	17				1360			1340	21		
✓	56	19				1064	300	300	1664	40		
✓	71	75	19			1363	200	100	1663	70	50	
✓	50	17				850			840	12		
✓	5	19				95	200	100	395	5		
✓	51	75	18			931			910	18		
✓	6	25	20			125	100		225	5		
✓		25	20			20			20	✓		
✓	140	20				2800	200	100	3100	25	A.H. Smith	
✓	40	50	16			644			630	16		
✓	41	19				779	200	200	1179	19		
✓	15	16				240			230	6		
✓	14	15				210			210	4		
✓	12	50	16			260			200	4		
✓	24	43	14			440			430	9		
✓	5	74	18			103	100		203	5		

1453 92 2615 2950 300 1410 30864



DESCRIPTION OF PROPERTY.					No. of Acres of Land Classified.			Whole No. of Acres.	Value per Acre excluding Buildings.		Value of all Buildings.			Total Value of Lands and Buildings.	Amount Added or Deducted by Co. Board of Equalization.		Total Value as Equalized by Co. Board.	Amount Added or Deducted by State Board of Equalization.		Total Value as Equalized by State Board.	Page.	REMARKS.			
					Arable and Plow Land.	Meadow and Pasture Land.	Uncultivat'd and Wood Land.		Dolls.	Cts.	Houses.	Mills.	Other Buildings.		Added Dollars.	Deducted Dollars.		Added Dollars.	Deducted Dollars.						
In Whose Name Assessed.	No. of Entry.	Original Quantity.	Original Proprietor.	Unincorporated Towns.	Feet Front.	Acres.	H.	Acres.	H.	Acres.	H.	Acres.	H.	Dolls.	Dolls.	Dollars.	Dollars.	Dollars.	Dollars.	Dollars.	Dollars.	Dollars.	Dollars.		
Easterday Nancy A.	5646	750	T. Worthington			20		9	25					29 25	18	527			327			520	5		
Easterday Wm M.	"	"	Do			20	88			5				25 88	18	465	100	100	665			660	6		
Ellenwood Julia	3690	1000	F. Frazer			51	85							51 85	18	933	150	100	1103			1110	27		
Engle Fannie J.	829	"	T. Bowyer	Uninc. Ctr.	66	50								50		20			20			20	1		
Same	"	"	Do	Do	44 1/2	16								16		10			10			10	1		
Same	"	"	Do	" #37		16								16		10			10			10	1		
Same	"	"	Do	" #38		16								16		10			10			10	1		
Same	"	"	Do	" #39		16								16	100	11			110			110	1		
Ford Sylvester	829	1000	E. Bowyer			7	13							7 13	19	135			135			130	10		
Same	13593	100	E. Wallace			95	50			10				95 50	19	1414	200	100	2114			2110	10		
Ford Emily	3690	1000	F. Frazer			102	50			10				102 50	19	2137	200		2337			2300	40		
Fox Chas W.	5635	1200	J. Holman			28	80							28 80	16	461			461			430	32		
Fox E. J.	829	1000	T. Bowyer			16		15						31	19	589	150	150	889			870	15	See p. 22	
Same	3690-1	2000	F. Frazer			65	60							65 60	20	1312			1312			1290	20	E. J. Freeman	
Ford W. S.	3690	1000	Do			15	40							15 40	14	246	100		346			380	5		
Ford Harry C.	"	"	Do			10								10	17	170			170			150	16		
Same	"	"	Do			15	75							15 75	17	264			264			250	16		
Fox Elizabeth et al.	5635	1200	J. Holman			22								22	16	352	200		552			550	10	J. M. Fox	
Fox Ida L.	829	1000	T. Bowyer			27		20						27	19	493	200		1093			1080	10		
Same	"	"	Do			33								33	19	627			627			600	25		
Foreman Luella C.	"	"	Do			22			45					22	19	1273			1273			1260	10		
Foreman Elmer J.	"	"	Do			29	30	20						29 30	19	937	200	100	1237			1230	10	W. H. Willis	
Foreman Susan	3690	"	F. Frazer			37	75			9				37 75	18	841			841			830	12	E. J. Freeman	
Foreman B. W.	3691	"	Do			31	85							31 85	18	573			573			560	9		
Foreman G. W.	"	"	Do			30	20			4				30 20	17	581			581			560	22		
Foreman John H.	"	"	Do			30	70							30 70	18	553			553			550	10	See p. 22, No. 2, Potts	
Foreman Amos H.	"	"	Do			30	40			10				30 40	17	1035			1035			1030	8		
Same	5646	750	T. Worthington			1	86							1 86	17	32			32			30	1		
Fox Chas W.	5635	1200	J. Holman			28								28	16	448			448			440	12		
Griffin Saml R.	4264	1333 1/3	J. Holmes			11	24			3				11 24	14	146			146			180	5		
Same	4405	"	B. Kinzie			40				10				50	19	950	100	100	1150			1120	35		
Griffin Frank L.	4264	"	J. Holmes			15	50			10				25 50	14	357			357			350	6		
Gibson Wm	4405	"	B. Kinzie			28				5				30	17	510			510			510	4		
Ginn W. J.	"	"	Do			20				15				35	15	525			525			530	1		
Same	"	"	Do			15				15				30	19	570	200		770			770	5		
Goff H. P.	829	1000	E. Bowyer	Comm. Ctr.		90								90	19	1710	300	200	2210			2170	40		
Same	13593	100	E. Wallace			1	13							13	19	21	100	1000	100	1221			1220	1	

1000 50 64 25 151      1219 77      27131 7750 1000 950 26331

In Whose Name Assessed.	No. of Entry.	Original Quantity.	Original Proprietor.	Unincorporated Towns.	Feet Front.	No. of Acres of Land Classified.						Whole No. of Acres.	Value per Acre excluding Buildings.	Total Value of Lands, excluding Buildings.	Value of all Buildings.			Total Value of Lands and Buildings.	Amount Added or Deducted by Co. Board of Equalization.	Total Value as Equalized by Co. Board.	Amount Added or Deducted by State Board of Equalization.	Total Value as Equalized by State Board.	Page.	REMARKS.			
						Arable and Plow Land.	Meadow and Pasture Land.	Uncultivat'd and Wood Land.	Acres.	H.	Acres.				H.	Acres.	H.								Houses.	Mills.	Other Buildings.
Goff W. H.	5635	1200	J. Gilmore			90						10	17	1700	200	200	1900	1860			40						
Same	5778	1828 2/3	R. Means			121						15	17	2312	200	200	2712	2650			30						
Gosnell John A.	14632	530	J. Taylor Jr.			15	20	10					17	428	100		528	510			22	Jasper N. Brown					
Grammatt Wm	4405	1333 1/3	B. Kinnis			40						14	19	1026			1026	1020			6	L. M. Wolford					
Same	"	"	Do			5							19	95		95	90				10	E. W. R. Bonds					
Same	5629	866 2/3	R. Means			35	25						19	726	200	200	1126	1120			10	"					
Green Lewis W.	5635	1200	J. Gilmore			18	50						17	314			314	290			25						
Gosnell Alvina	829	1000	F. Boyer	Uninc. #41	41 1/4									10			10	10									
Same	"	"	Do	"	43	41 1/4								10			10	10									
Same	"	"	Do	"	44	41 1/4								10			10	10									
Same	"	"	Do	"	45	41 1/4								10	100		110	110									
Same	"	"	Do	"	46	41 1/4								10			10	10									
Same	"	"	Do	"	47	41 1/4								10			10	10									
Same	"	"	Do	"	48	41 1/4								10			10	10									
Same	"	"	Do	"	42	41 1/4								10			10	10									
Kornel E. A. + D. T.	"	"	Do	"	42	41 1/4								10			10	10									
Ginn Rosa	4405	1333 1/3	B. Kinnis			42	78					28	14	948	100		1048	1050									
Gardner Albert	5386	990	R. Means			17	90						18	322			322	320			5						
Spatt Frank L.	14632	530	J. Taylor Jr.			50							17	458	100		450	940			8	Building					
Garton J. C.	"	"	Do			15	87						17	270			270	270									
Garver S. J.	5646	750	F. Worthington			6							18	108	200		308	300			9						
Gray Della	3690	1000	F. Frazer			39	58						18	694			694	680			15						
Hamilton James	5249	400	N. Reid			41	80						17	1646	100	100	1846	1810			34						
Hamilton Mamie C.	4264	1333 1/3	J. Holmes			15							14	420			420	400			18						
Hull Joseph C.	3690	1000	F. Frazer			95	20	49					19	3116			3116	3050			65						
Hull W. T. F.	"	"	Do			17		8					18	450			450	450			5						
Hartshorn Geo. P.	829	"	F. Boyer			46	27	10	10				19	1257	200	200	1657	1640			18						
Hinton Mary M.	"	"	Do			15							17	255			255	260									
Hinton Wm H.	"	"	Do			3	50						16	86		154	210	210									
Same	"	"	Do			16								10			10	10									
Holt Levi H.	5646	750	F. Worthington			16							16	256			256	260									
Holt Daniel E.	"	"	Do			16							16	256			256	260									
Holt Geo. H.	"	"	Do			15	65						16	250			250	250									
Holt Allie M.	"	"	Do			15	65						16	250			250	250									
Holt Elizabeth	"	"	Do			15	25						16	244			244	240									
Holt Geo. W.	"	"	Do			59							18	1062	100		1162	1130			36						
Hamilton A. L. & A. M. Bellville	4265	1333 1/3	J. Holmes			47	33						20	946			946	940			10	a. m. Bellville					
Hamilton J. W. & Clara A.	5249	400	N. Reid			26							16	320	150		470	450			18						
Hisey W. P.	3691	1000	F. Frazer			2							18	36			36	30			4						
Same	5646	750	F. Worthington			6							18	108			108	90			14						
Hisey Irene	5778	1828 2/3	R. Means			7	80						19	144	300	100	544	540			3						
Hartshorn F. B.	829	1000	F. Boyer			3							19	57	200		257	260									
						996	10	30	161							1197	10	21012	2050	1756	24216						

In Whose Name Assessed.	No. of Entry.	Original Quantity.	Original Proprietor.	Unincorporated Towns.	Feet Front.	No. of Acres of Land Classified.												
						Arable and Plow Land.		Meadow and Pasture Land.		Uncultivat'd and Wood Land.								
						Acres.	H.	Acres.	H.	Acres.	H.							
Hildreth S. W.	5635	1200	J. Gilmore			24												
Hill Peter S.	3690	1000	F. Frazer			21												
Jackson Henry F.	4265	1333 1/3	J. Holmes			35												
Same	"	"	Do			31												
Johnson F. O.	5646	750	F. Worthington			807												
Jolliff William	"	"	Do			48			9									
Same	3691	1000	F. Frazer			21966			9									
Same	5646	750	F. Worthington			4250												
Jolliff Andrew	3691	1000	F. Frazer			350												
Same	5646	750	F. Worthington			5550			6									
Jolliff Peter	3691	1000	F. Frazer			9625												
Johnson Alexander	4264	1333 1/3	J. Holmes			1530			12									
Johnson Alfred	5646	750	F. Worthington			11												
Johnson Eliza A.	829	1000	F. Boyer			47	20											
Kezartee T. W.	4264	1333 1/3	J. Holmes			100	43	50										
Kezartee Clay	"	"	Do			54												
Same	4405	"	B. Brinnis			40	6	60										
Knotts John W.	5507	390	B. Hill			40		11										
Same	"	"	Do			75												
Kearns Mary	829	1000	F. Boyer			4550		5										
Kirk Williams	5629	866 2/3	R. Means			100	20	10										
Kearns John W.	829	1000	F. Boyer			34		2										
Laughrey Sylvester & Jane	4405	1333 1/3	B. Brinnis			10		20										
Same	"	"	Do			5750		10										
Laughrey Edwin	5507	390	B. Hill			540												
Laughrey Melissa C.	"	"	Do			1790												
Laughrey Jesse	5629	1866 2/3	R. Means			4375												
Same	5386	990	Do			3832												
Laughrey S. L.	4405	1333 1/3	B. Brinnis			8313		12										
Laughrey John	14632	530	J. Taylor Jr.			813												
Lyons Morris	829	1000	F. Boyer			4350		15										
Same	"	"	Do			358												
Laird James M.	5635	1200	J. Gilmore			2775												
Leiper John	5386	990	R. Means			20												

1594 46 99 230

Whole No. of Acres.	Value per Acre excluding Buildings.	Total Value of Lands, excluding Buildings.	Value of all Buildings.			Total Value of Lands and Buildings.	Amount Added or Deducted by Co. Board of Equalization.	Total Value as Equalized by Co. Board.	Amount Added or Deducted by State Board of Equalization.	Total Value as Equalized by State Board.	Page.	REMARKS.
			Houses.	Mills.	Other Buildings.							
28	16	448				448		430			20	
21	16	376				376		370			9	J. Gilmore
35	19	665	300			965		950			12	
31	19	599				599		580			10	
317	16	55				55		50			8	
57	16	1026				1026		1030			✓	
228	20	4578	200		200	4978		4920			55	
42	19	765	765			765		740			23	Mr. Edna Smith
3	16	63				63		50			16	
61	16	1107	100			1207		1210			✓	
96	16	1732	100			1832		1770			60	44 <sup>th</sup> St. Mr. S. K. ...
27	14	378				378		370			7	
10	16	160				160		160			✓	
67	19	1273	200		100	1573		1570			✓	
193	19	3667	200		200	4067		4060			9	
54	17	918				918		920			✓	
146	17	2492	100		100	2692		2640			42	
50	16	900	+		+	1100		8900			✓	See page on this...
75	20	15				15		20			✓	
50	19	960	100		100	1160		1150			6	
130	19	2470	300		200	2970	100	2810			60	
36	17	612				612		600			8	
80	16	1280				1280		1280			4	
67	19	1215				1215		1200			20	
5	17	99	100			199		200			3	
17	17	304				304		300			6	M. Carpenter
83	17	1424	400			1824		1780			46	
38	17	653				653		650			8	
100	13	1902	200			2102		2090			15	
8	17	138				138		130			5	
58	19	1111	100		100	1311		1300			15	
3	19	68				68		70			✓	
27	17	472				472		450			25	
20	18	360				360		360			5	

1913 46 34962 2500 1100 37562



In Whose Name Assessed.	No. of Entry.	Original Quantity.	Original Proprietor.	Unincorporated Towns.	Feet Front.	No. of Acres of Land Classified.					
						Arable and Plow Land.		Meadow and Pasture Land.		Uncultivated and Wood Land.	
						Acres.	H.	Acres.	H.	Acres.	H.
Warron C.S.	829	1000	T. Bowyer			13	50				
Milkins Mary B.			Do			87					
Same	<del>5635</del>	990	R Means			24	40			10	
Mills James	5629+	1866 2/3	Do			81				10	
Middletown James	5635	1200	J. Holmes			89	90			10	
Middletown D.W.			Do			31	50			4	
Martin Albert G.	5386	990	R Means			25					
Mills Lewis	4405	1333 1/3	B. Brown			19				48	
Mitchell W.B.	5635	1200	J. Holmes			25					
Worford Susan M.	4265	1333 1/3	J. Holmes			27	50				
Same			Do			10		9	50		
Martin Albert G.	5386	990	R Means			45					
Norris Jacob P.	3690	1000	F. Frazer			70	50			5	
Newlove Josephine L.	3691	"	Do			9	10				
New Joseph	4264	1333 1/3	J. Holmes			51	50			10	
Perry Albert T.	3691	1000	F. Frazer			120	50			8	
Pooler Lawrence G.	829	"	T. Bowyer			17					
Price John C.	5629	1866 2/3	R Means			20					
Price John	"	"	Do			1	75			100	
Price Daniel H.	4264	1333 1/3	J. Holmes			39	50			10	
Phelps C.A.	5635	1200	J. Holmes			35					
Patrick Geo. W.	"	"	Do			33	33				
Pierce Wm. W.	3691	1000	F. Frazer			2					
Predmore John	829	"	T. Bowyer			42				8	
Predmore Marion A.	"	"	Do			18	60			7	
Pheasant Peter	"	"	Do			14					
Porter C.D. (Guardian)	4264	1333 1/3	J. Holmes			31	40			9	
Phelps Mary C.	5646	750	G. Worthington			10	48			6	
Phippes Wm. L.	3690	1000	F. Frazer			9	10				
						990	85	15	80	135	

Whole No. of Acres.	Value per Acre excluding Buildings.	Total Value of Lands, excluding Buildings.	Value of all Buildings.			Total Value of Lands and Buildings.	Amount Added or Deducted by Co. Board of Equalization.	Total Value as Equalized by Co. Board.	Amount Added or Deducted by State Board of Equalization.	Total Value as Equalized by State Board.	Page.	REMARKS.
			Houses.	Mills.	Other Buildings.							
Acres.	H.	Dolls.	Cts.	Dollars.	Dollars.	Dollars.	Dollars.	Added Dollars.	Deducted Dollars.	Dollars.		
V	13	50	15	202	100	302	300			300		5
V	50		14	450	200	1250	1240			1240		15
V	37	80	19	661		661	650			650		10
V	27		19	1729	300	2329	2310			2310		15
V	98	90	17	1651	100	1751	1740			1740		40
V	37	50	17	587	100	687	680			680		12 M. Middletown
V	25		18	450		550	540			540		6
V	14		17	1936	200	2236	2170			2170		68
V	25		17	425	100	525	520			520		8
V	27	50	20	550	100	650	650			650		5
V	19	80	18	356		356	350			350		9
V	45		19	855		855	860			860		V
V	75	50	19	1434	200	1734	1710			1710		20
V	8	10	19	154	200	354	340	100		240		15
V	61	50	19	1165	100	1265	1250			1250		15
V	128	50	19	2441	200	2641	2620	125		2620		95
V	17		17	289		289	280			280		6
V	20		17	340		340	340			340		4
V	1	75	17	30	100	130	130			130		3 F.C. Brown
V	49	50	15	743		743	740			740		V
V	35		17	595		595	580			580		15
V	33	33	17	566		566	550			550		17
V	2		18	36		36	40			40		V
V	50		17	550		550	820			820		30
V	25	60	17	435		435	480	50		480		6
V	14			20		20	20			20		V
V	38	80	16	621		621	610			610		10
V	16	83	19	303		303	300			300		5 P.A. Brown
V	8	10	17	138		138	130			130		6 P.L. Hill
	1150	65		20547	1900	900	23347					



DESCRIPTION OF PROPERTY.					No. of Acres of Land Classified.						Total Value of Lands, excluding Buildings.	Value of all Buildings.			Total Value of Lands and Buildings.	Amount Added or Deducted by Co. Board of Equalization.		Total Value as Equalized by Co. Board.	Amount Added or Deducted by State Board of Equalization.		Total Value as Equalized by State Board.	Page.	REMARKS.	
					Arable and Plow Land.	Meadow and Pasture Land.	Uncult'vat'd and Wood Land.	Houses.	Mills.	Other Buildings.		Added Dollars.	Deducted Dollars.	Added Dollars.		Deducted Dollars.								
In Whose Name Assessed.	No. of Entry.	Original Quantity.	Original Proprietor.	Unincorporated Towns.	Feet Front.	Acres.	H.	Acres.	H.	Acres.	H.	Acres.	H.	Dollars.	Dollars.	Dollars.	Dollars.	Dollars.	Dollars.	Dollars.	Dollars.	Dollars.		
Price Mary	829	1000	J. Bouyer					16						20			20			20		12	J. B. M. Lane	
Patach David C.	5635	1200	J. Bouyer			20								340			340			340				
Robinson James W.	5386	990	R. Means			311				41	40			6424	200	200	7224			7190			40	Halle Johnson
Same	829	1000	J. Bouyer			144	50							2546	200	100	3190	100		3050			45	J. B. M. Lane
Same	3691	"	F. Trazer			5								95			95			100			40	J. M. H. Allen
Same	5386	990	R. Means			32	75			11				412			412			770			40	" "
Ritchie Jerome	"	"	Do			38	66							698			698			690			9	J. M. Ritchie
Reed Flora	4405	133 2/3	B. Ginnies			7	75							104			104			100			7	
Rogers W. Scott	5629+	1866 2/3	R. Means			122		100		20				242	16		2872	300		4170				
Rogers Mary L.	"	"	Do			100								190			1900			1870			30	
Rogers Henry W.	5646	150	T. Worthington			67	49			8				76	85	14	1393	100		1440			45	
Reed Frank & W. L.	5778	1828 2/3	R. Means			75		40		12				127	19	200	2413	200	150	2763			60	
Reed John	"	"	Do			9								9			162			160				
Reed John & Ernest	4265	133 2/3	J. Holmes			29								29			590			580			5	
Rhinshart Lawrence C.	14632	550	J. Taylor Jr.			14	30			14				58	50	17	974	150	150	1294			8	
Rhinshart E. J. & A. D.	5386	990	R. Means			45	45			10				55	75	18	495		100	1095			9	
Rhinshart Wesley	"	"	Do			20								20		14	360			360			5	
Sequer E. M.	5629+	1866 2/3	R. Means			24								24	19	100	456	100		556			15	
Simpson Joseph	5507	390	B. Hill			100				20				120		14	2160			2090			70	
Silverson David	"	"	Do			24	30			6				30	30	17	515	200		715			21	
Shirk Aaron	5249	400	W. Reid			109		60		40				200	19	200	3800	200	100	4100			55	
Shaw Emma	"	"	Do							12				12		16	192			192				
Shirk John	"	"	Do			58	75							58	75	19	7116			1116			34	
Same	4265	133 2/3	J. Holmes			57	12			12				63	12	19	1199	100		1299			34	
Shirk Henry	"	"	Do			48	25			15				63	25	19	1202	200	100	1502			10	
Same	4264	"	Do			5								5		15	75			75				
Same	4405	"	B. Ginnies			10				10				20		15	300			300				
Same	4265	"	J. Holmes			9	15			3				12	15	19	231			231			12	
Southard John D.	"	"	Do			100	63	25		20				148	63	19	2824	200	100	3124			45	
Spicer William	3691	1000	F. Trazer			102	50			12				114	50	17	1946	100	100	2146			35	
Sanderson Nancy J.	3690	"	Do			20				1				21		18	378			378			9	
Snyder Martin	3646	750	T. Worthington			10								10	18	18	180			180			5	
Snyder Geo. W.	"	"	Do			6		8						16		14	284			284			20	
											2306 75			41315 1950		1100		44365						



In Whose Name Assessed.	No. of Entry.	Original Quantity.	Original Proprietor.	Unincorporated Towns.	Feet Front.	No. of Acres of Land Classified.			Whole No. of Acres.	Value per Acre excluding Buildings.		Total Value of Lands, excluding Buildings.	Value of all Buildings.			Total Value of Lands and Buildings.	Amount Added or Deducted by Co. Board of Equalization.		Total Value as Equalized by Co. Board.	Amount Added or Deducted by State Board of Equalization.		Total Value as Equalized by State Board.	Page.	REMARKS.	
						Arable and Plow Land.	Meadow and Pasture Land.	Uncult'vat'd and Wood Land.		Acres.	H.		Acres.	H.	Acres.		H.	Dollars.		Cts.	Dollars.				Dollars.
Taylor John J. Same	5635	1200	J. Kilmore			50						9			9			10						✓	
Taylor John & Wm	4405	1333 1/3	B. Krnis			16	75					400			400			390						8	
Taylor Joel B. Same	829	1000	F. Bowyer			16	50					313			313			280						12	R.N. Wheeler
Taylor J. B. Same	5635	1200	J. Kilmore			20						199			199			200						30	R.N. Hillis
Turney Hoses B. Same	3691	1000	J. Frazier			1						19			19			10						10	
Thomas Catharine	5386	990	A. Means			49	30					456	100		1096			1090						✓	
Thompson Abigail Same	4264	1333 1/3	J. Holmes			50					9	50			1130	100		1230						12	
Thompson Abigail Same	5646	750	T. Worthington			35						22			720			700						16	
Thackeray James H. Same	5778+	1828 1/3	A. Means			20						225			225			220						10	
Turner Rosa B. Same	5629+	1866 2/3	Do			36	86				10	797			797			790						6	
Thompson Edw. & Mary J.	5646	750	T. Worthington			22	85					411			411			410						5	
Vanatta Jesse	5629+	1866 2/3	A. Means			90	10	20				1570	200	100	2170			2150						25	
Vermillion Daisy C.	5507	390	B. Hill			24	10					410			410			400						6	
Wyggle Sarah	4264	1333 1/3	J. Holmes			47	50	30				1095			1095			1070						10	M. Estlow
Welch John A.	4265	"	Do			49	50					1681	200	100	1981			1970						✓	
Welch Sarah A.	5778+	1828 1/3	A. Means	Broadway		3	25					62		100	162			160						✓	S. Lockwood
Willis Wm H. Same	829	1000	F. Bowyer			9	63					183			183			180						✓	
Same	"	"	Do			4	40					91			91			90						✓	
Same	"	"	Do			2	50					47	100	100	247			250						✓	
Same	"	"	Do			37						703			703			700						✓	
Willis R. H.	"	"	Do			47						493	100		993	993		971						10	
Wyzeth P. J.	5635	1200	J. Kilmore			95	75	50				2769	200	100	3069	3069		3060						5	
Wyzeth Henry S. & Mrs L. Same	15015	50	J. Galloway			2	25					48			48			40						5	
Wyzeth G. J. Same	5635	1200	J. Kilmore			30	50	4				655	150	100	905			880						30	
Wyzeth David V. Same	"	"	Do			9	40	2-1				559	150	150	859			850						12	
Wanner John B. Same	"	"	Do			50						850	100		950			940						17	
Webb Sarah L. Same	5646	750	T. Worthington			15						255			255			240						✓	
White James W.	5386	990	A. Means			40		10				550	100	100	1050			1040						12	
Wolford Elizabeth	5629+	1866 2/3	Do			12						204			204			200						3	
Wolford Henry	4405	1333 1/3	B. Krnis			50						950	100	100	1150			1140						6	
						993	44	31	136	50		1159	94		2082	5	1900	400	950	240	95				

In Whose Name Assessed.	No. of Entry.	Original Quantity.	Original Proprietor.	Unincorporated Towns.	Feet Front.	No. of Acres of Land Classified.						Whole No. of Acres.	Value per Acre excluding Buildings.				Total Value of Lands, excluding Buildings.			Value of all Buildings.			Total Value of Lands and Buildings.	Amount Added or Deducted by Co. Board of Equalization.		Total Value as Equalized by Co. Board.	Amount Added or Deducted by State Board of Equalization.		Total Value as Equalized by State Board.	Page.	REMARKS.	
						Arable and Plow Land.		Meadow and Pasture Land.		Uncult'vat'd and Wood Land.			Acres.	H.	Dolls.	Cts.	Dollars.	Dollars.	Dollars.	Dollars.	Dollars.	Added Dollars.		Deducted Dollars.	Dollars.		Added Dollars.	Deducted Dollars.				Dollars.
						Acres.	H.	Acres.	H.	Acres.	H.																					
Wheeler Abbie N.	4264.	1333 1/3	J. Holmes			30	50					70	✓	40	50	19	769	100		100	969		100	1070	✓		✓	J. M. Nees				
Same	"	"	Do			40							✓	40		20	400				400			790	✓		10	Same				
Same	4405	"	B. Kermis			25	95						✓	25	95	20	519				519			510	✓		5					
Same	"	"	Do			30						15	✓	52		17	816	100		100	1016			980	✓		38					
Willis Nancy J. & R. B.	3690	1550	F. Frazer			72						25	✓	100		17	1700				1700			1680	✓		22					
Watts J. J.	5778+	1828 2/3	R. Means			123						4	✓	127		19	2413	300		200	2913	425		3270	✓		55	300 on ledge.				
Same	829	1000	T. Bowyer			90						4	✓	94		15	1672				1672			1680	✓		15					
Same	"	"	Do			63	60						✓	63	60	19	1204				1204			1210	✓		✓					
Webb Mary	5646	750	T. Worthington			24	50					5	✓	29	50	18	531				531	531			520	✓		9				
Wood Theodore J.	4405	1333 1/3	B. Kermis			97						8	✓	105		16	1680	200		100	1980	1180			1970	✓		12				
Holford Sarah J.	5629+	1866 2/3	R. Means			10							✓	10		19	190				100	290			290	✓		5				
Witch Mary	5778	1828 2/3	Do			11	50						✓	11	50		30	180				180			180	✓		✓				
Wiley Emily J.	4264	1383 1/3	J. Holmes			47						30	✓	77		20	1540	100			1640			1610	✓		30					
Willis W. B.	829	1000	T. Bowyer			25						5	✓	25		19	475				475	75			480	✓		25	splitter land			
Hall Frank L. & Almira	5629+	1866 2/3	R. Means			200	125					57	✓	380		19	7258	400		300	7958			7930	✓		30					
Woodburn R. L.	"	"	Do			100	90					20	✓	100		19	3990	200		200	4390		110	4270	✓		15					
Same	6493-5629+	"	Do			40						10	✓	150		19	450	100			1050		150	840	✓		60					
Wanner Henry M.	3690	1000	F. Frazer			40							✓	40		19	720				720			710	✓		12					
Same	3690	"	Do			33							✓	33		19	627	200		100	927			920	✓		12					
Wanner Orville J.	"	"	Do			37						4	✓	41		18	736	100			836			800	✓		35					
Willis R. B.	829	1000	T. Bowyer			1							✓	1		19	19	100				119			120	✓		✓				
Young Martha E.	5629+	1866 2/3	R. Means			29	75					10	✓	39	75	17	676	100			776			770	✓		5					
Young John N.	"	"	Do			5						5	✓	10		17	170				170			170	✓		4					
Yearely Thomas	5778	1828 2/3	Do			120		6					✓	126		17	2140	200		100	2440			2400	✓		45					
The Nypans R. R. Co.																																





IN WHOSE NAME ASSESSED.	No. of In-Lot.		No. of Out-Lot.	DESCRIPTION OF PROPERTY.				Value of Lots. Dollars.	
	No. of In-Lot.	No. of Out-Lot.		What Part.	Street.	Feet.	Street.		Feet.
Logie Co. & Alice M.	✓	47		all	Main	66	alley	165	30
For Co. M.	✓	50		"	Main	66	"	165	25
For Nancy J.	✓	8		"	Main	66	"	165	30
Logie & Dunsin				Under store on RR grounds					
Boff Co. & J.	✓	58		all	Main	117		10	20
Same.	✓	59		"	Main	129		50	20
Gardner Albert & Lattie E.	✓	82		Jr	Broad	66	Walnut	82 50	15
Same.	✓	83		"	Do	66	alley	82 50	15
Halloway J. T.	✓	17		all	Main	66	East	165	25
Same.	✓	21		"	Main	66	Do	165	30
Hamilton Alice H.	✓	6		n.	Do	82	Collage	66	15
Korack John	✓	60		all	Broad	66		126 50	20
Same	✓	61		"	Do	66		165	15
Same	✓	62		"	Do	66	alley	221 40	30
Same	✓	63		"	Do	66	Do	165	15
Same	✓	64		"	Do	66	Sycamore	165	15
Same	✓	69		"	Sycamore	125 40	Front	153 40	20
2067.				Second story of house.					
Johnson Edu. A. (Edward)	✓	2		E.	Main	28	Center	165	15
Leonhard Matilda D.	✓	24		all	Main	132	Sym		30
Leonhard Alexander	✓			less Main + Broad E of lot # 24					20
Lynn Morns	✓	41		all	Broad	66	alley		30
Parkwood K.A.	✓	65		"	Do	66	Sycamore		30
Same	✓	66		"	Main	66	alley		15
Same	✓	70		"	Sycamore	82 50	Do		15
Same	✓	71		"	Church.	82 50	Do		15
Same	✓	72		"	Sycamore	82 50	Front		15
Same	✓	73		"	Church	82 50			15
Same.	✓	74		"	Do	158 70	Front		15

855

VALUE OF ALL BUILDINGS.			Total Value of Lots and Buildings.	Amount Added or Deducted by Co. Board of Equalization.		Total Value as Equalized by Co. Board.	Amount Added or Deducted by State Board of Equalization.		Total Value as Equalized by State Board.	REMARKS.
Houses.	Mills.	Other Buildings.		Added Dollars.	Deducted Dollars.		Added Dollars.	Deducted Dollars.		
150			130			180				
100			125			130				A J Keller
100			130			130				A J + Marie Engle
100			100			100				
			20			20				
			20			20				
200			215			220				
			15			20				
			25			30				
			30			30				L. F. Lary
100			115			120				
			20			20				
200			230			230				
			15			20				
			15			20				
			20			20				
600			600			600				
100			115			120				
200			230			230				
			20			20				
			30			30				
100			130			130				
			15			20				
			15			20				
			15			20				
			15			20				
			15			20				
			15			20				
			15			20				
1950			2503							

IN WHOSE NAME ASSESSED.	DESCRIPTION OF PROPERTY.				Value of Lots. Dollars.			
	No. of In-Lot.	No. of Out-Lot.	What Part.	Street.				
M <sup>r</sup> Koon James	1	35	all	Broad	56	Walnut	165	30
Same	1	36	"	Do	60	alley	165	30
Miller Emma	1	19	all	East	82 50	alley	132	25
Mayer Thomas A.	1	18	"	Do	82 50	Do	132	25
Same	1	20	"	R.R.	148 82	East	132	25
Morris B. F.	1	Lease from Noyan R.R. Co.				25		
Martin B. H.	1	29	all		66	alley	165	30
Magoon Nancy	1	7	"	Main	66	"	60	30
Mellichamp B. F.	1	6	pt	Do	40	Cottage	84	20
Miller Susan J.	1	57	all	West	156 75			20
Morse E. J.	1	11	"	Walnut	66	alley	165	25
Noyan R.R. Co.	1	90	all					
Piper Loudas	1	2	pt	Main	38		165	15
Robbie Ernest C.	1	37	all	Broad	66	alley	165	30
Robbie Catharine B.	1	38	"	Do	46	Crawford	165	30
Rosell May J.	1	3	Dr.	Main	27	alley	165	15
Robbie S. E.	1	43	all	Broad	66	Oak	165	30
Same	1	44	"	Do	66	alley	165	30
Redding Thomas & Alice	1	56	N.	West	14 50		132	15
Stine & Son	1	10			60		165	25
Shelton Estella	1	10	all	Main	66	Cottage	165	30
Shelton Jane T.	1	39	"	Broad	66	Crawford	165	30
Sanderson Daniel J.	1	1	Bl.	Main	41	Beuler	165	30
Sanderson Mervin	1	51	W.	Do	6.			15
Same	1	52	E.	Do	13.			15
Same	1	52	"	Do	21.			15
Sanderson & Fogle	1	Warehouse on R.R. Lands.						150
Sanderson Charles W.	1	51	W.		24.			15
Sanderson Nora	1	1	N.E.	Main	25	Centre	65	30
Shelton Martha E.	1	89	all	Broad	66	alley	82 50	20

VALUE OF ALL BUILDINGS.			Total Value of Lots and Buildings.	Amount Added or Deducted by Co. Board of Equalization.		Total Value as Equalized by Co. Board.	Amount Added or Deducted by State Board of Equalization.		Total Value as Equalized by State Board.	REMARKS.
Houses.	Mills.	Other Buildings.		Added Dollars.	Deducted Dollars.		Added Dollars.	Deducted Dollars.		
			30			30				
			30			30				
			125			125				
			25			25				
			25			25				
			100			100				
			30			30				
			30			30				
			220			220				
			20			20				
			125			125				
			150			165			170	on N. Dickerson St. Gamma Maps W/2
			30			30			30	
			230			230			230	
			165			170			170	
			30			30			30	
			30			30			30	
			115			120			120	
			25			20			20	
			330	200	100	330			330	
			330	200	100	330			330	
			230	200		230			230	
			15			15			20	
			115	100		115			120	
			15			15			20	
			150	150		150			150	
			115	100		115			120	
			30			30			30	
			120	100		120			120	



IN WHOSE NAME ASSESSED.	DESCRIPTION OF PROPERTY.							Value of Lots. Dollars.	VALUE OF ALL BUILDINGS.			Total Value of Lots and Buildings. Dollars.	Amount Added or Deducted by Co. Board of Equalization.		Total Value as Equalized by Co. Board. Dollars.	Amount Added or Deducted by State Board of Equalization.		Total Value as Equalized by State Board. Dollars.	REMARKS.
	No. of In-Lot.	No. of Out-Lot.	What Part.	Street.	Feet.	Street.	Feet.		Houses.	Mills.	Other Buildings.		Added Dollars.	Deducted Dollars.		Added Dollars.	Deducted Dollars.		
	Dollars.	Dollars.	Dollars.	Dollars.	Dollars.	Dollars.	Dollars.		Dollars.	Dollars.	Dollars.		Dollars.	Dollars.		Dollars.	Dollars.		
State of Ohio																			
Same Leonard Piskey	✓	16	all	West	66		165	25				25			30	✓			
Same Henry Fullon	✓	56		West	97.50		132	20				20			20	✓			
Same A.D. Funks	✓		Lease of R.R. Lands.								100				100	✓			
Tompson Josephine M	✓	34	all	Broad	66	Walnut	165	30	200			200			230	✓			
Taylor Emma L-	✓	54		Main	66	alley	165	30	300			330			330	✓			
Same	✓	55		Do	66	West-	165	30	200	100		330			330	✓			
Taylor Nancy H.	✓	13		West	66	alley	165	25	100			125			130	✓			
Taylor L.B.	✓		Cor Main's front	W of #59				10				10			10	✓			
The Union Banking Co.	✓	5	all	Main	66	collage	165	30	370			400			400	✓			
Taylor J.B.	✓	83	W <sup>2</sup>	front	66	alley	82.50	15				15			20	✓			L. Culver
Wright A.J.	✓	45	all	Broad	66	alley	165	30	100			130			130	✓			
Watts J.J.	✓	49		West	66	West-	165	25				25			30	✓			
Watts J.S.	✓	6	St.	Main	22	collage	84	15	200			215			220	✓			
Welch Nathaniel	✓	31	all	Broad	66	Cranton	165	30	200			230			230	✓			
Same	✓	32		Do	66	alley	165	30		100		30			30	✓			
Welch Frank	✓	22	pt	Main	66	Do	117	30	300			330			330	✓			
Witbrek Ida E.	✓	48	all	Do	66	West	165	30	100			130			130	✓			
Yoder Elizabeth	✓	82	W <sup>2</sup>	front	66	Do	82.50	15				15			20	✓			
Yamnglori John	✓	88	all	Broad	66	alley	165	25	200			225			230	✓			
Broadway T.P. Hall						front		60	600			600							
									2370	100		2915							



**TAYLOR TP.  
UNION COUNTY  
1900**