

WASHINGTON
UNION COUNTY
1900

APPRAISER'S OATH.

The State of Ohio, Union County, ss.

I, J. B. Johnson Land Appraiser for
Washington Township, in the County of Union, and State of Ohio, do solemnly swear
that the return to which this is attached contains a correct description of each parcel of Real Property, within said district, as far
as I have been able to ascertain the same, and that the value attached to each parcel in said return is, as I verily believe, the full
value thereof. Estimated agreeably to the rules prescribed therefor in the act for levying taxes on all property of this State, accord-
ing to its true value.

Signed, _____ Appraiser of said Township.

Sworn and subscribed to before me, the undersigned authority, this

1st day of Sept A. D. 1900.

Signed, Edward M. Luning
Auditor of said County.

TREA

ES
27
30
3
4
6
7
13
17
16
18
19
20
27
28
24
30
1
3
4

in full

\$ 85

APPRAISER'S ACCOUNT.

TREASURY OF UNION COUNTY.

To *J. B. Johnson* Land Appraiser of *Washington* Township, Dr.

THE DATE OF EACH DAY	
Employed in making said Appraisement, was as follows:	
2 nd day of <i>March</i>	7 day of <i>March</i>
3 rd day of "	15 th day of "
3 day of <i>April</i>	18 day of "
4 day of "	24 day of "
6 day of "	26 th day of "
7 day of "	28 day of "
13 day of "	29 day of "
14 day of "	1 day of <i>June half</i>
16 day of "	2 day of <i>One day</i>
18 day of "	6 day of " "
19 day of "	7 day of " "
20 day of "	8 day of " "
21 day of "	9 day of " "
23 day of "	12 day of " "
24 day of "	14 day of " "
30 day of "	15 th day of " "
1 day of <i>May</i>	16 day of " "
3 day of "	18 day of " "
4 day of "	19 day of " "
	22 " "
	23 " "
	27 " "

For services rendered in appraising the Real Estate of said Township, for the year 1900, occupying *40th* days, between the *2nd* day of *March* and the *27* day of *June* at \$ *2⁰⁰* per day, \$ *81⁰⁰*

And the said *J. B. Johnson* being duly sworn, solemnly declares that the number of days herein stated, were necessarily occupied in the appraisement of said Township, and that this account is in all respects just and true.

(Signed) *J. B. Johnson*, Appraiser.

Sworn to and subscribed before me, this *1st* day of *Sept.* 1900.

(Signed) *Edward M. Fullington*
Auditor of said County.

Received, *Sept. 1 -* 1900, of the Auditor of Union County, an order on the Treasurer of said County, for

Eighty Five Dollars, *twenty five* Cents,

in full of the above account.

\$ *85⁹⁵*

40th July 16th 1900 (Signed) *J. B. Johnson*, Appraiser.
Postage 2.95
2.00
4.95 1 day with Board Equalization

OFFICIAL STATEMENT OF SURVEYS.

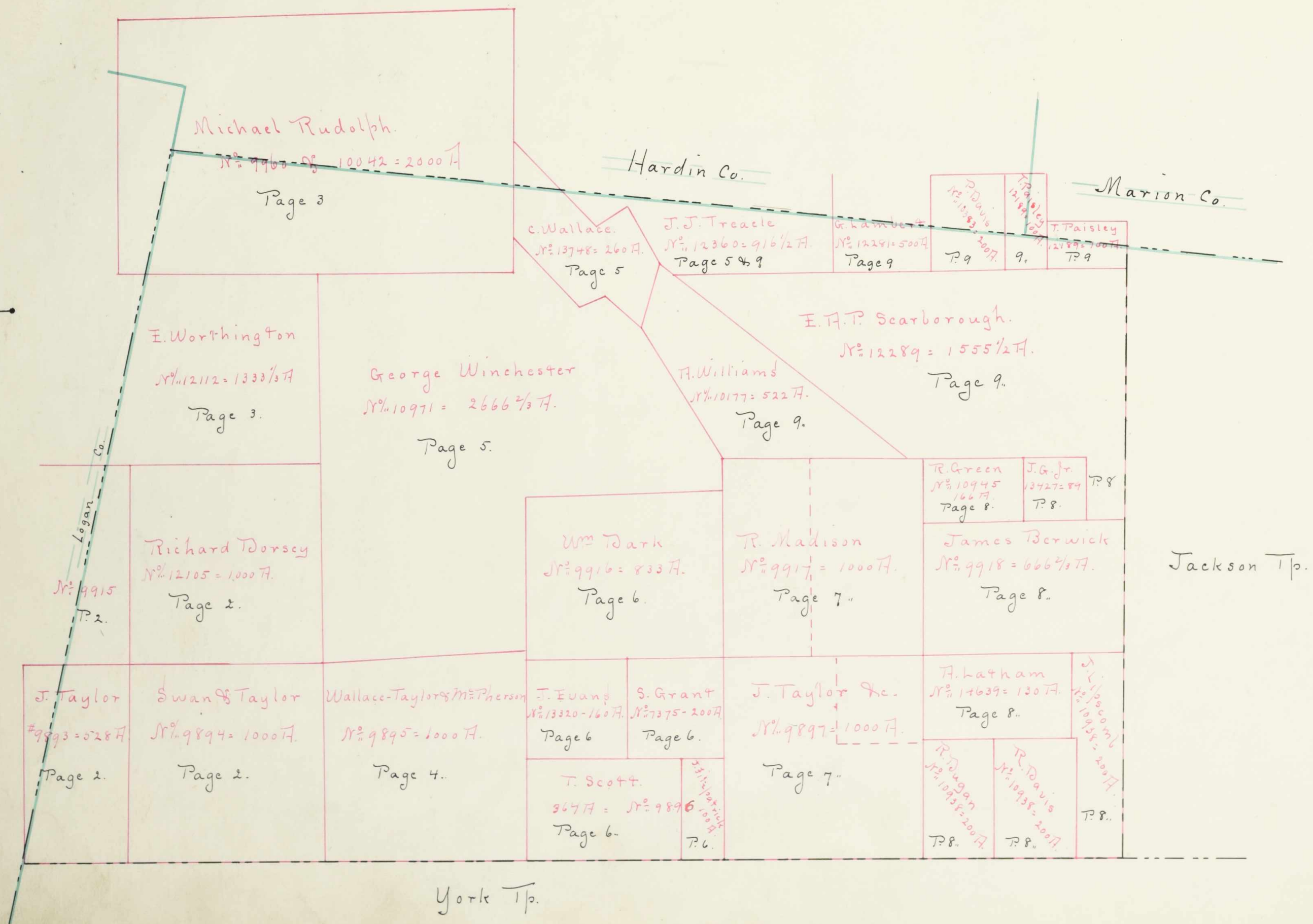
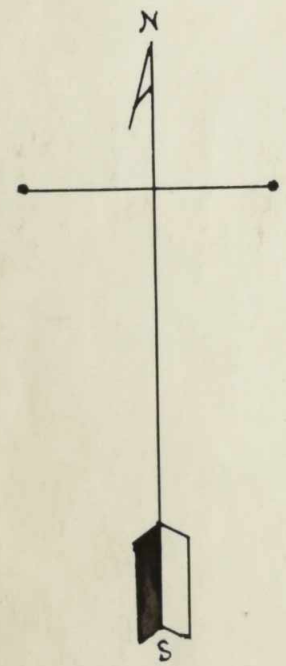
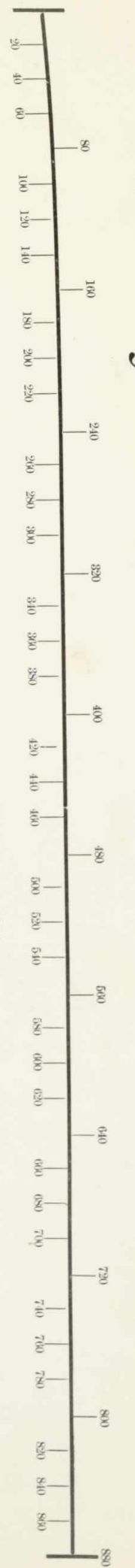
No. of Original Survey.	Original Quantity.	Original Proprietors.	Water Course.	Page.
7375	200	Squire Grant	Rush Creek	6
9893	528	M. J. Ramsdale and J. Taylor	Boker Creek	2
9894	1000	John Swan and James Taylor	Boker Creek	2
9895	1000	J. Wallace-J. Taylor and J. M. Pherson	Boker Creek	4
9896	364	Thomas Scott	Rush Creek	6
9896	100	James Fitzpatrick	Rush Creek	6
9897	815	J. Taylor and R. Sayre and others	Scioto River	7
9897	185	J. Taylor and N. Taliaferro	Scioto River	7
9915	959	W. and J. Tibbs and M. Vanderwall	Boker Creek	2
9916	833	William Dark	Rush Creek	6
9917	400	Rowland Madison (Rep's)	Rush Creek	7
9917	600	Same	Same	7
9918	666 ² / ₃	James Berwick	Rush Creek	8
9960 and 10042	2000	Michael Rudolph (Representatives)	Rush Creek	3
10177	522	Abraham J. Williams	Rush Creek	9
10383	200	Presley Davis (Rep's)	Scioto River	9
10938	200	Richard Davis	Rush Creek	8
10938	200	Robert Dugan	Rush Creek	8
10938	200	John Lipscomb	Rush Creek	8
10945	166	Robert Green	Rush Creek	8
10971	2666 ² / ₃	George Winchester (Rep's)	Rush Creek	5

OFFICIAL STATEMENT OF SURVEYS.

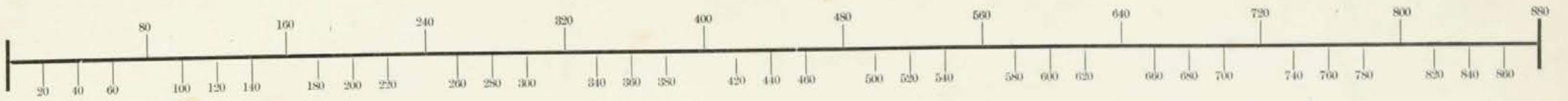
Page.	No. of Original Survey.	Original Quantity.	Original Proprietors.	Water Course.	Page.
6	12105	1000	Richard Dorsey	Bokes creek	2
	12112	1333 $\frac{1}{3}$	A. R. Worthington	Rush creek	3
2	12189	100	T. Paisley	Scioto River	9
2	12189	100	Same	Same	9
4	12281	500	George Lambert		9
6	12289	1555 $\frac{1}{2}$	C. H. Scarborough.	Rush creek	9
6	12360	916 $\frac{1}{2}$	J. J. Treacle.	Rush creek	9
7					
7	13320	160	J. Evans.		6
2	13427	89	James Galloway Jr.	Rush creek	8
6	13748	260	badwallader Wallace	Rush creek	5
7					
7	14639	130	Allen Latham	Rush creek	8
8					
3					
9					
9					
8					
8					
8					
8					

WE HEREBY CERTIFY, that the foregoing is a true Schedule of the Original Surveys, Quantities, Proprietors, and Water Courses, taken from the Official Records, in the offices of the Auditor and Surveyor of Union County, Ohio, in which are situate the Lands and Lots assessed for taxation in _____ Township, Union County, Ohio.

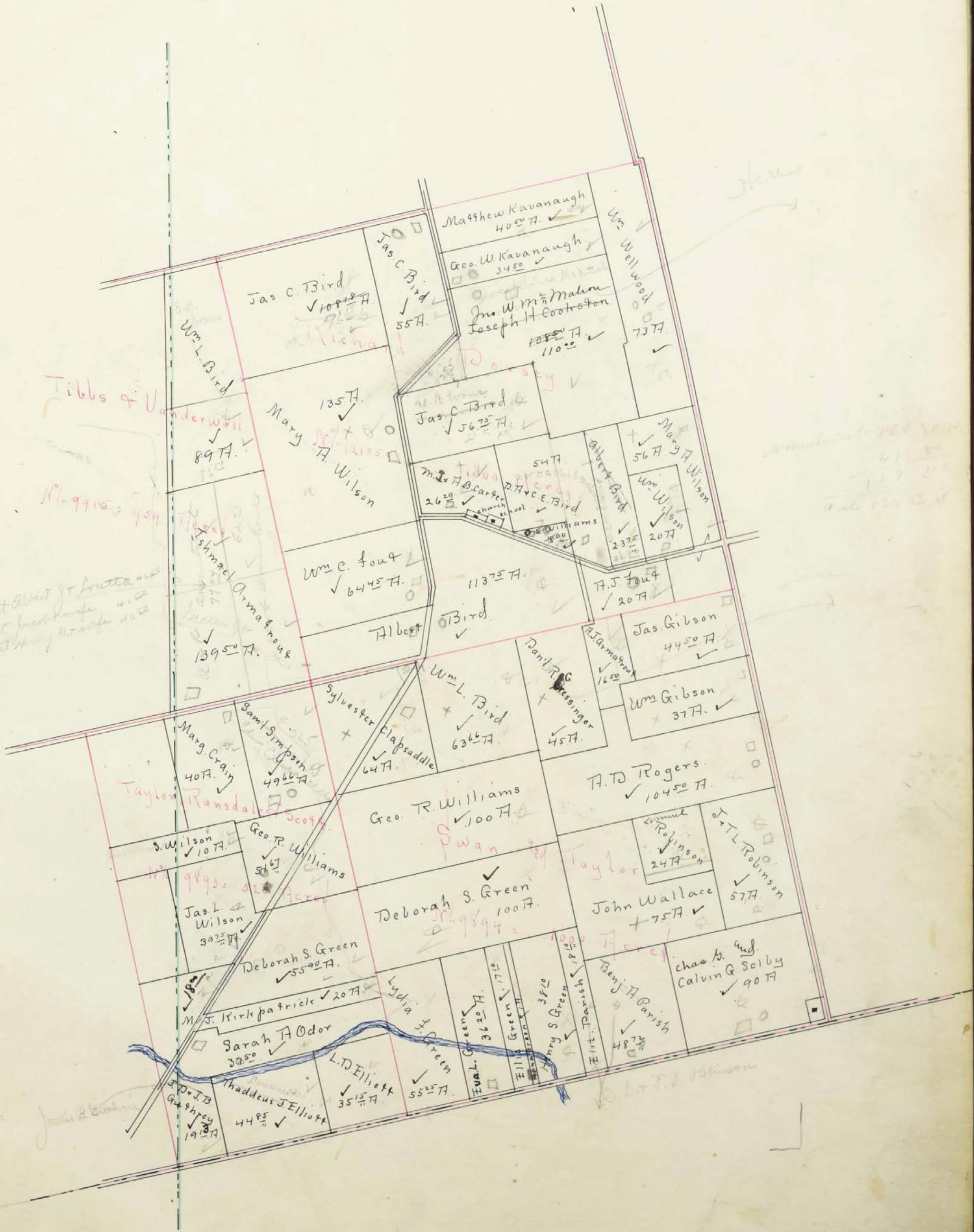
Survey. No.



Survey. No. 12105-9915-9893-9894

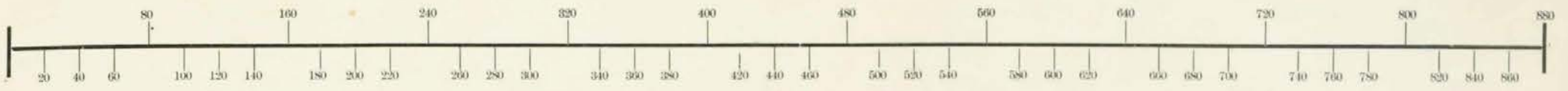


SCALE, 80 POLES TO AN INCH.

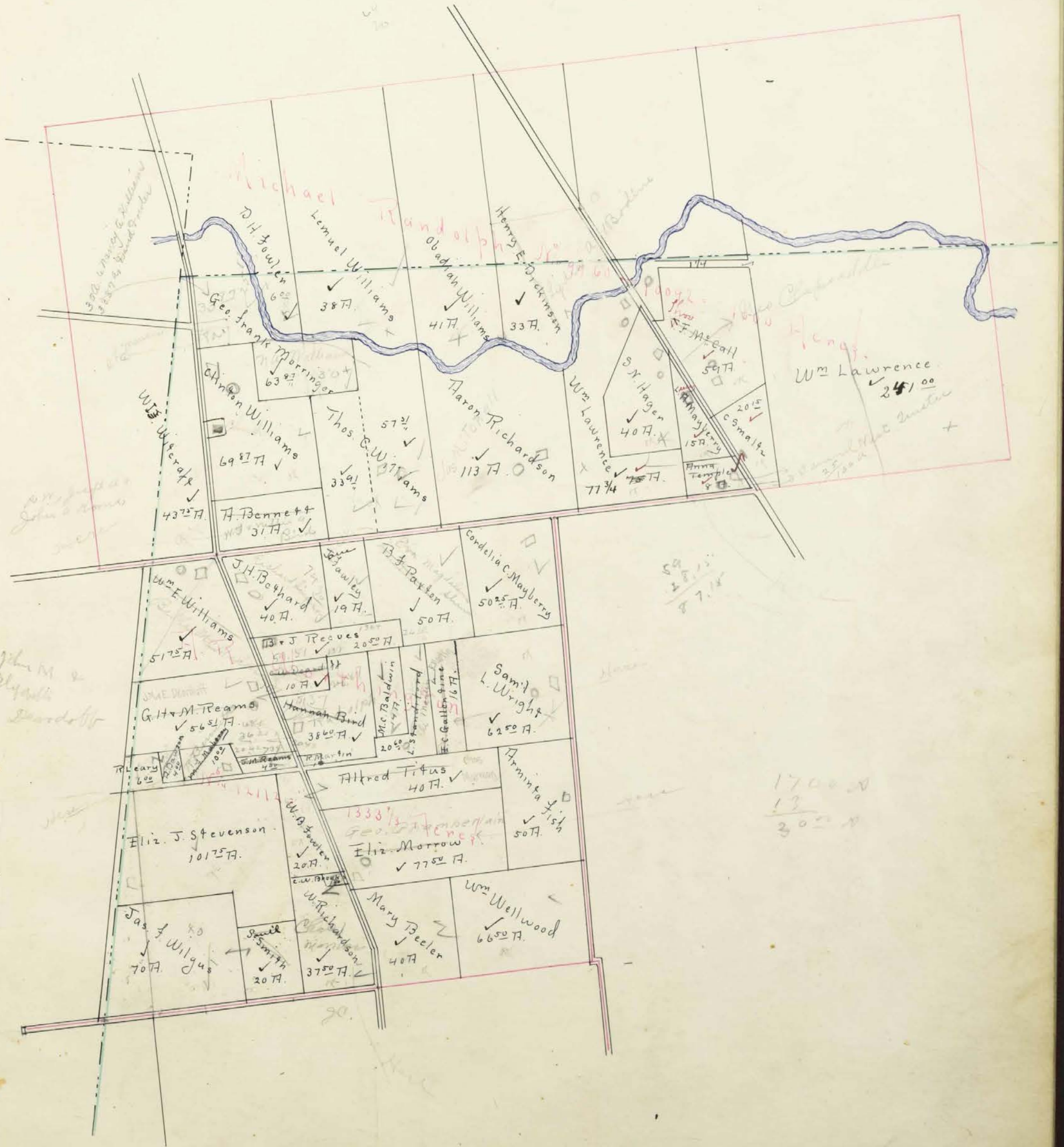


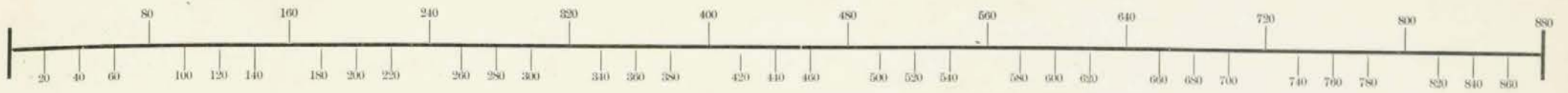
Commitment West of front
Commitment front bank
Commitment West of bank

16-1
19-1



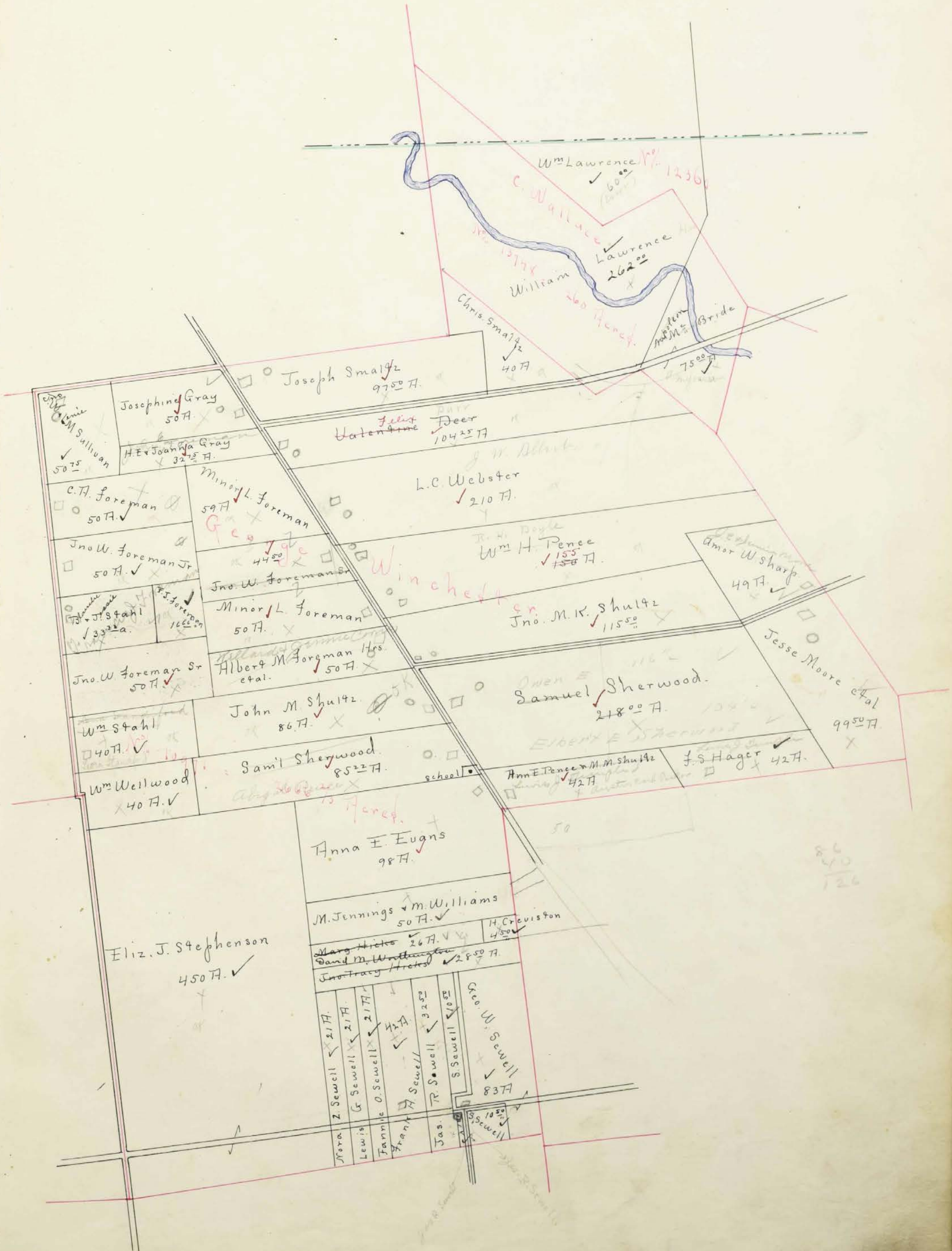
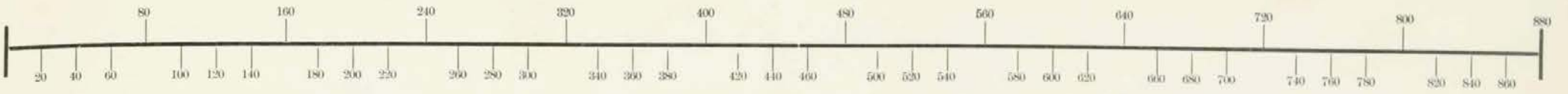
SCALE, 80 POLES TO AN INCH.





SCALE, 80 POLES TO AN INCH.





M Sullivan
50.75

Joseph Gray
50 A.

Joseph Smaltz
97.50 A.

H. & E. Joanna Gray
32.5 A.

Minor L. Foreman
59 A.

L.C. Webster
210 A.

C.A. Foreman
50 A.

Jno W. Foreman Jr
50 A.

Jno W. Foreman Sr
44.50 A.

Wm H. Pence
155 A.

J.J. Stahl
33.25 A.

Minor L. Foreman
50 A.

Jno. M. K. Shultz
115.50 A.

Jno. W. Foreman Sr
50 A.

Albert M. Foreman
50 A.

Samuel Sherwood
218.00 A.

Wm Stahl
40 A.

John M. Shultz
86 A.

Amos W. Sharp
49 A.

Wm Wellwood
40 A.

Sam'l Shegwood
85.25 A.

Jesse Moore et al
99.50 A.

Anna F. Eughs
98 A.

M. Jennings & M. Williams
50 A.

Eliz. J. Stephenson
450 A.

Marg Hicks
26 A.

David M. Worthington
28.50 A.

Z. Sewell
21 A.

G. Sewell
21 A.

Fannie O. Sewell
21 A.

Frank Sewell
42 A.

Jas. R. Sewell
32.50 A.

S. Sewell
10.50 A.

Jas. Sewell
10.50 A.

S. Sewell
10.50 A.

Geo. W. Sewell
83 A.

S. Sewell
10.50 A.

S. Sewell
10.50 A.

S. Sewell
10.50 A.

S. Sewell
10.50 A.

S. Sewell
10.50 A.

S. Sewell
10.50 A.

S. Sewell
10.50 A.

S. Sewell
10.50 A.

S. Sewell
10.50 A.

S. Sewell
10.50 A.

S. Sewell
10.50 A.

S. Sewell
10.50 A.

S. Sewell
10.50 A.

S. Sewell
10.50 A.

S. Sewell
10.50 A.

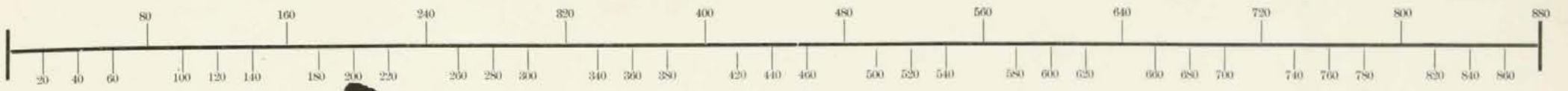
S. Sewell
10.50 A.

S. Sewell
10.50 A.

S. Sewell
10.50 A.

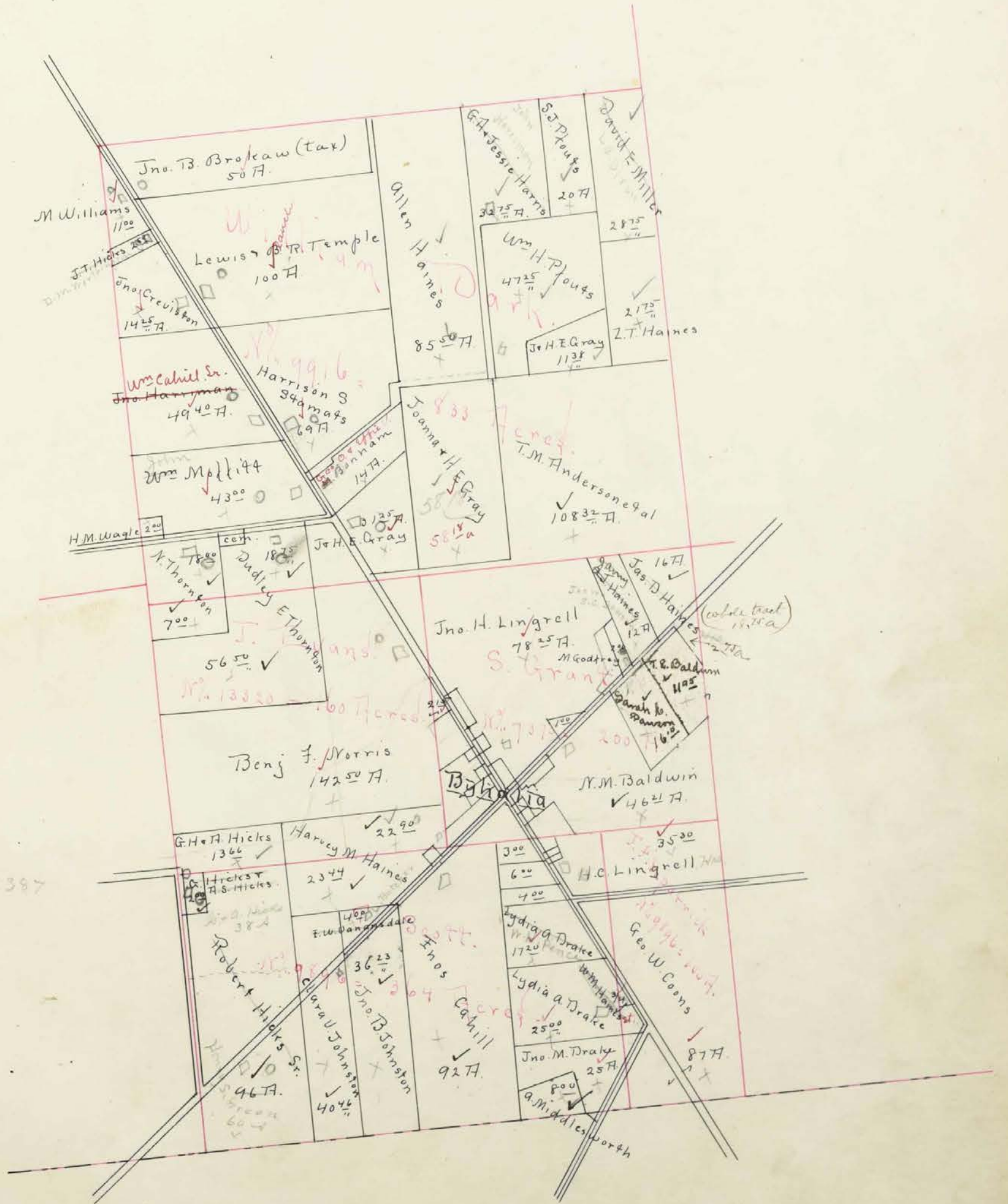
S. Sewell
10.50 A.

S. Sewell
10.50 A.



SCALE, 80 POLES TO AN INCH.

13.56
22.00
06.56



Survey as per map 3-387

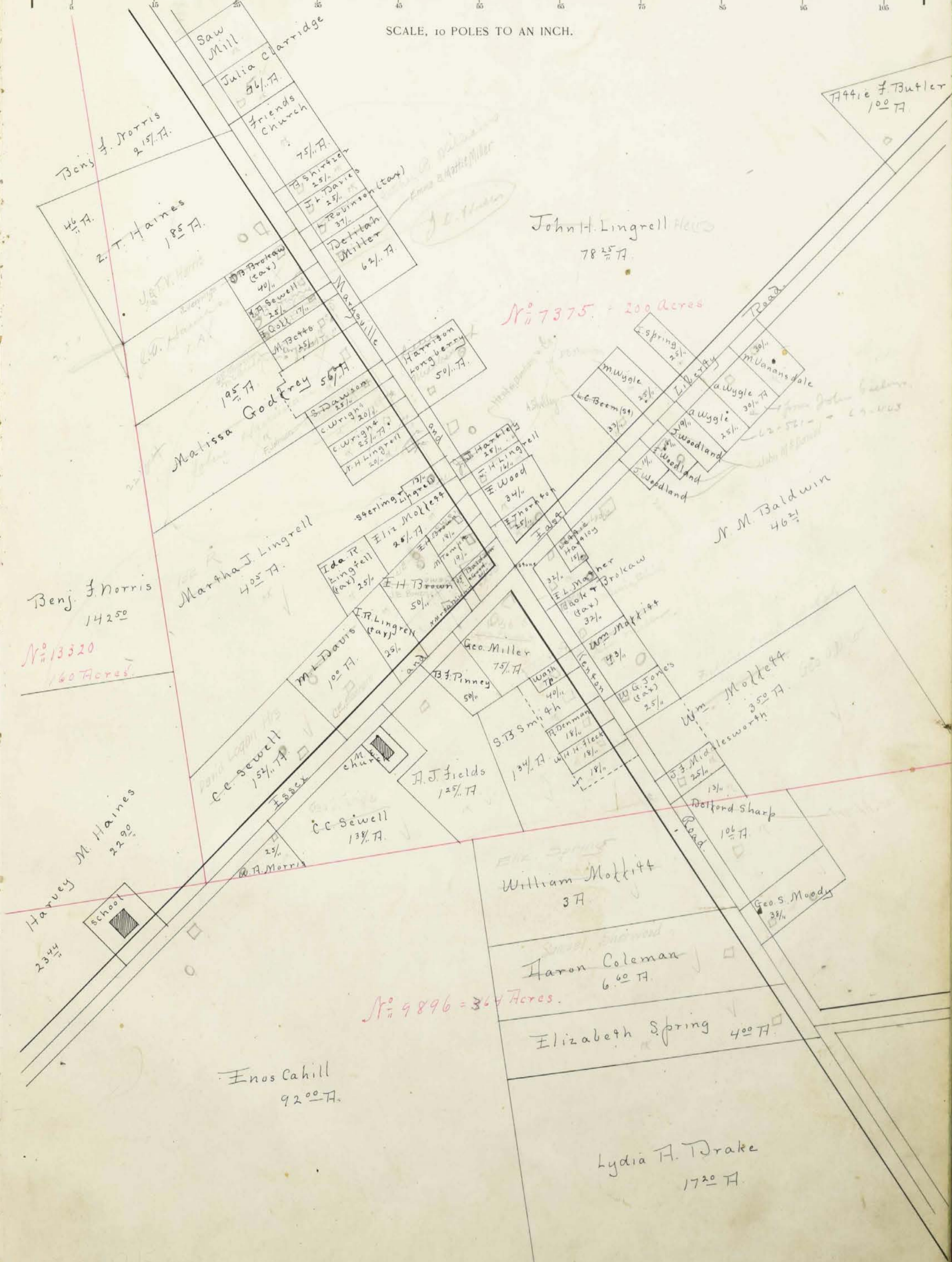
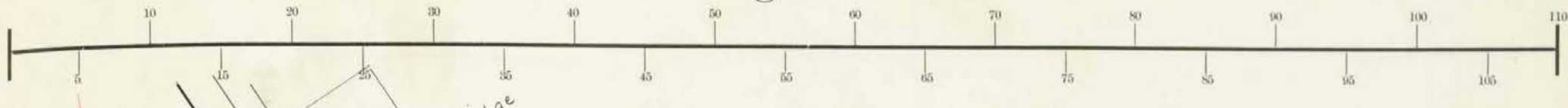


SCALE, 80 POLES TO AN INCH.



OK

Town of Byhalia



In Whose Name Assessed.	No. of Entry.	Original Quantity.	Original Proprietor.	Unincorporated Towns.	Feet Front.	No. of Acres of Land Classified.						Whole No. of Acres.	Value per Acre excluding Buildings.	Total Value of Lands, excluding Buildings.	Value of all Buildings.			Total Value of Lands and Buildings.	Amount Added or Deducted by Co. Board of Equalization.		Total Value as Equalized by Co. Board.	Amount Added or Deducted by State Board of Equalization.		Total Value as Equalized by State Board.	Page.	REMARKS.
						Arable and Plow Land.		Meadow and Pasture Land.		Uncultivat'd and Wood Land.					Houses.	Mills.	Other Buildings.		Added Dollars.	Deducted Dollars.		Added Dollars.	Deducted Dollars.			
						Acres.	H.	Acres.	H.	Acres.	H.				Acres.	H.	Dollars.		Dollars.	Dollars.		Dollars.	Dollars.			
<i>Amatout Ismael</i>	<i>9913</i>	<i>959</i>	<i>Sible & Vanderwal</i>			<i>100</i>						<i>39 50</i>			<i>1955</i>			<i>1955</i>	<i>59</i>		<i>2000</i>			<i>16</i>		
<i>Acton Kate</i>	<i>9917</i>	<i>900</i>	<i>R. Madison</i>			<i>47</i>	<i>20</i>					<i>75</i>	<i>19</i>	<i>1425</i>	<i>125</i>		<i>100</i>	<i>1650</i>	<i>58</i>		<i>1650</i>			<i>17</i>		
<i>Acton William</i>	"	"	<i>Do</i>			<i>7</i>		<i>9 20</i>				<i>8 20</i>	<i>20</i>	<i>165</i>			<i>165</i>	<i>5</i>		<i>160</i>			<i>15</i>			
<i>Audison T.M. et al</i>	<i>9916</i>	<i>833</i>	<i>W. Darke</i>			<i>58 32</i>						<i>58</i>		<i>108 32</i>	<i>16</i>			<i>1735</i>	<i>52</i>		<i>1790</i>			<i>11</i>		
<i>Amatout Albert J</i>	<i>9894</i>	<i>1000</i>	<i>Swan & Taylor</i>			<i>16 50</i>						<i>16 50</i>	<i>15</i>	<i>250</i>				<i>250</i>	<i>8</i>		<i>260</i>			<i>11</i>		
<i>Appleby E. et al</i>	<i>12289</i>	<i>555 1/2</i>	<i>E.R. Scarborough</i>			<i>36</i>						<i>14</i>		<i>50</i>	<i>17</i>	<i>750</i>	<i>125</i>	<i>100</i>	<i>1075</i>	<i>32</i>		<i>1100</i>			<i>5</i>	
<i>Bird Daul & Clara E.</i>	<i>12105</i>	<i>1000</i>	<i>R. Doney</i>			<i>26</i>	<i>10</i>					<i>18</i>		<i>52</i>	<i>16</i>	<i>765</i>			<i>765</i>	<i>26</i>		<i>890</i>			<i>6</i>	
<i>Bird Hannah</i>	<i>12112</i>	<i>1333 1/3</i>	<i>E.R. Worthington</i>			<i>38 60</i>	<i>5</i>					<i>38 60</i>	<i>16</i>	<i>620</i>	<i>150</i>			<i>770</i>	<i>23</i>		<i>790</i>			<i>8</i>		
<i>Bird Albert</i>	<i>12105</i>	<i>1000</i>	<i>R. Doney</i>			<i>44 75</i>	<i>28</i>					<i>41</i>		<i>113 75</i>	<i>17</i>	<i>1935</i>	<i>100</i>	<i>100</i>	<i>2135</i>	<i>64</i>		<i>2150</i>			<i>41</i>	
<i>Same</i>	"	"	<i>Do</i>			<i>18 75</i>						<i>5</i>		<i>23 75</i>	<i>16</i>	<i>370</i>			<i>370</i>	<i>11</i>		<i>390</i>			<i>11</i>	
<i>Bird James C</i>	"	"	<i>Do</i>			<i>47</i>	<i>8</i>					<i>47</i>	<i>8</i>	<i>53</i>	<i>17</i>	<i>735</i>	<i>100</i>	<i>100</i>	<i>1115</i>	<i>36</i>		<i>1200</i>			<i>18</i>	
<i>Same</i>	"	"	<i>Do</i>			<i>10</i>						<i>98 18</i>		<i>108 18</i>	<i>12</i>	<i>1300</i>			<i>1300</i>	<i>39</i>		<i>1320</i>			<i>24</i>	
<i>Same</i>	"	"	<i>Do</i>			<i>43 75</i>						<i>13</i>		<i>56 75</i>	<i>16</i>	<i>910</i>			<i>910</i>	<i>27</i>		<i>920</i>			<i>15</i>	
<i>Bird Mrs. L</i>	<i>9915</i>	<i>959</i>	<i>Sible & Underhill</i>			<i>3 36</i>						<i>89</i>		<i>89</i>	<i>12</i>	<i>1070</i>			<i>1070</i>	<i>32</i>		<i>1100</i>			<i>5</i>	
<i>Same</i>	<i>9894</i>	<i>1000</i>	<i>Swan & Taylor</i>			<i>22 66</i>						<i>31</i>		<i>63 66</i>	<i>17</i>	<i>1080</i>			<i>1080</i>	<i>32</i>		<i>1110</i>			<i>11</i>	
<i>Burnside Nathan</i>	<i>13727</i>	<i>89</i>	<i>J. Galloway Jr.</i>			<i>67</i>	<i>13</i>	<i>22</i>				<i>22</i>		<i>75 20</i>	<i>14</i>	<i>1430</i>	<i>100</i>	<i>100</i>	<i>1630</i>	<i>49</i>		<i>1680</i>			<i>34</i>	
<i>Same</i>	<i>10945</i>	<i>166</i>	<i>R. Kruen</i>			<i>26 71</i>		<i>16</i>				<i>16</i>		<i>32 71</i>	<i>10</i>	<i>685</i>			<i>680</i>	<i>21</i>		<i>710</i>			<i>11</i>	
<i>Same</i>	<i>9918</i>	<i>666 2/3</i>	<i>J. Bernwick</i>			<i>14 20</i>						<i>70</i>		<i>14 20</i>	<i>20</i>	<i>270</i>	<i>300</i>	<i>100</i>	<i>670</i>	<i>21</i>		<i>700</i>			<i>8</i>	
<i>Same</i>	"	"	<i>Do</i>			<i>70</i>						<i>70</i>		<i>70</i>		<i>10</i>			<i>10</i>			<i>20</i>			<i>12</i>	
<i>Burnett Abigail</i>	<i>9960+</i>	<i>2000</i>	<i>M. Rudolph</i>			<i>31</i>						<i>31</i>	<i>19</i>	<i>590</i>				<i>590</i>	<i>18</i>		<i>600</i>			<i>8</i>	<i>Frank Humphrey</i>	
<i>Bepp Henry</i>	<i>9895</i>	<i>1000</i>	<i>J. Wallace et al</i>			<i>43</i>	<i>4</i>	<i>3</i>				<i>43</i>	<i>4</i>	<i>50</i>	<i>17</i>	<i>850</i>	<i>125</i>	<i>100</i>	<i>1075</i>	<i>32</i>		<i>1090</i>			<i>10</i>	
<i>Same</i>	"	"	<i>Do</i>			<i>20</i>		<i>5</i>				<i>20</i>		<i>35</i>	<i>15</i>	<i>525</i>			<i>525</i>	<i>16</i>		<i>530</i>			<i>10</i>	
<i>Beuler Mary</i>	<i>12112</i>	<i>1333 1/3</i>	<i>E.R. Worthington</i>			<i>28</i>		<i>12</i>				<i>28</i>		<i>40</i>	<i>15</i>	<i>600</i>			<i>600</i>	<i>18</i>		<i>610</i>			<i>7</i>	
<i>Baldwin Mary C</i>	"	"	<i>Do</i>			<i>13</i>		<i>1</i>				<i>13</i>		<i>14</i>	<i>14</i>	<i>195</i>			<i>195</i>	<i>6</i>		<i>200</i>			<i>11</i>	
<i>Bethard J. H.</i>	"	"	<i>Do</i>			<i>40</i>						<i>40</i>		<i>40</i>	<i>16</i>	<i>640</i>	<i>100</i>		<i>740</i>	<i>22</i>		<i>760</i>			<i>7</i>	
<i>Bonham Maggie</i>	<i>9916</i>	<i>833</i>	<i>W. Darke</i>			<i>14</i>						<i>14</i>	<i>20</i>	<i>280</i>	<i>200</i>	<i>100</i>	<i>580</i>	<i>17</i>		<i>590</i>		<i>590</i>			<i>5</i>	
<i>Berry Wm H.</i>	<i>9917</i>	<i>400</i>	<i>R. Madison</i>			<i>44 58</i>	<i>10</i>					<i>44 58</i>	<i>10</i>	<i>57 58</i>	<i>19</i>	<i>980</i>	<i>100</i>		<i>1080</i>	<i>32</i>		<i>1110</i>			<i>5</i>	
<i>Baldwin N. M.</i>	<i>7375</i>	<i>200</i>	<i>S. Krant</i>	<i>Byhalia</i>		<i>31 21</i>	<i>15</i>					<i>31 21</i>	<i>15</i>	<i>46 21</i>	<i>21</i>	<i>970</i>	<i>200</i>		<i>1170</i>	<i>35</i>		<i>1200</i>			<i>8</i>	
<i>Baldwin N. M. & G. J.</i>	"	"	<i>Do</i>	"		<i>20</i>						<i>20</i>		<i>20</i>		<i>25</i>		<i>300</i>	<i>325</i>	<i>10</i>		<i>340</i>			<i>11</i>	
<i>Bette Margaret</i>	"	"	<i>Do</i>	"	<i>50</i>	<i>25</i>						<i>25</i>		<i>25</i>	<i>100</i>	<i>20</i>			<i>120</i>	<i>4</i>		<i>120</i>			<i>12</i>	
<i>Beard Elizabeth</i>	<i>10945</i>	<i>166</i>	<i>R. Kruen</i>			<i>28 56</i>	<i>16</i>	<i>2</i>				<i>28 56</i>	<i>16</i>	<i>46 56</i>	<i>14</i>	<i>650</i>			<i>650</i>	<i>20</i>		<i>660</i>			<i>10</i>	
<i>Same</i>	"	"	<i>Do</i>			<i>40</i>						<i>40</i>		<i>40</i>	<i>14</i>	<i>560</i>			<i>560</i>	<i>17</i>		<i>570</i>			<i>10</i>	
<i>Baldwin J. E.</i>	<i>7375</i>	<i>200</i>	<i>S. Krant</i>	<i>Byhalia</i>		<i>11 95</i>						<i>11 95</i>		<i>11 95</i>	<i>19</i>	<i>225</i>			<i>225</i>	<i>7</i>		<i>230</i>			<i>5</i>	
<i>Beard A. H.</i>	<i>12860</i>	<i>946 1/2</i>	<i>J. J. Treacle</i>			<i>50</i>						<i>50</i>		<i>50</i>	<i>14</i>	<i>700</i>	<i>100</i>		<i>800</i>	<i>24</i>		<i>820</i>			<i>11</i>	
<i>Butler Atter F.</i>	<i>7375</i>	<i>200</i>	<i>S. Krant</i>	<i>Byhalia</i>		<i>1</i>						<i>1</i>	<i>25</i>	<i>25</i>		<i>25</i>			<i>25</i>			<i>30</i>			<i>11</i>	
<i>Brooks Chas W.</i>	<i>12112</i>	<i>1333 1/3</i>	<i>E.R. Worthington</i>			<i>1</i>						<i>1</i>	<i>15</i>	<i>15</i>	<i>100</i>	<i>110</i>			<i>120</i>	<i>3</i>		<i>120</i>			<i>11</i>	
<i>Baldwin N. M. & G. J.</i>	<i>7375</i>	<i>200</i>	<i>S. Krant</i>	<i>Byhalia</i>	<i>21</i>	<i>05</i>						<i>05</i>	<i>10</i>	<i>10</i>		<i>10</i>			<i>10</i>			<i>10</i>			<i>11</i>	
<i>Bowen Edward H.</i>	"	"	<i>Do</i>	<i>Do</i>	<i>97</i>	<i>18</i>						<i>18</i>		<i>18</i>	<i>150</i>	<i>170</i>			<i>170</i>	<i>5</i>		<i>180</i>			<i>11</i>	
<i>Same</i>	"	"	<i>Do</i>	<i>Do</i>	<i>110</i>	<i>50</i>						<i>50</i>		<i>50</i>		<i>225</i>	<i>250</i>		<i>225</i>	<i>8</i>		<i>260</i>			<i>11</i>	
<i>Brokaw John B. (Fas)</i>	<i>12289</i>	<i>1555 1/2</i>	<i>E.R. Scarborough</i>			<i>113 20</i>		<i>40</i>				<i>113 20</i>	<i>16</i>	<i>183 20</i>	<i>16</i>	<i>2450</i>	<i>100</i>		<i>2550</i>	<i>77</i>		<i>2618</i>			<i>22</i>	
<i>Same</i>	<i>9916</i>	<i>833</i>	<i>W. Darke</i>			<i>45</i>	<i>5</i>					<i>45</i>	<i>5</i>	<i>50</i>	<i>19</i>	<i>950</i>			<i>950</i>	<i>29</i>		<i>970</i>			<i>10</i>	
<i>Same</i>	<i>7375</i>	"	<i>Do</i>			<i>40</i>						<i>40</i>		<i>40</i>		<i>25</i>	<i>200</i>		<i>225</i>	<i>7</i>		<i>230</i>			<i>11</i>	
<i>Bonham C. E.</i>	<i>7375</i>	<i>200</i>	<i>S. Krant</i>	<i>Byhalia</i>	<i>207</i>	<i>1</i>						<i>1</i>	<i>50</i>	<i>150</i>	<i>100</i>	<i>100</i>	<i>250</i>	<i>8</i>		<i>260</i>		<i>260</i>			<i>11</i>	
<i>Ballinger James</i>	<i>9897</i>	<i>1000</i>	<i>Taylor, Dayer et al</i>			<i>30</i>						<i>30</i>	<i>20</i>	<i>600</i>	<i>100</i>	<i>700</i>			<i>700</i>	<i>21</i>		<i>710</i>			<i>16</i>	<i>H. K. Cahill</i>
						<i>1218 02</i>							<i>1867 90</i>				<i>29875 2078</i>			<i>1475 34025</i>						

In Whose Name Assessed.	No. of Entry.	Original Quantity.	Original Proprietor.	Unincorporated Towns.	Feet Front.	No. of Acres of Land Classified.						Whole No. of Acres.	Value per Acre excluding Buildings.	Total Value of Lands, excluding Buildings.	Value of all Buildings.			Total Value of Lands and Buildings.	Amount Added or Deducted by Co. Board of Equalization.		Total Value as Equalized by Co. Board.	Amount Added or Deducted by State Board of Equalization.		Total Value as Equalized by State Board.	Page.	REMARKS.				
						Arable and Plow Land.	Meadow and Pasture Land.	Uncultivat'd and Wood Land.		Houses.	Mills.				Other Buildings.	Added Dollars.	Deducted Dollars.		Added Dollars.	Deducted Dollars.										
								Acres.	H.													Acres.	H.							
Good Brookaw	7375	200	S. Grant	Byhalia	99	32						32	50	100				125	4		130									
Loe Ella	9918	66 2/3	J. Berwick			30						30	18	540				540	16		560									
Calull Enos	9896	364	F. Scott			80			12			92	18	1655	100			1755	52		1800						7			
Cous Geo. W.	"	100	J. Fitzpatrick			71	2	14				87	18	1565				1565	48		1570						43			
Same	9897	815	J. Taylor et al			40	10	10				50	10	800	100			900	27		930									
Clapsaddle Sylvester	9894	1000	Swan & Taylor			53	5	6				64	14	900				900	27		900						23			
Cremston Evaline	9897	815	Taylor			10	15					25	18	460				460	14		460						9			
Cremston Lemmel	"	"	Do			21	7	4				25	75	18	460	300			760	23		780					9			
Same	"	"	Do			65						65	20	115				115			90									
Cookston Joseph H.	12105	1000	T. Dorsey			88	50	8	20			108	50	16	1735	100	100	1935	59		1980						17	W.C. Miller		
Chapman Jos H.	14639	130	T. Latham			43	33	8	12			60	33	19	1145	100		1245	37		1270						10			
Co J D	"	"	Do			33	67	20				33	67	20	675			675	20		690						5			
Same	9918	66 2/3	J. Berwick			8						8	11	145				145	4		150									
Clemson Aaron	9896	364	F. Scott	Byhalia		6	60	20				6	60	20	130	100		230	7		230							4		
Clarridge Julia	7375	200	S. Grant	Do	116	50	70					70		20	100			120	4		120									
Calull William	9895	1000	J. Wallace			5		16				5	16	80				80	2		80									
Cremston John	9916	833	R. Daske			14	25					14	25	18	255	150		405	12		400							13		
Crain Margant	9983	528	J. Taylor et al			34	6					40	18	600	100			700	21		710							8		
Chapman W G	7375	200	S. Grant	Byhalia	87	25						25		100				125	4		130									
Chenoweth J. H.	9917	600	R. Madison			50	3	2				53	15	825	100			925	25		940						15	25 a + Bldg Successor Chenoweth		
Carter Mary Shadhead B	12105	1000	R. Dorsey			18	29	12	1			26	29	16	420	125		545	16		550							13		
Cremston Hulda	10971	266 2/3	B. W. Winchester			4	50	18				4	50	18	80			80	2		80									
Cressinger Daniel R	9894	1000	Swan & Taylor			41		4				40	14	630				630	19		650									
Cowgill Marion	9917	600	R. Madison			25	5					30	14	420		100	520	16		520								13		
Deer Valentine	10971	266 2/3	B. W. Winchester			94	35	10				104	25	18	1875	200	100	2175	64		2230							7		
Davis Wesley	10938	109 3/8	L. Lipscomb			103	33					103	33	18	1860	325	175	2360	71		2420							10		
Davis Wesley W	"	"	Do			17		8				25	16	400			400	12		410										
Davis Martha J	9918	66 2/3	J. Berwick			9	50	21				9	50	21	200			200	6		200						5	Geo. Watkins		
Davison Arilla	12112	1333 1/3	R. R. Worthington			4						4	10	60				60	2		60								Rhoda Lary	
Demman Abigail	7375	200	S. Grant	Byhalia	50	18						18		15	135			150	5		160								Etta Sansonelle	
Davison Sarah	"	"	Do	"	61	25						25		25				25			30									
Davison Sarah B	"	"	Do	"		16	10					16	10	14	305			305	9		300							15		
Drake John M	9896	464	Scott Fitzpatrick	"		5	20					25	19	475				475	14		470							19		
Drake Lydia	9896	464	Do			24		1				25	19	475	100			675	17		590							6		
Same	"	364	F. Scott			17	20	20				17	20	20	345			345	10		350								8	
Davis Greenburg M	12189	100	T. Parley			12	5					17	17	290				290	9		290								7	
Dixon Lewis O	9918	666 2/3	J. Berwick			40	36	26	14			80	25	16	1285			1285	39		1320								8	W. A. Sanbush
Deardiff Charles W	12112	1333 1/3	R. R. Worthington			10		16				10	16	160		100	260	8		260									4	
Deckinson Henry E	99607	2000	M. Randolph			33		19				33	19	625			125	750	23		770									
Davis Armita Fish	12112	1333 1/3	R. R. Worthington			34		16				50	16	800				800	24		810								16	C. L. + M. Bowen
Davis Jeauille L	7375	200	S. Grant	Byhalia		25						25		20	100			120	4		120									
						109	97	121	26	120													45950							
						1333	22													22816	2435			700	25856					

Assessment of Real Property in *Washington* Township,

Union County, Ohio, for the Year 1900.

In Whose Name Assessed.	No. of Entry.	DESCRIPTION OF PROPERTY.				No. of Acres of Land Classified.						Whole No. of Acres.	Value per Acre excluding Buildings.	Total Value of Lands, excluding Buildings.	Value of all Buildings.			Total Value of Lands and Buildings.	Amount Added or Deducted by Co. Board of Equalization.		Total Value as Equalized by Co. Board.	Amount Added or Deducted by State Board of Equalization.		Total Value as Equalized by State Board.	Page.	REMARKS.						
		Original Quantity.	Original Proprietor.	Unincorporated Towns.	Feet Front.	Arable and Plow Land.		Meadow and Pasture Land.		Uncultivat'd and Wood Land.					Houses.	Mills.	Other Buildings.		Dollars.	Dollars.		Dollars.	Added Dollars.				Deducted Dollars.	Dollars.	Added Dollars.	Deducted Dollars.	Dollars.	
						Acres.	H.	Acres.	H.	Acres.	H.																					Acres.
Eastman Susan	12289	555 1/2	E. P. Scarboro			2							2	20	40			40	1		40											
Elliott Laurence D	9893	528	J. Taylor																													
Elliott Thaddeus J	"	"	Do			25	15						35	15	16			560	17		560						16					
Evans Anna E.	10971	266 2/3	B. Manchester			68		34	85	10			44	85	16			715	21		720						14					
													98	18	1765	100			1765	56		1410						8				
Fields Jonathan	9918	666 2/3	J. Benwick			98	58						106	58	17			1770	59		1980							39				
Fout Roubh	9895	1000	J. Wallaunt			24	48						34	48	16			390	12		400											
Fout A. J.	12105	"	R. Dorsey			20							20	17	240	100			440	13		440						12				
Fisher Jesse	9897	815	Taylor Sayre			4	6	50					10	50	18			190	150		340							16				
Fowler W. B.	12112	1333 2/3	E. R. Worthington			20							20	16	320	100			420	13		420						9				
Fowler David H.	99604	2000	M. Randa					6					6	15	90			90	3		90											
Fish H. J.	12289	1555 1/2	E. P. Scarboro			87							50	17	850			850	26		870							7				
Foreman John W. Sr.	10971	266 2/3	B. Manchester			62	50						94	50	18			1750	150		1850							9				
Foreman Minor L.	"	"	Do			35	13						50	19	950	125			1075	32		1090						9				
Same	"	"	Do			55							59	18	1060			1060	32		1050							9				
Foreman John W. Jr.	"	"	Do			43							50	17	850	100			950	29		970							9			
Foreman Francis J.	"	"	Do			16	66						16	66	14			235	7		240								9			
Foreman Albert W. Sr.	"	"	Do			45							50	18	900	100			1000	30		1020							9			
Foreman C. A.	"	"	Do			48							50	15	750	150			900	27		920							8			
Guller Polly Ann	9897	1000	Taylor Sayre			47	40						48	40	17			750	150		950								9			
Fout Wm. C.	12105	"	R. Dorsey			68	45						69	45	15			965	100	100	1165								14			
Fleck Wm. H. H.	7375	200	J. Kraut	Byhalia	50								18		15	100			115	3		120										
Faulby Jane	12112	1333 2/3	E. R. Worthington			19							19	15	285	100			385	12		390							6			
Field A. J.	7375	200	J. Kraut	Byhalia	135								1	25	50			50	2		50											
Fields C. L.	9918	666 2/3	J. Benwick			1							1	20	20			20			20											
Guy James & Robert	9918	666 2/3	J. Benwick			47							50	20	1000	100			1100	33		1110								20		
Guy Amanda	"	"	Do			18	12						30	20	600	125			725	22		730								16		
Gamble C. E.	"	"	Do			27	75						27	75	20			555	17		560									8		
Green Lydia F.	9894	1000	Swan & Taylor			30	25	25					55	25	16			885	26		900									8		
Green Ellis	"	"	Do			17	10						17	10	16			275	9		280									3		
Green Anna	"	"	Do			1							1	20	20	100			120	4		120										
Green Henry Shuman	"	"	Do			35	3	10					38	10	17			645	19		660										7	
Green Deborah S.	"	"	Do			60							100	16	1600			1600	49		1650											
Same	9893	528	Taylor			28	90	25					55	90	16			885	150		1040										18	
Gibson William	9895	1000	J. Wallaunt			81	16						101	16	17			1720	100	1820	55		1850								21	
Same	9894	"	Swan & Taylor			37							37	18	665	100			765	23		780									9	
Goff Emma	7375	200	J. Kraut	Byhalia	30								17		25	100			120	4		120										
Gibson James	9894	1000	Swan & Taylor			44	50						44	50	17			750	100		850										9	
Gray Joanna & Howard E.	9916	833	Dr. Darter			19	18	4		35			58	18	19			1105			1105											
Same	"	"	Do			5	38	6					11	38	17			190			200											
Same	"	"	Do			25	25	6					31	25	20			625	100	125	850											20
Same	10971	266 2/3	B. Manchester			16	75	16					32	75	19			620			620											5
Gray Josephine	"	"	Do			40		10					50	18	900	100			1000	30		1020										13
Grubbs Eva L.	9894	1000	Swan & Taylor			30		6	20				36	20	16			580	100		680											6
											1277 2/3 173 60 228		1497 61		29350 2700		325 32375															

In Whose Name Assessed.	No. of Entry.	Original Quantity.	DESCRIPTION OF PROPERTY.				No. of Acres of Land Classified.						Whole No. of Acres.	Value per Acre excluding Buildings.	Total Value of Lands, excluding Buildings.	Value of all Buildings.			Total Value of Lands and Buildings.	Amount Added or Deducted by Co. Board of Equalization.		Total Value as Equalized by Co. Board.	Amount Added or Deducted by State Board of Equalization.		Total Value as Equalized by State Board.	Page.	REMARKS.		
			Original Proprietor.	Unincorporated Towns.	Feet Front.	Arable and Plow Land.		Meadow and Pasture Land.		Uncultivat'd and Wood Land.		Houses.				Mills.	Other Buildings.	Dollars.		Dollars.	Dollars.		Dollars.	Dollars.				Dollars.	Dollars.
						Acres.	H.	Acres.	H.	Acres.	H.																		
<i>Geethy J. Shudds Jas B</i>	<i>9893</i>	<i>528</i>	<i>J. Taylor &c.</i>			<i>19</i>	<i>10</i>							<i>305</i>		<i>100</i>	<i>405</i>	<i>12</i>		<i>410</i>				<i>7</i>					
<i>Galentine Eliz Callahan</i>	<i>12112</i>	<i>1333 2/3</i>	<i>E. R. Washington</i>			<i>16</i>								<i>225</i>	<i>100</i>		<i>325</i>	<i>10</i>		<i>340</i>					<i>Alfred Litus</i>				
<i>Gamble John C</i>	<i>9917</i>													<i>20</i>															
<i>Godfrey Melissa</i>	<i>7375</i>	<i>200</i>	<i>S. Grant</i>	<i>Byhalia</i>	<i>100</i>		<i>55</i>							<i>35</i>	<i>25</i>	<i>150</i>	<i>175</i>	<i>5</i>		<i>180</i>					<i>John Harrison</i>				
<i>Same</i>	<i>"</i>	<i>"</i>	<i>Do</i>	<i>"</i>	<i>"</i>		<i>1</i>	<i>45</i>						<i>1</i>	<i>60</i>		<i>60</i>	<i>2</i>		<i>60</i>					<i>Same</i>				
<i>Same</i>	<i>"</i>	<i>"</i>	<i>Do</i>	<i>"</i>	<i>"</i>		<i>2</i>							<i>2</i>	<i>22 50</i>	<i>45</i>	<i>100</i>	<i>150</i>	<i>4</i>		<i>150</i>				<i>Rosa M. Linggell</i>				
<i>Haines, J. T.</i>	<i>7375</i>	<i>200</i>	<i>S. Grant</i>	<i>Byhalia</i>			<i>1</i>							<i>1</i>	<i>20</i>		<i>20</i>			<i>20</i>									
<i>Same</i>	<i>9916</i>	<i>830</i>	<i>W. Darke</i>				<i>17</i>	<i>75</i>		<i>4</i>				<i>21</i>	<i>75 17</i>		<i>370</i>	<i>11</i>		<i>370</i>									
<i>Same</i>	<i>9917</i>	<i>400</i>	<i>R. Madison</i>				<i>10</i>	<i>44 50</i>						<i>27</i>	<i>50 17</i>		<i>1035</i>	<i>31</i>		<i>1060</i>					<i>5</i>				
<i>Same</i>	<i>7375</i>	<i>200</i>	<i>S. Grant</i>	<i>Byhalia</i>	<i>249</i>		<i>1</i>	<i>85</i>						<i>1</i>	<i>85</i>	<i>150</i>	<i>100</i>	<i>300</i>	<i>9</i>		<i>310</i>								
<i>Same</i>	<i>13320</i>	<i>160</i>	<i>J. Evans</i>				<i>46</i>							<i>46</i>	<i>15</i>		<i>15</i>			<i>20</i>									
<i>Haines Alice</i>	<i>9916</i>	<i>833</i>	<i>W. Darke</i>				<i>77</i>	<i>50</i>	<i>5</i>	<i>3</i>				<i>85</i>	<i>50 13</i>	<i>100</i>	<i>1210</i>	<i>36</i>		<i>1250</i>									
<i>Hendricks John N.</i>	<i>9917</i>	<i>600</i>	<i>R. Madison</i>				<i>59</i>	<i>18</i>		<i>12</i>				<i>89</i>	<i>17</i>	<i>1515</i>	<i>100</i>	<i>125</i>	<i>1740</i>	<i>52</i>	<i>1770</i>				<i>26</i>				
<i>Hanneman John</i>	<i>9916</i>	<i>833</i>	<i>W. Darke</i>				<i>49</i>	<i>40</i>						<i>49</i>	<i>70 20</i>	<i>1035</i>	<i>200</i>	<i>100</i>	<i>1335</i>	<i>39</i>	<i>1320</i>				<i>18</i> <i>10th H. Hill St.</i>				
<i>Haines Cyrus N.</i>	<i>9917</i>	<i>400</i>	<i>R. Madison</i>				<i>14</i>	<i>40</i>		<i>5</i>				<i>19</i>	<i>40 17</i>	<i>370</i>	<i>125</i>	<i>445</i>	<i>15</i>	<i>500</i>					<i>10</i>				
<i>Haines James D</i>	<i>9917</i>	<i>"</i>	<i>Do</i>				<i>23</i>	<i>60</i>	<i>10</i>					<i>33</i>	<i>60 17</i>	<i>640</i>		<i>640</i>	<i>17</i>	<i>660</i>									
<i>Same</i>	<i>"</i>	<i>"</i>	<i>Do</i>						<i>12</i>					<i>12</i>	<i>21</i>	<i>250</i>		<i>250</i>	<i>8</i>	<i>340</i>						<i>16</i>			
<i>Same</i>	<i>9897</i>	<i>1000</i>	<i>Taylor &c.</i>				<i>140</i>	<i>50</i>	<i>20</i>	<i>75</i>				<i>235</i>	<i>50 20</i>	<i>4710</i>	<i>200</i>	<i>125</i>	<i>5385</i>	<i>151</i>	<i>5170</i>					<i>28</i>			
<i>Same</i>	<i>7375</i>	<i>200</i>	<i>S. Grant</i>				<i>16</i>							<i>16</i>	<i>20</i>	<i>320</i>		<i>320</i>	<i>10</i>	<i>320</i>						<i>10</i>			
<i>Hicks, Robert Sr.</i>	<i>9896</i>	<i>364</i>	<i>F. Scott</i>				<i>42</i>	<i>50</i>		<i>4</i>				<i>46</i>	<i>17</i>	<i>1825</i>	<i>100</i>	<i>100</i>	<i>2035</i>	<i>61</i>	<i>2150</i>					<i>38</i>			
<i>Hicks, Robert Jr.</i>	<i>9895</i>	<i>1000</i>	<i>J. Mallace &c.</i>											<i>50</i>													<i>10</i> <i>H. B. + J. M. Frederick</i>		
<i>Hicks Robert</i>	<i>"</i>	<i>"</i>	<i>Do</i>				<i>30</i>	<i>26</i>	<i>19</i>					<i>25</i>	<i>17</i>	<i>1435</i>	<i>175</i>	<i>150</i>	<i>1750</i>	<i>53</i>	<i>1790</i>					<i>Same</i>			
<i>Hicks George W. S.</i>	<i>9896</i>	<i>364</i>	<i>F. Scott</i>				<i>2</i>							<i>2</i>	<i>20</i>	<i>40</i>	<i>175</i>	<i>100</i>	<i>315</i>	<i>7</i>	<i>320</i>								
<i>Hicks Thomas</i>	<i>9895</i>	<i>1000</i>	<i>J. Mallace &c.</i>				<i>35</i>	<i>0</i>	<i>10</i>					<i>50</i>	<i>18</i>	<i>900</i>	<i>250</i>	<i>100</i>	<i>1250</i>	<i>51</i>	<i>1270</i>					<i>9</i> <i>20th Facy Hill 1370</i>			
<i>Hager Sarah</i>	<i>9960</i>	<i>2000</i>	<i>M. Randolph</i>				<i>32</i>			<i>8</i>				<i>40</i>	<i>17</i>	<i>760</i>	<i>100</i>		<i>860</i>	<i>26</i>	<i>870</i>					<i>10</i> <i>200-9th Hancock</i>			
<i>Hamilton, Wm. S.</i>	<i>9897</i>	<i>1000</i>	<i>Taylor &c.</i>				<i>50</i>							<i>50</i>	<i>18</i>	<i>900</i>	<i>100</i>	<i>1000</i>	<i>30</i>	<i>1020</i>						<i>9</i> <i>J. B. + D. E. Fisher</i>			
<i>Harriman George</i>	<i>"</i>	<i>"</i>	<i>Do</i>				<i>59</i>	<i>7</i>	<i>4</i>					<i>70</i>	<i>18</i>	<i>1260</i>	<i>100</i>	<i>100</i>	<i>1460</i>	<i>44</i>	<i>1420</i>					<i>18</i> <i>Wm + Anna Turner</i>			
<i>Haughen Samuel P</i>	<i>"</i>	<i>"</i>	<i>Do</i>				<i>48</i>		<i>2</i>					<i>50</i>	<i>16</i>	<i>800</i>	<i>175</i>		<i>975</i>	<i>29</i>	<i>1000</i>								
<i>Haines J. Avery</i>	<i>7375</i>	<i>200</i>	<i>S. Grant</i>				<i>12</i>							<i>12</i>	<i>21</i>	<i>250</i>		<i>250</i>	<i>8</i>	<i>250</i>						<i>5</i>			
<i>Harriman, John E.</i>	<i>9918</i>	<i>666 2/3</i>	<i>J. Berwick</i>				<i>15</i>	<i>69</i>	<i>6</i>					<i>90</i>	<i>16</i>	<i>1440</i>	<i>200</i>	<i>100</i>	<i>1740</i>	<i>52</i>	<i>1770</i>					<i>22</i>			
<i>Headington, L. H.</i>	<i>9895</i>	<i>1000</i>	<i>J. Mallace &c.</i>				<i>35</i>	<i>20</i>	<i>25</i>	<i>10</i>				<i>70</i>	<i>25 19</i>	<i>1335</i>	<i>200</i>		<i>1535</i>	<i>46</i>	<i>1570</i>					<i>15</i>			
<i>Halmes Nimrod</i>	<i>12289</i>	<i>1555 1/2</i>	<i>E. N. Scarborough</i>				<i>39</i>	<i>30</i>		<i>19</i>				<i>58</i>	<i>30 15</i>	<i>875</i>	<i>100</i>	<i>100</i>	<i>975</i>	<i>28</i>	<i>1000</i>								
<i>Hartley Jephtha</i>	<i>"</i>	<i>"</i>	<i>Do</i>				<i>36</i>	<i>20</i>	<i>14</i>					<i>70</i>	<i>17</i>	<i>1170</i>	<i>150</i>		<i>1340</i>	<i>40</i>	<i>1370</i>					<i>9</i>			
<i>Same</i>	<i>7375</i>	<i>200</i>	<i>S. Grant</i>	<i>Byhalia</i>	<i>50</i>		<i>20</i>							<i>20</i>		<i>20</i>		<i>200</i>	<i>228</i>	<i>7</i>	<i>230</i>								
<i>Hartley Frank A.</i>	<i>12289</i>	<i>1555 1/2</i>	<i>E. N. Scarborough</i>				<i>52</i>			<i>8</i>				<i>60</i>	<i>17</i>	<i>1020</i>			<i>1020</i>	<i>31</i>	<i>1140</i>					<i>9</i>			
<i>Hartley Lydia A</i>	<i>"</i>	<i>"</i>	<i>Do</i>				<i>8</i>	<i>25</i>	<i>21</i>					<i>24</i>	<i>25 15</i>	<i>315</i>			<i>315</i>	<i>35</i>	<i>370</i>					<i>4</i>			
<i>Same</i>	<i>"</i>	<i>"</i>	<i>Do</i>				<i>70</i>	<i>9</i>	<i>8</i>					<i>87</i>	<i>17</i>	<i>1480</i>			<i>1480</i>	<i>44</i>	<i>1520</i>					<i>8</i>			
<i>Hartley Amanda J</i>	<i>"</i>	<i>"</i>	<i>Do</i>				<i>23</i>	<i>8</i>						<i>31</i>	<i>17</i>	<i>525</i>			<i>525</i>	<i>16</i>	<i>520</i>					<i>22</i>			
<i>Same</i>	<i>12189</i>	<i>100</i>	<i>F. Pasley</i>				<i>31</i>		<i>2</i>					<i>33</i>	<i>17</i>	<i>560</i>	<i>200</i>		<i>760</i>	<i>23</i>	<i>770</i>					<i>9</i>			
<i>Hartley Lizzie</i>	<i>7375</i>	<i>200</i>	<i>S. Grant</i>	<i>Byhalia</i>	<i>48</i>		<i>15</i>							<i>15</i>		<i>25</i>	<i>150</i>	<i>100</i>	<i>275</i>	<i>7</i>	<i>270</i>								
<i>Harrigan Hannah A</i>	<i>12189</i>	<i>100</i>	<i>F. Pasley</i>				<i>14</i>							<i>14</i>	<i>17</i>	<i>240</i>	<i>150</i>	<i>125</i>	<i>515</i>	<i>15</i>	<i>510</i>					<i>17</i>			
<i>Harrigan Hannah H. C. S.</i>	<i>12289</i>	<i>1555 1/2</i>	<i>E. N. Scarborough</i>				<i>14</i>			<i>2</i>				<i>21</i>	<i>15</i>	<i>315</i>			<i>315</i>	<i>9</i>	<i>320</i>								
<i>Hufnagle James</i>	<i>10383</i>	<i>200</i>	<i>P. Davis</i>				<i>22</i>	<i>14</i>		<i>8</i>				<i>38</i>	<i>14 14</i>	<i>420</i>			<i>420</i>	<i>13</i>	<i>430</i>					<i>36</i> <i>14 acres</i>			
<i>Horn Jacob H.</i>	<i>10938</i>	<i>"</i>	<i>R. Davis</i>				<i>69</i>			<i>9</i>				<i>78</i>	<i>18</i>	<i>1450</i>	<i>200</i>	<i>100</i>	<i>1750</i>	<i>51</i>	<i>1750</i>					<i>9</i>			
<i>Same</i>	<i>"</i>	<i>"</i>	<i>Do</i>				<i>76</i>							<i>76</i>	<i>18</i>	<i>1370</i>			<i>1370</i>	<i>40</i>	<i>1400</i>					<i>9</i>			
						<i>126</i>	<i>15</i>	<i>323</i>	<i>76</i>	<i>258</i>				<i>1847</i>	<i>70</i>	<i>32795</i>	<i>3550</i>	<i>1425</i>	<i>38270</i>										

In Whose Name Assessed.	No. of Entry.	Original Quantity.	Original Proprietor.	Unincorporated Towns.	Feet Front.	No. of Acres of Land Classified.			Whole No. of Acres.	Value per Acre excluding Buildings.	Total Value of Lands, excluding Buildings.	Value of all Buildings.			Total Value of Lands and Buildings.	Amount Added or Deducted by Co. Board of Equalization.		Total Value as Equalized by Co. Board.	Amount Added or Deducted by State Board of Equalization.		Total Value as Equalized by State Board.	Page.	REMARKS.	
						Arable and Plow Land.	Meadow and Pasture Land.	Uncultivat'd and Wood Land.				Houses.	Mills.	Other Buildings.		Added Dollars.	Deducted Dollars.		Added Dollars.	Deducted Dollars.				
																								Dollars.
<i>Haines Harvey M</i>	<i>9896</i>	<i>564</i>	<i>F. Scott</i>	<i>Byhalia</i>		<i>26</i>			<i>26</i>	<i>10</i>	<i>10</i>			<i>10</i>			<i>10</i>							
<i>Same</i>	<i>"</i>	<i>"</i>	<i>Do</i>			<i>23 44</i>			<i>23 44</i>	<i>19</i>	<i>445</i>	<i>100</i>		<i>545</i>	<i>16</i>		<i>550</i>				<i>10</i>			
<i>Same</i>	<i>13320</i>	<i>160</i>	<i>J Evans</i>			<i>22 90</i>			<i>22 90</i>	<i>19</i>	<i>435</i>			<i>435</i>	<i>13</i>		<i>450</i>							
<i>Hasley J D</i>	<i>12289</i>	<i>1555 1/2</i>	<i>E. R. P. Scarborough</i>					<i>1 03</i>	<i>1 03</i>	<i>19</i>	<i>20</i>	<i>100</i>	<i>100</i>	<i>220</i>	<i>7</i>		<i>220</i>							
<i>Hicks L H & Addie</i>	<i>13320</i>	<i>160</i>	<i>J Evans</i>			<i>1 66</i>	<i>12</i>		<i>13 66</i>	<i>17</i>	<i>230</i>			<i>230</i>	<i>7</i>		<i>240</i>							
<i>Humbach Eliza</i>	<i>12289</i>	<i>1555 1/2</i>	<i>E. R. P. Scarborough</i>			<i>63 50</i>		<i>20</i>	<i>83 50</i>	<i>15</i>	<i>1255</i>			<i>1255</i>	<i>31</i>		<i>1290</i>							
<i>Same</i>	<i>"</i>	<i>"</i>	<i>Do</i>			<i>20</i>	<i>20</i>	<i>10</i>	<i>50</i>	<i>15</i>	<i>750</i>			<i>750</i>	<i>23</i>		<i>760</i>					<i>15</i>		
<i>Same</i>	<i>10177</i>	<i>122</i>	<i>R. J. Williams</i>			<i>16 50</i>			<i>16 50</i>	<i>16</i>	<i>265</i>			<i>265</i>	<i>8</i>		<i>260</i>					<i>15</i>		
<i>Same</i>	<i>"</i>	<i>"</i>	<i>Do</i>			<i>40</i>	<i>10</i>		<i>50</i>	<i>16</i>	<i>800</i>	<i>300</i>		<i>1100</i>	<i>33</i>		<i>1120</i>					<i>16</i>		
<i>Haines Pearl</i>	<i>9895</i>	<i>1000</i>	<i>J. Wallace</i>			<i>15</i>			<i>15</i>	<i>15</i>	<i>240</i>			<i>240</i>	<i>7</i>		<i>220</i>					<i>8</i>		
<i>Hicks John L</i>	<i>9916</i>	<i>833</i>	<i>W. Darke</i>			<i>2 50</i>			<i>2 50</i>	<i>20</i>	<i>50</i>	<i>200</i>		<i>250</i>	<i>8</i>		<i>260</i>						<i>D. M. Worthington</i>	
<i>Hicks John Tracy</i>	<i>10971</i>	<i>266 2/3</i>	<i>S. W. Manchester</i>			<i>28 50</i>			<i>28 50</i>	<i>16</i>	<i>455</i>			<i>455</i>	<i>14</i>		<i>470</i>							
<i>Hicks Margant</i>	<i>10971</i>	<i>"</i>	<i>Do</i>			<i>14</i>		<i>12</i>	<i>26</i>	<i>16</i>	<i>415</i>			<i>415</i>	<i>12</i>		<i>430</i>							
<i>Harriman Nancy</i>	<i>12289</i>	<i>1555 1/2</i>	<i>E. R. P. Scarborough</i>			<i>31</i>	<i>5</i>	<i>2</i>	<i>38</i>	<i>17</i>	<i>635</i>			<i>635</i>	<i>19</i>		<i>640</i>					<i>17</i>	<i>Frank Jones</i>	
<i>Harris G & Jessie</i>	<i>9916</i>	<i>833</i>	<i>W. Darke</i>			<i>14 75</i>		<i>18</i>	<i>32 75</i>	<i>14</i>	<i>460</i>			<i>460</i>	<i>14</i>		<i>470</i>						<i>John Harriman</i>	
<i>Hager F S</i>	<i>10971</i>	<i>266 2/3</i>	<i>S. W. Manchester</i>			<i>5</i>		<i>8</i>	<i>42</i>	<i>13</i>	<i>545</i>	<i>100</i>		<i>645</i>	<i>14</i>		<i>660</i>							
<i>Hoover H. E.</i>	<i>12360</i>					<i>2</i>			<i>2</i>	<i>15</i>	<i>30</i>			<i>30</i>			<i>30</i>							
<i>Loaf Lodge # 720</i>	<i>7375</i>	<i>200</i>	<i>S. Grant</i>	<i>Byhalia</i>		<i>02</i>			<i>02</i>		<i>10</i>	<i>300</i>		<i>310</i>	<i>9</i>		<i>320</i>							
<i>Lues Caleb</i>	<i>12289</i>	<i>1555 1/2</i>	<i>E. R. P. Scarborough</i>					<i>162 25</i>	<i>162 25</i>	<i>12</i>	<i>1450</i>			<i>1450</i>	<i>39</i>		<i>1460</i>					<i>54</i>		
<i>Same</i>	<i>10177</i>	<i>522</i>	<i>A. J. Williams</i>			<i>300</i>		<i>223</i>	<i>523</i>	<i>14</i>	<i>7320</i>	<i>100</i>	<i>200</i>	<i>7620</i>	<i>229</i>		<i>7710</i>					<i>124</i>		
<i>Jennings Mr M Williams</i>	<i>10971</i>	<i>266 2/3</i>	<i>S. W. Manchester</i>			<i>22</i>		<i>28</i>	<i>50</i>	<i>18</i>	<i>900</i>			<i>900</i>	<i>27</i>		<i>930</i>							
<i>Johnston Susan M</i>	<i>9917</i>	<i>600</i>	<i>R. Madison</i>			<i>26</i>			<i>26</i>	<i>19</i>	<i>495</i>	<i>100</i>		<i>595</i>	<i>18</i>		<i>600</i>					<i>15</i>		
<i>Jones Paul</i>	<i>12289</i>	<i>1555 1/2</i>	<i>E. R. P. Scarborough</i>			<i>33</i>	<i>21</i>	<i>6</i>	<i>60</i>	<i>17</i>	<i>1120</i>	<i>100</i>		<i>1120</i>	<i>34</i>		<i>1140</i>					<i>19</i>		
<i>Johnston John B</i>	<i>9896</i>	<i>324</i>	<i>F. Scott</i>	<i>Byhalia</i>		<i>31</i>	<i>5</i>	<i>23</i>	<i>36 28</i>	<i>18</i>	<i>650</i>			<i>650</i>	<i>20</i>		<i>660</i>					<i>15</i>		
<i>Johnston Clara V</i>	<i>"</i>	<i>"</i>	<i>Do</i>			<i>40 46</i>			<i>40 46</i>	<i>18</i>	<i>735</i>			<i>735</i>	<i>22</i>		<i>730</i>					<i>22</i>		
<i>Jones, W. Guy (Tax)</i>	<i>9917</i>	<i>600</i>	<i>R. Madison</i>			<i>74</i>		<i>6</i>	<i>100</i>	<i>13</i>	<i>1300</i>			<i>1300</i>	<i>39</i>		<i>1320</i>					<i>22</i>	<i>H. E. Whiffle</i>	
<i>Kroushoff John B</i>	<i>9895</i>	<i>1000</i>	<i>J. Wallace et al</i>			<i>43 70</i>	<i>30</i>		<i>73 70</i>	<i>14</i>	<i>1340</i>	<i>150</i>	<i>200</i>	<i>1740</i>	<i>52</i>		<i>1780</i>					<i>17</i>		
<i>Same</i>	<i>"</i>	<i>"</i>	<i>Do</i>			<i>58 86</i>	<i>3</i>	<i>30</i>	<i>88 86</i>	<i>20</i>	<i>1775</i>			<i>1775</i>	<i>58</i>		<i>1780</i>					<i>44</i>		
<i>Kavanaugh Nathan</i>	<i>12105</i>	<i>"</i>	<i>R. Doring</i>			<i>36 20</i>		<i>4</i>	<i>40 20</i>	<i>16</i>	<i>645</i>			<i>645</i>	<i>19</i>		<i>660</i>					<i>5</i>		
<i>Kavanaugh Geo. W.</i>	<i>"</i>	<i>"</i>	<i>Do</i>			<i>34 60</i>			<i>34 50</i>	<i>16</i>	<i>550</i>	<i>100</i>	<i>100</i>	<i>700</i>	<i>23</i>		<i>770</i>					<i>6</i>		
<i>Kirkpatrick Mary J</i>	<i>9893</i>	<i>528</i>	<i>J. Taylorson</i>			<i>20</i>			<i>20</i>	<i>15</i>	<i>300</i>			<i>300</i>	<i>9</i>		<i>310</i>					<i>3</i>		
<i>Same</i>	<i>"</i>	<i>"</i>	<i>Do</i>			<i>18</i>			<i>18</i>	<i>15</i>	<i>270</i>	<i>100</i>		<i>370</i>	<i>11</i>		<i>370</i>					<i>15</i>		
<i>Langhury Harrison</i>	<i>12360</i>	<i>916 1/2</i>	<i>J. Treacle</i>			<i>64 04</i>		<i>7</i>	<i>71 04</i>	<i>13</i>	<i>925</i>			<i>925</i>	<i>28</i>		<i>950</i>							
<i>Same</i>	<i>7375</i>	<i>200</i>	<i>S. Grant</i>	<i>Byhalia</i>	<i>124</i>	<i>50</i>			<i>50</i>		<i>30</i>	<i>200</i>		<i>230</i>	<i>7</i>		<i>240</i>						<i>J. S. Haines</i>	
<i>Langhury Garrison</i>	<i>9918</i>	<i>666 2/3</i>	<i>J. Bennick</i>			<i>18</i>	<i>37</i>	<i>50</i>	<i>55 50</i>	<i>17</i>	<i>945</i>	<i>400</i>	<i>100</i>	<i>1445</i>	<i>48</i>		<i>1460</i>					<i>31</i>		
<i>Langhury Elzey</i>	<i>12289</i>	<i>1555 1/2</i>	<i>E. R. P. Scarborough</i>			<i>30</i>		<i>10</i>	<i>40</i>	<i>17</i>	<i>680</i>			<i>680</i>	<i>20</i>		<i>690</i>					<i>7</i>		
<i>Langhury Vista J</i>	<i>"</i>	<i>"</i>	<i>Do</i>			<i>30 50</i>	<i>18</i>	<i>15</i>	<i>63 50</i>	<i>17</i>	<i>1080</i>	<i>100</i>		<i>1180</i>	<i>35</i>		<i>1210</i>					<i>9</i>		
<i>Lewis Amanda J</i>	<i>"</i>	<i>"</i>	<i>Do</i>			<i>9</i>			<i>9</i>	<i>16</i>	<i>145</i>			<i>145</i>	<i>4</i>		<i>150</i>					<i>4</i>		
<i>Lary Rhoda</i>	<i>12112</i>	<i>1333 1/3</i>	<i>E. R. Worthington</i>			<i>6</i>			<i>6</i>	<i>15</i>	<i>90</i>	<i>125</i>		<i>215</i>	<i>6</i>		<i>220</i>							
						<i>1216 78 108 73 59 28</i>				<i>1466 74</i>	<i>30225</i>	<i>2175</i>	<i>800</i>	<i>33200</i>	<i>310</i>									

In Whose Name Assessed.	No. of Entry.	Original Quantity.	Original Proprietor.	Unincorporated Towns.	Feet Front.	No. of Acres of Land Classified.					Whole No. of Acres.	Value per Acre excluding Buildings.			Value of all Buildings.			Total Value of Lands and Buildings.	Amount Added or Deducted by Co. Board of Equalization.		Total Value as Equalized by Co. Board.	Amount Added or Deducted by State Board of Equalization.		Total Value as Equalized by State Board.	Page.	REMARKS.
						Arable and Plow Land.		Meadow and Pasture Land.		Uncultivat'd and Wood Land.		Houses.	Mills.	Other Buildings.	Added Dollars.	Deducted Dollars.	Added Dollars.		Deducted Dollars.							
						Acres.	H.	Acres.	H.	Acres.										Dollars.		Dollars.	Dollars.			
Laurance Williams	9960	2000	M. Randolph			75				75	18	1350	120	400	1870	56		1880					50			
Same	"	"	"			110			141	257	14	3515			3515	105		3620								
Same	"	"	"			1	25			1	25	20			20			20								
Same	"	"	"			1				1		15			15			20								
Same	12360	916 1/2	J. Treacle						60	60	144	840			840	25		870								
Same	13748	260	C. Wallace			152		100	60	362	14	3670			3670	110		3780						18		
Lingel, Harry C.	9896	464	Scott & Citypatrick	Byhalia		12		23	30	33	30	20	00	705	100	100	905	27		920				10		
Same	9897	815	Taylor Sayre & Co.			18		22		40	18	720			720	22		720						18		
Lingel, John H.	7375	200	J. Krant	Byhalia		58	25	15	5	78	25	21	1645	200		1845	55		1870					30		
Lingel, Martha J.	"	"	"	"	39	4	05			4	05	22	90	200		290	9		300							
Lingel, John H.	"	"	"	"	72		16				16		25		125	150	5		160							
Lingel, Newton H.	"	"	"	"	28		20				20		25			25		30								
Lingel, Ida R. (Fox)	"	"	"	"			25				25		20			20		20								
Same	"	"	"	"	66		25				25		20			20		20								
Lilly, Sier	9918	666 2/3	J. Bernick			28				28	19	530	100		630	19		630						15		
Loughery, Perry	12289	1555 1/2	E. R. P. Scarbro			21			20	40	15	600			600	15		600						18		
Loughery, Jas. W.	"	"	"			7				7	15	60			60	2		60								
M. Peck, Geo. M.	10938	200	R. Dugan			66		12	50	28		228	50	20	4470			4470	134		4490			110		
McCall, Thomas F.	99604	2000	M. Randolph			49		10		59	19	1120	100	100	1320	40		1330						33		
McBride, Napoleon	13748	260	C. Wallace			40		30		70	14	1050			1050	32		1040						42		
Same	1236	916 1/2	J. Treacle			46	90	30		76	90	14	1075	100		1175	35		1190					20		
Middleworth, Andrew	9895	1000	J. Wallace			78	60		35	113	50	17	1930	350	150	2430	73		2490					17		
Middleworth, Joseph F.	7375	200	J. Krant	Byhalia	64		25				25		20	100		120	4		120							
Middleworth, Anthony	9896	364	F. Scott			8				8	19	150			150	5		160								
Middleworth, E. C.	9895	1000	J. Wallace			10				10	18	180			180	6		180						9		
Moore, Jesse et al	10971	2666 2/3	E. Omichest			69	50		30	99	50	16	1090	100	1190	251		1720						20		
Macomber, William	10938	200	R. Davis			42		8		50	16	800	100		900	27		930								
Same	"	"	"			2	16			2	16	40			40	1		40								
Morrow, Elizabeth	12112	1333 1/3	H. R. Worthington			57	50		20	77	50	16	1240			1240	38		1260					16		
Martin, Robert	"	"	"			1				1	20	20			20			20								
Mayberry, Cordelia	"	"	"			40	25	8	7	50	25	16	805	100		905	27		920					44		
Miller, Thomas	9917	600	R. Madison			22	50		10	32	50	15	490			490	15		510							
Miller, David E.	"	"	"			2	50		8	60	18	1080	250		1330	40		1350						23		
Same	"	"	"			7	35			7	25	16	1140			1140	34		1170							
Same	9916	833	W. Darke			4	75	20	4	28	75	17	490			490	15		510							
Moodie, Robert Sr.	9897	815	Taylor Sayre & Co.			39			1	41	16	640	100		740	22		730						28		
Same	"	"	"			17			3	20	60	14	290			290	5		300							
Moodie, Jane	"	"	"			3			1	4	19	75	100		175	5		150								
Morris, W. A.	7375	200	J. Krant	Byhalia	127		25			25		25			25			30								
Muffitt, Elizabeth	"	"	"	"	40		25			25		25	125		150	5		160								
Muffitt, William	9896	364	F. Scott	"	208		3			5	25	75			75	2		80								
Same	7375	200	J. Krant	"	155		15	15		15		30	100	150	280	5		290						Should be Geo Miller		
Same	"	"	"	"	120		3	50		120	50	85			85	3		90								
Same	9916	833	W. Darke			43				43	20	860	100	100	1060	32		1070						15		
						1140	40	460	80	433	60	2034	90	336	15	2350	1225	37	220							

In Whose Name Assessed.	No. of Entry.	DESCRIPTION OF PROPERTY.				No. of Acres of Land Classified.						Whole No. of Acres.	Value per Acre excluding Buildings.	Total Value of Lands, excluding Buildings.	Value of all Buildings.			Total Value of Lands and Buildings.	Amount Added or Deducted by Co. Board of Equalization.		Total Value as Equalized by Co. Board.	Amount Added or Deducted by State Board of Equalization.		Total Value as Equalized by State Board.	Page.	REMARKS.			
		Original Quantity.	Original Proprietor.	Unincorporated Towns.	Feet Front.	Arable and Plow Land.		Meadow and Pasture Land.	Uncultivat'd and Wood Land.		Houses.				Mills.	Other Buildings.	Dollars.		Dollars.	Dollars.		Dollars.	Dollars.				Dollars.	Dollars.	Dollars.
						Acres.	H.		Acres.	H.																			
Stephensons, Eliza	12112	1333 1/3	E.R. Worthington		86	75	15					101	75	16	1605	100		1715	59			1770							
Liney Jacob et al	12289	555 1/2	E.N.P. Scarboro		37							40		16	640			640	19			660							
Same	"	"	Do		18	40	5					28	70	15	350			350	11			360				4			
Strahan, Cora A	13427	89	J. Wallingford		19							20		15	300	100		400	12			410				6			
Spring, Owen	7375	200	J. Krant	Byhalia	50		25					25			20			20				20							
Sewell, Calvin C	9895	1000	J. Wallau		38							40		16	640	100		740	22			740				24			
Sewell, C.B. (Tax)	7375	200	J. Krant	Byhalia	700		1	52				1	32		25	100		125	4			130				8 Logan Hds.			
Same	"	"	Do		1	38						1	38		30			30	1			40							
Sewell, Fannie O	10971	266 2/3	S. Winchester		"							21		15	315			315	9			320				7			
Sharp, Amos W	"	"	Do		44							49		12	635			635	14			650				9			
Stahl, Blanche Jessie	"	"	Do		31	33						33	33	16	530			530	16			540				8			
Sullivan, Jno W & Lewis M	"	"	Do		41	75						50	75	16	810	100	100	1010	30			1110				28			
Stahl, Jno	"	"	Do		34							40		16	640		100	740	22			750				8			
Switzer, John W & Veturia Jones	12360	916 1/2	J.D. Treacle		50							63		12	750			750	23			760				18			
Sewell, Frank A.	7375	200	J. Krant	Byhalia	58		55					25			25	100		125	3			130							
State																													
Safe, Henry	12289	1555 1/2	E.N.P. Scarboro	(Refer to J.D. Hosler)								X															Scrap this lot		
Whitney, E. D. Hosler	12360	916 1/2	J.D. Treacle									X																	
Suzanna, Tallman	7375	200	J. Krant	Byhalia								62																	
L.O. Beun	7375	"	Do	Do	82	50		33				33			25			25				30							
W.M. Harris	9896	1000	J. Fitzpatrick					75				75			15			15				20							
Temple, Jacob	9918	666 2/3	J. Berwick		50							50		19	950			950	29			980					J.A. Temple et al		
Same	12289	1555 1/2	E.N.P. Scarboro		29	75		6				35	75	16	570			570	17			580					J.W. Longberry		
Same	9918	666 2/3	J. Berwick		23	15		14				23	15	14	440			440	13			450					J.A. Temple, et al		
Thornton, Dudley E.	13320	160	J. Evans		56	50		16				56	50	16	905			905	27			930							
Same	9916	833	W. Darke		18	75		16				18	75	16	300	100	100	500	15			510					4		
Thornton, Nelson	9895	1000	J. Wallau		20	50		11				31	50	16	505			505	15			520					4		
Same	9916	833	W. Darke		18							18		17	305	100	100	505	15			510					8		
Same	13320	160	J. Evans		7							7		15	105			105	3			110							
Temple, Geo W	9917	400	R. Madison		65	50		27	25			117	50	14	1645			1645	49			1690							
Tussing, David	9895	1000	J. Wallace or		45	50		6	20			71	50	17	1215		125	1340	40			1360					17		
Thornton, Emeline	7375	200	J. Krant	Byhalia	78			25				35			25	100		125	4			130							
Temple, S M	12289	1555 1/2	E.N.P. Scarboro		25	25						35	25	17	600	100		700	21			710					12		
Temple, Lewis & Blanche	9916	833	W. Darke		99							100		18	1800		100	1900	57			1940					20		
Temple, Anna	9960	2000	M. Rudolph.		8							8		20	160	100	100	360	11			370					Chris Smally		
Temple, W & George	9918	666 2/3	J. Berwick		46							46		20	920			920	28			940					10		
Temple, Marion	7375	200	J. Krant					11						19	25		275	300	4			310							
Titas, Alfred	12112	1333 1/3	E.R. Worthington		35			5				40		16	640			640	19			650					8		
Temple, Marion	9917	600	R. Madison		13		2	5				20		17	340	100		440	18			450					4 H. Chambers		
					997 00 55 114						1166 05						18830 1200						1000 21030 ✓						

In Whose Name Assessed.	No. of Entry.	DESCRIPTION OF PROPERTY.			No. of Acres of Land Classified.			Feet Front.	Whole No. of Acres.	Value per Acre excluding Buildings.	Total Value of Lands, excluding Buildings.	Value of all Buildings.			Total Value of Lands and Buildings.	Amount Added or Deducted by Co. Board of Equalization.		Total Value as Equalized by Co. Board.	Amount Added or Deducted by State Board of Equalization.		Total Value as Equalized by State Board.	Page.	REMARKS.		
		Original Quantity.	Original Proprietor.	Unincorporated Towns.	Arable and Plow Land.							Meadow and Pasture Land.	Uncultivat'd and Wood Land.	Houses.		Mills.	Other Buildings.		Added Dollars.	Deducted Dollars.				Added Dollars.	Deducted Dollars.
					Acres.	H.	Acres.																		
<i>Vaubushark D</i>	<i>12289</i>	<i>55 1/2</i>	<i>E. P. Scarboro</i>																						
<i>Vauausdale Wm M</i>	<i>9917</i>	<i>600</i>	<i>R. Madison</i>																						
<i>Vauausdale Margret</i>	<i>7375</i>	<i>200</i>	<i>S. Grant</i>																						
<i>Vauausdale E. N.</i>	<i>9896</i>	<i>364</i>	<i>T. Scott</i>																						
<i>Wright Charles</i>	<i>7375</i>	<i>200</i>	<i>S. Grant</i>	<i>Byhalia</i>	<i>50</i>																				
<i>Wheeler D. P.</i>	<i>12360</i>	<i>91 1/2</i>	<i>J. J. Treacle</i>																						
<i>Wilcox James F.</i>	<i>12112</i>	<i>133 3/3</i>	<i>E. R. Worthington</i>																						
<i>Williams J. H.</i>	<i>9917</i>	<i>600</i>	<i>R. Madison</i>																						
<i>Williams Geo. R.</i>	<i>9897</i>	<i>500</i>	<i>Swan & Taylor</i>																						
<i>Same</i>	<i>9893</i>	<i>528</i>	<i>J. Taylor & Co.</i>																						
<i>Williams Lemuel</i>	<i>9960</i>	<i>2000</i>	<i>M. Rudolph</i>																						
<i>Williams Obadiah</i>	"	"	<i>Do</i>																						
<i>Williams Thomas C.</i>	"	"	<i>Do</i>																						
<i>Same</i>	"	"	<i>Do</i>																						
<i>Witteraft W. J.</i>	"	"	<i>Do</i>																						
<i>Williams Wm E.</i>	<i>12112</i>	<i>133 3/3</i>	<i>E. R. Worthington</i>																						
<i>Williams Chas E.</i>	<i>12105</i>	<i>1000</i>	<i>R. Dorsey</i>																						
<i>Williams Chas E.</i>	<i>9960</i>	<i>2000</i>	<i>M. Rudolph</i>																						
<i>Wallace John</i>	<i>9894</i>	<i>1000</i>	<i>Swan & Taylor</i>																						
<i>Wright Levin W.</i>	<i>9897</i>	<i>815</i>	<i>Taylor & Co.</i>																						
<i>Wright Sarah</i>	<i>9897</i>	"	<i>Do</i>																						
<i>Webb A. H.</i>	<i>14639</i>	<i>130</i>	<i>R. Latham</i>																						
<i>Webster L. C.</i>	<i>10971</i>	<i>2666 2/3</i>	<i>B. W. Winchester</i>																						
<i>Wellwood William</i>	"	"	<i>Do</i>																						
<i>Same</i>	<i>12105</i>	<i>1000</i>	<i>R. Dorsey</i>																						
<i>Same</i>	<i>12112</i>	<i>1333 1/3</i>	<i>E. R. Worthington</i>																						
<i>Wilson Wm</i>	<i>12105</i>	<i>1000</i>	<i>R. Dorsey</i>																						
<i>Wilson Mary A.</i>	"	"	<i>Do</i>																						
<i>Same</i>	"	"	<i>Do</i>																						
<i>Wilson James L.</i>	<i>9893</i>	<i>528</i>	<i>Randall & Taylor</i>																						
<i>Wilson Susannah</i>	"	"	<i>Do</i>																						
<i>Wagner John</i>	<i>12360</i>	<i>91 1/2</i>	<i>J. J. Treacle</i>																						
<i>Wagle Anna W.</i>	<i>7375</i>	<i>200</i>	<i>S. Grant</i>	<i>Byhalia</i>																					
<i>Wagle Anna</i>	"	"	<i>Do</i>	"																					
<i>Woodland Jasper</i>	"	"	<i>Do</i>	"																					
<i>Woodland Jasper H.</i>	"	"	<i>Do</i>	"	<i>75</i>																				
<i>Woodland Elizabeth</i>	"	"	<i>Do</i>	"																					
<i>Wright Charley</i>	<i>7375</i>	"	<i>Do</i>	"																					
<i>Wood Emma Letitia</i>	"	"	<i>Do</i>	"	<i>68</i>																				
<i>Wagle Hannah M.</i>	<i>9916</i>	<i>833</i>	<i>Dr. Darke</i>																						
<i>Williams Mattie</i>	"	"	<i>Do</i>																						
<i>Wagle Mary</i>	<i>7375</i>	<i>200</i>	<i>S. Grant</i>	<i>Byhalia</i>																					
<i>Wright S. C.</i>	<i>12112</i>	<i>1333 1/3</i>	<i>E. R. Worthington</i>																						
<i>Williams W. C.</i>	<i>12289</i>	<i>55 1/2</i>	<i>E. P. Scarboro</i>																						
					<i>12996 1/20</i>			<i>418</i>				<i>1837 06</i>	<i>302 1/2</i>	<i>2050</i>	<i>925</i>	<i>33 2/3</i>			<i>331 66</i>						

WASHINGTON
UNION COUNTY
1900