

**LIBERTY TP.
UNION COUNTY
1900**

APPRAISER'S OATH.

The State of Ohio, Union County, ss.

I, Stewart J. Green Land Appraiser for

Liberty Township, in the County of Union, and State of Ohio, do solemnly swear

that the return to which this is attached contains a correct description of each parcel of Real Property, within said district, as far as I have been able to ascertain the same, and that the value attached to each parcel in said return is, as I verily believe, the full value thereof. Estimated agreeably to the rules prescribed therefor in the act for levying taxes on all property of this State, according to its true value.

Signed, D. B. Edwards
Appraiser of said Township.

Sworn and subscribed to before me, the undersigned authority, this
day of _____ A. D. 1900.

Signed, D. B. Edwards
Auditor of said County.

TREAS

Empl	
2	day
5	
6	day
7	
8	day
9	
10	day
11	
12	day
13	
14	day
15	
16	day
17	
18	day
19	
20	day
21	
22	day
23	
26	day
27	
2	day
3	
4	day
5	
16	day
17	
18	day
19	
21	day
23	
30	day
1	day
2	
3	day
4	
5	day
7	
8	day

On _____
in full of t.
\$ 41⁰⁰

17
7
76

APPRAISER'S ACCOUNT.

TREASURY OF UNION COUNTY.

To Stewart F. Green Land Appraiser of Liberty Township, Dr.

THE DATE OF EACH DAY			
Employed in making said Appraisement, was as follows:			
2	day of	March	12 day of May
5	day of	"	14 day of "
6	day of	"	17 day of "
7	day of	"	18 day of "
8	day of	"	19 day of "
9	day of	"	21 day of "
10	day of	"	25 day of "
12	day of	"	28 day of "
13	day of	"	29 day of "
14	day of	"	30 day of June
15	day of	"	1 day of "
16	day of	"	2 day of "
17	day of	"	3 day of "
19	day of	"	11 day of "
20	day of	"	12 day of "
21	day of	"	14 day of "
22	day of	"	15 day of "
23	day of	"	16 day of "
26	day of	"	18 day of "
27	day of	"	19 day of "
28	day of	April	20 day of "
3	day of	"	22 day of "
4	day of	"	23 day of "
5	day of	"	24 day of "
6	day of	"	26 day of "
16	day of	"	27 day of "
17	day of	"	28 day of "
18	day of	"	29 day of "
19	day of	"	30 day of "
21	day of	"	1 day of "
23	day of	"	3 day of "
30	day of	"	10 day of "
1	day of	May	11 day of "
2	day of	"	12 day of "
3	day of	"	13 day of "
4	day of	"	14 day of "
7	day of	"	17 day of "
8	day of	"	18 day of "

For services rendered in appraising the Real Estate of said Township, for the year 1900, occupying 70 days, between the 2nd day of March and the 30th day of June at \$2⁰⁰ per day \$140⁰⁰

And the said Stewart F. Green being duly sworn, solemnly declares that the number of days herein stated, were necessarily occupied in the appraisement of said Township, and that this account is in all respects just and true.

(Signed) S. F. Green Appraiser.

Sworn to and subscribed before me, this 17th day of

Aug. 1900.
(Signed) D. B. Edwards Deputy Auditor of said County.

Received, Aug 17th 1900, of the Auditor of Union County, an order on the Treasurer of said County, for One Hundred Forty-four Dollars, Cents,

in full of the above account.

\$141⁰⁰

Postage \$1.00

(Signed) S. F. Green Appraiser.

Paid \$75⁰⁰ 6/30/1900.
" 66⁰⁰ 7/17/1900.

141.
75.
66.

OFFICIAL STATEMENT OF SURVEYS.

No. of Original Survey.	Original Quantity.	Original Proprietors.	Water Course.	Page.
3443	1000	David Duncan	Mill creek	5
3444	1000	David Duncan	Mill creek	5
3462	666	John Scarborough	Mill creek	4
3462	150	Duncan M ^{rs} Arthur	Mill creek	4
3480	700	Samuel Bayly	Mill creek	6
3487	400	William Dangerfield	Mill creek	10
3487	200	Joel Jones	Darby creek	10
3487	191	Thompson Davis	Mill creek	10
3490	100	William Ritchie	Darby creek	11
3490	100	John Hopwood	Darby creek	11
3689	600	Jacob Woolston	Mill creek	3
4404	1333 $\frac{1}{3}$	Benjamin Grimes	Mill creek	2
4404	1333 $\frac{1}{3}$	Benjamin Grimes.	Mill creek	2
4815	1380	Lewelling Jones (Kip's)	Mill creek	7
4933	500	Thomas Sears.	Darby creek	11
5092	1333 $\frac{1}{3}$	Robert Means.	Mill creek	7
✓ 5267	100	George Solonson	Darby creek	10
✓ 5267	100	James Baldwin	Mill creek	10
✓ 5267	100	Bryan Simmons.	Darby creek	10
✓ 5270	200	William Russell	Darby creek	11
✓ 5270	100	George Winter	Darby creek	11
✓ 5729	1000	Robert Means.	Mill creek	2
5777	300	Robert Means.	Mill creek	3
5778-5641-5806+6495	1828 $\frac{2}{3}$	Robert Means.	Mill creek	3
6232	400	Tuttle Hudson.	Otter creek	8

No.

65

1238

12399-

12427

12400

✓ 1239

✓

WE

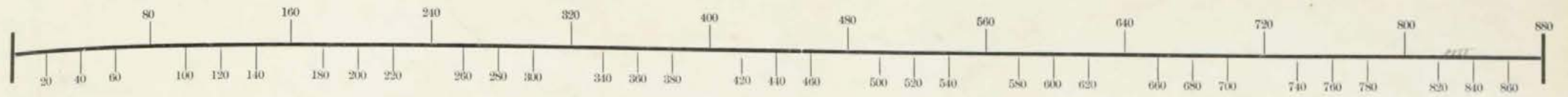
Courses

Lands

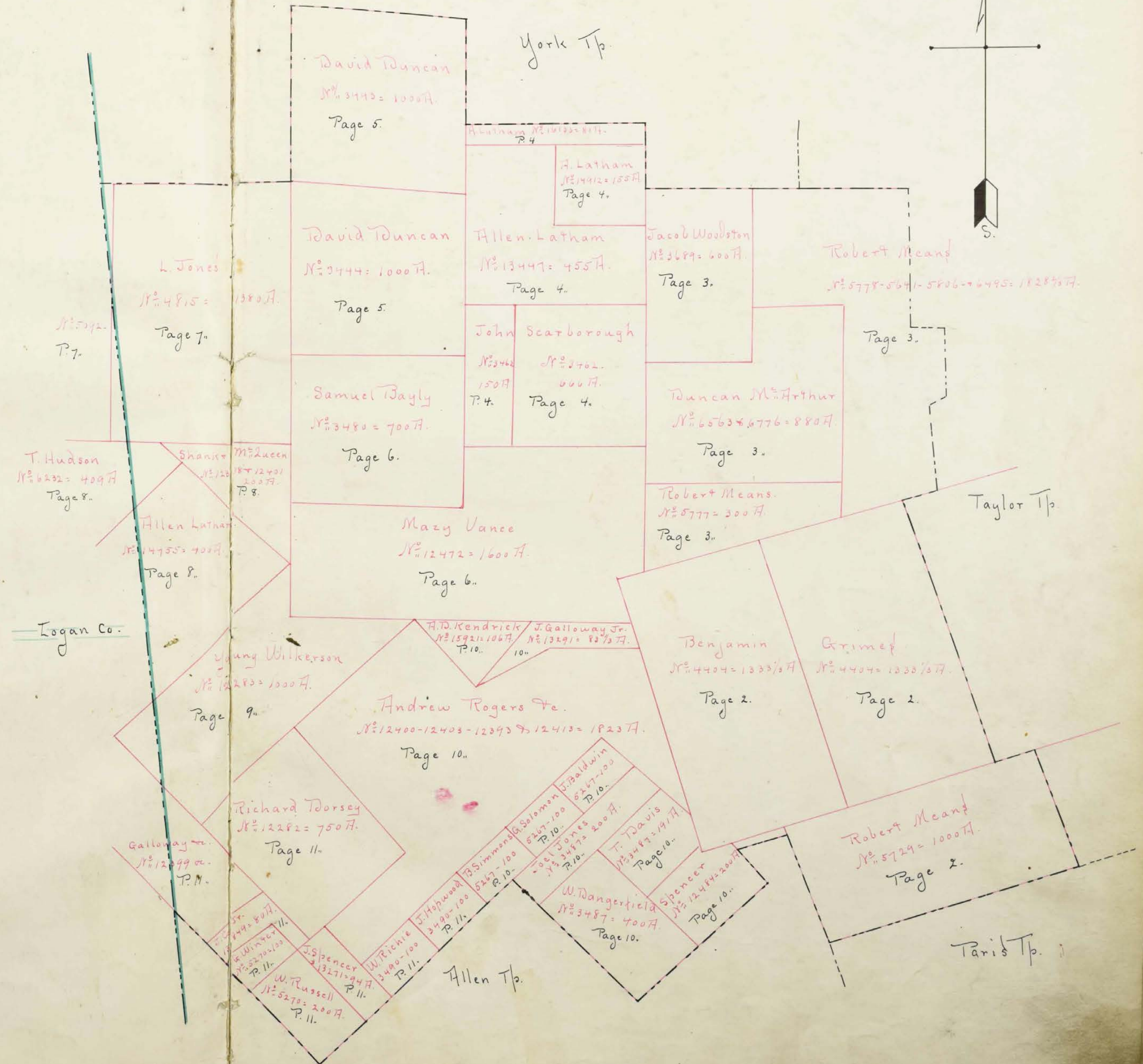
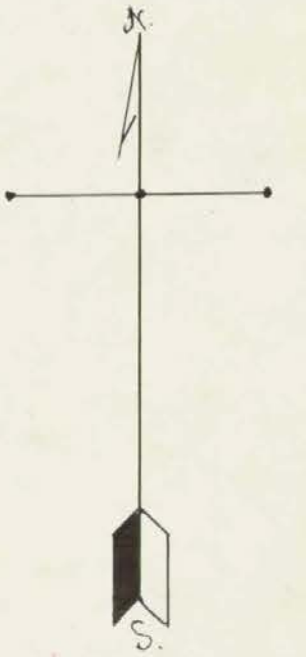
OFFICIAL STATEMENT OF SURVEYS.

Page.	No. of Original Survey.	Original Quantity.	Original Proprietors.	Water Course.	Page.
5	6563 + 6776	880	Duncan M ^e . Fisher	Mill Creek	3
5	12282	750	Richard Dorsey (Heire)	Darby Creek	11
4	12283	1000	Young Wilkinson	Darby Creek	9
4	12388 ⁹ / ₂ 12401	200	John Shanker ⁹ / ₂ Joshua M ^e . Queen	Mill Creek	8
6	12399-12402-12395		Jas. Galloway Jr. William		
10	12427 + 12428	523	Schooler + Joshua M ^e . Queen.	Darby Creek	11
10	12400-12403-		Andrew Rodgers - Joshua	Darby ^{and}	10 +
10	12393 + 12413	1823	M ^e . Queen and others	Mill Creek	11
10	12472	1600	Mazy or Mary Vance	Mill Creek	6
11	12484	200	Joseph Spencer	Mill Creek	10
11	13271	94	Joseph Spencer	Darby Creek	11
3	13291	83 ¹ / ₃	James Galloway Jr.	Mill Creek	10
2	13447	455	Allen Latham	Mill Creek	4
2	13849	80	James Galloway Jr.	Darby Creek	11
7	14755	400	Allen Latham (Assignee)	Mill Creek	8
11	14912	55	Allen Latham	Mill Creek	4
7	15921	100	A. D. Kendrick	Mill Creek	10
10	16133	81	Allen Latham	Mill + Boker Creek	4
10					
10					
11					
11					
2					

WE HEREBY CERTIFY, that the foregoing is a true Schedule of the Original Surveys, Quantities, Proprietors, and Water Courses, taken from the Official Records, in the offices of the Auditor and Surveyor of Union County, Ohio, in which are situate the Lands and Lots assessed for taxation in _____ Township, Union County, Ohio.



SCALE, 80 POLES TO AN INCH.



David Duncan
N^o 3443 = 1000 A.
Page 5.

York Tp.

A. Latham
N^o 1412 = 155 A.
Page 4.

L. Jones
N^o 4815 = 1380 A.
Page 7.

David Duncan
N^o 3444 = 1000 A.
Page 5.

Allen Latham
N^o 13447 = 455 A.
Page 4.

Jacob Woodston
N^o 3689 = 600 A.
Page 3.

Robert Means
N^o 5778-5641-5806-76495 = 1828 1/2 A.

John Scarborough
N^o 3460 = 150 A.
P. 4.

N^o 3402 = 600 A.
Page 4.

Duncan M^r Arthur
N^o 6563 & 6776 = 880 A.
Page 3.

Page 3.

T. Hudson
N^o 6232 = 409 A.
Page 8.

Shank
N^o 120
P. 8.

Allen Latham
N^o 4755 = 700 A.
Page 8.

Samuel Bayly
N^o 3480 = 700 A.
Page 6.

Mazy Vance
N^o 12472 = 1600 A.
Page 6.

Robert Means
N^o 5777 = 300 A.
Page 3.

Taylor Tp.

Logan Co.

Young Wilkerson
N^o 12283 = 1500 A.
Page 9.

Andrew Rogers &c.
N^o 12400-12403-12393 & 12413 = 1823 A.
Page 10.

Benjamin
N^o 4404 = 1333 1/2 A.
Page 2.

Grimes
N^o 4404 = 1333 1/2 A.
Page 2.

Richard Dorsey
N^o 12282 = 750 A.
Page 11.

Galloway
N^o 12099 &c.
P. 11.

Allen Tp.

Robert Means
N^o 5729 = 1000 A.
Page 2.

Paris Tp.

W. Russell
N^o 5270 = 200 A.
P. 11.

W. Spencer
N^o 3271 = 94 A.
P. 11.

W. Richie
N^o 3400 = 100 A.
P. 11.

J. Hopwood
N^o 3499 = 100 A.
P. 11.

W. Dangerfield
N^o 3487 = 400 A.
Page 10.

Spencer
N^o 12414 & 2000
Page 10.

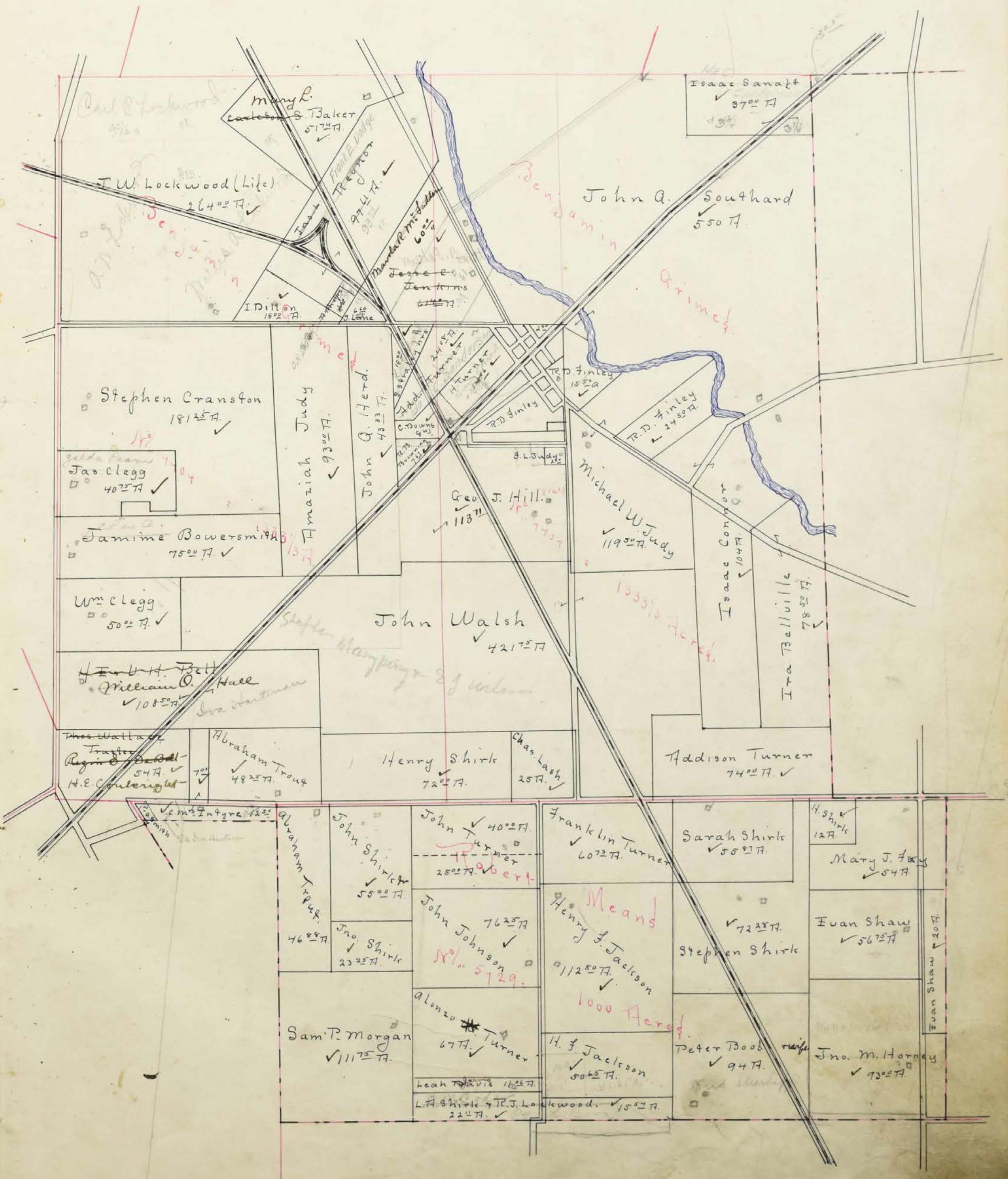
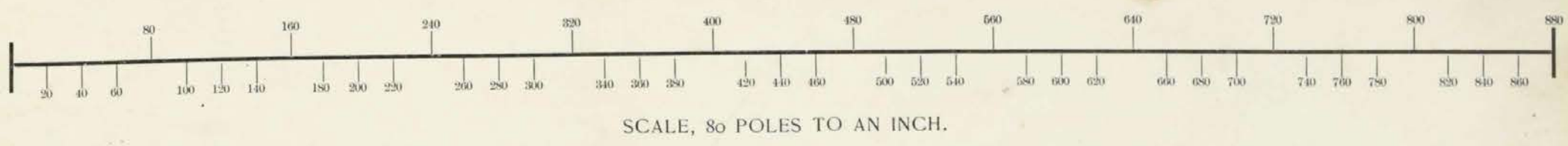
T. Davis
N^o 3477 = 147 A.
Page 10.

J. Jones
N^o 3477 = 200 A.
P. 10.

Baldwin
N^o 5277 = 100 A.
P. 10.

Salomon
N^o 5277 = 100 A.
P. 10.

W. Simmons
N^o 5277 = 100 A.
P. 10.



Mary L. Baker 57 1/2 A.
J.W. Lockwood (Life) 264 00 A.
I. Dillon 16 00 A.

Isaac Sanakt 37 00 A.

John A. Southard 550 A.

Stephen Cranston 181 25 A.

Jas. Clegg 40 00 A.

Jamime Bowersmith 75 00 A.

Wm. Clegg 50 00 A.

William O. Hall 108 50 A.

Regin Bell 54 A.

Abraham Traug 48 25 A.

Henry Shirk 72 00 A.

Chas. Lash 25 A.

Addison Turner 74 00 A.

John Shirk 55 00 A.

John Tur 40 00 A.

Franklin Turner 60 22 A.

Sarah Shirk 55 00 A.

Mary J. Fox 54 A.

John Johnson 76 25 A.

Henry Means 112 50 A.

Stephen Shirk 72 25 A.

Evan Shaw 56 75 A.

John Shirk 23 25 A.

Alonzo Turner 67 A.

H. F. Jackson 50 65 A.

Peter Boos 94 A.

Jno. M. Horney 93 00 A.

Sam'l Morgan 111 75 A.

Leah Davis 16 25 A.

L.A. Shirk & R.J. Lockwood 22 4 A.

1000 Acres

1000 Acres

Amaziah Judy 93 00 A.

John Q. Herd 43 23 A.

Geo. J. Hill 113 A.

R.D. Finley 14 50 A.

Michael W. Judy 119 50 A.

Ira Bellville 78 50 A.

John Walsh 421 75 A.

1333 1/2 Acres

1333 1/2 Acres

1333 1/2 Acres

1333 1/2 Acres

1333 1/2 Acres

1333 1/2 Acres

1333 1/2 Acres

1333 1/2 Acres

1333 1/2 Acres

1333 1/2 Acres

1333 1/2 Acres

1333 1/2 Acres

1333 1/2 Acres

1333 1/2 Acres

1333 1/2 Acres

1333 1/2 Acres

1333 1/2 Acres

1333 1/2 Acres

1333 1/2 Acres

1333 1/2 Acres

1333 1/2 Acres

1333 1/2 Acres

1333 1/2 Acres

1333 1/2 Acres

1333 1/2 Acres

1333 1/2 Acres

1333 1/2 Acres

1333 1/2 Acres

1333 1/2 Acres

1333 1/2 Acres

1333 1/2 Acres

1333 1/2 Acres

1333 1/2 Acres

1333 1/2 Acres

1333 1/2 Acres

1333 1/2 Acres

1333 1/2 Acres

1333 1/2 Acres

1333 1/2 Acres

1333 1/2 Acres

1333 1/2 Acres

1333 1/2 Acres

1333 1/2 Acres

1333 1/2 Acres

1333 1/2 Acres

1333 1/2 Acres

1333 1/2 Acres

1333 1/2 Acres

1333 1/2 Acres

1333 1/2 Acres

1333 1/2 Acres

1333 1/2 Acres

1333 1/2 Acres

1333 1/2 Acres

1333 1/2 Acres

1333 1/2 Acres

1333 1/2 Acres

1333 1/2 Acres

1333 1/2 Acres

1333 1/2 Acres

1333 1/2 Acres

1333 1/2 Acres

1333 1/2 Acres

1333 1/2 Acres

1333 1/2 Acres

1333 1/2 Acres

1333 1/2 Acres

1333 1/2 Acres

1333 1/2 Acres

1333 1/2 Acres

1333 1/2 Acres

1333 1/2 Acres

1333 1/2 Acres

1333 1/2 Acres

1333 1/2 Acres

1333 1/2 Acres

1333 1/2 Acres

1333 1/2 Acres

1333 1/2 Acres

1333 1/2 Acres

1333 1/2 Acres

1333 1/2 Acres

1333 1/2 Acres

1333 1/2 Acres

1333 1/2 Acres

1333 1/2 Acres

1333 1/2 Acres

1333 1/2 Acres

1333 1/2 Acres

1333 1/2 Acres

1333 1/2 Acres

1333 1/2 Acres

1333 1/2 Acres

1333 1/2 Acres

1333 1/2 Acres

1333 1/2 Acres

1333 1/2 Acres

1333 1/2 Acres

1333 1/2 Acres

1333 1/2 Acres

1333 1/2 Acres

1333 1/2 Acres

1333 1/2 Acres

1333 1/2 Acres

1333 1/2 Acres

1333 1/2 Acres

1333 1/2 Acres

1333 1/2 Acres

1333 1/2 Acres

1333 1/2 Acres

1333 1/2 Acres

1333 1/2 Acres

1333 1/2 Acres

1333 1/2 Acres

1333 1/2 Acres

1333 1/2 Acres

1333 1/2 Acres

1333 1/2 Acres

1333 1/2 Acres

1333 1/2 Acres

1333 1/2 Acres

1333 1/2 Acres

1333 1/2 Acres

1333 1/2 Acres

1333 1/2 Acres

1333 1/2 Acres

1333 1/2 Acres

1333 1/2 Acres

1333 1/2 Acres

1333 1/2 Acres

1333 1/2 Acres

1333 1/2 Acres

1333 1/2 Acres

1333 1/2 Acres

1333 1/2 Acres

1333 1/2 Acres

1333 1/2 Acres

1333 1/2 Acres

1333 1/2 Acres

1333 1/2 Acres

1333 1/2 Acres

1333 1/2 Acres

1333 1/2 Acres

1333 1/2 Acres

1333 1/2 Acres

1333 1/2 Acres

1333 1/2 Acres

1333 1/2 Acres

1333 1/2 Acres

1333 1/2 Acres

1333 1/2 Acres

1333 1/2 Acres

1333 1/2 Acres

1333 1/2 Acres

1333 1/2 Acres

1333 1/2 Acres

1333 1/2 Acres

1333 1/2 Acres

1333 1/2 Acres

1333 1/2 Acres

1333 1/2 Acres

1333 1/2 Acres

1333 1/2 Acres

1333 1/2 Acres

1333 1/2 Acres

1333 1/2 Acres

1333 1/2 Acres

1333 1/2 Acres

1333 1/2 Acres

1333 1/2 Acres

1333 1/2 Acres

1333 1/2 Acres

1333 1/2 Acres

1333 1/2 Acres

1333 1/2 Acres

1333 1/2 Acres

1333 1/2 Acres

1333 1/2 Acres

1333 1/2 Acres

1333 1/2 Acres

1333 1/2 Acres

1333 1/2 Acres

1333 1/2 Acres

1333 1/2 Acres

1333 1/2 Acres

1333 1/2 Acres

1333 1/2 Acres

1333 1/2 Acres

1333 1/2 Acres

1333 1/2 Acres

1333 1/2 Acres

1333 1/2 Acres

1333 1/2 Acres

1333 1/2 Acres

1333 1/2 Acres

1333 1/2 Acres

1333 1/2 Acres

1333 1/2 Acres

1333 1/2 Acres

1333 1/2 Acres

1333 1/2 Acres

1333 1/2 Acres

1333 1/2 Acres

1333 1/2 Acres

1333 1/2 Acres

1333 1/2 Acres

1333 1/2 Acres

1333 1/2 Acres

1333 1/2 Acres

1333 1/2 Acres

1333 1/2 Acres

1333 1/2 Acres

1333 1/2 Acres

1333 1/2 Acres

1333 1/2 Acres

1333 1/2 Acres

1333 1/2 Acres

1333 1/2 Acres

1333 1/2 Acres

1333 1/2 Acres

1333 1/2 Acres

1333 1/2 Acres

1333 1/2 Acres

1333 1/2 Acres

1333 1/2 Acres

1333 1/2 Acres

1333 1/2 Acres

1333 1/2 Acres

1333 1/2 Acres

1333 1/2 Acres

1333 1/2 Acres

1333 1/2 Acres

1333 1/2 Acres

1333 1/2 Acres

1333 1/2 Acres

1333 1/2 Acres

1333 1/2 Acres

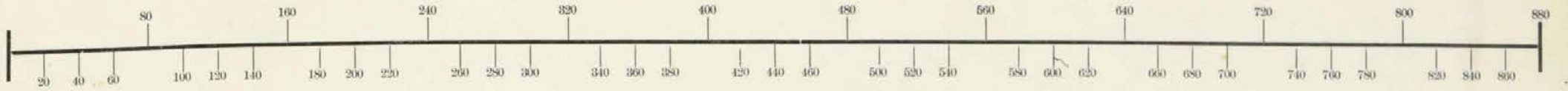
1333 1/2 Acres

1333 1/2 Acres

1333 1/2 Acres

1333 1/2 Acres

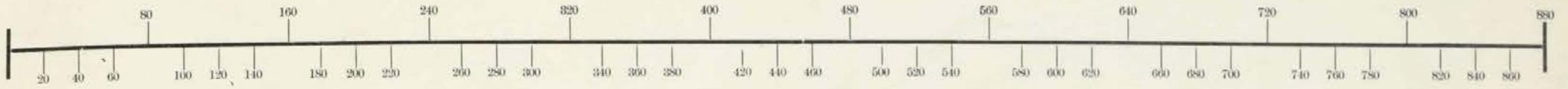
1333



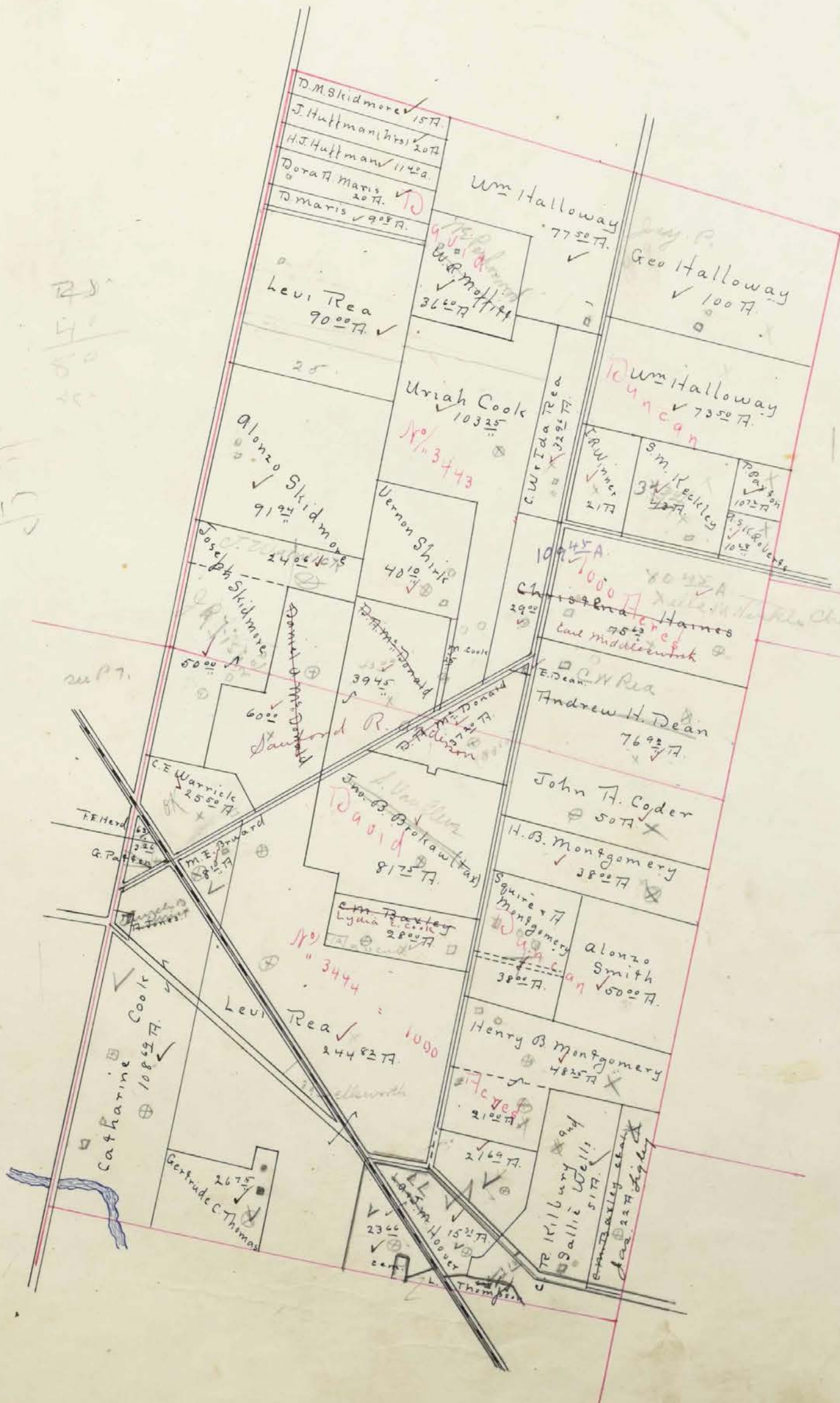
125.50
1.14.10
10.00
250.00

John Q. Souhard

62.50
23.70
38.80



152



$$\begin{array}{r} 40 \\ 57 \\ \hline 65 \\ 215 \\ \hline \end{array}$$

$$\begin{array}{r} 1143 \\ 9.05 \\ \hline 20157 \end{array}$$

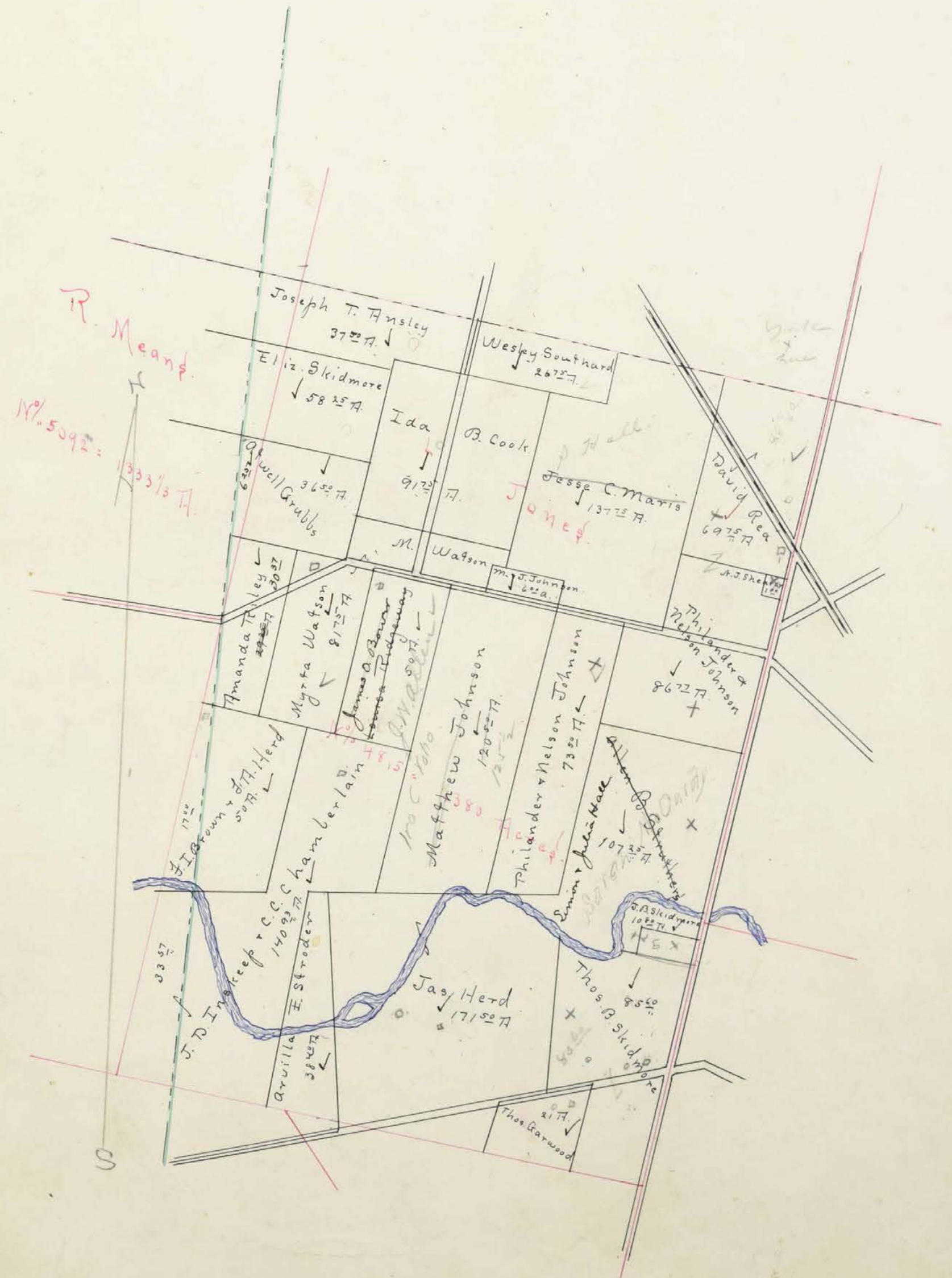
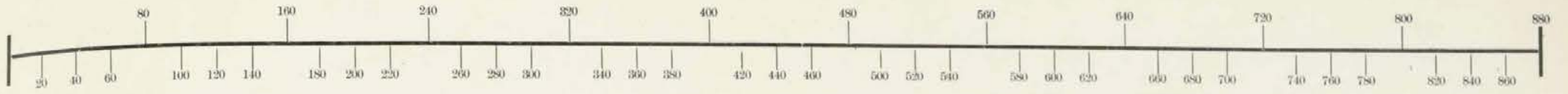
$$\begin{array}{r} 2720 \\ 1200 \\ \hline 3920 \\ 2100 \\ \hline 6020 \end{array}$$

changed by A.S. moving Abstract



SCALE, 80 POLES TO AN INCH.





R. Means
N. 5092:
1333 1/3 A.

Joseph T. Ansley
37 5/8 A.

Wesley Southard
26 7/8 A.

Eliz. Skidmore
58 25/8 A.

Ida
9 1/2 A.

B. Cook

Jesse C. Maris
137 1/2 A.

David Rea
69 7/8 A.

Abuel Grubbs
36 5/8 A.

M. Watson

M. J. Johnson
6 1/2 A.

J. J. Shepley
1 1/2 A.

Amanda T. Wiley
26 5/8 A.

Myra Watson
8 1/2 A.

James O. Brown
James R. Ridgeway
No. C. 1000
Matthew Johnson
120 5/8 A.

Philander & Nelson Johnson
73 5/8 A.

Philander & Nelson Johnson
86 1/2 A.

F. I. Brown & P. H. Herd
17 1/2 A.

James O. Brown
James R. Ridgeway
Hamberlain

Matthew Johnson
120 5/8 A.

Philander & Nelson Johnson
73 5/8 A.

Simon & Jean Mac
107 25/8 A.

J. D. Inskeep
33 5/8 A.

J. C. C. Stroder
140 5/8 A.

Jay Herd
17 1/2 A.

Philander & Nelson Johnson
73 5/8 A.

Simon & Jean Mac
107 25/8 A.

Arvilla
38 5/8 A.

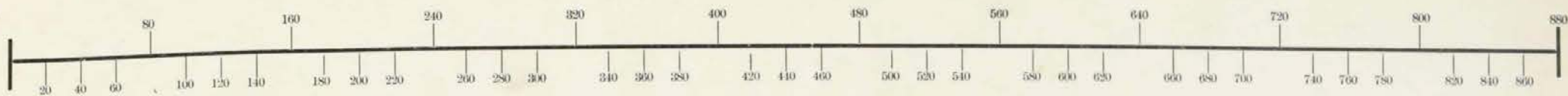
Jay Herd
17 1/2 A.

Thos. B. Skidmore
85 5/8 A.

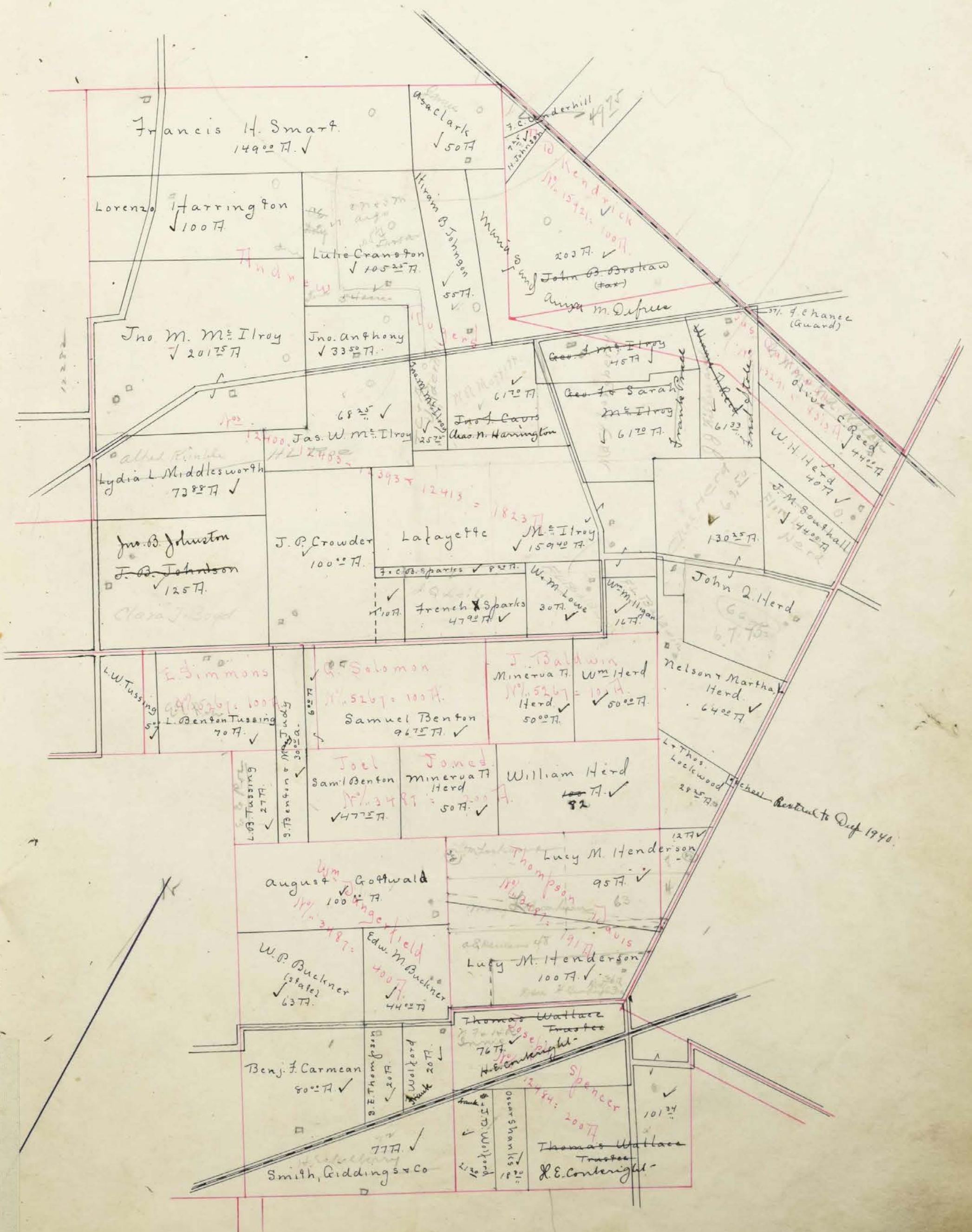
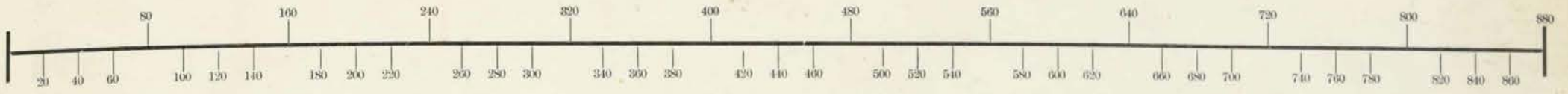
Thos. B. Skidmore
85 5/8 A.

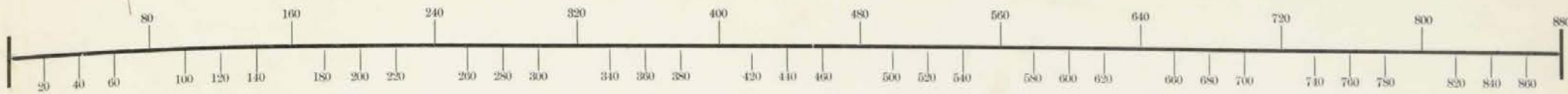
Thos. B. Skidmore
85 5/8 A.

Thos. Garwood
2 1/2 A.



1953
33 RR
17.17





Town of Newton



SCALE, 10 POLES TO AN INCH.

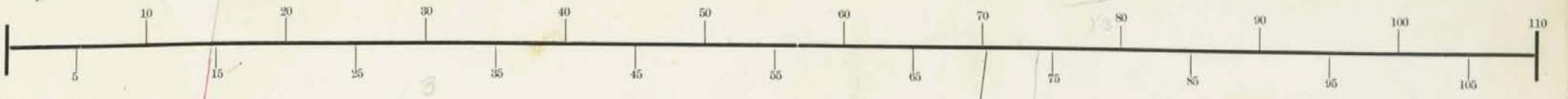


June 97

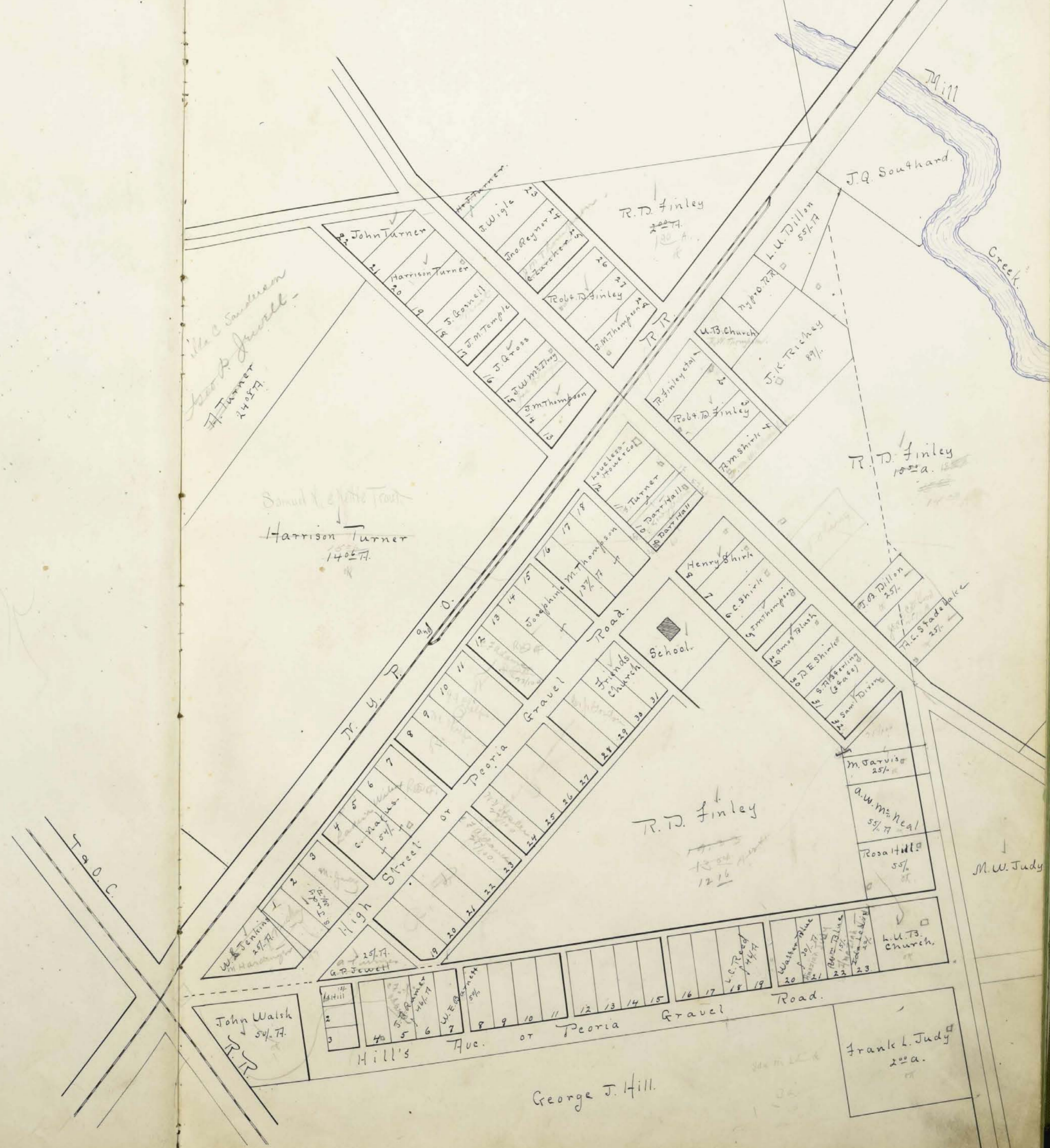
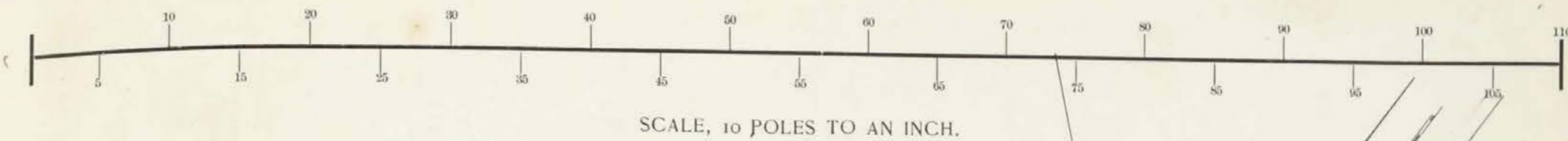
Haggan
Williams

D. H. Henderson

Town of - Newton -



Town of Peoria



W.C. Sanderson
Jesse B. Jewell
H. Turner
24 25 77.

Samuel C. Little Trust
Harrison Turner
14 05 77.

T.A.O.C.

John Walsh
54 77.

G.P. Jewett
25 77.

George J. Hill.

R.T. Finley
13 24
12 16

Frank L. Judy
20 a.

M.W. Judy

R.T. Finley
10 22 a.

J.O. Dillon
25 77.

M. Jarvis
25 77.

A.W. McNeal
59 77.

Rosa Hill
55 77.

L.U. Church
77.

W. Reed
44 77.

W. Reed
44 77.

W. Reed
44 77.

W. Reed
44 77.

DESCRIPTION OF PROPERTY.

No. of Acres of Land Classified.

In Whose Name Assessed.	No. of Entry.	Original Quantity.	Original Proprietor.	Unincorporated Towns.	Feet Front.	No. of Acres of Land Classified.				Whole No. of Acres.	Value per Acre excluding Buildings.	Total Value of Lands, excluding Buildings.	Value of all Buildings.			Total Value of Lands and Buildings.	Amount Added or Deducted by Co. Board of Equalization.		Total Value as Equalized by Co. Board.	Amount Added or Deducted by State Board of Equalization.		Total Value as Equalized by State Board.	Page.	REMARKS.						
						Arable and Plow Land.	Meadow and Pasture Land.	Uncultivat'd and Wood Land.	Acres.				H.	Acres.	H.		Acres.	H.		Houses.	Mills.				Other Buildings.	Added Dollars.	Deducted Dollars.	Added Dollars.	Deducted Dollars.	
Bell H. E. & N. H.	4404	133 2/3	B. Kinnis			88	50				20				188	50	12	1302	150	100	1552	77		1620	9	E. J. Atkinson				
Barnett W. C.	"	"	Do												50	50		25	125		150	8		160	✓					
Blue Wm.	"	"	Do												15	50		8			8			10	✓					
Blue Walter	"	"	Do												30	50		15			15			20	✓					
Brosnan Jno. B. (tax)	12282	750	R. Dorsey			70					25				95	15		1425	150	100	1675	84		1740	15	G. B. W. Smith				
Same	5270	200	W. Russell												20	10		300			300	15		310	8	E. J. Atkinson				
Babill Mary	13477	455	A. Latham			4									4	15		60	100		160	8		160	✓	4				
Book Uriah et al	3443	1070	D. Duncan			65	18	25			20				103	25	15	1549		100	1679	82		1730	✓	6	140 to W. B. Moffitt			
Book Ida B.	4815	1380	L. Jones			66	75				25				91	75	14	1284	150	100	1534	77		1570	✓	35				
Carter John	6563+	880	D. M. Arthur			22	25								22	25	15	334			334	17		340	✓	15				
Carter Charles	"	"	Do			40									42	25	14	591			591	30		600	✓	21				
Cabill William	"	"	Do			50	5				20				75	12		900	150		1050	53		1090	✓	12	Jno Medford			
Clegg James	4404	33 2/3	B. Kinnis			20	75	10			10				40	75	14	570	150	100	820	41		850	✓	8				
Clegg William	"	"	Do			15					35				50	11		550	150		700	35		730	✓	8				
Connor Isaac	"	"	Do			64	20				20				104	13		1352	150	100	1602	80		1650	✓	36				
Cranston Stephen	"	"	Do			121	25				60				181	25	14	2537		100	2637	132		2780	✓	42				
Cranston Lulie	12400+	1823	A. Rogers			60	25				40				105	25	13	1368	125		1493	75		1560	✓	4				
* Crowder J. P.	"	"	Do			98					12				110			1570	800	200	2870	144		2990	✓	22	See 13 and 122			
Book Melinda	3443	1000	D. Duncan												25	12		3			3			10	✓	✓				
Colver Ozias	5778+	1823 2/3	R. Means			47					20				67	15		1005	100	100	1205	60		1250	✓	12				
Collins Elizabeth	"	"	Do			24					1				25	13		325			325	16		340	✓	A				
Collins Alice M.	"	"	Do			17	5				3				25	13		325	150		475	24		490	✓	9				
Collins Joseph	"	"	Do			19					6				25	13		325			325	16		340	✓	✓				
Carroll Henry	3689	600	J. Woolston			28	7				5				40	11		470	250	100	790	40		820	✓	15				
Clark Ora	12400	1823	T. Rogers			30	5				15				50	12		600			600	30		630	✓	✓				
Book Catharine	3444	1000	D. Duncan			83	69				25				108	69	13	1413	150	100	1663	83		1700	✓	48				
Culver Leander	6563	880	D. M. Arthur			12					12				12			288	125	100	513	26		540	✓	3	See F. M. Shroy			
Culver Hannah (See Culver above)	"	"	Do												12			12			12			12	✓	3	Same			
Carr Jno. T.	12400	1823	A. Rogers			54					7 70				61	70	13	802			802	40		820	✓	20	G. M. Harrington			
Chance Frank (Guard)	12472	1600	M. Vance												37											✓	✓			
* Crowder J. P. (See Crowder above)	12400	1823	A. Rogers												40												✓			
Cabill Lucy E.	3689	600	J. Woolston			4	13				34 25				41	25	11	454			454	23		470	✓	4				
Carnegie S. F.	3487	400	W. Danglerfield			75					5				80	13		1040	150		1190	60		1200	✓	18				
Coder John A.	3444	1000	D. Duncan			40					10				50	15		750			750	38		770	✓	8				
Danforth Thomas C.	3462	666	J. Scarborough			51	50	60			7				111	50	13	1480	125	200	1785	89		1840	✓	26				
Same	13447	455	A. Latham			100	15				10 50				125	50	13	1631			1631	82		1700	✓	13				
Dillon Isaac	4404	133 2/3	B. Kinnis			18									18	12		216			216	11		220	✓	12				
Dillon N. G.	6563+	880	D. M. Arthur			14	13	75							27	75	12	333	100		433	22		450	✓	7				
						1408	89	192	25	433	70							2034	84	604	27440	3350	1000	32290						

DESCRIPTION OF PROPERTY.

No. of Acres of Land Classified.

Table with columns: In Whose Name Assessed., No. of Entry, Original Quantity, Original Proprietor., Unincorporated Towns., Feet Front., Acres, H., Acres, H., Acres, H.

Table with columns: Whole No. of Acres., Value per Acre excluding Buildings., Total Value of Lands, excluding Buildings., Value of all Buildings. (Houses, Mills, Other Buildings.), Total Value of Lands and Buildings., Amount Added or Deducted by Co. Board of Equalization., Total Value as Equalized by Co. Board., Amount Added or Deducted by State Board of Equalization., Total Value as Equalized by State Board., Page., REMARKS.

DESCRIPTION OF PROPERTY.

No. of Acres of Land Classified.

Table with columns: In Whose Name Assessed, No. of Entry, Original Quantity, Original Proprietor, Unincorporated Towns, Feet Front, No. of Acres of Land Classified (Arable and Plow Land, Meadow and Pasture Land, Uncultivated and Wood Land), Whole No. of Acres, Value per Acre excluding Buildings, Total Value of Lands excluding Buildings, Value of all Buildings (Houses, Mills, Other Buildings), Total Value of Lands and Buildings, Amount Added or Deducted by Co. Board of Equalization, Total Value as Equalized by Co. Board, Amount Added or Deducted by State Board of Equalization, Total Value as Equalized by State Board, Page, REMARKS.

1496.95 423.33 934.54

3354 68

48151 5700 2225 66076

6000 returned by Henderson Dec.

DESCRIPTION OF PROPERTY.

Table with columns: In Whose Name Assessed, No. of Entry, Original Quantity, Original Proprietor, Unincorporated Towns, Feet Front, No. of Acres of Land Classified (Arable and Plow Land, Meadow and Pasture Land, Uncultivat'd and Wood Land).

986 39 368 87 367 33

Table with columns: Whole No. of Acres, Value per Acre (Dollars, Cts), Total Value of Lands (Dollars), Value of all Buildings (Houses, Mills, Other Buildings), Total Value of Lands and Buildings, Amount Added or Deducted by Co. Board of Equalization, Total Value as Equalized by Co. Board, Amount Added or Deducted by State Board of Equalization, Total Value as Equalized by State Board, Page, REMARKS.

1724 59 22769 4335 1150 27973

In Whose Name Assessed.	No. of Entry.	Original Quantity.	Original Proprietor.	Unincorporated Towns.	Feet Front.	No. of Acres of Land Classified.					Whole No. of Acres.	Value per Acre excluding Buildings.	Total Value of Lands, excluding Buildings.	Value of all Buildings.			Total Value of Lands and Buildings.	Amount Added or Deducted by Co. Board of Equalization.		Total Value as Equalized by Co. Board.	Amount Added or Deducted by State Board of Equalization.		Total Value as Equalized by State Board.	Page.	REMARKS.
						Arable and Plow Land.	Meadow and Pasture Land.	Uncultivat'd and Wood Land.		Houses.				Mills.	Other Buildings.	Added Dollars.		Deducted Dollars.	Added Dollars.		Deducted Dollars.				
								Acres.	H.													Acres.			
Jackson Henry F.	5729	1000	R Means			64	8	40	30	112	50	15	1688	250	100	2038	102	2120			22				
Same	"	"	Do			40	65	10		50	65	14	709			709	35	740			8				
Jarris Leah	"	"	Do			8			3	11	06	13	144	100		244	12	260			✓				
Jarris Marilla	4404	1333 1/3	B. Kermis			25				25	66		16	100		116	6	120			✓				
Jenkins Jesse C.	4404-4404	2666 2/3	Do			31	40		30	61	40	16	982	250	100	1332	67	1360			40				
Judy Amajah	4404	1333 1/3	Do			73			20	93	15		1395	200		1595	80	1660			12				
Judy Michael W.	"	"	Do			53	50	6	60	119	50	16	1912	150	100	2162	108	2250			25				
Jackson W. F.	5778+	1828 1/3	R Means			20			8	28	17		476	100		576	29	600			3				
Jackson Frank	3777+	1180	Means + M. Arthur	Raymond.		25				25	40		10			10		10			✓	8 L. Bowden			
Judy Frank L.	4404	1333 1/3	B. Kermis	Clonia		2				2	20		40	150		190	10	190			8				
Jones Lafa	3444	1000	D. Duncan							75			Now owned by Lunda Disciple Church.									✓			
Jenkins Wm L.	4404	1333 1/3	B. Kermis						25	25	66		16			16		20			✓	M. Harding			
Jones W. Guy (tax)	6232	400	F. Hudson					3	85	3	85	17	66			66	3	70			4	See Brown			
Judy L.	4404	1333 1/3	B. Kermis						30	30	66		20			20	1	20			✓				
Jewell G. P.	"	"	Do			25				25	66		16	200		216	11	230			✓				
Johnson John B.	12400	1823	A. Rogers			110	15			125	15		1875	125		2000	100	2070			30				
Keeley Susanna W.	3443	1500	D. Duncan			34				43	34	13	442	100		542	27	560			7				
Lockwood J. W. (Life Est.)	12472	1600	M. Vance					5		5	13		65			65	3	70			✓				
Same	"	"	Do			28			13	41	25	13	536	100	100	736	37	760			15				
Same	4404	1333 1/3	B. Kermis			150	50	64		264	13		3432	225	200	3957	193	4000			55				
Lockwood Crastus	12472	1000	M. Vance	Raymond.				75		75	50		37	200		237	12	250			✓				
Lockwood Warren S.	12283	1000	W. Wilkinson			40			10	50	13		650			650	53	650			9				
Lowe Lucas (Srs.)	3462	666	J. Scarborough			63			28	91	12		1092	100		1192	60	1240			14	Banker's Note			
Larrison J. A.	5250	200	M. Russell			13			7	20	13		260			260	13	270			✓	C. H. Winters (Tax)			
Lockwood Thos. & Lora	12400+	1823	A. Rogers			25	3	25		28	25	12	339	150		489	24	510			6				
Lusk Charles	4404	1333 1/3	B. Kermis			17			8	25	14		350			350	16	350			18				
Lyons Amos H.	12472	1600	M. Vance			3	93	2	3	8	93	25	223	150		373	19	390			✓				
Lowe Amanda	"	2480	Do + M. Arthur					8	65	8	65	25	215	100		315	16	330			✓				
Lowe Willard & Mary	12400+	1000	A. Rogers			30				30	12		360	200	100	660	33	670			18				
Landgraver Chas. G.	12282	750	R. Dorsey			8	85			8	85	12	106			106	5	110			3	B. D. Johnson			
Same	"	"	Do			25	40			25	40	12	305			305	15	310			15	"			
Lane Selamoy	4404-4404	2666 2/3	B. Kermis			60	6			6	60	16	106			106	5	110			4				
Landon Sabina	12472	1600	M. Vance			26	25			26	25	15	394			394	20	390			20				
Lockwood Chas. H.	6563	880	D. M. Arthur			13				13	13		169			169	8	170			3				
Same	5778+	1828 1/3	R. Means			57	15	35		107	13		1391	150	100	1641	82	1720			7				
Landgraver M. V.	12282	750	R. Dorsey			15	75			15	75	12	189			189	9	200			3	B. D. Johnson			
Lewis Ida	4404	1333 1/3	B. Kermis					22		22	66		15			15		20			✓				
Landon Orange G.	12472	1600	M. Vance			50	40			50	40	14	706			706	35	730			12				
						1004	48	124	05	340	06		1468	59		20747	3100	800	24647						

DESCRIPTION OF PROPERTY.

No. of Acres of Land Classified.

Table with columns: In Whose Name Assessed, No. of Entry, Original Quantity, Original Proprietor, Unincorporated Towns, Feet Front, Acres, H., Acres, H., Acres, H.

1233 09 193 14 606 60

Whole No. of Acres, Value per Acre excluding Buildings, Total Value of Lands, excluding Buildings, Value of all Buildings (Houses, Mills, Other Buildings), Total Value of Lands and Buildings, Amount Added or Deducted by Co. Board of Equalization, Total Value as Equalized by Co. Board, Amount Added or Deducted by State Board of Equalization, Total Value as Equalized by State Board, Page, REMARKS.

Table with columns: Acres, H., Dols., Cts., Dollars, Dollars, Dollars, Dollars, Added Dollars, Deducted Dollars, Dollars, Dollars, Dollars, Dollars.

2032 83 28975 3725 1325 33720

DESCRIPTION OF PROPERTY.

No. of Acres of Land Classified.

Table with columns: In Whose Name Assessed, No. of Entry, Original Quantity, Original Proprietor, Unincorporated Towns, Feet Front, No. of Acres of Land Classified (Arable and Plow Land, Meadow and Pasture Land, Uncultivat'd and Wood Land), Whole No. of Acres, Value per Acre excluding Buildings, Total Value of Lands, Value of all Buildings (Houses, Mills, Other Buildings), Total Value of Lands and Buildings, Amount Added or Deducted by Co. Board of Equalization, Total Value as Equalized by Co. Board, Amount Added or Deducted by State Board of Equalization, Total Value as Equalized by State Board, Page, REMARKS.

981 90 166 87 511 90

1660 67 24320 2400 1050 27770

DESCRIPTION OF PROPERTY.

Table with columns: In Whose Name Assessed, No. of Entry, Original Quantity, Original Proprietor, Unincorporated Towns, Feet Front, No. of Acres of Land Classified (Arable and Plow Land, Meadow and Pasture Land, Uncultivat'd and Wood Land), Whole No. of Acres, Value per Acre excluding Buildings, Total Value of Lands excluding Buildings, Value of all Buildings (Houses, Mills, Other Buildings), Total Value of Lands and Buildings, Amount Added or Deducted by Co. Board of Equalization, Total Value as Equalized by Co. Board of Equalization, Amount Added or Deducted by State Board of Equalization, Total Value as Equalized by State Board, Page, REMARKS.

DESCRIPTION OF PROPERTY.

In Whose Name Assessed.	No. of Entry.	Original Quantity.	Original Proprietor.	Unincorporated Towns.	Feet Front.	No. of Acres of Land Classified.					
						Arable and Plow Land.		Meadow and Pasture Land.		Uncultivat'd and Wood Land.	
						Acres.	H.	Acres.	H.	Acres.	H.
Turner Alonzo	5729	1000	R. Means.			50	15	2			
Trout Abraham	4404	1333 1/3	B. Kerms.			48	25				
Same	5729	1000	R. Means.			26	88			20	
Thomas Gertrude C.	3450	700	J. Bagley					23	25		
Same	3444	1000	J. Duncan.			26	75				
Turner Franklin	5729	"	R. Means			35	73			25	
Townsend Phoebe (Guard)	12399 +	523	J. Balloway Jr.			35					
Turner Martine	6232	400	T. Hudson.			12	4				
Tusing L. Benton	5267	100	B. Simmons.			70					
Same	3457	200	J. Jones.			7				20	
Tusing Leroy C.	3490	100	J. Hopwood			25					
Same	"	"	Do.			10	10			60	
Same	12400	1823	A. Rogers or.			40					
Same	5267	100	B. Simmons.			5					
Townsend Jos. & Mary L.	12358	200	Shanks & M. Queen.			33	50	2	8		
Thomas Oma J.	12283	1000	J. Wilkinson			25				93	75
Tilton J. H.	12282	750	R. Dorsey			20	4				
Thompson Josephine M.	4404	1333 1/3	B. Kerms.					1	37		
Thompson Matilda G.	12472	400	M. Vance.				25				
Thompson Sarah C.	3457	"	R. Danglerfield			13				7	
Underhill J. C.	12472 +	2600	M. Vance			43	75			6	
Underhill Jos. H.	12472	1600	Do.			47	10			8	
Underhill Thos E.	3659	600	J. Crookston			17				8	
Vaukiver George	12472	400	M. Vance.			25					
Waton Myrta	4515	1380	L. Jones.			46	75			35	
Wheeler Henry	5777	300	R. Means			140	11			50	
Wreston Isaac P.	"	"	Do			15	27	84	25		
Same	11 +	1180	Do + M. Arthur			50	3				
Williams Clinton A.	"	"	Do			20	20				
Same	"	300	R. Means -			28	10	75			
Same	12472	1600	M. Vance.			7	12				
Wilson A. F.	"	"	Do				25				
Wells Sallie + C.R. Kilbury	3444	1000	J. Duncan			16	5			30	
						939	81	138	91	397	75

Whole No. of Acres.	Value per Acre excluding Buildings.	Total Value of Lands, excluding Buildings.	Value of all Buildings.			Total Value of Lands and Buildings.	Amount Added or Deducted by Co. Board of Equalization.	Total Value as Equalized by Co. Board.	Amount Added or Deducted by State Board of Equalization.	Total Value as Equalized by State Board.	Page.	REMARKS.
			Houses.	Mills.	Other Buildings.							
Acres.	H.	Dolls. Cts.	Dollars.	Dollars.	Dollars.	Dollars.	Added Dollars.	Deducted Dollars.	Dollars.	Added Dollars.	Deducted Dollars.	Dollars.
67	14	938				738	47		978			12
48	25	627	150			777	39		800			13
46	88	656				656	37		680			7
23	25	279				279	14		290			✓
26	75	348	200		100	648	32		680			✓
60	73	790				790	40		800			26
25		350				350	17		360			12
16		240	150			390	20		410			4
70		980	200		200	1430	74		1490			15 E. E. Roe
27		378				378	19		400			✓ E. E. Roe
25		300				300	15		300			18
70	10	771				771	39		800			14
40		440	350		150	940	47		960			14
5		60				60	3		60			✓
43	50	696	150		200	1046	52		1090			12
118	75	1425				1425	71		1500			✓
24		312				312	16		330			✓
1		90				90	5		100			✓
25		12	150			162	7		170			✓
20		260				260	13		270			4
49	75	746	300		100	1046	52		1090			8
55	10	826	100		100	1026	51		1070			12
25		325				325	16		340			6
25		400	100			500	25		510			15
51	75	1144				1144	57		1170			33
201	18	3618				3618	181		3460			27 Linnæ Roe
67	54	878				878	44		920			4
3	50	87	100			187	8		200			✓ Sadley + Butler
100	20	2000	200		100	2300	115		2360			60
35	75	504				504	25		530			✓
19	13	247	150		100	497	25		510			9
25	50	12	150			162	7		170			✓
51	11	561	150		100	811	41		830			20
1476	77	21300	2000		1200	25000						

In Whose Name Assessed.	No. of Entry.	Original Quantity.	Original Proprietor.	Unincorporated Towns.	Feet Front.	No. of Acres of Land Classified.															
						Arable and Plow Land.		Meadow and Pasture Land.		Uncultivat'd and Wood Land.											
						Acres.	H.	Acres.	H.	Acres.	H.										
Witteraft James H.	12399	523	J. Galloway		65	40					10										
Hatts J. J.	5775	1828 1/2	R. Means		90						12										
Wolford Frank	3457	400	W. Sangerfeld		20																
Wolford Frank & Jos. D.	12454	200	J. Spencer		21	20															
Wheeler Emma M.	12253	1000	J. Wilkinson		12						11	75									
Wheeler Wm W.	"	"	Do		3						20	75									
Wilson Lucy Dora	5777	300	R. Means			25															
Hallace Thos. (Trusted)	12454	200	J. Spencer		25		122	34			30										
Same (with above)	"	"	Do																		
Same	4404	1333 1/3	B. Kermes					5	4												
Harrick Carrie E.	3444	1000	D. Duncan		20		5	50													
Hinner Isaac R.	3443	"	Do		8						13										
Halsb John	4404	1333 1/3	B. Kermes		341		10	70			70										
Same	4404	"	Do					50													
Williams Siddle H.	16133	81	T. Larkam		56						6	00									
Wilkins N. A. & Rattie E.	6563	880	D. M. Arturs				3	63													
Goder Salome (Life Est)	12399	523	J. Galloway		20							5									

Mypans R. R. Co
 Toledo & Ohio Central R.R. Co
 Detroit & Lima Northern R.R. Co.

Whole No. of Acres.	Value per Acre excluding Buildings.	Total Value of Lands, excluding Buildings.	Value of all Buildings.			Total Value of Lands and Buildings.	Amount Added or Deducted by Co. Board of Equalization.	Total Value as Equalized by Co. Board.	Amount Added or Deducted by State Board of Equalization.	Total Value as Equalized by State Board.	Page.	REMARKS.
			Houses.	Mills.	Other Buildings.							
7540	14	1056			100	1156	58		1190			23
102	18	1836	100			1936	97		2010			27
20	12	240	120			360	18		370			12
2120	11	233				233	12		250			✓
2375	12	285				285	14		300			4
2375	12	285	100			385	19		400			4
25	80	20	150			200	10		210			✓
10134	12	2124			150	2274	114		2310			880
76												✓
54	12	648				648	32		670			6
2550	15	382	100			482	24		500			10
21	13	273				273	14		270			15
42175	15	6326	150		100	6576	329		6850			60
50	66	33				33	2		40			✓
6250	16	1000	100		100	1200	60		1240			16
363	25	90	100			190	10		200			✓
25	13	325	100			425	21		410			10

IN WHOSE NAME ASSESSED.	DESCRIPTION OF PROPERTY.							Value of Lots. Dollars.
	No. of In-Lot.	No. of Out-Lot.	What Part.	Street.	Feet.	Street.	Feet.	
Blush Amos.	29		all	Main	66	alley	165	20
Dixon Samuel	32		all	Main	66	alley	165	20
Family James F.	9		N pt	Main				10
Family Robert D et al	1		all	Main	66 24		165	20
Family Robert D.	2		"	Do	72		165	20
Same	3		"	Do	66		165	20
Same	20		"	Do	66	alley	165	20
Same	27		"	Do	66	Do	1	20
Kornell Jasper	18		all	Main	66		165	20
Kroner Jacob	16		"	Do	66		165	20
Hall Darr	9		N pt	Main				15
Same	10		S E.	Do	54		165	25
Lowless Flour Co.	12		all	Main	1282	RR	165	25
M ^{rs} Troy J. W.	15		all	Main	66		165	20
Reynor John	24		all	Main	66		165	20
Shute Christina	6		all	Main	66		165	20
Shute Henry	7		"	Do	66		165	20
Same V	8		"	Do	66	alley	165	20
Shute Ada Mary	4		"	Do	66		165	20
Shute Daniel E.	30		"	Do	66		165	20
State of Ohio								
Same S. F. Sterling	31		all	Main	66		165	20
Same E. F. L. Roebke			Warehouse					
Turner Frankline	10		N.W.	Main	12		165	
Same	11		all	Do	66		165	25
Turner Harrison	19		"	Do	66		165	20
Same	20		"	Do	66		165	20
Turner Harrison & Julia	23		N.W.	Do	46		108	10
Turner John	21		all	Do	66		165	20
Same	22		"	Do	40		132	20
Thompson Josephine M.	13		"	Do	29 04	RR	165	25
Same	14		"	Do	66		165	25
Same	28		"	Do	66	RR	165	25
Same	5		"	Do	66	alley	165	20

VALUE OF ALL BUILDINGS.			Total Value of Lots and Buildings.	Amount Added or Deducted by Co. Board of Equalization.		Total Value as Equalized by Co. Board.	Amount Added or Deducted by State Board of Equalization.		Total Value as Equalized by State Board.	REMARKS.
Houses.	Mills.	Other Buildings.		Added Dollars.	Deducted Dollars.		Added Dollars.	Deducted Dollars.		
			20							
			180			200				
			10			10				
			20			20				
300		100	420							
			20			20				
350			370							
			20			20				
			180			200				
150			170							
			15			365				
350		150	175							
			25			275				
			200							
			20			275				Land E. Suddell
155			175							
			20			20				
100			120							
			20			20				
			80			100				
100			100							
			200			225				
160			180							
			20			20				
			10			10				
100			120							
			20			20				
			25			25				
			25			25				
			25			25				
155			175							
3065		430	4120							

IN WHOSE NAME ASSESSED.	DESCRIPTION OF PROPERTY.							Value of Lots. Dollars.	
	No. of In-Lot.	No. of Out-Lot.	What Part.	Street.	Feet.	Street.	Feet.		
<i>Temple John M.</i>	<i>17</i>		<i>all</i>	<i>Main</i>	<i>66</i>	<i>alley</i>	<i>165</i>	<i>20</i>	
<i>Wright Jessie</i>	<i>23</i>		<i>pt</i>	<i>Main</i>	<i>102</i>		<i>50</i>	<i>165</i>	<i>20</i>
<i>Gardner Christian</i>	<i>25</i>		<i>all</i>	<i>Main</i>	<i>66</i>			<i>165</i>	<i>20</i>

VALUE OF ALL BUILDINGS.			Total Value of Lots and Buildings. Dollars.	Amount Added or Deducted by Co. Board of Equalization.		Total Value as Equalized by Co. Board. Dollars.	Amount Added or Deducted by State Board of Equalization.		Total Value as Equalized by State Board. Dollars.	REMARKS.
Houses. Dollars.	Mills. Dollars.	Other Buildings. Dollars.		Added Dollars.	Deducted Dollars.		Added Dollars.	Deducted Dollars.		
<i>100</i>			<i>120</i>							
<i>80</i>			<i>100</i>							
			<i>20</i>							

IN WHOSE NAME ASSESSED.	No. of In-Lot.	No. of Out-Lot.	DESCRIPTION OF PROPERTY.				Value of Lots. Dollars.	VALUE OF ALL BUILDINGS.			Total Value of Lots and Buildings. Dollars.	Amount Added or Deducted by Co. Board of Equalization.		Total Value as Equalized by Co. Board.	Amount Added or Deducted by State Board of Equalization.		Total Value as Equalized by State Board.	REMARKS.	
			What Part.	Street.	Feet.	Street.		Feet.	Houses. Dollars.	Mills. Dollars.		Other Buildings. Dollars.	Added Dollars.		Deducted Dollars.	Added Dollars.			Deducted Dollars.
Anthony David K.	15		all	Main	82.50	alley	132	30	120			150							
Baker Mary L.	3		1/2	Main	41.25		132	12	450			462							
Barley S. W.	11		all	Main	82.50	alley		30	70			100							
Bellmer Joseph L.	23		1/2	Main	62	lease	132	20	150			170							
Same	6		1/2	Do	65		28	5				5							
Boden Della M.	39		all	Raymond	50	alley	132	10	100			110							
Dague Henry	14		1/2	Main	77	alley	132	25	200	500		725							
Dabson William	21		all	Do	82.50	Do	132	25	100			120							
Dean Abbie A.	5		"	Do	82.50	Do	132	25	100			125							
Same	26		"	Do	82.50	Do	132	20	100			120							
Dague Henry	17		E.	Do	62	Do	132	25	475			500							
Fisher Alex	8		E.	Main	46.50		132	15	100	100		215							
Ham Flora M.	13		W.	Main	30		99	15	100			115							
Hess Bradford	13		"	Do	28		99	25		175		200							
Same (with Hess above)	13		"	Do	32		99												
Hartshorn John	16		N.E.	Do	17		99	10				10							Cyrus Baughin
Hartshorn J. C.	24		all	Do	82.50	Cross	132	20	125			145							
Henderson D. H.	16		7 3/4	Do	61.88	alley	132	25	225			250							
Johnson Albert F.	29		all	Skirtson	50		150	10				10							
Same	30		"	Do	55	alley	150	10				10							
Same	31		"	Do	50	Do	150	10		100		110							
Same	32		"	Do	50		150	10	250			260							
Same	33		"	Do	50		150	10				10							
K. Q. Lodge #657	14		Rt.	Main	8.50		60	5		500		505							
Knowlton E.	10		Rt.	Do	33.33	alley	132	15	135			150							
Lockwood Malinda M.	12		all	Main	82.50		132	25	325			350							Cyrus Baughin
Lockwood Oval.	38		"	Raymond	50		132	10				10							B. A. Lockwood
Mr. Henry J. W.	13		Send	Main	33	alley	82.50	5				5							
Mr. Henry J. W.	20		all	Do	82.50	Do	132	25				25							
								472		3125		1375							
												4972							

IN WHOSE NAME ASSESSED.	DESCRIPTION OF PROPERTY.							Value of Lots. Dollars.
	No. of In-Lot.	No. of Out-Lot.	What Part.	Street.	Feet.	Street.	Feet.	
Mulligan Sarah	16		E.	Main	20 62		132	20
Same	17		W	Do	20		132	20
Mulligan Sarah & William	34		all	Shurkeslar	50	alley	150	10
Same	35		"	Raymond	50		133 33	10
Same	36		"	Do	50		132	10
Same	37		"	Do	50		132	10
Same	40		"	Do	127 50	alley	49	10
Middleworth C. S.	1		"	Main	110		132	25
Myers Mrs	4		W ²	Main	41 25		132	12
Myers T. E.	7		E-	Do	41 25		132	12
Muller Benj. F.	43		all	Raymond	50		132	10
Same	44		"	Do	50		132	10
Newton Lodge #249 & a. m.								
Mulligan Mrs	8		W.	Main	20		132	10
O'Brien James	9		N.E.	Main	22 50		132	15
O'Brien Mary E.	9		W.	Do	25		132	15
Rhoads B. Y.	22		all	Main	82 50		132	25
Same	23		W.	Do	48	cross	132	20
Capt Rodney P. Amarine	2		all	Do	82 50		132	25
Sparks B. C.	6		W ²	Main	17 50	alley	132	25
Stratton Edwin & Jane	7		all	Do	82 50	Dayton	132	25
Sparks Berdie B.	9		W.	Do	9 50		132	10
Same	10		E.	Do	49 50		132	25
State of Ohio								
Same. J. W. Robinson	18		all	Main	82 50	Dayton	132	50
Titus Abingo	19		all	Main	82 50	alley	132	25
Walker Ellen	3		W ²	Main	41 50		132	12
Walker's N. W. & Hattie C.	8		W.	Do	16		132	10
Walker's D. F.	41		all	Raymond	50		132	10
Same	42		"	Do	50		132	10

VALUE OF ALL BUILDINGS.			Total Value of Lots and Buildings. Dollars.	Amount Added or Deducted by Co. Board of Equalization.		Total Value as Equalized by Co. Board. Dollars.	Amount Added or Deducted by State Board of Equalization.		Total Value as Equalized by State Board. Dollars.	REMARKS.
Houses. Dollars.	Mills. Dollars.	Other Buildings. Dollars.		Added Dollars.	Deducted Dollars.		Added Dollars.	Deducted Dollars.		
			20							
		400	420							Cyrus Baugh
			10							
			10							J. W. Lockwood
			10							
150			160							Fannie H. O'Brien
175			200							
100			112							
100			112							
			10							
			10							
		400	400							
100			110							Clara Ballinger
			115							
250			265							
			25							
450			470							
175			200							
		175	200							
200		100	325							
			10							
175			200							
100			150							
125			150							Wm Mulligan
250			262							
		150	160							R. P. Holland
			10							R. P. Holland
			10							
471			2450			1225				4176

**LIBERTY TP.
UNION COUNTY
1900**