

**ALLEN TP.
UNION COUNTY
1880**

10/

//

2669 ✓

2980

~~Case Personal W. 35~~
~~Marsh Alice G. 35~~
~~Wood Lullie A. 17~~
~~Wood James B. 58~~
~~Summ 26~~
~~Summ 66~~
~~Ward Maria 125 1/2~~

~~Melton James 80 1/2~~
~~Melton James 32 1/2~~

158

2833

2981

~~James James 78 3/4~~
~~Black Gold 78 3/4~~

~~Dawson & Clinic 46 5/8~~
~~Edwards W. H. 40~~

* OFFICE OF *

ANDREW S. MOWRY, C.E.

CIVIL ENGINEER, SURVEYOR AND ABTRACTER.

Office in Union County Court House P. O. Box 574.

Marysville, Ohio, 18__

150

paue road

Clark Shepherd
~~Summ~~

259

1

~~2~~
~~60 1/2~~
~~237 1/2~~
~~125~~
~~20~~

120 5/8

10 ✓

20 10

~~8071~~
~~3249~~

158

1502 ✓

~~Clark Shepherd 72.52~~
~~Sum 30~~

2875

2980 ✓

2598

1 137
642
822
34
856

2979 ✓

~~Howard Natta 3431~~
~~Sum 0.5 2463~~
~~Sum 10144~~

120
160) 360 } 2192
320
2400
160
400

3151

~~George Thomas 2~~
~~Smith Giddings 6013~~
~~Sum 23744~~
~~Smith Alexander 125~~
~~James J. M. 20~~

1205

Dollensburg

3151

3241

3742 ✓

Mr. Langer	25	
Armstrong Wilson	100	N
Long J. M.	1	
James	313	
Wm. Miller	2 2/3	
Religion. Se	1 2/3	

3681

3748

~~Hollingsworth~~
Holley, Mass

Price
Price

3152

3697 ✓

3749

3156

~~Anna Skin b. h.~~ ²⁵/₁₀₀
See Sudilov

3741 ✓

3752

3163

✓ 4606

4933

7772 ✓
~~Black Stephen~~

4610 ✓

5746 ✓

7822 ✓

~~Price Rebecca~~ $\frac{23}{100}$
~~Price John~~ $\frac{45}{100}$

~~Johnson Emily~~ 26 $\frac{25}{100}$
~~Milton Ellen~~ 27 $\frac{25}{100}$
~~Stewart Matilda~~ 40
~~Anna~~ 11
~~Stewart Jane~~ 25 $\frac{25}{100}$

~~Honora Nathan~~ 22 $\frac{25}{100}$

4812

6295

8565 ✓
~~Honora N.~~ 31 $\frac{25}{100}$

4880

7022

9796 ✓
~~Lincoln O. S.~~ 7 $\frac{00}{100}$

120817/12744

12/4 0.2

120424/1262

15509

12008

APPRAISER'S ACCOUNT.

TREASURY OF Senior COUNTY,

THE DATE OF EACH DAY	
Employed in making said Appraisalment was as follows:	
May day of 3	June day of 1
day of 5	day of 2
day of 7	day of 3
day of 10	day of 4
day of 12	day of 7
day of 14	day of 8
day of 17	day of 9
day of 19	day of 10
day of 21	day of 11
day of 24	day of 14
day of 25	day of 15
day of 26	day of 16
day of 27	day of 17
day of 28	day of 21
day of 29	day of 22
day of 31	July day of 1
day of	day of 2
day of	day of 5
day of	day of 6

ODD & MAYR, Blank Book Manufacturers, Stationers and Legal Book Publishers, Dayton, Ohio.

To N. Howard Land Appraiser of Allen Township, Dr.

For services rendered in appraising the Real Estate of said Township, for the year 1880 occupying 35 days, between the 3^d day of May and the 6th day of July at \$2⁰⁰ per day, \$70⁰⁰
 And the said N. Howard being duly sworn, solemnly declares that the number of days herein stated, were necessarily occupied in the appraisalment of said Township, and that this account is in all respects just and true.

(Signed).

Nathan Howard Appraiser.

Sworn to and subscribed before me, this 28th day of July 1880

(Signed).

J. W. L. Leary Auditor of said County.

Received, July 28th 1880 of the Auditor of Senior County, an order on the Treasurer of said County, for Seventy Dollars, 00 Cents, in full of the above account.

(Signed).

\$70⁰⁰ Nathan Howard Appraiser.

APPRAISER'S OATH.



State of Ohio, Lenix County, ss.

I, Nathan Howard Land Appraiser for
Allen Township, in the County of Lenix and State of Ohio, do solemnly
swear that the return to which this is attached contains a correct description of each parcel of Real Property within said
district, as far as I have been able to ascertain the same, and that the value attached to each parcel in said return is,
as I verily believe, the full value thereof. Estimated agreeably to the rules prescribed therefor in the act for levying
taxes on all property of this State, according to its true value.

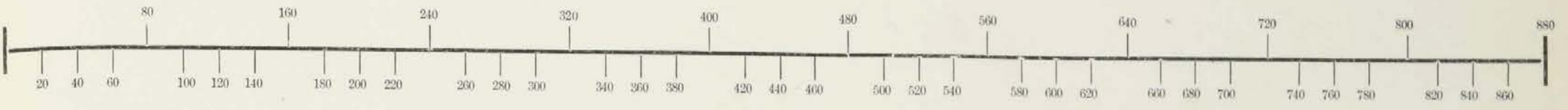
Signed, Nathan Howard
APPRAISER OF SAID TOWNSHIP.

Sworn and subscribed to before me, the undersigned authority, this

28th day of July A. D. 1880

Signed, W. L. Curry
AUDITOR OF SAID COUNTY.

Scale, 80 Poles to an Inch.

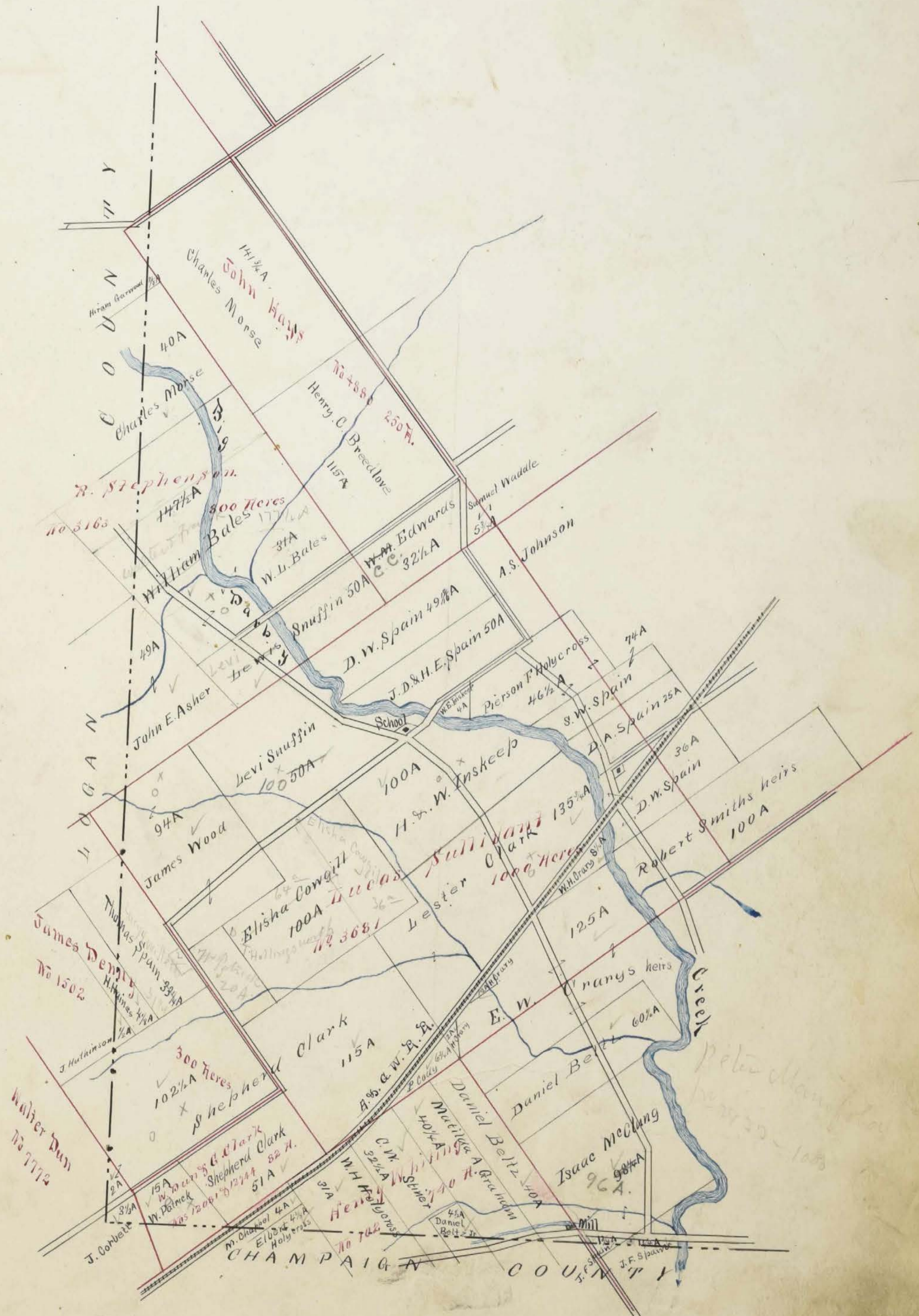


Index

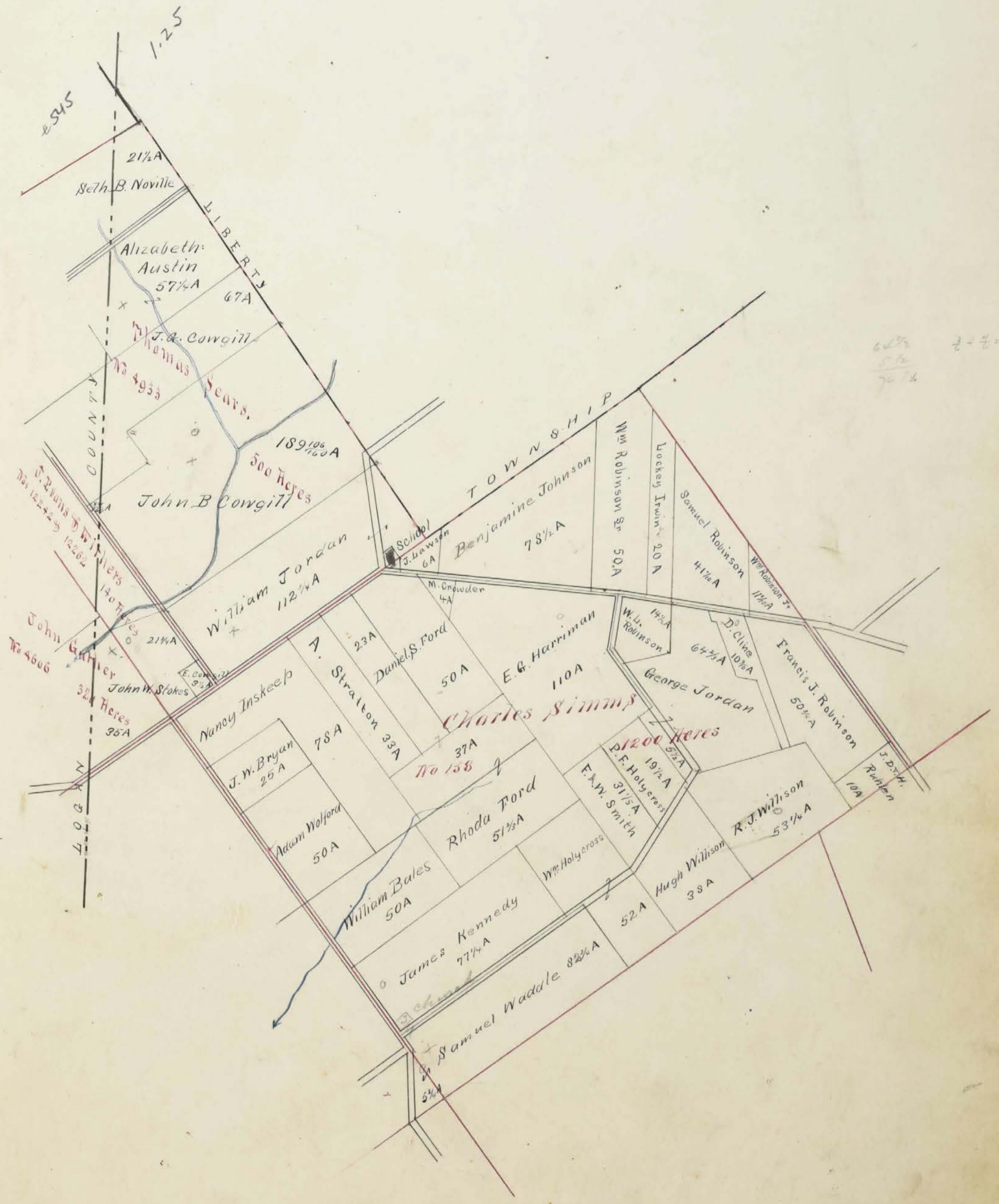
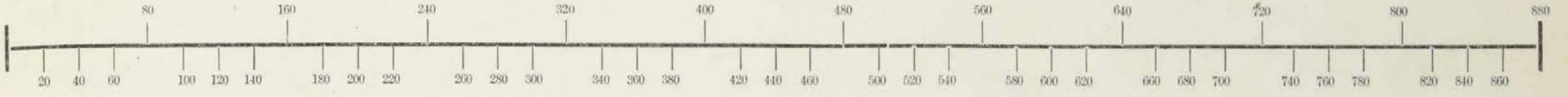
Survey No.	Page No.
102	2
158	3
1502	2
2598	8
2669	7
2833	4
2875	8
2979	9
2980	7
2981	7
2983	10
3151	5
3152	8
3156	8
3163	2
3241	8
3681	2
3697	10
3741	10
3742	10
3748	8
3749	4
3752	8
4606	3
4610	10
4812	8
4880	2
4933	3
5746	10
6295	10
7022	6
7772	2 <i>no plan</i>
7822	9
8565	9
9796	9
12051	2
12744	
12242	3
12262	
12308	5
14602	6
15309	6

9796

Scale, 80 Poles to an Inch.

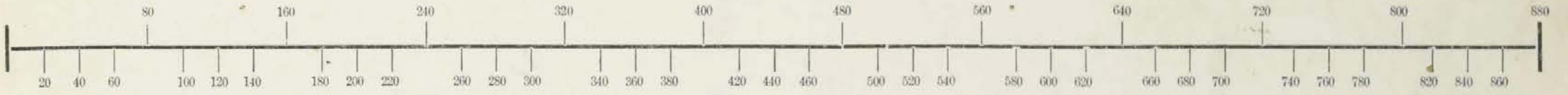


Scale, 80 Poles to an Inch.

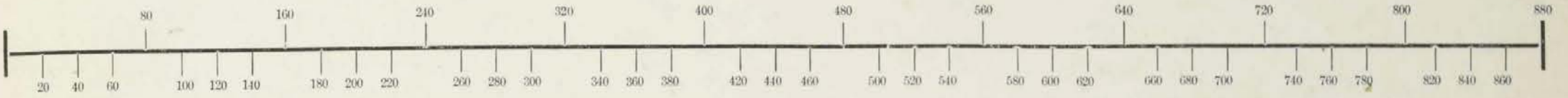


Handwritten notes: 600, 50, 70 1/2

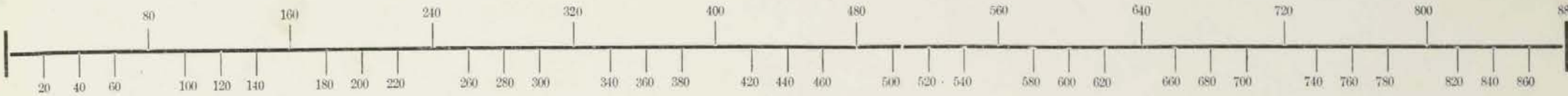
Scale, 80 Poles to an Inch.



Scale, 80 Poles to an Inch.



Scale, 80 Poles to an Inch.

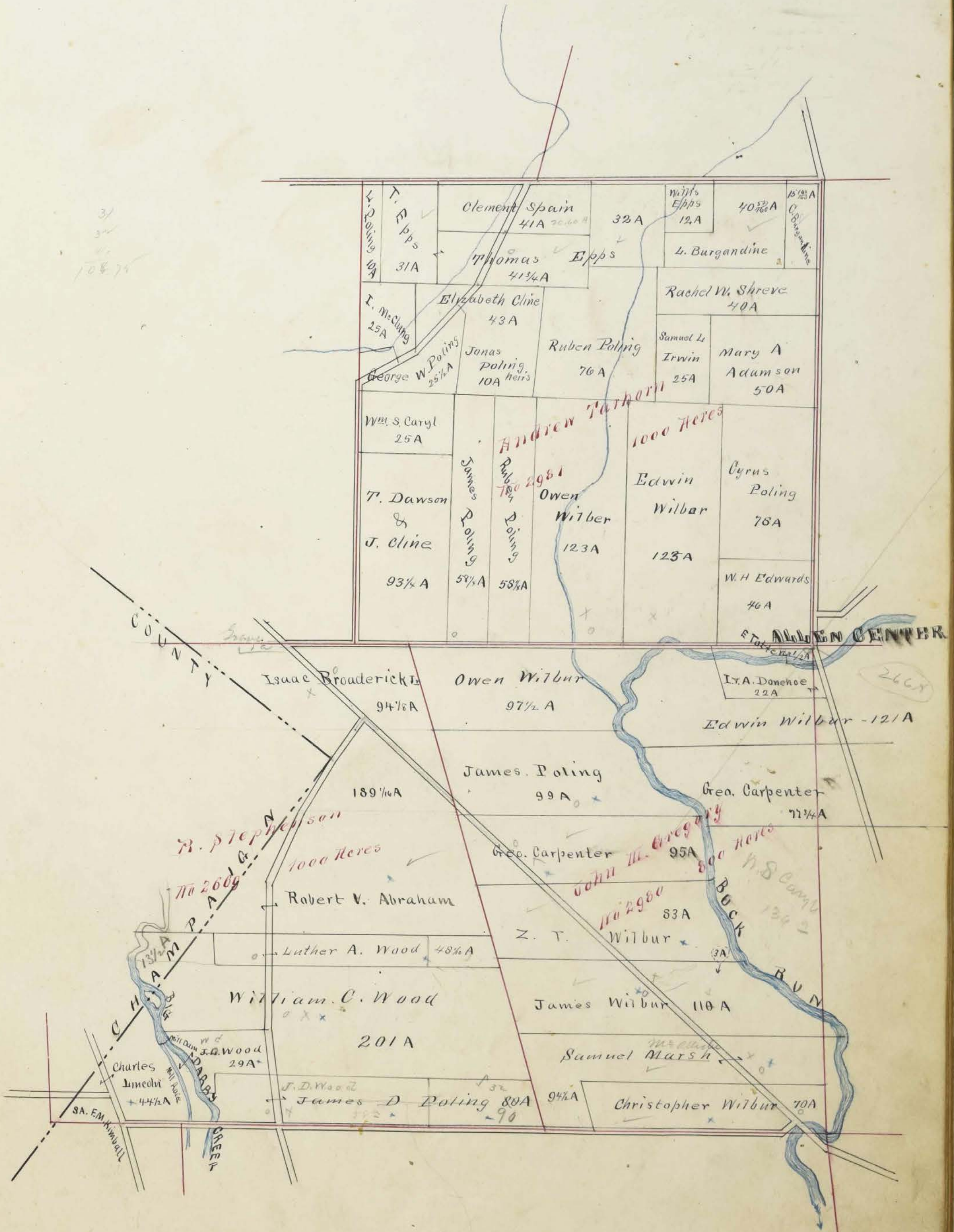
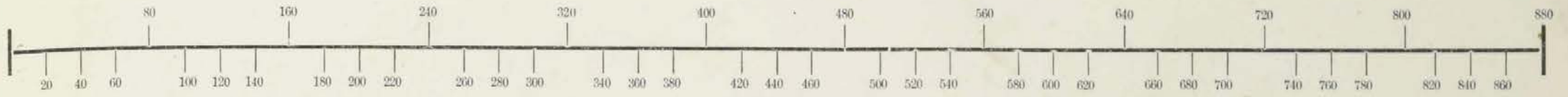


Wolfen
 6 + 44 250 in 15309
 1 in 12308

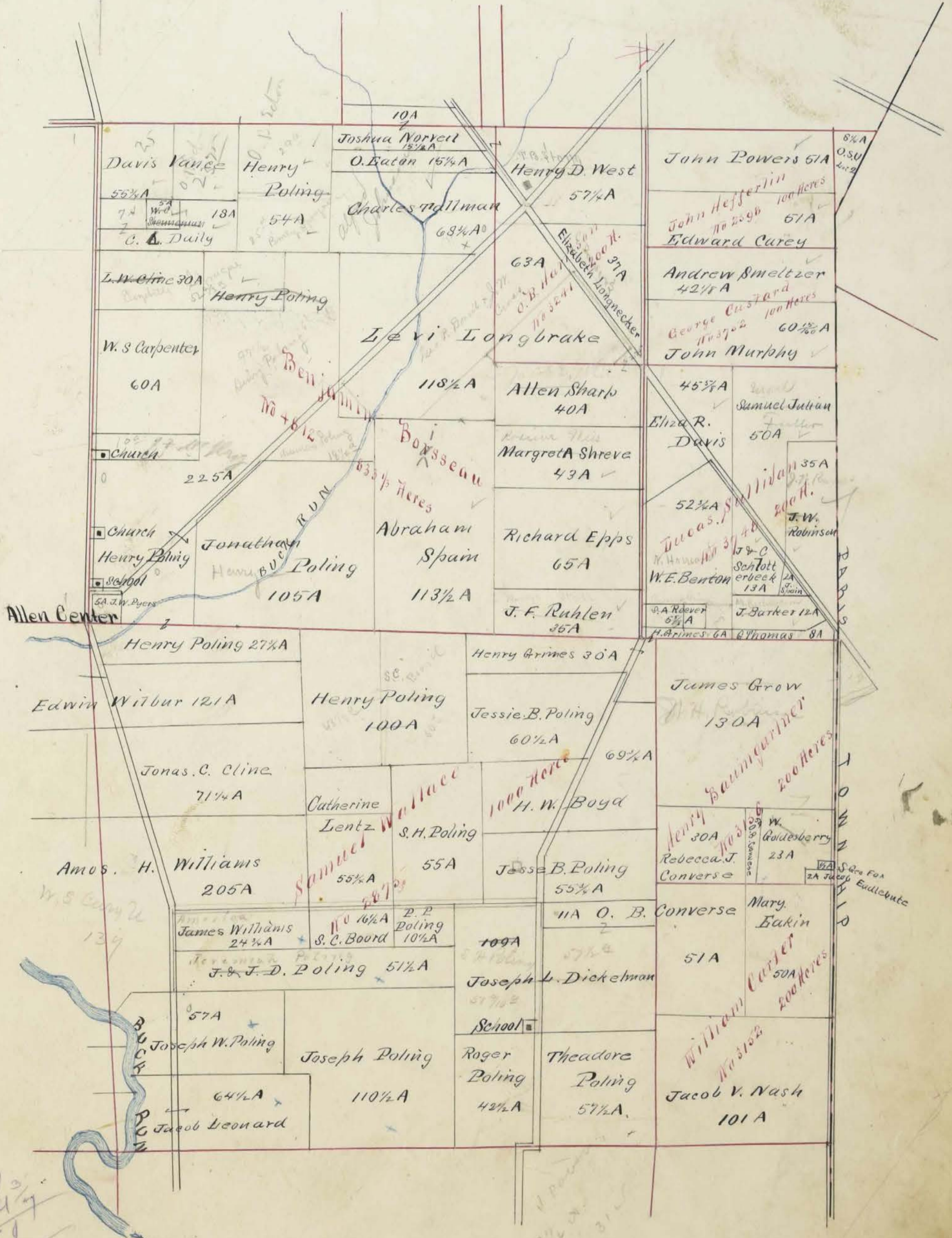
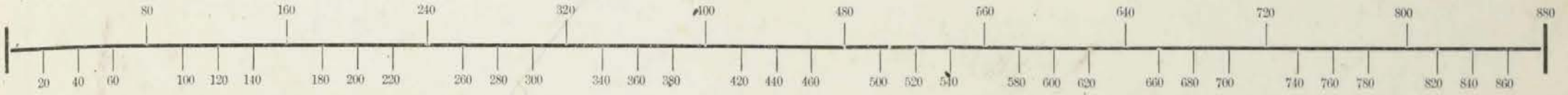
North Lewisburg
 Clipping co o James K Graham
 3440
 334A

22 1/2
 3 1/2
 14 5/8

Scale, 80 Poles to an Inch.



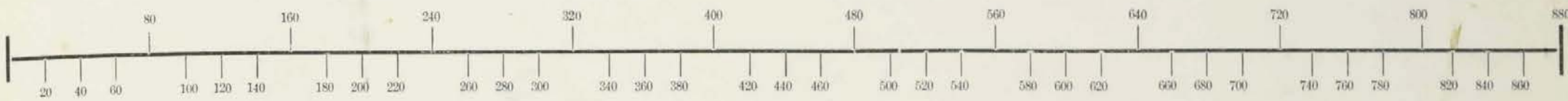
Scale, 80 Poles to an Inch.



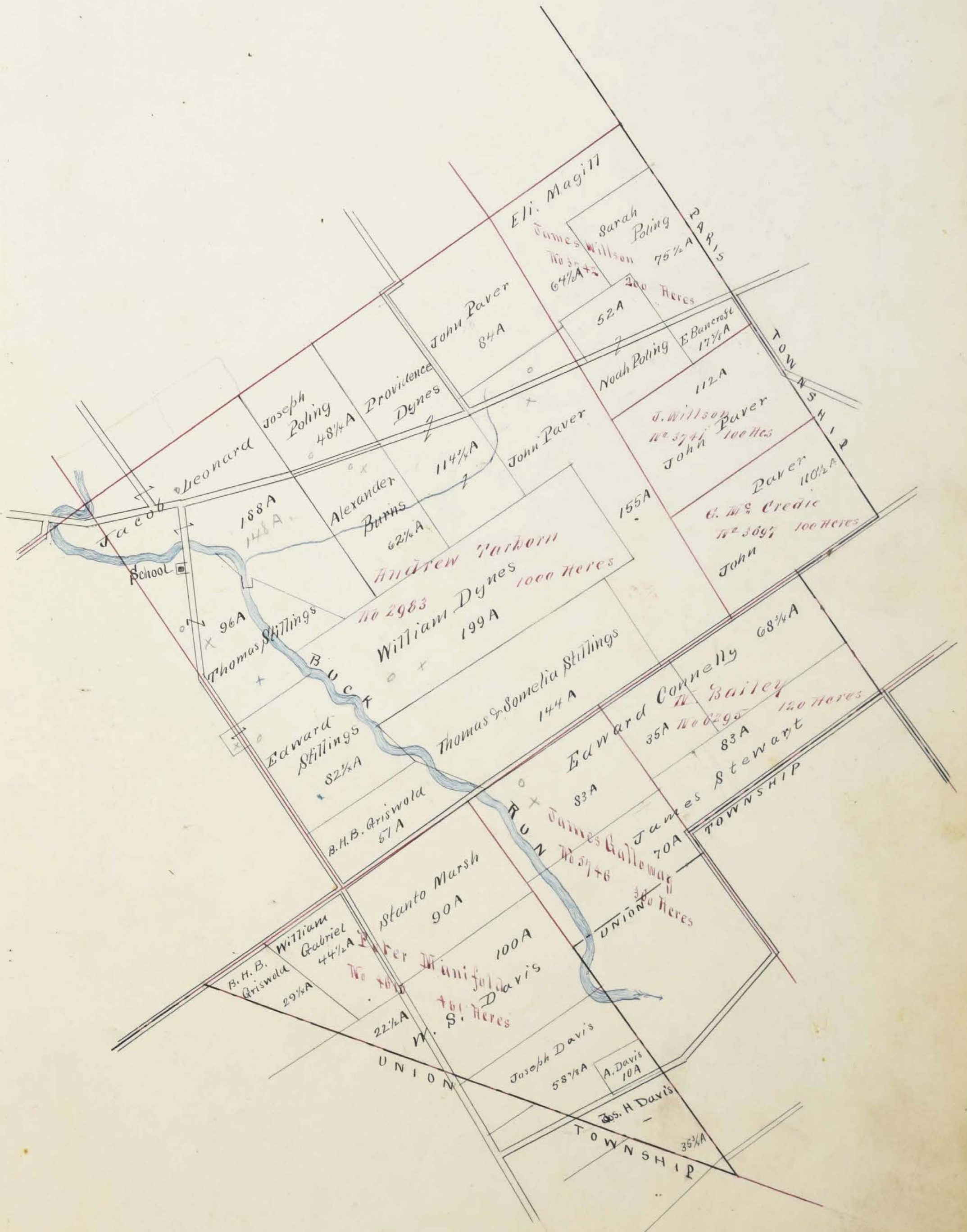
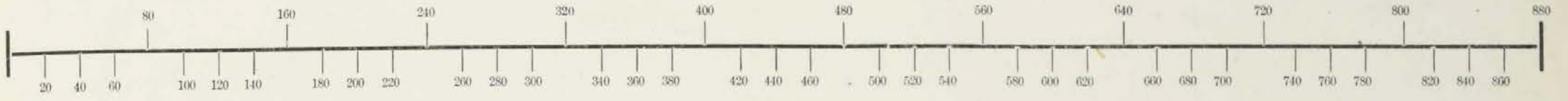
Handwritten calculations in the bottom left corner:
270
247
51
51
102 1/2

Scale

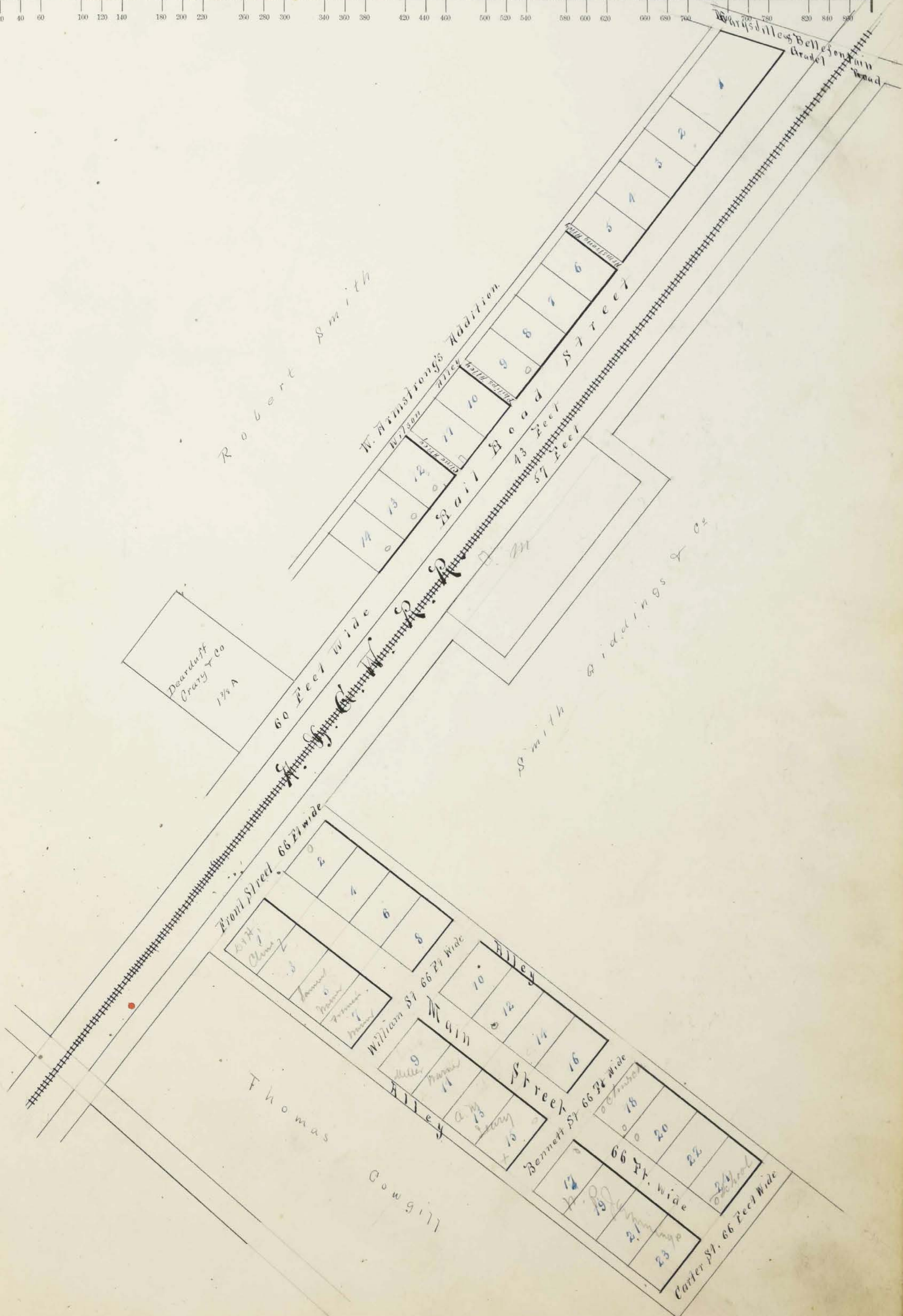
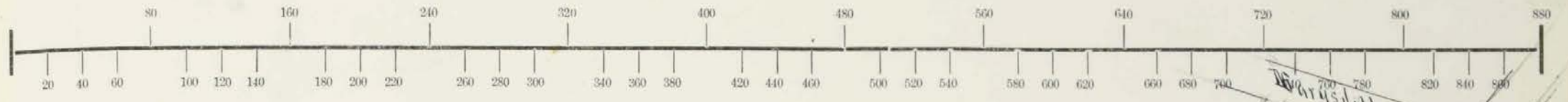
Scale, 80 Poles to an Inch.



Scale, 80 Poles to an Inch.



Scale, 10 Poles to an Inch.



Assessment of Real Property in *Allen* Township,

Union County, Ohio, for the Year 1880.

For Plats of Lands see Page	DESCRIPTION OF PROPERTY				No. of Acres of Land Classified.				Whole No. of Acres.	Value per Acre, including Buildings.	Total Value of Lands, excluding Buildings.	Value of all Buildings.			Total Value of Lands and Buildings.	Amount Added or Deducted by Co. Board of Equalization.		Total Value as Equalized by Co. Board.	Amount Added or Deducted by State Board of Equalization.		Total Value as Equalized by State Board.	REMARKS.		
					Arable and Plow Land.		Meadow and Pasture Land.					Uncultivated and Wood Land.		Houses.		Mills.	Other Buildings.		Added Dollars.	Deducted Dollars.			Added Dollars.	Deducted Dollars.
					Acres.	H.	Acres.	H.				Acres.	H.											
Asher John E.	3163	500	R. Stephenson	Darby Creek	20	29			49	35	1715			1715			1715	142	1573					
Abraham R. V.	2669	1000	"	"	98	125 1/2	66		189 1/2	26	4916	450	200	5566			5566	462	5704					
Austin Elizabeth	4933	500	Thomas Sears	"	10	47 1/4			37 3/4	24	1374		100	1474			1474	122	1352					
Hemstony Wilson	3151	1000	Melican Carter	Darby Creek	7		4 1/2		11 1/2	18	207			207			207	17	190					
Hickson Mary A.	2981		W. Jackson	"	26	10	14		30	20	1000			1000			1000	83	917	all to Cyrus P. King				
Bela William	3163	500	R. Stephenson	Darby Creek	60	93	47 1/2		200 1/2	35	7017	500	200	7717			7717	641	7079	Belas look up maps				
Sam	158	1200	C. Simms	"	30		21		50	20	1000			1000			1000	83	917	all to Mather & Frank Bates				
Baudette Henry C.	4880	250	John Keys	"	25	20	70		115	20	2300			2300			2300	191	2109	all to S. B. Bauman				
Bela William L.	3163	500	R. Stephenson	"	25	6			31	30	930			930			930	77	853	all to Mather & Frank Bates				
Brodnick James J.	2669	1000	R. Stephenson	Darby Creek		70	24		94	25	2350	300	100	2750			2750	228	2522					
Betty Saml	2833	1000	P. Mansfield	"	8 1/2	22	30		60 1/2	32	1936			1936			1936	161	1775					
Sam	102	740	H. Whiting	"	30		10		40	35	1400	410	100	2000			2000	166	1834					
Burke Charles W.	7022	500 1/2	R. Haggan	"	40		32		72	18	1296			1296			1296	108	1188					
Bryan J. W.	158	1200	Charles Simms	"	6	9	10		25	20	500			500			500	42	458					
Burgess Robert	2981	1000	C. Jackson	Darby Creek	7 1/2	8			15 1/2	18	278	100	100	478			478	40	438					
Betty Saml J.	102	740	H. Whiting	"	1 1/2	3			4 1/2	30	135			135			135	11	124					
Brown Samuel L.	2875	1000	Samuel Wallace	"		16 1/4			16 1/4	18	292	400		692			692	57	635	Samuel C. Brown				
Boyd W. W.			"	"	34	5 3/4	30		69 3/4	17	1186			1186			1186	98	1088					
Betty Fredrick	3749	600	James Coleman	"	28	10	6		44	18	792	100		892			892	74	818					
Bancroft Eliza	3742	200	J. Wilson	Darby Creek	7		10 3/4		17 3/4	20	353			353			353	29	324					
Banough Patricia W.	2833	1000	P. Mansfield	"	10		10		20	18	360			360			360	30	330					
Baker William E.	3748	200	L. Sullivan	"	25	27 3/4			52 3/4	18	950			950			950	79	871					
Baker John			"	"		10	2		12	18	216			216			216	18	198					
Burns Alexander	2983	1000	C. Jackson	Darby Creek	30 1/4	26	6		62 1/4	25	1556	250	150	1956			1956	162	1794					
Burgantine L.	2981	100	"	"	20 5/8	15	5		40 5/8	20	807			807			807	67	740					
Clark Stephen	12704	82	Wm. Clark	Darby Creek	11	40			51	38	1938			1938			1938	161	2177					
Sam	3681	1000	L. Sullivan	"	50	50	15		115	38	4370			4370			4370	363	4007	He says 114 acres.				
Sam	1402	300	J. Keyes	"	40	37 1/2	25		102 1/2	40	4100	2000	150	6250			6250	519	5731					
Sam	7772	1000	L. Sullivan	"		2			2	40	80			80			80	7	73					
Cary E. W. (Heir)	2833	2000	Mansfield & Sullivan	"	61	44	20		125	38	4750	350	100	5200			5200	432	4768					
Cary Samuel	3681	1000	L. Sullivan	Darby Creek		4			4	30	120			120			120	10	110					
Cary W. H.			"	"	8 1/2				8 1/2	30	255			255			255	21	234					
Chin David	158	1200	C. Simms	"	4	6 3/10			10 3/10	20	206	175		381			381	32	349					
Cozzit Eliza	3681	1000	L. Sullivan	"	74	18	8		100	40	4000	300	150	4450			4450	369	4081	See to S. J. Hollingsworth				
Sam	12262	140	Wicks & Others	Darby Creek					3 1/2	20	70			70			70	6	64	See to John M. Stokes				
Chin James	3751	1000	William Clark	"	12	8 1/4	6		26 1/4	20	525			525			525	44	481					
Chin James L.	2875		S. Wallace	"	30	35 1/4	6		71 1/4	20	1425	150		1575			1575	131	1444					
					839 17/32	698 29/30	477 1/8		2019 1/32	56705	5475	100	1350	63620			63630	5283	58347					

Assessment of Real Property in Township,

Union County, Ohio, for the Year 1880.

For Plats of Lands see Page	DESCRIPTION OF PROPERTY					No. of Acres of Land Classified.						Whole No. of Acres.	Value per Acre excluding Buildings.	Total Value of Lands, excluding Buildings.	Value of all Buildings.			Total Value of Lands and Buildings.	Amount Added or Deducted by Co. Board of Equalization.		Total Value as Equalized by Co. Board.	Amount Added or Deducted by State Board of Equalization.		Total Value as Equalized by State Board.	REMARKS.
	IN WHOSE NAME ASSESSED.	No. of Entry.	Original Quantity.	Original Proprietor.	Water Course.	Arable and Plow Land.		Meadow and Pasture Land.		Uncultivated and Wood Land.					Houses.	Mills.	Other Buildings.		Added Dollars.	Deducted Dollars.		Added Dollars.	Deducted Dollars.		
						Acres.	H.	Acres.	H.	Acres.	H.														
	Carpenter George	2980	200	J.M. Croy	Slaty bank	10		70		15				95	25	2375	500		200	3075	5075	255	2520		
	Same	2981	1500	Walter Croy	"	30		37 3/4		10				72 3/4	22	1711				1711	1711	142	1569		
	Clark John	2772	1000	L. Sallwant	"	4								4	40	160				160	160	13	147	3 1/3 acres on the map	
	Co. Phillip	2929	1300	"	"	70		52		50				172	30	5160				5160	5160	428	4732		
	Same	9776	700	W. Ann	Slaty bank			60		1 1/2				61 3/4	30	1853				1853	1853	154	1699		
	Co. Mary	2929	1300	L. Sallwant	"	33		62						78	35	3325	400		750	4475	4475	371	4104		
	Brooks William	19308	1000	W. Vance	"	20		20		20				60	16	960				960	960	80	880		
	White S.B.	2779	1300	L. Sallwant	Slaty bank	5		6 1/2						11 1/2	25	288	100	300	100	788	788	60	728		
	White Elizabeth	2981	1000	A. Sallwant	"	21		10		12				43	20	860				860	860	71	789		
	Congress John D.	4933	500	Thos. Gray	"	83		57		57				190	24	4560	350		200	5110	5110	424	4686	all to Andrew M. M. Cramer	
	Congress Jonathan P.	"	"	"	"	30		37						67	24	1608			100	1708	1708	142	1566		
	Connelly Edward	5746	480	Callaway Bailey	Slaty bank	40		38		40				118	24	2832	200		150	3182	3182	264	2918		
	Same	6275	120	J. Bailey	"	20		28 3/4		20				68 3/4	20	1375				1375	1375	114	1261		
	Co. Edward	2929	100	J. H. Hoffman	"	32		13		6				51	16	816				816	816	68	748		
	Combs Rebecca	3156	200	H. Bungeathis	"			10		20				30	16	480				480	480	40	440		
	Co. Patrick	3681	1000	L. Sallwant	Slaty bank	6 3/4								6 3/4	30	203				203	203	17	186		
	Co. Melissa	102	740	H. Whiting	"			4						4	30	120				120	120	10	110		
	Co. John P.	12308	1000	W. Vance	"	15		30		15				60	16	960				960	960	80	880	see to William Brooks	
	Clark Lester	3681	"	L. Sallwant	Slaty bank	68		32 3/4		35				138 3/4	40	5430	600		200	6230	6230	517	5713		
	Clark Susan	2933	1000	L. Sallwant	"	30				40 1/2				70 1/2	30	2115	700			2815	2815	234	2581		
	Clark Henry C.	"	"	"	"	76		66 1/4		100				242 1/4	28	5790	350		300	6440	6440	535	5905		
	Clark Sarah	"	"	"	"	45		8		25				78	30	2340				2340	2340	194	2146		
	Carpenter M.S.	4812	833 1/3	P. Boissac	Slaty bank	21		24		15				60	22	1320				1320	1320	110	1210		
	Co. Mahala	158	1200	Charles Simms	"			4						4	20	80				80	80	7	73		
	Congill Thomas	12308	1000	W. Vance	"	130		94		10				254	16	4060	100			4164	4164	346	3818		
	Same	3157	"	W. Carter	"	8		10 1/2		15				30 1/2	18	549				549	549	46	503		
	Same	"	"	"	"	6		5 1/2						11 1/2	25	288				288	288	24	264	3 1/2 to Andrew Palmer	
	Co. O.B.	3156	200	H. Bungeathis	Slaty bank					5				5	17	85				85	85	7	78		
	Same	3152	200	William Carter	"	16		15		20				51	17	867				867	867	72	795		
	Same	2975	1000	L. Sallwant	"	6		5						11	20	220	150			370	370	31	339		
	Cummings Joseph D.	3157	"	W. Carter	"	25				5				30	20	600				600	600	50	550		
	Co. Wm. S.	2981	1000	A. Sallwant	"			25		3 1/2				28 1/2	20	570				570	570	47	523		
	Co. Peter D.	4812	833 1/3	P. Boissac	"	15		15						30	20	600				600	600	50	550		

Assessment of Real Property in *Allen* Township,

Union County, Ohio, for the Year 1880.

For Plats of Lands see Page	DESCRIPTION OF PROPERTY				No. of Acres of Land Classified.			Whole No. of Acres.	Value per Acre, including buildings.	Total Value of Lands, excluding Buildings.	Value of all Buildings.			Total Value of Lands and Buildings.	Amount Added or Deducted by Co. Board of Equalization.		Total Value as Equalized by Co. Board.	Amount Added or Deducted by State Board of Equalization.		Total Value as Equalized by State Board.	REMARKS.			
	IN WHOSE NAME ASSESSED.	No. of Entry.	Original Quantity.	Original Proprietor.	Water Course.	Arable and Plow Land.					Meadow and Pasture Land.		Uncultivated and Wood Land.		Houses.	Mills.		Other Buildings.	Added Dollars.			Deducted Dollars.	Added Dollars.	Deducted Dollars.
						Acres.	H.				Acres.	H.												
	<i>Lynn William</i>	<i>2983</i>	<i>1000</i>	<i>A. Taborum</i>	<i>Dartysburg</i>	<i>60</i>	<i>99</i>	<i>40</i>			<i>199</i>	<i>20</i>	<i>3980</i>	<i>200</i>		<i>100</i>	<i>4280</i>			<i>4280</i>	<i>355</i>	<i>3925</i>		
	<i>Lynn Providence</i>			"	"	<i>44</i>	<i>75 3/4</i>	<i>25</i>			<i>114 3/4</i>	<i>20</i>	<i>2895</i>	<i>100</i>			<i>2995</i>			<i>2995</i>	<i>249</i>	<i>2746</i>		
	<i>Lewis Joseph</i>	<i>4610</i>	<i>481</i>	<i>P. Mansford</i>	"	<i>27</i>	<i>17 7/8</i>	<i>14</i>			<i>58 7/8</i>	<i>22</i>	<i>1295</i>				<i>1295</i>			<i>1295</i>	<i>107</i>	<i>1188</i>		
	<i>Lewis Charles</i>			"	"	<i>4</i>	<i>6</i>				<i>10</i>	<i>22</i>	<i>220</i>				<i>220</i>			<i>220</i>	<i>18</i>	<i>202</i>		
	<i>Lewis H. S.</i>			"	"	<i>30</i>	<i>20</i>	<i>72 1/2</i>			<i>132 1/2</i>	<i>22</i>	<i>2695</i>				<i>2695</i>			<i>2695</i>	<i>284</i>	<i>2471</i>		
	<i>Lewis Joseph H.</i>			"	<i>Dartysburg</i>			<i>35 3/4</i>			<i>85 3/4</i>	<i>20</i>	<i>715</i>				<i>715</i>			<i>715</i>	<i>59</i>	<i>656</i>		
	<i>Donahue & Manner</i>	<i>3249</i>	<i>600</i>	<i>J. Godeman</i>	"	<i>20</i>	<i>5</i>				<i>25</i>	<i>16</i>	<i>400</i>				<i>400</i>			<i>400</i>	<i>33</i>	<i>367</i>		
	<i>Donahue Thomas</i>			"	"		<i>5</i>				<i>5</i>	<i>18</i>	<i>90</i>				<i>90</i>			<i>90</i>	<i>7</i>	<i>83</i>		
	<i>Same</i>	<i>3151</i>	<i>200</i>	<i>William Carter</i>	"		<i>2</i>				<i>2</i>	<i>18</i>	<i>36</i>				<i>36</i>			<i>36</i>	<i>3</i>	<i>33</i>		
	<i>Dickman Joseph L.</i>	<i>2875</i>	<i>1000</i>	<i>S. Wallace</i>	<i>Dartysburg</i>	<i>29</i>	<i>50</i>	<i>30</i>			<i>109</i>	<i>18</i>	<i>1962</i>				<i>1962</i>			<i>1962</i>	<i>163</i>	<i>1799</i>	<i>57 1/2 S. H. Poling</i>	
	<i>Lewis on Wm. & Josephine Lewis</i>	<i>2981</i>		<i>A. Taborum</i>	"	<i>24</i>	<i>44 1/4</i>	<i>23</i>			<i>98 1/4</i>	<i>23</i>	<i>2145</i>				<i>2145</i>			<i>2145</i>	<i>178</i>	<i>1967</i>	<i>57 1/2 S. H. Poling</i>	
	<i>Dunduff & Conroy</i>	<i>3151</i>	<i>1000</i>	<i>William Carter</i>	"						<i>1 3/4</i>	<i>22</i>	<i>30</i>		<i>100</i>		<i>130</i>			<i>130</i>	<i>11</i>	<i>119</i>	<i>File lot</i>	
	<i>Dunduff Saml</i>			"	"		<i>5</i>	<i>15</i>			<i>20</i>	<i>20</i>	<i>400</i>				<i>400</i>			<i>400</i>	<i>33</i>	<i>367</i>	<i>File to Paschal Spain</i>	
	<i>Daily Catharine L.</i>	<i>4812</i>	<i>833 1/2</i>	<i>B. Boissau</i>	"	<i>9</i>		<i>9</i>			<i>18</i>	<i>18</i>	<i>324</i>	<i>100</i>			<i>424</i>			<i>424</i>	<i>35</i>	<i>389</i>		
	<i>Lewis Eliza D.</i>	<i>3248</i>	<i>200</i>	<i>L. Sussant</i>	"	<i>20</i>	<i>25 3/8</i>				<i>48 3/8</i>	<i>18</i>	<i>721</i>	<i>100</i>			<i>921</i>			<i>921</i>	<i>76</i>	<i>845</i>		
	<i>Donahue Mrs. Anna</i>	<i>2871-2880</i>	<i>1800</i>	<i>Wallace & Conroy</i>	<i>Dartysburg</i>	<i>22</i>					<i>22</i>	<i>25</i>	<i>550</i>				<i>550</i>			<i>550</i>	<i>46</i>	<i>504</i>		
	<i>Dunduff F. M.</i>	<i>3151</i>	<i>1000</i>	<i>Wm. Carter</i>	"	<i>5</i>		<i>15</i>			<i>20</i>	<i>20</i>	<i>400</i>				<i>400</i>			<i>400</i>	<i>33</i>	<i>367</i>		
	<i>Epps Richard</i>	<i>4812</i>	<i>833 1/2</i>	<i>B. Boissau</i>	<i>Dartysburg</i>	<i>26</i>	<i>29</i>	<i>10</i>			<i>65</i>	<i>17</i>	<i>1105</i>				<i>1105</i>			<i>1105</i>	<i>92</i>	<i>1013</i>		
	<i>Easton Delbert</i>			"	"	<i>10</i>	<i>5 1/4</i>				<i>15 1/4</i>	<i>18</i>	<i>275</i>				<i>275</i>			<i>275</i>	<i>23</i>	<i>252</i>	<i>File to B. Stone</i>	
	<i>Epps Thomas</i>	<i>2981</i>	<i>1000</i>	<i>A. Taborum</i>	"	<i>78</i>	<i>11 3/4</i>	<i>15</i>			<i>104 3/4</i>	<i>20</i>	<i>2095</i>		<i>100</i>		<i>2195</i>			<i>2195</i>	<i>182</i>	<i>2013</i>		
	<i>Excelsior Wm. M.</i>	<i>4880</i>	<i>250</i>	<i>John H. Eys</i>	"	<i>15</i>	<i>17 1/2</i>				<i>32 1/2</i>	<i>18</i>	<i>585</i>				<i>585</i>			<i>585</i>	<i>49</i>	<i>536</i>	<i>File to Chas. L. Edwards</i>	
	<i>Epps Miles</i>	<i>2981</i>	<i>1000</i>	<i>A. Taborum</i>	<i>Dartysburg</i>	<i>3</i>	<i>2</i>				<i>5</i>	<i>20</i>	<i>100</i>	<i>100</i>			<i>200</i>			<i>200</i>	<i>17</i>	<i>183</i>	<i>Should be 72 more</i>	
	<i>Same</i>	<i>3151</i>		<i>William Carter</i>	"	<i>39</i>	<i>6</i>	<i>15</i>			<i>60</i>	<i>18</i>	<i>1080</i>				<i>1080</i>			<i>1080</i>	<i>90</i>	<i>990</i>		
	<i>Excelsior W. M.</i>	<i>2981</i>	<i>1000</i>	<i>A. Taborum</i>	"	<i>17</i>	<i>24</i>	<i>5</i>			<i>46</i>	<i>20</i>	<i>920</i>				<i>920</i>			<i>920</i>	<i>76</i>	<i>844</i>		
	<i>Eakin May</i>	<i>3152</i>	<i>200</i>	<i>William Carter</i>	<i>Dartysburg</i>	<i>12</i>	<i>6</i>	<i>12</i>			<i>30</i>	<i>17</i>	<i>510</i>				<i>510</i>			<i>510</i>	<i>43</i>	<i>468</i>		
	<i>Same</i>			"	"	<i>8</i>		<i>12</i>			<i>20</i>	<i>17</i>	<i>340</i>				<i>340</i>			<i>340</i>	<i>28</i>	<i>312</i>		
	<i>Earlbert Jacob</i>	<i>3156</i>	<i>200</i>	<i>H. Bunnagum</i>	"		<i>2</i>				<i>2</i>	<i>17</i>	<i>34</i>				<i>34</i>			<i>34</i>	<i>3</i>	<i>31</i>		
	<i>Daily James E.</i>	<i>2777</i>	<i>1800</i>	<i>L. Sussant</i>	<i>Dartysburg</i>	<i>48</i>	<i>43 1/2</i>	<i>10</i>			<i>101 1/2</i>	<i>24</i>	<i>2435</i>	<i>125</i>		<i>200</i>	<i>2760</i>			<i>2760</i>	<i>229</i>	<i>2531</i>		
	<i>Ford David S.</i>	<i>158</i>	<i>1200</i>	<i>Charles Simms</i>	"	<i>10</i>	<i>13</i>				<i>23</i>	<i>20</i>	<i>460</i>				<i>460</i>			<i>460</i>	<i>38</i>	<i>422</i>		
	<i>Same</i>			"	"	<i>15</i>	<i>20</i>	<i>15</i>			<i>50</i>	<i>20</i>	<i>1000</i>				<i>1000</i>			<i>1000</i>	<i>83</i>	<i>917</i>		
	<i>Ford Rhoda</i>	<i>158</i>	<i>1200</i>	<i>Charles Simms</i>	<i>Dartysburg</i>	<i>20</i>	<i>11 2/3</i>	<i>20</i>			<i>51 2/3</i>	<i>18</i>	<i>930</i>				<i>930</i>			<i>930</i>	<i>77</i>	<i>853</i>		
	<i>Same</i>			"	"	<i>10</i>	<i>17</i>	<i>10</i>			<i>37</i>	<i>20</i>	<i>740</i>				<i>740</i>			<i>740</i>	<i>61</i>	<i>679</i>		
	<i>Ford George</i>	<i>3156</i>	<i>200</i>	<i>H. Bunnagum</i>	"		<i>1/3</i>				<i>1/3</i>	<i>15</i>	<i>6</i>				<i>6</i>			<i>6</i>	<i>1</i>	<i>5</i>	<i>File Charles L. Eakin</i>	
						<i>605</i>	<i>564 1/2</i>	<i>405 1/4</i>			<i>1345 3/4</i>		<i>31473</i>	<i>725</i>	<i>600</i>	<i>32788</i>	<i>32798</i>			<i>2921</i>	<i>30077</i>			

Assessment of Real Property in *Allen* Township,

Union County, Ohio, for the Year 1880.

For Plats of Lands see Page	DESCRIPTION OF PROPERTY					No. of Acres of Land Classified.						Whole No. of Acres.	Value per Acre, excluding Buildings.	Total Value of Lands, excluding Buildings.	Value of all Buildings.			Total Value of Lands and Buildings.	Amount Added or Deducted by Co. Board of Equalization.		Total Value as Equalized by Co. Board.	Amount Added or Deducted by State Board of Equalization.		Total Value as Equalized by State Board.	REMARKS.
						Arable and Plow Land.		Meadow and Pasture Land.		Uncultivated and Wood Land.					Houses.	Mills.	Other Buildings.		Added Dollars.	Deducted Dollars.		Added Dollars.	Deducted Dollars.		
	Acres.	H.	Acres.	H.	Acres.	H.	Dollars.	Dollars.	Dollars.	Dollars.	Dollars.														
✓	Robert Elizabeth	2979	1300	L. Sullivan	Duty lands	71	12 1/2	15				98 1/2	33	3251			3251			5207	270	2981			
	Chatham Matilda A	102	740	H. Whiting	"	30	10 1/4					40 1/4	37	1489	400	300	2189			2189	182	2007			
	Robert William	2979	1300	L. Sullivan	"	65	46	20				131	33	11323	125	100	45418			4048	377	4171	all to J. M. Kimball		
	Same	4610	481	P. Mansfield	Duty lands		20	24 1/4				44 1/4	20	885			885			885	73	812	all to Curran & Marsh		
	Same	2979	1300	L. Sullivan	"		10	6 1/4				16 1/4	20	325			325			325	27	298	all to C. H. B. Kennerd		
	Same	2979	1300	L. Sullivan	"	60	15	20				95	32	3040	100		3140			3140	261	2879	all to Nathan Howard		
	Grinnold B. & B.	4610	481	P. Mansfield	"		20	9 1/4				29 1/4	20	585			585			585	49	536	all to Curran & Marsh		
	Same	2979	1300	L. Sullivan	Duty lands	24	45 1/2	15				84 1/2	32	2704	300	200	3204			3204	266	2938	Balance to Hester Hains		
	Robert William	12308	1000	M. Vance	"	5	5	20				30	15	450			450			450	37	4138	all to H. P. Gibson		
	Robert Samuel				"	10	20	60				90	14	1260			1260			1260	100	1360	all to Henry Jordan		
	Grant James	3156	200	H. Bumpstead	Duty lands	5	25	100				130	16	2080			2080			2080	175	1907	all Richard Turner		
	Collabury Willoughby				"	15	6	2				23	17	391			391			391	32	359			
	Erasmus Henry	3748	200	L. Sullivan	"		6					6	17	102			102			102	8	94			
	Same	2875	1000	S. Wallace	"	10	5	15				30	17	510			510			510	42	468			
	Grinnold B. & B.	2983	1000	J. Farber	"		40	11				51	25	1275			1275			1275	106	1169			
	Holmes Elbert	102	740	H. Whiting	Duty lands	4 1/4						4 3/4	33	157			157			157	13	144			
	Holmes M. & H.				"	15	6	10				31	33	1023			1023			1023	85	938			
	Holmes William	155	1200	Charles Simms	"	12	30	10				52	18	936			936			936	77	859			
	Holmes Abraham	2933	1000	P. Mansfield	"	45	35	46				126	25	3150	350	175	3675			3675	205	3370			
	Holmes Am. Reems	3749	600	J. Coleman	Duty lands	3	21					24	16	384			384			384	32	352			
	Holmes Prussia A	3681	1000	L. Sullivan	"	20 1/4	25 1/2					46	26	1105	100		1205			1205	100	1105			
	Same	158	1200	Chas. Simms	"		6	13 1/2				19 1/2	16	312			312			312	26	286	all to John B. Boyan		
	Hoffman R.	3749	600	J. Coleman	"	14	16					30	18	540			540			540	45	495			
	Hoffman Mary A.				Duty lands	10	20					30	18	540			540			540	45	495			
	Hoffman Joas				"	13	17 3/4					30 3/4	18	554			554			554	46	508			
	Howard Graham	8614 996 8614 7822	700	W. Allen	"	3 1/4	9 1/4	13				102 3/4	32	3248	1800	300	5548			5548	461	5087			
	Same	7822	388	C. Walker & Otho	"	61	21 1/4	10				72 1/4	33	3044	200	100	3344			3344	278	3066			
	Levi Thomas Jr.	2022	860 1/3	R. C. Cogswell	"	19	20	15				54	18	972			972			972	81	891			
	Holmes Charles	3749	600	J. Coleman	"	5						5	17	85			85			85	7	78			
	Hellinga Jacob	12308	1000	M. Vance	Duty lands	5		4 1/4				9 1/4	18	164			164			164	14	150	all to Conrad Boher		
	Harrison G. S.	158	1200	Charles Simms	"	36	50	24				110	20	2200	150		2350			2350	195	2155			
	Holmes Prussia B.	3681	1000	L. Sullivan	"		4					4	20	80			80			80	7	73	Exp. this sum of		
	Holmes Abraham	3749	600	J. Coleman	Duty lands	12	6	6				24	18	432			432			432	36	396	all to Curran & Marsh		
	Erasmus Hannah	1502	300	J. Denny	"	4 1/8						4 1/8	30	124			124			124	10	114			
						571 3/8	658 3/4	469 3/8				1699 3/4		41920	3525	1175	46620			46620	3871	42749			

Assessment of Real Property in *Allen* Township,

Union County, Ohio, for the Year 1880.

For Plats of Lands see Page	DESCRIPTION OF PROPERTY				No. of Acres of Land Classified.			Whole No. of Acres.	Value per acre excluding Buildings.	Total Value of Lands, excluding Buildings.	Value of all Buildings.			Total Value of Lands and Buildings.	Amount Added or Deducted by Co. Board of Equalization.		Total Value as Equalized by Co. Board.	Amount Added or Deducted by "State Board of Equalization.		Total Value as Equalized by State Board.	REMARKS.					
	IN WHOSE NAME ASSESSED.	No. of Entry.	Original Quantity.	Original Proprietor.	Water Course.	Arable and Plow Land.					Meadow and Pasture Land.	Uncultivated and Wood Land.	Houses.		Mills.	Other Buildings.		Dollars.	Added Dollars.			Deducted Dollars.	Dollars.	Added Dollars.	Deducted Dollars.	Dollars.
						Acres.	H.				Acres.															
	<i>Ruin Lockey</i>	158	12.00	<i>Charles Simms</i>	<i>Dartys bank</i>	15		5		20			400			400			33	367						
	<i>Inshup L & W.C.</i>	3651	10.00	<i>S. Sullivant</i>	"	48		32	20	100	40	1000	450		100	4550			378	4172						
	<i>Inshup Nancy</i>	158	12.00	<i>Charles Simms</i>	<i>Dartys bank</i>	13		45	20	18		1560			1560			129	1431							
	<i>Ruin Samuel L</i>	2781	10.00	<i>A. Taylor</i>	"	20		5		25	18	450			450			37	412	<i>see to Mr. S. Carpenter</i>						
	<i>Inshup L & W.C.</i>	3681	10.00	<i>S. Sullivant</i>	"			4		4	25	100			100			8	92							
	<i>Johnson A.J.</i>	3681	16.00	<i>Sullivant & Solomon</i>	<i>Dartys bank</i>	10	3/4	47	10	97 3/4	20	1955			1955			162	1793							
	<i>Johnson Benjamin</i>	158	12.00	<i>Charles Simms</i>	"	21	1/2	42	15	78 1/2	20	1570			1570			130	1440							
x	<i>Johnson William</i>	4733	5.00	<i>Thomas Gray</i>	<i>Dartys bank</i>	30	3/4	62	20	112 3/4	22	2481		100	2581			214	2367	<i>Jordan Hillman</i>						
	<i>Julian Samuel</i>	3748	3.00	<i>S. Sullivant</i>	"	10		20	20	50	18	900			900			75	825	<i>see to Daniel Fuller</i>						
	<i>Johns William</i>	3749	6.00	<i>J. Solomon</i>	"	5		5		10	18	180			180			15	165							
	<i>Jordan George</i>	158	12.00	<i>Charles Simms</i>	"	15	2/3	34	15	60 2/3	20	1293			1293			107	1186							
	<i>Same</i>				"			2		5 1/2	20	110			110			9	101							
	<i>James James M.</i>	3157	10.00	<i>William Carter</i>	<i>Dartys bank</i>				20	20	18	360			360			30	330							
	<i>Himball T. M.</i>	9654	700	<i>W. Dun & Othaz</i>	<i>Dartys bank</i>	45		23		68	25	1700			1700			141	1559							
	<i>Sam</i>	9565	500	<i>L. Dun & Othaz</i>	"	20		59		79	33	2607	500	200	3307			274	3033							
	<i>Sam</i>	9669	1000	<i>R. Stephenson</i>	"			8		8	34	272			272			23	249							
	<i>Sam</i>	7822	3337	<i>A. Waller</i>	"	10	1/2	20	17	47 1/2	33	1568			1568			130	1438							
	<i>Samuel James</i>	158	12.00	<i>Charles Simms</i>	<i>Dartys bank</i>	25	1/4	32	20	77 1/4	20	1545	100		1645			137	1508	<i>Should be 22 1/2 ac</i>						
	<i>Charles Henry B.</i>	2779	1800	<i>S. Sullivant</i>	"	18		26	18	62	22	1364			1364			113	1251	<i>He says 82 acres</i>						
	<i>Levy & Root</i>	2779	1300	<i>S. Sullivant</i>	<i>Dartys bank</i>	15	1/2	5	10	30 1/2	28	854			854			71	783							
	<i>Levi Jacob</i>	2779	2300	<i>Taylor & Sullivant</i>	"	63		45	40	148	25	3705	450		4155			340	3810							
	<i>Sam</i>	2875	1000	<i>S. Waller</i>	"			44	20	64 1/2	22	1419			1419			118	1301							
	<i>Levy Cochaine</i>			"	"	32	3/4	15	8	55 3/4	17	948			948			79	869							
	<i>Lincoln Charles</i>	2669	1000	<i>R. Stephenson</i>	"	20	1/2	24		44 1/2	32	1424			1424			118	1306							
	<i>Longbath Levi</i>	4819	933 1/2	<i>B. Bourneau</i>	<i>Dartys bank</i>	110	1/2	38	40	118 1/2	17	1015			1015			84	931	<i>see to Geo. P. Lewis</i>						
	<i>Sam</i>	3241	200	<i>O. H. Harrison</i>	"			43	20	63	17	1071			1071			89	982							
	<i>Lincoln Oliver O.</i>	7226	2.00	<i>W. Allen</i>	"			3		3 1/2	25	88			88			7	81							
	<i>Sam</i>	2779	1300	<i>S. Sullivant</i>	"	88		74	27	189	34	6426	250	200	6876			571	6305							
	<i>Levi Robert</i>	3157	1000	<i>William Carter</i>	"	5		5		10	21	200			200			17	183							
	<i>Wason Joseph</i>	158	12.00	<i>Charles Simms</i>	<i>Dartys bank</i>	1		5		6	20	120			120			10	110							
	<i>Wason Charles W.</i>	3157	1000	<i>William Carter</i>	"	15			47 1/2	62 1/2	18	1125			1125			93	1032	<i>see to Miller Warner</i>						
	<i>Woudenberg David</i>	15319	260	<i>J. Hallway</i>	"	15		9	15	39	16	624			624			52	572							
	<i>Sam</i>	12308	1000	<i>M. Vance</i>	"	5				5	16	80			80			7	73							
	<i>Woudenberg Elizabeth</i>	3241	200	<i>O. H. Harrison</i>	<i>Dartys bank</i>	5		22	11	37	16	592			592			49	543							
						616	1/6	806	462	1/2	1884	2/3	44106	1750	600	46456			3853	42601						

Assessment of Real Property in *Allen* Township,

Union County, Ohio, for the Year 1880.

For Plats of Lands see Page	DESCRIPTION OF PROPERTY					No. of Acres of Land Classified.						Total Value of Lands, excluding Buildings.	Value of all Buildings.			Total Value of Lands and Buildings.	Amount Added or Deducted by Co. Board of Equalization.		Total Value as Equalized by Co. Board.	Amount Added or Deducted by State Board of Equalization.		Total Value as Equalized by State Board.	REMARKS.			
	IN WHOSE NAME ASSESSED.	No. of Entry.	Original Quantity.	Original Proprietor.	Water Course.	Arable and Plow Land.		Meadow and Pasture Land.		Uncultivated and Wood Land.			Houses.	Mills.	Other Buildings.		Added Dollars.	Deducted Dollars.		Dollars.	Added Dollars.			Deducted Dollars.	Dollars.	
						Acres.	H.	Acres.	H.	Acres.	H.															Acres.
	<i>Merrill Charles</i>	3163	800	<i>R. Stephenson</i>	<i>Darby brook</i>	20		10						40	28	1120			1120	1120		93	1027			
	<i>Sam</i>	4880	250	<i>John Hoys</i>	"	40		41 3/4		60				141 3/4	20	2835			2835	2835		220	2600			
	<i>Mark Samuel</i>	2780	800	<i>J. M. Gregory</i>	"	12		52 1/2		30				94 1/2	26	2457	400		250	3107	3107		258	2849		
	<i>Mark Stanton</i>	4610	481	<i>P. Mansfield</i>	"	30		30		30				90	22	1950	200			2150	2150		181	1999		
	<i>Mr. Eli Eli</i>	3142	200	<i>J. William</i>	"	35		17 1/2		12				64 1/2	18	1161				1161	1161		96	1060		
	<i>Mamma Pettit</i>	3747	600	<i>J. Holman</i>	<i>Darby brook</i>			5						5	20	100				100	100		8	92		
	<i>Murphy John</i>	3752	100	<i>C. S. Grout</i>	"	25		15		20				60	17	1020				1020	1020		85	935		
	<i>Mark James E</i>	3747	600	<i>J. Holman</i>	"	75		40		15				130	18	2340	100			2440	2440		203	2237		
	<i>W. Henry Isaac</i>	2833	1000	<i>P. Mansfield</i>	"	46		45		7 1/4				98 1/4	30	2948	350		100	3398	3398		292	3116		
	<i>Sam</i>	2981	1000	<i>A. Burton</i>	"					25				25	20	500				500	500		42	458		
	<i>Mr. Jay Jacob F</i>	15307	260	<i>J. Gallaway</i>	<i>Darby brook</i>	30		50		20				100	18	1800	100			1900	1900		158	1742		
	<i>Margot S</i>	3151	1000	<i>W. Carter</i>	"	10 1/2				13				23 1/2	16	376				376	376		31	345		
	<i>Merrill Seth B</i>	4733	500	<i>Thos. Seay</i>	<i>Darby brook</i>	10		11 1/2						21 1/2	22	473				473	473		39	434		
	<i>Merrill Joshua</i>	4812	833 1/3	<i>P. Bouman</i>	"	9 1/2				6				18 1/2	18	279				279	279		23	256		
	<i>Sam</i>	15307	260	<i>J. Gallaway</i>	"	2		8						10	18	180				180	180		15	165		
	<i>Merrill Eli</i>	3151	1000	<i>William Carter</i>	"	15		5						20	20	400			100	500	500		42	458		
	<i>Mark Jacob V</i>	3152	200	"	"	30		11		60				101	17	1717				1717	1717		143	1574		
	<i>Patrick William</i>	3681	1000	<i>L. Suttant</i>	<i>Darby brook</i>	15				2				20	38	760				760	760		63	697		
	<i>Sam</i>	12081	82	<i>Sam's estate</i>	"	5		10						15	40	600	350		100	1050	1050		87	963		
	<i>James John</i>	2438	100	<i>J. Hoffman</i>	"	23		3		25				51	16	816				816	816		68	748		
	<i>Samuel Andrew</i>	15307	1260	<i>Walter Gallaway</i>	"	2								2	20	40				40	40		3	37		
	<i>Samuel W. H.</i>	3157	1000	<i>William Carter</i>	"	5		2						7	20	140				140	140		12	128		
	<i>James John</i>	3677	100	<i>C. Wilson</i>	"	15		20		75 1/2				110 1/2	18	1989				1989	1989		165	1824		
	<i>Sam</i>	2983	1000	<i>A. Burton</i>	<i>Darby brook</i>	134		55		50				239	22	5258	500		200	5958	5958		495	5463		
	<i>Sam</i>	3741	100	<i>J. William</i>	"	35		15		62				112	20	2240				2240	2240		186	2054		
	<i>Poling Roger</i>	2878	1000	<i>S. Wallace</i>	"	16		10 1/2		16				42 1/2	17	723				723	723		60	663		
	<i>Poling Theodore</i>	"	"	"	"	17		25 1/2		15				57 1/2	17	978				978	978		81	897		
	<i>Poling James</i>	2780	800	<i>J. M. Gregory</i>	"	20		119		30				99	25	2475	300			2775	2775		230	2545		
	<i>Poling James J</i>	3781	1000	<i>A. Burton</i>	"	20		14 1/2		24				58 1/2	24	1404	150			1554	1554		129	1425		
	<i>Poling Stephen</i>	"	"	"	"	35		39 1/2		60				134 1/2	22	2959				2959	2959		246	2713		
	<i>Poling Jesse B.</i>	2875	1000	<i>S. Wallace</i>	<i>Darby brook</i>	20		7 3/4		28				55 3/4	18	1004	125			1129	1129		94	1035		
	<i>Sam</i>	"	"	"	"	20		20 1/2		20				60 1/2	17	1029				1029	1029		80	944		
	<i>Poling Geo W</i>	2781	"	<i>A. Burton</i>	"	15		10						25	20	500				500	500		42	458	see to land J. Poling	
						790		625		715 3/4				2130 3/4		44601	2575			750	47926	47926		3710	43946	

Assessment of Real Property in *Allen* Township,

Union County, Ohio, for the Year 1880.

For Plats of Lands see Page	DESCRIPTION OF PROPERTY				No. of Acres of Land Classified.				Whole No. of Acres.	Value per Acre excluding Buildings.	Total Value of Lands, excluding Buildings.	Value of all Buildings.			Total Value of Lands and Buildings.	Amount Added or Deducted by Co. Board of Equalization.		Total Value as Equalized by Co. Board.	Amount Added or Deducted by State Board of Equalization.		Total Value as Equalized by State Board.	REMARKS.	
					Arable and Plow Land.	Meadow and Pasture Land.	Uncultivated and Wood Land.					Houses.	Mills.	Other Buildings.		Added Dollars.	Deducted Dollars.		Added Dollars.	Deducted Dollars.			
	Acres.	H.	Acres.	H.			Acres.	H.															
	IN WHOSE NAME ASSESSED.	No. of Entry.	Original Quantity.	Original Proprietor.	Water Course.	Acres.	H.	Acres.	H.	Acres.	H.	Dollars.	Dollars.	Dollars.	Dollars.	Dollars.	Dollars.	Dollars.	Dollars.	Dollars.	Dollars.		
	Poling Henry	4812	833 1/3	R. Boiman	Nasty Creek	32		122		125		277	20	5580	250		5830		5850	484	5346		
	Same	2875	1000	J. Wallace	"	7				20 3/4		27 3/4	20	535			535		555	46	509		
	Same					33				67		100	17	1700			1700		1700	141	1559	see Samuel G. Beard	
	Poling Jonathan	4812	833 1/3	R. Boiman	Nasty Creek	50		10		45		105	20	2100			2100		2100	174	1926		
	Poling Joseph	2983	1000	A. Tabor	"	20		20		8 1/2		48 1/4	24	1158	300		1458		1458	121	1337		
	Same	2875	"	J. Wallace	"	30		40		40		110	15	1980			1980		1980	164	1816		
	Poling Joseph D.			"	"	12		25		20		57	22	1254	300		1554		1554	129	1425		
	Poling S. K.			"	"	20		15		20		55	17	935	100		1035		1035	86	949		
	Poling Asenmus	7022	800 2/3	Rice Haggard	Nasty Creek	25		77		20		122	17	2074			2074		2074	172	1902	see Wm. M. Martin	
	Same	4812	833 1/3	R. Boiman	"			18 1/2				18 1/2	20	370			370		370	31	339		
	Poling Cyrus	2981	1000	A. Tabor	"	22		36		20		78	22	1716	100		1816		1816	151	1665		
	Same	4812	833 1/3	R. Boiman	"	10						10	22	220			220		220	18	202		
	Poling W. Jean	3747	600	J. Coleman	"	15		5				20	18	360			360		360	30	330	Poling Nathan.	
	Poling Sarah	3742	200	J. Miller	Nasty Creek	30		14		8		32	22	1144			1144		1144	95	1049		
	Poling P. P.	2875	1000	J. Wallace	"			5 1/2		5		10 1/2	17	179			179		179	15	164		
	Poling Sarah Jean	3752	200	William Carter	"							20										drop this Not found	
	Poling Sarah	3742	200	J. Miller	"	20				5 1/3		75 1/3	20	1510			1510		1510	125	1385		
	Poling Jeremiah J. N.	2875	1000	J. Wallace	"	25		16 1/2		10		51 1/2	22	1133			1133		1133	94	1039	see Jeremiah Poling	
	Same	2667	"	A. Stephenson	"	50		25		15		70	32	2880	100	100	3080		3080	256	2824	see Wm. C. J. D. Wood	
	Poling James (kins)	2981	1000	A. Tabor	Nasty Creek	5		5				10	18	180			180		180	15	165		
	Poling Lewis			"	"	5				5		10	18	180			180		180	15	165	see Lewis Bunnick	
	Poling James M.	4812	833 1/3	R. Boiman	"							3										drop this Not found	
	Same			"	"							3										drop this Not found	
	Poling John L.	4610	481	R. Mansfield	"					105	100	12	20	14			14		14	1	13		
	Poling James M.	4812	833 1/3	R. Boiman	"	3		2				5	20	100	100		200		200	17	183	all to Mary A. Casamson	
	Robinson William S.	158	1200	Charles Simms	Nasty Creek			14 1/2				14 1/2	20	290			290		290	24	266		
	Robinson William J.			"	"	11 1/10						11 1/10	20	222			222		222	18	204		
	Same	12318	1000	W. Vance	"	20		24 3/4		50		24 3/4	18	1706			1706		1706	142	1564		
	Robinson William S.	158	1200	Charles Simms	"	20		10		20		50	20	1000	150		1150		1150	95	1055		
	Robinson Francis M.			"	"	5		35 3/4		10		50 3/4	20	1015			1015		1015	84	931		
	Kream Samuel	12308	1000	W. Vance	"	40		79		50		169	18	3042			3042		3042	257	2790		
	Krahn J. F.	4812	833 1/3	R. Boiman	"	20		15				35	17	595			595		595	49	546	see Geo. Stoll	
	Kream George	12308	1000	W. Vance	"	20		20 1/2		36		76 1/2	16	1224			1224		1224	102	1122		
	Robinson Samuel	158	1200	C. Simms	"			26 1/10		15		41 1/10	20	822			822		822	68	754		
	Robinson J. M.	3748	200	L. Suttant	Nasty Creek	10		10		15		35	18	630			630		630	52	578	see J. D. Bann	
	Krahn J. F. & Henry	3157	1000	W. Carter	"	30		57 3/4				87 3/4	20	1755	300	150	2205		2205	183	2022		
	Same	3749	600	J. Coleman	"			23 1/4		10		33 1/4	20	665			665		665	55	610		
	Same	158	1200	Charles Simms	"					10		10	18	180			180		180	15	165		
	Kream Sarah A.	3748	200	L. Suttant	"			1 3/8		4		5 3/8	17	87			87		87	7	80		
	Kream Ellen	2833	1000	R. Mansfield	Nasty Creek	10		30		40		80	30	2400		100	2500		2500	208	2292		
						600	1/10	784	29	40	745	7/40	2130		4295	1700	850	45005		45005	3734	4127	

Assessment of Real Property in *Allen* Township,

Union County, Ohio, for the Year 1880.

For Plats of Lands see Page	DESCRIPTION OF PROPERTY					No. of Acres of Land Classified.						Whole No. of Acres.	Value per Acre of Building.	Total Value of Lands, excluding Buildings.	Value of all Buildings.			Total Value of Lands and Buildings.	Amount Added or Deducted by Co. Board of Equalization.		Total Value as Equalized by Co. Board.	Amount Added or Deducted by State Board of Equalization.		Total Value as Equalized by State Board.	REMARKS.
						Arable and Plow Land.		Meadow and Pasture Land.		Uncultivated and Wood Land.					Houses.	Mills.	Other Buildings.		Added Dollars.	Deducted Dollars.		Added Dollars.	Deducted Dollars.		
	IN WHOSE NAME ASSESSED.	No. of Entry.	Original Quantity.	Original Proprietor.	Water Course.	Acres.	H.	Acres.	H.	Acres.	H.				Acres.	H.	Dollars.		Dollars.	Dollars.		Dollars.	Dollars.		
	Stilling Thomas	2983	1000	A. Taborn	Dartysbank	30		20		94			144	22	3168			3168			3168	263	2905		
	Stilling Thomas	2983	1000	Sullivan & Olin	"	25		94		20			149	26	4134	4100	210	4734			4734	393	4341		
	Stoker John W	2606	320	John Cuthin	"			15		20			34	25	875	200	125	1200			1200	100	1100		
	Same	12242	140	Grant & Michers	"	21	3/4						21	24	522			522			522	43	479		
	Stewart James	5240	480	Garman & Baily	Dartysbank	40		23		90			153	22	3366			3366			3366	279	3087		
	Stewart Margaret A	4812	833 1/2	R. Rocman	"	20		23					48	17	731			731			731	61	670		
	Spain Abraham	"	"	"	"	11		32	1/2	50			113	20	2270			2270			2270	188	2082		
	Spain S. W.	3749	1000	Sullivan & Coleman	"	20		40		14			24	22	1628	150	100	1878			1878	156	1722		
	Same	"	"	"	"	16		20					36	22	792	200		992			992	82	910		
	Spain S. W.	3681	1000	S. Sullivan	"	25		5		20			40	25	1250			1250			1250	104	1146		
	Spain S. W.	3749	600	J. Coleman	Dartysbank	15		10		10			35	20	700	150		850			850	71	779		
	Same	2981	1000	A. Taborn	"	10		14		17			41	18	738			738			738	62	676		
	Spain S. W. E.	3749	600	J. Coleman	"	30		20		18			68	22	1496	150		1646			1646	137	1509		
	Spain Thomas	1502	800	James Henry	"	20		3	1/2	10			32	35	1164	100	100	1364			1364	113	1251		
	Shauffin S. W.	3681	1000	S. Sullivan	Dartysbank	25		35		40			100	38	3800		100	3900			3900	324	3576		
	Same	3163	800	R. Rocman	"	40		10					50	35	1750			1750			1750	145	1605		
	Same	2533	1000	P. Mansfield	"	23		37		40			100	24	2400			2400			2400	199	2201		
	Spain J. D. & H. E.	3681	"	S. Sullivan	"	20		25		5			50	30	1500			1500			1500	125	1375		
	Spain Eddie	3749	600	J. Coleman	"			3/4					3/4	20	15			15			15	1	14		
	Spillman W. G.	4812	833 1/2	R. Rocman	"			5					5	20	100			100			100	8	92	to Catherine S. Dingley	
	Spain John F	2983	1000	P. Mansfield	Dartysbank			1	3/4				1	35	61	200		61			61	5	56		
	Same	"	"	"	"			1	3/4				1	15	26			26			26	2	24		
	Smith Robert	12305	1000	M. Vance	"	10	1/4			40			50	15	754			754			754	63	691		
	Same	3151	"	William Carter	"	57				30			87	16	1392	100		1492			1492	124	1368		
	Same	15307	360	J. Shannon	"	15		12	1/4				27	20	545	100		645			645	54	591		
	Same	"	"	"	"	12		5					17	18	306			306			306	25	281		
	Same	3151	1000	William Carter	"	41	3/8	20					61	22	1356			1356			1356	112	1244		
	Same	15306	15	H. Massie	"					8 1/2			8 1/2	12	102			102			102	8	94	State of Ohio	
	Stilling Edward	2983	2300	Sullivan & Olin	Dartysbank	25		42	3/4	15			82	34	2132	350	125	2627			2627	218	2409		
	Schmiller Andrew Jr	3752	100	George Copland	"	30				12 1/2			42	16	674			674			674	56	618		
	Spain William W	102	740	H. Whiting	"	29		3	1/2				32	35	1138			1138			1138	94	1044		
	Spain David A.	3681	1600	Sullivan & Coleman	"	10		11		4			25	22	550			550			550	46	504		
	Spain Arch	153	1200	W. S. Simms	Dartysbank	6		17		10			33	18	594			594			594	49	545		
	Smith Thomas & William	"	"	"	"	25		1	3/5	5			31	34	569			569			569	47	522		
	Smith Ciddings & Co	3151	1000	William Carter	"	100		191	3/4	40			331	34	5972	500	300	100	6872			6872	570	6302	to S. S. Leonard
	Same	7022	866 2/3	Rich Haggan	"	202		250		300			750	16	12000		100	12100			12100	1004	11096	to Aramus Poling	
	Same	14602	40	H. Massie	"	10		10		23			43	17	731			731			731	61	670		
	Spain Richard W	2981	1500	A. Taborn	"	15		20		5			40	20	800	100	100	1000			1000	83	917		
	Saplitzsch J. S.	3748	200	S. Sullivan	"	7		1		5			13	20	260			260			260	22	238		
	Smith Robert (Ohio)	3681	1600	Sullivan & Coleman	Dartysbank	50		20		30			100	25	2500			2500			2500	208	2292		
	State of Ohio	14309	260	J. Shannon	"	10		10		5			25	16	400			400			400	33	367	Smith Robert	
	Same	3748	200	S. Sullivan	"	1		1					2	16	32			32			32	drop this (29)	Parmer A		
	Same	153	1200	W. S. Simms	"								31	1/2								drop this	Not Found		
	Spain J.	3748	200	L. Sullivan	"	2							2	18	36			36			36	3	33		
	Sullivan W. S.	8563	500	Over Haines	"					3 5/8			3	50	10	30							30	47-214	

Assessment of Real Property in *Allen* Township,

Union County, Ohio, for the Year 1880.

For Plats of Lands see Page	IN WHOSE NAME ASSESSED.	No. of Entry.	Original Quantity.	Original Proprietor.	Water Course.	No. of Acres of Land Classified.						Whole No. of Acres.	Value per Acre, including Buildings.	Total Value of Lands, excluding Buildings.	Value of all Buildings.			Total Value of Lands and Buildings.	Amount Added or Deducted by Co. Board of Equalization.		Total Value as Equalized by Co. Board.	Amount Added or Deducted by State Board of Equalization.		Total Value as Equalized by State Board.	REMARKS.
						Arable and Plow Land.		Meadow and Pasture Land.		Uncultivated and Wood Land.					Houses.	Mills.	Other Buildings.		Added Dollars.	Deducted Dollars.		Added Dollars.	Deducted Dollars.		
						Acres.	H.	Acres.	H.	Acres.	H.				Dollars.	Dollars.	Dollars.		Dollars.	Dollars.		Dollars.	Dollars.		
	<i>Peter Michael</i>	12242	1440	<i>Craw & Wickes</i>	<i>Shubanks</i>	10	8 3/4				18 3/4	22	413			413		413		34	379				
	<i>Suma George H</i>	7022	866 2/3	<i>Rice & Haggart</i>	<i>Shubanks</i>		2				2	18	36			36		36		3	33				
	<i>Thomas Griffith</i>	3748	203	<i>Schumann</i>	"	4	3	1			8	18	144			144		144		12	132				
	<i>Thompson Rebecca</i>	12318	1000	<i>W. Vance</i>	"	20		40			60	15	900			900		900		75	825				
	<i>Tatman Charles</i>	3241	201	<i>W. Vance</i>	"			4 1/2			4 1/2	18	81			81		81		7	74	Group this land			
	<i>Sum</i>	4812	833 2/3	<i>B. Boiman</i>	"	31	27 3/4	10			68 3/4	18	1238	100	100	1438		1438		119	1319	aut. sh. B. Stone			
	<i>Totten Eliza</i>	2375 2330	1800	<i>Wallace & Gray</i>	"		1 1/2				1 1/2	30	45	400		445		445		37	408	all to Stephen Williams			
	<i>Uma Davo</i>	4812	833 2/3	<i>B. Boiman</i>	<i>Shubanks</i>	23 3/4	12	20			55 3/4	18	1004	100		1104		1104		92	1012				
	<i>Williams A. H. (Ohio)</i>	2375 2330	1800	<i>Gray & Wallace</i>	<i>Shubanks</i>	54	51	100			205	20	4100			4100		4100		340	3760	139 th W. L. Conyle			
	<i>Wilbur Christopher</i>	2979	1301	<i>S. S. S. S. S.</i>	"	40	39	60			139	22	3058	250	125	3433		3433		280	3148				
	<i>Sum</i>	2980	801	<i>J. B. Gray</i>	"	20	30	20			70	22	1540			1540		1540		128	1412				
	<i>Wilbur James</i>				"	33	80	30			113	25	2825	350	130	3305		3305		274	3031				
	<i>Wilbur Zachariah D.</i>				"	20	33	30			98	25	2075			2075		2075		172	1903				
	<i>Wilson Samuel</i>	13308	1000	<i>W. Vance</i>	<i>Shubanks</i>	10	10				30	18	360			360		360		30	330	5 th to Martha Wilson 15 th to Henry A. Wilson			
	<i>Wilson Thomas G.</i>				"		10	16 1/2			26 1/4	20	525			525		525		44	481				
	<i>Wilson Robert J.</i>	158	1200	<i>C. Simms</i>	"	20	23 1/4	10			53 1/4	20	1065	100		1165		1165		97	1068				
	<i>Sum</i>	3749	600	<i>J. Coleman</i>	"		2	10			12	18	216			216		216		18	198	Allen Sharpe			
	<i>Willy John W.</i>	4812	833 2/3	<i>B. Boiman</i>	"	20	10	10			40	17	680			680		680		56	624	all to Jacob D. White			
	<i>Wood William G.</i>	2669	1000	<i>R. Stephenson</i>	<i>Shubanks</i>	40	41	20			201	32	6432	450	175	7007		7007		582	6425				
	<i>Wood James D.</i>	2979	1301	<i>S. S. S. S. S.</i>	"	10	42	8			60	23	1380			1380		1380		110	1265				
	<i>Sum</i>	2669	1000	<i>R. Stephenson</i>	"	10	19				29	32	928	200		1128		1128		94	1034				
	<i>William Hugh</i>	158	1200	<i>C. Simms</i>	"	4	24	10			38	20	760			760		760		63	697				
	<i>Waddle Samuel</i>				"	20	34 3/4	30			84 3/4	22	1865	300	200	2365		2365		196	2169	should be 22 He says 8.2 acres.			
	<i>Sum</i>	4880	250	<i>John Hayes</i>	<i>Shubanks</i>	8 3/4					8 3/4	22	127			127		127		11	116				
	<i>Wood James</i>	3681	1000	<i>S. S. S. S. S.</i>	"	30	34	30			94	33	3102	800	225	4127		4127		343	3784				
	<i>Wilbur Owen</i>	2981		<i>W. Vance</i>	"	50	48	25			123	25	3075	450	100	3625		3625		301	3324				
	<i>Sum</i>	2780	801	<i>J. M. Gray</i>	"	40	42 1/2	15			97 1/2	21	2340			2340		2340		194	2146	all to Alpha Wilson			
	<i>West Amy D.</i>	4812 3241	1033 2/3	<i>Boiman & Boiman</i>	"	16	21 1/4	20			57 1/4	18	1031	100		1131		1131		94	1027	all to Sh. B. Stone			
	<i>Wolford Abraham</i>	15309	260	<i>J. G. Gray</i>	"	16	9	25			50	16	800			800		800		66	734				
	<i>Wood Luther A.</i>	2669	1000	<i>R. Stephenson</i>	"	20	21 1/10	7			48 1/10	30	1443	125		1568		1568		130	1438				
	<i>Wolford Adams</i>	158	1200	<i>Chas. Simms</i>	"	10	30	10			50	20	1000			1000		1000		83	917				
	<i>Warner M.</i>	3151	1000	<i>Wm. Carter</i>	"		3	10			13	20	260			260		260		22	238				
	<i>Sum</i>	3749	600	<i>James Colman</i>	"	10	6	10			26	16	416			416		416		38	381				
	<i>Wilbur Edwin</i>	2981	1000	<i>A. Parsons</i>	"	65	33	25			123	25	3075		100	3175		3175		264	2911				
	<i>Sum</i>	2980	800	<i>J. M. Gray</i>	"	40	56	25			121	23	2783		100	2883		2883		239	2644				
	<i>Wetzel M.</i>	7822	3337	<i>Walke & Jones</i>	"	14	8 1/2				22 1/2	33	743	550	1400	100	2793		2793		232	2561	will not transfer 15 th to Nathan Howard		
	<i>Williams James</i>	2875	1000	<i>S. Wallace</i>	"	14	10 3/4				24 3/4	20	495			495		495		41	454	all to America Williams			
						170 1/2	847 1/10	631 3/4			2249 1/20		52360	4225	1400	1355	59340		59340		4928	39340			

For Plats of Lands see Page	DESCRIPTION OF PROPERTY					No. of Acres of Land Classified.			Whole No. of Acres.	Value per Acre, excluding Buildings.	Total Value of Lands, excluding Buildings.	Value of all Buildings.			Total Value of Lands and Buildings.	Amount Added or Deducted by Co. Board of Equalization.		Total Value as Equalized by Co. Board.	Amount Added or Deducted by State Board of Equalization.		Total Value as Equalized by State Board.	REMARKS.	
	In Whose Name Assessed.	No. of Entry.	Original Quantity.	Original Proprietor.	Water Course.	Arable and Plow Land.	Meadow and Pasture Land.	Uncultivated and Wood Land.				Houses.	Mills.	Other Buildings.		Added Dollars.	Deducted Dollars.		Added Dollars.	Deducted Dollars.			
						Acres.	H.	Acres.	H.	Acres.	H.	Acres.	H.	Dollars.	Dollars.	Dollars.	Dollars.	Dollars.	Dollars.	Dollars.	Dollars.		
	William James	2875	1000	S. Wallan	Stony bank																		
	Wm. Martin	8465	3897	Walter D. Dyer	" "																		
	Wm. Adams	138	12.00	Charles Lemms	" "																		
	Wm. Adams	2875	18.00	Walter D. Dyer	" "																		
	Same	2981	1000	A. Tabor	" "																		
	Wm. Miller	3247	6.00	J. Holman	Stony bank																		
	Same	8181	1000	William Baxter	" "																		
Recapitulation.																							
<i>Footings.</i>																							
	Brk from page	1				839 ³⁷ / ₁₀₀		698 ²⁴ / ₅₀		477 ³ / ₈		2019 ¹ / ₃₂		56705	3475	100	1350	63620					
	"	2				882 ¹ / ₁₂		841		333 ³ / ₄		2257 ¹ / ₂		54560	3450	300	2000	60314					
	"	3				605		564 ⁷ / ₁₀		405 ³ / ₄		1545 ³ / ₄		31473	725		600	32788					
	"	4				571 ³ / ₈		658 ³ / ₄		469 ³ / ₈		1699 ³ / ₄		41920	3525		1175	46620					
	"	5				616 ⁶ / ₆		806		462 ¹ / ₃		1884 ² / ₃		44106	1750		600	46456					
	"	6				790		625		715 ³ / ₄		2130 ³ / ₄		44601	2575		750	47926					
	"	7				600 ¹ / ₁₀		784 ²⁹ / ₄₀		745 ⁷ / ₁₀		2130		40955	1700		350	45005					
	"	8				1050 ¹ / ₃		1070 ² / ₁₀		1100 ³ / ₄		3121 ¹ / ₁₀		65349	2500	300	1050	69299					
	"	9				170 ¹ / ₁₂		847 ¹ / ₁₀		631 ³ / ₄		2249 ¹ / ₂₀		52360	4225	1400	1355	59310					
						6125		6896		5442		19037		434029	22825	2100	9230	471368					

Average value of lands per acre excluding buildings \$22.77-
 Average value of lands with buildings 24.76-

Assessment of Real Property in

Township,

Union County, Ohio, for the Year 1880.

For Plats of Lands see Page	DESCRIPTION OF PROPERTY				No. of Acres of Land Classified.						
					Arable and Plow Land.		Meadow and Pasture Land.		Uncultivated and Wood Land.		
	In Whose Name Assessed.	No. of Entry.	Original Quantity.	Original Proprietor.	Water Course.	Acres.	H.	Acres.	H.	Acres.	H.
<i>Church Property.</i>											
			<i>M. E. Church</i>	<i>Q. Simms</i>	<i>Sarby Creek</i>						
			<i>U. B. Church</i>	<i>L. Sullivan</i>	"						
			<i>M. E. Church</i>	<i>J. M. Gregory</i>	"						
			<i>M. E. Church</i>	<i>Wm. Curtiss</i>	"						
			<i>Baptist Church</i>	<i>B. Brauser</i>	"						

Whole No. of Acres.	Value per Acre of Buildings.	Total Value of Lands, excluding Buildings.	Value of all Buildings.			Total Value of Lands and Buildings.	Amount Added or Deducted by Co. Board of Equalization.		Total Value as Equalized by Co. Board.	Amount Added or Deducted by State Board of Equalization.		Total Value as Equalized by State Board.	REMARKS.
			Houses.	Mills.	Other Buildings.		Added Dollars.	Deducted Dollars.		Added Dollars.	Deducted Dollars.		
			Dollars.	Dollars.	Dollars.		Dollars.	Dollars.		Dollars.	Dollars.		
$\frac{3}{4}$		15 600			615								
$\frac{1}{4}$		7 600			607								<i>Sarby Chapel</i>
		150			150								
$\frac{1}{4}$		4 350			354								
$\frac{1}{2}$		10 300			310								<i>Allen Centre</i>
		36 2000											

Assessment of Real Property in

Township,

Union County, Ohio, for the Year 1880.

For Plats of Lands see Page

DESCRIPTION OF PROPERTY

No. of Acres of Land Classified.

Arable and Flow Land. Meadow and Pasture Land. Uncultivated and Wood Land.

IN WHOSE NAME ASSESSED.

No. of Entry.

Original Quantity.

Original Proprietor.

Water Course.

Acres. H. Acres. H. Acres. H.

Whole No. of Acres.

Value per Acre, excluding Buildings.

Total Value of Lands, excluding Buildings.

Value of all Buildings.

Houses.

Mills.

Other Buildings.

Total Value of Lands and Buildings.

Amount Added or Deducted by Co. Board of Equalization.

Total Value as Equalized by Co. Board.

Amount Added or Deducted by State Board of Equalization.

Total Value as Equalized by State Board.

REMARKS.

Cemeteries.

Dorwick 2669 1000 R. Stephens
Buck Run 2875 1000 S. Wallace

/

/

Assessment of Real Property in

Township,

Union County, Ohio, for the Year 1880.

For Plats
of Lands
see Page

DESCRIPTION OF PROPERTY

No. of Acres of Land Classified.

Arable and
Plow
Land. Meadow and
Pasture
Land. Uncultivated
and Wood
Land.

IN WHOSE NAME ASSESSED.

No.
of Entry.

Original
Quantity.

Original Proprietor.

Water Course.

Acres. H. Acres. H. Acres. H.

Value of all Buildings.

Houses.

Mills.

Other
Buildings.

Total Value
of Lots
and
Buildings.

Amount Added
or Deducted by
Co. Board
of Equalization.

Total Value
as Equalized
by
Co. Board.

Amount Added
or Deducted by
State Board
of Equalization.

Total Value
as Equalized
by
State Board.

REMARKS.

Dollars.

Dollars.

Dollars.

Dollars.

Added
Dollars.

Deducted
Dollars.

Dollars.

Added
Dollars.

Deducted
Dollars.

Dollars.

Recapitulation

Brot from page 1
" 2
" 3
" 4
" 5
" 6
" 7
" 8
" 9

54175 100 1350 63620
34150 300 2000 60314
725 600 32788
3525 1175 46620
1750 600 46456
2575 750 47926
1700 350 45005
2500 300 1050 69299
4225 1400 1355 59340

Assessment of Lots in the Town of *Pittsburg*

Union County, Ohio, for the Year 1880.

For Plats of Lots see Page	DESCRIPTION OF PROPERTY.						Value of Lots. Dollars.	Value of all Buildings.			Total Value of Lots and Buildings. Dollars.	Amount Added or Deducted by Co. Board of Equalization.		Total Value as Equalized by State Board. Dollars.	Amount Added or Deducted by State Board of Equalization.		Total Value as Equalized by State Board. Dollars.	REMARKS.	
	IN WHOSE NAME ASSESSED.	ADDITION.	No. of In-Lot.	No. of Out-Lot.	WHAT PART OF LOT.	No. Feet Front.		No. Feet Depth.	Houses.	Mills.		Other Buildings.	Added Dollars.		Deducted Dollars.	Added Dollars.			Deducted Dollars.
									Dollars.	Dollars.		Dollars.	Dollars.		Dollars.	Dollars.			Dollars.
	<i>Ehrig Jonas C</i>	<i>Cumtangs</i>	<i>12</i>		<i>all</i>	<i>82.40</i>	<i>10</i>			<i>350</i>		<i>360</i>		<i>360</i>	<i>30</i>	<i>330</i>			
	<i>Sam</i>		<i>10</i>		<i>"</i>	<i>82.40</i>	<i>8</i>				<i>8</i>	<i>8</i>		<i>1</i>	<i>7</i>				
	<i>Sam</i>	<i>+</i>	<i>12</i>		<i>"</i>	<i>82.40</i>	<i>8</i>	<i>100</i>		<i>108</i>		<i>108</i>		<i>9</i>	<i>99</i>	<i>drop this</i>			
	<i>Sam</i>		<i>14</i>		<i>"</i>	<i>82.40</i>	<i>8</i>	<i>225</i>		<i>233</i>		<i>233</i>		<i>19</i>	<i>214</i>				
	<i>Sam</i>		<i>16</i>		<i>"</i>	<i>82.40</i>	<i>8</i>			<i>8</i>		<i>8</i>		<i>1</i>	<i>7</i>				
	<i>Standuff Mary C</i>	<i>+</i>	<i>1</i>		<i>"</i>	<i>82.40</i>	<i>8</i>	<i>100</i>		<i>108</i>		<i>108</i>		<i>9</i>	<i>99</i>	<i>all to Lewis Poling</i>			
	<i>Hunt Leonard</i>		<i>3</i>		<i>all</i>	<i>82.40</i>	<i>5</i>			<i>5</i>		<i>5</i>		<i>1</i>	<i>4</i>				
	<i>Levin Lackey</i>	<i>Cumtangs</i>	<i>11</i>		<i>"</i>	<i>82.40</i>	<i>25</i>			<i>25</i>		<i>25</i>		<i>2</i>	<i>23</i>				
	<i>Jennings W.P.</i>		<i>21</i>		<i>all</i>	<i>82.40</i>	<i>8</i>			<i>8</i>		<i>8</i>		<i>1</i>	<i>7</i>				
	<i>Sam</i>		<i>23</i>		<i>"</i>	<i>82.40</i>	<i>8</i>			<i>8</i>		<i>8</i>		<i>1</i>	<i>7</i>				
	<i>Sam</i>		<i>17</i>		<i>"</i>	<i>82.40</i>	<i>8</i>	<i>250</i>		<i>258</i>		<i>258</i>		<i>22</i>	<i>236</i>				
	<i>Sam</i>		<i>19</i>		<i>"</i>	<i>82.40</i>	<i>8</i>			<i>8</i>		<i>8</i>		<i>1</i>	<i>7</i>				
	<i>Leary Abel M.</i>		<i>15</i>		<i>all</i>	<i>82.40</i>	<i>8</i>	<i>150</i>		<i>158</i>		<i>158</i>		<i>13</i>	<i>145</i>				
	<i>Sam</i>		<i>13</i>		<i>"</i>	<i>82.40</i>	<i>8</i>			<i>8</i>		<i>8</i>		<i>1</i>	<i>7</i>				
	<i>Ludwick Lewis</i>		<i>6</i>		<i>"</i>	<i>82.40</i>	<i>8</i>			<i>8</i>		<i>8</i>		<i>1</i>	<i>7</i>				
	<i>Sam</i>		<i>8</i>		<i>"</i>	<i>82.40</i>	<i>8</i>			<i>8</i>		<i>8</i>		<i>1</i>	<i>7</i>				
	<i>Sam</i>		<i>4</i>		<i>"</i>	<i>82.40</i>	<i>28</i>			<i>25</i>		<i>25</i>		<i>2</i>	<i>23</i>				
	<i>Almer John J.</i>	<i>Cumtangs</i>	<i>14</i>		<i>all</i>	<i>82.40</i>	<i>10</i>			<i>10</i>		<i>10</i>		<i>1</i>	<i>9</i>				

179

1175

1354

1354

116

1238

Assessment of Lots in the Town of *Pittsburgh*

For Plats of Lots see Page	DESCRIPTION OF PROPERTY.						Value of Lots. Dollars.
	IN WHOSE NAME ASSESSED.	ADDITION.	No. of In-Lot.	No. of Out-Lot.	WHAT PART OF LOT.	No. Feet Front.	
	<i>Smith Robert</i>		18		<i>all</i>	82.50	25
	<i>Same</i>	<i>Lumburg</i>	1		"	214.80	15
	<i>Same</i>	"	2		"	82.50	5
	<i>Same</i>	"	3		"	82.50	5
	<i>Same</i>	"	4		"	82.50	5
	<i>Same</i>	"	5		<i>all</i>	82.50	6
	<i>Same</i>	"	6		"	82.50	6
	<i>Same</i>	"	7		"	82.50	7
	<i>Same</i>	"	8		"	82.50	8
	<i>Same</i>	"	9		"	82.50	10
	<i>Same</i>	"	10		<i>all</i>	82.50	25
	<i>Same</i>	"	13		"	82.50	10
	<i>Warner M</i>		9		<i>all</i>	82.50	8
	<i>Same</i>		11		"	82.50	8
	<i>Warner Myrtle</i>		2		"	82.50	8
	<i>Warner Samuel</i>		5		<i>all</i>	82.50	8
	<i>Same</i>		20		"	82.50	8
	<i>Warner Francis</i>		7		"	82.50	8
	<i>Williams & Bennett</i>		22		"	82.50	
	<i>Same</i>		24		<i>all</i>	82.50	

175

Union County, Ohio, for the Year 1880.

Value of all Buildings.			Total Value of Lots and Buildings.	Amount Added or Deducted by Co. Board of Equalization.		Total Value as Equalized by Co. Board.	Amount Added or Deducted by State Board of Equalization.		Total Value as Equalized by State Board.	REMARKS.
Houses.	Mills.	Other Buildings.		Added Dollars.	Deducted Dollars.		Added Dollars.	Deducted Dollars.		
			25			25			2	23
			15			15			1	14
			5			5			1	11
			5			5			1	11
			5			5			1	11
			6			6			1	5
			6			6			1	5
			7			7			1	6
			8			8			1	7
110			110			110			9	101
			25			25			2	23
210			210			210			17	193
208			208			208			17	191
			8			8			1	7
225			225			225			19	214
			8			8			1	7
208			208			208			17	191
			8			8			1	7
										<i>School House</i>
										<i>Same</i>

925

1100

1100

94 1006

**ALLEN TP.
UNION COUNTY
1880**