

DOVER TP.  
UNION COUNTY  
1880.

# APPRAISER'S ACCOUNT.

TREASURY OF Union COUNTY,

THE DATE OF EACH DAY	
Employed in making said Appraisement was as follows:	
7 day of <u>April</u>	17 day of <u>May</u>
8 day of "	18 day of "
9 day of "	19 day of "
10 day of "	20 day of "
13 day of "	21 day of "
14 day of "	day of "
15 day of "	day of "
16 day of "	day of "
20 day of "	day of "
21 day of "	day of "
22 day of "	day of "
23 day of "	day of "
24 day of "	day of "
27 day of "	day of "
28 day of "	day of "
day of "	day of "
day of "	day of "
day of "	day of "
day of "	day of "

ODELL & MAYER, Blank Book Manufacturers, Stationers and Legal Book Publishers, Dayton, Ohio.

To Adam Phillip Land Appraiser of Dover Township, Or.

For services rendered in appraising the Real Estate of said Township, for the year 1880 occupying 20 days, between the 7<sup>th</sup> day of April and the 21<sup>st</sup> day of May at \$20<sup>00</sup> per day, \$400<sup>00</sup>  
 And the said Adam Phillip being duly sworn, solemnly declares that the number of days herein stated, were necessarily occupied in the appraisement of said Township, and that this account is in all respects just and true.

(Signed). Adam Phillip Appraiser.

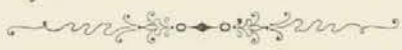
Sworn to and subscribed before me, this 22<sup>d</sup> day of May 1880

(Signed). W. L. Curry Auditor of said County.

Received May 22<sup>d</sup> 1880 of the Auditor of Union County, an order on the Treasurer of said County, for Forty Dollars, 00 Cents, in full of the above account.

\$400<sup>00</sup> (Signed). Adam Phillip Appraiser.

# APPRAISER'S OATH.



State of Ohio, Union County, ss.

I, Adam Phillips Land Appraiser for  
Dover Township, in the County of Union and State of Ohio, do solemnly  
swear that the return to which this is attached contains a correct description of each parcel of Real Property within said  
district, as far as I have been able to ascertain the same, and that the value attached to each parcel in said return is,  
as I verily believe, the full value thereof. Estimated agreeably to the rules prescribed therefor in the act for levying  
taxes on all property of this State, according to its true value.

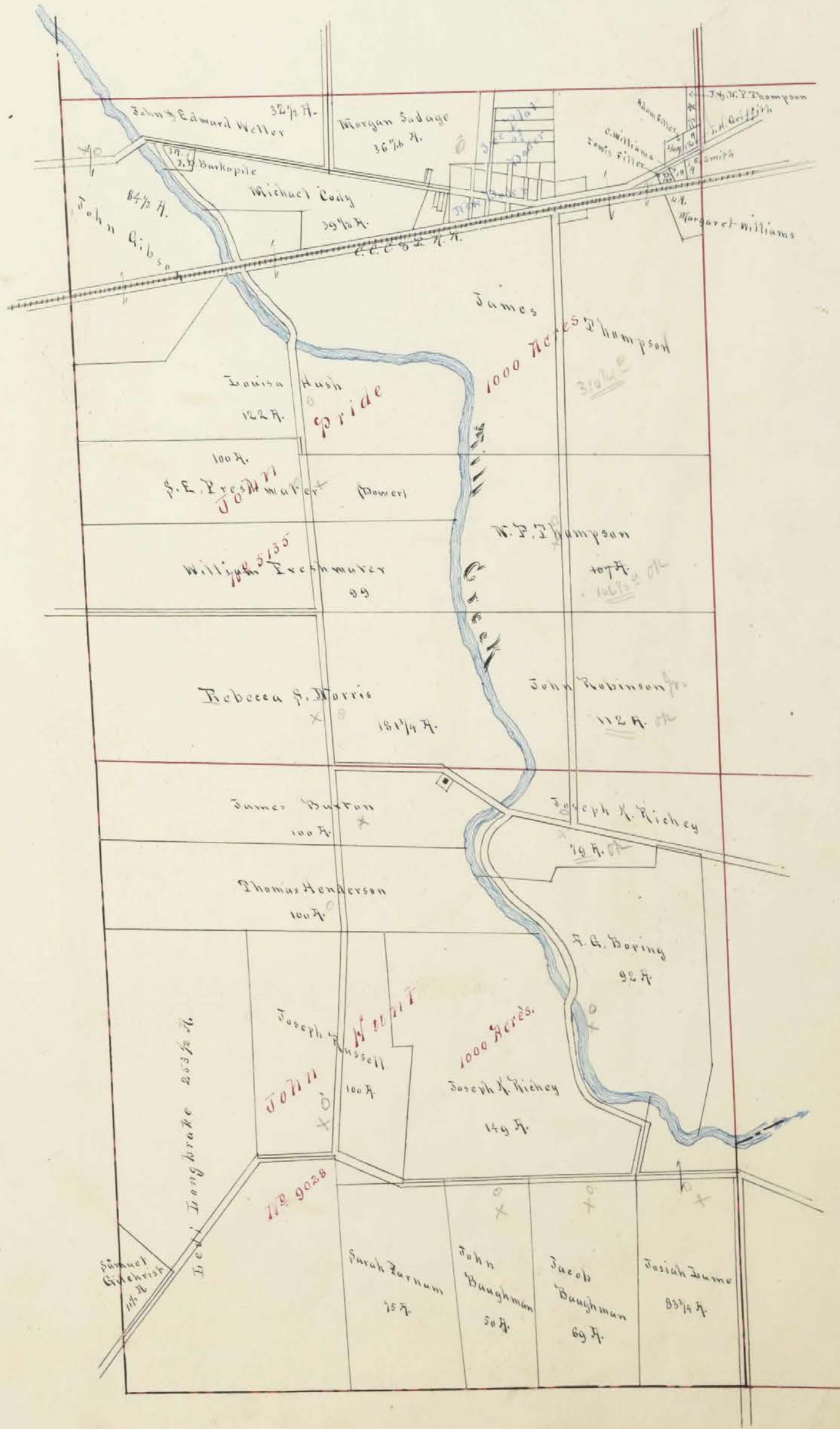
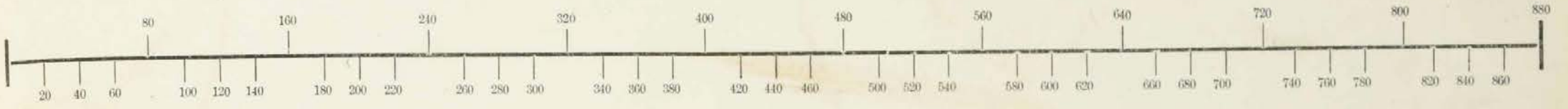
Signed, Adam Phillips  
APPRAISER OF SAID TOWNSHIP.

Sworn and subscribed to before me, the undersigned authority, this

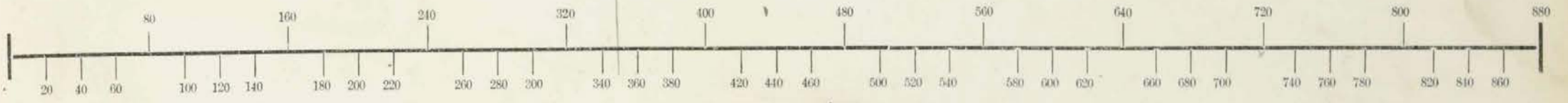
22<sup>d</sup> day of May A. D. 1880

Signed, W. L. Leary  
AUDITOR OF SAID COUNTY.

Scale, 80 Poles to an Inch.



Scale, 80 Poles to an Inch.



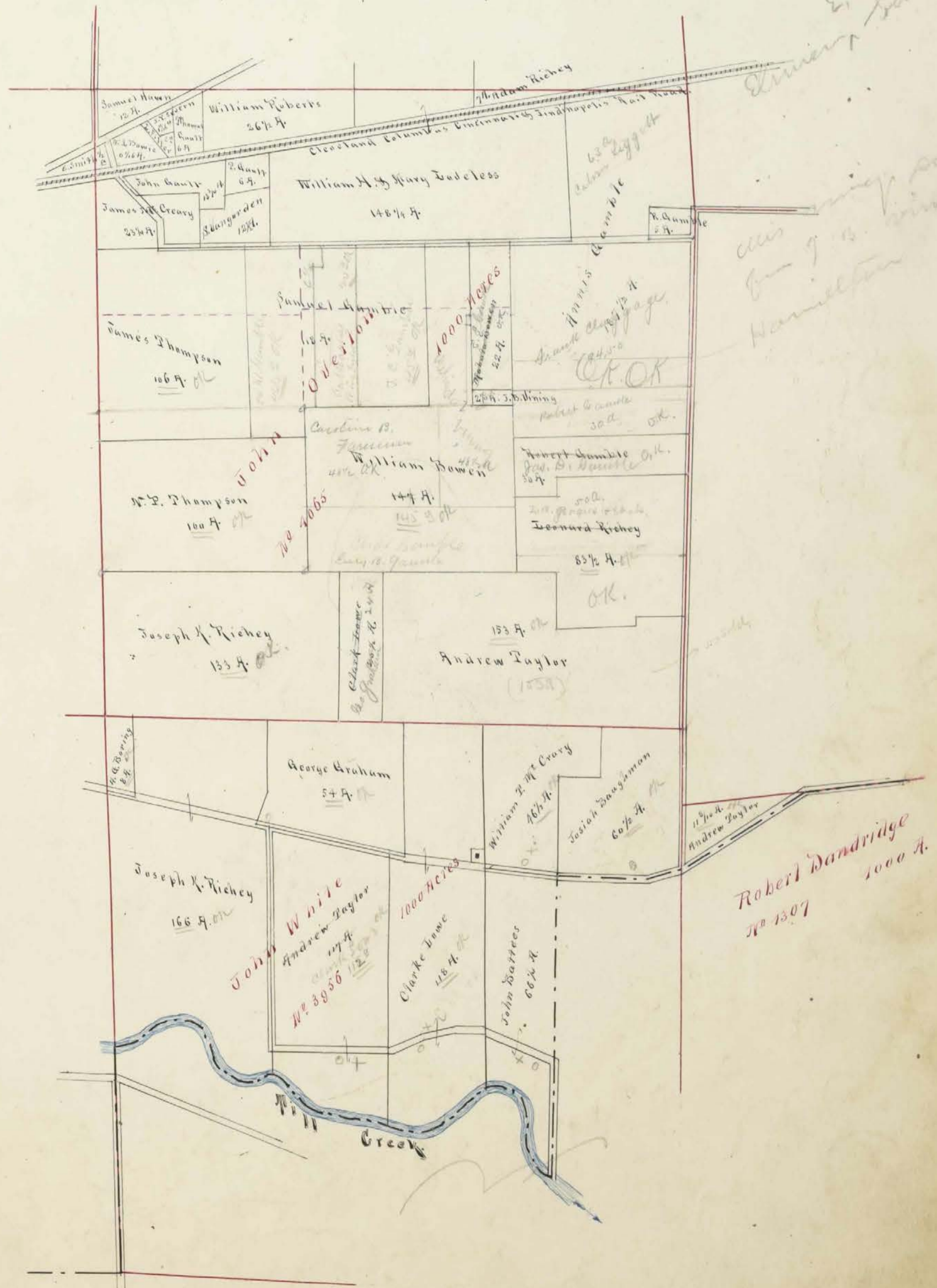
Althuson

John W. Dwyer

Elmer Sample

all in my name  
Jan 9 13  
Hamilton

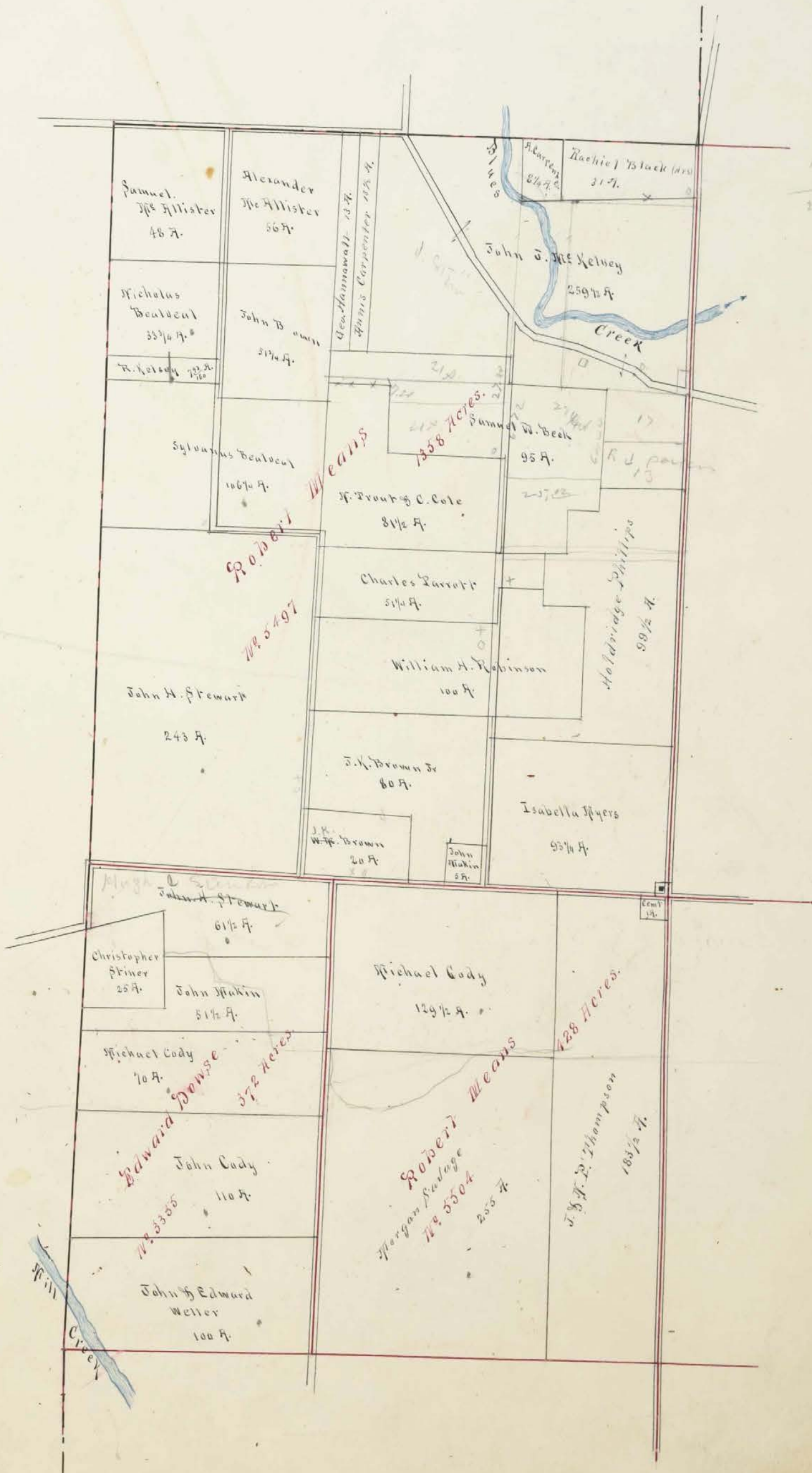
22 1/2  
24  
41  
20  
6 1/2  
123 3/4



Robert Dandridge  
No 1307  
1000 A.

Scale, 80 Poles to an Inch.

9 5 14  
10 12 5  
~~25 1 10~~  
25 1 2



Samuel McAllister  
46 A.

Alexander McAllister  
56 A.

Nicholas Bealock  
33 3/4 A.

John B. ...  
5 1/4 A.

Sylvanus Bealock  
106 1/4 A.

J. Trout & C. Cole  
8 1/2 A.

John H. Stewart  
243 A.

Charles Farret  
5 1/4 A.

William H. Robinson  
100 A.

J. V. Brown Jr  
80 A.

J. V. Brown  
20 A.

Christopher Priner  
25 A.

John Hakin  
5 1/2 A.

Michael Cody  
70 A.

John Cody  
110 A.

John & Edward Weller  
100 A.

Michael Cody  
129 1/2 A.

Robert ...  
205 A.

J. S. P. Thompson  
183 1/2 A.

Geo. Hammawalt  
Harris Carpenter  
13 A.

Richard ...  
2 1/4 A.

Richard ...  
3 1/2 A.

John D. McKelvey  
259 1/2 A.

Samuel W. Beck  
95 A.

Holdridge Phillips  
99 1/2 A.

Isabella Myers  
93 1/4 A.

MEANS  
358 ACRES  
No. 5497

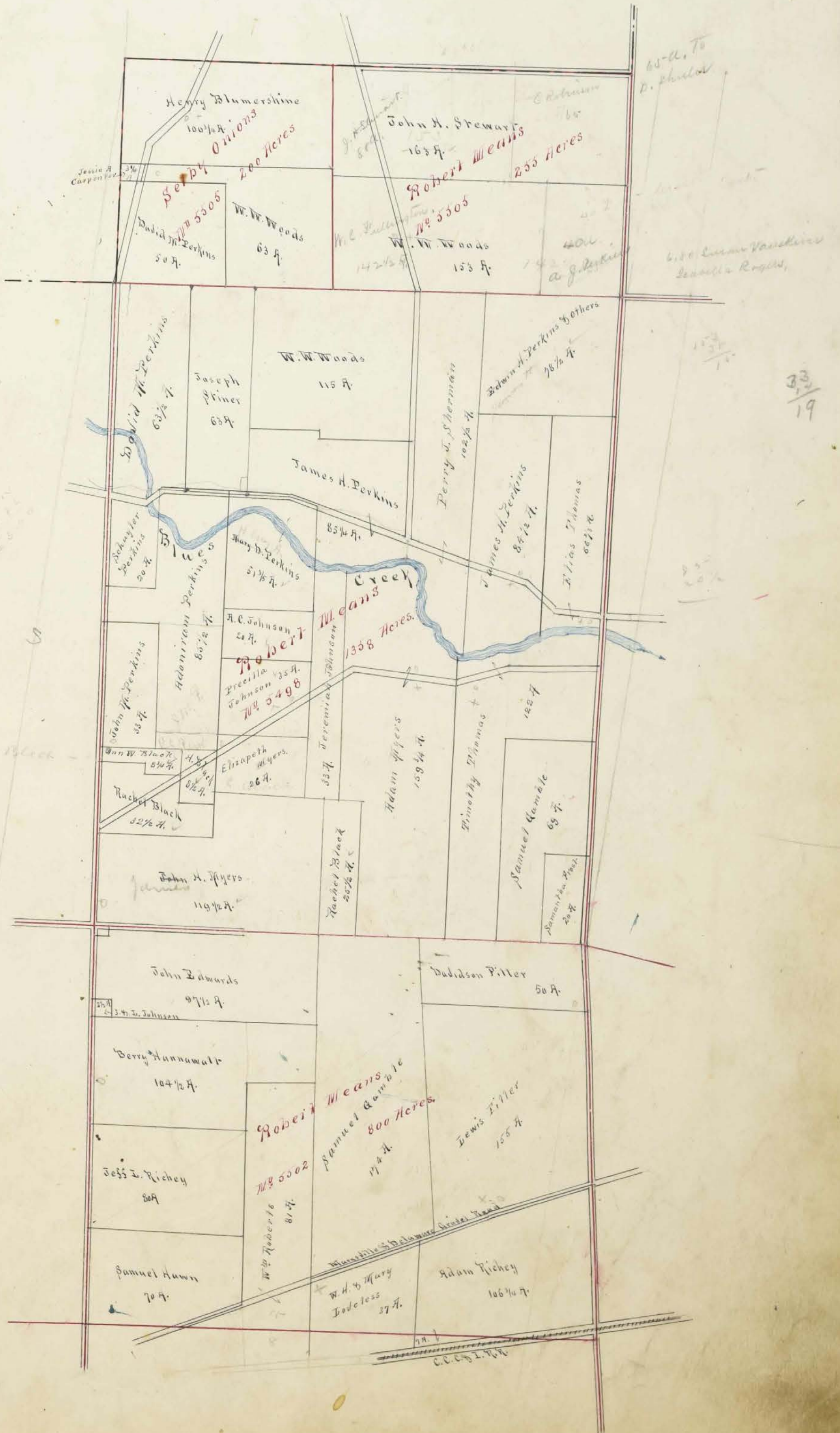
Dawson  
372 ACRES  
No. 3355

MEANS  
428 ACRES  
No. 5504

13 1/4  
21 1/2

46

Scale, 80 Poles to an Inch.



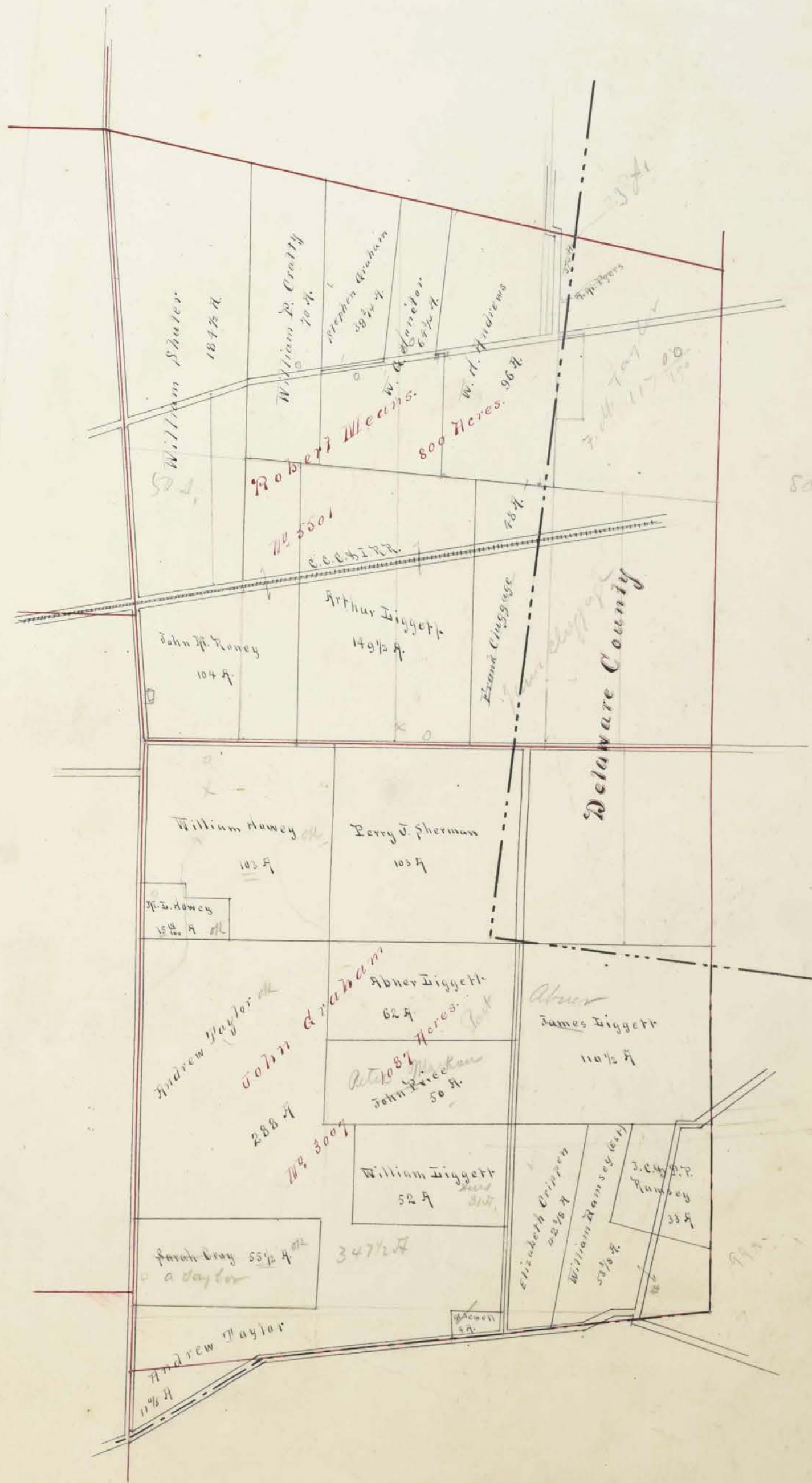
33  
19

107 1/2 A. Black

65-A. To D. Shulda

650. Susan Vandine  
Susanna Rogers

Scale, 80 Poles to an Inch.



258  
50.68  
245.52  
34

H. Maule



Scale, 80 Poles to an Inch.



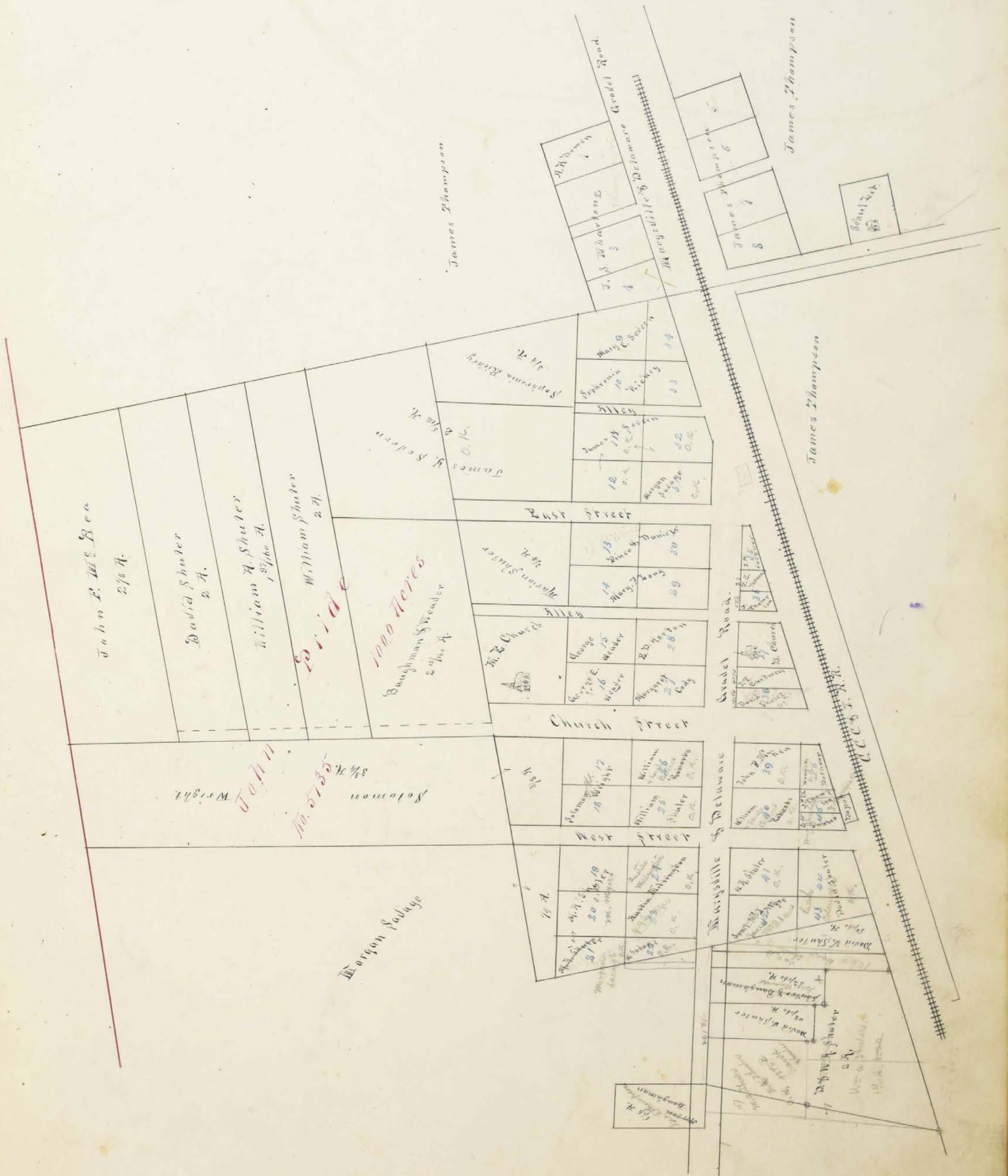
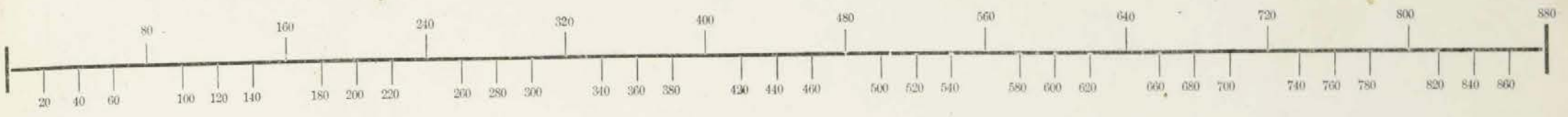
Handwritten notes in the left margin:

70  
27.80  
24.75  
151.00  
12.25  
89.75

Handwritten note on the right margin:

B 44-71-57

Scale, <sup>40</sup> 80 Poles to an Inch.



## Union County, Ohio, for the Year 1880.

Whole No. of Acres.	H.	Value per Acre excluding Buildings.	Total Value of Lands, excluding Buildings.	Value of all Buildings.			Total Value of Lands and Buildings.	Amount Added or Deducted by Co. Board of Equalization.		Total Value as Equalized by Co. Board.	Amount Added or Deducted by State Board of Equalization.		Total Value as Equalized by State Board.	REMARKS.
				Houses.	Mills.	Other Buildings.		Added Dollars.	Deducted Dollars.		Added Dollars.	Deducted Dollars.		
Acres.	H.	Dollars.	Dollars.	Dollars.	Dollars.	Dollars.	Dollars.	Dollars.	Dollars.	Dollars.	Dollars.	Dollars.	Dollars.	

*Surley* No. 1307 Page No. 2  
*Surley* No. 3007 Page No. 5  
*Surley* No. 3355 Page No. 3  
*Surley* No. 3956 Page No. 2  
*Surley* No. 4065 Page No. 2  
*Surley* No. 5135 Page No. 1  
*Surley* No. 5497 Page No. 3  
*Surley* No. 5498 Page No. 4  
*Surley* No. 5499 Page No. 6  
*Surley* No. 5501 Page No. 5  
*Surley* No. 5502 Page No. 4  
*Surley* No. 5504 Page No. 3  
*Surley* No. 5505 Page No. 4  
*Surley* No. 5505 Page No. 4  
*Surley* No. 5869 Page No. 6  
*Surley* No. 9028 Page No. 1

Assessment of Real Property in *Dover* Township,

Union County, Ohio, for the Year 1880.

For Plate of Lands see Page	DESCRIPTION OF PROPERTY				No. of Acres of Land Classified,						Whole No. of Acres.	Value per Acre excluding Buildings.	Total Value of Lands, excluding Buildings.	Value of all Buildings.			Total Value of Lands and Buildings.	Amount Added or Deducted by Co. Board of Equalization.		Total Value as Equalized by Co. Board.	Amount Added or Deducted by State Board of Equalization.		Total Value as Equalized by State Board.	REMARKS.					
					Arable and Plow Land.		Meadow and Pasture Land.		Uncultivated and Wood Land.					Houses.	Mills.	Other Buildings.		Added Dollars.	Deducted Dollars.		Added Dollars.	Deducted Dollars.							
					Acres.	H.	Acres.	H.	Acres.	H.				Dollars.	Dollars.	Dollars.		Dollars.	Dollars.		Dollars.	Dollars.							
	In WHOSE NAME ASSESSED.	No. of Entry.	Original Quantity.	Original Proprietor.	Water Course.	Acres.	H.	Acres.	H.	Acres.	H.	Acres.	H.	Dollars.	Dollars.	Dollars.	Dollars.	Dollars.	Dollars.	Dollars.	Dollars.	Dollars.	Dollars.	Dollars.	Dollars.	Dollars.	Dollars.		
	<i>McIn Francis</i>	<i>5569</i>	<i>1000</i>	<i>W.H. Bunting</i>	<i>Blue Creek</i>	<i>21</i>		<i>6</i>		<i>24</i>		<i>51</i>	<i>16</i>	<i>516</i>	<i>100</i>			<i>916</i>		<i>916</i>		<i>76</i>		<i>840</i>					
	<i>Andrew W.H.</i>	<i>5501</i>	<i>500</i>	<i>Robert Means</i>	<i>Mill Creek</i>	<i>15</i>		<i>43</i>		<i>38</i>		<i>96</i>	<i>19</i>	<i>1824</i>				<i>1824</i>		<i>1824</i>		<i>157</i>		<i>1673</i>					
	<i>Pattin John</i>	<i>3956</i>	<i>1000</i>	<i>John White</i>	<i>Mill Creek</i>	<i>25</i>		<i>29</i>		<i>15 1/2</i>		<i>66 1/2</i>	<i>23</i>	<i>1457</i>	<i>225</i>	<i>500</i>	<i>1882</i>		<i>1882</i>		<i>156</i>		<i>1726</i>						
	<i>Beck Samuel W.</i>	<i>5097</i>	<i>1358</i>	<i>Robert Means</i>	<i>Blue Creek</i>	<i>45</i>		<i>33</i>		<i>18</i>		<i>50</i>	<i>19</i>	<i>1805</i>	<i>200</i>		<i>2005</i>		<i>2005</i>		<i>166</i>		<i>1839</i>					<i>1/2 to Samuel W. Beek</i>	
	<i>Davis William</i>	<i>4065</i>	<i>1000</i>	<i>John Coveton</i>	<i>Mill Creek</i>	<i>70</i>		<i>36</i>		<i>41</i>		<i>147</i>	<i>19</i>	<i>2793</i>	<i>200</i>		<i>2993</i>		<i>2993</i>		<i>248</i>		<i>2745</i>					<i>1/2 to Michael Young</i>	
	<i>Burton James</i>	<i>9028</i>	<i>1000</i>	<i>John White</i>	<i>Mill Creek</i>	<i>18</i>		<i>62</i>		<i>20</i>		<i>100</i>	<i>22</i>	<i>2200</i>		<i>150</i>	<i>2350</i>		<i>2350</i>		<i>195</i>		<i>2155</i>						
	<i>Boring Alan G.</i>	<i>3956</i>	<i>1000</i>	<i>John White</i>	"					<i>8</i>		<i>8</i>	<i>23</i>	<i>184</i>			<i>184</i>		<i>184</i>		<i>15</i>		<i>169</i>						
	<i>Davis</i>	<i>9028</i>	<i>1000</i>	<i>John White</i>	"	<i>41</i>		<i>57</i>				<i>92</i>	<i>23</i>	<i>2116</i>	<i>250</i>	<i>500</i>	<i>2866</i>		<i>2866</i>		<i>240</i>		<i>2626</i>						
	<i>Baughman John</i>	<i>9125</i>	<i>1000</i>	"	"	<i>13</i>		<i>25</i>		<i>12</i>		<i>50</i>	<i>22</i>	<i>1100</i>	<i>200</i>	<i>150</i>	<i>1300</i>		<i>1300</i>		<i>108</i>		<i>1192</i>						
	<i>Baughman Jacob</i>	<i>9125</i>	<i>1000</i>	"	"	<i>17</i>		<i>43</i>		<i>10</i>		<i>69</i>	<i>22</i>	<i>1518</i>	<i>150</i>	<i>150</i>	<i>1818</i>		<i>1818</i>		<i>157</i>		<i>1667</i>						
	<i>Black Rachel</i>	<i>5098</i>	<i>1358</i>	<i>Robert Means</i>	<i>Blue "</i>	<i>20</i>		<i>38</i>				<i>58</i>	<i>20</i>	<i>1160</i>	<i>200</i>		<i>1360</i>		<i>1360</i>		<i>113</i>		<i>1247</i>						
	<i>Black Rachel (Miss)</i>	<i>5097</i>	<i>1358</i>	"	"	<i>23</i>		<i>8</i>				<i>31</i>	<i>20</i>	<i>620</i>	<i>175</i>		<i>795</i>		<i>795</i>		<i>66</i>		<i>729</i>						
	<i>Baughman George</i>	<i>3956</i>	<i>1000</i>	<i>John White</i>	<i>Mill Creek</i>	<i>35</i>		<i>10</i>		<i>15 1/2</i>		<i>60 1/2</i>	<i>21</i>	<i>1270</i>	<i>125</i>		<i>1395</i>		<i>1395</i>		<i>116</i>		<i>1279</i>						
	<i>Black Henry</i>	<i>5098</i>	<i>1358</i>	<i>Robert Means</i>	<i>Blue Creek</i>	<i>4</i>		<i>4 1/2</i>				<i>8 1/2</i>	<i>20</i>	<i>170</i>			<i>170</i>		<i>170</i>		<i>14</i>		<i>156</i>						
	<i>Black Ann W.</i>	<i>5098</i>	<i>1358</i>	"	"	<i>6</i>		<i>2 3/4</i>				<i>5 3/4</i>	<i>24</i>	<i>210</i>	<i>125</i>		<i>335</i>		<i>335</i>		<i>28</i>		<i>307</i>						
	<i>Davis Mahala</i>	<i>4065</i>	<i>1000</i>	<i>John Coveton</i>	<i>Mill "</i>	<i>8</i>		<i>14</i>				<i>22</i>	<i>19</i>	<i>418</i>			<i>418</i>		<i>418</i>		<i>35</i>		<i>383</i>						
	<i>Davis A.P.C.</i>	<i>5369</i>	<i>1000</i>	<i>W.H. Bunting</i>	<i>Blue "</i>	<i>20</i>		<i>10</i>		<i>77 3/4</i>		<i>107 3/4</i>	<i>16</i>	<i>1724</i>	<i>150</i>	<i>100</i>	<i>1974</i>		<i>1974</i>		<i>164</i>		<i>1810</i>						
	<i>Deabral Nicholas</i>	<i>5097</i>	<i>1358</i>	<i>Robert Means</i>	"	<i>16</i>		<i>3</i>		<i>14 3/4</i>		<i>32 3/4</i>	<i>20</i>	<i>675</i>			<i>675</i>		<i>675</i>		<i>56</i>		<i>619</i>						
	<i>Deard Joseph R.</i>	<i>5369</i>	<i>1000</i>	<i>W.H. Bunting</i>	"	<i>18</i>		<i>16</i>		<i>20</i>		<i>54</i>	<i>16</i>	<i>864</i>			<i>864</i>		<i>864</i>		<i>72</i>		<i>792</i>						
	<i>Davis</i>	<i>5369</i>	<i>1000</i>	"	"			<i>2</i>		<i>3</i>		<i>5</i>	<i>16</i>	<i>80</i>			<i>80</i>		<i>80</i>		<i>4</i>		<i>73</i>						
	<i>Davis John</i>	<i>5369</i>	<i>1000</i>	"	"			<i>3</i>		<i>7</i>		<i>10</i>	<i>16</i>	<i>160</i>			<i>160</i>		<i>160</i>		<i>13</i>		<i>147</i>						
	<i>Dunkley J.C.</i>	<i>5125</i>	<i>1000</i>	<i>John Price</i>	<i>Mill "</i>			<i>3</i>				<i>3</i>	<i>25</i>	<i>75</i>	<i>1000</i>		<i>1075</i>		<i>1075</i>		<i>89</i>		<i>986</i>						
	<i>Davis J.R. Jr.</i>	<i>5097</i>	<i>1358</i>	<i>Robert Means</i>	<i>Blue Creek</i>	<i>27</i>		<i>38</i>		<i>15</i>		<i>50</i>	<i>20</i>	<i>1600</i>			<i>1600</i>		<i>1600</i>		<i>133</i>		<i>1467</i>						
	<i>Davis John</i>	<i>5097</i>	<i>1358</i>	"	"	<i>8</i>		<i>31</i>		<i>12 3/4</i>		<i>57 1/4</i>	<i>19</i>	<i>984</i>	<i>100</i>		<i>1084</i>		<i>1084</i>		<i>90</i>		<i>994</i>						
	<i>Davis Benj. F.</i>	<i>5369</i>	<i>1000</i>	<i>W.H. Bunting</i>	"	<i>15</i>				<i>8</i>		<i>23</i>	<i>18</i>	<i>414</i>			<i>414</i>		<i>414</i>		<i>34</i>		<i>380</i>						
	<i>Demmings Henry</i>	<i>5525</i>	<i>200</i>	<i>Robert Means</i>	"	<i>67</i>		<i>13</i>		<i>20 3/4</i>		<i>100 3/4</i>	<i>20</i>	<i>2015</i>	<i>250</i>	<i>100</i>	<i>2365</i>		<i>2365</i>		<i>196</i>		<i>2169</i>						
	<i>Davis Samuel</i>	<i>5099</i>	<i>1358</i>	"	"	<i>30</i>		<i>71</i>		<i>15 1/2</i>		<i>116 1/2</i>	<i>19</i>	<i>2214</i>		<i>150</i>	<i>2364</i>		<i>2364</i>		<i>196</i>		<i>2168</i>						
	<i>Davis Charles E.</i>	<i>5369</i>	<i>1000</i>	<i>W.H. Bunting</i>	"	<i>12 1/2</i>						<i>12 1/2</i>	<i>20</i>	<i>250</i>	<i>200</i>		<i>450</i>		<i>450</i>		<i>37</i>		<i>418</i>						<i>all to Henry C. Davis</i>
	<i>Davis</i>	<i>5099</i>	<i>1358</i>	<i>Robert Means</i>	"	<i>1 3/4</i>						<i>1 3/4</i>	<i>20</i>	<i>35</i>			<i>35</i>		<i>35</i>		<i>3</i>		<i>32</i>						
	<i>Davis W.H.</i>	<i>5097</i>	<i>1358</i>	"	"			<i>20</i>				<i>20</i>	<i>20</i>	<i>400</i>	<i>175</i>	<i>100</i>	<i>675</i>		<i>675</i>		<i>56</i>		<i>619</i>						
	<i>Davis Nancy J.</i>	<i>4065</i>	<i>1000</i>	<i>John Coveton</i>	<i>Mill Creek</i>	<i>6 1/6</i>						<i>6 1/6</i>	<i>23</i>	<i>140</i>	<i>150</i>		<i>290</i>		<i>290</i>		<i>24</i>		<i>266</i>						<i>1/2 to Annan Shuler</i>
	<i>Davis James</i>	<i>5125</i>	<i>1000</i>	<i>John Price</i>	"			<i>9 1/6</i>				<i>9 1/6</i>	<i>24</i>	<i>10</i>	<i>200</i>		<i>210</i>		<i>210</i>		<i>17</i>		<i>193</i>						
	<i>Deabral Sylvanus</i>	<i>5097</i>	<i>1358</i>	<i>Robert Means</i>	<i>Blue Creek</i>	<i>50</i>				<i>56 1/4</i>		<i>106 1/4</i>	<i>17</i>	<i>1806</i>	<i>100</i>		<i>1906</i>		<i>1906</i>		<i>158</i>		<i>1748</i>						

Assessment of Real Property in Dover Township,

Union County, Ohio, for the Year 1880.

For Plats of Lands see Page	IN WHOSE NAME ASSESSED.	DESCRIPTION OF PROPERTY			No. of Acres of Land Classified.			Whole No. of Acres.	Value per Acre excluding Buildings.	Total Value of Lands, excluding Buildings.	Value of all Buildings.			Total Value of Lands and Buildings.	Amount Added or Deducted by Co. Board of Equalization.		Total Value as Equalized by Co. Board.	Amount Added or Deducted by State Board of Equalization.		Total Value as Equalized by State Board.	REMARKS.				
		No. of Entry.	Original Quantity.	Original Proprietor.	Water Course.	Arable and Plow Land.					Meadow and Pasture Land.		Uncultivated and Wood Land.		Houses.	Mills.		Other Buildings.	Added Dollars.			Deducted Dollars.	Added Dollars.	Deducted Dollars.	
						Acres.	H.				Acres.	H.	Acres.												H.
	Cray Sarah	3009	1087	John Graham	Mill Creek	22	18 1/2	15	55 1/2	20	1110	100		1210			1210	100	1110	all to Anthony A. Mcnard					
	Edwards John	3355	572	Edward Lewis	"	46	17	47	110	21	2310	150		2460			2460	204	2256						
	Edwards Michael	3355	572	"	"	19	20	31	70	20	1400			1400			1400	116	1284						
	Bayne	5135	1077	John Dille	"	31	8 1/8		39 1/8	25	978	350		1328			1328	110	1218	all to Samuel R. Berger					
	Same	5514	1125	Robert Means	"	38	50	41 1/2	129 1/2	21	2719	400	100	3219			3219	267	2952						
	Cratty W.P.	5511	500	"	"	15	25	30	70	18	1260	350		1610			1610	131	1476						
	Carpenter Cassie S.	5515	200	Sally Collins	Blue Creek	3 1/4			3 1/4	20	65			65			65	5	60						
	Crippen Elizabeth	5007	1087	John Graham	Mill "	10		33 3/8	42 3/8	19	805			805			805	67	738						
	Cluggage Frank	5511	500	Robert Means	"	20	28		48	22	1056			1056			1056	88	968						
	Carpenter Annis	5497	1345	"	Blue Creek		8	13 3/4	27 3/4	16	348			348			348	29	319						
	Edwards John	5503	800	Robert Means	Mill Creek	21	56	20 1/2	97 1/2	20	1950			1950			1950	162	1788						
	Fuller Lewis Dr.	5502	500	Robert Means	Mill Creek	100	35	20	135	21	3255	400	200	3855			3855	320	3535						
	Same	5735	1000	John Pitt	"			75 1/2	75 1/2	24	12	225			237		237	20	217	owned to Lewis Fuller Jr					
	Same Dr	1065	1000	John Christ	"	5			5	22	44			44			44	4	40						
	Fuller Harriett	5502	500	Robert Means	"	20	6	24	40	20	1000	350		1350			1350	112	1238						
	Guinn Sarah	5025	1000	John Christ	"	30	20	25	70	20	1500			1500			1500	125	1375						
	Farris Henry A.	5200	1349	Robert Means	Blue Creek	34	91	30	135	21	3255	300	150	3705			3705	308	3397						
	Fole Michael	5860	1000	W.B. Bunting	Side River	50	20	46 1/2	116 1/2	19	2213	300	150	2663			2663	221	2442						
	Fole Sarah			"	"	24	6	20	30	17	850	150		1000			1000	88	917						
	Fogle William			"	"	25	15	12 1/2	52 1/2	17	890	150		1040			1040	86	954						
	Fogle Rufus W.			"	"	8		10 3/4	15 3/4	18	334	200	100	634			634	53	581						
	Fogle Eli			"	"	12	20	10	42	17	714	100		814			814	68	746						
	Frost Samantha	5408	7558	Robert Means	Blue Creek	7		13	20	20	400			400			400	33	367						
	Fuller Odame	5735	1000	John Pitt	Mill Creek			3 1/4	3 1/4	24	18	175		193			193	16	177						
	Fushwat Sarah E.			"	"	50	30	20	100	22	2200	360	400	2950			2950	245	2705						
	Fushwat William			"	"	40	14	45	99	22	2178			2178			2178	181	1997	all to Geo Busher					
						627 1/4	487 7/8	497 3/8	1623 1/8		32864	4050	1100	38014			38014	3157	34857						

Assessment of Real Property in Dover Township,

Union County, Ohio, for the Year 1880.

For Plats of Lands see Page	DESCRIPTION OF PROPERTY				No. of Acres of Land Classified.						Whole No. of Acres.	Value per Acre excluding Buildings.	Total Value of Lands, excluding Buildings.	Value of all Buildings.			Total Value of Lands and Buildings.	Amount Added or Deducted by Co. Board of Equalization.		Total Value as Equalized by Co. Board.	Amount Added or Deducted by State Board of Equalization.		Total Value as Equalized by State Board.	REMARKS.	
					Arable and Plow Land.		Meadow and Pasture Land.		Uncultivated and Wood Land.					Houses.	Mills.	Other Buildings.		Added Dollars.	Deducted Dollars.		Added Dollars.	Deducted Dollars.			
	In Whose Name Assessed.	No. of Entry.	Original Quantity.	Original Proprietor.	Water Course.	Acres.	H.	Acres.	H.	Acres.				H.	Acres.	H.		Dollars.	Dollars.		Dollars.	Dollars.			Dollars.
	Green Charles	5199	1358	Robert Means	Blues Creek	58		30		40 1/2			25 1/2	19	2814	100		2914			2914	242	2672		
	Groff John H.	5255	1000	John Reid	Mill Creek	1		3/4					7 1/2	25	31	150		181			181	15	166		
	Gumbel Samuel	5295	1365	Robert Means	Blues Creek	10		44		15			69	19	1311			1311			1311	109	1202		
	Same	5502	500	"	"	62		32		80			77	21	3654	300	200	4154			4154	345	3809		
	Same	5065	1000	John Carter	"	45		16		57			77	21	2478	125		2603			2603	216	2887		
	Gamble August	"	"	"	"	100		59		28 1/2			57 1/2	21	3937	250	150	4337			4337	360	3977		
	Gault Thomas	"	"	"	"	3		9					12	22	264	100		364			364	30	334		
	Gault John	"	"	"	"	8		5 3/4					12	22	302			302			302	25	277		
	Gibson John	5135	1000	John Reid	"	67		17 1/2					84 1/2	22	1859	150	100	1909			1909	158	1757		
	Gilchrist Samuel	5025	"	John Reid	"	11 1/2							71 1/2	22	253			253			253	21	232		
	Gamble Robert	5065	"	John Carter	"	20				15			35	21	735			735			735	61	674	53 by James King	
	Graham George	5066	"	John Reid	"	25		14		15			52	21	1134	150		1284			1284	107	1177	53 by James King	
	Graham Stephen	5201	500	Robert Means	"	5		20		14 3/4			59 3/4	18	715	150		865			865	72	793	53 by James King	
	Grove William	5007	1057	John Graham	Mill Creek	20		58		25			102	20	2060	200	100	2360			2360	196	2164		
	Haber Wm L.	"	"	"	"	11				4 1/2			15 1/2	20	309	175		484			484	40	444		
	Hawes Samuel	5502	500	Robert Means	"	18		30		22			70	22	1540	250	100	1890			1890	157	1733		
	Same	2065	1000	John Carter	"					13			12	22	264			264			264	22	242		
	Hannawalt Benj	5502	500	Robert Means	"	40		52		13 1/2			101 1/2	22	2299	350		2649			2649	220	2429		
	Hatch Eliza	5125	1000	John Reid	"	33		75		14			122	22	2684	300		2984			2984	248	2736		
	Hunter W. S.	5501	500	Robert Means	"	35		21		8 3/4			64 3/4	19	1230		200	1430			1430	119	1311		
	Henderson Thomas	5025	1000	John Reid	"	34		46		20			100	22	2200	300		2500			2500	228	2292		
	Hannawalt George	5497	1365	Robert Means	Blues Creek	4		4		5			43	20	260			260			260	22	238		
	Johnson John & George	5522	500	Robert Means	Mill Cr					2 1/2			2 1/2	25	62	125		187			187	16	171		
	Johnson Adam C.	5498	1358	"	Blues Crk	19				1			20	18	360			360			360	30	330		
	Johnson Lucilla	5498	1358	"	"	29				6			35	19	665	100	200	965			965	80	885		
	Johnson Jeremiah	5498	1358	"	"	20				13			35	19	627	200	100	927			927	77	850		
	Kelsey Rhoads	5497	1368	Robert Means	Blues Creek					7 1/2			7 1/2	15	113			113			113	9	104		
						609 1/2		535 3/4		404 1/2				1651 3/4		34160	3475	1150	38585			38585	3205	35380	

Assessment of Real Property in Dover Township,

Union County, Ohio, for the Year 1880.

For Plats of Lands see Page	DESCRIPTION OF PROPERTY				No. of Acres of Land Classified.						
	IN WHOSE NAME ASSESSED.	No. of Entry.	Original Quantity.	Original Proprietor.	Water Course.	Arable and Flow Land.		Meadow and Pasture Land.		Uncultivated and Wood Land.	
						Acres.	H.	Acres.	H.	Acres.	H.
	Liggett Abner Sr	5869	1000	H B Bunting	Scioto River			20		22 1/2	
	Same	5400	1338	Robert Mabus	Blues Creek	59		197		25 7/8	
	Liggett Abner Jr	5007	1087	John Graham	Mill Creek			47		15	
	Lingbrake Levi	5028	1000	John Hunt	"	90		73		105 1/2	
	Same Josiah	6028	1000	"	"	47		33		3 3/4	
	Same Mark	4065	1000	John Carter	"					25 1/2	
	Same	5456	1000	John White	"	44		49		25	
	Locks H. M. & Mary	5065	1000	John Carter	"	45		88		15 1/4	
	Same	5502	800	Robert Mabus	"	17		20			
	Liggett James	5007	1087	John Graham	"	74		6		30 1/2	
	Liggett William	5007	1087	"	"	34		10		8	
	Liggett Arthur	5501	800	R Mabus	"	79		35		85 1/2	
	McCraw H. F.	5066	1000	John White	Mill Creek	21		15		10 1/2	
	Wick John	5255	377	Edward Mabus	"	30		3		18 1/2	
	Same	5497	1355	Robert Mabus	Blues Creek	5					
	McCraw John Jr	5497	1355	"	"	66		42		151 1/2	
	McCraw Samuel	5497	1355	"	"	13		25		8	
	McCraw Alexander	5497	1355	"	"	8		20		28	
	Wyers James A	5498	1355	"	"	65		25		29 1/2	
	McCraw James	5065	1000	John Carter	Mill Creek	10		13 1/4			
	McCraw John F	5195	1000	John White	"			2 1/8			
	Wyers Adam	5408	1358	Robert Mabus	Blues Creek	90		80		39 3/4	
	Wyers Isabella	5497	1358	"	"	20		63		10 1/4	
	Wyers Elizabeth Jr	5498	1358	"	"	18		8			
	Wyers Rebecca Sr	5725	1000	John White	Mill Creek	50		70		61 3/4	

Whole No. of Acres.	Value per Acre excluding Buildings.	Total Value of Lands, excluding Buildings.	Value of all Buildings.			Total Value of Lands and Buildings.	Amount Added or Deducted by Co. Board of Equalization.	Total Value as Equalized by Co. Board.	Amount Added or Deducted by State Board of Equalization.		Total Value as Equalized by State Board.	REMARKS.
			Houses.	Mills.	Other Buildings.				Added Dollars.	Deducted Dollars.		
12 1/2	18	765			765		765		63	702 1/2	To W. H. Perkins	
25 7/8	22	6201	450		350	7001	7001		581	6420		
64	20	1240				1240	1240		103	1137		
205 1/2	22	5577				5577	5577		468	5714		
58 3/4	21	1759	150		150	2059	2059		171	1888		
26 1/2	21	535				535	535		44	491		
118	22	2596	450		150	3196	3196		265	2931		
48 1/2	22	3261				3261	3261	148		3409		
37	22	814	900		125	939	939		140	1094		
70 1/2	20	2210				2210	2210		183	2027		
52	20	1040				1040	1040		86	954		
149 1/2	22	2289	600		400	3289	3289		273	3016		
46 1/2	22	1828	200		150	1978	1978		114	1264		
54 1/2	20	1030				1030	1030		85	945		
5	20	100				100	100		8	92	all to John Price	
309 1/2	20	5190	350			5540	5540		460	5080	to Rachel Perkins	
38	20	960				960	960		80	880	to Margaret McHenry	
56	20	1120			100	1220	1220		101	1119		
79 1/2	21	2509	1100			3609	3609		300	3309		
28 1/2	22	571	250			760	760		63	697		
2 1/8	24	51				51	51		4	47		
59 3/4	20	3195	300		250	3745	3745		311	3434		
98 1/2	20	1865				1865	1865		155	1710	all to Samuel Myers	
26	19	494	200			694	694		58	636		
157 3/4	23	4180	600		400	5180	5180		430	4750		

877 919 7/8 632 3/8

2436 1/2 50485 4650 2075 57239 948 58187 4829 53358

Assessment of Real Property in *Dover* Township,

Union County, Ohio, for the Year 1880.

For Plats of Lands see Page	DESCRIPTION OF PROPERTY				No. of Acres of Land Classified.			Whole No. of Acres.	Value per Acre, excluding Buildings.	Total Value of Lands, excluding Buildings.	Value of all Buildings.			Total Value of Lands and Buildings.	Amount Added or Deducted by Co. Board of Equalization.		Total Value as Equalized by Co. Board.	Amount Added or Deducted by State Board of Equalization.		Total Value as Equalized by State Board.	REMARKS.	
					Arable and Plow Land.	Meadow and Pasture Land.	Uncultivated and Wood Land.				Houses.	Mills.	Other Buildings.		Added Dollars.	Deducted Dollars.		Added Dollars.	Deducted Dollars.			
	In Whose Name Assessed.	No. of Entry.	Original Quantity.	Original Proprietor.	Water Course.	Acres.	H.				Acres.	H.	Acres.		H.	Acres.		H.	Dollars.			Dollars.
	Parkins David M.	3303	300	Edith Orms	Blues Creek	15		35		50	16	800				800			66	734	Wm. H. Woods	
	Same	3405	335	Robert Means	"		18	45 1/2		63 1/4	17	1077				1077			90	789	Wm. H. Woods	
	Parkins John M.	3498	1348	"	"	9	4	20		33	21	695	150			843			70	773	Wm. H. Woods	
	Parkins William H.	3569	1000	W. B. Bunting	South River	55	38	67 1/4		160 1/2	20	3265	1250			4905			407	4498	Wm. H. Woods	
	Philips Aldredge	3497	1365	Robert Means	Blues Creek	31	44	24 1/2		19 1/2	22	2189	225			200	2614			217	2897	Wm. H. Woods
	Brace John	3007	4087	John Graham	Mill Creek	14	14	20		20	16	800				800			66	734	Wm. H. Woods	
	Brace Charles	3497	1365	Robert Means	Blues Creek	6	33	12 1/2		27 1/4	20	1025		100		1125			93	1032	Wm. H. Woods	
	Parkins Schuyler	3308	1368	"	"	4	16			20	21	420	250			150	820			68	752	Wm. H. Woods
	Parkins James H.	3498	1368	"	"	47	97	25 3/4		189 3/4	21	3565	450			300	4315			358	3957	Wm. H. Woods
	Parkins Elizabeth C.	3809	1000	W. B. Bunting	South River		15	12 3/4		27 3/4	16	444				444			37	407	Wm. H. Woods	
	Parkins Henry A.	3809	1000	"	"		20	6 1/2		26 1/2	18	477				477			40	437	Wm. H. Woods	
	Parkins Mark A.	3308	1368	Robert Means	Blues Creek	31	44	24 1/2		51 3/4	18	928				928			77	857	Wm. H. Woods	
	Parkins Adamant J.	3398	1368	"	"	45	25	15 1/2		85 1/2	21	1795				1795			149	1646	Wm. H. Woods	
	Parkins Lydia	3809	1000	W. B. Bunting	South River		10	19 3/4		28 3/4	16	460				460			38	422	Wm. H. Woods	
	Parkins Thomas B.	3809	1000	"	"	15	25	45 1/2		82 3/4	17	1453				1453			121	1332	Wm. H. Woods	
	Parkins Edwin H. G. et al.	3498	1368	Robert Means	Blues Creek	15	10	58 1/2		78 1/2	15	1178				1178			98	1080	Wm. H. Woods	
	Yost W. H.	3321	800	"	Mill Creek			3 1/2		3 1/2	21	68				68			6	62	Wm. H. Woods	
	Raney John M.	3307	800	Robert Means	Mill Creek	33	45	26		105	22	2288	500			800	3088			256	2832	Wm. H. Woods
	Rickey Stephen	3185	7000	John Prid	"			3 1/4		3 1/4	24	18				18			1	17	Wm. H. Woods	
	Rickey Joseph S.	3926	7000	John West	"	46	90	30		168	24	3984				3984	664		386	4262	Wm. H. Woods	
	Same	9028	7000	John Hunt	"	30	178	20		228	22	5016	500		200	5716	225		498	5451	Wm. H. Woods	
	Same	3065	7000	John Crutten	"	17	25	91		133	20	2660				2660			221	2439	Wm. H. Woods	
	Rickey Jeff C.	3802	800	Robert Means	"	38	27	15		80	22	1860	200			2060			191	1889	Wm. H. Woods	
	Rittenhouse C. W.	3499	1368	"	"	45	25	58 1/2		126 1/4	19	2377		300		2677	125		232	2070	Wm. H. Woods	
	Robison John Jr.	3185	7000	John Prid	"	25	47	30		112	22	2464				2464			205	2259	Wm. H. Woods	
	Robinson John S.	3499	1368	R. Means	Blues Creek	18	100 1/4			178 1/2	22	2602	800		300	3702	118		317	3580	Wm. H. Woods	
	Robinson C. S.	3499	1368	"	"	15	18	2		30	21	735	400			1135			94	1041	Wm. H. Woods	
	Rittenhouse L. S.	3499	1368	"	"	100	200	65 1/4		165 1/4	21	7675	800		400	8875	365		767	8443	Wm. H. Woods	
	Rittenhouse James	3499	1368	"	"	21	12 1/8			53 1/8	22	623				623			52	571	Wm. H. Woods	
	Russell Joseph	9028	7000	John Hunt	Mill Creek	29	56	15		103	22	2200	300		150	2650			220	2430	Wm. H. Woods	
	Rickey Edward	3065	7000	John Crutten	"	30	33	20 1/2		83 1/2	20	1670				1670			139	1531	Wm. H. Woods	
	Rickey Adam	3065	7000	"	"			7		7	22	154				154			13	141	Wm. H. Woods	
	Same	3602	8000	Robert Means	Mill Creek	71	30	15 3/4		106 3/4	22	2384				2384			198	2186	Wm. H. Woods	
	Roberts William	3322	800	"	"	23	40	18		87	22	1782				1782			148	1634	Wm. H. Woods	
	Same	3065	7000	John Crutten	"	6	20 1/2			26 1/2	22	583	150		100	833			69	764	Wm. H. Woods	
	Raney William	3307	1087	John Graham	"	23	6	14 3/8		53 3/8	20	1067	450			1517			126	1391	Wm. H. Woods	
	Robinson W. H.	3497	1368	Robert Means	Blues Creek	70	10	20		150	20	2000	125		200	2325			193	2132	Wm. H. Woods	
	Raney J. B. & T. B.	3007	1087	John Graham	Mill Creek	15	13	5		23	20	660				660			55	605	Wm. H. Woods	
						921	1372 3/8	870 1/2		3175 1/4		65345	6500		3200	75081	1500		76581	6357	70224	Wm. H. Woods



Assessment of Real Property in Dover Township,

Union County, Ohio, for the Year 1880.

Table with multiple columns: For Plats of Lands sec. Page, DESCRIPTION OF PROPERTY, No. of Acres of Land Classified, Value per Acre, Total Value of Lands and Buildings, Amount Added or Deducted by Co. Board of Equalization, Total Value as Equalized by Co. Board, Amount Added or Deducted by State Board of Equalization, Total Value as Equalized by State Board, REMARKS.

7 Assessment of Real Property in *Dover* Township,

Union County, Ohio, for the Year 1880.

For Plats of Lands see Page	IN WHOSE NAME ASSESSED.	No. of Entry.	Original Quantity.	Original Proprietor.	Water Course.	No. of Acres of Land Classified.						Whole No. of Acres.	Value per Acre including Buildings.	Total Value of Lands, excluding Buildings.	Value of all Buildings.			Total Value of Lands and Buildings.	Amount Added or Deducted by Co. Board of Equalization.		Total Value as Equalized by Co. Board.	Amount Added or Deducted by State Board of Equalization.		Total Value as Equalized by State Board.	REMARKS.		
						Arable and Plow Land.		Meadow and Pasture Land.		Uncultivated and Wood Land.					Houses.	Mills.	Other Buildings.		Added Dollars.	Deducted Dollars.		Dollars.	Added Dollars.			Deducted Dollars.	Dollars.
						Acres.	H.	Acres.	H.	Acres.	H.																
	Vanguard Samuel	4665	1000	John Custer	Mill Creek	8		4	1/2			12 1/2	29	275	125			400			400		83	367			
	Viking J.B.	4665	1000	"	"	2	1/4					2 1/4	19	48				48			48		4	39			
	Night Samuel	5126	1000	John Bick	Mill Creek					4	1/8	1	25	103				103			103		9	91			
	Woods Samuel	5400	1338	Robert Means	Blue Creek					11	1/3	11 1/3	20	226				226			226		19	207			
	Woods Samuel J.	5869	1670	H. B. Bunker	Ind. Riv.	25		8		29	1/2	62 1/2	19	1187	250			1437			1437		119	1318			
	Woods W.H.	5805	200	S. Dennis	Blue Creek	40				33		63	20	1260	275			1535			1535		127	1408			
	Same	5408	1338	Robert Means	"	25		80		10		14	21	2415				2415			2415		200	2215			
	Same	5603	243	"	"	46		48		64		183	20	3060	400	100		3560			3560		295	3265	40 <sup>+</sup> acres of western town 8 1/2 <sup>+</sup> acres of eastern town		
	Williams Samuel	5135	1000	John Bick	Mill Creek	1						1	25	25	200			225			225		19	206			
	Woods W. Roughton	5135	1000	"	"					3	1/2	3 1/2	25	52				52			52		4	48			
	Williams Margaret	5136	1000	"	"					4		1	25	100				100			100		8	92			
	Hall Edward W. Jr.	4136	1000	"	"	24				8	1/2	32 1/2	28	747				747			747		62	685			
	Same	3243	272	Edward Case	"	24		56		20		100	28	2300	300	150		2750			2750		228	2522			
						194	1/4	221	1/2	146	1/2	563	253 900	11793	1350	250	14573	14575			14575		1127	12466			

Assessment of Real Property in *Dover* Township,

Union County, Ohio, for the Year 1880.

For Plats of Lands see Page	IN WHOSE NAME ASSESSED.	DESCRIPTION OF PROPERTY				No. of Acres of Land Classified.						Whole No. of Acres.	Value per acre excluding Buildings.	Total Value of Lands, excluding Buildings.	Value of all Buildings.			Total Value of Lands and Buildings.	Amount Added or Deducted by Co. Board of Equalization.		Total Value as Equalized by Co. Board.	Amount Added or Deducted by State Board of Equalization.		Total Value as Equalized by State Board.	REMARKS.
		No. of Entry.	Original Quantity.	Original Proprietor.	Water Course.	Arable and Flow Land.	Meadow and Pasture Land.	Uncultivated and Wood Land.	Houses.	Mills.	Other Buildings.				Added Dollars.	Deducted Dollars.	Added Dollars.		Deducted Dollars.						
		Acres.	H.	Acres.	H.	Acres.	H.	Dollars.	Dollars.	Dollars.	Dollars.				Dollars.	Dollars.	Dollars.								
	<i>Sub-District School</i>				<i>Millcreek</i>																				
	" " <i>No. 1</i>				"							<i>1</i>			<i>450</i>										
	" " <i>" 2</i>				"							<i>1/4</i>			<i>400</i>										
	" " <i>" 3</i>				<i>Dunes Run</i>							<i>1/4</i>			<i>500</i>										
	" " <i>" 4</i>				<i>Millcreek</i>							<i>1</i>			<i>450</i>										
	" " <i>" 5</i>				<i>Dunes Run</i>							<i>1/4</i>			<i>400</i>										
	" " <i>" 6</i>				<i>Blues creek</i>							<i>1/4</i>			<i>400</i>										
	" " <i>" 7</i>				"							<i>1/2</i>			<i>450</i>										
					<i>Churches</i>																				
					<i>M. C. Church Dover</i>							<i>1</i>			<i>1000</i>										
					<i>Baptist Church "</i>							<i>1/4</i>			<i>1000</i>										
					<i>Baptist Church Blues creek</i>							<i>1/4</i>			<i>1000</i>										
					<i>Grave Yards</i>																				
					<i>Mt. Kemble</i>							<i>1</i>			<i>150</i>										
					<i>Buxton</i>							<i>1</i>			<i>150</i>										
					<i>Recapitulation of Real Property Dover Tp.</i>																				
	<i>Page</i>																								
	<i>1</i>				<i>629</i>	<i>7/2</i>	<i>610</i>	<i>3/4</i>	<i>451</i>	<i>3/4</i>		<i>1695</i>	<i>7/8</i>	<i>35787</i>	<i>3275</i>	<i>1000</i>	<i>1550</i>	<i>38832</i>							
	<i>"</i>				<i>627</i>	<i>1/4</i>	<i>487</i>	<i>7/8</i>	<i>497</i>	<i>3/8</i>		<i>1623</i>	<i>7/8</i>	<i>32864</i>	<i>4050</i>		<i>1100</i>	<i>38014</i>							
	<i>"</i>				<i>624</i>	<i>1/2</i>	<i>535</i>	<i>3/4</i>	<i>424</i>	<i>1/8</i>		<i>1657</i>	<i>3/4</i>	<i>34160</i>	<i>3475</i>		<i>1150</i>	<i>38585</i>							
	<i>"</i>				<i>877</i>		<i>919</i>	<i>7/8</i>	<i>632</i>	<i>7/8</i>		<i>2430</i>	<i>1/2</i>	<i>50485</i>	<i>4650</i>		<i>2075</i>	<i>57239</i>							
	<i>"</i>				<i>921</i>		<i>1372</i>	<i>7/8</i>	<i>870</i>	<i>1/2</i>		<i>5175</i>	<i>7/40</i>	<i>65345</i>	<i>6500</i>		<i>3200</i>	<i>75045</i>							
	<i>"</i>				<i>919</i>	<i>7/8</i>	<i>1029</i>	<i>1/2</i>	<i>1101</i>	<i>3/20</i>		<i>3049</i>	<i>203</i>	<i>62834</i>	<i>4200</i>	<i>1800</i>	<i>1700</i>	<i>71134</i>							
	<i>"</i>				<i>194</i>	<i>1/4</i>	<i>221</i>	<i>1/2</i>	<i>146</i>	<i>1/2</i>		<i>563</i>	<i>553</i>	<i>11793</i>	<i>1550</i>		<i>250</i>	<i>14598</i>							
																									<i>Av. Land per acre \$20.60+</i>
																									<i>Av. Land + Buildings \$23.47+</i>
					<i>4777</i>	<i>37</i>	<i>5171</i>	<i>117</i>	<i>4104</i>	<i>7/8</i>		<i>14213</i>	<i>119</i>	<i>292668</i>	<i>27700</i>	<i>2300</i>	<i>11025</i>	<i>333442</i>							

For Plats of Lands see Page	DESCRIPTION OF PROPERTY					No. of Acres of Land Classified.									
						Arable and Flow Land.		Meadow and Pasture Land.		Uncultivated and Wood Land.		Whole No. of Acres.		Value per Acre including Buildings.	Total Value of Lands, excluding Buildings.
						Acres.	H.	Acres.	H.	Acres.	H.	Acres.	H.		
IN WHOSE NAME ASSESSED.	No. of Entry.	Original Quantity.	Original Proprietor.	Water Course.	Acres.	H.	Acres.	H.	Acres.	H.	Acres.	H.	Dollars.	Dollars.	

Whole No. of Acres.	Value per Acre including Buildings.	Total Value of Lands, excluding Buildings.	Value of all Buildings.			Total Value of Lands and Buildings.	Amount Added or Deducted by Co. Board of Equalization.	Total Value as Equalized by Co. Board.	Amount Added or Deducted by State Board of Equalization.	Total Value as Equalized by State Board.	REMARKS.				
			Houses.	Mills.	Other Buildings.										
			Dollars.	Dollars.	Dollars.							Dollars.	Added Dollars.	Deducted Dollars.	Dollars.
Acres.	H.	Dollars.	Dollars.	Dollars.	Dollars.	Dollars.	Dollars.	Dollars.	Dollars.	Dollars.	Dollars.	Dollars.	Dollars.	Dollars.	Dollars.



Assessment of Lots in the Town of New Dover.

Union County, Ohio, for the Year 1880.

For Plats of Lots see Page	DESCRIPTION OF PROPERTY.							Value of Lots. Dollars.	Value of all Buildings.			Total Value of Lots and Buildings. Dollars.	Amount Added or Deducted by Co. Board of Equalization.		Total Value as Equalized by Co. Board. Dollars.	Amount Added or Deducted by State Board of Equalization.		Total Value as Equalized by State Board. Dollars.	REMARKS.			
	IN WHOSE NAME ASSESSED.	ADDITION.	No. of In-Lot.	No. of Out-Lot.	WHAT PART OF LOT.	No. Feet Front.	No. Feet Depth.		Houses.	Mills.	Other Buildings.		Added Dollars.	Deducted Dollars.		Added Dollars.	Deducted Dollars.					
									Dollars.	Dollars.	Dollars.											
	Bowers A.R.	X	1		All																	
	Bowers J.C.		36		Part E. one half	27	60	30	100			130			130		11		119		James Thompson	
	Castro J.T.	X	38		One half	414	132	50	275			325			325		27		298		James Thompson	
	Cody Margaret		37		All	82	132	100	300			400			400		33		367			
	Helmer Joseph H.		35		All	82	132	50	150			200			200		17		183			
	Horton Ed.		38		All	82	132	100	550			350			350		29		321			
	Long Mary T.		1		All	82	132	75			75			75			6		69			
	Same		29		All	82	132	100	275			375			375		31		344			
	McRae John C.		30		All	82	132	100	350	100	550			550			46		594			
	McIntyre Samuel		42		"	82	132	75	150		225			225			19		206			
	Wilmington Amos		23		"	82	132	60			60			60			5		55			
	Same		24		"	82	132	60	125		185			185			15		170			
	Price W. Amos	X	13		All	82	132	50			50			50			4		46		L.B. White	
	Same	X	30		"	82	132	150	500	100	750			750			62		688		Same	
	Pickney Sophronia		10		All	82	132	30			30			30			2		28			
	Same		38		"	82	132	85	200		285			285			21		261			
	Roberts William		26		"	82	132	150	350		500			500			42		488			
	Same		40		"	82	132	60		100	160			160			13		147			
								1325			3025			300		4650			386		4164	

Assessment of Lots in the Town of New Dover

Union County, Ohio, for the Year 1880.

For Plats of Lots see Page	DESCRIPTION OF PROPERTY.	Value of Lots.	Value of all Buildings.			Total Value of Lots and Buildings.	Amount Added or Deducted by Co. Board of Equalization.		Total Value as Equalized by Co. Board.	Amount Added or Deducted by State Board of Equalization.		Total Value as Equalized by State Board.	REMARKS.				
			ADDITION.	No. of In-Lot.	No. of Out-Lot.		WHAT PART OF LOT.	No. Feet Front.		No. Feet Depth.	Dollars.			Dollars.	Dollars.	Dollars.	Dollars.
	IN WHOSE NAME ASSESSED.																
	Sweeney J. W.		11		All	82	132	45			45		4	41			
	Same		37		"	82	132	100	250	100	450		37	413			
	Sweeney Mary C.		9		"	82	132	60			60		5	55			
	Same		34		"	82	132	60	200		260		22	238			
	Sweeney J. W.		42		"	82	132	30			30		2	28			
	Shuler W. C.		14		"	82	132	100	300		400		33	367			
	Shuler David		13		"	160	80	60			60		5	55			
	Same		14		"	160	80	100	300		400		33	367			
	Same		38		N. end half	414	100	100			100		8	92	James Thompson		
	Same		45		West side 1/2	35	96	31			30		2	28			
	Shuler William		24		All	82	132	125	350	300	675		56	619			
	Shuler Maria C.		10		"	82	132	75	100		175		15	160			
	Same		26		"	82	132	50			50		4	46			
	Same		27		"	41	132	30			30		2	28	ad. to Morgan Survey		
	Savage Morgan		32		"	27	132	25			25		2	23			
	Same		31		"	82	132	75			75		6	69			
	Thompson James		36		Part	66 1/2	132	40			40		3	37			
	Same		5		All	82	132	15			15		1	14			
	Same		6		"	82	132	15			15		1	14			
	Same		7		"	82	132	15			15		1	14			
	Same		8		"	82	132	15			15		1	14			
	Same		13		Part	47 1/2	66	40			40		3	37			
	Wade G. Albear		46		All	41	66	40			40		3	37			
	Wester George		15		"	82	132	30			30		2	28			
	Wester George C.		16		"	82	132	75	150		225		19	206			
	Wright Solomon		17		"	82	132	100	400		500		42	408			
	Same		18		"	82	132	85			85		7	78			
	Wharton J. S.		2		"	82	132	15			15		1	14	James Thompson		
	Same		3		"	82	132	15			15		1	14	"		
	Same		4		"	82	132	15			15		1	14	"		
								1580	2050	300	3930		3930	322	3608		





DOVER TP.  
UNION COUNTY  
1880.