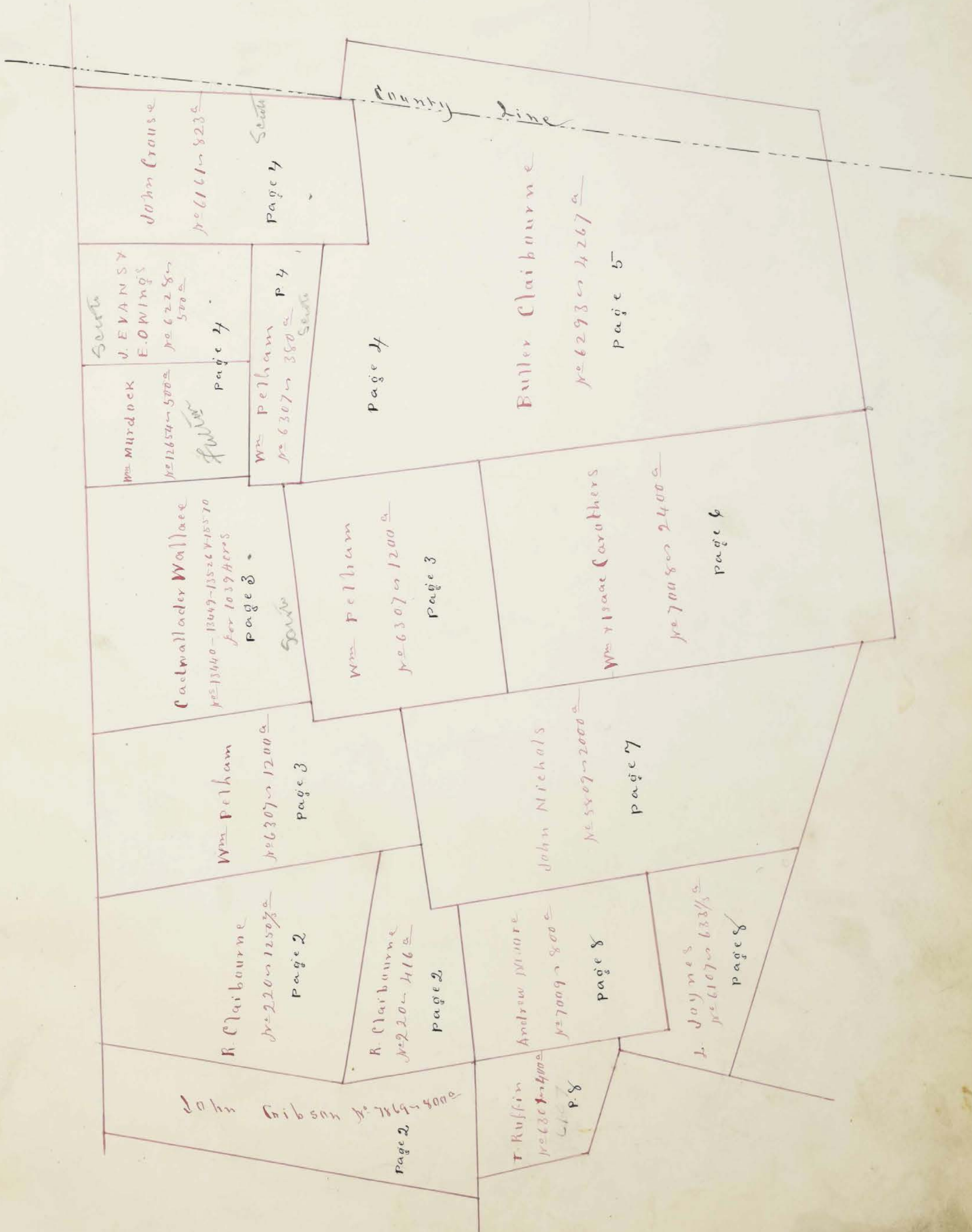
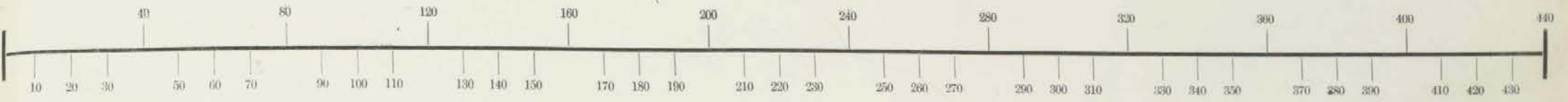


**CLAIBOURNE TP.
UNION COUNTY
1870**

Section, No. _____ Lot _____

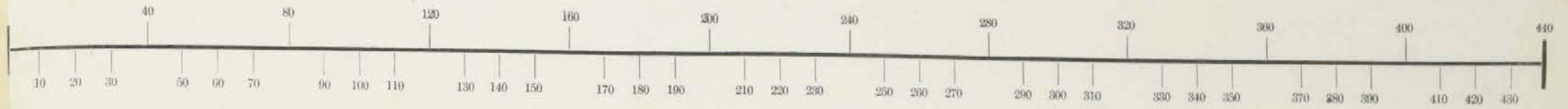
Scale, 40 Rods to an Inch, or 10 Rods to 1-4 Inch.

Clairborne



Section, No. Lot

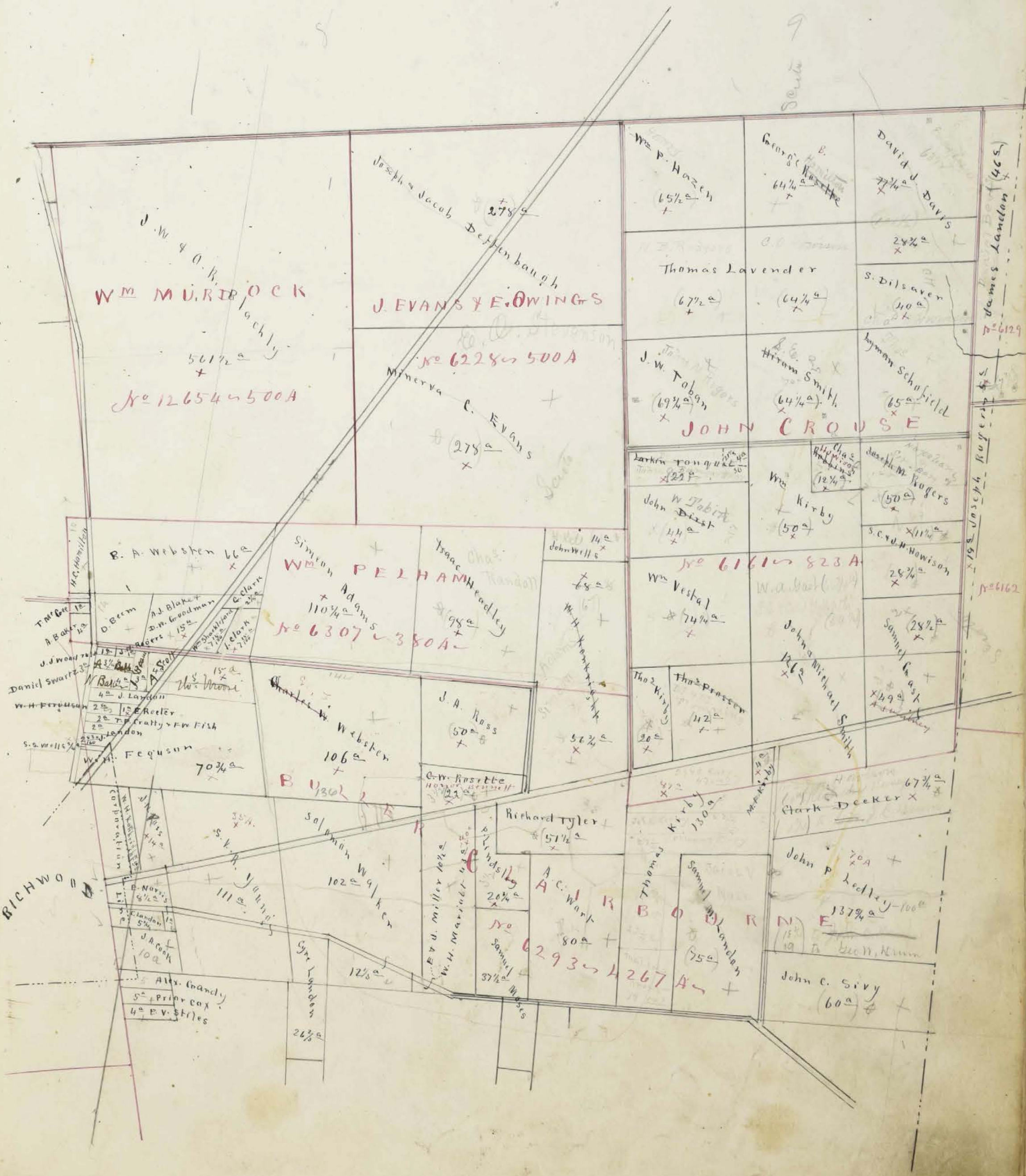
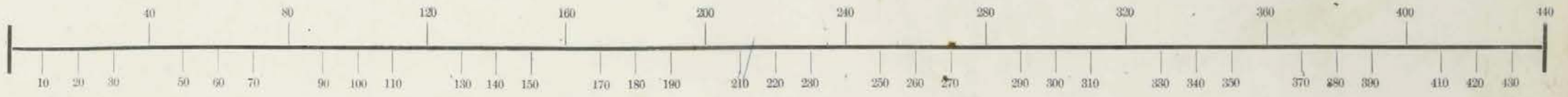
Scale, ⁸⁰40 Rods to an Inch, or ²⁰16 Rods to 1-4 Inch.



100
87
74
14
31

Section, No. Lot

Scale, ⁸⁰40 Rods to an Inch, or ²⁰10 Rods to 1-4 Inch.



Wm MURPHY

J. EVANS & E. OWINGS

Wm PELHAM

JOHN CROUSE

RICHMOND

9

James Lanelon (465)

Joseph Rogers

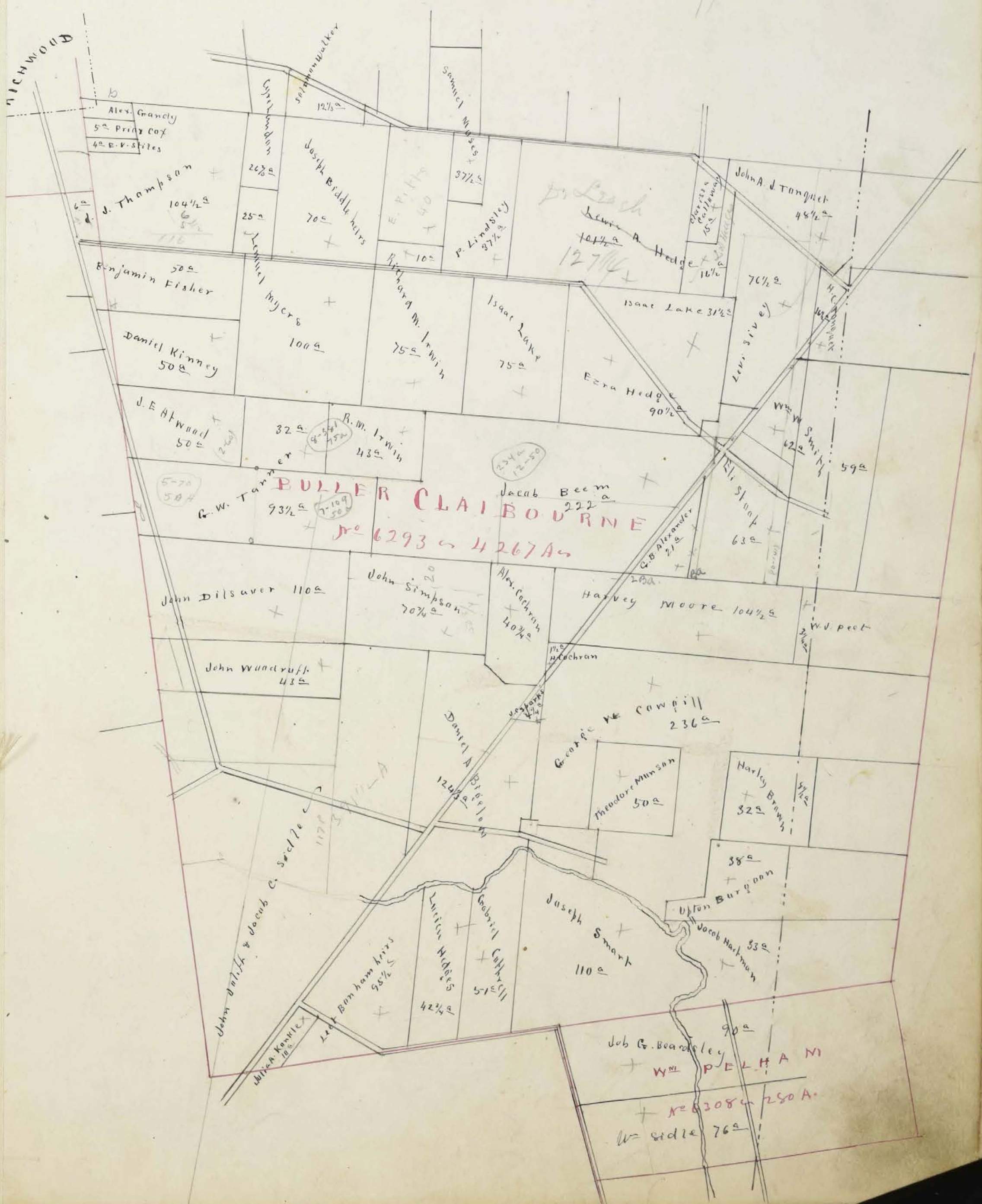
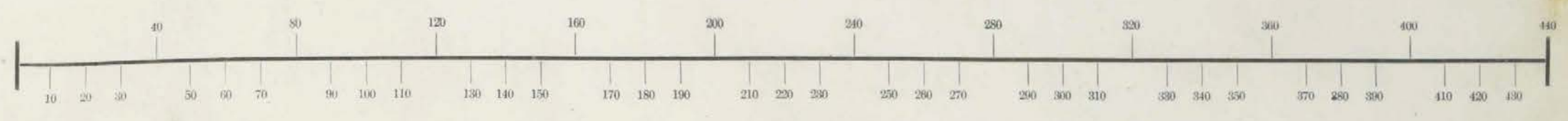
6162

Handwritten notes and acreage on the map include:

- Joseph & Jacob Deffenbaugh 278^a
- Wm P. Hazen 65^a
- George B. Rosette 64^a
- David J. Davis 77^a
- Thomas Lavender 67^a
- Thomas Smith 64^a
- S. Dilsaver 110^a
- James Lanelon (465)

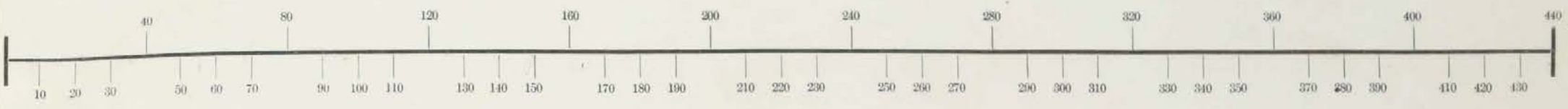
Section, No. _____ Lot _____

Scale, ⁸⁰~~40~~ Rods to an Inch, or ²⁰~~10~~ Rods to 1-4 Inch.

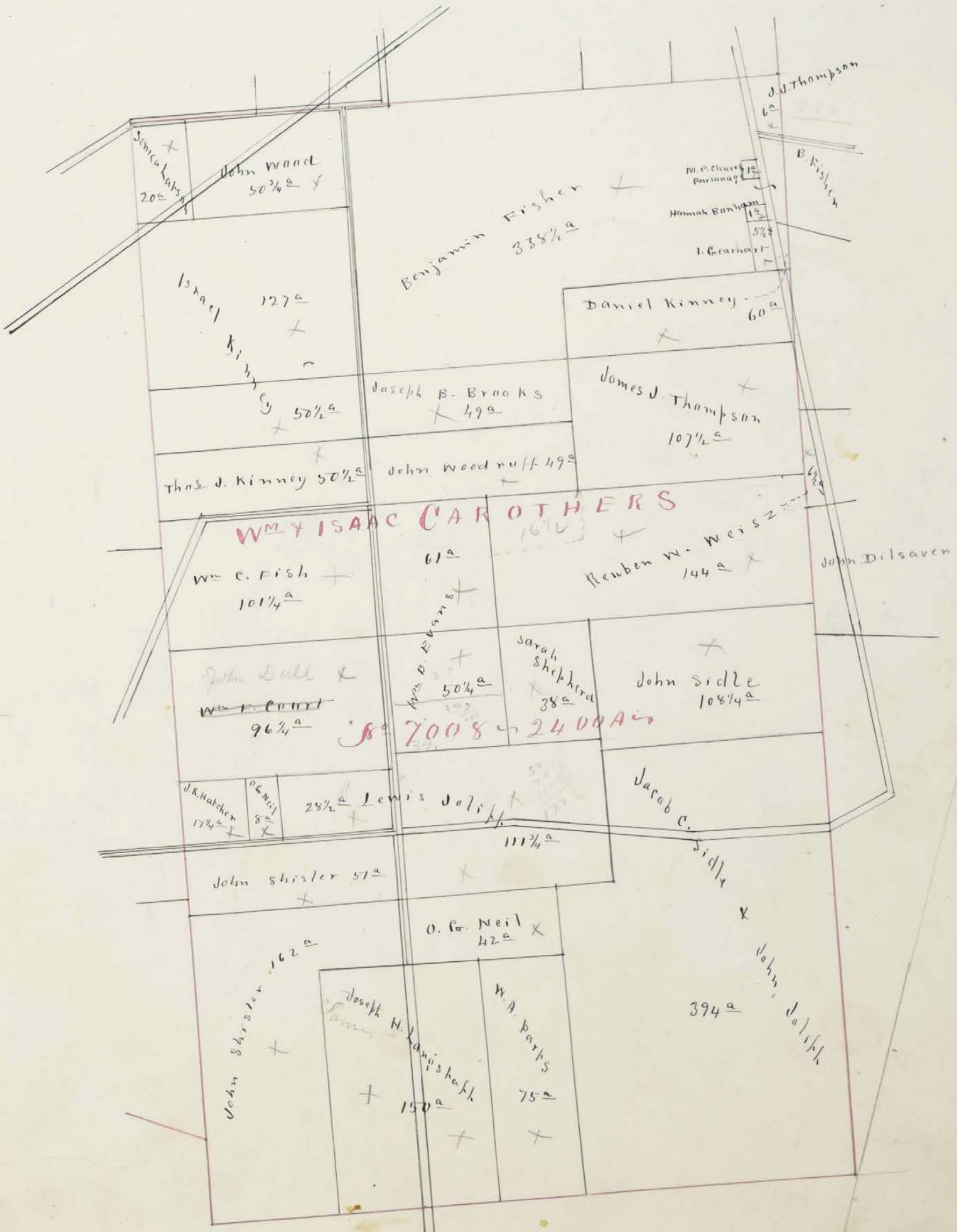


Section, No. Lot

Scale, ⁸⁰40 Rods to an Inch, or ²⁰10 Rods to 1-4 Inch.

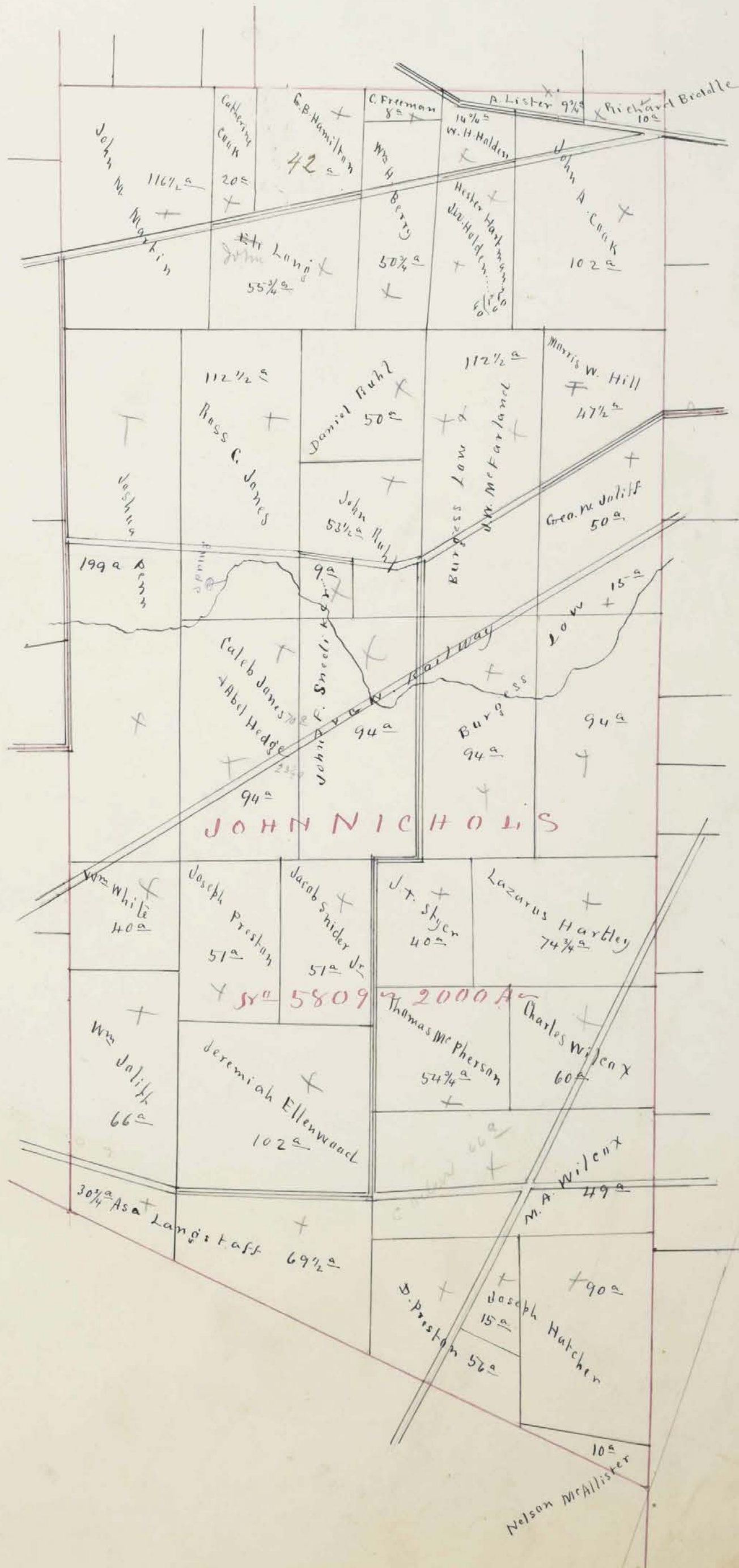
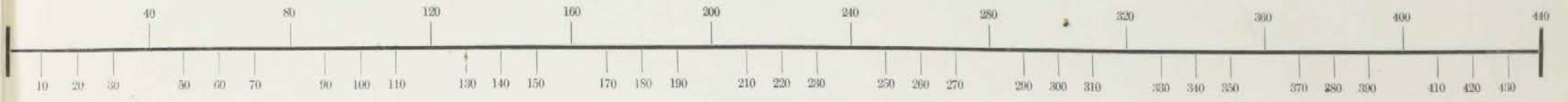


7



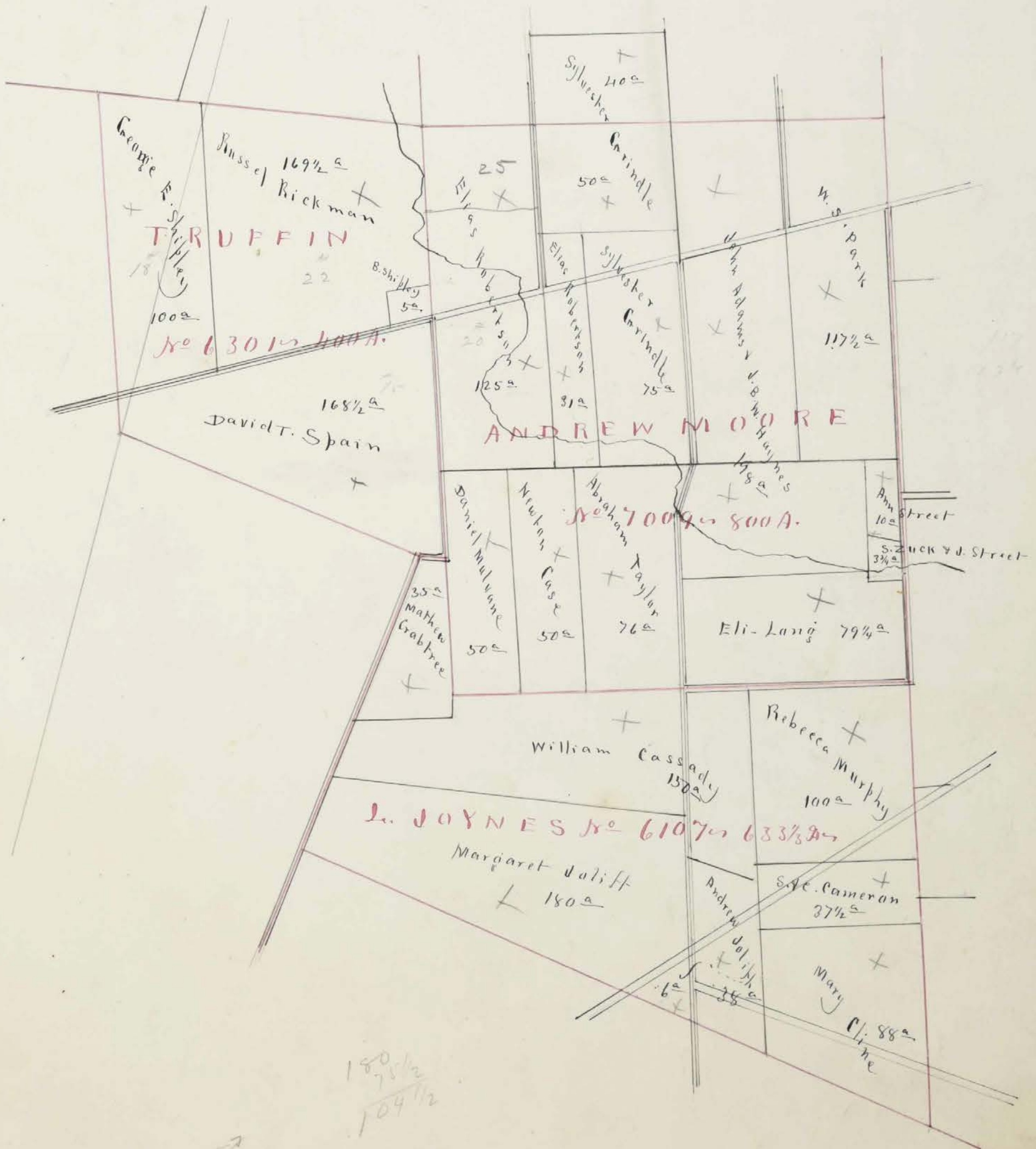
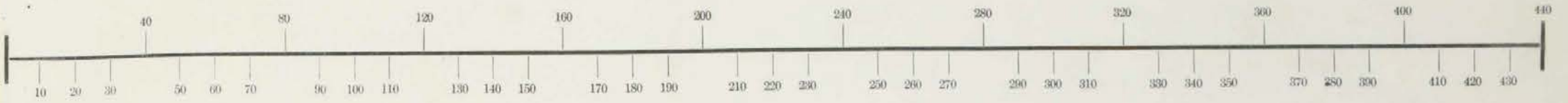
Section, No. _____ Lot _____

Scale, ³⁰40 Rods to an Inch, or ²⁰10 Rods to 1-4 Inch.



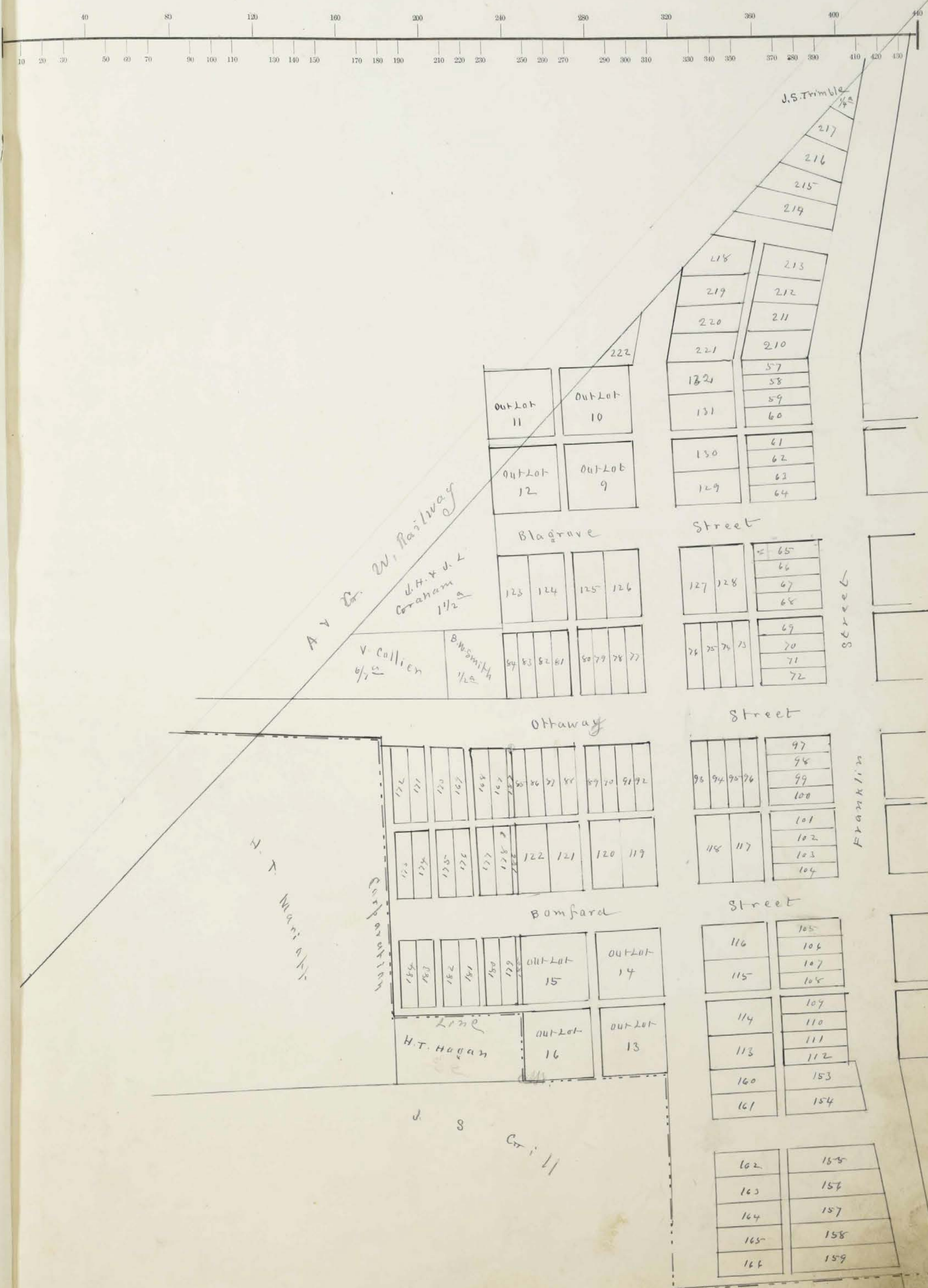
Section, No. Lot

Scale, ⁸⁰40 Rods to an Inch, or ²⁰10 Rods to 1-4 Inch.



Section, No. Lot

Scale, 40 Rods to an Inch, or 10 Rods to 1-4 Inch.



Section, No. Lot

Scale, 40 Rods to an Inch, or 10 Rods to 1-4 Inch.



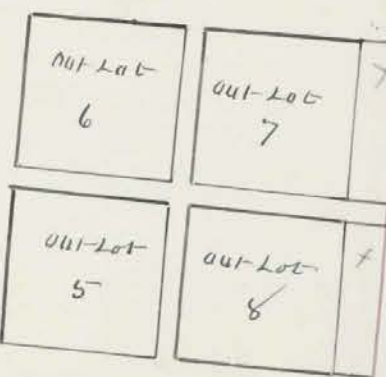
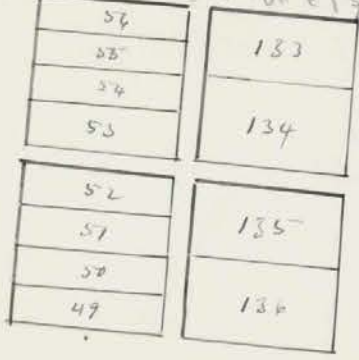
W. H. Ferguson
5/4^a

A & C W Railway

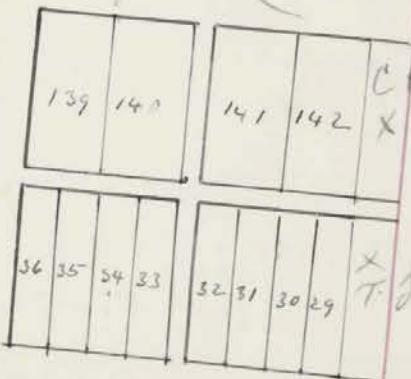
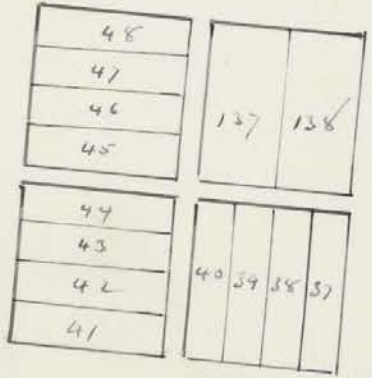


Wm Kyle
1/4
1/8 J P Caraham
1/8 R W Weisz

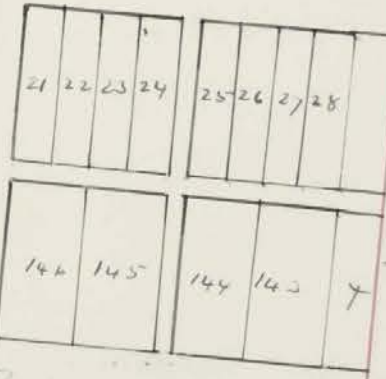
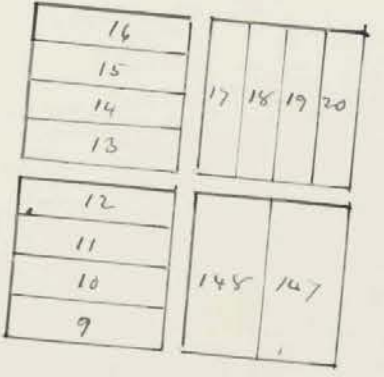
John & Wm Beatty
15^a



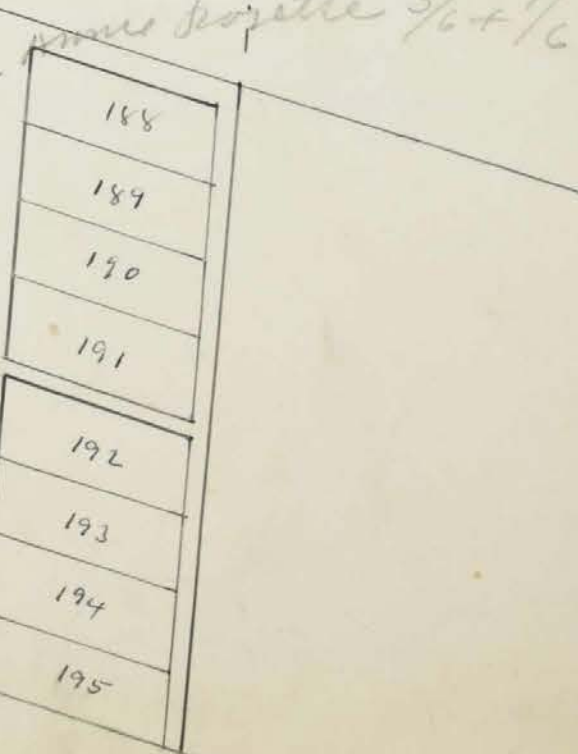
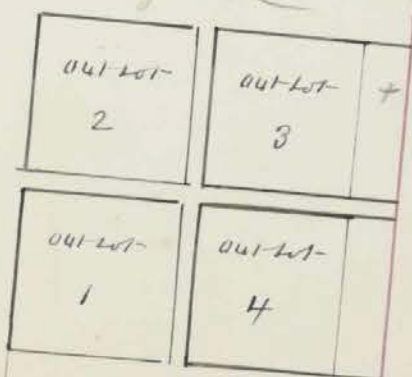
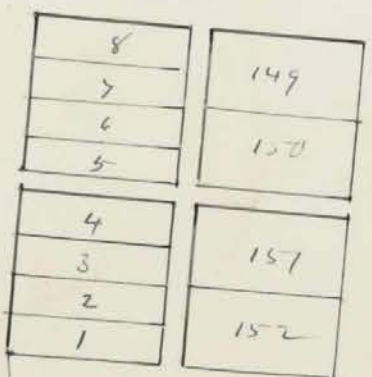
C. B Hubbard
4/5 + 1/5
A J Lewis
5/6 + 1/6



Chuffman 5/6 + 1/6
E. W. Harris
T. J. Wms 5/6 + 1/6
2^a



Gyre L. Moore
T. H. Moore 5/6 + 1/6
13/4^a

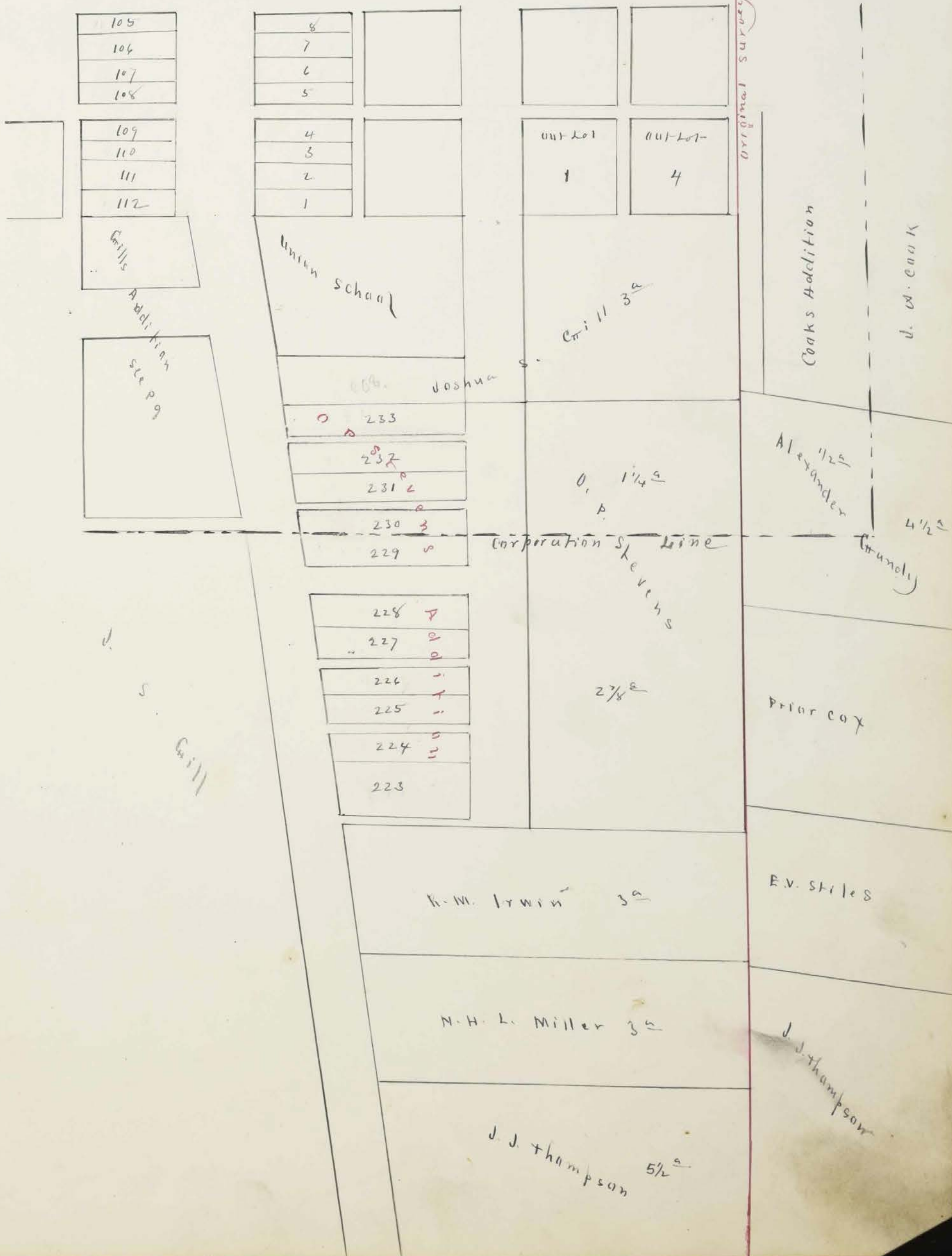


Union School Lot
Joshua

Crill 3^a

Section, No. _____ Lot _____

Scale, 40 Rods to an Inch, or 10 Rods to 1-4 Inch.



Assessment of Real Property in *Clatsburg* Township,

Union County, Ohio, for the Year 1870.

For Plats of all Lands described on this Page, see Page _____ of Plats.	DESCRIPTION OF PROPERTY.			No. of Acres of Land Classified									
	No. of Entry.	Orig'l Quantity.	ORIGINAL PROPRIETOR.	WATER COURSE.	Arable & Plow Land.	Meadow & Pasture Land.	Uncultiv'd & Wood Land.	Acres.	H.	Acres.	H.	Acres.	H.
Atwood John E	6293	4267	B. Clatsburg	Fultoncreek	25	10	15						
Alexander G. B.	6293	4267	B. Clatsburg	Fultoncreek	18	3							
Adams Simon	6307	388	W. Pelham	Fultoncreek	20	45	45 3/4						
Arduam J. J.	6307	380	W. Pelham	Fultoncreek	25	15	17 1/2						
Adams John W. & Haynes J. M.	7009	800	Andrew Moore	Fultoncreek	62	65	71 1/2						
Blackly J. W. & O. B.	12654	500	W. Woodcock	Fultoncreek	10		5 3/4						
Benn Jacob	6293	4267	B. Clatsburg	Fultoncreek	55	81	80						
Biddle Joseph	6293	4267	B. Clatsburg	Fultoncreek	55	12	3						
Burgess Wm. J.	6293	4267	B. Clatsburg	Fultoncreek	16	14	6						
Bonham Leek	6293	4267	B. Clatsburg	Fultoncreek	54	16	25 1/2						
Brown Harley	6293	4267	B. Clatsburg	Fultoncreek	8	15	17 1/2						
Biddle Richard	6307 1200 5809 2000		W. Pelham J. Nichols	Fultoncreek	60 10	81	3						
Benn Oliver	6307 1200		W. Pelham	Fultoncreek	11		3						
Blake A. J. & Gorman M.	6307 1200		W. Pelham	Fultoncreek		15							
Bafer Alexander	6307 1200 6293 4267		W. Pelham B. Clatsburg	Fultoncreek	4		3 1/4						
Bethard William	7869 800		John Gibson	Fultoncreek	31	7	22						
Beardsley J. G.	6308 280		W. Pelham	Fultoncreek	44	12	32 3/4						
Berry W. N.	5819 200		John Nichols	Fultoncreek	20	8	25 3/4						
Brooks Joseph B.	7008 200		Wm. J. Bonther	Fultoncreek	20		39						
Beck Mary A.	6307 1200		W. Pelham	Fultoncreek	16	1							
Bigelow Daniel A.	6293 4267		B. Clatsburg	Fultoncreek	52	20	53 1/4						
Bonham Hannah	7008 200		Wm. J. Bonther	Fultoncreek		1							
Baker Nathan	6293 4267		B. Clatsburg	Fultoncreek		4							
					606	355 1/4	1006 1/2						

Whole No. of Acres.	Value per Acre, including Buildings.	Total Value of Lands, excluding Buildings.	Value of all Buildings.			Total Value of Lands and Buildings.	Amount Added or Deducted by Co. Board of Equalization.	Total Value as Equalized by Co. Board.	Amount Added or Deducted by State Board of Equalization.	Total Value as Equalized by State Board.	REMARKS.	
			Houses.	Mills.	Other Buildings.							
Acres.	H.	Dollars.	Dollars.	Dollars.	Dollars.	Dollars.	Added Dollars.	Deducted Dollars.	Dollars.	Added Dollars.	Deducted Dollars.	Dollars.
50	30	1500				1500			1500			1500
21	30	630				630			630			76 554
110 3/4	32	3544			100	3644			3644			437 3207
57 1/2	32	1840	100			1940			1940			233 1707
198	31	4158	100			4258			4258			511 3747
56 1/2	15	10098				10098			10098			1212 9386
222	27	5994	400		200	6594			6594			791 5803
70	32	2240	100			2340			2340			281 2059
36	37	972	100			1072			1072			129 943
95 1/2	30	2865			100	2965			2965			356 2609
40 1/2	23	938	100			1033			1033			124 909
74	30	2220	100			2320			2320			278 2042
10	31	310				310			310			37 273
14	50	700	200			900			900			108 792
15	35	525				525			525			63 462
4	50	200	100		100	400			400			48 362
3 1/4	50	187				187			187			22 165
50	19	950	100			1050			1050			126 924
88 3/4	30	2662	250		150	3062			3062			367 2695
50 3/4	30	1522				1522			1522			183 1339
49	28	1372	200			1572			1572			189 1383
17	20	340				340			340			41 299
124 1/4	28	3486	100		100	3686			3686			442 3244
1	30	30	200			230			230			28 202
4	55	220				220			220			26 194
1967 3/4		49498	2150		750	52398			52398			6299 4610

Assessment of Real Property in *Claiborne* Township,

Union County, Ohio, for the Year 1870.

For Plats of all Lands described on this Page, see Page _____ of Plats.			DESCRIPTION OF PROPERTY.						No. of Acres of Land Classified.			Whole No. of Acres.	Value per Acre including Buildings.	Total Value of Lands, excluding Buildings.	Value of all Buildings.			Total Value of Lands and Buildings.	Amount Added or Deducted by Co. Board of Equalization.		Total Value as Equalized by Co. Board.	Amount Added or Deducted by State Board of Equalization.		Total Value as Equalized by State Board.	REMARKS.		
IN WHOSE NAME ASSESSED.	No. of Entry.	Orig'l Quantity.	ORIGINAL PROPRIETOR.	WATER COURSE.	Acres	H.	Acres	H.	Acres	H.	Acres				H.	Dollars.	Dollars.		Dollars.	Dollars.		Dollars.	Added Dollars.			Deducted Dollars.	Dollars.
<i>Cameron S</i>	6107	1300	<i>L. Joyce</i>	<i>Fultoncrick</i>					37 1/2				37 1/2	16	600				600				600		72	528	
<i>Cahill John, E</i>	220	1250	<i>R.A. Claiborne</i>	<i>Fultoncrick</i>	86		80 1/2						166 1/2	30	4995	300		200	5495				5495		659	4836	
	7969	800	<i>John Gilson</i>	<i>Fultoncrick</i>	37		76		100				213	30	6390				6390				6390		767	5623	
<i>Cahill David</i>	7869	800	<i>John Gilson</i>	<i>Fultoncrick</i>	44		17		83				144	28	4032	200			4232				4232		508	3724	
<i>Cochran Alexander</i>	6293	4267	<i>B. Claiborne</i>	<i>Fultoncrick</i>	23		3		12 3/4				40 3/4	30	1222				1222				1222		147	1075	
<i>Collaway Lemuel</i>	6293	4267	<i>B. Claiborne</i>	<i>Fultoncrick</i>	6		6		3				15	28	420				420				420		50	370	
<i>Cottrell Gabriel</i>	6293	4267	<i>B. Claiborne</i>	<i>Fultoncrick</i>	20		20		11				57	28	1428				1428				1428		171	1257	
<i>Cougill George</i>	6293	4267	<i>B. Claiborne</i>	<i>Fultoncrick</i>	46		36		152				236	28	6608	500		200	7308				7308		870	6431	
<i>Cochran Henry</i>	6293	4267	<i>B. Claiborne</i>	<i>Fultoncrick</i>			1/2						1/2	33	50	100			150				150		18	132	
<i>Cougill Nancy Mary</i>	6293	4267	<i>B. Claiborne</i>	<i>Fultoncrick</i>	5		6 1/2						11 1/2	32	368	100			468				468		52	412	
<i>Cougill J</i>	6293	4267	<i>B. Claiborne</i>	<i>Fultoncrick</i>			1						1	30	30				30				30		4	26	
<i>Cox Pir</i>	6293	4267	<i>B. Claiborne</i>	<i>Fultoncrick</i>			5						5	50	200				200				200		24	176	
<i>Cookright W A</i>	6293	4267	<i>B. Claiborne</i>	<i>Fultoncrick</i>			5						5	55	275				275				275		33	242	
					56 3/4								56 3/4	32	1816	100	100		2016				2016		242	1774	
	6307	380	<i>W Pelham</i>				30		28				68	32	2176				2176				2176		261	1915	
<i>Cole I, B</i>	6307	380	<i>W Pelham</i>	<i>Fultoncrick</i>	5 1/2								5 1/2	45	248	400	200	248	848				848		102	746	
	6293	4267	<i>B. Claiborne</i>		30		35		39 1/2				104 1/2	30	3135				3135				3135		376	2759	
<i>Cook John A</i>	7078	2400	<i>W B Carothers</i>				6						6	60	360	400	200	960					960		175	845	72 of the 600
	6293	4267	<i>B. Claiborne</i>	<i>Fultoncrick</i>			10						10	45	450				450				450		54	396	5000
	5809	2000	<i>J Nichols</i>	<i>Fultoncrick</i>	20		25		57				102	28	1720	100			1820				1820		218	1602	
<i>Cook Catherine</i>	5809	2000	<i>J Nichols</i>	<i>Fultoncrick</i>	9		6		5				30	23	440				440				440		53	387	
<i>Clune Mary</i>	6107	1300	<i>E Jeps</i>	<i>Fultoncrick</i>	40		6		40				88	20	1760				1760				1760		219	1549	
<i>Charles Freeman</i>	5809	2000	<i>J Nichols</i>	<i>Fultoncrick</i>	8								8	30	240				240				240		29	211	
					439 1/4		469 1/2		582 3/4				1390 1/2		38603	1800	700	41103				41103		498	36171		

Assessment of Real Property in *Claitorne* Township,

Union County, Ohio, for the Year 1870.

DESCRIPTION OF PROPERTY.				No. of Acres of Land Classified.						Whole No. of Acres.	Value per Acre including Buildings.	Total Value of Lands, excluding Buildings.	Value of all Buildings.			Total Value of Lands and Buildings.	Amount Added or Deducted by Co. Board of Equalization.		Total Value as Equalized by State Board.	REMARKS.	
				Arable & Plow Land.	Meadow & Pasture Land.	Uncultiv'd & Wood Land.	Houses.	Mills.	Other Buildings.				Added Dollars.	Deducted Dollars.							
IS WHOSE NAME ASSESSED.	No. of Entry.	Orig'l Quantity.	ORIGINAL PROPRIETOR.	Water Course.	Acres.	II.	Acres.	II.	Acres.	II.	Acres.	II.	Dollars.	Dollars.	Dollars.	Dollars.	Dollars.	Dollars.	Dollars.	Dollars.	
<i>Crassil John</i>	7009	200	<i>W. J. Brothers</i>	<i>Fultoncreek</i>					40		40		20	800			800		96	704	
	6307	1200	<i>W. Pelham</i>				23				33		40	920			920		110	810	
	7008	2400	<i>Brothers</i>		40		30		37 1/2		107 1/2		30	3225	100		3325		399	2926	
<i>Cratty J. P. & Rich. W.</i>	6293	4267	<i>B. Claitorne</i>	<i>Fultoncreek</i>			2				3		75	150			150		15	132	
	7028	2400	<i>W. J. Brothers</i>				6				6		60	360			360			360	
<i>Crassady William</i>	6107	633	<i>Levi Joyce</i>	<i>Fultoncreek</i>	40		10		100		150		21	3150			3150		378	2772	
<i>Crabtree Mathew</i>	6107	633	<i>Levi Joyce</i>	<i>Fultoncreek</i>					35		35		19	665			665		80	585	
<i>Crane Newton</i>	7009	800	<i>Amos</i>	<i>Fultoncreek</i>					50		50		18	900			900		108	792	
<i>Church M. P. Passage</i>	6161	823	<i>J. Brown</i>	<i>Fultoncreek</i>			1				1		65	65	100		165		20	145	
<i>Church M. P. Passage</i>	7009	2400	<i>W. J. Brothers</i>	<i>Fultoncreek</i>			1				1		50	50	200		250		30	220	
<i>Collier Naomi</i>	6307	1200	<i>W. Pelham</i>	<i>Fultoncreek</i>	3		2				4		70	280	200		480		58	422	
<i>Clarke George</i>	6307	1200	<i>W. Pelham</i>	<i>Fultoncreek</i>			2 1/4				2 1/4		26	60			60		7	53	
<i>Clarke Sarah</i>	6307	1200	<i>W. Pelham</i>	<i>Fultoncreek</i>			3		4		7		26	182			182		22	160	
<i>Delaver John</i>	6293	4267	<i>B. Claitorne</i>	<i>Fultoncreek</i>	50		6		54		110		32	8520	100	100	3720		3720	146	3274
<i>Delaver Saml</i>	6161	823	<i>J. Brown</i>	<i>Fultoncreek</i>	12				28		40		25	1000			1000		120	880	
<i>Davis David</i>	6161	823	<i>J. Brown</i>	<i>Fultoncreek</i>	30				76 1/2		106 1/2		21	2336			2336		268	1968	
<i>Dust John</i>					30				14 1/2		44 1/2		25	1112			1112		13	978	
<i>Deffenbaugh Jeph</i>	6228	500	<i>Evans & Ewing</i>	<i>Fultoncreek</i>	60		20		30		100		20	2000			2000		240	1760	
<i>Deffenbaugh Jacob W.</i>	6228	500	<i>Evans & Ewing</i>	<i>Fultoncreek</i>					76		76		16	1216			1216		146	1070	
<i>Dell John</i>	7008	2400	<i>W. J. Brothers</i>	<i>Fultoncreek</i>	23				73		96		21	2016			2016		242	1774	
<i>Decker Clarke</i>	6293	4267	<i>B. Claitorne</i>	<i>Fultoncreek</i>					67 3/4		67 3/4		18	1220			1220		146	1074	
<i>Dean Isaac</i>							3				3		45	135			135		16	119	
<i>Evans William B.</i>	7008	2400	<i>W. J. Brothers</i>	<i>Fultoncreek</i>	28		12		71 1/2		111 1/2		22	2442	100		2542		305	2237	
<i>Ellenwood Jeremiah</i>	5829	2000	<i>John Nichol</i>	<i>Fultoncreek</i>	30		40		32		102		22	2240			2240		269	1971	
					345		155 1/4		779 3/4		1280		398	4800	100		30484		3658	26826	

Assessment of Real Property in *Clatsburg* Township,

Union County, Ohio, for the Year 1870.

For Plats of all Lands described on this Page, see Page _____ of Plats.		DESCRIPTION OF PROPERTY.			No. of Acres of Land Classified.			Whole No. of Acres.	Value per Acre, excluding Buildings.	Total Value of Lands, excluding Buildings.	Value of all Buildings.			Total Value of Lands and Buildings.	Amount Added or Deducted by Co. Board of Equalization.		Total Value as Equalized by Co. Board.	Amount Added or Deducted by State Board of Equalization.		Total Value as Equalized by State Board.	REMARKS.	
					Arable & Plow Land.	Meadow & Pasture Land.	Uncultivated & Wood Land.				Houses.	Mills.	Other Buildings.		Added Dollars.	Deducted Dollars.		Added Dollars.	Deducted Dollars.			
In Whose Name Assessed.	No. of Entry.	Orig'l Quantity.	ORIGINAL PROPRIETOR.	WATER COURSE.	Acres.	H.	Acres.	H.	Acres.	H.	Acres.	H.	Dollars.	Dollars.	Dollars.	Dollars.	Dollars.	Dollars.	Dollars.	Dollars.	Dollars.	Dollars.
<i>Fisher John</i>	6307	1200	<i>W Pelham</i>	<i>Fultoncrub</i>	35		10		69 1/2		114 1/2		20	2290			2290			2290	275	2015
<i>Fisher William</i>	6307	1200	<i>W Pelham</i>	<i>Fultoncrub</i>	30		12		36 3/4		78 3/4		20	1575	100		1675			1675	201	1474
<i>Fish Cornelius E</i>	6307	1200	<i>W Pelham</i>	<i>Fultoncrub</i>	50		60		45		115		25	3875	500		4375			4375	525	3950
<i>Fisher Benjamin</i>	7008	2400	<i>W J. Bonthuis</i>	<i>Fultoncrub</i>	146		52		138 1/2		338 1/2		30	10155	250		10505			10505	1261	9244
<i>Fisher Benjamin</i>	6307	1200	<i>W Pelham</i>	<i>Fultoncrub</i>			6				6		45	270			270			270	31	239
<i>Fisher Benjamin</i>	6293	4267	<i>B. Clatsburg</i>	<i>Fultoncrub</i>	30		30				58		45	2250	200		2450			2450	294	2156
<i>Ferguson W. H.</i>	6293	4267	<i>B. Clatsburg</i>	<i>Fultoncrub</i>			50		20 3/4		70 3/4		45	3094			3094			3094	371	2723
<i>Fisher William C</i>	7008	2400	<i>W J. Bonthuis</i>	<i>Fultoncrub</i>	22		19		61 1/4		101 1/4		35	2520	100		2630			2630	316	2314
<i>Graham Samuel</i>	6307	1200	<i>W Pelham</i>	<i>Fultoncrub</i>	65		75		60		200		30	6000	100		6200			6200	744	5486
<i>Graham John</i>	6307	1200	<i>W Pelham</i>	<i>Fultoncrub</i>	2		2 3/4				4 3/4		90	427			427			427	51	376
<i>Graham Thomas B</i>	6307	1200	<i>W Pelham</i>	<i>Fultoncrub</i>	25		25		10		60		23	1380			1380			1380	166	1214
<i>Grace Peter B</i>	6307	1200	<i>W Pelham</i>	<i>Fultoncrub</i>	9		3				12		33	396			396			396	48	348
<i>Grachest Isaac</i>	6307	1200	<i>W Pelham</i>	<i>Fultoncrub</i>					40		40		16	640			640			640	77	563
<i>Grachest Isaac</i>	7008	2600	<i>W J. Bonthuis</i>	<i>Fultoncrub</i>			5 1/2				5 1/2		50	275	300		575			575	69	506
<i>Grimble Sylvester</i>	7009	800	<i>A Moore</i>	<i>Fultoncrub</i>	40		60		25		135		22	2750			2750			2750	330	2420
<i>Grimble Sylvester</i>	220	416	<i>B. Clatsburg</i>	<i>Fultoncrub</i>					40		40		22	880			880			880	106	774
<i>Grimble C. & W. J.</i>	220	416	<i>B. Clatsburg</i>	<i>Fultoncrub</i>					40		40		22	880			880			880	106	774
<i>Gill J. S.</i>	6307	1200	<i>W Pelham</i>	<i>Fultoncrub</i>	45		10		13 3/4		67 3/4		50	3387	200	100	3687			3687	442	3245
<i>Gast Samuel</i>	6161	823	<i>J. M. Brown</i>	<i>Fultoncrub</i>	25		20		32		77		28	2156			2156			2156	258	1998
<i>Graham William</i>	6307	1200	<i>W Pelham</i>	<i>Fultoncrub</i>			2				2		65	130	100		230			230	26	202
<i>Graham John P</i>	6307	1200	<i>W Pelham</i>	<i>Fultoncrub</i>	15		3		25		43		25	1075			1075			1075	129	946
<i>Gandy William</i>	6307	1200	<i>W Pelham</i>	<i>Fultoncrub</i>	8		8		3		19		35	665	225		890			890	107	783
<i>Gandy William</i>	6307	1200	<i>W Pelham</i>	<i>Fultoncrub</i>	20		10		20		50		30	1500	100	100	1700			1700	204	1596
<i>Gandy Alexander</i>	6293	4267	<i>B. Clatsburg</i>	<i>Fultoncrub</i>	5						5		50	350			350			350	30	120
					574		45 1/4		858 3/4		1885		5	700	2775	5	4975			52975	6598	49377

Assessment of Real Property in *Claiborne* Township,

Union County, Ohio, for the Year 1870.

For Plats of all Lands described on this Page, see Page _____ of Plats.	DESCRIPTION OF PROPERTY.				No. of Acres of Land Classified.						Whole No. of Acres.	Value per Acre including Buildings.	Total Value of Lands, excluding Buildings.	Value of all Buildings.			Total Value of Lands and Buildings.	Amount Added or Deducted by Co. Board of Equalization.		Total Value as Equalized by Co. Board.	Amount Added or Deducted by State Board of Equalization.		Total Value as Equalized by State Board.	REMARKS.
					Arable & Plow Land.		Meadow & Pasture Land.		Uncultivated & Wood Land.					Houses.	Mills.	Other Buildings.		Added Dollars.	Deducted Dollars.		Added Dollars.	Deducted Dollars.		
					Acres.	H.	Acres.	H.	Acres.	H.				Dollars.	Dollars.	Dollars.								
<i>Marriott Henry J</i>	<i>6307</i>	<i>1200</i>	<i>W Pelham</i>	<i>Fultoncrick</i>	<i>38</i>		<i>78</i>		<i>64 1/4</i>		<i>150 1/4</i>	<i>32</i>	<i>5768</i>	<i>250</i>		<i>200</i>	<i>6218</i>		<i>6218</i>	<i>546</i>	<i>5472</i>			
<i>Murphy Samuel</i>	<i>6307</i>	<i>1200</i>	<i>W Pelham</i>	<i>Fultoncrick</i>	<i>4</i>						<i>4</i>	<i>75</i>	<i>300</i>	<i>100</i>			<i>400</i>		<i>400</i>	<i>48</i>	<i>352</i>			
<i>McGeorge E</i>	<i>6307</i>	<i>1200</i>	<i>W Pelham</i>	<i>Fultoncrick</i>	<i>1/4</i>						<i>1/4</i>	<i>80</i>	<i>20</i>				<i>30</i>		<i>20</i>	<i>2</i>	<i>18 1/2</i>	<i>to H.C. Hamilton 1871</i>		
<i>Munson Theadore</i>	<i>6293</i>	<i>4267</i>	<i>B. & C. Claiborne</i>	<i>Fultoncrick</i>	<i>40</i>				<i>10</i>		<i>50</i>	<i>28</i>	<i>1400</i>	<i>200</i>			<i>1600</i>		<i>1600</i>	<i>192</i>	<i>1468</i>			
<i>Moses Samuel</i>	<i>6293</i>	<i>4267</i>	<i>B. & C. Claiborne</i>	<i>Fultoncrick</i>	<i>9</i>		<i>15</i>		<i>13 1/2</i>		<i>37 1/2</i>	<i>30</i>	<i>1125</i>	<i>100</i>			<i>1235</i>		<i>1225</i>	<i>147</i>	<i>1078</i>			
<i>Moore Henry</i>	<i>6293</i>	<i>4267</i>	<i>B. & C. Claiborne</i>	<i>Fultoncrick</i>	<i>34</i>				<i>70 1/2</i>		<i>104 1/2</i>	<i>20</i>	<i>2090</i>				<i>2090</i>		<i>2090</i>	<i>251</i>	<i>1839</i>			
<i>Marriott William H</i>	<i>6293</i>	<i>4267</i>	<i>B. & C. Claiborne</i>	<i>Fultoncrick</i>					<i>12</i>		<i>43</i>	<i>27</i>	<i>1161</i>				<i>1161</i>		<i>1161</i>	<i>139</i>	<i>1022</i>			
<i>Miller John (w) Dancer</i>	<i>6293</i>	<i>4267</i>	<i>B. & C. Claiborne</i>	<i>Fultoncrick</i>	<i>10</i>						<i>10</i>	<i>28</i>	<i>280</i>	<i>100</i>			<i>380</i>		<i>380</i>	<i>46</i>	<i>334</i>			
<i>Mays Samuel</i>	<i>6293</i>	<i>4267</i>	<i>B. & C. Claiborne</i>	<i>Fultoncrick</i>	<i>52</i>		<i>35</i>		<i>28</i>		<i>125</i>	<i>27</i>	<i>3375</i>	<i>200</i>	<i>100</i>		<i>3675</i>		<i>3675</i>	<i>441</i>	<i>3234</i>			
<i>Miller James G</i>	<i>7869</i>	<i>800</i>	<i>J. Glenn</i>	<i>Fultoncrick</i>					<i>10</i>		<i>10</i>	<i>16</i>	<i>208</i>				<i>208</i>		<i>208</i>	<i>25</i>	<i>183</i>			
<i>McKiel Andrew</i>	<i>7869</i>	<i>800</i>	<i>J. Glenn</i>	<i>Fultoncrick</i>	<i>20</i>		<i>10</i>		<i>44 1/2</i>		<i>74 1/2</i>	<i>25</i>	<i>1862</i>	<i>100</i>	<i>100</i>		<i>2062</i>		<i>2062</i>	<i>247</i>	<i>1815</i>			
<i>McKiel Samuel</i>	<i>7869</i>	<i>800</i>	<i>J. Glenn</i>	<i>Fultoncrick</i>	<i>24</i>				<i>7 1/2</i>		<i>31 1/2</i>	<i>25</i>	<i>778</i>				<i>778</i>		<i>778</i>	<i>93</i>	<i>685</i>			
<i>McPherson Thomas</i>	<i>12542</i>	<i>789</i>	<i>Joseph Miller</i>	<i>Fultoncrick</i>					<i>13 1/2</i>		<i>13 1/2</i>	<i>25</i>	<i>337</i>				<i>337</i>		<i>337</i>	<i>40</i>	<i>297</i>			
<i>McPherson Thomas</i>	<i>5809</i>	<i>2000</i>	<i>John Nichols</i>	<i>Fultoncrick</i>	<i>28</i>		<i>54</i>		<i>2 1/2</i>		<i>54 1/2</i>	<i>25</i>	<i>1362</i>	<i>100</i>	<i>100</i>		<i>1462</i>		<i>1462</i>	<i>195</i>	<i>1287</i>			
<i>McAllister Nelson</i>	<i>5809</i>	<i>2000</i>	<i>John Nichols</i>	<i>Fultoncrick</i>	<i>10</i>						<i>10</i>	<i>23</i>	<i>230</i>	<i>100</i>			<i>330</i>		<i>330</i>	<i>40</i>	<i>290</i>			
<i>Martin John M</i>	<i>5809</i>	<i>2000</i>	<i>John Nichols</i>	<i>Fultoncrick</i>	<i>15</i>		<i>30</i>		<i>71 3/4</i>		<i>116 3/4</i>	<i>21</i>	<i>2350</i>				<i>2350</i>		<i>2350</i>	<i>282</i>	<i>2068</i>			
<i>McFarland John H</i>	<i>5809</i>	<i>2000</i>	<i>John Nichols</i>	<i>Fultoncrick</i>					<i>40</i>		<i>48</i>	<i>20</i>	<i>800</i>				<i>800</i>		<i>800</i>	<i>96</i>	<i>704</i>			
<i>Moore W H</i>	<i>6293</i>	<i>4267</i>	<i>B. & C. Claiborne</i>	<i>Fultoncrick</i>	<i>5</i>				<i>10</i>		<i>15</i>	<i>30</i>	<i>450</i>				<i>450</i>		<i>450</i>	<i>54</i>	<i>396</i>			
<i>McKiel Samuel</i>	<i>12542</i>	<i>789</i>	<i>Joseph Miller</i>	<i>Fultoncrick</i>							<i>928 1/4</i>		<i>23996</i>	<i>1150</i>	<i>500</i>		<i>25546</i>		<i>25526</i>	<i>308</i>	<i>42248 2</i>	<i>York 2/4</i>		

Assessment of Real Property in *Claiborne* Township,

Union County, Ohio, for the Year 1870.

For Plats of all Lands described on this Page, see Page _____ of Plats.	DESCRIPTION OF PROPERTY.				No. of Acres of Land Classified.			REMARKS.	
	IN WHOSE NAME ASSESSED.	No. of Entry.	Orig'l Quantity.	ORIGINAL PROPRIETOR.	WATER COURSE.	Arable & Plow Land.			Uncultivated & Wood Land.
						Acres.	H.		
<i>Mulvain Daniel</i>	<i>7009</i>	<i>800</i>		<i>A Moore</i>	<i>Hulltownship</i>	<i>10</i>		<i>40</i>	
<i>Murphy Rebecca</i>	<i>6107</i>	<i>633</i>		<i>L Joyce</i>	<i>Hulltownship</i>	<i>30</i>	<i>30</i>	<i>40</i>	
<i>McMillan Mathew</i>	<i>320</i>	<i>416</i>		<i>R. Claiborne</i>	<i>Hulltownship</i>	<i>75</i>	<i>10</i>	<i>135</i>	
<i>McMillan R. T.</i>	<i>220</i>	<i>416</i>		<i>R. Claiborne</i>	<i>Hulltownship</i>	<i>50</i>	<i>50</i>	<i>46</i>	
<i>McElroy Samuel</i>	<i>220</i>	<i>416</i>		<i>R. Claiborne</i>	<i>Hulltownship</i>			<i>59</i>	
<i>Moore Thomas</i>	<i>220</i>	<i>416</i>		<i>R. Claiborne</i>	<i>Hulltownship</i>	<i>14</i>		<i>61</i>	
<i>Moore William G.</i>	<i>220</i>	<i>416</i>		<i>R. Claiborne</i>	<i>Hulltownship</i>	<i>15</i>		<i>110 3/4</i>	
<i>McElroy William</i>	<i>7809</i>	<i>800</i>		<i>John Gibson</i>	<i>Hulltownship</i>	<i>17</i>			
<i>Miller N. H. L.</i>	<i>6307</i>	<i>380</i>		<i>W. Pelham</i>	<i>Hulltownship</i>			<i>3</i>	
<i>McLain Ariel</i>	<i>6307</i>	<i>380</i>		<i>W. Pelham</i>	<i>Hulltownship</i>	<i>1 1/2</i>			
<i>Ariel O. G.</i>	<i>7008</i>	<i>2400</i>		<i>Wm J. G. Bonther</i>	<i>Hulltownship</i>	<i>30</i>		<i>20</i>	
<i>Amis Edward</i>	<i>6293</i>	<i>4267</i>		<i>B. Claiborne</i>	<i>Hulltownship</i>		<i>9</i>		
<i>DeBourne Thomas A.</i>	<i>13440</i> <i>13441</i> <i>13442</i>	<i>1037</i>		<i>C. Wallace</i>	<i>Hulltownship</i>	<i>35</i>		<i>15 1/2</i>	
						<i>27 1/2</i>	<i>102</i>	<i>52 1/2</i>	

Whole No. of Acres.	Value per Acre of Land.	Total Value of Lands, excluding Buildings.	Value of all Buildings.			Total Value of Lands and Buildings.	Amount Added or Deducted by Co. Board of Equalization.		Total Value as Equalized by Co. Board.	Amount Added or Deducted by State Board of Equalization.		Total Value as Equalized by State Board.
			Houses.	Mills.	Other Buildings.		Added Dollars.	Deducted Dollars.		Added Dollars.	Deducted Dollars.	
<i>50</i>	<i>18</i>	<i>900</i>				<i>900</i>		<i>900</i>		<i>105</i>	<i>792</i>	
<i>100</i>	<i>21</i>	<i>2100</i>	<i>100</i>			<i>2200</i>		<i>2200</i>		<i>264</i>	<i>1936</i>	
<i>220</i>	<i>22</i>	<i>4972</i>				<i>4972</i>		<i>4972</i>		<i>597</i>	<i>4375</i>	
<i>146</i>	<i>21</i>	<i>3066</i>				<i>3066</i>		<i>3066</i>		<i>368</i>	<i>2698</i>	
<i>59</i>	<i>15</i>	<i>885</i>				<i>885</i>		<i>885</i>		<i>106</i>	<i>779</i>	
<i>75</i>	<i>16</i>	<i>1200</i>	<i>100</i>			<i>1300</i>		<i>1300</i>		<i>156</i>	<i>1144</i>	
<i>125 3/4</i>	<i>16</i>	<i>1866</i>	<i>100</i>			<i>1966</i>		<i>1966</i>		<i>236</i>	<i>1730</i>	
<i>17</i>	<i>17</i>	<i>289</i>	<i>100</i>			<i>389</i>		<i>389</i>		<i>47</i>	<i>342</i>	
<i>3</i>	<i>60</i>	<i>180</i>	<i>120</i>			<i>400</i>		<i>400</i>		<i>48</i>	<i>352</i>	
<i>1 1/2</i>	<i>40</i>	<i>60</i>				<i>60</i>		<i>60</i>		<i>7</i>	<i>53</i>	
<i>50</i>	<i>22</i>	<i>1100</i>	<i>100</i>			<i>1200</i>		<i>1200</i>		<i>144</i>	<i>1056</i>	
<i>9</i>	<i>55</i>	<i>495</i>				<i>495</i>		<i>495</i>		<i>60</i>	<i>935</i>	
<i>50 1/2</i>	<i>21</i>	<i>1060</i>				<i>1060</i>		<i>1060</i>		<i>127</i>	<i>933</i>	
<i>906 3/4</i>		<i>18273</i>	<i>620</i>			<i>18893</i>		<i>18893</i>		<i>2268</i>	<i>16625</i>	

Assessment of Real Property in *Clairmont* Township,

Union County, Ohio, for the Year 1870.

For Plats of all Lands described on this Page, see Page _____ of Plats.	No. of Entry.	Orig'l Quantity.	DESCRIPTION OF PROPERTY.	WATER COURSE.	No. of Acres of Land Classified.						Whole No. of Acres.	Value per Acre, as per Balance.	Total Value of Lands, excluding Buildings.	Value of all Buildings.			Total Value of Lands and Buildings.	Amount Added or Deducted by Co. Board of Equalization.		Total Value as Equalized by Co. Board.	Amount Added or Deducted by State Board of Equalization.		Total Value Equalized by State Board.	REMARKS.
					Arable & Plow Land.		Meadow & Pasture Land.		Uncultiv'd & Wood Land.					Houses.	Mills.	Other Buildings.		Added Dollars.	Deducted Dollars.		Added Dollars.	Deducted Dollars.		
					Acres.	H.	Acres.	H.	Acres.	H.				Dollars.	Dollars.	Dollars.		Dollars.	Dollars.		Dollars.	Dollars.		
<i>Sivy Levi</i>	<i>6293</i>	<i>500</i>	<i>B. Clairmont</i>	<i>Fultoncrick</i>	<i>23</i>		<i>13</i>		<i>40 1/2</i>		<i>76 1/2</i>	<i>28</i>	<i>2142</i>	<i>100</i>		<i>100</i>	<i>2342</i>			<i>2342</i>	<i>281</i>	<i>2061</i>		
<i>Smart Joseph</i>	<i>6293</i>	<i>500</i>	<i>B. Clairmont</i>	<i>Fultoncrick</i>	<i>43</i>		<i>30</i>		<i>37</i>		<i>110</i>	<i>25</i>	<i>2750</i>				<i>2750</i>			<i>2750</i>	<i>330</i>	<i>2420</i>		
<i>Simpson John</i>	<i>6293</i>	<i>500</i>	<i>B. Clairmont</i>	<i>Fultoncrick</i>	<i>20</i>		<i>26</i>		<i>33 3/4</i>		<i>69 3/4</i>	<i>21</i>	<i>1464</i>	<i>200</i>			<i>1664</i>			<i>1664</i>	<i>200</i>	<i>1464</i>		
<i>Smith W W</i>	<i>6293</i>	<i>500</i>	<i>B. Clairmont</i>	<i>Fultoncrick</i>	<i>50</i>		<i>10</i>		<i>2</i>		<i>62</i>	<i>26</i>	<i>1612</i>				<i>1612</i>			<i>1612</i>	<i>193</i>	<i>1419</i>		
<i>Stoep Eli</i>	<i>6293</i>	<i>500</i>	<i>B. Clairmont</i>	<i>Fultoncrick</i>	<i>22</i>		<i>27</i>		<i>14</i>		<i>63</i>	<i>26</i>	<i>1638</i>	<i>200</i>			<i>1838</i>			<i>1838</i>	<i>221</i>	<i>1617</i>		
<i>Sparks James C</i>	<i>6293</i>	<i>500</i>	<i>B. Clairmont</i>	<i>Fultoncrick</i>	<i>4 1/4</i>						<i>4 1/4</i>	<i>28</i>	<i>135</i>	<i>100</i>			<i>235</i>			<i>235</i>	<i>28</i>	<i>207</i>		
<i>Stiles O V</i>	<i>6293</i>	<i>500</i>	<i>B. Clairmont</i>	<i>Fultoncrick</i>	<i>4</i>						<i>4</i>	<i>45</i>	<i>180</i>				<i>180</i>			<i>180</i>	<i>22</i>	<i>158</i>		
<i>Snider Jacob J</i>	<i>6293</i>	<i>500</i>	<i>B. Clairmont</i>	<i>Fultoncrick</i>	<i>30</i>		<i>12</i>		<i>9</i>		<i>51</i>	<i>20</i>	<i>1020</i>				<i>1020</i>			<i>1020</i>	<i>122</i>	<i>898</i>	<i>Should be in 5829-</i>	
<i>Sivy John C</i>	<i>6293</i>	<i>500</i>	<i>B. Clairmont</i>	<i>Fultoncrick</i>	<i>20</i>				<i>40</i>		<i>60</i>	<i>25</i>	<i>1500</i>				<i>1500</i>			<i>1500</i>	<i>180</i>	<i>1320</i>		
<i>Snediker John H</i>	<i>5809</i>	<i>200</i>	<i>John Nichols</i>	<i>Fultoncrick</i>	<i>25</i>				<i>6 1/2</i>		<i>91</i>	<i>22</i>	<i>2002</i>	<i>100</i>			<i>2102</i>			<i>2102</i>	<i>252</i>	<i>1850</i>		
<i>✓ ✓ ✓</i>	<i>5809</i>	<i>200</i>	<i>John Nichols</i>	<i>✓ ✓</i>					<i>9</i>		<i>9</i>	<i>20</i>	<i>180</i>				<i>180</i>			<i>180</i>	<i>22</i>	<i>158</i>		
<i>Smith Robert J</i>	<i>6307</i>	<i>1200</i>	<i>W Pelham</i>	<i>Fultoncrick</i>	<i>29</i>		<i>10</i>		<i>40</i>		<i>79</i>	<i>30</i>	<i>2370</i>	<i>200</i>			<i>2570</i>			<i>2570</i>	<i>308</i>	<i>2262</i>		
<i>Stephens O P</i>	<i>6307</i>	<i>1200</i>	<i>W Pelham</i>	<i>Fultoncrick</i>					<i>2 3/4</i>		<i>2 3/4</i>	<i>60</i>	<i>165</i>				<i>165</i>			<i>165</i>	<i>20</i>	<i>145</i>		
<i>Snare Isaac</i>	<i>6307</i>	<i>1200</i>	<i>W Pelham</i>	<i>Fultoncrick</i>	<i>30</i>		<i>10</i>		<i>11 3/4</i>		<i>51 3/4</i>	<i>23</i>	<i>1173</i>	<i>100</i>			<i>1273</i>			<i>1273</i>	<i>153</i>	<i>1120</i>		
<i>Swartz Daniel</i>	<i>6307</i>	<i>1200</i>	<i>W Pelham</i>	<i>Fultoncrick</i>	<i>20</i>		<i>20</i>		<i>10</i>		<i>50</i>	<i>36</i>	<i>1800</i>	<i>250</i>			<i>2050</i>			<i>2050</i>	<i>242</i>	<i>1804</i>		
<i>✓ ✓</i>	<i>6293</i>	<i>4267</i>	<i>✓ ✓</i>	<i>✓ ✓</i>					<i>3</i>		<i>3</i>	<i>36</i>	<i>108</i>				<i>108</i>			<i>108</i>	<i>13</i>	<i>95</i>		
<i>Sidle Jacob C</i>	<i>6293</i>	<i>4267</i>	<i>W Pelham</i>	<i>Fultoncrick</i>	<i>40</i>		<i>100</i>		<i>142 1/2</i>		<i>282 1/2</i>	<i>30</i>	<i>8975</i>	<i>300</i>			<i>9275</i>			<i>9275</i>	<i>1103</i>	<i>8162</i>		
<i>✓ ✓</i>	<i>7008</i>	<i>2400</i>	<i>W J Brothers</i>	<i>✓ ✓</i>	<i>75</i>		<i>100</i>		<i>135</i>		<i>310</i>	<i>28</i>	<i>8680</i>	<i>250</i>			<i>8930</i>			<i>8930</i>	<i>1072</i>	<i>7359</i>		
<i>Sheppard Sarah</i>	<i>7008</i>	<i>2400</i>	<i>W J Brothers</i>	<i>Fultoncrick</i>	<i>4</i>		<i>34</i>				<i>38</i>	<i>23</i>	<i>874</i>				<i>874</i>			<i>874</i>	<i>104</i>	<i>770</i>		
<i>Shieler John</i>	<i>7008</i>	<i>2400</i>	<i>W J Brothers</i>	<i>Fultoncrick</i>	<i>45</i>		<i>45</i>		<i>72</i>		<i>162</i>	<i>25</i>	<i>4050</i>				<i>4050</i>			<i>4050</i>	<i>486</i>	<i>3564</i>		
<i>✓ ✓</i>	<i>5809</i>	<i>200</i>	<i>John Nichols</i>	<i>✓ ✓</i>					<i>52</i>		<i>52</i>	<i>20</i>	<i>1040</i>				<i>1040</i>			<i>1040</i>	<i>124</i>	<i>916</i>		
					<i>494 1/4</i>		<i>439 3/4</i>		<i>707 1/2</i>		<i>1631 1/2</i>	<i>1758</i>	<i>1800</i>	<i>100</i>			<i>45758</i>			<i>45758</i>	<i>5490</i>	<i>40268</i>		

Assessment of Real Property in *Claitorne* Township,

Union County, Ohio, for the Year 1870.

For Plats of all Lands described on this Page, see Page _____ of Plats.			DESCRIPTION OF PROPERTY.				No. of Acres of Land Classified.			Whole No. of Acres.	Value per Acre excluding Buildings.	Total Value of Lands, excluding Buildings.	Value of all Buildings.			Total Value of Lands and Buildings.	Amount Added or Deducted by Co. Board of Equalization.		Total Value as Equalized by Co. Board.	Amount Added or Deducted by State Board of Equalization.		Total Value as Equalized by State Board.	REMARKS.
IN WHOSE NAME ASSESSED.	No. of Entry.	Orig'l Quantity.	ORIGINAL PROPRIETOR.	WATER COURSE.	Acres	H.	Acres	H.	Acres				H.	Houses.	Mills.		Other Buildings.	Added Dollars.		Deducted Dollars.	Dollars.		
Fugate John A J	6293	4267	B. Claitorne	Fultoncrub	11		13		19		43	21	903			903			903	108	795		
Tyler Richard	6293	4267	B. Claitorne	Fultoncrub	16		16		19 1/2		51 1/2	31	1596			1596			1596	192	1405		
Fugate Larkin	6293	4267	B. Claitorne	Fultoncrub	15		4		3		22	20	440			440			440	53	387	Should be in Aug 1861	
Taylor Abraham	7009	800	A. Moore	Fultoncrub	30		30		16		76	20	1520	100		1620			1620	195	1425		
Fugate H.C	6293	4267	B. Claitorne	Fultoncrub	16 1/2						16 1/2	20	495	200		695			695	88	612		
Stau John W	6161	823	John Course	Fultoncrub	35		12		34		69	21	1449			1449			1449	174	1275		
Lammer Geo W	6293	4267	B. Claitorne	Fultoncrub	47		12		74		133	30	3990	200		4190			4190	503	3687		
Westall William	6161	823	John Course	Fultoncrub	30				44 1/4		74 1/4	23	1708			1708			1708	205	1503		
Walker Solomon	6293	4267	B. Claitorne	Fultoncrub	77				38		115	36	4140	300		4440			4440	533	3907		
Webster E. J	6293	4267	B. Claitorne	Fultoncrub	26		10		70		106	30	3180	200		3380			3380	406	2974		
Wort A.C	6293	4267	B. Claitorne	Fultoncrub	50		18		12		80	30	2400	100		2500			2500	300	2200		
Woodruff John C	6293	4267	B. Claitorne	Fultoncrub	30		5		8		43	30	1290	100		1390			1390	167	1223		
✓ - -	7008	2400	W. J. & Bonister	- -	20		29				49	23	1127			1127			1127	135	992		
Weiss Reuben	7008	2400	W. J. & Bonister	Fultoncrub	50		50		44 1/4		144 1/4	31	4472	200		4672			4672	561	4111		
✓ -	6293	4267	B. Claitorne	- -	6 1/4						6 1/4	31	194			194			194	23	171		
Wallace Samuel	7869	800	John Gilson	Fultoncrub	25		55		19		99	25	2475	300		2775			2775	333	2442		
Wallace William	7869	800	John Gilson	Fultoncrub	40		45		54		139	25	3475	300		3775			3775	417	3058		
Wallace William	6307	1200	W. Pelham	Fultoncrub	1/2						1/2	50	25	100					125	15	110		
					525 1/4		287		455		1267 1/4		34879	1820		36679			36679	4002	32277		

Assessment of Lots in the Town of Richwood

Union County, Ohio, for the Year 1870.

For Plats of all Lots described on this Page, see Page _____ of Plats.	DESCRIPTION OF PROPERTY.						Value of Lots. Dollars.
	IN WHOSE NAME ASSESSED.	ADDITION.	No. of In-Lot.	No. of Out-Lot.	WHAT PART OF LOT.	No. Feet Front.	
	Betty Williams	6293	4267		Mullins Creek B. & Claiborne	15	120
	Collier O	6307	1200	✓	W. Pelham	5/7	120
	Ferguson W. H.	6293	4367	✓	B. & Claiborne	5 1/2	225
	Graham John H. & J. H.	6307	1200	✓	W. Pelham	1 1/2	75
	Gill J. S.	✓	✓	✓	✓	3	180
	Graham John P.	✓	✓	✓	✓	1/2	200
	Hagan N. J.	6307	1200	✓	W. Pelham	3/4	✓
	Hyle Williams	6307	1200	✓	W. Pelham	1/8	225
	Landen Lope	6293	4267	✓	B. & Claiborne	1 3/4	105
	Morris Edward	6293	4267	✓	B. & Claiborne	2	100
	Allen A. H.	6293	4267	✓	B. & Claiborne	1/2	✓
	Minnible J. P.	6347	1200	✓	W. Pelham	1/4	60
	Stephens O. P.	6293	4267	✓	B. & Claiborne	1 1/4	63
	Smith Benjamin W.	6307	1200	✓	W. Pelham	1/2	120
	Sutherland Seth	✓	✓	✓	✓	1/8	225
	Wood John	6307	1200	✓	W. Pelham	9 1/2	1150
	Wetherman N. P.	✓	✓	✓	✓	1/8	✓
	Weiser Ruben	6307	1200	✓	W. Pelham	1/4	120
	Stephens O. P.				Lots No	223	30
	✓					224	30
	✓					225	30
	✓					226	28
	✓					227	28
	✓					228	27
	✓					229	25
	✓					230	24
	✓					231	23
	✓					233	20
	✓					233	40
						4472	

Value of all Buildings.			Total Value of Lots and Buildings.	Amount Added or Deducted by Co. Board of Equalization.		Total Value as Equalized by Co. Board.	Amount Added or Deducted by State Board of Equalization.		Total Value as Equalized by State Board.	REMARKS.
Houses.	Mills.	Other Buildings.		Added Dollars.	Deducted Dollars.		Added Dollars.	Deducted Dollars.		
			1200			1200	144		1056	
225			345			345	41		304	
			225			225	27		198	
			75			75	9		66	
			180			180	22		158	
325			525			525	63		462	
			225			225				
450			675			675	81		594	
			105			105	13		92	
300			300			300	36		264	Claims not in Corporation
			1800			1860	228		1537	
			62			62	8		54	
350			470			470	56		414	
350			575			575	69		506	
300	100		1450			1450	174		1276	All to Ruben Weiser
			120			120	14		106	
			30			30	4		26	
			30			30	4		26	
			30			30	4		26	
			28			28	3		25	
			28			28	3		25	
			27			27	3		24	
			25			25	3		22	
			24			24	3		21	
			23			23	3		20	
			20			20	2		18	
			40			40	5		35	
			2100			8472	1017		7455	

Assessment of Lots in the Town of Richmond

Union County, Ohio, for the Year 1870.

For Plats of all Lots described on this Page, see Page _____ of Plats.		DESCRIPTION OF PROPERTY.					Value of Lots.	Value of all Buildings.			Amount Added or Deducted by Co. Board of Equalization.		Amount Added or Deducted by State Board of Equalization.		REMARKS.		
In Whose Name Assessed.	Addition.	No. of In-Lot.	No. of Out-Lot.	WHAT PART OF LOT.	No. Feet Front.	No. Feet Depth.	Dollars.	Houses.	Mills.	Other Buildings.	Total Value of Lots and Buildings.	Added Dollars.	Deducted Dollars.	Total Value as Equalized by Co. Board.	Added Dollars.	Deducted Dollars.	Total Value as Equalized by State Board.
Aldous Simeon		68		all			575	250			1025			1025			123 902
Audrus Lewis		180		✓			50				50			50			6 44
Spencer ✓		787		all			45				45			45			5 40
Abrams Manser		176	15	E 1/2			75	300			275			275			33 242
Brick James Elizabeth		79		Part													
Barton Michael		98		all Part			230			150	380			380			45 335
✓		99		✓			200	400			600			600			72 528
Blake A J		43		all			495			1000	1495			1495			179 1316
✓		44		✓			396	300			696			696			83 611
✓		100		✓			250				250			250			30 220
Blake + Goodman		192		✓			50				50			50			6 44
✓		193		✓			50				50			50			6 44
Barriek Isaac		146		all			300	150			450			450			54 396
Brown James		40		all			200				200			200			24 176
✓		97		✓ Part			275	450			725			725			87 638 =
✓		188		✓ all			40				40			40			5 35
Bryton Woods		121					60				60			60			7 53
✓		122					60				60			60			7 53
Cook John A		127		all			300	325			625			625			75 550
✓		128		✓			200	200			400			400			48 352
✓		65		✓			50				50			50			6 44
✓		188		all			100	200			300			300			36 264
✓		189		✓			75				75			75			9 66
✓		190		✓			75				75			75			9 66
✓		194		✓			75				75			75			9 66
✓		195		✓			75				75			75			9 66
✓		191		✓			70				70			70			8 62 <i>Book after (In name of P. 280)</i>
Cook Samuel S		171		all			100	300			400			400			48 352
Garner Martha		113		all			115				115			115			14 101
✓		114		✓			125				125			125			15 110
							4711	2975	1150	8836	8836	1060	7776				
													62				
													512				

Assessment of Lots in the Town of *Richwood*

Union County, Ohio, for the Year 1870.

For Plats of all Lots described on this Page, see Page _____ of Plats.		DESCRIPTION OF PROPERTY.					Value of Lots.	Value of all Buildings.			Amount Added or Deducted by Co. Board of Equalization.		Total Value as Equalized by Co. Board.	Amount Added or Deducted by State Board of Equalization.		Total Value as Equalized by State Board.	REMARKS.		
In Whose Name Assessed.	Addition.	No. of In-Lot.	No. of Out-Lot.	WHAT PART OF LOT.	No. Feet Front.	No. Feet Depth.	Dollars.	Houses.	Mills.	Other Buildings.	Dollars.	Added Dollars.	Deducted Dollars.	Dollars.	Added Dollars.	Deducted Dollars.	Dollars.		
<i>Carman Joseph W</i>		130		<i>all</i>			200		1500		1700			1700			204	1496	<i>757</i>
✓		129		✓			225				225			225			27	198	<i>660</i>
✓		123		✓			20				20			20			2	18	<i>523</i>
✓		131		✓			70				70			70			8	62	<i>1287</i>
✓		11		✓			220	550			770			770			92	678	
✓		12		✓			225				225			225			27	198	
✓		132		✓			55				55			55			7	48	
✓		9		✓			150			100	250			250			30	220	
✓		10		✓			220	400			620			620			74	546	
✓		65		<i>1/4 South</i>			350			800	1150			1150			138	1012	
✓			11	<i>all</i>			8				8			8			1	7	
✓			10	✓			25				25			25			3	22	
✓		221		✓			30				30			30			4	26	
✓		222		✓			10				10			10			1	9	
✓		220		✓			30				30			30			4	26	
<i>Carman Charles E</i>		109		<i>all</i>			204				204			204			24	180	
✓		110		✓			140				140			140			17	123	
<i>Creaner Michael</i>		57		<i>all</i>			200				200			200			24	176	
<i>Cratty Thomas P</i>		15		<i>all</i>			275	400			675			675			81	594	
✓		16		✓			400		1000		1400			1400			168	1232	
✓			13	✓			100	125			225			225			27	198	
✓			16	✓			100				100			100			12	88	
<i>Carpenter and Patton</i>		61		<i>all</i>			450	250			700			700			84	616	
<i>Cole P. B</i>		156		<i>all</i>			200				200			200			24	176	
<i>Cumwright W. H</i>		79		<i>all</i>			180	400		200	380			380			46	334	
✓		80		✓			200	500			700			700			84	616	
<i>Cahill Constance J. Tallmadge</i>		52		<i>Par</i>			150			1100	1250			1250			150	1100	
<i>Cox P. W</i>		37		<i>all</i>			250	650			900			900			108	792	
✓		38		✓			200			180	380			380			46	334	
<i>Creaner Michael</i>		49		<i>all</i>			300	400		200	1100			1100			132	968	
✓		50		✓			400	400			800			800			96	704	
✓			8	✓															
✓			9	✓															
							5787				3675	1520	3590	19542	14522		1745	12797	

Assessment of Lots in the Town of Richmond

Union County, Ohio, for the Year 1870.

For Plats of all Lots described on this Page, see Page _____ of Plats.	DESCRIPTION OF PROPERTY.						Value of Lots.	
	IN WHOSE NAME ASSESSED.	ADDITION.	No. of In-Lot.	No. of Out-Lot.	WHAT PART OF LOT.	No. Feet Front.	No. Feet Depth.	Dollars.
	Jones Jeremiah		196		all			200
	Jennings Hugh T			1	all			150
	✓ ✓ ✓			2	✓			200
	✓ ✓ ✓			4	✓			115
	King E Y		105		all			205
	✓ ✓ ✓		106		✓			180
	✓ ✓ ✓		184		✓			50
	Landon George P		65		1/4			65
	✓ ✓ ✓		66		all			520
	Landon John		67		Part	18		260
	Landon Abijah		67		Part	15		230
	✓ ✓		60		all			225
	Landon James		197		all			100
	✓ ✓		198		✓			115
	Lewellen Clard		42		2/3			350
	Landon Nancy		5		all			225
	✓ ✓		6		✓			250
	✓ ✓		7		✓			75
	✓ ✓		8		✓			300
	Lyon William		107		all			140
	✓ ✓		108		✓			135
	Lavender Thomas		148		all			150
	✓ ✓		149		✓			150
	✓ ✓		150		✓			150
	Layton William		111		all			120
	✓ ✓		112		✓			115
	✓ ✓		153		✓			230
	Lichter Presley		139		all			335
	✓ ✓		21		✓			200
	✓ ✓		22		✓			170
	✓ ✓		23		✓			150
	✓ ✓		24		✓			130
								5920

Value of all Buildings.			Total Value of Lots and Buildings.	Amount Added or De- ducted by Co. Board of Equalization.		Total Value as Equalized by Co. Board.	Amount Added or De- ducted by State Board of Equal- ization.		Total Value as Equalized by State Board.	REMARKS.
Houses.	Mills.	Other Buildings.		Added Dollars.	Deducted Dollars.		Added Dollars.	Deducted Dollars.		
600		200	1000			1000	120	880		
			150			150	18	132		
		100	300			300	36	264		
			115			115	14	101		
			205			205	25	180		
		100	200			200	24	176		
			50			50	6	44		
			65			65	8	57		
		300	820			820	98	722		
		1000	1260			1260	151	1109		
			230			230	28	202		
375			600			600	72	528		
			100			100	12	88		
450		100	665			665	80	585		
		1500	1850			1850	322	1528		
			225			225	27	198		
			250			250	30	220		
			75			75	9	66		
350			650			650	78	572		
100			240			240	29	211		
			135			135	16	119		
			150			150	18	132		
			150			150	18	132		
			150			150	18	132		
			120			120	14	106		
320			335			335	40	295		
1000			1250			1250	150	1100		
100			435			435	52	483		
300			400			400	48	352		
			170			170	20	150		
			150			150	18	132		
			120			120	14	106		
3395		3300	12615			12615	1513	11102		

Assessment of Lots in the Town of Richmond

Union County, Ohio, for the Year 1870.

For Plats of all Lots described on this Page, see Page _____ of Plats.	DESCRIPTION OF PROPERTY.						Value of Lots. Dollars.
	ADDITION.	No. of In-Lot.	No. of Out-Lot.	WHAT PART OF LOT.	No. Feet Front.	No. Feet Depth.	
Leake Louis		160		all			130
✓		161		✓			175
Murrayman J M		17		all			175
Malin W D		133		all			175
✓		134		✓			180
✓		135		✓			200
✓		136		✓			250
McGe Thorge E		143		all			75
More Thomas C		144		all			195
McCracken Israel		82		✓			120
✓		83		✓			120
Moses Lorenzo		164		all			75
✓		165		✓			75
Moses Reynolds		62		Part all	22		500
✓		63		all Part	32		330
✓		64		✓			544
Marshall Catherine		63	8	Part	11		165
✓				all			200
Norris Edward		31		all			100
✓		32		✓			140
✓		33		✓			170
✓		34		✓			200
✓		35		✓			250
✓		36		✓			300
✓		25		✓			80
✓		26		✓			80
✓		27		✓			60
✓		28		✓			25
Neal Alexander		154		all			320

Value of all Buildings.			Total Value of Lots and Buildings.	Amount Added or Deducted by Co. Board of Equalization.		Total Value as Equalized by Co. Board.	Amount Added or Deducted by State Board of Equalization.		Total Value as Equalized by State Board.	REMARKS.
Houses.	Mills.	Other Buildings.		Added Dollars.	Deducted Dollars.		Added Dollars.	Deducted Dollars.		
		125	255			255	31		224	
200			375			375	45		330	
		175	350			350	42		308	
			175			175	21		154	
			180			180	22		156	
			200			200	24		176	
1000			1250			1250	150		1100	
			75			75	9		66	
200			295			295	35		260	
			120			120	14		106	
350			370			370	44		326	
			75			75	9		66	
			75			75	9		66	
		100	600			600	72		528	Att to Isaac Gray March 1870
			330			330	40		290	✓
1500			2044			2044	245		1799	✓
			165			165	20		145	
125			325			325	39		286	
		100	200			200	24		176	
			140			140	17		123	
			170			170	20		150	
			200			200	24		176	
			250			250	30		220	
400			750			750	90		660	
			80			80	10		70	
			80			80	10		70	
		400	460			460	55		405	
			25			25	3		22	
		100	420			420	50		370	
						10034	1204		5430	
			3725			10034				

5309

3725

1000 10034

**CLAIBOURNE TP.
UNION COUNTY
1870**