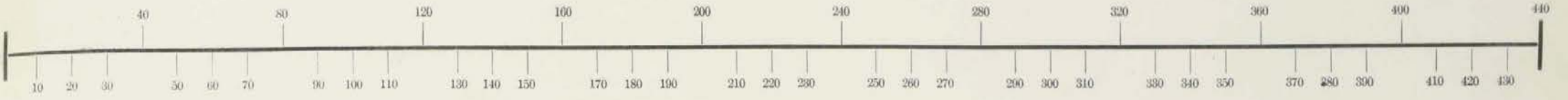


**DARBY TP.
UNION COUNTY
1870**

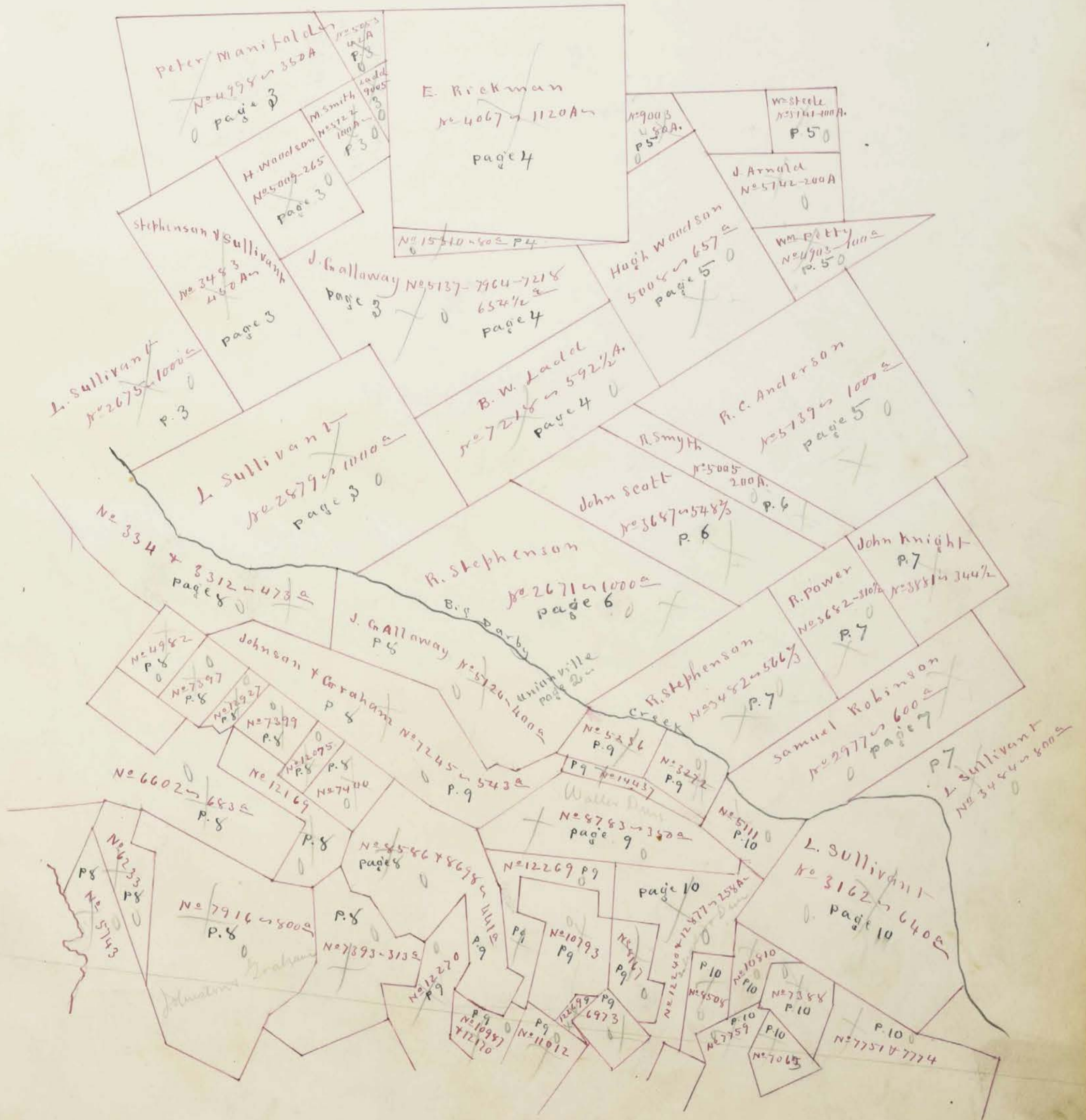
Section, No. Lot

Scale, 40 Rods to an Inch, or 10 Rods to 1-4 Inch.

Darby

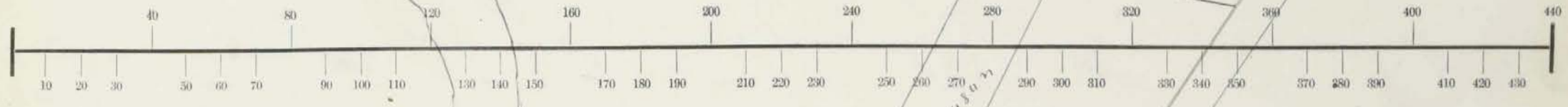


Original Surveys
Darby Township



Section, No. Lot

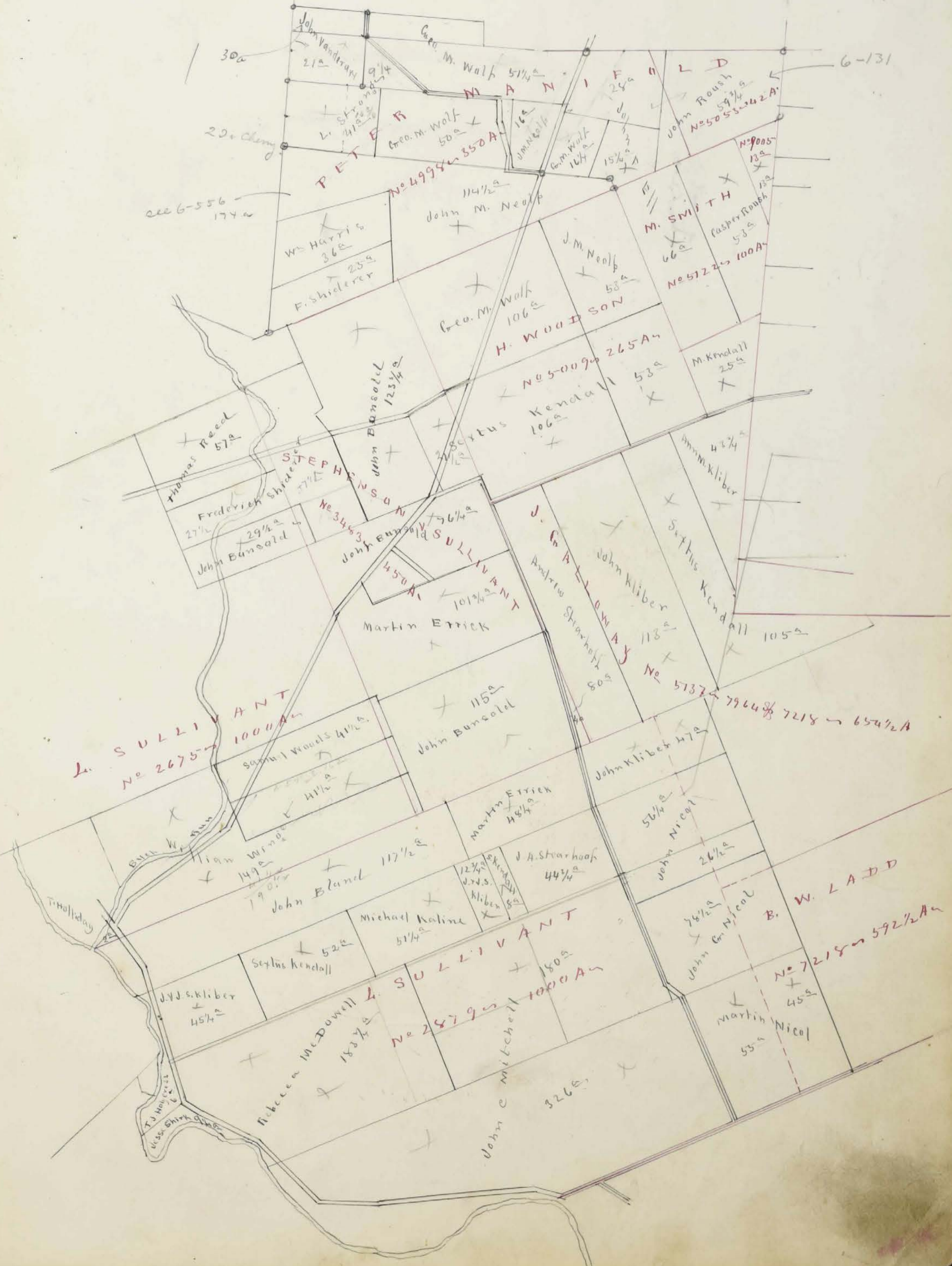
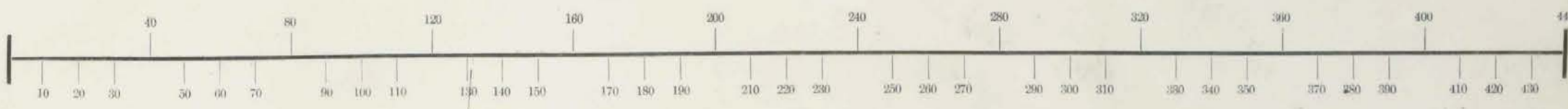
Scale, 40 Rods to an Inch, or 10 Rods to 1-4 Inch.



Section, No. _____ Lot _____

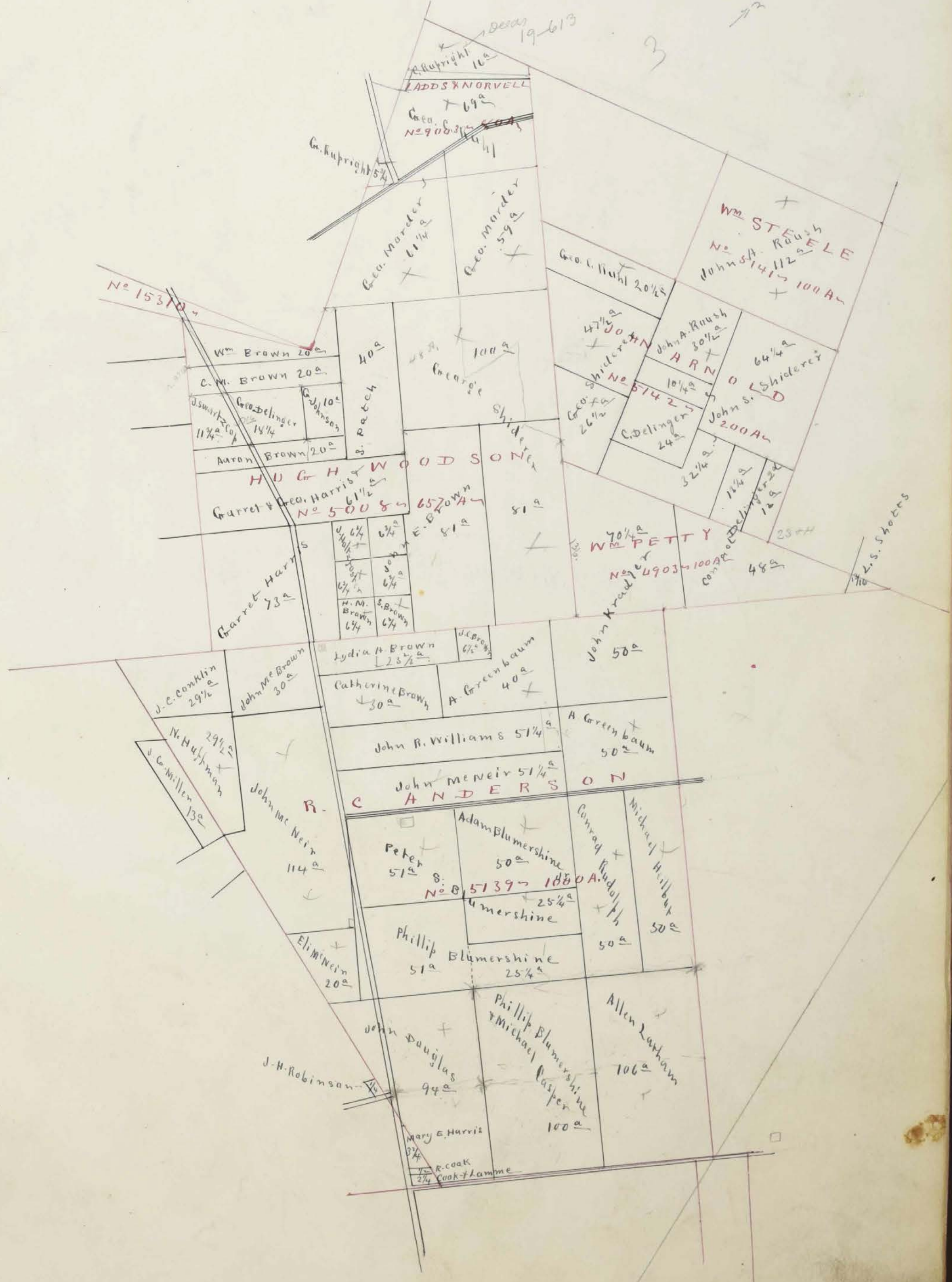
114 1/2
16
3-3
153 1/2

Scale, ⁸⁰40 Rods to an Inch, or ²⁰10 Rods to 1-4 Inch.



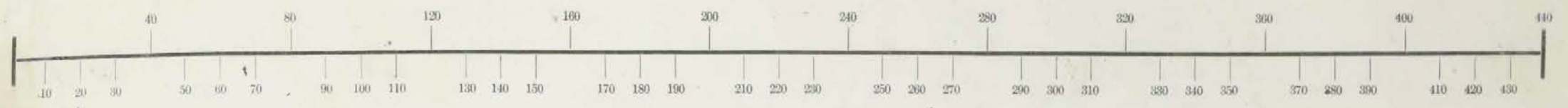
Section, No. _____ Lot _____

Scale, 40 Rods to an Inch, or 10 Rods to 1-4 Inch.



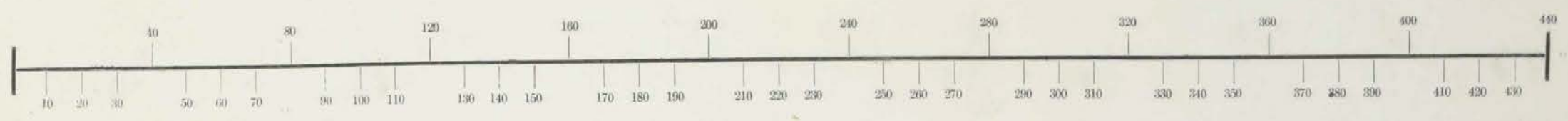
Section, No. Lot

Scale, ⁸⁰40 Rods to an Inch, or 10 Rods to 1-4 Inch.



Section, No. _____ Lot _____

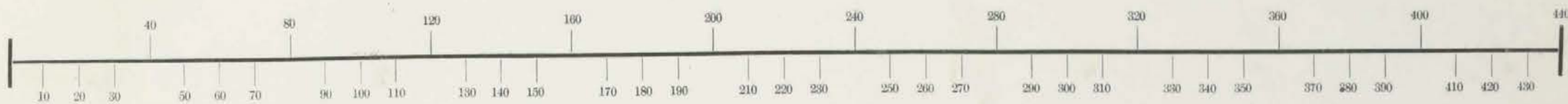
Scale, 40 Rods to an Inch, or 10 Rods to 1-4 Inch.



337
36
1

Section, No. _____ Lot _____

Scale, 40 Rods to an Inch, or 10 Rods to 1-4 Inch.



20-120
 21-120
 1-40
 50
 43-71
 106
 42
 720
 44-71

Assessment of Real Property in *Darby* Township,

Union County, Ohio, for the Year 1870.

For Plats of all Lands described on this Page, see Page _____ of Plats.			DESCRIPTION OF PROPERTY.	No. of Acres of Land Classified.						Whole No. of Acres.	Value per Acre excluding buildings.	Total Value of Lands, excluding Buildings.	Value of all Buildings.			Total Value of Lands and Buildings.	Amount Added or Deducted by Co. Board of Equalization.		Total Value as Equalized by Co. Board.	Amount Added or Deducted by State Board of Equalization.		Total Value as Equalized by State Board.	REMARKS.				
IN WHOSE NAME ASSESSED.	No. of Entry.	Orig'l Quantity.		ORIGINAL PROPRIETOR.	WATER COURSE.	Arable & Plow Land.		Meadow & Pasture Land.					Uncultiv'd & Wood Land.		Houses.		Mills.	Other Buildings.		Added Dollars.	Deducted Dollars.			Dollars.	Added Dollars.	Deducted Dollars.	Dollars.
						Acres.	H.	Acres.	H.				Acres.	H.													
Andrews Rufus	6973	100	J. Galloway	Darbycreek	18		42						60	29	1740			1740			1240	209	1531				
"	12269	12	Thos Lucas	"			16						16	29	464	400	100	964			960	115	845				
"	12246	258	Schooler and Dan	"					35 1/4				35 1/4	29	1024			1024			1024	123	900				
"	8167	100	Walter Dan	"			7		29 1/2				36 1/2	29	1044			1044			1044	125	919				
Andrews J. M.	3677	1566	R. Stephenson	"			40	100	15				155	24	3720	3000		400	4620			4620	554	4066			
"	2671	1000	"	"			24	132	50				208 3/4	24	4962			4962			4962	595	4367				
Andrews Rufus	10793	200	D. Chapman	"			40						40	29	1160			1160			1160	139	1021				
Adams Abraham P.	3881	334	John Knight	Darbycreek					50				50	18	900			900			900	108	792				
"	3484	800	L. Sullivant	"					74 1/4				74 1/4	20	1485			1485			1485	178	1307				
Andrews Richard H.	5739	1000	R. C. Anderson	Darbycreek									50	X													
Andrews Rufus	10793	200	D. Chapman	Darbycreek									20	X													
"	"	"	"	"			8						8	29	232			232			232	29	203				
Adams G. A.	3881	334	John Knight	Darbycreek	23		52						75	23	1725	200	150	2075			2075	249	1826				
Adams J. H.	3881	334	John Knight	Darbycreek	15		29		31				73	23	1679	200	100	1879			1879	205	1654				
Adams John C.	3881	334	John Knight	Darbycreek	25		23		25				73	23	1679	150	150	1979			1979	237	1741				
Blummershine J. A.	4067	1120	E. Rickman	Darbycreek	38		12		35				85	22	1870	100	100	2070			2070	248	1822				
Blummershine Adam	4067	1120	E. Rickman	Darbycreek	40		40						80	24	1920	100	100	2120			2120	254	1866				
Blummershine Peter	5739	1000	R. C. Anderson	Darbycreek	27		14		35				76	18	1368	100		1468			1468	177	1291				
Blummershine Philip	5739	1000	R. C. Anderson	Darbycreek	12		16		48				76	20	1520	100		1620			1620	194	1426				
"	"	"	"	"					30				50	12	600			600			600	72	528				
Brown Lydia A.	5739	1000	R. C. Anderson	Darbycreek	18				5 3/4				23 3/4	20	475	100		575			575	69	506				
Brown James C.	5739	1000	R. C. Anderson	Darbycreek					6 1/2				6 1/2	18	114			114			114	14	106				
Blummershine Adam J.	5739	1000	R. C. Anderson	Darbycreek					50				50	15	750			750			750	90	660				
Brown Christopher C.	5739	1000	R. C. Anderson	Darbycreek	30		5		5				40	18	720			720			720	86	634	All to Andrew Greenman			
Brown John M.	5739	1000	R. C. Anderson	Darbycreek	14		8		8				30	18	540	150		690			690	83	607				
Brown Catherine M.	5708	687	Hugh Woodem	Darbycreek	7				15				20	20	400			400			400	48	352	All to George Dellinger			
Brown Jacob	7218	592	B. W. Ladd	Darbycreek	27		37		8				72	22	1584	200		1784			1784	214	1570				
Brown Adam J.	7218	592	B. W. Ladd	Darbycreek	25		25		23				73	20	1460			1460			1460	175	1285				
"	14473	40	M. Sawyer	"					1				1	30	30			30			30	4	26				
"	1202	400	L. Sullivant	"					5				9	30	270	200	100	370			570	68	502				
					388		609		598				1594 3/4		35491	2500	1100	39035			39035		4652	34367			

Assessment of Real Property in *Darby* Township,

Union County, Ohio, for the Year 1870.

For Plats of all Lands described on this Page, see Page _____ of Plats.		DESCRIPTION OF PROPERTY.			No. of Acres of Land Classified.		Whole No. of Acres.		Total Value of Lands, excluding Buildings.	Value of all Buildings.			Total Value of Lands and Buildings.	Amount Added or Deducted by Co. Board of Equalization.		Total Value as Equalized by Co. Board.	Amount Added or Deducted by State Board of Equalization.		Total Value as Equalized by State Board.	REMARKS.		
In Whose Name Assessed.	No. of Entry.	Orig'l Quantity.	ORIGINAL PROPRIETOR.	WATER COURSE.	Arable & Plow Land.	Meadow & Pasture Land.	Uncultivat'd & Wood Land.	Acres.		H.	Dollars.	Dollars.		Houses.	Mills.		Other Buildings.	Added Dollars.			Deducted Dollars.	Dollars.
Brown Adam S	5124	400	J Galloway	Darbycreek			8 3/4		8 3/4	30	262						262			31	231	
✓	5236	100	L Sullivant	✓			1		1	30	30						30			4	26	
✓	5155	441	Wm W Graham	✓	40		40		80	29	2320						2320			278	2042	
✓	8783	350	W Dun	✓	35	74	15 1/2		124 1/2	29	3610	400		100			4110			493	3617	
✓	12269	141	Wm W Graham	✓		15			15	29	435						435			52	383	
✓	10793	341	Chapman	✓		27 1/4			27 1/4	29	790						790			95	695	
									256 1/2													
Brown Aaron	5108	657	H Woodson	Darbycreek	5		15		20	20	400						400			48	352	All to George Harris
✓	5142	200	John Arnold	✓	4		15		34 1/2	20	480						480			58	422	All to Grand Bellinger
Brown William	5108	657	H Woodson	Darbycreek	7		13		20	20	400						400			48	352	All to George Harris
✓	7218	592	R M Ladd	✓	41	38	20 3/4		99 3/4	22	2794	200		150			2544			305	2239	All to John M. Shickler
Blomushine Geo Adam	7218	592	R M Ladd	Darbycreek	51	14	56		121	22	2673	400					3073			369	2704	
Brown Andrew	8783	350	W Dun	Darbycreek	15	50	57		122	29	1098	400		150			1648			198	1450	
✓	7245	1120	E Rickman	✓			3 3/4		3 3/4	29	94						94			11	83	
✓	7245	543	John W Graham	✓																		
Brown Hannah M	5108	657	H Woodson	Darbycreek	6 3/4				6 3/4	20	135						135			16	119	
Brown Susan	5108	657	H Woodson	Darbycreek		6 3/4			6 3/4	20	135						135			16	119	
Bunsold John	2615	1450	Stephenson & Sullivant	Darbycreek	5	24 1/2			29 1/2	25	925	1000		150			1885			226	1661	
✓	3483	450	R Stephenson	✓	32	75	93		200	25	5000						5000			600	21400	
					10		105		115	20	2300						2300			278	2028	
Bryant Lydia W May	5105	657	H Woodson	Darbycreek																		
Bliss Leonard	3482	506	R Stephenson	Darbycreek	25	53	85 3/4		116	23	2668	600		250			3518			422	3096	
Bidwell Addison	7916	800	J W Johnson	Darbycreek		138 1/2			138 1/2	29	4396	1000		250			5846			701	5145	
Brown John E	5108	657	H Woodson	Darbycreek	48	25	25 3/4		98 3/4	20	1910	250					2160			259	1901	
Bland John	2879	1000	L Sullivant	Darbycreek	35	49	31 1/2		117 1/2	29	3045	500		200			3745			450	3297	
Binger John L	2879	1000	L Sullivant	Darbycreek	33	33	90		196	23	4508	400		300			5208			635	4583	
✓	5111	80	✓	✓	8	10 1/4	3 1/4		21 1/2	25	531						531			64	467	
Bowers J W	10810	75	W Dun	Darbycreek		1 1/2			1 1/2	28	42						42			5	37	
✓	7388	91	J Graham	✓		1/2			1/2	28	14						14			2	12	
✓	8508	80	W Dun	✓		1/2			1/2	28	14						14			2	12	
✓	2063	200	Galloway & Dun	✓		41 3/4			41 3/4	28	1169						1169			140	1029	
Bailey John P	5127						1/2		1/2	20	20						20			2	18	All to Wash. Permacover
					11	5	17 1/4		33 1/4	29	967						967			116	851	Not on Duplicate
					405 3/4	772 1/4	630 3/4		1810 1/4		42599	5150		1550			49279			5714	43365	

Assessment of Real Property in *Darby* Township,

Union County, Ohio, for the Year 1870.

For Plats of all Lands described on this Page, see Page _____ of Plats.	DESCRIPTION OF PROPERTY.				No. of Acres of Land Classified.				Whole No. of Acres.	Value per Acre, including Buildings.	Total Value of Lands, excluding Buildings.	Value of all Buildings.			Total Value of Lands and Buildings.	Amount Added or Deducted by Co. Board of Equalization.		Total Value as Equalized by Co. Board.	Amount Added or Deducted by State Board of Equalization.		Total Value as Equalized by State Board.	REMARKS.		
					Arable & Plow Land.		Meadow & Pasture Land.					Uncultiv'd & Wood Land.		Houses.		Mills.	Other Buildings.		Added Dollars.	Deducted Dollars.			Added Dollars.	Deducted Dollars.
					Acres.	H.	Acres.	H.				Acres.	H.	Dollars.		Dollars.	Dollars.		Dollars.	Dollars.			Dollars.	Dollars.
<i>Benson William</i>	<i>2671</i>	<i>1000</i>	<i>R. Stephenson</i>	<i>Darbycreek</i>	<i>3</i>				<i>3</i>	<i>30</i>	<i>90</i>	<i>100</i>		<i>190</i>			<i>190</i>	<i>23</i>	<i>167</i>					
<i>Bailey Catherine L</i>	<i>2671</i>	<i>1000</i>	<i>R. Stephenson</i>	<i>Darbycreek</i>	<i>13</i>	<i>59</i>	<i>13</i>		<i>87</i>	<i>25</i>	<i>2175</i>	<i>250</i>	<i>200</i>	<i>2625</i>			<i>2625</i>	<i>315</i>	<i>2310</i>					
<i>Brown Catherine</i>	<i>5739</i>	<i>1000</i>	<i>R. C. Andrews</i>	<i>Darbycreek</i>	<i>14</i>	<i>14</i>	<i>2</i>		<i>30</i>	<i>20</i>	<i>600</i>			<i>600</i>			<i>600</i>	<i>72</i>	<i>528</i>					
<i>Brown Isaac</i>	<i>2671</i>	<i>1000</i>	<i>R. Stephenson</i>	<i>Darbycreek</i>	<i>31</i>	<i>70</i>	<i>35</i>		<i>156</i>	<i>25</i>	<i>3900</i>	<i>250</i>	<i>300</i>	<i>4450</i>			<i>4450</i>	<i>534</i>	<i>3916</i>					
<i>Brown Silas</i>	<i>5705</i>	<i>200</i>	<i>R. Smyth</i>	<i>Darbycreek</i>	<i>8</i>	<i>25</i>	<i>5 1/2</i>		<i>38 1/2</i>	<i>21</i>	<i>808</i>	<i>100</i>	<i>0</i>	<i>908</i>			<i>908</i>	<i>109</i>	<i>799</i>					
<i>Caldwell John</i>	<i>3657</i>	<i>528</i>	<i>John Scott</i>	<i>Darbycreek</i>	<i>30</i>	<i>55</i>	<i>25</i>		<i>108</i>	<i>23</i>	<i>2484</i>			<i>2484</i>			<i>2484</i>	<i>298</i>	<i>2186</i>					
<i>Chapman Amos H</i>	<i>3162</i>	<i>640</i>	<i>S. Sullivant</i>	<i>Darbycreek</i>	<i>25</i>	<i>15</i>	<i>20</i>		<i>60</i>	<i>29</i>	<i>1740</i>			<i>1740</i>			<i>1740</i>	<i>209</i>	<i>1531</i>					
<i>Chapman Annis</i>	<i>3711</i>	<i>80</i>	<i>S. Sullivant</i>	<i>Darbycreek</i>			<i>13 1/2</i>		<i>13 1/2</i>	<i>25</i>	<i>337</i>			<i>337</i>			<i>337</i>	<i>40</i>	<i>297</i>					
	<i>3162</i>	<i>640</i>			<i>21</i>	<i>10</i>	<i>10</i>		<i>41</i>	<i>25</i>	<i>1025</i>	<i>200</i>	<i>150</i>	<i>1375</i>			<i>1375</i>	<i>165</i>	<i>1210</i>					
<i>Cowase Reab H</i>	<i>7245</i>	<i>543</i>	<i>Johnson & Johnson</i>	<i>Darbycreek</i>	<i>15</i>	<i>35</i>	<i>77 1/2</i>		<i>127 1/2</i>	<i>29</i>	<i>3697</i>	<i>250</i>	<i>100</i>	<i>4047</i>			<i>4047</i>	<i>480</i>	<i>3561</i>					
	<i>8585</i>	<i>441</i>	<i>Drue and Graham</i>		<i>10</i>	<i>35</i>	<i>55</i>		<i>100</i>	<i>29</i>	<i>2900</i>			<i>2900</i>			<i>2900</i>	<i>348</i>	<i>2552</i>					
	<i>5724</i>	<i>400</i>	<i>J. Galloway</i>		<i>15</i>	<i>5</i>	<i>26</i>		<i>46</i>	<i>40</i>	<i>1840</i>	<i>200</i>	<i>100</i>	<i>2140</i>			<i>2140</i>	<i>257</i>	<i>1883</i>					
<i>Cole W. D</i>	<i>5724</i>	<i>400</i>	<i>J. Galloway</i>	<i>Darbycreek</i>					<i>1 1/2</i>															
<i>Cassil John</i>	<i>5705</i>	<i>200</i>	<i>R. Smyth</i>	<i>Darbycreek</i>					<i>107</i>															
<i>Cowase John R</i>	<i>3682</i>	<i>654</i>	<i>Powers and others</i>	<i>Darbycreek</i>	<i>15</i>	<i>28</i>	<i>37</i>		<i>80</i>	<i>23</i>	<i>1840</i>	<i>250</i>	<i>100</i>	<i>2190</i>			<i>2190</i>	<i>263</i>	<i>1927</i>					
<i>Cunningham J. I</i>	<i>3381</i>	<i>344</i>	<i>J. King</i>	<i>Darbycreek</i>	<i>23</i>	<i>12</i>	<i>13</i>		<i>48</i>	<i>22</i>	<i>1056</i>	<i>200</i>		<i>1256</i>			<i>1256</i>	<i>150</i>	<i>1106</i>					
<i>Cole P. B</i>	<i>10793</i>	<i>200</i>	<i>D. C. Chapman</i>	<i>Darbycreek</i>					<i>33</i>															
<i>Cooklin Joel C</i>	<i>5705</i>	<i>200</i>	<i>R. Smyth</i>	<i>Darbycreek</i>	<i>9</i>	<i>19</i>	<i>11</i>		<i>39</i>	<i>18</i>	<i>702</i>			<i>702</i>			<i>702</i>	<i>84</i>	<i>618</i>					
	<i>5739</i>	<i>1000</i>	<i>R. C. Andrews</i>		<i>12</i>		<i>17 1/2</i>		<i>29 1/2</i>	<i>18</i>	<i>531</i>	<i>100</i>		<i>631</i>			<i>631</i>	<i>76</i>	<i>555</i>					
<i>Casper Michael</i>	<i>5139</i>	<i>1000</i>	<i>R. C. Andrews</i>	<i>Darbycreek</i>			<i>50</i>		<i>20</i>	<i>12</i>	<i>600</i>			<i>600</i>			<i>600</i>	<i>72</i>	<i>528</i>	<i>Should be 50 acres</i>				
<i>Cook S. Samuel</i>	<i>5705</i>	<i>200</i>	<i>R. Smyth</i>	<i>Darbycreek</i>	<i>2</i>	<i>70</i>			<i>2 3/4</i>	<i>25</i>	<i>68</i>	<i>250</i>		<i>318</i>			<i>318</i>	<i>38</i>	<i>280</i>					
					<i>246 3/4</i>	<i>380</i>	<i>433</i>		<i>1059 3/4</i>		<i>26593</i>	<i>2150</i>	<i>950</i>	<i>29493</i>			<i>29493</i>	<i>3139</i>	<i>21924</i>					

Assessment of Real Property in *Darby* Township,

Union County, Ohio, for the Year 1870.

For Plats of all Lands described on this Page, see Page _____ of Plats.			DESCRIPTION OF PROPERTY.		No. of Acres of Land Classified.						Whole No. of Acres.	Value per Acre as Equalized by Building.	Total Value of Lands, excluding Buildings.	Value of all Buildings.			Total Value of Lands and Buildings.	Amount Added or Deducted by Co. Board of Equalization.		Total Value as Equalized by Co. Board.	Amount Added or Deducted by State Board of Equalization.		Total Value as Equalized by State Board.	REMARKS.
In Whose Name Assessed.	No. of Entry.	Orig'l Quantity.	ORIGINAL PROPRIETOR.	WATER COURSE.	Arable & Plow Land.	H.	Meadow & Pasture Land.	H.	Uncultiv'd & Wood Land.	H.				Houses.	Mills.	Other Buildings.		Added Dollars.	Deducted Dollars.		Dollars.	Added Dollars.		
Deolinger Conrad 2 ^d	4903	1000	J. Galloway	Darby creek	20		20		4		48 1/4	20	960	350		200	1570			1570	181	1329		
Deolinger Conrad 1 st	4067	1120	E. Rickman	Darby creek	25		310		25		100	20	2000	200		100	2300			2300	276	2024		
Deolinger Conrad	5742	200	John Arnold	Darby creek	8		12		5 1/2		25 1/4	20	3105				3105			505	60	445		
Deolinger George	4067	1120	E. Rickman	Darby creek	16		10		34 1/2		60 1/2	20	1205	150			1355			1355	163	1192		
	3708	200	R. Smyth	" "	14		4		1/2		18 1/4	20	365				365			365	44	321		
Doekum Lester	5582 5678	441	Sam'l Graham	Darby creek	22		40		20		82	28	2296	300			2596			2596	312	2284		
Doelp John J.	4067	1120	E. Rickman	Darby creek	58		24		39 1/2		121 1/2	20	2420	150			2570			2570	308	2262		
Dasher Philip	4067	1120	E. Rickman	Darby creek	5		25		10		40	25	920	150			1070			1070	125	942		
Damm Leonard	4067	1120	E. Rickman	Darby creek	19		15		34 3/4		68 3/4	20	1375	200			1575			1575	189	1386		
Douglas John	5737	1000	R. C. Anderson	Darby creek	15		33		19		94	87	20	1880	250			2130			2130	256	1874	Apprais'd at 94 1/2
Hinner Nehemiah	6602	683	J. Galloway	Darby creek			194				194	20	3880				3880			3880	466	3414		
	7916	800	J. Johnson	" "			15				15	29	435	400	100		935			935	113	823		
	12169	200	Law Smith	" "	40				57 1/4		97 1/4	29	2646				2646			2646	317	2329		
Fray B. D.	5167	100	W. Dan	Darby creek	10		28		20		58	29	1682	400	100		2182			2182	262	1920		
Harguier Daniel	2671	1000	R. Stephenson	Darby creek	2						2	30	60	100			160			160	19	141		
Harguier A. J.	2671	1000	R. Stephenson	Darby creek	15		15		21		51	25	1275	300	200		1775			1775	213	1562		
Holbrough Adam	4067	1120	E. Rickman	Darby creek	5		12		28		45	20	900				900			900	108	792		
Hairbanks L. M.	3487 3482 3682	548 878	John Scott Stephenson	Darby creek	17 53		45 152		54 15		116 200	28 25	2668 3700		300 500		2968 6100			2968 6100	356 732	2612 5368		
Jells John Adam	4067	200	R. Smyth	Darby creek	5		10				15	20	300				300			300	36	264		
Jell Frederick	4998	350	P. Manifold	Darby creek	6		3		19		25	25	700				700			700	84	616		
Jell John H.	4998 5132	350 100	P. Manifold R. Smyth	Darby creek			15 3/4 22		8		15 3/4 66	25 25	393 1630			100	393 1880			393 1880	47 226	346 1654		
Orick Martin	3483 2879	450 1000	Sullivan Stephens L. Sullivan	Darby creek	31 34		31 14 1/2		39 3/4		101 1/2 48 1/2	25 25	2543 1115	600			3143 1115			3143 1115	377 134	2766 981	101 1/2	
					465		744 1/2		496		1703 1/2		39153	4300	1600		45053			45053	5406	37647		

Assessment of Real Property in Darby Township,

Union County, Ohio, for the Year 1870.

For Plats of all Lands described on this Page, see Page _____ of Plats.				DESCRIPTION OF PROPERTY.					No. of Acres of Land Classified.			Whole No. of Acres.	Value per Acre including Buildings.	Total Value of Lands, excluding Buildings.	Value of all Buildings.			Total Value of Lands and Buildings.	Amount Added or Deducted by Co. Board of Equalization.		Total Value as Equalized by Co. Board.	Amount Added or Deducted by State Board of Equalization.		Total Value as Equalized by State Board.	REMARKS.
In Whose Name Assessed.	No. of Entry.	Orig'l Quantity.	ORIGINAL PROPRIETOR.	WATER COURSE.	Arable & Plow Land.	Meadow & Pasture Land.	Uncultiv'd & Wood Land.	Acres.	H.	Acres.	H.				Acres.	H.	Houses.		Mills.	Other Buildings.		Added Dollars.	Deducted Dollars.		
Guy James	3757	447	Wm Dem	Darbycreek		51	35 1/2	40	30	1200						300		1700			1700	204	1496		
	3774	640	L. Sullivan		67	69	10 1/4	145 1/4	30	4372								4372			4372	525	3847		
Preubauer Michael	5705	200	R. Smyth	Darbycreek	21	8	22	51	15	915								915			915	110	803	X	
Preubauer Andrew	5739	1000	R. C. Anderson	Darbycreek	20	5	25	50	15	750	100							850			850	102	748		
Harris Garrett	5708	657	Hugh Woodson	Darbycreek	16	44	20 1/2	50 1/2	98 1/2	20	1610	300							1910			1910	229	1681	
Holyers David	7393	313	J. Graham	Darbycreek	29	82	15	122	29	3535	300		200						4235			4235	509	3729	
	8586	441	Don W. Graham		25	120	36	181	29	5249									5249			5249	630	4619	
	7916	800	J. Graham		15	34	25	74	29	2146	300		100						2546			2546	305	2241	
	12075	55	H. Woodson				26 3/4	26 3/4	20	395									395			395	64	471	All to Amos S. Sarge
	7420	100	H. Chambers		50	13	37	100	20	2000									2000			2000	240	1760	
	12169	200	Sam Smith				8 1/2	8 1/2	20	170									170			170	20	150	
	5724	400	J. Galloway		4	17 1/2		19 1/2	25	490									490			490	59	431	
	7124						1 1/2	1 1/2	40	60		600							660			660	79	581	1 acre to W. B. Dunfee
					3 1/2			6 1/2	40	220	200								420			420	50	370	
								3 1/4																	
Holyers John	10747	230	Chapman & Co	Darbycreek	24	30	10	84	29	2436	400		100						2936			2936	352	2584	
	12269	300	D. Chapman																						
Hann Joseph	3687	548	J. Scott	Darbycreek	59	65	45	196	25	2355	400								2755			2755	331	2427	
	5705	200	R. Smyth		4	8	3	15	20	307									307			307	37	270	
Huffman Nicholas	5739	1000	R. C. Anderson	Darbycreek	10	17	2 1/2	29 1/2	15	331									331			331	64	467	
Harper A. J.	5724	400	J. Galloway	Darbycreek			3/4	3/4	40	30			100						130			130	16	114	X
Holyers Thos J	3811	200	L. Sullivan	Darbycreek			3 1/4	3 1/4	15	49									49			49	6	43	X
	2879	100			6			6	35	90									90			90	11	79	
Huffman Joz M	4067	1120	E. Rickman	Darbycreek			5	5	20	100									100			100	12	88	
Holyers Lysander P	7245	543	John W. Graham	Darbycreek	19		5	17	40	680									680			680	82	598	All to Joseph King
Harris William	4998	350	P. Mansfield	Darbycreek			36	36	23	528									528			528	99	729	
Harris William J	5724	400	J. Galloway	Darbycreek			1/2	1/2	30	15									15			15	2	13	
Harris Jozef	5008	657	Hugh Woodson	Darbycreek	20	20	21 1/2	61 1/2	63 1/2	20	7230	300		200					1730			1730	208	1522	X
Heilbr Michael	5739	1000	R. C. Anderson	Darbycreek	15	5	30	50	15	750	100								850			850	102	748	
					368 1/2	575 1/2	416 3/4	1361		32662	3500	600	1000	37062					37062			41044	33614		

8752
33614

For Plats of all Lands described on this Page, see Page _____ of Plats.			DESCRIPTION OF PROPERTY.				No. of Acres of Land Classified.					Whole No. of Acres.	Value per Acre including Buildings.	Total Value of Lands, excluding Buildings.	Value of all Buildings.			Total Value of Lands and Buildings.	Amount Added or Deducted by Co. Board of Equalization.		Total Value as Equalized by Co. Board.	Amount Added or Deducted by State Board of Equalization.		Total Value as Equalized by State Board.	REMARKS.				
In Whose Name Assessed.	No. of Entry.	Orig'l Quantity.	ORIGINAL PROPRIETOR.	WATER COURSE.	Arable & Plow Land.	Meadow & Pasture Land.	Uncultiv'd & Wood Land.	Acres.	H.	Acres.	H.				Acres.	H.	Houses.		Mills.	Other Buildings.		Added Dollars.	Deducted Dollars.			Added Dollars.	Deducted Dollars.		
Hollidge Thomas	2075	1000	L Sullivant	Darbycreek										2															
Harris Mary E	5001	200	R Smith	Darbycreek	3	3/4								3 3/4	25	93				93		93	11	82					
Harris Nancy	3687	548	John Scott	Darbycreek	20	17	26							63	23	1449	100			15249		15249	186	1363					
Harris George	5008	651	H Woodson	Darbycreek																									
Holyfather Jacob	5008	651	H Woodson	Darbycreek	6	3/4								13 1/2	20	270				270		270	32	238					
Johnson Griffin	5008	651	H Woodson	Darbycreek			10							10	20	200				200		200	24	176	All to Garrett Harris				
Kear Airau	5743	200	J Galloway	Little Darby		48								48	29	1392				1392		1392	167	1225					
	6233	654		Darbycreek	20	26								46	29	1334	500	200		2034		2834	244	1790					
					22	29								51	29	1479				1479		1479	178	1301					
Kendall Sextus	5723	654	J Galloway	Darbycreek	4	35	66							105	20	2100				2100		2100	252	1548					
	5008	657	H Woodson		10	15	28							53	20	1060				1060		1060	127	933					
	2879	1000	L Sullivant		20	32	8							60	23	1200				1200		1200	144	1056					
	5009	265	H Woodson		40	20	46 1/2							106 1/2	23	2435	600	100		3138		3138	376	2762					
	3483	480	R Stephenson				22							22	23	506				506		506	61	445					
Kendall Margaret	5707	654	J Galloway	Darbycreek			25 1/2							25 1/2	20	510				510		510	61	449					
Kliber Margaret Ann	5707	654	J Galloway	Darbycreek			43							43	20	860				860		860	103	757					
Kliber John	5707	654	J Galloway	Darbycreek	24	15	34							113	20	2260				2260		2260	271	1989					
	2579	1306 1/2	Sullivan Ladd				13							47	20	940	100	100		1140		1140	137	1003					
Kliber John John S	2879	1000	L Sullivant	Darbycreek	44		14							58	28	1624	400			2024		2024	243	1791					
Kulhman John A	4067	1120	E Puckman	Darbycreek	53	50	57							160	22	3520	500			4020		4020	482	3338					
Kradler John	4903	100	W Post	Darbycreek	27	14	29 1/4							70 1/4	20	1405	200		250	1855		1855	223	1632					
	3739	1000	R B Anderson		4	14	32							50	18	900				900		900	108	792					
Kilbury Asa	3162	640	L Sullivant	Darbycreek	35	60	39 1/4							152 1/4	32	4936	700		400	6036		6036	724	5312					
Kilbury John	3162	640	L Sullivant	Darbycreek	8	15	32 1/4							55 1/4	29	1602	500			2102		2102	252	1850					
Kilbury Thomas	3162	640	L Sullivant	Darbycreek	60	24	66 1/4							150 1/4	32	4808		300		5108		5108	613	4495					
King H J	5743	200	J Galloway	Little Darby	10	21								31	29	899	200			1099		1099	133	966					
Kaline Michael	2879	1000	L Sullivant	Darbycreek	27	24 1/4								57 1/4	20	1025	300			1325		1325	159	1166					
Kratton J P	5724	400	J Galloway	Darbycreek		1								1	40	20				40		40	57	357					
					488	479	4680 1/4							1592 1/2		38850	4100		1350	44300		14310	5316	38784					

Assessment of Real Property in Darby Township,

Union County, Ohio, for the Year 1870.

For Plats of all Lands described on this Page, see Page _____ of Plats.			DESCRIPTION OF PROPERTY.		No. of Acres of Land Classified.						Whole No. of Acres.	Value per acre excluding buildings.	Total Value of Lands, excluding Buildings.	Value of all Buildings.			Total Value of Lands and Buildings.	Amount Added or Deducted by Co. Board of Equalization.		Total Value as Equalized by Co. Board.	Amount Added or Deducted by State Board of Equalization.		Total Value as Equalized by State Board.	REMARKS.
In whose name assessed.	No. of Entry.	Orig'l Quantity.	ORIGINAL PROPRIETOR.	WATER COURSE.	Arable & Plow Land.	II.	Meadow & Pasture Land.	II.	Uncultiv'd & Wood Land.	II.				Houses.	Mills.	Other Buildings.		Added Dollars.	Deducted Dollars.		Added Dollars.	Deducted Dollars.		
Lutheran Church 1 st	4007	1120	E. Rickman	Darbycreek			10				10	20	200	250		450		450	54	390				
Lutheran Church 2 nd	4007	1120	E. Rickman	Darbycreek			25				25	20	500	400		900		900	108	792				
Latham Allen	5139	1000	R. S. Audemus	Darbycreek					106		106	12	1272			1272		1272	153	1119				
Mitchell Daniel	2671	1000	R. Stephens	Darbycreek	18		87		118		233	24	5358	250	200	5808		5808	697	5111				
Mitchell Edward D	2671	1000	R. Stephens	Darbycreek	8		24 1/2		12		44 1/2	24	1068			1068		1068	128	940				
Martin James	3312	273	J. Johnson	Darbycreek	52		43		35		150	30	4500	800	400	5700		5700	684	5016				
	7245	543			25		93				80	30	2400	800		3200		3200	387	2810				
Mitchell John W	2879	1000	L. Sullivan	Darbycreek	185		140		181		506	25	12650	1200	200	14050		14050	1680	12364				
Morgan J	5724	400	J. Falloway	Darbycreek	7		8 1/4				15	30	450	300		750		750	92	658				
Marsh George	3484	800	L. Sullivan	Darbycreek	3		3				6	10	60			60		60	7	53				
	3162	640			4				3 3/4		7 3/4	10	77			77		77	9	65				
Miller John J	5005	200	R. Smyth	Darbycreek	4		5		4		13	18	234			234		234	28	206				
Moss R J	4982	100	Bayler King	Darbycreek	5		45				50	30	1500	800	200	2500		2500	300	2200				
Morden George	5008	200	H. Morden	Darbycreek	26		18		15 1/4		59 1/4	20	1195			1195		1195	143	1052				
McDowell Samuel	11012	141	W. Lucas & Dan	Darbycreek	1		20		6		27	28	786			786		786	88	698				
	12267		D. Chapman		5		20		9		34	28	980			980		980	114	866				
	10907																							
	12180																							
McCullough Samuel	3484	800	L. Sullivan	Darbycreek	10		20				30	20	600			600		600	72	528				
Mikler John	5739	1000	R. S. Audemus	Darbycreek	57		61		47 3/4		165 3/4	20	2315	100	500	2715		2715	326	2389				
Mintz Sarah H	10793	200	D. Chapman		10		12		20 1/4		42 1/4	29	1225	100	100	1425		1425	171	1254				
Mitchell David	5724	80	J. Falloway	Darbycreek	15		5		22 2/3		42 2/3	28	1183	500		1683		1683	202	1481				
	7245	543	J. Johnson		8		15		25		48	25	1200			1200		1200	144	1056				
Mintz Alfred	10793	200	D. Chapman	Darbycreek	8		8				16	29	464			464		464	52	408				
Manifold William	5711	80	L. Sullivan	Darbycreek	4 3/4						4 3/4	25	118	200		318		318	38	280	all to Child Martha			
Mader John W	7218	592	B. W. Ladd	Darbycreek	60		42		50		152	150	22	3344	200	100	3644		3644	437	3207			
Mitchell Elijah	5724	80	J. Falloway	Darbycreek	30		40				70	30	2100	500	200	2800		2800	336	2464				
	7245	543	J. Johnson		40		40		49 1/4		139 1/4	28	3619			3619		3619	434	3185				
Morden George	7003	80	B. W. Ladd	Darbycreek	18		21		22 1/4		61 1/4	20	1225	500	150	1875		1875	225	1650				
Mikler Eli	5739	1000	R. S. Audemus	Darbycreek	2		16		2		20	20	400			400		400	48	352				
McDowell Rebecca	2879		L. Sullivan		71		50		62 3/4		183 3/4	29	3326	700	400	4426		4426	571	3855				
					676 3/4		893 3/4		812 1/2		2322 1/2		56278	7600	2250	66228		66228	7935	58123				

Assessment of Real Property in *Darby* Township,

Union County, Ohio, for the Year 1870.

For Plats of all Lands described on this Page, see Page _____ of Plats.	DESCRIPTION OF PROPERTY.				No. of Acres of Land Classified.						Whole No. of Acres.	Value per Acre of Building.	Total Value of Lands, excluding Buildings.	Value of all Buildings.			Total Value of Lands and Buildings.	Amount Added or Deducted by Co. Board of Equalization.		Total Value as Equalized by Co. Board.	Amount Added or Deducted by State Board of Equalization.		Total Value as Equalized by State Board.	REMARKS.		
	In Whose Name Assessed.	No. of Entry.	Orig'l Quantity.	ORIGINAL PROPRIETOR.	WATER COURSE.	Arable & Plow Land.	Meadow & Pasture Land.	Uncultiv'd & Wood Land.	Acres.	H.				Acres.	H.	Acres.		H.	Houses.		Mills.	Other Buildings.			Added Dollars.	Deducted Dollars.
Stolp John M	5009	265	H. Woodson	Darbycreek	23	8	22						53	20	1060			1060			1060		127	933		
✓	4998	350	P. Mansfield	✓	3	54	37 1/2						114 1/2	20	2290	100	100	2490			2490		299	2191		
Stolp John M	4998	350	P. Mansfield	Darbycreek																						
Stol Charles C	4067	1120	E. Rickman	Darbycreek	11	16	34						61	20	1220			1220			1220		146	1074		
Stol Conrad	4067	1120	E. Rickman	Darbycreek	35	30	31						96	20	1920	200		2100			2100		252	1348		
Stol John	2879	1120	S. Sullivant	Darbycreek	22	22	39						83	20	1660	100		1760			1760		311	1549		
Stol John G	2879	1120	S. Sullivant	Darbycreek	22	12	44 1/2						78 1/2	20	1570		100	1670			1670		200	1470	All to George Meade	
Stol Martin	2879	1120	S. Sullivant	Darbycreek	16	13	26						55	20	1100	100		1200			1200		144	1056		
✓	7218	592	B. W. Ladd	✓	16	3	26						48	20	900			900			900		108	792		
Stolp Martin	4998	350	P. Mansfield	Darbycreek	13	3							16	20	320			320			320		38	382		
Patek Samuel	5008	657	H. Woodson	Darbycreek	17	2	21						40	12 1/2	20	800	X		800			800		96	704	All to George Meade
Patnek Lydia	6263	1000	J. Little Hudson	Darbycreek									32			X										All to charged to Rent
Patek Harmon	3881	344	John Wright	Darbycreek			37 1/2						37 1/2	15	559			559			559		68	491		
Page Thomas	5124	400	J. Galloway	Darbycreek	34								34	20	15	100	X		115		115		14	101		
Perry Edson	5124 7393	713	Galloway & Graham	Darbycreek	13	20	42						75	29	2175	100		2275			2275		273	2002		
					191 3/4	153	981 1/2			756 1/4	15569	700	200	16469			16469			1976	1493			14483		

Assessment of Real Property in *Darby* Township,

Union County, Ohio, for the Year 1870.

For Plats of all Lands described on this Page, see Page _____ of Plats.	DESCRIPTION OF PROPERTY.				No. of Acres of Land Classified.						Total Value of Lands, excluding Buildings.	Value of all Buildings.			Total Value of Lands and Buildings.	Amount Added or Deducted by Co. Board of Equalization.		Total Value as Equalized by Co. Board.	Amount Added or Deducted by State Board of Equalization.		Total Value as Equalized by State Board.	REMARKS.	
					Arable & Plow Land.		Meadow & Pasture Land.		Uncultiv'd & Wood Land.			Houses.	Mills.	Other Buildings.		Added Dollars.	Deducted Dollars.		Added Dollars.	Deducted Dollars.			
					Acres.	H.	Acres.	H.	Acres.	H.		Dollars.	Dollars.	Dollars.		Dollars.	Dollars.		Dollars.	Dollars.			Dollars.
<i>Reed Thomas</i>	2675- 3483	1450	<i>Sullivan & Leptun</i>	<i>Darby creek</i>	21		24		12			57	25	1425	300		1925			1725	207	1515	
<i>Rudolph Conrad</i>	5739	1000	<i>R. L. Andrews</i>	<i>Darby creek</i>	15		5		30			50	15	750	100		850			850	102	748	
<i>Rush John</i>	4995 5053	342	<i>P. Manifold</i>	<i>Darby creek</i>	15		29	3/4	15			59 1/4	25	1370			1370			1370	165	1205	
<i>Robinson John Jr</i>	2977	600	<i>J. Robinson</i>	<i>Darby creek</i>	30		50		20			100	25	2300	300	100	2700			2700	327	2376	
<i>Robinson W. H.</i>	2977	600	<i>J. Robinson</i>	<i>Darby creek</i>	39		81		40			157	22	3388	800	200	4388			4388	527	3861	
<i>Robinson Samuel</i>	3682	310	<i>Robert Power</i>	<i>Darby creek</i>	38		46	1/2				84 1/2	25	1932	150		2082			2082	250	1832	
<i>Robinson S. D.</i>	3482 3682	876	<i>Stephens & others</i>	<i>Darby creek</i>	40		75		69 1/2			184 1/2	25	4252	600	250	5082			5082	600	4472	
<i>Robinson D. M.</i>	5724	400	<i>J. Gallaway</i>	<i>Darby creek</i>	39		81	3/4	8			128 3/4	30	3862	800	500	5762			5762	619	4543	
<i>Robinson S. S.</i>	7245	543	<i>J. Johnson</i>	<i>Darby creek</i>	12		111					123	30	3690			3690			3690	443	3247	
<i>Robinson S. S.</i>	7395	86	<i>J. Chambers</i>	<i>Darby creek</i>	10		15					25	25	625			625			625	75	550	
<i>Robinson S. S.</i>	12075	55	<i>H. Woodson</i>	<i>Darby creek</i>			12	3/4				12 3/4	25	318			318			318	38	280	
<i>Robinson James</i>	2977	600	<i>Sau. Robinson</i>	<i>Darby creek</i>	66		50		114			230	29	6650	800	400	7850		X	7870	X 80	588	26 3/4 acres more than plat.
<i>Rush J. L.</i>	5008	657	<i>H. Woodson</i>	<i>Darby creek</i>																			
<i>Rush George Jr</i>	4067	1120	<i>E. Rickman</i>	<i>Darby creek</i>			10		35 1/2			45 1/2	22	1001	200	200	1401			1401	168	1233	
<i>Rush George</i>	7218	592 1/2	<i>B. W. Ladd</i>	<i>Darby creek</i>	27		5		46			78	22	1716			1716			1716	206	1510	
<i>Rush George</i>	15310	80	<i>Johnson & Gallaway</i>	<i>Darby creek</i>	24		12		40 1/2			76 1/2	22	1677			1677			1677	201	1476	800 for horse
<i>Rush Philip</i>	4067 7218	1120 592 1/2	<i>E. Rickman</i>	<i>Darby creek</i>	26		20		58			104	22	2288	450	350	3088			3088	370	2718	
<i>Rush Philip</i>	7218	592 1/2	<i>B. W. Ladd</i>	<i>Darby creek</i>	75		68		106			249	22	5478	100	100	5678			5678	681	4997	
<i>Rush John A</i>	5741	100	<i>W. L. Latt</i>	<i>Darby creek</i>	29		7		36			112	20	2240	1200	400	3840			3840	461	3379	
<i>Rush John A</i>	5742	200	<i>John Arnold</i>	<i>Darby creek</i>	25		3		2 1/2			30 1/2	20	610			610			610	73	537	
<i>Rush John P</i>	4067	1120	<i>E. Rickman</i>	<i>Darby creek</i>	11		11		47			69	20	1980	250		1630			1630	196	1434	
<i>Robert Gottlieb</i>	4067	1120	<i>E. Rickman</i>	<i>Darby creek</i>	3				40 1/2			43 1/2	20	870			870			870	104	766	
<i>Robinson J. R.</i>									1/2			1/2	20	5			5			5	4	4	J. W. Robinson
					599		745 1/2		760 1/2			2045		48495	6050	2500	57045			57045	6845	50207	

Assessment of Real Property in *Darby* Township,

Union County, Ohio, for the Year 1870.

For Plats of all Lands described on this Page, see Page _____ of Plats.	DESCRIPTION OF PROPERTY.				No. of Acres of Land Classified.				Whole No. of Acres.		Value per Acre, including Buildings.	Total Value of Lands, excluding Buildings.	Value of all Buildings.			Total Value of Lands and Buildings.	Amount Added or Deducted by Co. Board of Equalization.		Total Value as Equalized by Co. Board.	Amount Added or Deducted by State Board of Equalization.		Total Value as Equalized by State Board.	REMARKS.
					Arable & Flow Land.	Meadow & Pasture Land.	Uncultiv'd & Wood Land.						Houses.	Mills.	Other Buildings.		Added Dollars.	Deducted Dollars.		Added Dollars.	Deducted Dollars.		
							Acres.	H.															
<i>Rupnigh Gottlieb</i>	9003	80	<i>Ladd</i>	<i>Darbycreek</i>	5			11	16	20	320				320				38	252			
	3228	657	<i>H. Woodson</i>		5	3/4			5 3/4	20	115				115				14	101			
<i>Rush Casper</i>	4067	1120	<i>E. Rickman</i>	<i>Darbycreek</i>	30	12		38	80	25	2000	500		300	2800			2800	336	2404			
	5122	100	<i>M. Smith</i>		18	25		10	53	24	1272				1272			1272	153	1119			
	9005	13	<i>B. W. Ladd</i>					13	13	24	312				312			312	37	275			
<i>Reed Elizabeth</i>	3312	132	<i>L. Sullivant</i>	<i>Darbycreek</i>	25	48			73	28	2044	200			2244			2244		269	1975		
<i>Rice Moses P</i>	7397	101	<i>J. Johnson</i>	<i>Darbycreek</i>	20	93			113	29	3277	300			3577			3577	429	3148			
	4982		<i>E. King</i>		10	40		15	65	30	1950	800		100	2850			2850		342	2509		
	12931	40	<i>J. Spencer</i>			45			45	25	1125				1125			1125	135	990			
	12169	200	<i>Said Smyth</i>			76			76	25	1900				1900			1900		228	1672		
	12075	55	<i>H. Woodson</i>			15 1/2			15 1/2	25	387				387			387	40	340			
	7399	86	<i>J. Chambers</i>			61 1/4			61 1/4	25	1531				1531			1531		184	1347		
	6602	693	<i>J. Galloway</i>		50	50			100	20	2000				2000			2000		240	1760		
	2879	147	<i>L. Sullivant</i>																				
	7245	543	<i>John Graham</i>		1				1	100	100	500			600			600		72	528		
<i>Rice H</i>	5124	400	<i>J. Galloway</i>	<i>Darbycreek</i>	1	3/4			1 3/4	30	87				87			87		10	77		
<i>Robinson A. P</i>	3312	350	<i>L. Sullivant</i>	<i>Darbycreek</i>	37	67			104	29	3016	200		200	3416			3416		410	3006		
<i>Robinson J. Lins</i>	2671	1000	<i>R. Stephenson</i>	<i>Darbycreek</i>	16	10		13 3/4	39 3/4	25	993	1500			1143			1143		137	1006		
<i>Robinson James C</i>	5124	400	<i>J. Galloway</i>	<i>Darbycreek</i>	15	15		6 3/4	36 1/4	28	1015	300			1315			1315		158	1157		
<i>Ridgway Bazel</i>	2671	1000	<i>R. Stephenson</i>	<i>Darbycreek</i>	11	14		26	57	24	1224				1224			1224		147	1077		
<i>Ruhl Geo. C</i>	9003	80	<i>B. W. Ladd</i>	<i>Darbycreek</i>	36	20		13	69	20	1380	300		100	1780			1780		214	1566		
	5124	400	<i>J. Galloway</i>			19		1 1/2	20 1/2	20	410				410			410		49	361		
<i>Rush Barukand</i>	3687	548	<i>John Scott</i>	<i>Darbycreek</i>	60	40		74 1/4	174 1/4	25	4008	900		150	4358			4358		523	3835		
<i>Basel John</i>					40	37		30	107	16	1712				1712			1712		205	1507	<i>David Rice 102 acres not Duly</i>	
					381 1/2	697 3/4	25	8 1/4	1323		32178	3450		850	36478			36478		4377	32101		

Assessment of Real Property in *Darby* Township,

Union County, Ohio, for the Year 1870.

For Plats of all Lands described on this Page, see Page _____ of Plats.	No. of Entry.	Orig'l Quantity.	DESCRIPTION OF PROPERTY.	WATER COURSE.	No. of Acres of Land Classified.					Whole No. of Acres.	Value per Acre of Building.	Total Value of Lands, excluding Buildings.	Value of all Buildings.			Total Value of Lands and Buildings.	Amount Added or Deducted by Co. Board of Equalization.		Total Value as Equalized by Co. Board.	Amount Added or Deducted by State Board of Equalization.		Total Value as Equalized by State Board.	REMARKS.
					Arable & Plow Land.	Meadow & Pasture Land.	Uncultiv'd & Wood Land.	Acres.	H.				Acres.	H.	Acres.		H.	Houses.		Mills.	Other Buildings.		
<i>In whose name assessed.</i>			ORIGINAL PROPRIETOR.																				
<i>Sager Michael</i>	12240 12977	255	<i>Schooley and Durr</i>	<i>Darbycreek</i>					3	25	75				75			75		9	60		
<i>✓</i>	14437	40	<i>W. Sawyer</i>	<i>✓</i>					39	25	975				975			975		117	868		
<i>✓</i>	17113 17113 327336 17127	408	<i>L. Sullivant</i>	<i>✓</i>	40	64	80		184	25	4600	1950		400	6950			6950		834	6116		
<i>✓</i>	8783	358	<i>W. Durr</i>	<i>✓</i>	20	36	37		93	25	2325				2325			2325		279	2046		
<i>Sager Frederick</i>	5134	400	<i>J. Galloway</i>	<i>Darbycreek</i>	33	25	14	3/4	72 3/4	25	2037				2037			2037		244	1793		
<i>Shidner George</i>	5708 5742	687 200	<i>H. Woodson</i> <i>John Arnold</i>	<i>Darbycreek</i> <i>✓</i>	39	113	28		180	20	3600	1200		300	5100			5100		612	4488		
<i>✓</i>					22	29	23		74	20	1480				1480			1480		178	1302		
<i>Shidner John S</i>	5742	200	<i>John Arnold</i>	<i>Darbycreek</i>	33	24	49	3/4	106 3/4	20	2135	400		300	2835			2835		340	2495		
<i>Shidner John M</i>	4067 7218	1120 542 1/2	<i>E. Beckman</i> <i>B. W. Ladd</i>	<i>Darbycreek</i> <i>✓</i>	54	31	90		177	22	3884	500		300	4694			4694		563	4131		
<i>✓</i>					25	30	81		152	22	3433				3433			3433		412	3025		
<i>Shidner Frederick</i>	3483 4998	450 350	<i>L. Sullivant</i> <i>P. Mansfield</i>	<i>Darbycreek</i> <i>✓</i>	24	22	38	1/2	84 1/2	25	2112	500		200	2812			2812		337	2475		
<i>✓</i>					19	4			25 1/2	25	625				625			625		75	560		
<i>Shidner George G</i>	3687	548	<i>John Scott</i>	<i>Darbycreek</i>	8	35	20		63	23	1449				1449			1449		174	1275		
<i>Smith John W</i>	7916	800	<i>John W. Graham</i>	<i>Darbycreek</i>	15	203	50		268	29	7772	250		200	8222			8222		987	7235		
<i>Smith E. G. Jr</i>	7757 7774	447	<i>John W. Graham</i>	<i>Darbycreek</i>			7	1/2	7 1/2	29	227				227			227		27	200		
<i>✓</i>	10810	75	<i>W. Durr</i>	<i>✓</i>	17	41	20	1/2	78 1/2	29	2276	600		200	3076			3076		369	2707		
<i>✓</i>	7383	71	<i>J. Graham</i>	<i>✓</i>	18	45	30	1/2	93 1/2	29	2711				2711			2711		325	2386		
<i>✓</i>	3163	447	<i>L. Sullivant</i>	<i>✓</i>		56	11		67	29	1943				1943			1943		233	1710		
<i>✓</i>	8588		<i>W. Durr</i>	<i>✓</i>			4	1/4	4 1/4	29	123				123			123		15	108		
<i>Smith E. D</i>	3162 7757 7774	447	<i>L. Sullivant</i> <i>John W. Graham</i>	<i>Darbycreek</i> <i>✓</i>	20	30	27		77	29	2283	250		150	3213			3213		386	2827		
<i>✓</i>					30	68	38	1/2	135 1/2	29	3958	250 X			4208 X			4208		505	3703 X		
<i>Stevens George</i>	8528 8767	80 180	<i>W. Durr</i>	<i>Darbycreek</i> <i>✓</i>			72		72	29	2088				2088			2088		250	1838		
<i>✓</i>	12877 12240	258	<i>Schooley and Durr</i>	<i>✓</i>	90	200	47		337	29	9773	800		400	10973			10973		1317	9656		
<i>✓</i>	8183	340	<i>L. Sullivant</i>	<i>✓</i>			44	3/4	44 3/4	29	1298				1298			1298		156	1142		
<i>✓</i>	5711	80	<i>✓</i>	<i>✓</i>			45	3/4	45 3/4	29	1327				1327			1327		159	1168		
<i>✓</i>	12269	141	<i>W. Durr</i>	<i>✓</i>			41	2	43	29	1247				1247			1247		158	1097		
<i>✓</i>	10793	500	<i>D. C. Chapman</i>	<i>✓</i>			30	18	48	29	1392	250			1642			1642		197	1445		
<i>✓</i>	7259	40	<i>Gross Springs</i>	<i>✓</i>			3	8	6	29	174				174			174		21	153		
					509	1244	858	1/2	2611 1/4		6798	6950		3450	77398			77398		9288	6810		

Assessment of Real Property in *Darby* Township,

Union County, Ohio, for the Year 1870.

For Plats of all Lands described on this Page, see Page _____ of Plats.	No. of Entry.	Orig'l Quantity.	DESCRIPTION OF PROPERTY.	WATER COURSE.	No. of Acres of Land Classified.						Whole No. of Acres.	Value per Acre excluding Buildings.	Total Value of Lands, excluding Buildings.	Value of all Buildings.			Total Value of Lands and Buildings.	Amount Added or Deducted by Co. Board of Equalization.		Total Value as Equalized by Co. Board.	Amount Added or Deducted by State Board of Equalization.		Total Value as Equalized by State Board.	REMARKS.
					Arable & Plow Land.		Meadow & Pasture Land.		Uncultiv'd & Wood Land.					Houses.	Mills.	Other Buildings.		Added Dollars.	Deducted Dollars.		Added Dollars.	Deducted Dollars.		
					Acres.	H.	Acres.	H.	Acres.	H.				Dollars.	Dollars.	Dollars.		Dollars.	Dollars.		Dollars.	Dollars.		
<i>Shots house</i>	4903	100	<i>W Petty</i>	<i>Darby creek</i>						$7/4$	20	15				15			2	13				
<i>Steinhof John A</i>	3483	450	<i>R Stephens</i>	<i>Darby creek</i>						4	20	80				80			10	70				
<i>✓ ✓</i>	2877	1000	<i>L Sullivan</i>	<i>✓ ✓</i>	91					23	20	895				895			107	788				
<i>Strang Ludwig</i>	4998	350	<i>P Mangole</i>	<i>Darby creek</i>	10		25			6	41	20	820				820			98	722			
<i>Smith James B</i>	12200	130	<i>W Lucas</i>	<i>Darby creek</i>						63	29	1841				1841			221	1620				
<i>✓ ✓</i>	8350		<i>J. Graham</i>	<i>✓ ✓</i>	10		28				38	29	1102				1102			132	970			
<i>✓ ✓</i>			<i>Dur Lucas</i>	<i>✓ ✓</i>	25		85				110	29	3190	800	200		4190			503	3687			
<i>Schwartkopf Jacob</i>	4067	1120	<i>O Rickman</i>	<i>Darby creek</i>	16		28			16	60	20	1210		150		1360			163	1197			
<i>✓ ✓</i>	3204	657	<i>H Modern</i>	<i>✓ ✓</i>	6		5			$7/4$	11	20	335				335			40	295			
<i>✓ ✓</i>	15310	80	<i>J. Galloway</i>	<i>✓ ✓</i>			5				5	20	100				100			12	88			
<i>Steinhof Andrew</i>	1727 1763	654	<i>L Sullivan</i>	<i>Darby creek</i>	40		25			17	82	20	1600	800	100		2500			300	2200			
<i>Shawalter A.R</i>	3311 3312	350	<i>L Sullivan</i>	<i>Darby creek</i>	14		$7/4$				14	28	419				419			50	363			
<i>Savage R. G</i>	5724	400	<i>J. Galloway</i>	<i>Darby creek</i>			8			$7/4$	8	30	269				269			32	230			
<i>Snyder J. H</i>	5005	200	<i>R Smith</i>	<i>Darby creek</i>																				
<i>Snodgrass Alexander</i>	5742	400	<i>J Galloway</i>	<i>Darby creek</i>						1	1	40	40	300				340			41	299		
<i>Shirk Jessie</i>	2877	1000	<i>L Sullivan</i>	<i>Darby creek</i>	5		4			$1/2$	9	15	149				149			17	126			
					147		277			69	494		12045	1900	450	14395	14395		1729	12667				

Assessment of Real Property in *Darby* Township,

Union County, Ohio, for the Year 1870.

For Plats of all Lands described on this Page, see Page _____ of Plats.		DESCRIPTION OF PROPERTY.				No. of Acres of Land Classified.						Whole No. of Acres.	Value per Acre of Land and Buildings.	Value of all Buildings.			Total Value of Lands and Buildings.	Amount Added or Deducted by Co. Board of Equalization.		Total Value as Equalized by Co. Board.	Amount Added or Deducted by State Board of Equalization.		Total Value as Equalized by State Board.	REMARKS.		
						Arable & Plow Land.	Meadow & Pasture Land.	Uncultiv'd & Wood Land.	Acres.	H.	Acres.			H.	Acres.	H.		Houses.	Mills.		Other Buildings.	Added Dollars.			Deducted Dollars.	Added Dollars.
In whose name assessed.	No. of Entry.	Orig'l Quantity.	ORIGINAL PROPRIETOR.	WATER COURSE.	Acres.	H.	Acres.	H.	Acres.	H.	Acres.	H.	Dollars.	Dollars.	Dollars.	Dollars.	Dollars.	Dollars.	Dollars.	Dollars.	Dollars.	Dollars.	Dollars.	Dollars.	Dollars.	Dollars.
<i>Furkham Benj</i>	<i>4602</i> <i>7916</i>	<i>200</i> <i>1450</i>	<i>Jullway</i>	<i>Darbycreek</i>	<i>20</i>		<i>68</i>		<i>70</i>				<i>152</i>		<i>29</i>	<i>4582</i>	<i>300</i>		<i>200</i>	<i>5082</i>			<i>5082</i>	<i>410</i>	<i>4472</i>	
<i>Vauderan John</i>	<i>4998</i>	<i>350</i>	<i>P. Mansfield</i>	<i>Darbycreek</i>	<i>15</i>		<i>6</i>						<i>21</i>		<i>20</i>	<i>420</i>			<i>420</i>			<i>420</i>	<i>50</i>	<i>370</i>		
<i>Wright William</i>	<i>2675-1000</i>		<i>L. Sullivan</i>	<i>Darbycreek</i>	<i>97</i>	<i>1/4</i>	<i>68</i>		<i>44</i>				<i>149</i>		<i>28</i>	<i>4172</i>	<i>600</i>		<i>250</i>	<i>5022</i>			<i>5022</i>	<i>603</i>	<i>4419</i>	
<i>Wolf, Joseph M</i>	<i>1709</i> <i>4998</i>	<i>265-</i> <i>350</i>	<i>H. Woodson</i> <i>P. Mansfield</i>	<i>Darbycreek</i> <i>" "</i>	<i>12</i> <i>33</i>		<i>30</i> <i>17</i>		<i>64</i> <i>73</i>				<i>106</i> <i>117</i>		<i>25</i> <i>20</i>	<i>2650</i> <i>2340</i>	<i>900</i>		<i>200</i>	<i>3750</i> <i>2340</i>			<i>3750</i> <i>2340</i>	<i>450</i> <i>281</i>	<i>3300</i> <i>2059</i>	
<i>Wolford Adam</i>	<i>3482</i> <i>3682</i>	<i>568</i> <i>310</i>	<i>R. Stephenson</i> <i>R. Powers</i>	<i>Darbycreek</i> <i>" "</i>	<i>42</i>		<i>35</i>		<i>53</i>				<i>150</i> <i>10</i>		<i>23</i> <i>23</i>	<i>3450</i> <i>230</i>	<i>300</i>		<i>3750</i> <i>230</i>			<i>3750</i> <i>230</i>	<i>450</i> <i>26</i>	<i>3300</i> <i>204</i>		
<i>Williams John R</i>	<i>5139</i>	<i>1000</i>	<i>R. Stephens</i>	<i>Darbycreek</i>	<i>18</i>		<i>8</i>		<i>25</i>	<i>1/4</i>			<i>51 1/4</i>		<i>20</i>	<i>1025</i>			<i>1025</i>			<i>1025</i>	<i>123</i>	<i>902</i>		
<i>Woods Saml</i> <i>Meyer William</i>	<i>2675-1000</i> <i>" "</i>	<i>1000</i> <i>" "</i>	<i>L. Sullivan</i> <i>" "</i>	<i>Darbycreek</i> <i>" "</i>			<i>27</i> <i>6</i>		<i>14</i> <i>14</i>	<i>1/2</i> <i>1/2</i>			<i>41 1/2</i> <i>41 1/2</i>		<i>24</i> <i>24</i>	<i>996</i> <i>996</i>			<i>996</i> <i>996</i>			<i>996</i> <i>996</i>	<i>120</i> <i>120</i>	<i>876</i> <i>876</i>		
					<i>198</i>		<i>279</i>		<i>368 1/4</i>				<i>845 1/4</i>			<i>20561</i>	<i>2100</i>		<i>650</i>	<i>23611</i>			<i>23611</i>	<i>2838</i>	<i>20778</i>	

For Plats of all Lands described on this Page, see Page _____ of Plats.				DESCRIPTION OF PROPERTY.						No. of Acres of Land Classified.			Whole No. of Acres.	Value per Acre of Land.	Total Value of Lands, excluding Buildings.	Value of all Buildings.			Total Value of Lands and Buildings.	Amount Added or Deducted by Co. Board of Equalization.		Total Value as Equalized by Co. Board.	Amount Added or Deducted by State Board of Equalization.		Total Value as Equalized by State Board.	REMARKS.	
										Arable & Plow Land.	Meadow & Pasture Land.	Uncultiv'd & Wood Land.				Houses.	Mills.	Other Buildings.		Added Dollars.	Deducted Dollars.		Added Dollars.	Deducted Dollars.			
In Whose Name Assessed.	No. of Entry.	Orig'l Quantity.	ORIGINAL PROPRIETOR.	WATER COURSE.	Acres.	H.	Acres.	H.	Acres.	H.	Acres.	H.	Dollars.	Dollars.	Dollars.	Dollars.	Dollars.	Dollars.	Dollars.	Dollars.	Dollars.	Dollars.	Dollars.	Dollars.	Dollars.		
District Sat School	1						1/4						20	600			620										
	2						1/4							800			820										
	3						1/4							600			620										
	4						1/4							800			820										
	5						1/4							150			170										
	6						1/4							200			220										
	7						1/4							100			120										
	8						1/4							500			520										
	9						1/4							200			220										
District Sat School	10						1/4							800			820										
							3 1/2							200	4750		4950										
Churches =							1/4						10	50	20	300	3020										
Lut in Minerva Methodist							1/4						27		21	9000	7020										
Lut in Minerva Secular Lots															25	300	325										
														50	500	550											
Grave yards																											
	1st Page				388		608		598	3/4	1594	3/4	35435	2500	1100	39035	39035	4684	34387								
	2 ^d				408	3/4	772	1/4	630	1/4	1811	1/4	42579	5750	1550	49279	49279	5912	43365								
	3				246	3/4	388		433		1057	3/4	26393	2150	950	29493	29493	3539	25954								
	4				463		744	1/2	496		1703	1/2	37153	4300	1600	45053	45053	5406	39647	10000	Land	Redup	27	46			
	5				368	1/2	575	3/4	416	3/4	1361		32662	2500	600	1000	37062	37062	4448	32612					24.00		
	6				438	1/2	473	1/4	620	3/4	1592	1/2	38850	4100	1350	44300	44300	5316	38987								
	7				676	3/4	833	3/4	812		2322	1/2	56278	7600	2250	66128	66128	7935	58193								
	8				191	3/4	183		381	1/2	756	1/4	15569	700	200	16469	16469	1976	14493								
	9				539		745	1/2	760	1/2	2045		48495	6000	2800	57045	57045	6845	50200								
	10				381	1/2	687	3/4	253	3/4	1323		32178	3450	800	36478	36478	4377	32101								
	11				509		1244		858	1/4	2611	1/4	67798	6950	2450	77328	77328	9289	68110								
	12				147	3/4	277	1/2	69		114	1/4	12045	1900	450	14395	14395	1728	12667								
	13				198		279		368	1/4	945	1/4	20821	3100	650	23611	23611	2833	20728								
					435	1/4	780	1/4	678	3/4	17520	1/4	469,496	49700	600	16700	530746	530746	64289	471,445							

Assessment of Real Property in Township, Union County, Ohio, for the Year 1870.

Returned by the District Assessor

Table with multiple columns: No. of Acres of Land Classified (Arable & Plow Land, Meadow & Pasture Land, Uncultiv'd & Wood Land), Value of all Buildings (Houses, Mills, Other Buildings), Total Value of Lands, etc. Includes a list of townships on the left side.

Changes by the County Board. York Tp raised 10 of Darby Tp changed from millings to

Summary calculations and handwritten notes: 272200, 6,427,436, 757,159, 7,184,591, 3875, 60275, 4982, 69125, 7800, 3800, 1605, 151252. Which changes the Total Payable Valuation from \$1,845,591 to \$7,332,907. Changes the Average per Acre of Land from \$33.60 to \$33.81 2/3.

Assessment of Lots in the Town of Miami

Union County, Ohio, for the Year 1870.

For Plats of all Lots described on this Page, see Page _____ of Plats.	DESCRIPTION OF PROPERTY.	Value of Lots.		Value of all Buildings.			Total Value of Lots and Buildings.	Amount Added or Deducted by Co. Board of Equalization.		Total Value as Equalized by Co. Board.	Amount Added or Deducted by State Board of Equalization.		Total Value as Equalized by State Board.	REMARKS.			
		Dollars.	Cents.	Houses.	Mills.	Other Buildings.		Dollars.	Cents.		Dollars.	Cents.					
															Added Dollars.	Deducted Dollars.	Added Dollars.
In Whose Name Assessed.	ADDITION.	No. of In-Lot.	No. of Out-Lot.	WHAT PART OF LOT.	No. Feet Front.	No. Feet Depth.	Dollars.	Dollars.	Dollars.	Dollars.	Added Dollars.	Deducted Dollars.	Dollars.	Added Dollars.	Deducted Dollars.	Dollars.	
Andrews Laura		58		all	66	198	30			130			130	16		114	
Brown Harrett		42		all	66	198	35			35			35	4		31	
✓		44		✓	66	198	35			35			35	4		31	
Brown Adam		20		✓	75	198	40			40			40	5		35	
✓		21		✓	75	198	40			40			40	5		35	
Brown Harrett		38		✓	66	198	35	150		185			185	22		163	
✓		40		✓	66	198	35			35			35	4		31	
Wanamaker Lathrop		10		N/4	6	198	10			10			10	1		9	All to Secy. A. Doelker
Wanamaker W. D.		13		all	75	198	40			40			40	5		35	
✓		14		✓	75	198	40	250		240			240	29		211	
✓		10		✓	66	198	30			30			30	4		26	
✓		51		✓	66	198	30			30			30	4		26	
✓		52		✓	66	198	30			30			30	4		26	
Cooklin James E.		34		✓	66	198	35	100		135			135	16		120	
Cooklin Catherine E.		36		✓	66	198	35			35			35	4		31	
Dunlap John		2		Part	12	30	15			15			15	3		13	
Doekner A.		12		all	70	198	30	150		200			200	24		176	
Wanamaker W. D.		30		all													
Holyers James		35		all	66	198	35	100		135			135	16		119	
✓		37		✓	66	198	35			35			35	4		31	
Holyers David		17		✓	75	198	50	500		430			500	60		484	
✓		19		✓	75	198	50			50			50	6		44	
✓		47		✓	66	198	35			35			35	4		31	
✓		39		✓	66	198	35			35			35	4		31	
✓		45		✓	66	198	35			35			35	4		31	
✓		43		✓	66	198	35			35			35	4		31	
Holyers John		59		✓	66	198	20			20			20	2		18	
✓		60		✓	66	198	20			20			20	2		18	
Harper William		8		✓	75	198	30	100		150			150	18		132	
✓		26		✓	66	198	35			35			35	4		31	
✓		28		✓	66	198	35			35			35	4		31	
✓		49		✓	66	198	35			35			35	4		31	
Harris W. J.		9		Part	75	198	50	200		250			250	30		220	
✓		7		all	20	40	15			15			15	2		13	
✓		5		all	22	32	20	450		470			470	56		414	
Holyers Mary		10		Part	30	198	25	300		325			325	39		286	
Wattles J. P.		7		S. E. Corn	35	198	40	100		140			140	17		123	
Lynas Patrick		31		all	66	198	35	200		235			235	38		204	All to Maria Steiner
✓		33		✓	66	198	35			35			35	4		31	
							1290	2650		3940			3940	473		3467	

Assessment of Lots in the Town of Unionville

Union County, Ohio, for the Year 1870.

For Plats of all Lots described on this Page, see Page _____ of Plats.	DESCRIPTION OF PROPERTY.						Value of Lots. Dollars.	Value of all Buildings.			Total Value of Lots and Buildings. Dollars.	Amount Added or Deducted by Co. Board of Equalization.		Total Value as Equalized by Co. Board. Dollars.	Amount Added or Deducted by State Board of Equalization.		Total Value as Equalized by State Board. Dollars.	REMARKS.				
	IN WHOSE NAME ASSESSED.	ADDITION.	No. of In-Lot.	No. of Out-Lot.	WHAT PART OF LOT.	No. Feet Front.		No. Feet Depth.	Houses.	Mills.		Other Buildings.	Added Dollars.		Deducted Dollars.	Added Dollars.			Deducted Dollars.			
																				Dollars.	Dollars.	Dollars.
Mitchell George		23		all	66	198	35															
"		25		"	66	198	35	100														
Mitchell David		62		"	66	198	35	100														
Marshall H H		10		East	30	198	25															
Waddox Philip		46		all	66	198	35	100		100												
McClintock J		55		"	66	198	35															
"		30		"	66	198	35	200														
"		32		"	66	198	35															
Miller William		2		East	63	198	70	200														
Parkinson Erasmus		3		all	26	60	20															
"		18		"	75	198	45															
Purser Benj		15		"	75	198	50	150		100												
Petrick Eliza J		63		"	66	198	35															
"		64		"	66	198	35															
Rice Harrett		48		all	66	198	35	100		100												
"		47		"	66	198	35															
Rice M P		1		"	75	198	75	600														
Ridgway David		61		"	66	198	35															
"		32		"	66	198	35															
"		24		"	66	198	35															
Shawalter Joseph		16		all	75	198	50	300														
Savage Reuben J		57		"	66	198	35	300														
"		53		"	66	198	35															
Snodgrass Maraudia		27		"	60	198	35	100														
"		29		"	60	198	20															
Snodgrass Melia D		3		"	50	198	60	300														
State of Ohio		5		S.W. Part	59	198	60	200		125												
Lawrence Lawrence		4		all	75	198	60	100														
Walker George		6		all	75	198	60	200														
Zimmerman Frank		11		all	75	198	50	300														
							1291	2615		3945												
							1240	3950		425	5015		4953	601	4354							
							2530	6000		425	8943											

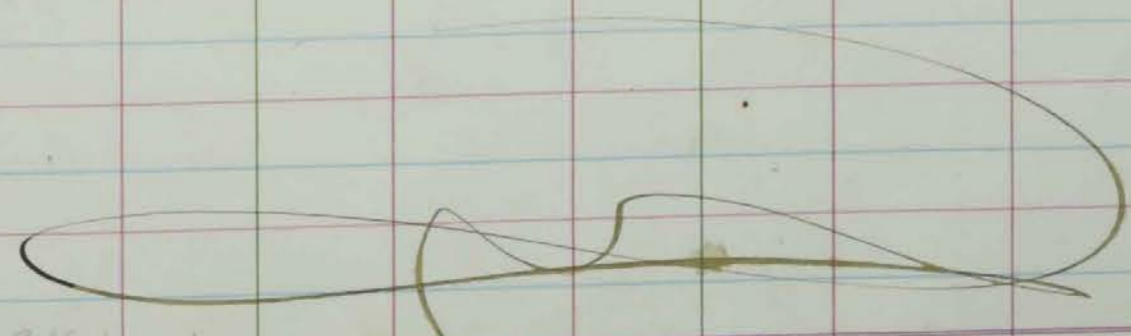
All to John Marshall

All to W. B. Sumner

All to Mike Yealey

All to D. A. Ridgway

3467
4354
7821



**DARBY TP.
UNION COUNTY
1870**