

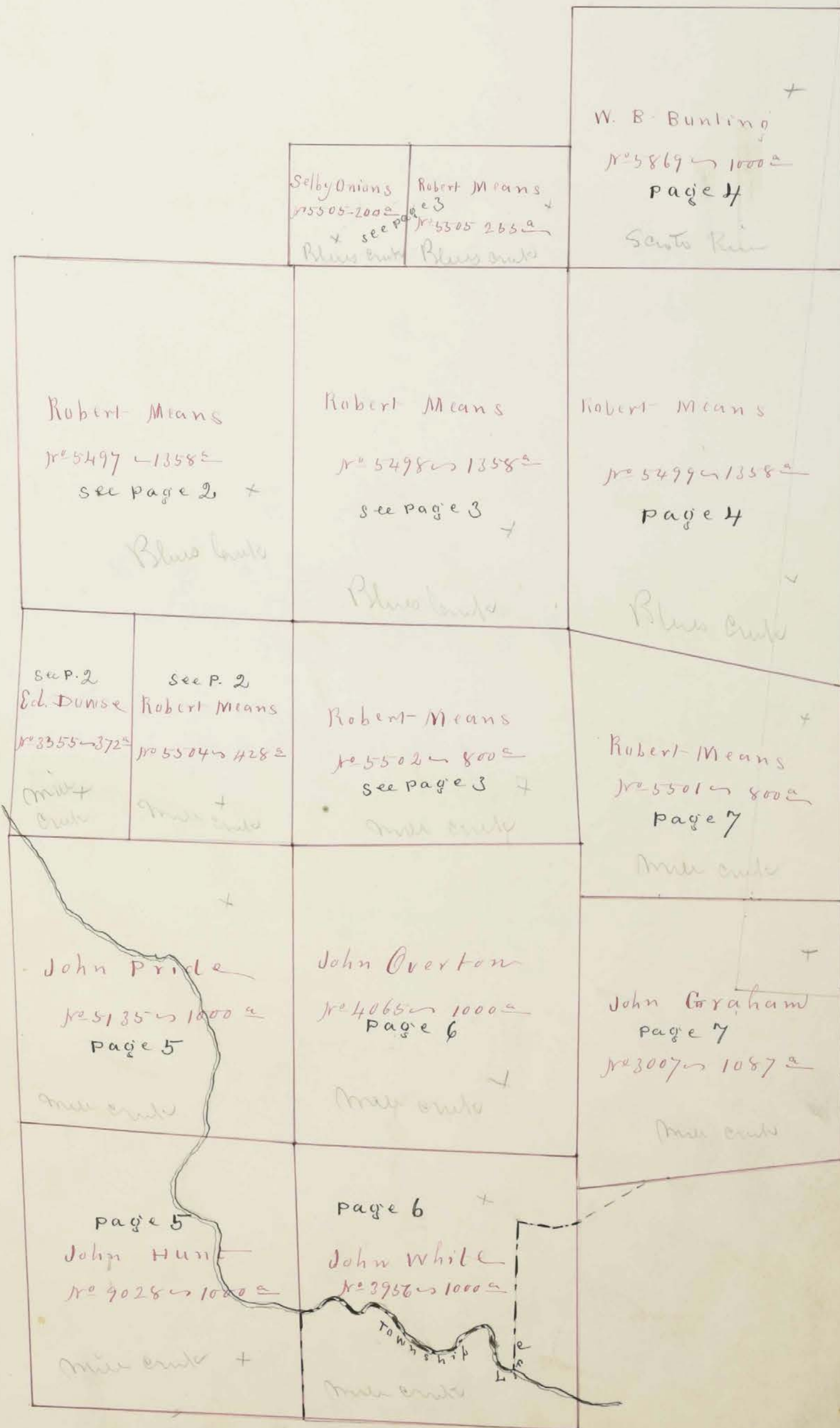
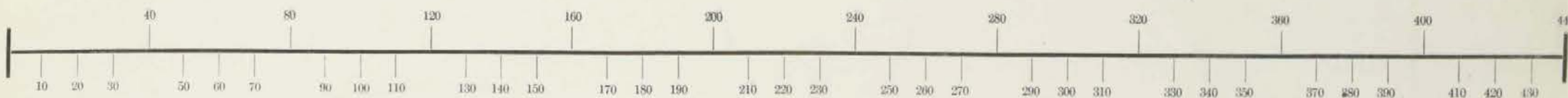
DOVER TP.
UNION COUNTY
1870.

Section, No.

Lot

Scale, 40 Rods to an Inch, or 10 Rods to 1-4 Inch.

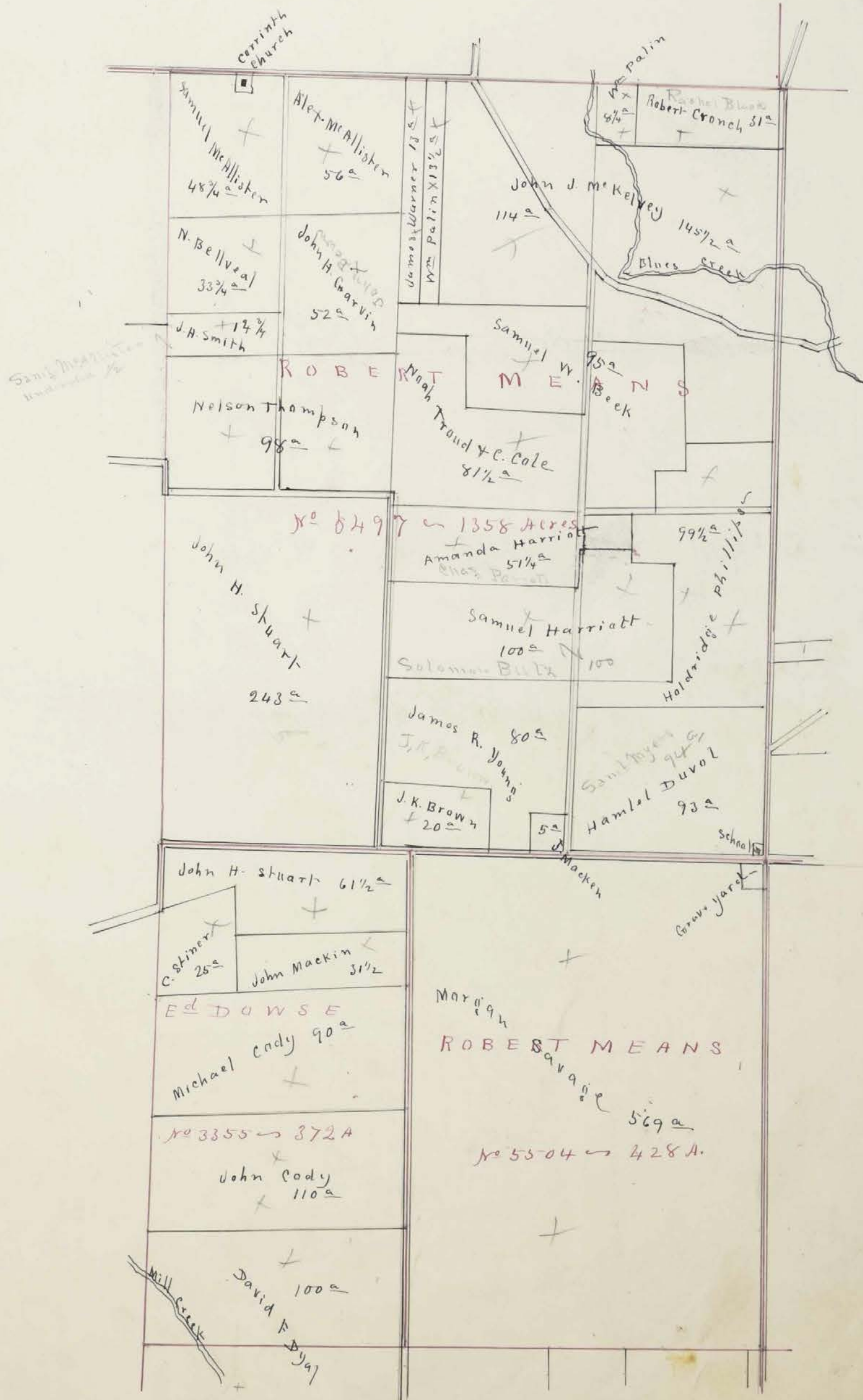
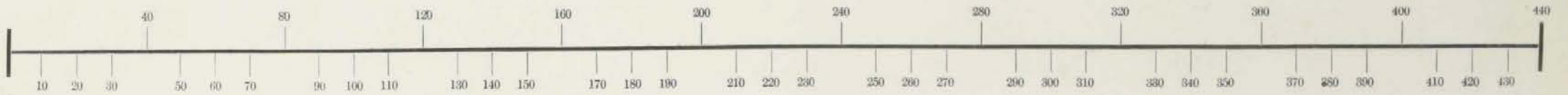
Lower



Section, No.

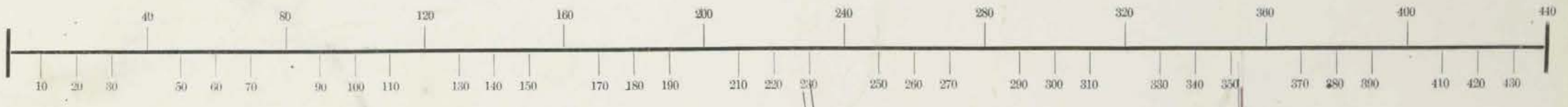
Lot

Scale, ⁴⁰ Rods to an Inch, or ²⁰ Rods to 1-4 Inch.

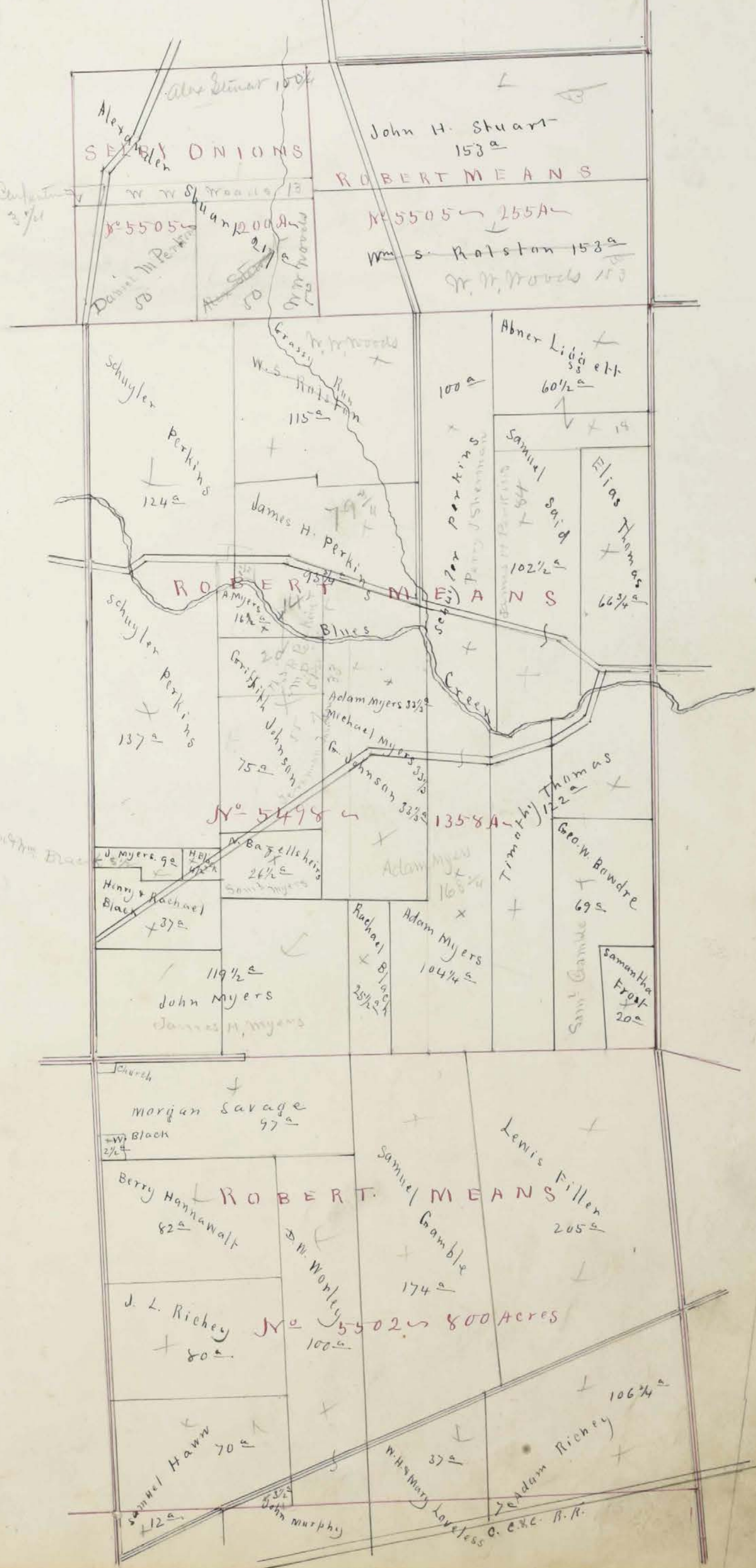


Section, No. Lot

Scale, ⁸⁰40 Rods to an Inch, or ²⁰10 Rods to 1-4 Inch.



Handwritten notes on the left side of the map, including a calculation: $\frac{103 \frac{1}{4}}{1 \frac{1}{2}} = 68 \frac{1}{2}$.



Handwritten note: 'August 1848'

Handwritten note: '20'

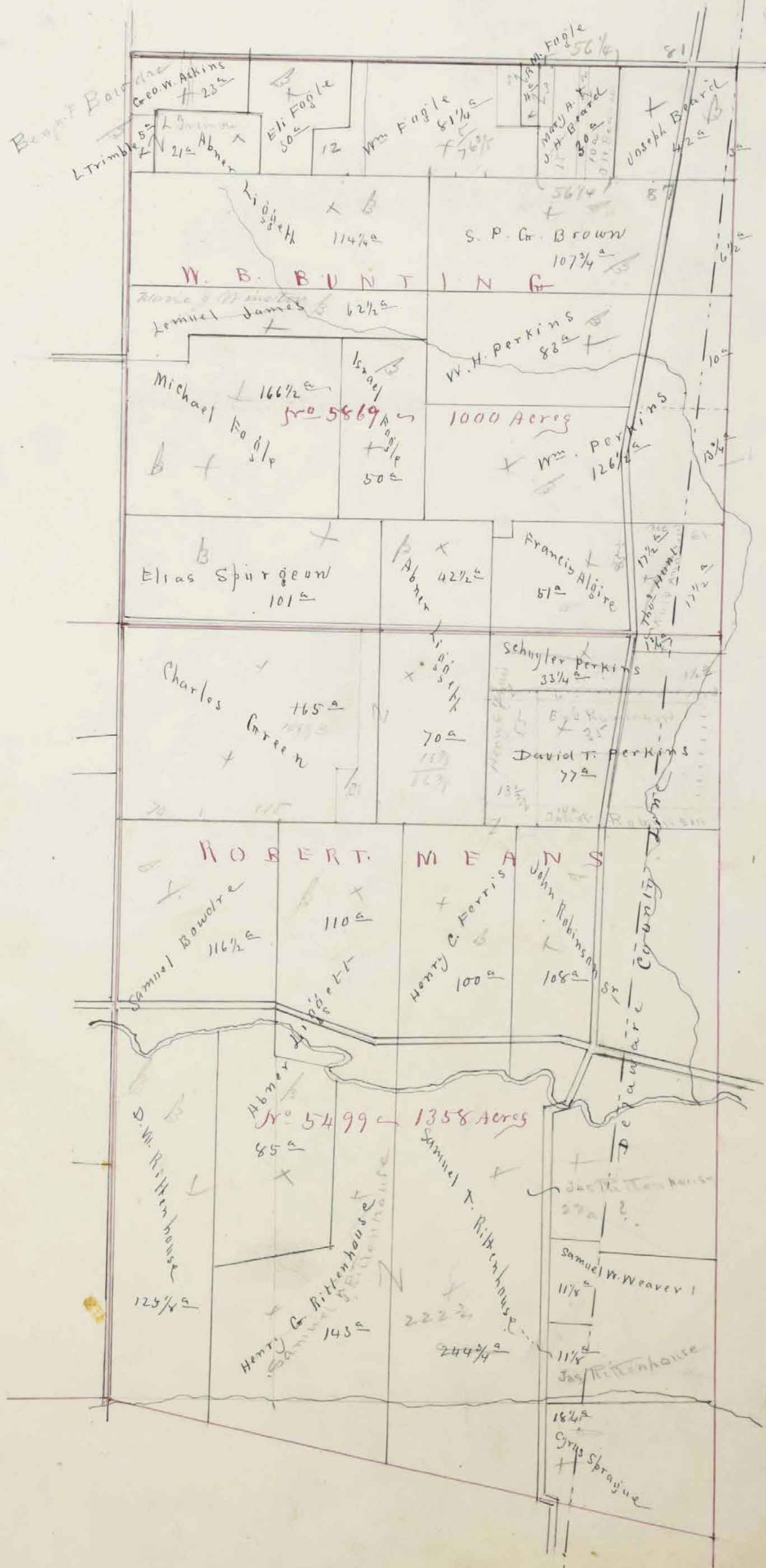
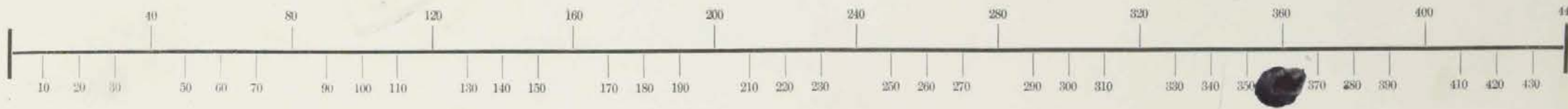
Handwritten note: '800 ACRES' in red ink.

Handwritten note: 'A. C. C. B. R.'

220 3/4
143
361 1/4

Section, No. Lot

Scale, ⁸⁰40 Rods to an Inch, or ²⁰10 Rods to 1-4 Inch.



165
148
13

77 1/2
62 1/2
85 1/2
17 1/2

10/15/17

10/15/17

10/15/17

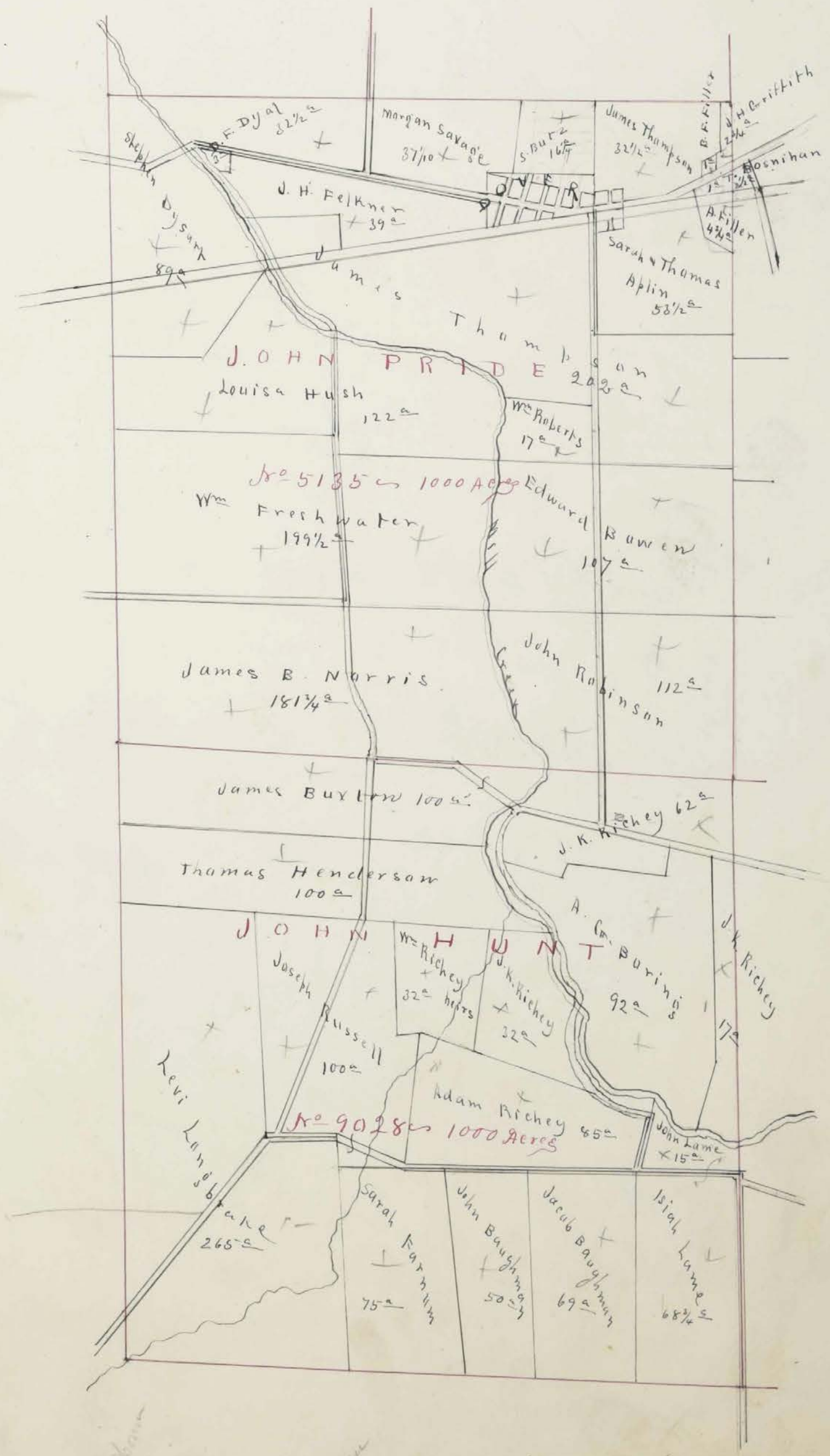
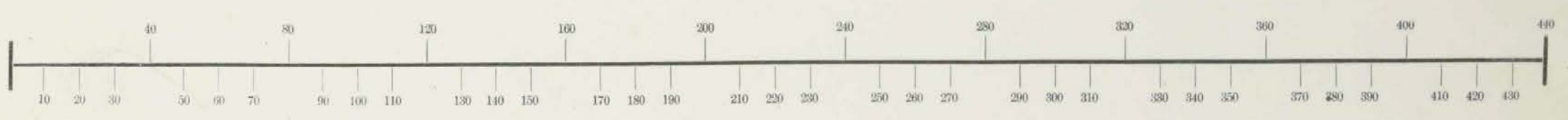
10/15/17

10/15/17

10/15/17

Section, No. Lot

Scale, ⁸⁰40 Rods to an Inch, or ²⁰10 Rods to 1-4 Inch.



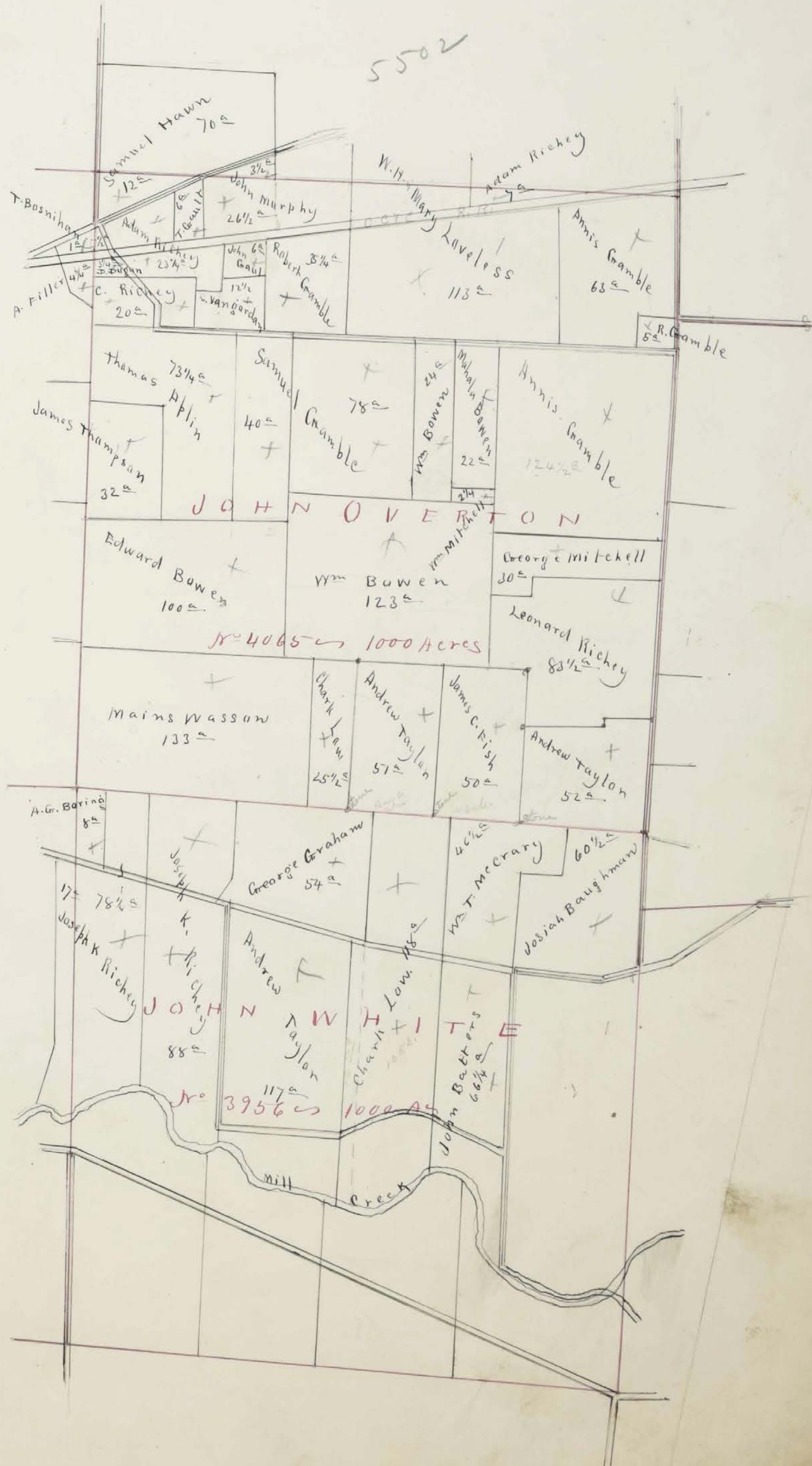
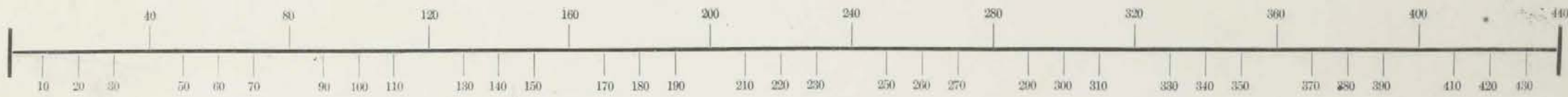
Handwritten notes at the bottom of the page, including 'No 11', '218', 'Sant Pannu', 'K. 125', and 'Sant Pannu'.

Section, No. _____ Lot _____

2 1/2
3 1/2
30

Scale, ⁵⁰ 40 Rods to an Inch, or ²⁰ 10 Rods to 1-4 Inch.

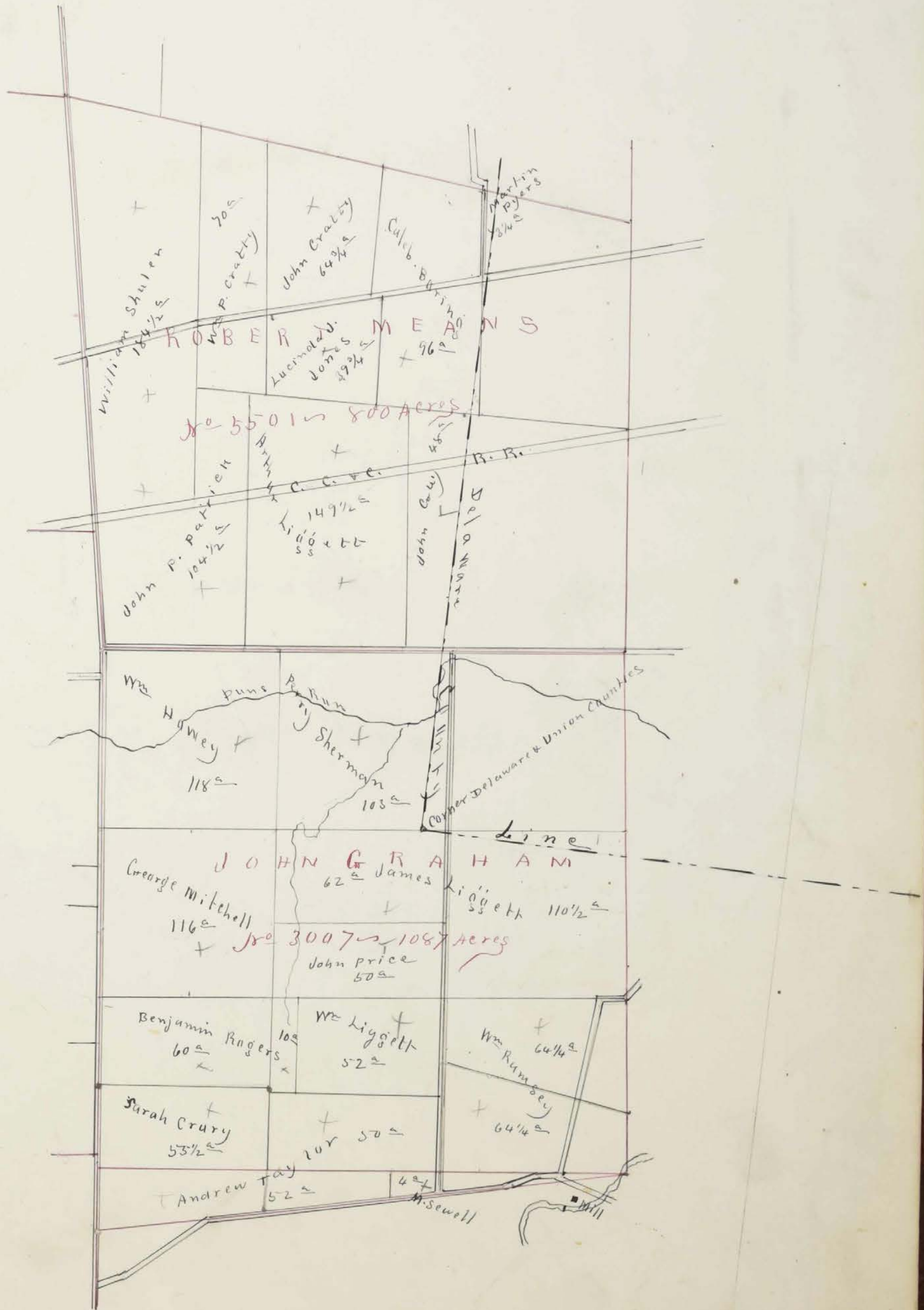
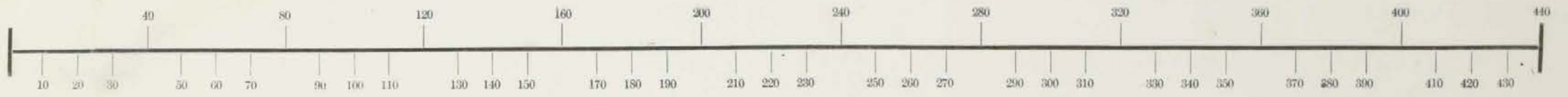
18 1/2



102.82
69.70
69.70
238.60

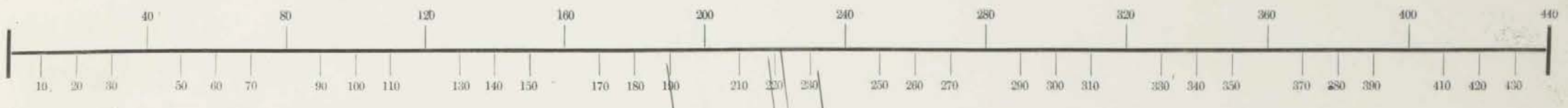
Section, No. _____ Lot _____

Scale, ⁸⁰ 40 Rods to an Inch, or ²⁰ 10 Rods to 1-4 Inch.



Section, No. Lot

Scale, 40 Rods to an Inch, or 10 Rods to 1-4 Inch.



Assessment of Real Property in *Dover* Township,

Union County, Ohio, for the Year 1870.

For Plats of all Lands described on this Page, see Page 52 of Plats.	DESCRIPTION OF PROPERTY.				No. of Acres of Land Classified.						Whole No. of Acres.	Value per Acre of Land.	Total Value of Lands, excluding Buildings.	Value of all Buildings.			Total Value of Lands and Buildings.	Amount Added or Deducted by Co. Board of Equalization.		Total Value as Equalized by Co. Board.	Amount Added or Deducted by State Board of Equalization.		Total Value as Equalized by State Board.	REMARKS.		
					Arable & Plow Land.		Meadow & Pasture Land.		Uncultiv'd & Wood Land.					Houses.	Mills.	Other Buildings.		Added Dollars.	Deducted Dollars.		Dollars.	Added Dollars.			Deducted Dollars.	Dollars.
					Acres.	H.	Acres.	H.	Acres.	H.				Dollars.	Dollars.	Dollars.										
<i>Aplin Thomas</i>	5135	1000	<i>John Prids</i>	<i>Millerick</i>	15	8	10	1/2	33 1/2	24	804		100	904	904	109	795									
	4065		<i>John Coerten</i>		12	13	48	3/4	73 3/4	19	1391			1391	1391	167	1224									
<i>Aplin Sarah</i>	5135	1000	<i>John Prids</i>	<i>Millerick</i>	5		12		20	21	420			420	420	50	370									
<i>Algie Francis</i>	5869	1000	<i>W.B. Bunting</i>	<i>Bluescreek</i>	10	10	31		51	17	867	125		992	992	119	873									
<i>Askins George W</i>	5869	1000	<i>W.B. Bunting</i>	<i>Bluescreek</i>	5		18		23	12	276			276	276	33	243									
<i>Batters John</i>	3956	1000	<i>John White</i>	<i>Millerick</i>	31	5	50	3/4	66 3/4	23	1523	500	300	2323	2323	279	2044									
<i>Bick Samuel W</i>	5497	1358	<i>R. Means</i>	<i>Bluescreek</i>	50	25	20		95	20	1900			1900	1900	228	1672									
<i>Brown J N</i>	5497	1358	<i>R. Means</i>	<i>Bluescreek</i>	12	8			20	21	420	500		920	920	110	810									
<i>Bowen William</i>	4065	1000	<i>John Coerten</i>	<i>Millerick</i>	40	15	89		147	21	3049		250	3337	3337	400	2937									
<i>Burton James</i>	9028	1000	<i>John Hunt</i>	<i>Bluescreek</i>	35	40	25		100	24	2400			2400	2400	288	2112									
<i>Bowen Edward</i>	5135	1358	<i>John Prids</i>	<i>Bluescreek</i>	40	67			107	23	2461	700	300	3461	3461	415	3046									
	4065		<i>John Coerten</i>			15	85		100	21	2100			2100	2100	252	1848									
<i>Bowdre George W</i>	5498	1358	<i>John Prids</i>	<i>Bluescreek</i>	34	15	20		69	20	1840		250	1630	1630	196	1434									
<i>Boring Alvin J</i>	3956	1358	<i>John White</i>	<i>Millerick</i>	4		4		8	23	184			184	184	22	162									
	9028		<i>John Hunt</i>	<i>Bluescreek</i>	25	67			92	27	2444	700	200	3384	3384	408	2976									
<i>Bowdre Samuel</i>	5499	1358	<i>R. Means</i>	<i>Bluescreek</i>	30	70	16	1/2	116 1/2	31	2446			2446	2446	294	2152									
<i>Boughman John</i>	9028	1358	<i>John Hunt</i>	<i>Bluescreek</i>	20	10	20		50	24	1200			1200	1200	144	1056									
<i>Boughman Jacob</i>	9028	1358	<i>John Hunt</i>	<i>Bluescreek</i>	20	25	24		69	24	1656	400		2056	2056	247	1809									
<i>Boughman Josiah</i>	3956	1000	<i>John White</i>	<i>Millerick</i>	20	20	20	1/2	60 1/2	23	1391	300		1691	1691	203	1488									
<i>Black Rachel</i>	5498	1358	<i>R. Means</i>	<i>Bluescreek</i>	35	10	12	1/2	57 1/2	21	1207			1207	1207	145	1062									
<i>Black Henry</i>					8				8 3/4	21	183			183	183	22	161									
<i>Bazell's heirs W</i>	5498	1358	"	"		24	1/2		26 1/2	22	583			583	583	70	513									
									1368 3/4																	
					454				452 1/2		187 1/4															
					1393 3/4				30363		8225		1400	34988	34988											
															34988		419930989									

Assessment of Real Property in *Dover* Township,

Union County, Ohio, for the Year 1870.

For Plats of all Lands described on this Page, see Page _____ of Plats.			DESCRIPTION OF PROPERTY.				No. of Acres of Land Classified.						Whole No. of Acres.	Value per Acre of Land, excluding Buildings.	Total Value of Lands, excluding Buildings.	Value of all Buildings.			Total Value of Lands and Buildings.	Amount Added or Deducted by Co. Board of Equalization.		Total Value as Equalized by Co. Board.	Amount Added or Deducted by State Board of Equalization.		Total Value as Equalized by State Board.	REMARKS.
							Arable & Plow Land.	Meadow & Pasture Land.	Uncultiv'd & Wood Land.	Houses.	Mills.	Other Buildings.				Added Dollars.	Deducted Dollars.	Added Dollars.		Deducted Dollars.						
In whose name assessed.	No. of Entry.	Orig'l Quantity.	ORIGINAL PROPRIETOR.	WATER COURSE.	Acres.	H.	Acres.	H.	Acres.	H.	Acres.	H.	Dollars.	Dollars.	Dollars.	Dollars.	Dollars.	Dollars.	Dollars.	Dollars.	Dollars.	Dollars.	Dollars.	Dollars.	Dollars.	Dollars.
Black William	5502	800	R Means	Milleruck	2								2 1/2	27	67	100			167			167		20	147	
Bowen Mahala	4065	1000	John Overton	Milleruck	12		10						33	22	704			704			704		84	620		
Brown S. P. G.	5869	1000	W. B. Bunting	Blusecuk	10		15		82	3/4			107 3/4	15	1616			1616			1616		194	1422		
Boring Galib	5571	1000	R Means	Milleruck	35		16		45				96	22	2112		200	2312			2312		271	2035		
Brosnahan Timothy	4065	1000	John Overton	Milleruck									1/2	28	14			14			14		2	12		
	5735		John Pride										1	28	28			28			28		3	20		
Belveal Nichols	5497	1358	R Means	Blusecuk	10		5		18	3/4			33 3/4	17	573			573			573		69	504		
Beard Joseph	5869	1000	W. B. Bunting	Blusecuk	10		10		22				42	13	546			546			546		66	480		
Bazell, Nicholas redman	5498	1358	R Means	Blusecuk	10				16	1/2			26 1/2	21	556			556			556		67	489		
Beard Mary A	5869	1000	W. B. Bunting	Blusecuk	5				15				20	12	240			240			240		29	211		
Beard Joseph W.					2				8				10	12	120			120			120		14	106		
Butz Solomon	5735	1000	John Pride	Milleruck	4				12	1/2			16 1/2	21	346			346			346		42	304		
													1/2													
Cody John	3355	372	Ed Dause	Milleruck	14		16		80				110	19	2090			2090			2090		237	1939		
Cody Michael	3355	372	Ed Dause	Milleruck	26		12		52				90	17	1530			1530			1530		184	1346		
Cratty John	5501	800	R Means	Milleruck	30		10		24	3/4			64 3/4	22	1534		150	1684			1684		202	1482		
Cratty W. P.	5501	800	R Means	Milleruck	25		10		35				70	22	1540			1540			1540		185	1355		
Cowry Sarah	3007	1087	John Overton	Milleruck	25		8		25	1/2			58 1/2	22	1287	300		1587			1587		190	1397		
Crouch Robert	5497	1358	R Means	Blusecuk	10		21						31	20	620			620			620		74	546		
Dugan Geo. C.	5735	1000	John Pride	Milleruck									1/2	80	5			5			5		0	5		
Duwall Hamlet	5497	1358	R. Means	Blusecuk	50		13		30				93	21	1953			1953			1953		234	1719		
Dzert Stephen his	5735	1000	John Pride	Milleruck	45		40		1				89	21	1869	150		2019			2019		242	1777		
Dyall David Jr	5735	1000	John Pride	Milleruck					27	8	1/2		35 1/2	24	852			852			852		102	750		
	3355	372	Ed Dause		35		45		20				100	24	2400	600	200	3200			3200		384	2816		
					3 1/4								3 1/4	23	74	1000		1074			1074		129	945		
Dugan Dennis	4065	1000	John Overton	Milleruck	5								3 1/4	25	81	150		231			231		28	203		
													1128 1/2													
					370		25 1/2		498	3/4			1126 1/2		22752	1200	1000	550	25602			25602		3072	22630	

Assessment of Real Property in *Dover* Township,

Union County, Ohio, for the Year 1870.

For Plats of all Lands described on this Page, see Page <u>6</u> of Plats.			DESCRIPTION OF PROPERTY.								No. of Acres of Land Classified.		Whole No. of Acres.	Value per Acre, including Buildings.	Total Value of Lands, excluding Buildings.	Value of all Buildings.			Total Value of Lands and Buildings.	Amount Added or Deducted by Co. Board of Equalization.		Total Value as Equalized by Co. Board.	Amount Added or Deducted by State Board of Equalization.		Total Value as Equalized by State Board.	REMARKS.
In Whose Name Assessed.	No. of Entry.	Orig'l Quantity.	ORIGINAL PROPRIETOR.	WATER COURSE.	Acres	H.	Acres	H.	Acres	H.	Houses.	Mills.				Other Buildings.	Added Dollars.	Deducted Dollars.		Added Dollars.	Deducted Dollars.		Dollars.			
<i>Gamble Annis</i>	<i>4065</i>	<i>800</i>	<i>John Overton</i>	<i>Milleruk</i>	<i>60</i>		<i>26</i>		<i>38</i>	<i>1/2</i>				<i>124 1/2</i>	<i>22</i>	<i>2739</i>	<i>300</i>		<i>3039</i>			<i>3039</i>	<i>364</i>	<i>2675</i>		
<i>Gault Thomas</i>	<i>4065</i>	<i>800</i>	<i>John Overton</i>	<i>Milleruk</i>	<i>15</i>		<i>33</i>		<i>15</i>					<i>63</i>	<i>22</i>	<i>1386</i>			<i>1386</i>			<i>1386</i>	<i>166</i>	<i>1220</i>		
<i>Gaul John</i>	<i>4065</i>	<i>800</i>	<i>John Overton</i>	<i>Milleruk</i>	<i>5</i>		<i>1</i>							<i>6</i>	<i>22</i>	<i>132</i>			<i>132</i>			<i>132</i>	<i>16</i>	<i>116</i>		
<i>Kavanaugh Thomas</i>	<i>9028</i>	<i>1000</i>	<i>John Hunt</i>	<i>Milleruk</i>	<i>25</i>		<i>45</i>		<i>30</i>					<i>100</i>	<i>25</i>	<i>2500</i>	<i>500</i>		<i>3000</i>			<i>3000</i>	<i>360</i>	<i>2640</i>		
<i>Howey William</i>	<i>3007</i>	<i>1087</i>	<i>John Graham</i>	<i>Milleruk</i>	<i>40</i>		<i>20</i>		<i>58</i>					<i>118</i>	<i>22</i>	<i>2596</i>	<i>100</i>		<i>2696</i>			<i>2696</i>	<i>324</i>	<i>2372</i>		
<i>Hunt Thomas</i>	<i>5499</i>	<i>1358</i>	<i>R Meaus</i>	<i>Blusseruk</i>	<i>1</i>					<i>3/4</i>				<i>1 3/4</i>	<i>20</i>	<i>35</i>	<i>500</i>		<i>535</i>			<i>535</i>	<i>64</i>	<i>471</i>		
	<i>5869</i>	<i>1000</i>	<i>W B Bunting</i>	<i>Milleruk</i>	<i>17</i>					<i>1/2</i>				<i>17 1/2</i>	<i>20</i>	<i>350</i>			<i>350</i>			<i>350</i>	<i>42</i>	<i>308</i>		
<i>Hann Samuel</i>	<i>5502</i>	<i>800</i>	<i>R Meaus</i>	<i>Milleruk</i>	<i>17</i>		<i>25</i>		<i>28</i>					<i>30</i>	<i>23</i>	<i>1610</i>			<i>1610</i>			<i>1610</i>	<i>193</i>	<i>1417</i>		
	<i>4065</i>	<i>100</i>	<i>John Overton</i>	<i>Milleruk</i>						<i>12</i>				<i>12</i>	<i>23</i>	<i>276</i>			<i>276</i>			<i>276</i>	<i>33</i>	<i>243</i>		
<i>Harriote Samuel</i>	<i>5497</i>	<i>1358</i>	<i>R Meaus</i>	<i>Blusseruk</i>	<i>40</i>		<i>30</i>		<i>30</i>					<i>100</i>	<i>20</i>	<i>2000</i>	<i>200</i>	<i>200</i>	<i>2400</i>			<i>2400</i>	<i>288</i>	<i>2112</i>		
<i>Harriote Amanda</i>	<i>5497</i>	<i>1358</i>	<i>R Meaus</i>	<i>Blusseruk</i>	<i>14</i>		<i>22</i>		<i>15</i>	<i>3/4</i>				<i>51 1/4</i>	<i>20</i>	<i>1025</i>			<i>1025</i>			<i>1025</i>	<i>123</i>	<i>902</i>		
<i>Hausk Lewis</i>	<i>3735</i>	<i>1000</i>	<i>John Prilo</i>	<i>Milleruk</i>	<i>50</i>		<i>30</i>		<i>42</i>					<i>122</i>	<i>23</i>	<i>2806</i>	<i>200</i>		<i>3006</i>			<i>3006</i>	<i>361</i>	<i>2645</i>		
<i>Hannawalt Berry</i>	<i>5502</i>	<i>800</i>	<i>R Meaus</i>	<i>Milleruk</i>	<i>30</i>		<i>35</i>		<i>17</i>					<i>82</i>	<i>23</i>	<i>1896</i>	<i>200</i>		<i>2096</i>			<i>2096</i>	<i>250</i>	<i>1846</i>		
<i>Jones Lucinda J</i>	<i>5501</i>	<i>800</i>	<i>R Meaus</i>	<i>Milleruk</i>	<i>5</i>		<i>10</i>		<i>24</i>	<i>3/4</i>				<i>39 3/4</i>	<i>21</i>	<i>834</i>			<i>834</i>			<i>834</i>	<i>100</i>	<i>734</i>		
<i>Johnson Griffis</i>	<i>5498</i>	<i>1358</i>	<i>R Meaus</i>	<i>Blusseruk</i>	<i>25</i>		<i>25</i>		<i>25</i>					<i>75</i>	<i>20</i>	<i>1500</i>	<i>300</i>	<i>300</i>	<i>2100</i>			<i>2100</i>	<i>262</i>	<i>1838</i>		
					<i>5</i>		<i>23</i>		<i>5</i>	<i>1/4</i>				<i>33 1/4</i>	<i>20</i>	<i>665</i>			<i>665</i>			<i>665</i>	<i>80</i>	<i>585</i>		
<i>James Samuel</i>	<i>5869</i>	<i>1000</i>	<i>W B Bunting</i>	<i>Leot River</i>	<i>10</i>		<i>10</i>		<i>42</i>	<i>3/4</i>				<i>62 1/2</i>	<i>13</i>	<i>512</i>			<i>512</i>			<i>512</i>	<i>98</i>	<i>414</i>		
														<i>1090 1/2</i>												
					<i>865</i>		<i>335</i>		<i>384</i>	<i>1/2</i>				<i>1084 1/2</i>		<i>23284</i>	<i>2300</i>	<i>500</i>	<i>26084</i>			<i>26084</i>	<i>3130</i>	<i>22954</i>		

Assessment of Real Property in *Dover* Township,

Union County, Ohio, for the Year 1870.

For Plats of all Lands described on this Page, see Page <i>4</i> of Plats.			DESCRIPTION OF PROPERTY.						No. of Acres of Land Classified.			Whole No. of Acres.	Value per Acre for general purposes.	Total Value of Lands, excluding Buildings.	Value of all Buildings.			Total Value of Lands and Buildings.	Amount Added or Deducted by Co. Board of Equalization.		Total Value as Equalized by Co. Board.	Amount Added or Deducted by State Board of Equalization.		Total Value as Equalized by State Board.	REMARKS.
In Whose Name Assessed.	No. of Entry.	Orig'l Quantity.	ORIGINAL PROPRIETOR.	WATER COURSE.	Acres.	H.	Acres.	H.	Acres.	H.	Houses.				Mills.	Other Buildings.	Added Dollars.		Deducted Dollars.	Dollars.		Dollars.	Dollars.		
<i>Liggitt Almer</i>	<i>5869</i>	<i>1000</i>	<i>W. B. Bunting</i>	<i>Bluescreek</i>			<i>14</i>		<i>163 1/2</i>					<i>177 1/2</i>	<i>12</i>	<i>2130</i>		<i>2130</i>			<i>2130</i>	<i>256</i>	<i>1874</i>		
	<i>5499</i>	<i>1358</i>	<i>R. Means</i>		<i>50</i>		<i>16</i>		<i>199</i>					<i>265</i>	<i>22</i>	<i>5830</i>	<i>250</i>	<i>6250</i>			<i>6250</i>	<i>754</i>	<i>5526</i>		
	<i>5499</i>				<i>5</i>				<i>85 1/2</i>					<i>60 1/2</i>	<i>12</i>	<i>726</i>		<i>726</i>			<i>726</i>	<i>87</i>	<i>639</i>		
<i>Lane John</i>	<i>9028</i>	<i>1000</i>	<i>John Hunt</i>	<i>Milleruck</i>			<i>15</i>							<i>15</i>	<i>17</i>	<i>258</i>		<i>258</i>			<i>258</i>	<i>31</i>	<i>229</i>		
<i>Langbrake Levi</i>	<i>9028</i>	<i>1000</i>	<i>John Hunt</i>	<i>Milleruck</i>	<i>80</i>		<i>85</i>		<i>100</i>					<i>265</i>	<i>22</i>	<i>5830</i>		<i>5830</i>			<i>5830</i>	<i>700</i>	<i>5130</i>		
<i>Lane Isaiah</i>	<i>9028</i>	<i>1000</i>	<i>John Hunt</i>	<i>Milleruck</i>	<i>35</i>		<i>25</i>		<i>8 3/4</i>					<i>68 3/4</i>	<i>24</i>	<i>1650</i>	<i>200</i>	<i>1850</i>			<i>1850</i>	<i>222</i>	<i>1628</i>		
<i>Liggett James</i>	<i>3007</i>	<i>1087</i>	<i>John Graham</i>	<i>Milleruck</i>	<i>14</i>		<i>72</i>		<i>86 1/2</i>					<i>172 1/2</i>	<i>19</i>	<i>3277</i>		<i>3377</i>			<i>3377</i>	<i>405</i>	<i>2972</i>		
<i>Lane Chas. K.</i>	<i>4065</i>	<i>1000</i>	<i>John Coerton</i>	<i>Milleruck</i>			<i>25 1/2</i>							<i>25 1/2</i>	<i>21</i>	<i>535</i>		<i>535</i>			<i>535</i>	<i>64</i>	<i>471</i>		
	<i>3956</i>		<i>John White</i>		<i>21</i>		<i>72</i>		<i>25</i>					<i>118</i>	<i>23</i>	<i>2714</i>	<i>600</i>	<i>3314</i>			<i>3314</i>	<i>399</i>	<i>2916</i>		
<i>Loveless W. G. May</i>	<i>4065</i>	<i>1000</i>	<i>John Coerton</i>	<i>Milleruck</i>	<i>3</i>		<i>50</i>		<i>60</i>					<i>113</i>	<i>23</i>	<i>2599</i>		<i>2599</i>			<i>2599</i>	<i>312</i>	<i>2287</i>		
	<i>5502</i>	<i>800</i>	<i>R. Means</i>		<i>22</i>		<i>15</i>							<i>37</i>	<i>23</i>	<i>851</i>	<i>200</i>	<i>1251</i>			<i>1251</i>	<i>160</i>	<i>1101</i>		
<i>Liggett Arthur</i>	<i>3501</i>	<i>800</i>	<i>R. Means</i>	<i>Milleruck</i>	<i>60</i>		<i>40</i>		<i>49 1/2</i>					<i>149 1/2</i>	<i>23</i>	<i>3438</i>		<i>3438</i>			<i>3438</i>	<i>413</i>	<i>3025</i>		
<i>Liggett William</i>	<i>3007</i>	<i>1087</i>	<i>John Graham</i>		<i>24</i>		<i>18</i>		<i>10</i>					<i>52</i>	<i>22</i>	<i>1944</i>		<i>1144</i>			<i>1144</i>	<i>137</i>	<i>1007</i>		
<i>Myers John</i>	<i>5498</i>	<i>1350</i>	<i>R. Means</i>	<i>Milleruck</i>	<i>20</i>		<i>78</i>		<i>30 3/4</i>					<i>128 3/4</i>	<i>22</i>	<i>2832</i>	<i>100</i>	<i>3282</i>			<i>3282</i>	<i>394</i>	<i>2888</i>		
					<i>18</i>		<i>10</i>		<i>10 1/2</i>					<i>38 1/2</i>	<i>20</i>	<i>670</i>		<i>670</i>			<i>670</i>	<i>80</i>	<i>590</i>		
<i>Myers Adam</i>					<i>25</i>		<i>90</i>		<i>40 1/4</i>					<i>158 1/4</i>	<i>23</i>	<i>3570</i>		<i>3570</i>			<i>3570</i>	<i>428</i>	<i>3142</i>		
<i>Mitchell George</i>	<i>3007</i>	<i>1087</i>	<i>John Graham</i>	<i>Milleruck</i>	<i>56</i>		<i>22</i>		<i>38</i>					<i>116</i>	<i>22</i>	<i>2668</i>	<i>150</i>	<i>2818</i>			<i>2818</i>	<i>338</i>	<i>2480</i>		
	<i>4065</i>	<i>1000</i>	<i>John Coerton</i>		<i>10</i>				<i>20</i>					<i>30</i>	<i>17</i>	<i>510</i>		<i>510</i>			<i>510</i>	<i>61</i>	<i>449</i>		
<i>Murphy John</i>	<i>4065</i>	<i>1000</i>	<i>Ed. Dunsen</i>	<i>Milleruck</i>	<i>15</i>		<i>6</i>		<i>5 1/2</i>					<i>26 1/2</i>	<i>22</i>	<i>583</i>		<i>583</i>			<i>583</i>	<i>70</i>	<i>513</i>		
	<i>5502</i>	<i>800</i>	<i>R. Means</i>				<i>3</i>		<i>1 1/2</i>					<i>3 1/4</i>	<i>22</i>	<i>77</i>		<i>77</i>			<i>77</i>	<i>9</i>	<i>68</i>		
<i>Mackin John</i>	<i>3355</i>	<i>372</i>	<i>Ed. Dunsen</i>	<i>Milleruck</i>	<i>12</i>		<i>4</i>		<i>15 1/2</i>					<i>31 1/2</i>	<i>21</i>	<i>661</i>		<i>661</i>			<i>661</i>	<i>79</i>	<i>582</i>		
	<i>5497</i>	<i>1358</i>	<i>R. Means</i>		<i>5</i>									<i>5</i>	<i>20</i>	<i>100</i>		<i>100</i>			<i>100</i>	<i>12</i>	<i>88</i>		
<i>McCreary W. J.</i>	<i>3956</i>	<i>1000</i>	<i>John White</i>	<i>Milleruck</i>	<i>12</i>		<i>10</i>		<i>24 1/2</i>					<i>46 1/2</i>	<i>23</i>	<i>1669</i>	<i>600</i>	<i>1669</i>			<i>1669</i>	<i>200</i>	<i>1469</i>		
<i>McKinley John J.</i>	<i>5497</i>	<i>1358</i>	<i>R. Means</i>	<i>Milleruck</i>	<i>30</i>		<i>129</i>		<i>100 1/2</i>					<i>259 1/2</i>	<i>21</i>	<i>5469</i>	<i>500</i>	<i>5969</i>			<i>5969</i>	<i>714</i>	<i>5255</i>		
<i>McAllister Alexander</i>	<i>5497</i>	<i>1358</i>	<i>R. Means</i>	<i>Milleruck</i>	<i>26</i>				<i>20</i>					<i>56</i>	<i>21</i>	<i>1176</i>		<i>1376</i>	<i>200</i>		<i>1376</i>	<i>165</i>	<i>1211</i>		
<i>McAllister Samuel</i>	<i>5497</i>	<i>1358</i>	<i>R. Means</i>	<i>Milleruck</i>	<i>24</i>		<i>18</i>		<i>5 3/4</i>					<i>48 3/4</i>	<i>21</i>	<i>1023</i>		<i>1023</i>			<i>1023</i>	<i>123</i>	<i>900</i>		
														<i>2460 1/2</i>											
					<i>570</i>		<i>817</i>		<i>1072 1/4</i>					<i>2459 3/4</i>		<i>5187</i>	<i>2600</i>	<i>950</i>	<i>55017</i>			<i>55017</i>	<i>6603</i>	<i>45016</i>	

Assessment of Real Property in Dover Township,

Union County, Ohio, for the Year 1870.

For Plats of all Lands described on this Page, see Page 57 of Plats.	DESCRIPTION OF PROPERTY.				No. of Acres of Land Classified.						Whole No. of Acres.	Value per Acre, including Buildings.	Total Value of Lands, excluding Buildings.	Value of all Buildings.			Total Value of Lands and Buildings.	Amount Added or Deducted by Co. Board of Equalization.		Total Value as Equalized by Co. Board.	Amount Added or Deducted by State Board of Equalization.		Total Value as Equalized by State Board.	REMARKS.
					Arable & Plow Land.		Meadow & Pasture Land.		Uncultiv'd & Wood Land.					Houses.	Mills.	Other Buildings.		Added Dollars.	Deducted Dollars.		Added Dollars.	Deducted Dollars.		
					Acres.	H.	Acres.	H.	Acres.	H.				Dollars.	Dollars.	Dollars.		Dollars.	Dollars.		Dollars.	Dollars.		
Riehy Adam Sr	5735	800	John Pridle	Bluescreek						3/4		28	21		21			21		3	15			
	9028	1000	John Hunt	"	40		20		25		85	22	1870		1870			1870		224	1646			
	4065		John Covert	Millerick	13				10 3/4		23 3/4	22	522		522			522		63	459			
Riehy Joseph H	3956	1000	John White	Bluescreek	65		65		36		166	29	4814		4814			4814		578	4236			
	9028		John Hunt	Millerick	20		30		11		111	23	2553	250	2803			2803		336	2467			
Riehy Jefferson L	5502	1000	R Means	Millerick	36		29		15		80	23	1840	200	2040			2040		245	1795			
Riehy Catherine	4065	1000	John Covert	Millerick	10		10				20	22	440		440			440		63	387			
Riehy William H	9028	1000	John Hunt	Bluescreek			22		10		32	21	672		672			672		81	591			
Robinson John	5735	1000	John Pridle	Millerick	25		42		45		112	22	2464		2464			2464		296	2168			
Ralston M J	5298	1358	R Means	Bluescreek	52		48		20		115	21	2415		2415			2415		290	2125			
	5705	255	"	"	24		69		60		103	20	2060	300	3360			3360		403	2957			
Ralston William J	5498	1358	"	"							12													
Robinson John Sr	5499	1358	R Means	Bluescreek	6		102				108	22	2376	900	3576			3576		429	3147			
Ritterhouse Dr	5499	1358	R Means	Bluescreek	35		25		65		125	21	2625		2625			2625		315	2310			
Ritterhouse Samuel J	5498	1358	R Means	Bluescreek	50		50		144 3/4		244 3/4	24	5874	500	6674			6674		801	5873			
Ritterhouse Henry G	5499	1358	R Means	Bluescreek	30		55		57		142	22	3124	400	3774			3774		453	3321			
Russell Joseph	9028	1000	John Hunt	Bluescreek	18		59		23		100	24	2400	600	3200			3200		384	2816			
Raussey William	3007	1087	J Graham	Millerick	57		27		44 3/4		128 3/4	23	2961	700	3661			3661		439	3222			
Ritterhouse Thomas	5498	1358	R Means	Bluescreek	11						11	23	253		253			253		20	223			
Rogus Benjamin	3007	1087	J Graham	Millerick	16		32		22		70	22	1540	150	1840			1840		231	1619			
Riehy Leonard	4065	1000	John Covert	Millerick	38		15		30 1/2		83 1/2	22	1837	200	2037			2037		244	1793			
Riehy Adam Jr	4065	1000	John Covert	Millerick					7		7	22	154		154			154		19	135			
	5002	800	R Means	"	38		53		15 3/4		106 3/4	22	2348	100	2448			2448		294	2154			
Roberts William	5731	1000	John Pridle	Millerick	6		11				17	27	459		459			459		53	402	Grape & Buck long, necessary		
											2042 1/4													
					590		809 3/4		642 1/2		2042 1/4		46622	3900	1600	52122			52122		6258	45867		

For Plats of all Lands described on this Page, see Page _____ of Plats.	DESCRIPTION OF PROPERTY.				No. of Acres of Land Classified.						Value of all Buildings.			Total Value of Lots and Buildings.	Amount Added or Deducted by Co. Board of Equalization.		Total Value as Equalized by Co. Board.	Amount Added or Deducted by State Board of Equalization.		Total Value as Equalized by State Board.	REMARKS.	
					Arable & Plow Land.		Meadow & Pasture Land.		Uncultiv'd & Wood Land.		Houses.	Mills.	Other Buildings.		Dollars.	Dollars.		Dollars.	Dollars.			Dollars.
					Acres.	H.	Acres.	H.	Acres.	H.	Dollars.	Dollars.	Dollars.									
In whose name assessed.	No. of Entry.	Orig'l Quantity.	ORIGINAL PROPRIETOR.	WATER COURSE.		Acres.	H.	Acres.	H.	Acres.	H.											
<i>District Sub School</i>	<i>1</i>			<i>Millersk</i>											<i>400</i>							
<i>✓ " "</i>	<i>2</i>			<i>"</i>											<i>400</i>							
<i>" " "</i>	<i>3</i>			<i>Summs Run</i>											<i>400</i>							
<i>" " "</i>	<i>4</i>			<i>Millersk</i>											<i>1500</i>							
<i>" " "</i>	<i>5</i>			<i>Summs Run</i>											<i>400</i>							
<i>" " "</i>	<i>6</i>			<i>Blues cut</i>											<i>400</i>							
<i>" " "</i>	<i>7</i>			<i>" "</i>											<i>400</i>							
			<i>Church</i>																			
			<i>W. E. Church Dover</i>							<i>1</i>					<i>1400</i>							
			<i>Baptist Church "</i>							<i>1/2</i>					<i>1500</i>							
			<i>Baptist Church Blues cut</i>							<i>1/2</i>					<i>1400</i>							
			<i>Grave yards</i>																			
			<i>Mt Hermon</i>												<i>50</i>							
			<i>Bury tow</i>							<i>1</i>					<i>100</i>							

DOVER TP.
UNION COUNTY
1870.