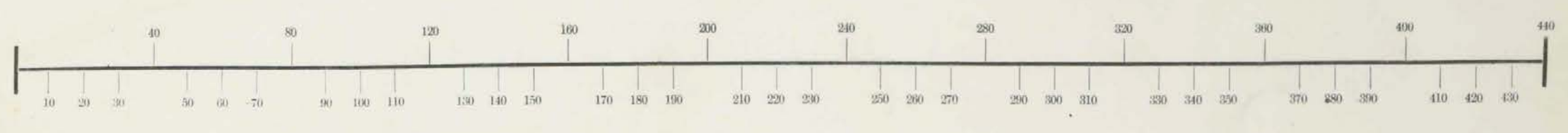


**JEROME TP.
UNION COUNTY
1870**

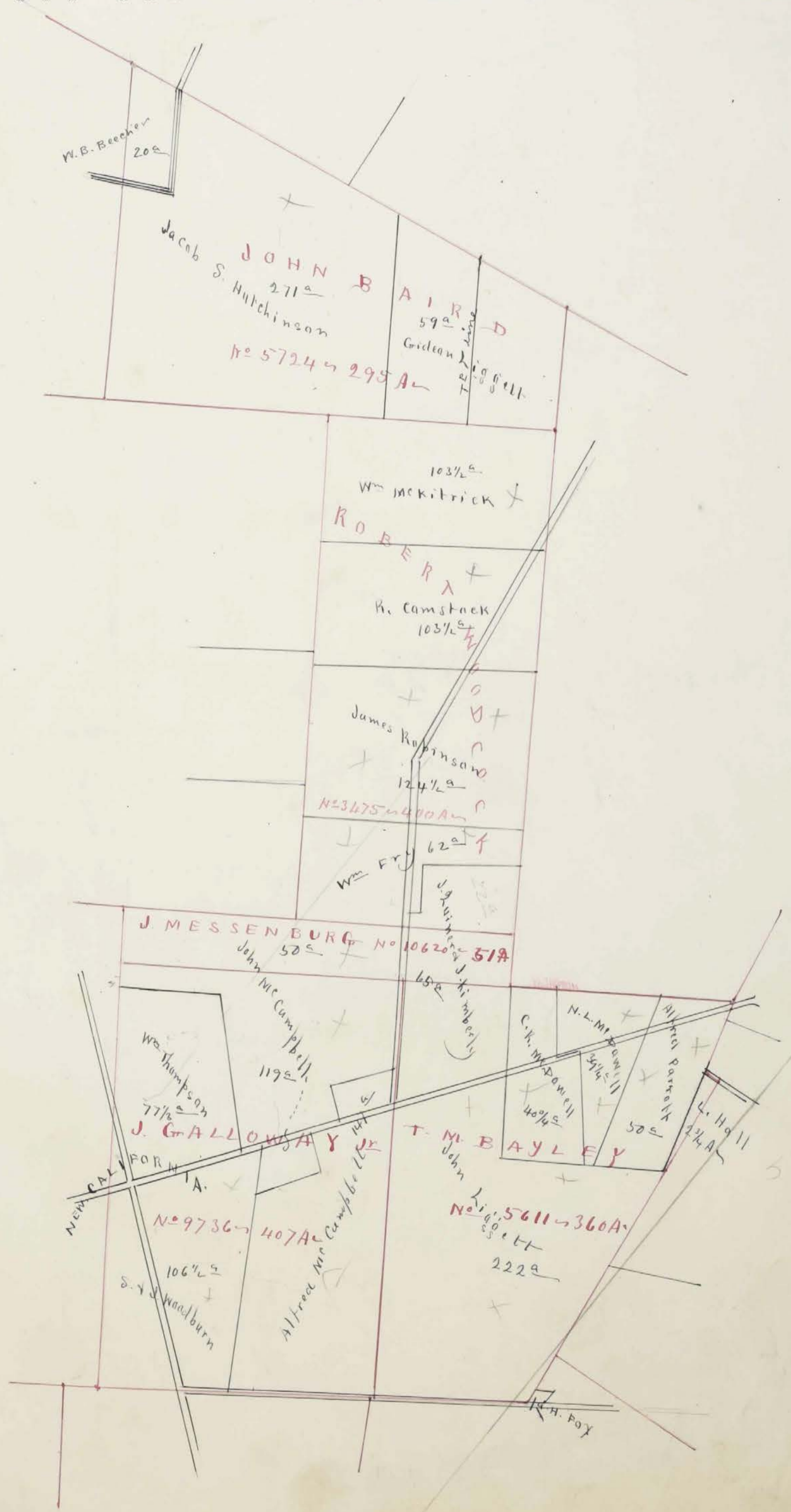
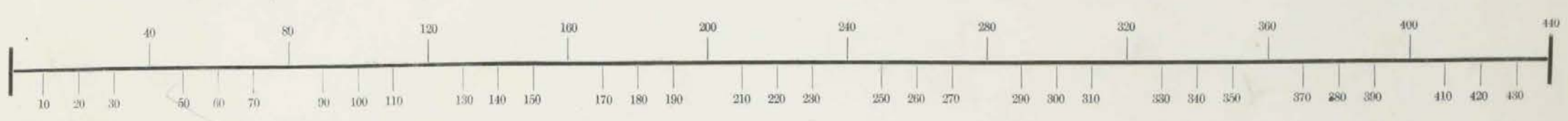
Section, No. _____ Lot _____

Scale, ⁸⁰ 40 Rods to an Inch, or ²⁰ 10 Rods to 1-4 Inch.



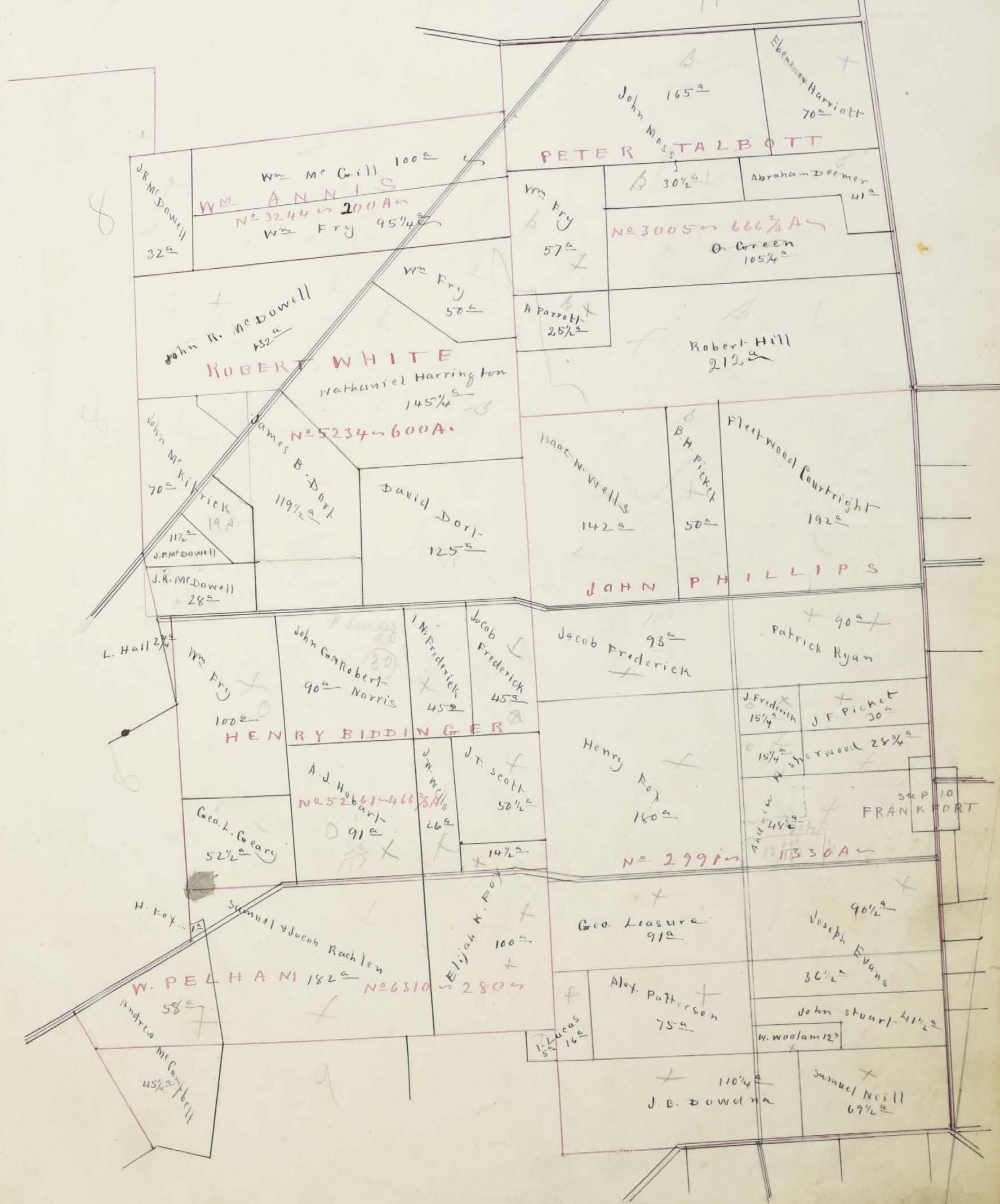
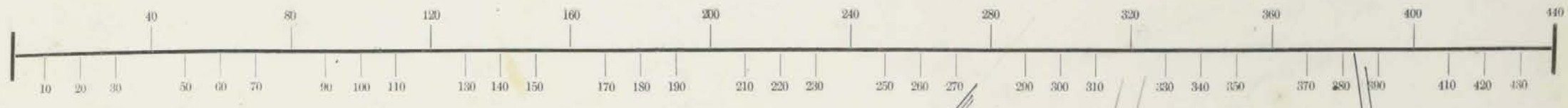
Section, No. Lot

Scale, ⁸⁰40 Rods to an Inch, or ²⁰10 Rods to 1-4 Inch.



Section, No. _____ Lot _____

Scale, 40 Rods to an Inch, or 10 Rods to 1-4 Inch.



Handwritten calculations in the top right corner:

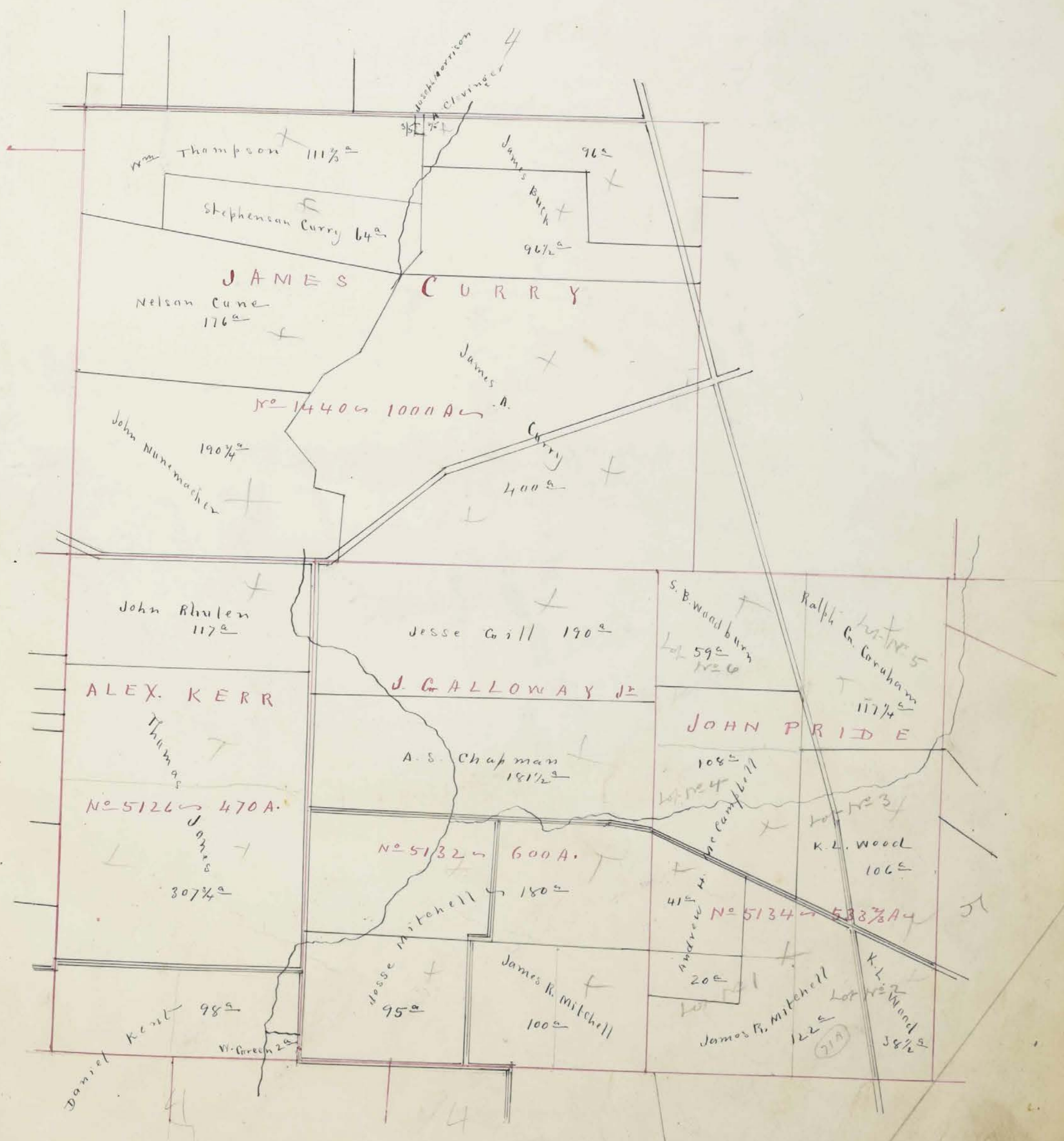
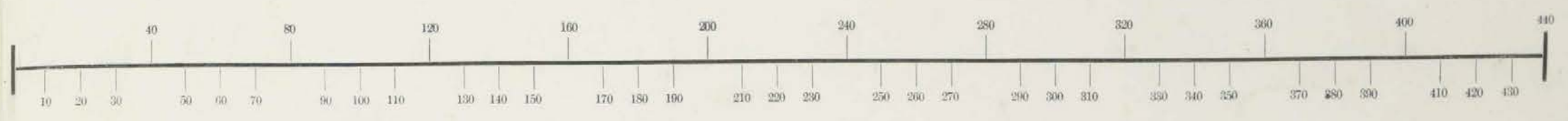
```

70
30
-----
210
15
-----
2115
10
-----
2115
51
-----
2166
43
-----
2209

```

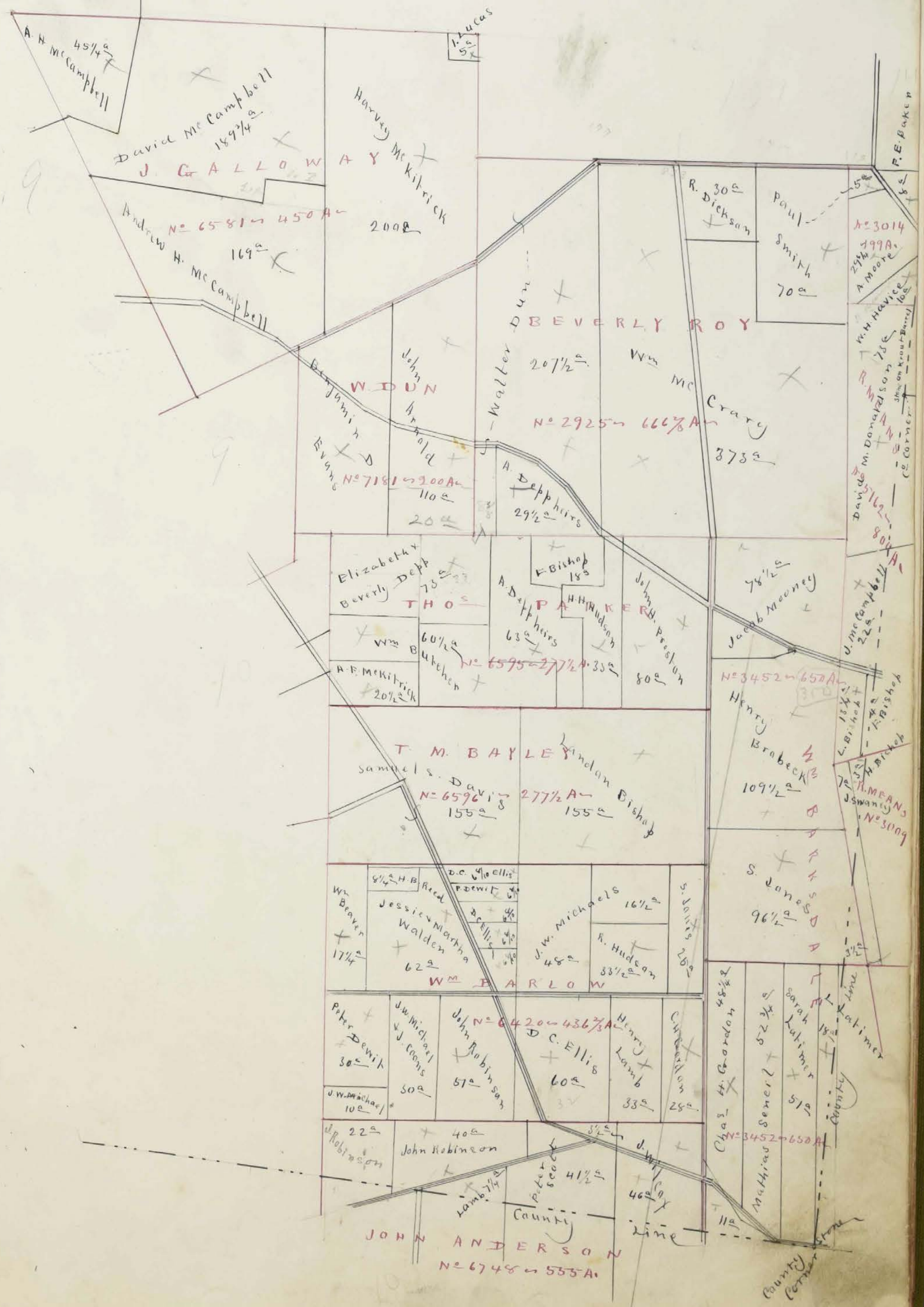
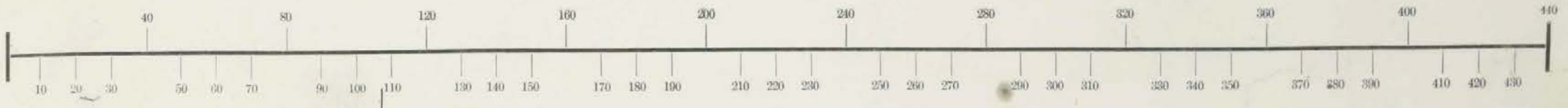

Section, No. _____ Lot _____

Scale, ⁸⁰40 Rods to an Inch, or ²⁰10 Rods to 1-4 Inch.



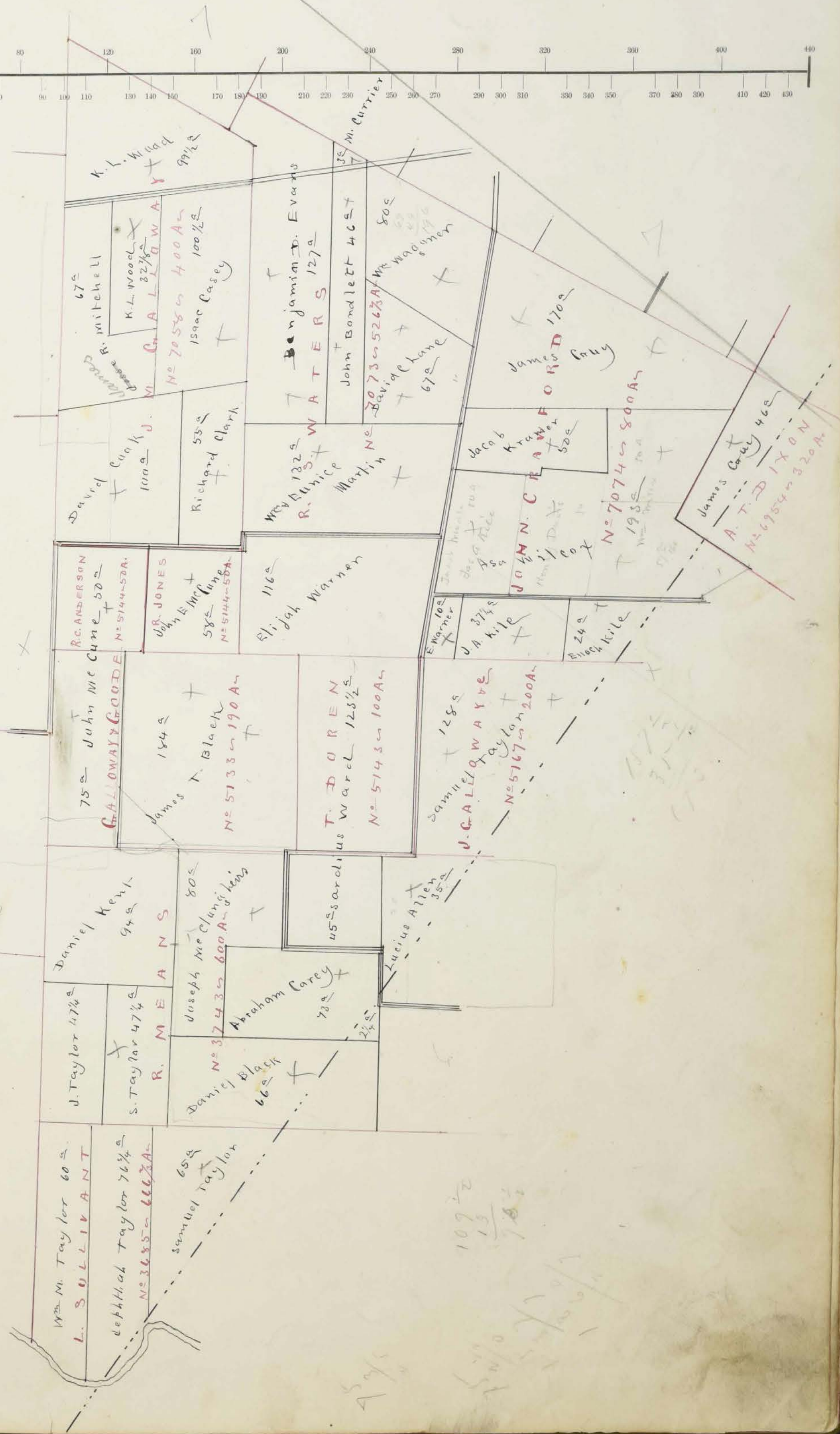
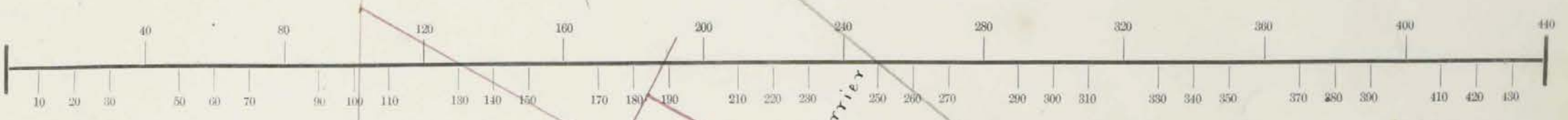
Section, No. _____ Lot _____

Scale, ⁸⁰ 40 Rods to an Inch, or ²⁰ 10 Rods to 1-4 Inch.



Section, No. Lot

Scale, 40 Rods to an Inch, or 10 Rods to 1-4 Inch.



Wm. Taylor 60^s
L. SULLIVANT

Leplthah Taylor 76¹/₄^a
N^o 3685^o 666³/₄A^o

Samuel Taylor
65^a

J. Taylor 47¹/₄^a

S. Taylor 47¹/₄^a

R. M E A N S

Daniel Black
66^a

Joseph McClung
80^s
N^o 3743^o 600^a 60^o 60^o

Abraham Carey
73^a

Lucius Allen
35^a

75^a John Mc Cune 50^s

GALLOWAY & GOODE

James T. Black
184^a
N^o 5133^o 190^a

T. D O R E N
Warol 128¹/₂^s
N^o 5143^o 100^a

Samuel W A Y V E
128^s
N^o 5167^o 200^a

R. C. ANDERSON
John Mc Cune 50^s
N^o 5144^o 50^a

R. JONES
58^s
N^o 5144^o 50^a

Elijah Warner
116^a

E. Warner
100^s

J. A. Kile
37¹/₂^s

Enoch Kile
24^a

David Clark
100^a

Richard Clark
55^a

Wm. R. Dunnic
132^s
Martin
N^o 7058^o 400^a

Jacob Krawler
50^a

J. M. N. C. R A W F O R D
50^a

James Carey
46^s
N^o 7074^o 800^a

James Carey
46^s
A. T. D I X O N
N^o 6954^o 320^a

James Mitchell
67^s

K. L. Wood
82¹/₂^s

M. G. A L L O W A Y
N^o 7058^o 400^a
Isaac Casey
100¹/₂^s

Benjamin D. Evans
W A T E R S
127^a

John Bondlett
46^s
N^o 7305^o 526³/₄A^o

David Clane
67^a

James Carey
170^a

K. L. Wood
99¹/₂^a

M. Currier
35^a

John Bondlett
46^s

David Clane
67^a

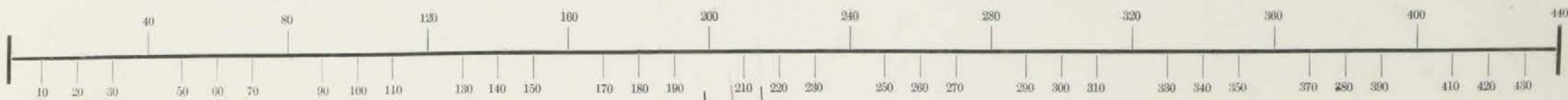
James Carey
170^a

James Carey
46^s

107¹/₂
13
78¹/₂

Section, No. _____ Lot _____

Scale, 40 Rods to an Inch, or 10 Rods to 1-4 Inch.



A. H. Sherwood

S. G. Hyland
1 30/160 a

Israel

J. W. Wells
5/16 a

Woolam

S. G. Hyland
1 13/160 a

38	34
40	34

35	37
33	39

S. C. South
1 a

32	2
30	4

1	31
3	29

A. H. Sherwood
2 a

28	6
26	8
24	10
22	12

5	27
7	25

FRANKFORT
Union Co Ohio

20	14
18	16

13	19
15	17

Henry Hensel

C. A. Grubbs 1/2 a

School 1/2 a

Christian Church 1 a

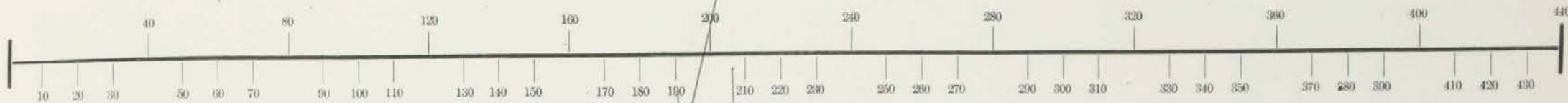
H. Hensel 1/2 a

John Evans
3 a

No 2991
Small Lots Not Platted in
S. W. H. Durborough - 1 2 1/4 a
Abrose Beach - 1 1/2 a
Josephine Collier - 1 1/2 a
W. Cole - 1/2 a
Lucinda Hobert - 1 1/2 a

Section, No. _____ Lot _____

Scale, 40 Rods to an Inch, or 10 Rods to 1-4 Inch.



New
 California
 Union Co Ohio

Numbers not on Duplicate

Assessment of Real Property in *From* Township,

Union County, Ohio, for the Year 1870.

For Plats of all Lands described on this Page, see Page _____ of Plats.		DESCRIPTION OF PROPERTY.				No. of Acres of Land Classified.				Whole No. of Acres.	Value per Acre excluding Buildings.	Total Value of Lands, excluding Buildings.	Value of all Buildings.			Total Value of Lands and Buildings.	Amount Added or Deducted by Co. Board of Equalization.		Total Value as Equalized by Co. Board.	Amount Added or Deducted by State Board of Equalization.		Total Value as Equalized by State Board.	REMARKS.
In Whose Name Assessed.	No. of Entry.	Orig'l Quantity.	ORIGINAL PROPRIETOR.	WATER COURSE.	Arable & Plow Land.	Meadow & Pasture Land.	Uncultivated & Wood Land.	Acres.	H.				Acres.	H.	Acres.		H.	Houses.		Mills.	Other Buildings.		
Adams Amos P	3484	800	L. Sullivan	Darbycreek	48	22	35	4	108 1/4	25	2715		200		2915			2915		350	2565		
Allen Lucas	3743	600	R. Means	Darbycreek	42	10	13		35	26	910				910			910		100	800		
Andrews Jessie	2990	666	Scoto River	Darbycreek	40	25	3	1/2	68 1/2	20	1370				1370			1370		164	1206		
Arnold John	7181	200	Scoto River	Darbycreek	60	10	40		110	25	2750				2750			2750		330	2420		
Ashbaugh David R	3003	174	Darbycreek	Darbycreek	10	6	1/2		16 1/4	22	355				355			355		43	312		
Brobeck Henry	3452	652	W. Barndale	Scoto River	60	20	29	1/2	109 1/2	30	3285	600	300		4185			4185		502	3683		
Butcher William	6595	2000	R. Means	Darbycreek	40	10	10	1/2	60 1/2	25	1512				1512			1512		181	1331		
Beard William	5166	2000	R. Means	Darbycreek	30	10	35		75	21	1575				1575			1575		189	1386	24	
Buck James	1440	1000	J. Carey	Darbycreek	45	35	82	1/2	192 1/2	23	4427				4427			4427		531	3896		
Black Daniel	3743	600	R. Means	Darbycreek	20	10	30		66	25	1584				1584			1584		226	1658		
Black James F	5133	190	J. Galloway	Darbycreek	70	30	84		184	25	5152				5152			5152		618	4534		
Baker Francis E	3014	199	H. Gillman	Scoto River		8			8	20	160				160			160		19	141		
Brown Thomas	7074	800	John Crawford	Scoto River					5													Not found	
Bishop Finley	5762	800	R. Means	Scoto River	1	1/4			3	30	90				187			187		23	164		
	6595	212 1/2	Th. Parker		10	8			18	30	540	150			540			540		65	475		
Bishop Landre	6595	373 1/2	Th. Parker	Scoto River	85	15	55		155	29	4495				4495			4495		539	3956		
	5162				13	3/4			13 3/4	30	412				412			412		50	362		
Beach Ambrose	3991	1330	John Phillips	Scoto River	8	3	1/2		11 1/2	24	276				276			276		30	243		
Buck Perry	9736	585	J. Galloway	Darbycreek					4 1/4	100	25				25			25		3	22		
Batter Jonathan	419	1200	W. Brown	Darbycreek	40	10	30		80	20	1600				1600			1600		192	1408		
					623	232 3/4	457 1/2		1313 3/4		33483	750	500		34733			34733		4168	30565		

Assessment of Real Property in *Jermol* Township,

Union County, Ohio, for the Year 1870.

For Plats of all Lands described on this Page, see Page _____ of Plats.	DESCRIPTION OF PROPERTY.				No. of Acres of Land Classified.						Whole No. of Acres.	Value per Acre excluding Buildings.	Total Value of Lands, excluding Buildings.	Value of all Buildings.			Total Value of Lands and Buildings.	Amount Added or Deducted by Co. Board of Equalization.		Total Value as Equalized by Co. Board.	Amount Added or Deducted by State Board of Equalization.		Total Value as Equalized by State Board.	REMARKS.
					Arable & Plow Land.		Meadow & Pasture Land.		Uncultivated & Wood Land.					Houses.	Mills.	Other Buildings.		Added Dollars.	Deducted Dollars.		Added Dollars.	Deducted Dollars.		
					Acres.	H.	Acres.	H.	Acres.	H.														
Baudette John	7073	526	R. G. Walker	Scioto River	23				23		46	25	1150		200	1350		1350		162	1185			
Beaver William	6420	426	W. Barlow	Darbycreek	11	1/4					11 1/4	20	345			345		345		41	304	X		
Beecher Walter	5417	200	W. Lamm	Darbycreek	20		30		11		61	25	1525			1525		1525		343	1342			
Beecher Walter, B.	5734	295	John Baine	"							20	25	500			500		500		60	440			
Beker Robert & J. Black	5128	80	A. Kerr	Darbycreek					30		30	40	1200			1200		1200		144	1056			
Converse Asa	10708	90	W. Sullivan	Darbycreek	6		7	1/2			13 1/2	45	607	900		400 607		1007		121	886			
Converse Spire	5758 7828	168	Graham & W. W. W.	Darbycreek	2						2	45	90			90		90		11	79			
Cornwrights John & Wm	2991	1330	J. Phillips	Scioto River	50		75		61		192	23	4416			4416		4416		580	3886			
Cook James	6420	436	W. Barlow	Scioto River	10						10	25	250			250		250		30	220			
Curry Stephenson	1440	1000	J. L. Curry	Darbycreek	30		20		14		64	24	1536			1536		1536		144	1352			
Curry James A.	1440	1000	J. L. Curry	Darbycreek	150		50		200		408	28	11200		300	11500		11500		1380	10120			
Cove Nelson	1440	1000	J. L. Curry	Darbycreek	80		20		94		174	28	4872		400	5272		5272		633	4639			
Cook David	7058	400	J. Galloway	Scioto River	20		10		70		100	20	2000			2000		2000		240	1760			
Curry Abraham	3743	600	R. Means	Darbycreek			40		33		73	28	2044			2044		2044		246	1798			
Cougill John	5166	2000	R. Means	Darbycreek	80		20		58		158	28	4424			4424		4424		531	3893			
Clevinger Sarah A.	1440	1000	J. L. Curry	Darbycreek			1/2				1/2	40	20			20		20		2	18			
Chapman A. S.	5132	600	J. Galloway	Darbycreek	100		50		32		182	32	5824	600		6424		6424		771	5253			
Collier Josephus	2991	1330	J. Phillips	Darbycreek	1	1/4					1 1/4	32	40			40		40		5	35			
Constock R.	3745	400	R. Woodcock	Scioto River	65		15		23 1/2		103 1/2	28	2898			2898		2898		348	2550			
Crozier Mchitable	7073	526	R. G. Waters	Scioto River	3						3	25	75	200		275		275		33	242	X		
Chamull Isaac	7058	400	J. Galloway	Scioto River	20		5		18		38	22	836			836		836		100	736			
Cove Alice	4419	1200	W. Brown	Darbycreek	75		20		45		140	25	3500			3500		3500		420	3080			
Cove George	5128	80	"	Darbycreek	6						6	35	210			210		210		25	185			
					753		412		663		1529		47352	800	900	51052		51052		6200	45462			
					6						6		210			210		210						
													11502	1200		51662		51662						

Assessment of Real Property in *Jerome* Township,

Union County, Ohio, for the Year 1870.

For Plats of all Lands described on this Page, see Page _____ of Plats.			DESCRIPTION OF PROPERTY.						No. of Acres of Land Classified.		Whole No. of Acres.	Value per Acre for all Buildings.	Total Value of Lands, excluding Buildings.	Value of all Buildings.			Total Value of Lands and Buildings.	Amount Added or Deducted by Co. Board of Equalization.		Total Value as Equalized by Co. Board.	Amount Added or Deducted by State Board of Equalization.		Total Value as Equalized by State Board.	REMARKS.
In Whose Name Assessed.	No. of Entry.	Orig'l Quantity.	ORIGINAL PROPRIETOR.	WATER COURSE.	Acres.	H.	Acres.	H.	Acres.	H.				Houses.	Mills.	Other Buildings.		Added Dollars.	Deducted Dollars.		Added Dollars.	Deducted Dollars.		
<i>Dewit Peter</i>	<i>6420</i>	<i>436</i>	<i>W Barlow</i>	<i>Darbycrnk</i>	<i>12</i>		<i>10</i>		<i>14</i>	<i>1/2</i>	<i>36 1/2</i>	<i>22</i>	<i>803</i>			<i>803</i>		<i>803</i>	<i>96</i>	<i>707</i>				
<i>Doll Dela L</i>	<i>3734</i>	<i>400</i>	<i>C Simons</i>	<i>Darbycrnk</i>	<i>1</i>		<i>1/2</i>				<i>1 1/2</i>	<i>40</i>	<i>60</i>			<i>60</i>		<i>60</i>	<i>7</i>	<i>53</i>				
<i>Dodge John K</i>	<i>5417</i>	<i>200</i>	<i>M Lamm</i>	<i>Darbycrnk</i>	<i>100</i>		<i>50</i>		<i>50</i>		<i>200</i>	<i>30</i>	<i>6000</i>	<i>300</i>		<i>300</i>		<i>6600</i>	<i>792</i>	<i>5808</i>				
<i>Donaldson David M</i>	<i>5162</i>	<i>800</i>	<i>R Means</i>	<i>Darbycrnk</i>	<i>40</i>		<i>10</i>		<i>23</i>		<i>73</i>	<i>22</i>	<i>1606</i>			<i>1606</i>		<i>1606</i>	<i>193</i>	<i>1413</i>				
<i>Barbarus S. H.</i>	<i>2991</i>	<i>1330</i>	<i>J Phillips</i>	<i>Scoto River</i>	<i>1</i>						<i>1</i>	<i>30</i>	<i>30</i>			<i>30</i>		<i>30</i>	<i>4</i>	<i>26</i>	<i>Assessor to get amount of land owned by Barbarus and put on duplicate</i>			
											<i>1 1/2</i>	<i>30</i>	<i>45</i>			<i>45</i>		<i>45</i>	<i>5</i>	<i>40</i>				
<i>Ewing Benjamin D</i>	<i>7181</i>	<i>200</i>	<i>Chalter Dan</i>	<i>Scoto River</i>	<i>50</i>		<i>20</i>		<i>29</i>		<i>99</i>	<i>28</i>	<i>2772</i>	<i>200</i>		<i>200</i>		<i>3172</i>	<i>381</i>	<i>2791</i>				
	<i>7073</i>	<i>526</i>	<i>R. J. Walters</i>	<i>✓</i>	<i>21</i>				<i>100</i>		<i>137</i>	<i>24</i>	<i>3048</i>			<i>3048</i>		<i>3048</i>	<i>366</i>	<i>2682</i>				
<i>Ellis David C</i>	<i>6420</i>	<i>436</i>	<i>W Barlow</i>	<i>Scoto River</i>	<i>50</i>		<i>25</i>		<i>13</i>		<i>88</i>	<i>26</i>	<i>2288</i>			<i>2288</i>		<i>2288</i>	<i>275</i>	<i>2013</i>				
<i>Ewing James S</i>	<i>13125</i>	<i>63</i>	<i>S Whitehead</i>	<i>Darbycrnk</i>	<i>10</i>		<i>8</i>		<i>7</i>		<i>25</i>	<i>35</i>	<i>875</i>			<i>875</i>		<i>875</i>	<i>105</i>	<i>770</i>				
	<i>7758</i>	<i>168</i>	<i>Graham and Senggs</i>	<i>✓</i>	<i>1</i>						<i>1</i>	<i>35</i>	<i>35</i>			<i>35</i>		<i>35</i>	<i>4</i>	<i>31</i>				
<i>Ewing Sathiel</i>	<i>13125</i>	<i>63</i>	<i>S Whitehead</i>	<i>Darbycrnk</i>			<i>10</i>		<i>5</i>		<i>15</i>	<i>32</i>	<i>480</i>			<i>480</i>		<i>480</i>	<i>58</i>	<i>422</i>				
<i>Evans John</i>	<i>2991</i>	<i>1330</i>	<i>J Phillips</i>	<i>Scoto River</i>	<i>25</i>		<i>25</i>		<i>40</i>	<i>1/2</i>	<i>90 1/2</i>	<i>24</i>	<i>2172</i>	<i>400</i>		<i>2572</i>		<i>2572</i>	<i>309</i>	<i>2263</i>				
<i>Evans W. Stuart</i>	<i>2991</i>	<i>1330</i>	<i>J Phillips</i>	<i>Scoto River</i>	<i>40</i>		<i>20</i>		<i>18</i>		<i>78</i>	<i>22</i>	<i>1716</i>			<i>1716</i>		<i>1716</i>	<i>206</i>	<i>1510</i>				
<i>Ewing S</i>	<i>7758</i>	<i>168</i>	<i>Graham and Senggs</i>	<i>Darbycrnk</i>			<i>2</i>				<i>2</i>	<i>45</i>	<i>90</i>			<i>90</i>		<i>90</i>	<i>10</i>	<i>80</i>				
<i>Evans John</i>	<i>3503</i>	<i>3265</i>	<i>W Pelham</i>	<i>Darbycrnk</i>			<i>3</i>				<i>3</i>	<i>25</i>	<i>75</i>			<i>75</i>		<i>75</i>	<i>9</i>	<i>66</i>				
<i>Foy Elijah K</i>	<i>6310</i>	<i>250</i>	<i>W Pelham</i>	<i>Darbycrnk</i>	<i>40</i>		<i>40</i>		<i>20</i>		<i>100</i>	<i>24</i>	<i>2400</i>		<i>300</i>	<i>2700</i>		<i>2700</i>	<i>324</i>	<i>2376</i>				
	<i>5261</i>	<i>466 1/2</i>	<i>H Bedinger</i>	<i>Scoto River</i>	<i>4</i>		<i>4 1/2</i>				<i>14 1/2</i>	<i>24</i>	<i>348</i>	<i>600</i>		<i>948</i>		<i>948</i>	<i>114</i>	<i>834</i>				
<i>Foy Henry</i>	<i>2991</i>	<i>1330</i>	<i>J Phillips</i>	<i>Scoto River</i>	<i>100</i>		<i>50</i>		<i>30</i>		<i>180</i>	<i>22</i>	<i>3960</i>	<i>1000</i>		<i>5160</i>		<i>5160</i>	<i>619</i>	<i>4541</i>				
<i>Fredrick Jacob</i>	<i>2991</i>	<i>1330</i>	<i>J Phillips</i>	<i>Scoto River</i>	<i>60</i>		<i>25</i>		<i>23 1/2</i>		<i>108 1/2</i>	<i>22</i>	<i>2381</i>			<i>2381</i>		<i>2381</i>	<i>286</i>	<i>2095</i>				
	<i>5261</i>	<i>466 1/2</i>	<i>H Bedinger</i>	<i>✓</i>	<i>20</i>		<i>20</i>		<i>15</i>		<i>45</i>	<i>22</i>	<i>990</i>			<i>990</i>		<i>990</i>	<i>119</i>	<i>871</i>				
<i>Fleek John</i>	<i>5766</i>	<i>200</i>	<i>R Means</i>	<i>Darbycrnk</i>	<i>50</i>		<i>60</i>		<i>43</i>		<i>153</i>	<i>28</i>	<i>4284</i>	<i>300</i>		<i>4884</i>		<i>4884</i>	<i>586</i>	<i>4298</i>				
<i>Fleek Frederick B</i>	<i>5766</i>	<i>200</i>	<i>R Means</i>	<i>Darbycrnk</i>	<i>30</i>		<i>20</i>		<i>15</i>		<i>65</i>	<i>24</i>	<i>1560</i>			<i>1560</i>		<i>1560</i>						
	<i>4736</i>	<i>417</i>	<i>J Galloway</i>	<i>✓</i>			<i>1 1/2</i>				<i>1 1/2</i>	<i>24</i>	<i>30</i>			<i>30</i>		<i>30</i>	<i>7</i>	<i>27</i>				
					<i>664 3/4</i>		<i>408 1/4</i>		<i>436 1/4</i>		<i>1509</i>		<i>38048</i>	<i>2800</i>		<i>1300</i>	<i>42148</i>		<i>42148</i>	<i>5058</i>	<i>37090</i>			

Assessment of Real Property in *Jennett* Township,

Union County, Ohio, for the Year 1870.

For Plats of all Lands described on this Page, see Page _____ of Plats.	DESCRIPTION OF PROPERTY.				No. of Acres of Land Classified.						Whole No. of Acres.	Value per Acre, including Buildings.	Total Value of Lands, excluding Buildings.	Value of all Buildings.			Total Value of Lands and Buildings.	Amount Added or Deducted by Co. Board of Equalization.		Total Value as Equalized by Co. Board.	Amount Added or Deducted by State Board of Equalization.		Total Value as Equalized by State Board.	REMARKS.
	In Whose Name Assessed.	No. of Entry.	Orig'l Quantity.	ORIGINAL PROPRIETOR.	WATER COURSE.	Arable & Plow Land.	Meadow & Pasture Land.	Uncultiv'd & Wood Land.	Acres.	H.				Acres.	H.	Acres.		H.	Houses.		Mills.	Other Buildings.		
✓	Proy William	5234	600	R White	Scoto River	10	20	20					50	25	1250			1250			1250	150	1100	
✓	✓	3005	666	P Talbot	✓	10	30	17					57	25	1425			1425			1425	171	1254	
✓	✓	5261	466	H Bedinger	✓	20	20	60					100	21	2100			2100			2100	252	1848	
✓	✓	3475	400	R Woodcock	Darbycreek	20	20	22					62	24	1488			1488			1488	178	1310	
✓	✓	3244	200	W Annis	Scoto River	25	30	40					95 1/4	27	2571	300		2871			2871	344	2527	
	Fredrick Isaac M	5261	466	H Bedinger	Scoto River	25	5	15					45	22	990			990			990	119	871	
	Graham R. J	3686	1000	L Sullivant	Darbycreek	65		10					75	30	2250			2250			2250	270	1980	
✓	✓	7758	168	Graham W Senggs	✓		9	3/4					9 3/4	35	340			340			340	41	299	
✓	✓	3484	800	✓	✓			53					53	28	1484			1484			1484	178	1306	
✓	✓	7390	45	J. Graham	✓	21							21	35	735			735			735	88	647	
✓	✓	12125	63	L Whitehead	✓		7	20					27	33	891	200		1091			1091	131	960	
	Graham Ralph R	5734	533	J. Birds	✓	30	50	27					117 1/4	21	2462	200		2662			2662	319	2343	
	Guy Wilkinson	7830	168	Graham W Senggs	Darbycreek		1	3/4					1 1/2	35	52			52			52	6	46	
	Gray John W	7390	168	Graham W Senggs	Darbycreek	4							4 3/4	35	165			165			165	20	145	
✓	✓	7830	✓	✓	✓	15	10	15					43	35	1505	200	100	1805			1805	217	1588	
✓	✓	3484	800	L Sullivant	✓	30	11	10					57 1/4	32	1656			1656			1656	199	1457	
	Galloway James H	5766	200	R Meaus	Darbycreek	152		400					55	18	9936			9936			9936	1192	8744	X
	Jell Jessie	5732	600	J. Galloway	Darbycreek	100	40	54					194	33	6402	200		7102			7102	862	6240	
	Gordon Charles H	3452	350	W Barndale	Scoto River	30	20	8					48 1/4	28	1351		200	1551			1551	186	1365	
✓	✓	6420	436	W Barlow	✓	10	6	12					28	28	784			784			784	94	690	
	Guy James	7757	447	W Saur	Darbycreek		20	10					30	30	900			900			900	108	792	
✓	✓	7758	168	Graham W Senggs	✓		5	6					11	30	330			330			330	40	290	
✓	✓	6954	836	A. J. Dixon	Scoto Riv		46						46	25	1150			1150			1150	138	1012	
✓	✓	7074	830	J Crawford	✓	40	30	100					170	23	3910			3910			3910	469	3441	
	Gran William	5726	470	A Kerr	Darbycreek	1	1						2	50	100			100			100	12	88	
	Grubb Cynthia	2305	846	Parker & Coxham	Darbycreek			1/2					1/2	30	15			15			15	2	13	
	Gran O	2005	666	P Talbot	Scoto River	60	15	30					108 1/4	22	2375			2375			2375	278	2037	
	Gary Joseph L	5726	470	A Kerr	Darbycreek	25	10	11					52	20	1040			1040			1040	125	915	
						683 1/4	407 1/2	960 1/4					2062 1/4		49597	1600	300	57497			57497	6179	46318	

Assessment of Real Property in *Jennett* Township,

Union County, Ohio, for the Year 1870.

For Plats of all Lands described on this Page, see Page _____ of Plats.	DESCRIPTION OF PROPERTY.				No. of Acres of Land Classified.				Whole No. of Acres.	Value per Acre, including buildings.	Total Value of Lands, excluding Buildings.	Value of all Buildings.			Total Value of Lands and Buildings.	Amount Added or Deducted by Co. Board of Equalization.		Total Value as Equalized by Co. Board.	Amount Added or Deducted by State Board of Equalization.		Total Value as Equalized by State Board.	REMARKS.			
	In whose Name Assessed.	No. of Entry.	Orig'l Quantity.	ORIGINAL PROPRIETOR.	WATER COURSE.	Arable & Plow Land.	Meadow & Pasture Land.	Uncultiv'd & Wood Land.				Acres.	H.	Acres.		H.	Acres.		H.	Houses.			Mills.	Other Buildings.	Dollars.
Hill Robert Jr	2005	666	P Lalloh	Scoto River	100	50	62			212	24	5053	700				5788			5788			695	5093	
Hill Robert Jr	2365		W Annis			30	14			44	22	968					968			968			116	852	X
Hill Robert Sr	2990	666	J Phillips	Scoto River	10	5	5 1/4			20 1/4	22	445					445			445			53	392	Not Found
Hill Isreal	2990	666	J Phillips	Scoto River	50	12	15 3/4			77 3/4	22	1710					1710			1710			205	1505	
Hammott E C	2005	666	P Lalloh	Scoto River	45	15	10			70	23	1610					1610			1610			193	1417	
Hudson Henry	6595	277	Jt Parker	Scoto River	20		5			25	28	700	200				900			900			108	792	
Hensil George	3003	124	W Creggan	Scoto River	20	15	11 1/2			46 1/2	25	1162					1162			1162			140	1022	
Hensil Henry							1/2			1/2		15					15			15			2	13	
Harrington Nathaniel	5224	600	Robert White	Scoto River	45	25	45 3/4			145 3/4	28	4067					4067			4067			438	3679	
Hill Solomon	2365	666		Scoto River		15	9			24	22	528					528			528			63	465	
Hobek A J	5261	466	H Beadinger	Scoto River	35	15	41			91	24	2184		300			2484			2484			298	2196	
Houser J M	5166	200	R Means	Darbycreek	20	4 1/4				24 1/4	25	600					600			600			73	533	
Hoyland Seth	2991	1320	J Phillips	Scoto River	1					1	50	50	300		200		550			550			66	484	
Hoyland S J	2991	1320	J Phillips	Scoto River	1 1/2					1 1/2	32	40					40			40			5	35	
Hall Lewi	5211	360	T M Bailey	Darbycreek	2 3/4					2 3/4	25	68					68			68			8	60	
Hamer Albert	775-8 7830	168	Jaham & Sons	Darbycreek			1/2			1/2	45	22					22			22			3	19	
Hamer John	5166 5166	200 1000	R Means	Darbycreek	20	10	5			35	22	770					770			770			92	678	
Houser Jacob F	419	1200	W Brown	Darbycreek	15		10			25	25	625					625			625			75	550	
Hill Stephen	2367	666	Jt Parker	Scoto River			31			31	21	651					651			651			78	673	
Hobert Lucinda	2991	1320	J Phillips	Scoto River						7 1/2															In A Sherwoods Tract
Hudson Richard	6420	436	W Barlow	Scoto River	20	7	6 1/2			33 1/2	22	737					737			737			88	649	
Hudson Henry	6595	277	A Kerr	Scoto River		8				8	28	224					224			224			27	197	
Hutchinson Jacob	5724	295	John Bair	Darbycreek	150	40	81			211	27	7357	600				7917			7917			950	6967	
Harris William H	3014	199	H Gillman	Scoto River	5		5			10	21	210					210			210			25	185	
					590	251 3/4	372 1/2			147 1/2		3024	1800		500	3242 1/2	3242 1/2			3242 1/2			3890	2853 1/2	

Assessment of Real Property in *Jennett* Township,

Union County, Ohio, for the Year 1870.

For Plats of all Lands described on this Page, see Page _____ of Plats.	DESCRIPTION OF PROPERTY.				No. of Acres of Land Classified.								
	No. of Entry.	Orig'l Quantity.	ORIGINAL PROPRIETOR.	WATER COURSE.	Arable & Plow Land.	Meadow & Pasture Land.	Uncultiv'd & Wood Land.	Acres.	H.	Acres.	H.	Acres.	H.
<i>James Thomas</i>	5238	200	<i>S. Sullivant</i>	<i>Darbycreek</i>	40	20	20						
✓ ✓	10708	44	<i>W. L. Sullivant</i>	"		1 1/4							
✓ ✓	5126	470	<i>A. Kerr</i>	"	100	42 1/2	82	3/4					
✓ ✓	3452	650	<i>W. B. Baskedall</i>	<i>Scots River</i>	50	16	30						
✓ ✓	6420	436	<i>W. B. Barlow</i>	"	10	5	10						
<i>Nyle Dweck</i>	7074	200	<i>J. Crawford</i>	<i>Scots River</i>	6		18						
<i>Nyle James A</i>	7074	200	<i>J. Crawford</i>	<i>Scots River</i>	20		17 1/4						
<i>Kramer Jacob</i>	7074	200	<i>J. Crawford</i>	<i>Scots River</i>	30		20						
<i>Ritch James</i>	9369 10614	149	<i>J. Falloway</i>	<i>Darbycreek</i>	17	10	15						
✓ ✓	3788	420	<i>C. Sullivant</i>	"	14	15	20 1/2						
<i>Kroch John</i>	3754	400	<i>C. Sins</i>	<i>Darbycreek</i>	25	20	4 1/2						
✓ ✓	3686 3754	1000	<i>S. Sullivant</i>	"	5		20 3/4						
<i>Kochler Francis</i>	3754	400	<i>C. Sins</i>	<i>Darbycreek</i>		6 1/2							
✓ ✓	3686 3754	1000	<i>S. Sullivant</i>	"	60	34	60 1/4						
<i>Nyle Robert</i>	3686	1000	<i>S. Sullivant</i>	<i>Darbycreek</i>									
<i>Hilsburg Thompson</i>	3686	1000	<i>S. Sullivant</i>	<i>Darbycreek</i>	45	26	50 1/2						
<i>King William</i>	7830 7758	168	<i>Graham Snypp</i>	<i>Darbycreek</i>		1							
<i>Kochler Joseph John Henry</i>	7830 7758	168	<i>Graham Snypp</i>	<i>Darbycreek</i>	1								
✓ ✓ ✓ ✓	3754	400	<i>C. Sins</i>	"	1								
✓ ✓ ✓ ✓	3686	1000	<i>S. Sullivant</i>	"	1								
<i>Newton Arthur</i>	5417	300	<i>M. Law</i>	<i>Darbycreek</i>	100	13							
✓ ✓	419	1200	<i>W. B. Barlow</i>	"	25	2 1/2	19						
<i>Hammerley G. Pace</i>	3475	400	<i>R. Woodcock</i>	<i>Darbycreek</i>			22						
✓ ✓	5011	360	<i>J. M. Bailey</i>	"	40	25							
<i>Kut Daniel</i>	3743	600	<i>R. Means</i>	<i>Darbycreek</i>	30	20	44						
✓ ✓	5126	400	<i>A. Kerr</i>	"	40	20	38						
<i>Kromer John H</i>	419 5417	1800	<i>W. B. Barlow</i>	<i>Darbycreek</i>	45	2 1/2	28						
✓ ✓ ✓	5417	200	<i>N. Lamm</i>	"	40	20	22						

Whole No. of Acres.	Value per Acre of Land.	Total Value of Lands, excluding Buildings.	Value of all Buildings.			Total Value of Lands and Buildings.	Amount Added or Deducted by Co. Board of Equalization.	Total Value as Equalized by Co. Board.	Amount Added or Deducted by State Board of Equalization.	Total Value as Equalized by State Board.	REMARKS.
			Houses.	Mills.	Other Buildings.						
80	36	2800	400			3200		3200	384	2816	
1 1/4	35	43				43		43	5	38	
307 3/4	30	9232			400	9632		9632	1156	8476	
96	30	2880	300			3180		3180	382	2798	
35	30	1050			200	1250		1250	114	1136	
24	24	576				576		576	69	507	
37 1/4	24	894				894		894	107	787	
50	22	1100				1100		1100	132	968	
42	22	924				924		924	111	813	
49 1/2	22	1089				1089		1089	131	958	
49 1/2	23	1138				1138		1138	136	1002	
28 3/4	23	661				661		661	81	580	
6 1/2	26	169				169		169	20	149	
154 1/4	26	4010	300			4310		4310	578	3732	
14 1/2											In J. Richards' Tract
151 1/2	32	4848	200			5048		5048	605	4443	
1	45	45				45		45	5	40	
1	30	30	4000			4030		4030	491	3539	
1	30	30				30		30	3	27	
1	30	30				30		30	3	27	
113	30	3390	1000		400	4790		4790	575	4215	
67	28	1932				1932		1932	232	1700	
22	23	506				506		506	61	445	
65	24	1560				1560		1560	187	1373	
74	30	2220				2220		2220	338	1882	
78	30	2340				2340		2340	353	2087	
93	30	2790				2790		2790	335	2455	
82	30	2460				2460		2460	295	2165	
775	426 3/4	538 1/2									
1140 1/4		48986	2200	4000	1000	56186		56186	6742	49444	

Assessment of Real Property in *Jennett* Township,

Union County, Ohio, for the Year 1870.

For Plats of all Lands described on this Page, see Page _____ of Plats.	DESCRIPTION OF PROPERTY.			No. of Acres of Land Classified.						REMARKS.		
				Arable & Plow Land.		Meadow & Pasture Land.		Uncultiv'd & Wood Land.				
				Acres	H.	Acres	H.	Acres	H.			
IN WHOSE NAME ASSESSED.	No. of Entry.	Orig'l Quantity.	ORIGINAL PROPRIETOR.	WATER COURSE.		Acres	H.	Acres	H.	Acres	H.	
<i>Lucas Sarah</i>	2991	1320	<i>W Crawford</i>	<i>Scioto River</i>		11				5		
<i>✓ ✓</i>	6581	450	<i>Phillips</i>	<i>✓ ✓</i>				5				
<i>Lattimer Lydia</i>	3452	310	<i>W Barksdale</i>	<i>Scioto River</i>		10	8					
<i>Lattimer Sarah</i>	3452	350	<i>W Barksdale</i>	<i>Scioto River</i>				41		10		
<i>Loggitt John</i>	5611	360	<i>T. M Bailey</i>	<i>Darbycreek</i>		120	40	59				
<i>Laul David C</i>	7073	526	<i>R Walters</i>	<i>Darbycreek</i>		25	10	32				
<i>Loggitt Edmund M Jr</i>	2774	295	<i>John Bair</i>	<i>Darbycreek</i>		20	20	19				
<i>Linderhill Samuel</i>	⁹³⁶⁷ 10614	149	<i>J Gallway</i>	<i>Darbycreek</i>		35	10	12		1/2		
<i>Lamb Henry</i>	6420	200	<i>W Barber</i>	<i>Darbycreek</i>		14	6	13				
<i>Learner George</i>	2991	1320	<i>John Phillips</i>	<i>Scioto River</i>		20	10	9				
<i>✓ ✓</i>	<i>✓ ✓</i>	<i>✓ ✓</i>	<i>✓ ✓</i>	<i>✓ ✓</i>		30	10	12				
<i>Mitchell James R</i>	5132	600	<i>John Rids</i>	<i>Darbycreek</i>		40	20	40				
<i>✓ ✓ ✓</i>	5134	533	<i>J Gallway</i>	<i>✓ ✓</i>		50	22	50				
<i>✓ ✓ ✓</i>	7058	400	<i>John Rids</i>	<i>✓ ✓</i>		20	15	32				
<i>Mitchell Jessie</i>	5731	600	<i>J Gallway</i>	<i>Darbycreek</i>		106	70	100		1/2		
<i>✓ ✓</i>	<i>✓ ✓</i>	<i>✓ ✓</i>	<i>✓ ✓</i>	<i>✓ ✓</i>								
<i>Martin William</i>	7073	526	<i>R G Walters</i>	<i>Darbycreek</i>		30	10	25				
<i>Martin David</i>	7073	526	<i>R G Walters</i>	<i>Darbycreek</i>		32	10	25				
<i>Moss John</i>	3005	666	<i>P Talbot</i>	<i>Scioto River</i>		95	50	50				
						658		351		494		
								7/4				

Whole No. of Acres.	Value per Acre, including Buildings.	Total Value of Lands, excluding Buildings.	Value of all Buildings.			Total Value of Lands and Buildings.	Amount Added or Deducted by Co. Board of Equalization.	Total Value as Equalized by Co. Board.	Amount Added or Deducted by State Board of Equalization.		Total Value as Equalized by State Board.	REMARKS.
			Houses.	Mills.	Other Buildings.				Added Dollars.	Deducted Dollars.		
Acres.	H.	Dollars.	Dollars.	Dollars.	Dollars.	Dollars.	Added Dollars.	Deducted Dollars.	Dollars.	Added Dollars.	Deducted Dollars.	Dollars.
11	20	320				320			320			38 282
5	20	100				100			100			12 88
18	28	504				504			504			61 443
51	28	1428				1428			1428			171 1257
219	24	5256	200		300	5556			5556			691 8065
67	24	1608				1608			1608			193 1415
59	24	1416				1416			1416			170 1246
57 1/2	20	1150				1150			1150			138 1012
33	23	759				759			759			91 668
7 3/4	32	232				232			232			28 204
39	22	858				858			858			103 755
52	22	1144				1144			1144			137 1007
100	26	2600				2600			2600			312 2258
122	30	3660				3660			3660			439 3221
67	24	1608				1608			1608			193 1415
216 1/2	32	8848	600			9448			9448			1134 8314
65	28	1820				1820			1820			218 1602
67	28	1876	100			1976			1976			237 1739
175	25	4375	200		500	4875			4875			657 4818
1509	7 3/4	39730	1100		800	41630			41630			502 336939
		232				232			232			

Assessment of Real Property in *Jerome* Township,

Union County, Ohio, for the Year 1870.

For Plats of all Lands described on this Page, see Page _____ of Plats.	No. of Entry.	Orig'l Quantity.	DESCRIPTION OF PROPERTY.	WATER COURSE.	No. of Acres of Land Classified.					
					Arable & Plow Land.		Meadow & Pasture Land.		Uncultiv'd & Wood Land.	
IN WHOSE NAME ASSESSED.			ORIGINAL PROPRIETOR.		Acres.	H.	Acres.	H.	Acres.	H.
Mooney Jacob	3452	600	P Talbot	Scioto River	40		20		18	$\frac{1}{2}$
Michael Joseph H	6420	436	W Bales	Scioto River	60		20		14	$\frac{1}{2}$
Morris Christian	5166	200	R Means	Darby Creek	10		5		6	$\frac{1}{2}$
M. Ritrick John	5234	600	R White	Darby Creek	50		10		10	
McCampbell Andrew H	5134	533	J Price	Darby Creek	29		90		30	
	5732	600	J Galloway	"			21			
	6310	380	W Pelham	"			30		28	
	6851	450	J Galloway	Scioto River	50		124		40	$\frac{1}{4}$
McCampbell David	5766	200	R Means	Darby Creek					22	
	6581	450	J Galloway	Scioto River	40		30		69	$\frac{3}{4}$
McCampbell John	9736	407	J Galloway	Darby Creek	80		40		49	
McCampbell Alfred	9736	407	J Galloway	Darby Creek	50		30		26	
	10620	37	J Mabury	"	10		20		11	
McCampbell Joseph	5762	800	R Means	Darby Creek					22	
McCampbell Samuel	3754	400	E Simons	Darby Creek	100		100		96	$\frac{1}{2}$
McCullough Samuel	3484	800	L Sullivant	Darby Creek	100		100		125	
	3486	400	"	"	50		20		21	$\frac{1}{4}$
	3754	400	E Simons	"	25		15		10	
Myles Catharine F	5166	1000	R Means	Darby Creek	10					$\frac{1}{4}$
Moore Albert	3014	199	H Gallman	Scioto River	19				10	$\frac{3}{8}$
McCune W N	10718	94	W Sullivant	Darby Creek	15		3		15	
Morrison Joseph	1440	1000	J H Gay	Darby Creek					$\frac{3}{5}$	
McCune John	5733	190	J Galloway	Darby Creek	60		30		35	
McCune John E	5744	50	St. Andrews	"	25				33	
	3358	168	Paham Senffs	"					$\frac{3}{4}$	
McCune Joseph H	3743	600	R Means	Darby Creek	40		20		20	
					424		733		682	

Whole No. of Acres.	Value per Acre, excluding Buildings.	Total Value of Lands, excluding Buildings.	Value of all Buildings.			Total Value of Lands and Buildings.	Amount Added or Deducted by Co. Board of Equalization.		Total Value as Equalized by Co. Board.	Amount Added or Deducted by State Board of Equalization.		Total Value as Equalized by State Board.	REMARKS.	
			Houses.	Mills.	Other Buildings.		Added Dollars.	Deducted Dollars.		Added Dollars.	Deducted Dollars.			
Acres.	H.	Dollars.	Dollars.	Dollars.	Dollars.	Dollars.	Dollars.	Dollars.	Dollars.	Dollars.	Dollars.	Dollars.		
78	$\frac{1}{2}$	30	2353	500	400	3253			3253			391	2864	
94	$\frac{1}{2}$	24	2268			2268			2268			272	1996	
21	$\frac{1}{2}$	20	430			430			430			52	378	
70		21	1470			1470			1470			176	1294	
149		30	4470	500	200	5170			5170			620	4550	
21		30	630			630			630			76	554	
58		22	1276			1276			1276			153	1123	
214	$\frac{1}{4}$	28	5999			5999			5999			720	5279	
189	$\frac{3}{4}$	23	4364	400	200	4964			4964			596	4368	
169		24	4856	300		4356			4356			533	3833	
106		24	2544	400	200	3144			3144			377	2767	
41		22	902			902			902			108	794	
22		24	528			528			528			63	465	
296	$\frac{1}{2}$	24	7116			7116			7116			854	6262	
328		30	9750	500		10550			10550			1266	9284	
91	$\frac{1}{4}$	24	3102			3102			3102			372	2730	
50		23	1150			1150			1150			138	1012	
10	$\frac{1}{4}$	20	205			205			205			25	180	
29	$\frac{3}{4}$	21	624			624			624			75	549	
38		30	1170	200		1370			1370			161	1179	
3		40	24			24			24			3	21	
128		26	3250			3250			3250			390	2860	
58		22	1276			1276			1276			153	1123	
7	$\frac{1}{4}$	45	33			33			33			4	29	
80		28	2240			2240			2240			269	1971	
					2339	$\frac{1}{2}$	61202	3100	1000	65302		63302	7437	5465

Assessment of Real Property in *Jennu* Township,

Union County, Ohio, for the Year 1870.

For Plats of all Lands described on this Page, see Page _____ of Plats.	DESCRIPTION OF PROPERTY.				No. of Acres of Land Classified.				Whole No. of Acres.	Value per Acre of Land.	Total Value of Lands, excluding Buildings.	Value of all Buildings.			Total Value of Lands and Buildings.	Amount Added or Deducted by Co. Board of Equalization.		Total Value as Equalized by Co. Board.	Amount Added or Deducted by State Board of Equalization.		Total Value as Equalized by State Board.	REMARKS.
	No. of Entry.	Orig'l Quantity.	ORIGINAL PROPRIETOR.	WATER COURSE.	Arable & Plow Land.	Meadow & Pasture Land.	Uncultiv'd & Wood Land.	Acres.				H.	Acres.	H.		Acres.	H.		Houses.	Mills.		
McComber Jeremiah	2990	666	John Phillip	Scoto River	40	10	30	80	20	1600						1600		1600	192	1408		
McDowell John R	5234	600	R White	Scoto River	75	50	25	150	28	4200	600		600	5400		5400		5400	448	4752		
✓ ✓ ✓	3244	200	✓ ✓	✓ ✓			32	32	24	768				768		768		768	92	676		
✓ ✓ ✓	5211	360	F.M. Bailey	✓ ✓	40	30	11	81	24	1944				1944		1944		1944	233	1711		
McCreey William	2935	666	Becky Ray	Scoto River	100	87	150	337	27	9099	500		300	9899		9899		9899	1188	8711		
								36		772						772						
McNittick Arthur J	6595	277	Thos Faulke	Scoto River	15	5 1/2		20 1/2	25	512				512		512		512	61	451		
McGill William	3244	200	Thomas	Scoto River	60	25	15	100	26	2600				2600		2600		2600	312	2288		
McNittick William	3475	400	R Woodcock	Scoto River	50	23	30	103	28	2884	300			3184		3184		3184	382	2502		
McNittick Harvey	6586	450	Thos Parker	Scoto River	90	40	70	200	21	4200				4200		4200		4200	524	3676		
McCallagh John T	3686	1000	L Sullivant	Scoto River	5			5	35	175		200		375		375		375	45	330		
McDowell J. P	5234	600	R White	Darby Creek	11 1/2			11 1/2	24	276				276		276		276	38	238		
✓ ✓	2991	1330	J. Phillip	Scoto River	1/2			1/2	24	12				12		12		12	2	10		
Storrs John G & Robert	5261	466 1/2	R Means	Scoto River	30	10	20	60	21	1260				1260		1260		1260	157	1109		
Storrs Robert	5261	466 1/2	R Means	Scoto River	10	10	10	30	21	630				630		630		630	76	554		
Sturman Zachariah	3686	1000	L Sullivant	Darby Creek	60	13	30	103	30	3090				3090		3090		3090	372	2718		
Sturman John	1440	1000	J Lowry	Darby Creek	80	40	70 3/4	190 3/4	28	5341	900		400	6641		6641		6641	797	5844		
Stick Philip	1440	1000	J Lowry	Darby Creek	1			1	30	30				30		30		30	4	26		
Stull Samuel	2991	1330	Jos Phillip	Scoto River	39	10	20 1/2	69 1/2	27	1829				1829		1829		1829	183	1346		
					707	363 1/2	514 1/4	1574 3/4		40150	2300		1500	43950		43950		43950	5275	38675		

65

Assessment of Real Property in *Jessie* Township,

Union County, Ohio, for the Year 1870.

For Plats of all Lands described on this Page, see Page _____ of Plats.	DESCRIPTION OF PROPERTY.				No. of Acres of Land Classified.						Whole No. of Acres.	Value per Acre of Building.	Total Value of Lands, excluding Buildings.	Value of all Buildings.			Total Value of Lands and Buildings.	Amount Added or Deducted by Co. Board of Equalization.		Total Value as Equalized by Co. Board.	Amount Added or Deducted by State Board of Equalization.		Total Value as Equalized by State Board.	REMARKS.			
					Arable & Plow Land.	Meadow & Pasture Land.	Uncultiv'd & Wood Land.	Acres.	H.	Acres.				H.	Acres.	H.		Houses.	Mills.		Other Buildings.	Added Dollars.			Deducted Dollars.	Added Dollars.	Deducted Dollars.
<i>Oliver Francis</i>	5166	200	<i>R Means</i>	<i>Darbycreek</i>	5				5	$\frac{3}{4}$			10	$\frac{3}{4}$	20	215				215			215		26	159	
<i>Oliver James</i>	5166	200	<i>R Means</i>	<i>Darbycreek</i>	5		5		5				15		20	300				300			300		26	264	
<i>Oliver Joseph</i>	3686	1000	<i>L Sullivant</i>	<i>Darbycreek</i>	35		15		47	$\frac{3}{4}$			97	$\frac{3}{4}$	35	3421				3421			3421		411	3016	
	3484	200			65		20						80		35	2975	500			3475			3475		419	3056	
<i>Patterson Alexander</i>	2991	1320	<i>Jos Phillips</i>	<i>Scoto Run</i>	35		20		20				75		21	1575				1575			1575		186	1359	
<i>Preston John H</i>	6595	277	<i>Thos Parker</i>	<i>Scoto Run</i>	30		20		29	$\frac{3}{4}$			79	$\frac{3}{4}$	30	2392	200			2592			2592		312	2256	
<i>Pateh Hannah</i>	9367	149	<i>J Galloway</i>	<i>Darbycreek</i>	30		20		26	$\frac{3}{4}$			76	$\frac{3}{4}$	22	1688				1688			1688		203	1486	
<i>Parrott Alfred</i>	5011	360	<i>J M Bailey</i>	<i>Scoto Run</i>	20		10		20				50		29	1100				1100			1100		132	968	
	3015	666	<i>P Talbot</i>						25	$\frac{3}{4}$			25	$\frac{3}{4}$	20	515				515			515		62	453	
<i>Pickett Barton D</i>	2991	1320	<i>Jos Phillips</i>	<i>Scoto Run</i>	20		20		10				50		22	1100				1100			1100		132	968	
<i>Pickett Joseph D</i>	2991	1320	<i>Jos Phillips</i>	<i>Scoto Run</i>	20		10						30		22	660				660			660		79	581	
<i>Ritchard Joz H</i>	7758	168	<i>Graham W Sengs</i>	<i>Darbycreek</i>	1		2						3		45	135				135			135		16	119	
<i>Rhuleu John</i>	5126	420	<i>A Kerr</i>	<i>Darbycreek</i>	60		32		25				117		28	3276	400	250		3926			3926		471	3455	
<i>Robinson John</i>	6424	436	<i>W Barlow</i>	<i>Scoto Run</i>	20		20		11				51		28	1428				1428			1428		171	1257	
	6748	585	<i>John Anderson</i>		20		10		10				40		28	1120				1120			1120		134	956	
<i>Richard Joseph M</i>	10708	94	<i>J Galloway</i>	<i>Darbycreek</i>	40				32				42		32	1344				1344			1344		161	1183	
	7209	38	<i>W S Sullivant</i>		30		13						43		32	1376				1376			1376		165	1211	
	3686	1000	<i>L Sullivant</i>		20		20		20				60		30	1800				1800			1800		216	1584	
	5832	200			50		25		42				117		35	4095	500	300		4895			4895		587	4308	
	3686	1000	<i>L Sullivant</i>		43				20				63		30	1890				1890			1890		237	1663	
	3686	1000			20		8		10	$\frac{3}{4}$			38	$\frac{3}{4}$	30	1162				1162			1162		189	1023	
<i>Robinson John Jr</i>	3750	100	<i>Thos Sneed</i>	<i>Darbycreek</i>	10		60		38	$\frac{3}{4}$			108	$\frac{3}{4}$	20	2175				2175			2175		261	1914	
<i>Ryan Patrick</i>	2991	1320	<i>John Phillips</i>	<i>Scoto Run</i>	50		20		20				90		22	1980				1980			1980		238	1742	
					599		350		420	$\frac{3}{4}$			1369	$\frac{3}{4}$		37722	1600	550		39872			39872		4752	35708	

For Plots of all Lands described on this Page, see Page ___ of Plats.	DESCRIPTION OF PROPERTY.				No. of Acres of Land Classified.				Whole No. of Acres.	Value per Acre excluding Buildings.	Total Value of Lands, excluding Buildings.	Value of all Buildings.			Total Value of Lands and Buildings.	Amount Added or Deducted by Co. Board of Equalization.		Total Value as Equalized by Co. Board.	Amount Added or Deducted by State Board of Equalization.		Total Value as Equalized by State Board.	REMARKS.
					Arable & Plow Land.	Meadow & Pasture Land.	Uncultiv'd & Wood Land.	Acres.				H.	Acres.	H.		Acres.	H.		Houses.	Mills.		
Robinson James	3475	400	R. Woodcock	Scioto Riv	15		49	1/2		134 1/2	28	3786		200	3686			3686	442	3244	X	
Whelan John J	5166	2000	R. Means	Darbycreek	40		15		35	90	22	1980	200	200	2380			2380	286	2094		
Reed Henry G, B	6420	426	W. Barlow	Scioto Riv	8		3/4			8 3/4	24	198			198			198	24	174		
Robinson James D	5166	2000	R. Means	Darbycreek	40		40		41	X 121 1/2	22	2662		300	2962			2962	355	2607	Should be 131 1/2 acres X	
Rubley Saw J	6310	288	W. Pelham	Darbycreek	100		40		42	182	24	4368	400	200	4968			4968	596	4372		
Sweeney J	5162	800		Scioto River			7			7	25	175			175			175	21	154		
Smith J. A. Gad	477			Darbycreek					111	711	18	12798			12798			12798	1536	11262		
Smart John	3014	199	R. Gullman	Scioto Riv	20		10		13	43	21	903			903			903	108	795		
	2991	1330	J. Phillips				5			5	21	105			105			105	13	92		
	2003	840	Park & Creghan						3 3/4	13 3/4	21	288			288			288	35	253		
Smith Paul	3014	199	R. Gullman	Scioto Riv			5			5	21	105			105			105	13	92		
	2925	666	B. Ray		30		20		20	80	21	1470			1470			1470	176	1294		
Stow Joseph	2925	666	B. Ray	Scioto Riv	10		5			15	22	330	200		530			530	64	466		
Stote Peter	6748	585	J. Audeman	Scioto Riv	10		12			22	25	550			550			550	66	484		
Sherwood Andrew D	2991	1330	J. Phillips	Scioto Riv	25		50		19	94	24	2256			2256			2256	271	1985		
Smart John B	2991	1330	J. Phillips	Scioto Riv	25		25		16	66	24	1584			1584			1584	190	1394		
Sevil Martin	3452	350	J		30		20		13 3/4	23 3/4	28	1785	200		1985			1985	238	1747		
Sherwood Jennie	2758	168	Graham & Sengs	Darbycreek						1/2	45	22			22			22	3	19		
South S. C	2991	1330	J. Phillips	Scioto Riv	1					1	30	30			30			30	4	26		
Scott James L	5261	466 1/2	H. Benedict	Scioto Riv	30		10		10 1/2	50 1/2	22	1111			1111			1111	134	977		
Staley Martin	7074	880	J. Crawford	Scioto Riv																		
					454 3/4		301 1/2		930										457 1/2	335 3/4		

For Plats of all Lands described on this Page, see Page _____ of Plats.	DESCRIPTION OF PROPERTY.				No. of Acres of Land Classified.						Whole No. of Acres.	Value per Acre of Buildings.	Total Value of Lands, excluding Buildings.	Value of all Buildings.			Total Value of Lands and Buildings.	Amount Added or Deducted by Co. Board of Equalization.		Total Value as Equalized by Co. Board.	Amount Added or Deducted by State Board of Equalization.		Total Value as Equalized by State Board.	REMARKS.
					Arable & Plow Land.		Meadow & Pasture Land.		Uncultiv'd & Wood Land.					Houses.	Mills.	Other Buildings.		Added Dollars.	Deducted Dollars.		Added Dollars.	Deducted Dollars.		
					Acres.	H.	Acres.	H.	Acres.	H.				Dollars.	Dollars.	Dollars.		Dollars.	Dollars.		Dollars.	Dollars.		
Taylor William H	5766	300	R Means	Darbycreek	75	75	43				223	26	5798	500			6298			6298	256	5542		
Taylor David E & Ben	3686	1000	L Sullivant	Darbycreek	50	50	50				150	30	4500	300	100		4900			4900	588	4312		
Taylor W M	3685	666	L Sullivant	Darbycreek	40	10	10				60	30	1800	400	100		2300			2300	276	2024		
Taylor Samuel	3685	666	L Sullivant	Darbycreek	10	15	40				65	28	1820				1820			1820	219	1602		
✓ ✓	5767	200	Galloway & Co	✓ ✓	20	30	78				128	25	3200				3200			3200	386	2814		
✓ ✓	3473	600	R Means	✓ ✓			41				47	24	1128				1128			1128	135	993		
Taylor Stephen	3685	666	L Sullivant	Darbycreek	25	20	31 3/4				76 3/4	30	2302		200		2502			2502	200	2202		
✓ ✓	3473	600	R Means	✓ ✓			47				47	24	1028				1028			1028	123	905		
Thompson William	9726	407	J Galloway	Darbycreek	25	35	18 1/2				78 1/2	24	1891	300			2191			2191	263	1928		
✓ ✓	1440	1000	J Galloway	✓ ✓	20	60	31 3/4				111 3/4	23	2370				2370			2370	284	2086		
Uard Sardinus	5743	100	T Doren	Darbycreek	80	20	23 1/2				123 1/2	22	2717				2717			2717	326	2391		
✓ ✓	3743	600	R Means	✓ ✓	25	10	10				45	25	1125	200			1325			1325	159	1166		
Weldon Jenn Martha	6420	436	W Barlow	Scoto River	40	12	10				62	28	1736				1736			1736	208	1528		
Wiley Asa	7074	800	H Crawford	Scoto River	80	20	43				193	24	4632				4632			4632	556	4076		
Wagner William	7074	800	H Crawford	Scoto River	35	15	30				80	24	1920				1920			1920	230	1690		
Warner Elijah	7074	800	H Crawford	Scoto River	5	5					10	25	250	300			550			550	66	484		
✓ ✓	7073	526	Thos Parker	Darbycreek	25	35	30				80	25	2000				2000			2000	240	1760		
Warner Isaac H	7073	526	Thos Parker	Darbycreek	15	10	11				36	23	828				828			828	99	729		
					570	412	634 3/4				1616 3/4		41045	2000	400		43445			43445	5213	38232		

For Plats of all Lands described on this Page, see Page _____ of Plats.	DESCRIPTION OF PROPERTY.				No. of Acres of Land Classified,						
					Arable & Plow Land.		Meadow & Pasture Land.		Uncultiv'd & Wood Land.		
					Acres	H.	Acres	H.	Acres	H.	
IN WHOSE NAME ASSESSED.	No. of Entry.	Orig'l Quantity.	ORIGINAL PROPRIETOR.	WATER COURSE.		Acres	H.	Acres	H.	Acres	H.
District Sut School	6596	277	R. Means	Darby creek							
✓ ✓ 1											
✓ ✓ 2	6595	277	The Parker	Scioto River							
✓ ✓ 3	2362 2903	277	Parker & Longhouse	Scioto River							
✓ ✓ 4	5234	600	R. White	Darby creek							
✓ ✓ 5	9736	407	J. Galloway	Darby creek							
✓ ✓ 6	5411	300		Darby creek							
✓ ✓ 7	14367	144	J. Galloway	Darby creek							
✓ ✓ 8	5238	200	L. Sullivan	Darby creek							
✓ ✓ 9	5121										
✓ ✓ 10	2365	600		Scioto River							
✓ ✓ 11											
Frankfort Church	M. E.		Churches	lot No 32							
Frankfort Congregational	C. H.										
Frankfort Christian	C. H.										
New California Church	W. P.										
Frankfort Graveyard			Grave yards								
New California Graveyard											
			Regs	1	623	232 3/4	457 3/4				
				2	759	412 1/2	663 1/2				
				3	707	202 1/2	799				
				4	664 1/2	408 1/4	436 1/4				
				5	683 3/4	407 3/4	960 3/4				
				6	590 1/4	257 3/4	372 1/2				
				7	775	426 3/4	538 1/2				
				8	658	364 1/4	494				
				9	924 1/2	733	682				
				10	707	353 1/2	514 1/4				
				11	599	350	420 1/4				
				12	454 3/4	308 1/2	730				
				13	570	412	634 3/4				
				14	451 1/4	263 1/4	361 1/2				
					9169	5126 3/4	8265				

Whole No. of Acres.	Value per Acre of Buildings.	Total Value of Lands, excluding Buildings.	Value of all Buildings.			Total Value of Lands and Buildings.	Amount Added or Deducted by Co. Board of Equalization.	Total Value as Equalized by Co. Board.	Amount Added or Deducted by State Board of Equalization.	Total Value as Equalized by State Board.	REMARKS.
			Houses.	Mills.	Other Buildings.						
			Dollars.	Dollars.	Dollars.						
1/4		25	600		625						
1/4		25	600		625						
1/4		25	1100		1125						
1/4		25	675		700						
1/4		25	700		725						
1/4		25	700		725						
1/4		25	600		625						
1/4		25	500		525						
1/4		25	500		525					no house	
1/4		225	5975		6200					no house	
1/4		95	800		825						
1/4		25	400		425						
1		50			50						
1		50	600		650						
		150	1800		1950						
1 1/4		150			150						
1		150			150						
		300			300						
13 1/3 1/2		33483	750	500	34733		34733	4168	30565	25.44	
18 3/8		49562	1200	900	51662		51662	6200	45462	27.56	
17 1/10		40870	500		41370		41370	4965	36405		
15 0/9		38048	2800	1300	42148		42148	5058	37090		
20 5/2		49597	1600	300	51497		51497	6179	45318		
12 1/4		30121	1800	500	32421		32421	3890	28531		
17 4/10		48986	2200	4000	56186		56186	6742	49444		
15 1/6		39962	1100	800	41862		41862	5023	36839		
23 3/9		61202	3100	1000	65302		65302	7837	57465		
15 7/4		40150	2300	1500	43950		43950	5278	38672		
13 6/9		37722	1600	550	39872		39872	4782	35090		
16 9/3		36206	1000	900	38106		38106	4578	33528		
16 1/6		41045	2000	400	43445		43445	5213	38232		
10 7/6		27140	500	400	28040		28040	3364	24676	62905	
22 5/60		574094	32450	4000	610594		610594	7327	537267		

Assessment of Lots in the Town of *Frankfort*

Union County, Ohio, for the Year 1870.

For Plats of all Lots described on this Page, see Page _____ of Plats.	DESCRIPTION OF PROPERTY.					Value of Lots. Dollars.	
	IN WHOSE NAME ASSESSED.	ADDITION.	No. of In-Lot.	No. of Out-Lot.	WHAT PART OF LOT.		No. Feet Front.
	<i>Ashbaugh Cyrus</i>		33		<i>all</i>		50
	<i>✓</i>		39		<i>✓</i>		40
	<i>Beach Amos</i>						
	<i>Boake S H</i>		30		<i>W Corner</i>		
	<i>✓</i>		28		<i>all 1/2</i>		40
	<i>✓</i>		6		<i>all 1/40</i>		50
	<i>✓</i>		26		<i>all 1/2</i>		40
	<i>✓</i>		12		<i>"</i>		
	<i>✓</i>		6		<i>1/2 of 1/10</i>		
	<i>✓</i>		6		<i>all 1/2 of 1/10 corner</i>		50
	<i>✓</i>		4		<i>inside</i>		
	<i>✓</i>		8		<i>all</i>		50
	<i>Beach Christian</i>		13		<i>all</i>		50
	<i>✓</i>		15		<i>✓</i>		50
	<i>✓</i>		17		<i>✓</i>		40
	<i>✓</i>		19		<i>✓</i>		40
	<i>Boake S H</i>		12		<i>1/2</i>		
	<i>Beach Amos</i>		26		<i>1/2</i>		
	<i>Collin Josephus</i>		14		<i>all</i>		40
	<i>✓</i>		16		<i>✓</i>		40
	<i>✓</i>		18		<i>✓</i>		30
	<i>✓</i>		20		<i>✓</i>		30
	<i>✓</i>		10		<i>✓</i>		50
	<i>✓</i>		24		<i>✓</i>		40
	<i>✓</i>		22		<i>✓</i>		40
	<i>✓</i>		12		<i>✓</i>		50
	<i>Courtright Plummer</i>		5		<i>all</i>		50
	<i>✓</i>		27		<i>✓</i>		40
	<i>Holland Gabriel H</i>		7		<i>all</i>		50
	<i>✓</i>		25		<i>✓</i>		40
	<i>Robert Alvin</i>		40		<i>all</i>		40
	<i>Hawkins J G</i>		6		<i>N.E. 1/4</i>		
	<i>J. O. O'Fallons</i>		3		<i>Part</i>		
							1040

Value of all Buildings.			Total Value of Lots and Buildings.	Amount Added or Deducted by Co. Board of Equalization.		Total Value as Equalized by Co. Board.	Amount Added or Deducted by State Board of Equalization.		Total Value as Equalized by State Board.	REMARKS.
Houses.	Mills.	Other Buildings.		Added Dollars.	Deducted Dollars.		Added Dollars.	Deducted Dollars.		
			50			50		6	44	
			40			40		5	35	
			40			40		5	35	
		150	200			300		24	176	
			40			40		5	35	
			300			350		42	308	
			300			350		42	308	
			50			50		6	44	<i>All to L Perry grant to Jacob Shind</i>
			50			50		6	44	<i>✓</i>
			40			40		5	35	<i>✓</i>
			40			40		5	35	<i>✓</i>
										<i>all to holders</i>
			40			40		5	35	
			40			40		5	35	
			50			50		6	44	
		150	300			350		42	308	<i>All to H B Duly</i>
			40			40		4	36	<i>✓</i>
			400			450		54	396	
								4	36	
								4	36	
			200			200		24	176	
			1650		200	2990		389	2631	
									2631	
									2631	

Assessment of Lots in the Town of *Pleasant Valley*

Union County, Ohio, for the Year 1870.

For Plats of all Lots described on this Page, see Page _____ of Plats.	DESCRIPTION OF PROPERTY.						Value of Lots.	
	IN WHOSE NAME ASSESSED.	ADDITION.	No. of In-Lot.	No. of Out-Lot.	WHAT PART OF LOT.	No. Feet Front.	No. Feet Depth.	Dollars.
<i>Barlow D W</i>			2		<i>Part</i>			35
<i>✓ ✓ ✓</i>			6		<i>all</i>			60
<i>✓ ✓ ✓</i>			7		<i>Part</i>			20
<i>✓ ✓ ✓</i>			8		<i>Part</i>			20
<i>McCune John E</i>			3		<i>all</i>			100
<i>Mouser E N</i>			5		<i>all</i>			75
<i>Mouser E N</i>			4		<i>all</i>			60
								370

Value of all Buildings.			Total Value of Lots and Buildings.	Amount Added or Deducted by Co. Board of Equalization.		Total Value as Equalized by Co. Board.	Amount Added or Deducted by State Board of Equalization.		Total Value as Equalized by State Board.	REMARKS.
Houses.	Mills.	Other Buildings.		Added Dollars.	Deducted Dollars.		Added Dollars.	Deducted Dollars.		
			35			35		4	31	<i>119</i>
			60			60		7	53	
			20			20		3	17	
			20			20		2	18	<i>all</i>
300			400			400		48	352	
280			275			275		33	242	
			60			60		7	53	
500			890			890		104	786	

**JEROME TP.
UNION COUNTY
1870**