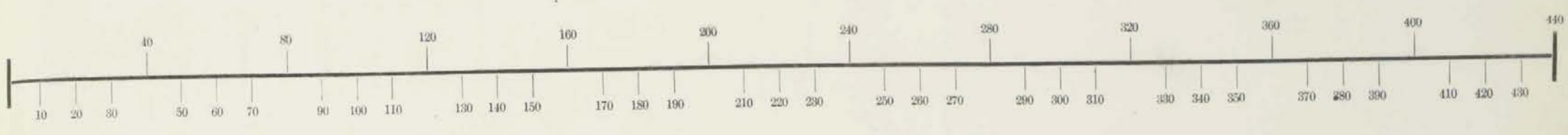


**LIBERTY TP.
UNION COUNTY
1870**

Section, No. _____ Lot _____

Scale, 40 Rods to an Inch, or 10 Rods to 1-4 Inch.

Liberty

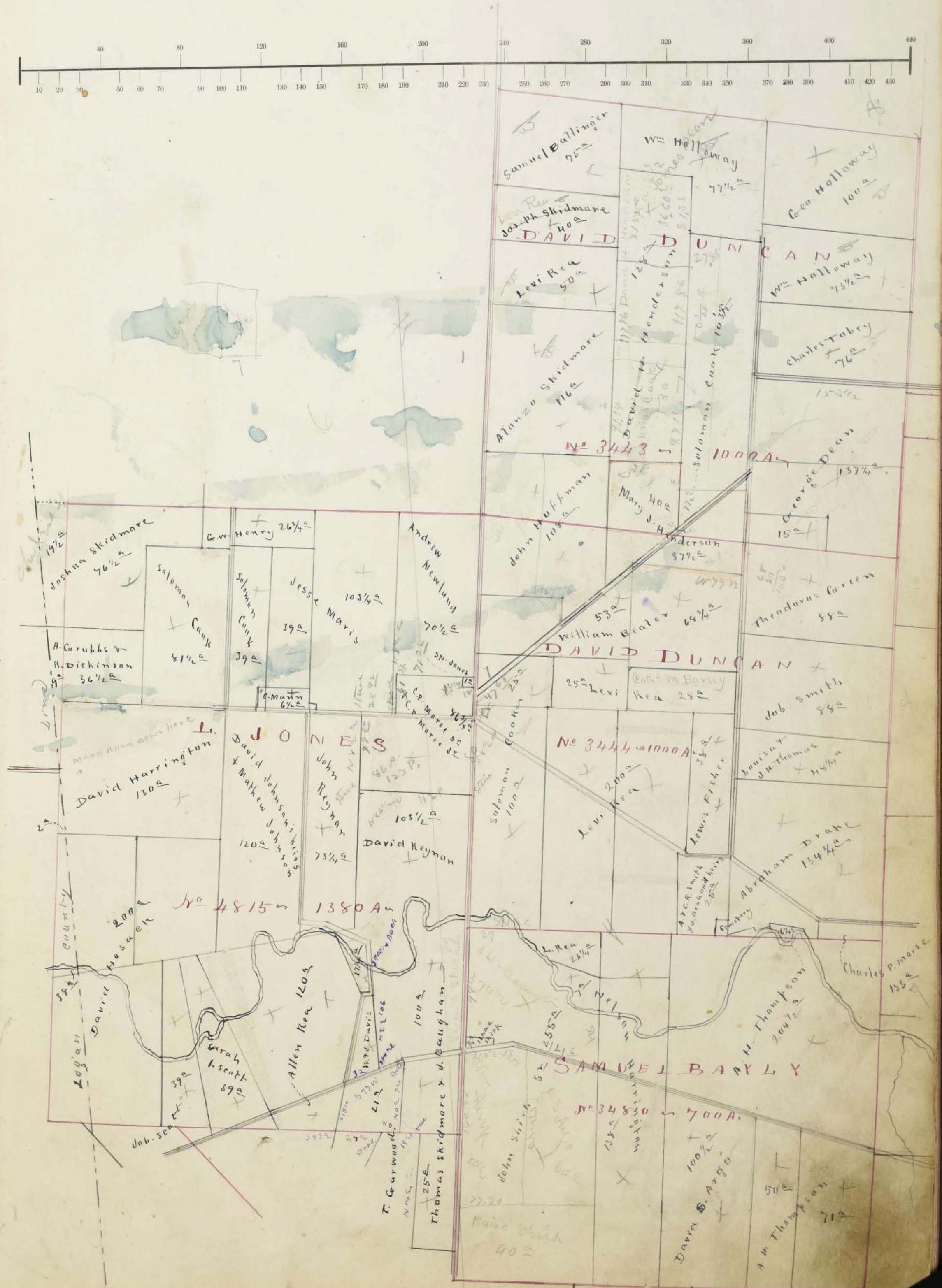
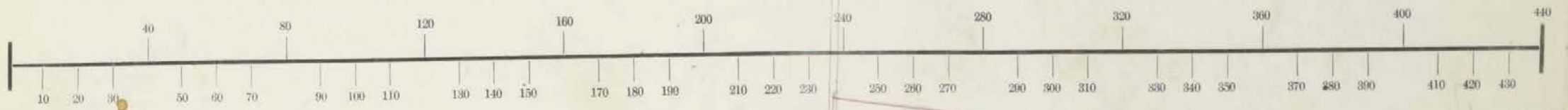


Liberty



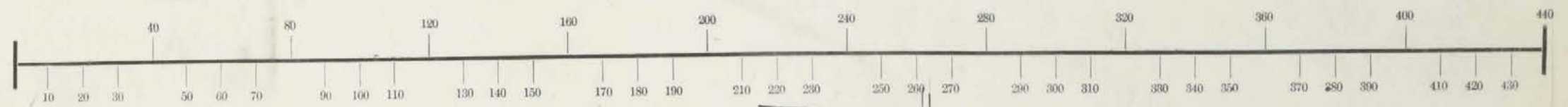
Section, No. Lot

Scale, 40 Rods to an Inch, or 10 Rods to 1-4 Inch.

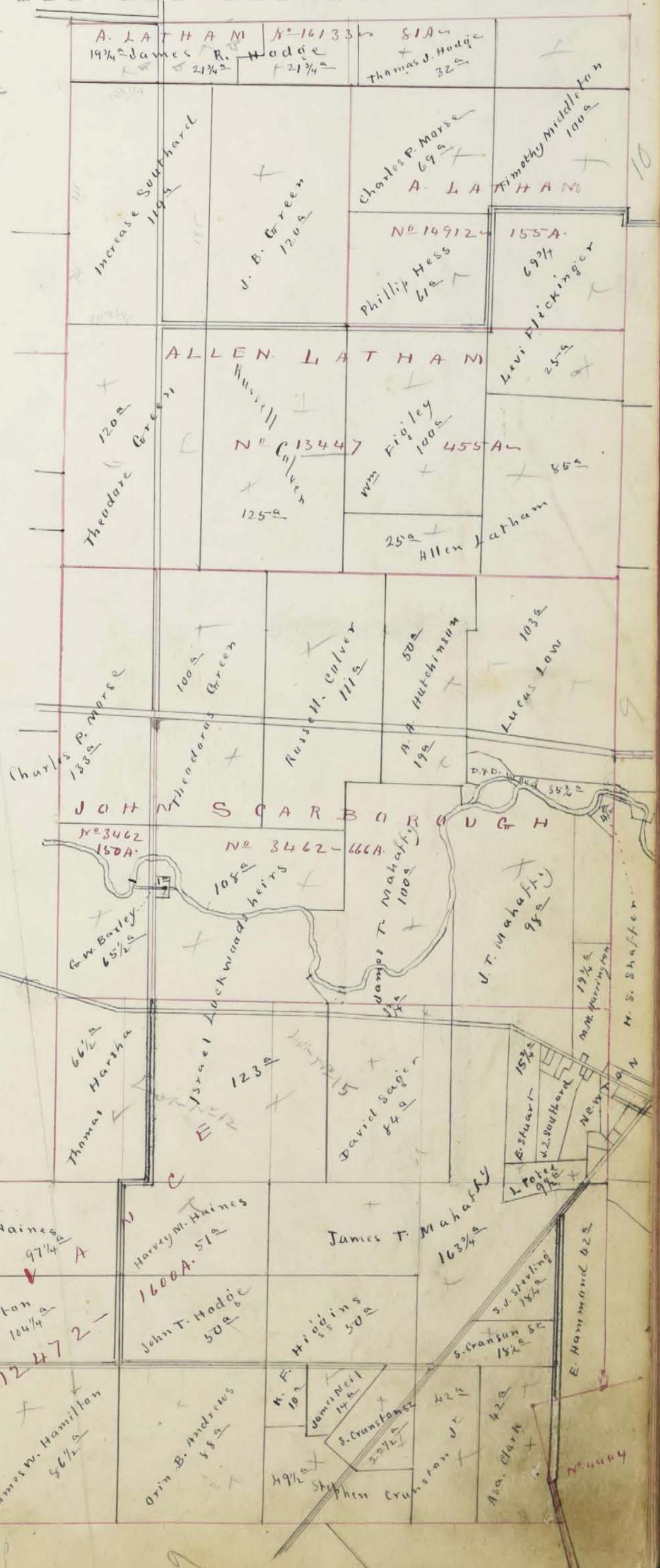


Section, No. Lot

Scale, 40 Rods to an Inch, or 10 Rods to 1-4 Inch.



- ✓ 21-164 T. Cabell to his daughter
- ✓ 20-150 J.R. Cabell to T. Cabell
- ✓ 20-616 " to " article
- ✓ 20-143 S. Cranstin to J. Cabell
- ✓ 23-359 D. Wood to J. Shuck 20 S.
- ✓ 28-23 J. Shuck to S.W. Suddeth 20 S.
- ✓ 20-148 J. Nelson to D. Wood 45 S.

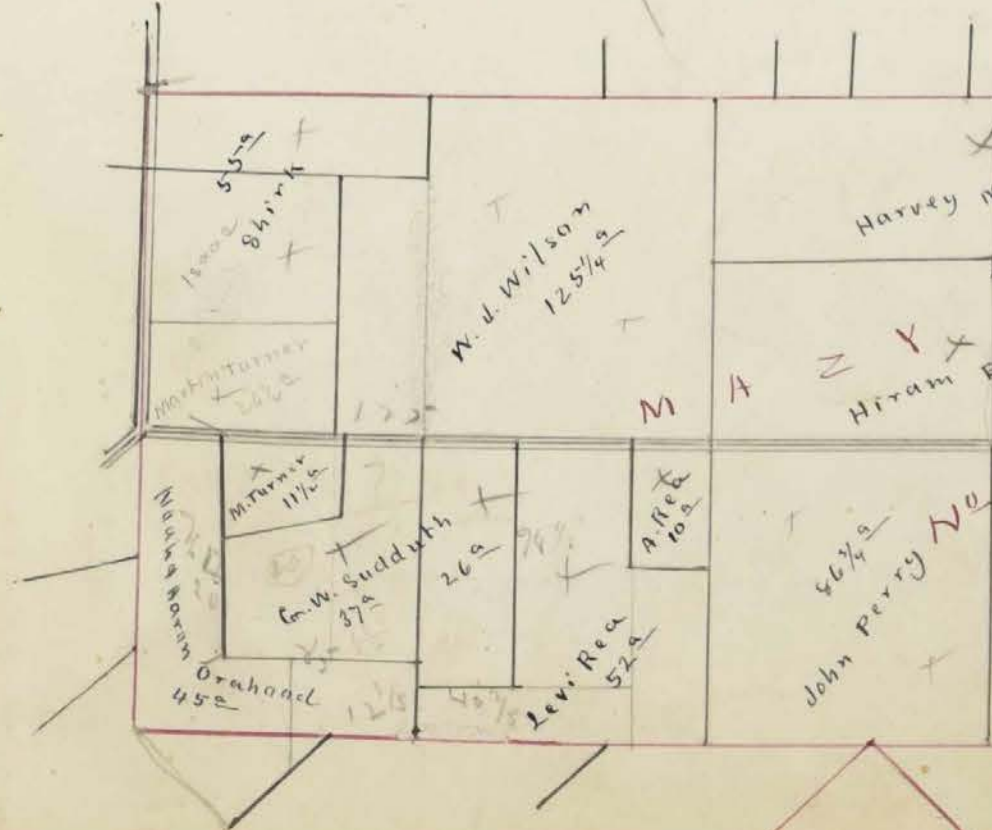


1737
991

139
26
170

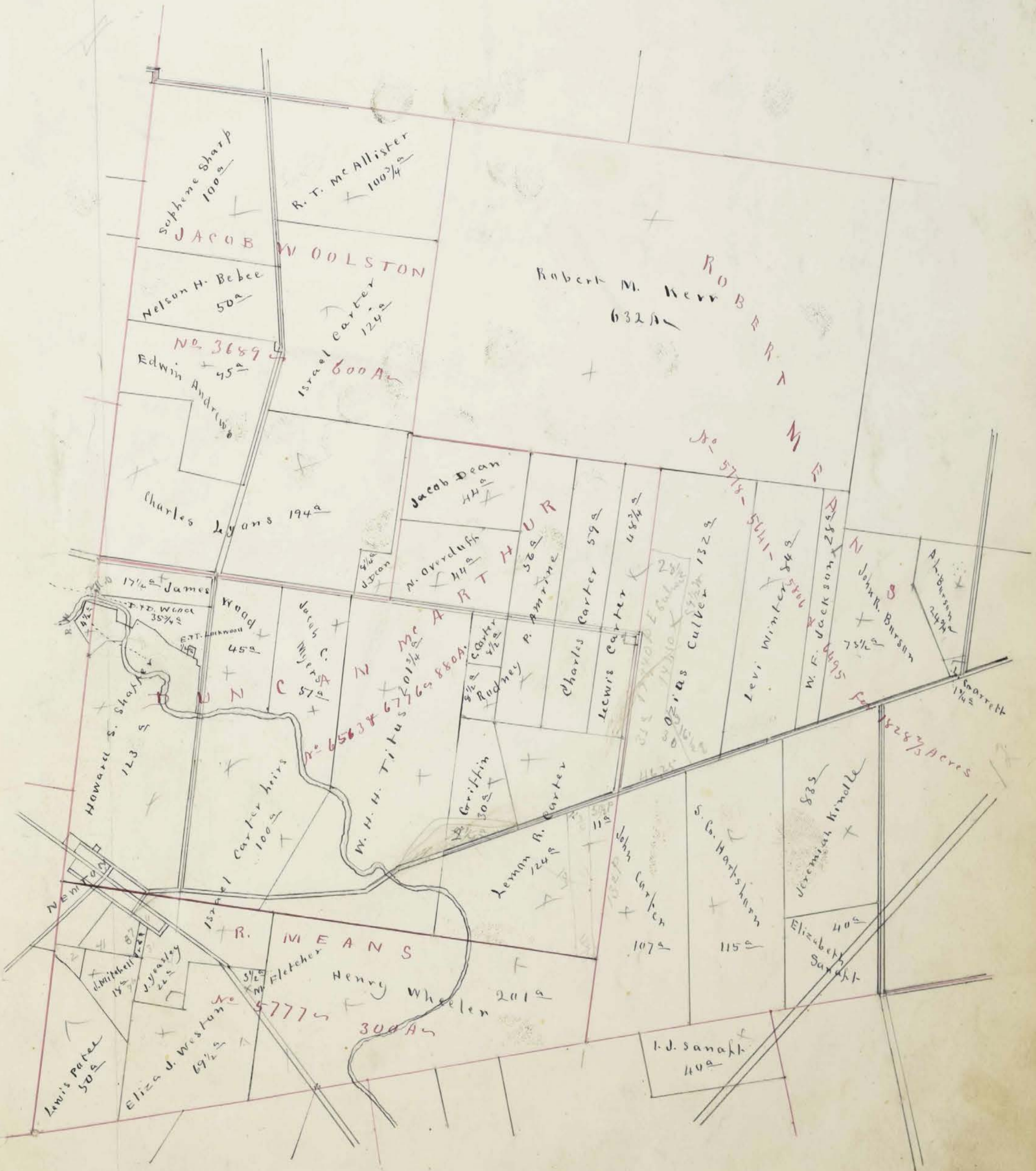
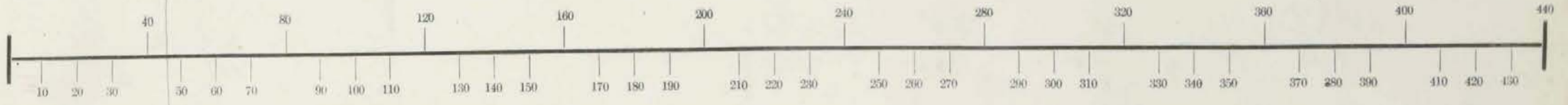
42
14

10 1/2



Section, No. Lot

Scale, 40 Rods to an Inch, or 10 Rods to 1-4 Inch.

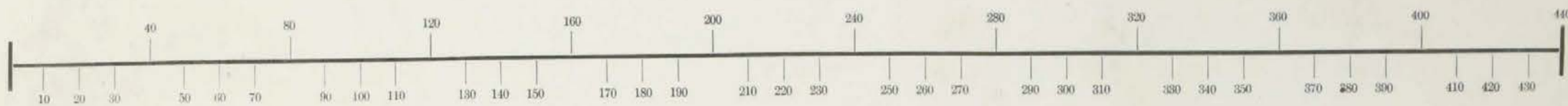


27th Feb 1877

107 1/2

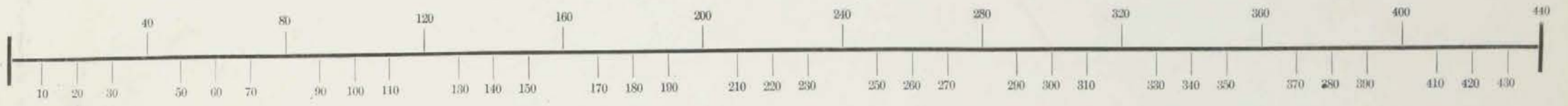
Section, No. _____ Lot _____

Scale, 40 Rods to an Inch, or 10 Rods to 1-4 Inch.



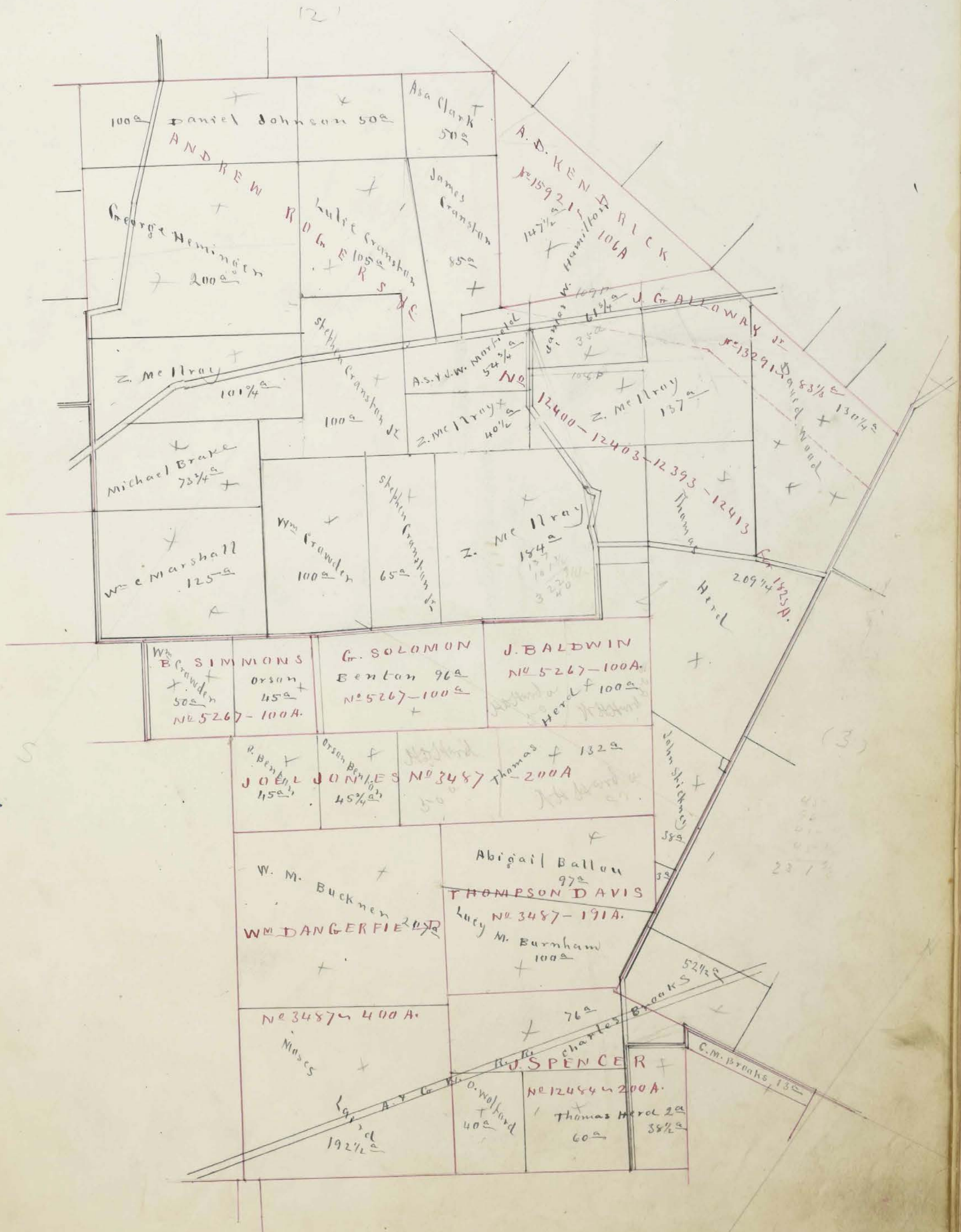
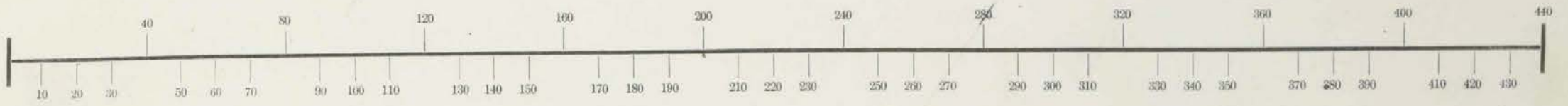
Section, No. _____ Lot _____

Scale, 40 Rods to an Inch, or 10 Rods to 1-4 Inch.



Section, No. _____ Lot _____

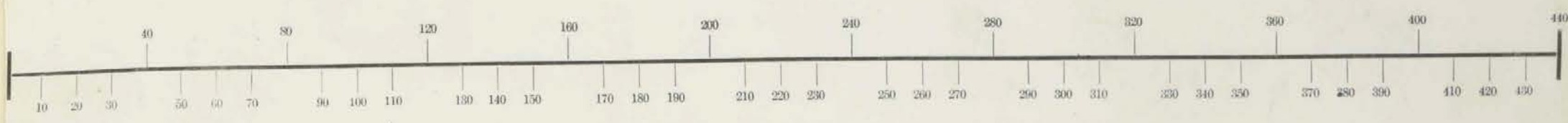
Scale, 40 Rods to an Inch, or 10 Rods to 1-4 Inch.



Section, No. Lot

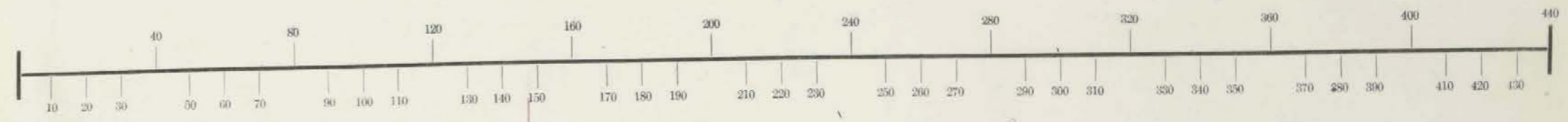
Scale, 40 Rods to an Inch, or 10 Rods to 1-4 Inch.

130
40
23
4



Section, No. Lot

Scale, ¹⁵/₄₀ Rods to an Inch, or 10 Rods to 1-4 Inch.



Plat of
NEWTON

15 poles to an inch January 11 1870

J. J. Mahaffy

I. M.



Assessment of Real Property in *Liberty* Township,

Union County, Ohio, for the Year 1870.

For Plats of all Lands described on this Page, see Page _____ of Plats.	DESCRIPTION OF PROPERTY.				No. of Acres of Land Classified.					
	In Whose Name Assessed.	No. of Entry.	Orig'l Quantity.	ORIGINAL PROPRIETOR.	WATER COURSE.	Arable & Plow Land.	Meadow & Pasture Land.	Uncultiv'd & Wood Land.	Acres.	H.
<i>Atkinson S. W.</i>	<i>12472</i>	<i>1600</i>	<i>M. Vance</i>	<i>Milleruk</i>	<i>2</i>	<i>7</i>				
<i>Anderson Oim B.</i>	<i>12472</i>	<i>1600</i>	<i>M Vance</i>	<i>Milleruk</i>	<i>23</i>	<i>35</i>	<i>30</i>			
<i>Argo C. S.</i>	<i>12472</i>	<i>1600</i>	<i>M Vance</i>	<i>Milleruk</i>		<i>1</i>				
<i>Argo Aaron S.</i>	<i>12472</i>	<i>1600</i>	<i>M Vance</i>	<i>Milleruk</i>						
<i>Anthony John</i>	<i>12472</i>	<i>1600</i>	<i>M Vance</i>	<i>Milleruk</i>						
<i>"</i>	<i>5777</i>	<i>300</i>	<i>S Bailey</i>	<i>"</i>						
<i>Argo David S.</i>	<i>3480</i>	<i>700</i>	<i>S Bailey</i>	<i>Milleruk</i>	<i>20</i>	<i>68</i>	<i>12 1/2</i>			
<i>Andrews Edwin</i>	<i>3689</i>	<i>600</i>	<i>J Wolston</i>	<i>Milleruk</i>	<i>26</i>	<i>24</i>	<i>25</i>			
<i>Amerine Rodney P.</i>	<i>6563</i>	<i>800</i>	<i>D Mathur</i>	<i>Milleruk</i>	<i>24</i>	<i>25</i>	<i>15 3/4</i>			
<i>Austin, Carlill</i>	<i>6567</i>					<i>2</i>				
<i>Brake Michel</i>	<i>12393</i>	<i>1823</i>	<i>S. Spink</i>	<i>Darbyuk</i>	<i>9</i>	<i>7</i>	<i>57 1/4</i>			
<i>Brake Adame</i>	<i>4404</i>	<i>1333 1/3</i>	<i>B. Grimes</i>	<i>Darbyuk</i>	<i>8</i>	<i>36</i>	<i>10</i>			
<i>Baxley J. W.</i>	<i>3462</i>	<i>150</i>	<i>D Mathur</i>	<i>Milleruk</i>	<i>14</i>	<i>42</i>	<i>10 1/2</i>			
<i>Benton Hiram</i>	<i>12472</i>	<i>1600</i>	<i>M Vance</i>	<i>Milleruk</i>						
<i>Benton Olson</i>	<i>3487</i>	<i>200</i>	<i>Joel Jones</i>	<i>Darbyuk</i>						
<i>"</i>	<i>3267</i>	<i>100</i>	<i>R Sims</i>	<i>"</i>						
<i>Bersia John R.</i>	<i>5267</i>	<i>100</i>	<i>Ally Latham</i>	<i>Milleruk</i>	<i>35</i>	<i>125</i>	<i>71 3/4</i>			
<i>"</i>	<i>6967</i>	<i>1828</i>	<i>R Means</i>	<i>Milleruk</i>	<i>25</i>	<i>38</i>	<i>10 1/2</i>			
<i>Bealer William</i>	<i>3444</i>	<i>1000</i>	<i>David Dureau</i>	<i>Milleruk</i>	<i>10</i>	<i>76</i>	<i>35 3/4</i>			
<i>Burson Albert L.</i>	<i>5805</i>	<i>1828</i>	<i>R Means</i>	<i>Milleruk</i>		<i>24</i>	<i>3/4</i>			
<i>Brooks Charles W.</i>	<i>4404</i>	<i>1333 1/3</i>	<i>J. Spencer</i>	<i>Milleruk</i>	<i>18</i>	<i>83</i>	<i>40 1/2</i>			
<i>"</i>	<i>12393</i>		<i>B. Grimes</i>	<i>"</i>						
<i>"</i>	<i>5729</i>		<i>R. Means</i>	<i>"</i>						
			<i>Total</i>		<i>214</i>	<i>583 1/4</i>	<i>320 3/4</i>			

Whole No. of Acres.	Value per Acre including Buildings.	Total Value of Lands, excluding Buildings.	Value of all Buildings.			Total Value of Lands and Buildings.	Amount Added or Deducted by Co. Board of Equalization.	Total Value as Equalized by Co. Board.	Amount Added or Deducted by State Board of Equalization.	Total Value as Equalized by State Board.	REMARKS.	
			Houses.	Mills.	Other Buildings.							
Acres.	H.	Dollars.	Dollars.	Dollars.	Dollars.	Dollars.	Added Dollars.	Deducted Dollars.	Dollars.	Added Dollars.	Deducted Dollars.	Dollars.
<i>9</i>	<i>45</i>	<i>405</i>	<i>300</i>			<i>755</i>			<i>755</i>			<i>91 664</i>
<i>88</i>	<i>20</i>	<i>1760</i>				<i>1760</i>			<i>1760</i>			<i>211 1549</i>
<i>2 1/4</i>	<i>200</i>	<i>200</i>	<i>400</i>		<i>150</i>	<i>750</i>			<i>750</i>			<i>90 660</i> <i>In town 15</i>
<i>1/4</i>												<i>no such name</i>
<i>1/4</i>		<i>40</i>				<i>40</i>			<i>40</i>			<i>35</i> <i>Allotment Stratten Dec 29/69</i>
<i>100 1/2</i>	<i>21</i>	<i>2110</i>	<i>300</i>		<i>250</i>	<i>2660</i>			<i>2660</i>			<i>319 2341</i>
<i>78</i>	<i>20</i>	<i>1500</i>			<i>250</i>	<i>1750</i>			<i>1750</i>			<i>210 1540</i>
<i>62 3/4</i>	<i>18</i>	<i>1168</i>	<i>150</i>		<i>100</i>	<i>1418</i>			<i>1418</i>			<i>170 1248</i>
<i>2</i>	<i>20</i>	<i>40</i>				<i>40</i>			<i>40</i>			<i>5 35</i>
<i>73 1/4</i>	<i>16</i>	<i>1172</i>				<i>1172</i>			<i>1172</i>			<i>141 1031</i>
<i>324</i>	<i>15</i>	<i>510</i>				<i>810</i>			<i>810</i>			<i>97 713</i>
<i>66 1/2</i>	<i>24</i>	<i>1576</i>				<i>1576</i>			<i>1576</i>			<i>192 1404</i>
<i>45</i>	<i>19</i>	<i>810</i>				<i>810</i>			<i>810</i>			<i>97 713</i>
<i>141</i>	<i>18</i>	<i>3948</i>				<i>3948</i>			<i>3948</i>			<i>474 3474</i>
<i>45 3/4</i>	<i>18</i>	<i>822</i>				<i>822</i>			<i>822</i>			<i>89 723</i>
<i>73 1/2</i>	<i>25</i>	<i>1837</i>				<i>1837</i>			<i>1837</i>			<i>221 1616</i>
<i>131 3/4</i>	<i>21</i>	<i>2556</i>				<i>2556</i>			<i>2556</i>			<i>307 2249</i>
<i>24 3/4</i>	<i>24</i>	<i>574</i>				<i>574</i>			<i>574</i>			<i>71 523</i>
<i>76</i>	<i>18</i>								<i>1368</i>			<i>164 1204</i>
<i>52 1/2</i>	<i>18</i>	<i>2541</i>	<i>300</i>		<i>200</i>	<i>3047</i>			<i>1445</i>			<i>173 1272</i>
<i>13</i>	<i>18</i>								<i>234</i>			<i>28 206</i>
<i>1127 1/2</i>		<i>23715</i>	<i>1570</i>			<i>26365</i>			<i>26365</i>			<i>3165 23200</i>
									<i>27961</i>			<i>319 300</i>

Assessment of Real Property in *Liberty* Township,

Union County, Ohio, for the Year 1870.

For Plats of all Lands described on this Page, see Page _____ of Plats.			No. of Acres of Land Classified.		Arable & Plow Land.		Meadow & Pasture Land.		Uncultivated & Wood Land.		Whole No. of Acres.	Value per Acre of Building.	Total Value of Lands, excluding Buildings.	Value of all Buildings.			Total Value of Lands and Buildings.	Amount Added or Deducted by Co. Board of Equalization.		Total Value as Equalized by Co. Board.	Amount Added or Deducted by State Board of Equalization.		Total Value as Equalized by State Board.	REMARKS.
In Whose Name Assessed.	No. of Entry.	Orig'l Quantity.	DESCRIPTION OF PROPERTY.	ORIGINAL PROPRIETOR.	WATER COURSE.	Acres.	H.	Acres.	H.	Acres.				H.	Houses.	Mills.		Other Buildings.	Added Dollars.		Deducted Dollars.	Added Dollars.		
Ballou Arigal	4404	1333 1/3	J Spence	Milleruk	30		18			80 1/2		108 1/2												
-	3487	191	J. Davis	Sarbyeruk								97	20	4170	300		250	4220		4720	566	4154		
-	12472	1823	Rodgers & Others									3												
Bowersmith David	4404	1333 1/3	J Spence	Milleruk	19		26			30		75	18	1350				1350		1350	102	1185		
Berrian William	12472	1600	M Vance	Milleruk								14	20	50	300			350		250	30	220		
Ballinger Samuel	3443	1000	D Duncan	Milleruk	11		5			59		75	14	1050				1050		1050	126	924		
Berrham Lucy M	3487	400	W Dangerfield	Milleruk	4		46			50		100	17	1700	250			1850		1950	234	1716		
Baker Abraham M	5729	1333 1/3	R Means	Milleruk								41 1/2												
-	4404		B. Grimes		20		25			51 1/4		55 1/4	17	1645				1645		1645	197	1448		
Buck Helen A	3689	600	J Woolston	Milleruk	25		5			20		50	16	800				800		800	96	704	Cred by Philena Smith	
Buehner W M	3487	400	W Dangerfield	Milleruk	16		120			71		207	16	3312	100			3412		3412	410	3002		
Baker Abraham	5729	1333 1/3	R Means	Milleruk																				
Bury Joz E	5729	1333 1/2	R Means	Milleruk	11		23			22		64	19	1216				1216		1216	146	1070		
Broughman Thomas	12283	1000	J Williamson	Milleruk	12		5			43 1/4		60 1/4	15	904				904		904	108	796		
Burton Abram	4404	1333 1/3	B. Grimes	Milleruk	35		112			75		222	21	4662				4662		4662	559	4103		
Broughman John	12283	1000	J Williamson	Milleruk								10	15	150				150		150	18	132		
Cook Solomon	3444	1000	D Duncan	Milleruk	33		57			35		125	25	3125	400		250	3775		3775	453	3322		
-	3443				40		20			51 1/2		111 1/4	20	2225				2225		2225	267	1958		
-	4815	1380	L Jones		25		20			15 1/4		120 1/4	20	2405				2405		2405	289	2116		
Crowder William	5267	100	B Simmons	Sarbyeruk								50												
-	12472	1823	Rodgers & Others	Milleruk	25		70			55		100	17	2550	300		200	3050		3050	366	2684		
Clark Asa	12472	1823	Rodgers & Others	Milleruk	30					20		30	18	900				900		900	108	792		
-	12472	1600	M Vance		14		20			8		42	18	756		150		906		906	109	797		
Crawston Stephen Jr	12472	1600	M Vance	Milleruk	20		66			5 1/2		91 1/2	18	1647	150			1797		1797	216	1581		
-	12413	1823	Rodgers & Others		10		20			13 1/2		165	16	2640				2640		2640	317	2323		
Total					355		715 1/2			371 1/2		2023 1/2		37467	1700		900	42007		39807	4777	35030		
Total					398		798 1/2			437 1/2		2023 1/2		37257	1700		852	39807		39807	4777	35030		

Assessment of Real Property in *Lisbury* Township,

Union County, Ohio, for the Year 1870.

For Plats of all Lands described on this Page, see Page _____ of Plats.	No. of Entry.	Orig'l Quantity.	DESCRIPTION OF PROPERTY.		No. of Acres of Land Classified.				Whole No. of Acres.	Value per Acre, excluding Buildings.	Total Value of Lands, excluding Buildings.	Value of all Buildings.			Total Value of Lands and Buildings.	Amount Added or Deducted by Co. Board of Equalization.		Total Value as Equalized by Co. Board.	Amount Added or Deducted by State Board of Equalization.		Total Value as Equalized by State Board.	REMARKS.		
					Arable & Plow Land.		Meadow & Pasture Land.					Uncultiv'd & Wood Land.		Houses.		Mills.	Other Buildings.		Added Dollars.	Deducted Dollars.			Added Dollars.	Deducted Dollars.
					Acres.	H.	Acres.	H.				Acres.	H.	Dollars.		Dollars.	Dollars.		Dollars.	Dollars.			Dollars.	Dollars.
<i>Cranston Stephen Jr</i>	12472	1600	<i>M Vance</i>	<i>Milleruk</i>	12		28	$\frac{3}{4}$			40 $\frac{3}{4}$	20	815	200	100	1115			1115	134	981			
<i>Cranston James</i>	12472	1600	<i>M Vance</i>	<i>Milleruk</i>	20		25		40		85	16	1360			1360			1360	163	1197			
<i>Carter John</i>	1828	1828	<i>R Means</i>	<i>Milleruk</i>	25		68		25		107	24	2568	250	200	3018			3018	362	2656			
<i>Colver Oyas</i>	1828	1828	<i>R Means</i>	<i>Milleruk</i>	35		67		30		11	24	264			264			264	32	232			
<i>Carter Jacobus</i>	1828	1828	<i>R Means</i>	<i>Milleruk</i>	45		45		10		132	24	3168	300		3468			3468	416	3052			
<i>Carter Lewis</i>	880	880	<i>D McArthur</i>	<i>Milleruk</i>	15				33 $\frac{3}{4}$		100	25	2500			2500			2500	300	2200			
<i>Carter Agnes</i>	880	880	<i>D McArthur</i>	<i>Milleruk</i>			3		16		48 $\frac{3}{4}$	16	780			780			780	94	686	<i>Ded cal for 46</i>		
<i>Carter Charles</i>	880	880	<i>D McArthur</i>	<i>Milleruk</i>					16		3 $\frac{1}{2}$	40	140	300	120	440			440	53	387			
<i>Carter Simon R</i>	880	880	<i>D McArthur</i>	<i>Milleruk</i>	16		34		11 $\frac{1}{2}$		67 $\frac{1}{2}$	18	1251			1251			1251	150	1101			
<i>Carter John</i>	880	880	<i>D McArthur</i>	<i>Milleruk</i>	16		88		20		124	24	2116	200	100	3216			3216	393	2823			
<i>Colver Russel</i>	455	455	<i>John Scarborough</i>	<i>Milleruk</i>							11	25	2775			2775			2775	333	2442			
	455	455	<i>Allen Latham</i>	<i>Darbyruk</i>	56		160		20		120	25	3125	300	100	3525			3525	423	3102			
<i>Carter Isreal</i>	600	600	<i>J Woolston</i>	<i>Darbyruk</i>	38		66		20		124	18	2332	100		2332			2332	280	2052	<i>Ded cal for 131 ac</i>		
<i>Cannada Jacob</i>	300	300	<i>H Russell</i>	<i>Darbyruk</i>	16		4		20		40	16	640			640			640	77	563			
<i>Cougill John B</i>	300	300	<i>Winters Rapel</i>	<i>Darbyruk</i>					50		50	18	900			900			900	108	792			
<i>Cougill Jonathan J</i>	300	300	<i>Winters Rapel</i>	<i>Darbyruk</i>					48 $\frac{3}{4}$		48 $\frac{3}{4}$	18	811			811			811	105	706			
<i>Elins Minnie</i>	1333 $\frac{1}{3}$	1333 $\frac{1}{3}$	<i>B Grims</i>	<i>Milleruk</i>			50		50		100	23	2300			2300			2300	276	2024	<i>Owned by J. L. Kichy</i>		
<i>Croston John</i>	780	780	<i>R Dorsey</i>	<i>Darbyruk</i>			50		70 $\frac{1}{4}$		90	16	1440			1440			1440	173	1267			
	80	80	<i>J Gallway</i>								30 $\frac{1}{4}$		484			484			484	59	426			
<i>Conner Isaac</i>	1333 $\frac{1}{3}$	1333 $\frac{1}{3}$	<i>B Grims</i>	<i>Milleruk</i>	23		47		35		105	20	2100			2100			2100	252	1848			
<i>Cranston Lalie</i>	1823	1823	<i>Rodgers Otho</i>	<i>Darbyruk</i>	20		30		55		108	16	1680			1680			1680	202	1478			
<i>Cranston Martha</i>	800	800	<i>D McArthur</i>	<i>Milleruk</i>							1/4	200	50	200			250			250	30	220	<i>in down</i>	
<i>Clegg William</i>	1333 $\frac{1}{3}$	1333 $\frac{1}{3}$	<i>B Grims</i>	<i>Milleruk</i>	10		30		10		50	18	900	100	100	1100			1100	132	968			
<i>Custer Elizabeth</i>	100	100	<i>Jeo Water</i>	<i>Darbyruk</i>			10		38 $\frac{3}{4}$		48 $\frac{3}{4}$	18	811			811			811	105	706	<i>Mistake in name should be Elizabeth C Austin</i>		
<i>Total</i>					347		805 $\frac{3}{4}$		524 $\frac{1}{2}$		1747 $\frac{1}{2}$		36302	1280	100	38582			38582	4687	34101			
<i>Total</i>					347 $\frac{1}{2}$		815 $\frac{3}{4}$		524 $\frac{1}{2}$		1752 $\frac{1}{2}$		36202	1280	100	38482			38482	4687	34101			

Assessment of Real Property in *Liberty* Township,

Union County, Ohio, for the Year 1870.

For Plats of all Lands described on this Page, see Page _____ of Plats.	IN WHOSE NAME ASSESSED.	No. of Entry.	Orig'l Quantity.	DESCRIPTION OF PROPERTY.	WATER COURSE.	No. of Acres of Land Classified.						Whole No. of Acres.	Value per Acre, excluding Buildings.	Total Value of Lands, excluding Buildings.	Value of all Buildings.			Total Value of Lands and Buildings.	Amount Added or Deducted by Co. Board of Equalization.	Total Value as Equalized by Co. Board.	Amount Added or Deducted by State Board of Equalization.		Total Value as Equalized by State Board.	REMARKS.
						Arable & Plow Land.	Meadow & Pasture Land.	Uncultiv'd & Wood Land.	Houses.	Mills.	Other Buildings.				Added Dollars.	Deducted Dollars.	Dollars.				Dollars.	Dollars.		
	<i>Denow Ann M</i>	12472	1000	<i>M Vance</i>	<i>Milleruck</i>							2										<i>Stenton C</i>		
	<i>Drake Abraham</i>	3444	1000	<i>D Duncan</i>	<i>Milleruck</i>	35		29		70	$\frac{3}{4}$	134 $\frac{3}{4}$	20	2675	250		2945		2945	383	2592			
	<i>Dickinson Robert</i>	4815	1380	<i>L Jones</i>	<i>Milleruck</i>					22	$\frac{3}{4}$	18 $\frac{1}{4}$	18	324			324		328	39	289			
	<i>Dixon John</i>	4404	1333 $\frac{1}{3}$	<i>B Grimes</i>	<i>Milleruck</i>	38		25		30	$\frac{1}{2}$	93 $\frac{1}{2}$	11	1716			1716		1776	213	1563			
	<i>Dillon Isaac</i>	4404	1333 $\frac{1}{3}$	<i>B. Grimes</i>	<i>Milleruck</i>	8		10				18	18	324			324		324	39	285			
	<i>Dunford J M</i>	6563 6776 3462	900	<i>D McArthur</i> <i>J Scarborough</i>	<i>Milleruck</i>	60		68				123 $\frac{1}{2}$	30	3740	250	150	4140		4140	497	3643	<i>Owned by H. Shaffer</i>		
	<i>Evans Moses</i>	12143 13271	1023	<i>Rodgers & Co</i> <i>Joseph Vance</i>	<i>Darbyrun</i>							51	20	1020			1020		1020	123	897			
		13271	94	<i>W Richey</i>		39		162		119		100	20	2000			2000		2000	240	1760			
		3490	100	<i>W Richey</i>								42	20	820	400	300	1520		1520	182	1338			
		5271	200	<i>W Richey</i>								138 $\frac{3}{4}$	20	2575			2575		2575	309	2266			
	<i>Davis W & John</i>	4815	1380	<i>L Jones</i>	<i>Milleruck</i>	8		2		7	$\frac{1}{4}$	17 $\frac{1}{4}$	17	297	500		797		797	96	701	<i>Some waste land</i>		
	<i>Davis Anthony</i>	4815	1380	<i>L Jones</i>	<i>Milleruck</i>			1				1	25	25			25		25	3	22	<i>See S. H. James Jan 30 1870</i>		
	<i>Draper Nelson</i>	5729	1000	<i>R. Mans</i>	<i>Milleruck</i>	25				37	$\frac{1}{2}$	62 $\frac{1}{2}$	17	1062			1062		1062	127	935			
		4404	1333 $\frac{1}{3}$	<i>B. Grimes</i>								25	16	400			400		400	48	352			
	<i>Dean George</i>	3443	1000	<i>D Duncan</i>	<i>Milleruck</i>	35		52		35	$\frac{1}{4}$	152 $\frac{1}{4}$	21	3191		300	3491		3497	420	3077			
	<i>Dean Jacob</i>	3689	600	<i>J Hopton</i>	<i>Milleruck</i>							8 $\frac{1}{4}$	17	140			140		140	17	123			
	<i>Drake Daniel</i>	12283	1000	<i>Y. Milburn</i>	<i>Milleruck</i>	16		22		14	$\frac{1}{4}$	44	11	748	250		998		998	120	878			
				<i>Y. Milburn</i>	<i>Milleruck</i>	6		12		10	$\frac{1}{2}$	29 $\frac{1}{2}$	17	501			501		501	60	441			
	<i>Evans Joseph</i>	12283	1000	<i>Y. Wilkinson</i>	<i>Milleruck</i>	25		157		16	$\frac{1}{2}$	183 $\frac{1}{2}$	16	2712			2712		2712	349	2363	<i>See to Buy Wilkins Dec 31 1869</i>		
	<i>Total</i>					270		437		531		1240		24741	1150	600	27141		27141	3287	23984			

Assessment of Real Property in *Liberty* Township,

Union County, Ohio, for the Year 1870.

For Plats of all Lands described on this Page, see Page _____ of Plats.	DESCRIPTION OF PROPERTY.				No. of Acres of Land Classified.						Whole No. of Acres.	Value per Acre, excluding buildings.	Total Value of Lands, excluding Buildings.	Value of all Buildings.			Total Value of Lands and Buildings.	Amount Added or Deducted by Co. Board of Equalization.		Total Value as Equalized by Co. Board.	Amount Added or Deducted by State Board of Equalization.		Total Value as Equalized by State Board.	REMARKS.
					Arable & Plow Land.		Meadow & Pasture Land.		Uncultiv'd & Wood Land.					Houses.	Mills.	Other Buildings.		Added Dollars.	Deducted Dollars.		Added Dollars.	Deducted Dollars.		
					Acres.	H.	Acres.	H.	Acres.	H.				Dollars.	Dollars.	Dollars.		Dollars.	Dollars.		Dollars.	Dollars.		
Hersha Thomas his	12472	1600	M Vance	Millerick	21	33	12				66	21	1386	200	200	1786		1786	214	1572				
Holloway William	3443	1000	David Duncan	Millerick	21	20	104				157	15	2265			2265		2265	272	1993				
Herd Thomas D	12484	1000	Joseph Spain	Millerick	56	27	15 1/2				98 1/2	17	1666	200		1866		1866	224	1642				
Harrington Nelson	3480	700	J. Bailey	Millerick	11	74	40				145	25	3625	275	100	4000		4000	480	3520				
Hartshorn S. J.	⁶⁴⁰⁴ ¹⁷⁷⁷⁰ ¹⁷⁷⁷⁰	1828	R Means	Millerick	28	42	45				115	24	2760	250	100	3210		3210	335	2825				
Herd Thomas	3487	2000	Joel Jones	Millerick							132	20	2640			2640		2640	317	2323				
"	5267	100	J Baldwin	"							100		2000			2000		2000	240	1760				
"	¹²⁴⁷² ¹²⁴⁷² ¹²⁴⁷²	1828	Rodgers others	Darbycrick	88	228	125 1/4				209 1/4	20	4185		250	4435		4435	532	3903				
"	3687	2000	Joel Jones	Millerick																				
Hamminger George	¹²⁴¹³ ¹²⁴¹³ ¹²⁴¹³	1828	Rodgers others	Darbycrick	35	65	100				200	20	4000	400	200	4600		4600	552	4048				
Hend Sarah J.	¹²⁴⁰¹ ¹²³⁸⁸	200	Shanks & McLean	Millerick																				
Hammond Egil	⁶⁷⁷⁶ ⁶⁵⁶³	800	D McArthur	Millerick							1/4	160	40			40		40	5	35	down			
"	12472	1600	M Vance	"	12	21	10				43	25	1015			1015		1075	129	946				
Hamilton J W	5777	800	R Means	Millerick							80										has such lands on the plat			
Hamilton James W	12472	1600	M Vance	Millerick	37	12	35				86	17	1634			1634		1634	196	1438				
"	¹⁵⁻²²¹ ¹²⁴⁷² ¹²⁴⁷²	100	A D Benedict	"	35	65	101 1/4				147 1/2	17	2507	150		2657		2657	319	2338				
"	¹²⁴⁷² ¹²⁴⁷²	1823	Rodgers others	"							61 1/2	17	1050			1050		1050	126	924				
Hutchinson A. A	3462	666	J Scarborough	Millerick	10	49	10				50	20	1000	300	100	1400		1400	168	1232				
"	3442		"	"							19		380			380		380	46	334				
Huffman John	³⁴⁴⁴ ³⁴⁴³	2000	D Duncan	Millerick	23	55	30				108	20	2160	225		2385		2385	286	2099	all to J. Grimes			
Hill George J & Aug	4404	1333 1/3	B. Grimes	Millerick	38	46	18				102	18	1836	200		2036		2036	244	1792				
Hodge John L	12472	1600	M Vance	Millerick							50	20	1000			1000		1000	120	880	all to K. F. Higgins			
Hodge James R	16133	81	Allen Latham	Millerick	14	33	25 1/2				62 1/2	21	1312	200		1512		1512	181	1331				
Hess Philip	14912	155	Allen Latham	Millerick	14	6	41				61	16	976			976		976	117	859				
Hill George Jr	⁶⁷⁷⁶ ⁵⁷⁷⁷	1600	Means McArthur	Millerick		9					9	40	360		100	460		460	55	405				
Total					431	845	716				2816 1/2	22	31510	2250	1200	43407		43407	5208	36199				
													39857	2257	1300	43407		43407						

Assessment of Real Property in *Liberty* Township,

Union County, Ohio, for the Year 1870.

IN WHOSE NAME ASSESSED.	No. of Entry.	Orig'l Quantity.	DESCRIPTION OF PROPERTY.	WATER COURSE.	No. of Acres of Land Classified.										
					Arable & Plow Land.	Meadow & Pasture Land.	Uncultivated & Wood Land.	Acres.	H.	Acres.	H.	Acres.	H.		
Hisey Andrew	5729	1000	R Means	Millerick	3		3								
Henry George W	4815-1380		L Jones	Millerick			25		1	3/4					
Hodge Thomas J	16133	81	Allen Sathan	Millerick	12		4		16						
Harrington David	4815-1380		L Jones	Millerick			30		100						
Harrington Joseph W	3444	1000	D Doucane	Millerick	13		1								
Hains Henry M	12472	1600	M Vance	Millerick	53		144		50	1/2					
Higgins R. F	12472	1600	M Vance	Millerick	26		24		10						
Haymaker Jordenick	4404	1333 2/3	B Grime	Millerick	20				65						
Harrington Mary M	3462	666	Scaborngh	Millerick	2		12		5	1/2					
Johnson David	12413 12403 12498	1823	Rodgers & Thos	Millerick	28		54		68						
Johnson Baldwin	5729	1000	R Means	Millerick	31		21		52	3/4					
Johnson John	5729	1000	R Means	Millerick	5		8		14	3/4					
Jewell S S	5729	1000	R Means	Millerick	30		6		51	1/4					
Johnson David Hirs	5729	1000	R Means	Millerick	10		25		10						
Johnson Matthew	4815-1000		R Means	Millerick	10		20		45						
Judy W	4404	1333 2/3	B. Grimes	Millerick	37		64		60						
Judy Anzie	4404	1333 2/3	B. Grime	Millerick	22		31		40						
Jackson William F	6345 5528 5647	1828	R Means	Darbyville	4		14		10						
Jackson Henry F	5729	200	R Means	Millerick	1		11		42	1/2					
Jenkins Lewis	4404	1333 2/3	B Grimes	Millerick			160		54	1/2					
Total					315		663		715	1/2					

Whole No. of Acres.	Value per Acre of Buildings.	Total Value of Lands, excluding Buildings.	Value of all Buildings.			Total Value of Lands and Buildings.	Amount Added or Deducted by Co. Board of Equalization.	Total Value as Equalized by Co. Board.	Amount Added or Deducted by State Board of Equalization.	Total Value as Equalized by State Board.	REMARKS.
			Houses.	Mills.	Other Buildings.						
6	20	120				120		120	14	106	
20 3/4	18	481	400			881		881	106	775	
32	15	480				480		480	57	423	
130	18	2340				2340		2340	281	2059	
22	20	440				440		440	53	387	All W. H. C. Smith See 304869
148 1/4	20	2975	300		150	3425		3425	411	3014	
104 1/4		2085				2085		2085	250	1835	
60	20	1200	250		300	1650		1650	193	1452	
83	18	1530				1530		1530	184	1346	W. H. C. Smith
4	18	72				72		72			
19 1/2	45	877	500		125	1500		1500	180	1320	
150	20	3000				3000		3000	360	2640	
112 3/4	17	1917				1917		1917	230	1687	
27 3/4	15	415				415		415	50	365	
93 1/4	11	1585	150			1735		1735	209	1527	
45	20	900				900		900	108	792	
75	20	1500				1500		1500	180	1320	
161	24	3864				3864		3864	464	3400	
93	11	1581				1581		1581	190	1391	
28	13	644	200		100	944		944	113	831	
62 1/2	16	1000	200			1200		1200	144	1056	
209 1/2	19	3980				3980		3980	478	3502	
1681 1/2		32,904	2000		573	35487		35487	4269	31228	

Assessment of Real Property in

Township,

Union County, Ohio, for the Year 1870.

For Plats of all Lands described on this Page, see Page _____ of Plats.				DESCRIPTION OF PROPERTY.					No. of Acres of Land Classified.			Value of all Buildings.			Total Value of Lands and Buildings.		Amount Added or Deducted by Co. Board of Equalization.		Total Value as Equalized by Co. Board.		Amount Added or Deducted by State Board of Equalization.		Total Value as Equalized by State Board.		REMARKS.
									Arable & Plow Land.	Meadow & Pasture Land.	Uncultivat'd & Wood Land.	Houses.	Mills.	Other Buildings.	Dollars.	Dollars.	Dollars.	Added Dollars.	Deducted Dollars.	Dollars.	Added Dollars.	Deducted Dollars.	Dollars.	Added Dollars.	
IN WHOSE NAME ASSESSED.	No. of Entry.	Orig'l Quantity.	ORIGINAL PROPRIETOR.	WATER COURSE.	Acres	H.	Acres	H.	Acres	H.	Acres	H.	Dollars.	Dollars.	Dollars.	Dollars.	Dollars.	Dollars.	Dollars.	Dollars.	Dollars.	Dollars.	Dollars.		
Kindel Jeremiah	6495 3359 3247	1828	R Means	Darbycreek	52	6	25				83	25	2,075	150	200	2,425			2,425	291	2,134				
Ken Robert M	6491 3359 3247	1828	R Means	Darbycreek		32	60				632	16	10,112			10,112			10,112	1213	8899				
Kunkin John	5729	1000	R Means	Millerick	41	7	102				150	18	2,300			2,300			2,300	276	2,024				
Lard Moses	3487	400	W Daugfield	Millerick	30	25	137 1/2				192 1/2	16	3,080			3,080			3,080	370	2,710				
Lockwood M	4404	1333 1/3	B. Gimes	Millerick	3	13	35				111	19	2,109	250		2,359			2,359	283	2,076				
Lockwood Amalia	3462	666	J Scarborough	Millerick	42	94	95				108	28	3,024	400	200	3,624			3,624	435	3,189				
	12472	1600	M Vance	"							123		3,444			3,444			3,444	413	3,031				
Lockwood David	12472	1600	M Vance	Millerick							1/2	300	50	300		350			350	42	308				
Lyzas Charles	12472	1600	M Vance	Millerick							56	15	840			840			840	101	739				
	3689	600	Jmolton	"	57	83	60				194	20	3,880	150	200	4,230			4,230	507	3,723				
Lowe Lucas Lewis	3462	666	J Scarborough	Millerick	45	57	20				103	20	2,060	200	200	2,460			2,460	245	2,215				
Leanheart Alexander	12472 6776	2486	Wm Vance	Millerick							82	200	100	500		600			600	72	528				
Latham Allen	13447	485	Allen Latham	Millerick							110	16	1,760			1,760			1,760	211	1,549				
	14755	400	"	"							102	15	1,530			1,530			1,530	184	1,346				
Lockwood E T J	6776 6776	880	Wm Vance	Millerick							1/2	40	20	200	100	320			320	38	282	Iron yard			
Lockwood Erasmus	12472	1600	M Vance	Millerick							3/4	160	120	250		370			370	44	326	Down			
Loug Galloway	5728	1333 1/3	R Means	Millerick	15	5	30				30	18	900			900			900	108	792				
Lowe Joseph	14755	400	A Latham	Millerick							23 1/2	15	352			352			352	42	310				
Moore William	6233	400	Little Hudson	Millerick							23 1/2	21	478			478			478	59	434				
	14755	1	A. Galloway	"	12	6	2 1/2				20 1/2	16	328			328			328	39	289				
Morse Charles P	14912	155	Allen Latham	Millerick							69	15	1,035			1,035			1,035	124	911				
	3458 3458	1876	Wm Vance & Bailey	"	31	84	18				133	30	3,190	350	200	4,540			4,540	545	3,995				
Morse Charles	12472 12472	400	J Galloway	Millerick	18	46	9				68	18	1,224			1,224			1,224	147	1,077	Map says 200			
Marshall W E Esq	12282	750	Darbycreek	Darbycreek	24	12	20				116	18	2,088	300	200	2,588			2,588	311	2,277				
Marshall W C	1233 1233	1828	Darbycreek	"	56	1	60				128	17	2,625			2,625			2,625	315	2,310				
Moore Silas	14755	400	A Latham	Darbycreek	5	2					7	17	117			117			117	14	105				
Total					425	.602	1575				2802		49654	3050	1300	54304			54008	6479	47829				
													50638	3050	1300	53128			53018	90	52128	11	79		
																			54099		6670	47608			

Assessment of Real Property in *Liberty* Township,

Union County, Ohio, for the Year 1870.

For Plats of all Lands described on this Page, see Page _____ of Plats.			DESCRIPTION OF PROPERTY.					No. of Acres of Land Classified.			Value of all Buildings.			Total Value of Lands and Buildings.		Amount Added or Deducted by Co. Board of Equalization.		Total Value as Equalized by Co. Board.		Amount Added or Deducted by State Board of Equalization.		Total Value as Equalized by State Board.		REMARKS.	
IN WHOSE NAME ASSESSED.	No. of Entry.	Orig'l Quantity.	ORIGINAL PROPRIETOR.	WATER COURSE.	Acres.	H.	Acres.	H.	Acres.	H.	Acres.	H.	Dollars.	Dollars.	Dollars.	Dollars.	Dollars.	Dollars.	Dollars.	Dollars.	Dollars.	Dollars.	Dollars.		Dollars.
Manchester P	12472	1600	M Vance	Milleruck			2	3/4					2 3/4	45	124			124			124	15	109	All to Hewitt	
Marpis James	12283	1000	G. Wilkinson	Milleruck	1		2		4 1/2				5 1/4	16	924			924			924	111	313		
Marpis Thomas	12283	1000	G. Wilkinson	Milleruck			30		8 1/2				11 1/4	16	1,908			1,908			1,908	229	1,679		
Maris Jessie	4815	1380	L Jones	Milleruck	35		77		30 1/2				103 1/4	20	2,065		250	2,315			2,315	27 1/2	2,037		
Maim Charity	4815	1380	L Jones	Milleruck					6 1/2				39		786			780			780	94	686		
McElroy Isaac	12429	1828	Rodgers & others	Milleruck	72		212		100				464 1/4	20	4,285	300		4,585		200	4,385	117 1/4	3,611		
McElroy Isaac	12429		J. Galloway																						
McElfish J. W.	4404	1333 1/2	B. Grimes	Milleruck	3		30		7				40	18	720			720			720	86	634	All to A. Balinga	
Middleton Timothy	16123	236	Allen Latham	Milleruck	24		33		43				100	19	1,700	150		1,850		300	2,150	282	2,069		
Mahaffey James J.	12472	1600	M. Vance	Milleruck	90		218		62				198	30	11,100	500		11,600		450	12,050	180 1/2	10,663		
Mahaffey James J.	3462	666	J. Scarborough										192	30				5160			5160	619	4541		
Mitchell John J.	5777	320	R. Means	Milleruck	10		10						18 1/2	30	540			340			340	60	475	to B. Glase	
Mitchell John J.	6563	880	L. McArthur										2	30	60			60			60	7	63		
Morse C. P. & C. P. J.	4815	1380	M Vance	Milleruck	15		45		26 1/4				86 3/4	20	1,735	200		1,935		150	2,085	250	1,835		
Maris Jessie	4815	1380	M Vance	Milleruck									3 1/2												Carried up
Mosfield A. S. J. W.	12388	1823	J. Galloway	Darbycruck	4		47		3 1/2				54 1/2	18	811			911		100	911	119	872		
McAllister R. L.	3689	600	Jacob Proctor	Milleruck	30		40		30				100 3/4	20	2,015	300		2,315		100	2,415	290	2,125		
Myer J. C.	6563	880	Duncan McArthur	Milleruck	8		27		16				57	24	1,224	125		1,349		200	1,549	186	1,363		
Total					288		860 1/4		457 1/2				1615 3/4		26,461	1,575		28,036		1,750	29,786				
															3540	1575	*	1750	38726	38726	464 1/2	34074			

Assessment of Real Property in *Liberty* Township,

Union County, Ohio, for the Year 1870.

For Plats of all Lands described on this Page, see Page _____ of Plats.	DESCRIPTION OF PROPERTY.				No. of Acres of Land Classified.				Whole No. of Acres.	Value per Acre, excluding Buildings.	Total Value of Lands, excluding Buildings.	Value of all Buildings.			Total Value of Lands and Buildings.	Amount Added or Deducted by Co. Board of Equalization.		Total Value as Equalized by Co. Board.	Amount Added or Deducted by State Board of Equalization.		Total Value as Equalized by State Board.	REMARKS.					
	IN WHOSE NAME ASSESSED.	No. of Entry.	Orig'l Quantity.	ORIGINAL PROPRIETOR.	WATER COURSE.	Arable & Plow Land.		Meadow & Pasture Land.				Uncultiv'd & Wood Land.	Houses.	Mills.		Other Buildings.	Dollars.		Dollars.	Dollars.			Dollars.	Dollars.	Dollars.	Dollars.	
						Acres.	H.	Acres.																			H.
	<i>Norvell D, S</i>	<i>13849</i>	<i>80</i>	<i>J. Galloway</i>	<i>Darbycrnk</i>	<i>20</i>		<i>40</i>		<i>4 1/4</i>			<i>64 1/4</i>	<i>20</i>	<i>1285</i>	<i>200</i>	<i>200</i>	<i>1685</i>		<i>202</i>	<i>1483</i>						
	<i>Norvell Seth B</i>	<i>12282</i>	<i>523</i>	<i>J. Galloway</i>	<i>Darbycrnk</i>	<i>13</i>		<i>47</i>		<i>30</i>			<i>82</i>	<i>20</i>	<i>1640</i>	<i>225</i>	<i>125</i>	<i>1990</i>		<i>239</i>	<i>1751</i>						
	<i>Norvell A Hiram</i>	<i>12282</i>	<i>550</i>	<i>J. Galloway</i>	<i>"</i>	<i>13</i>		<i>24</i>		<i>88</i>			<i>125</i>	<i>16</i>	<i>2000</i>		<i>2000</i>	<i>2000</i>		<i>240</i>	<i>1760</i>	<i>map plat 131^a</i>					
	<i>Newland Andrew</i>	<i>4815</i>	<i>1380</i>	<i>L. Jones</i>	<i>Darbycrnk</i>	<i>8</i>		<i>37</i>		<i>20 1/2</i>			<i>20 1/2</i>	<i>20</i>	<i>1551</i>	<i>125</i>	<i>124</i>	<i>1800</i>		<i>216</i>	<i>1584</i>						
	<i>Neil James</i>	<i>12472</i>	<i>1600</i>	<i>M. Vance</i>	<i>Darbycrnk</i>	<i>8</i>		<i>4</i>		<i>2</i>			<i>14</i>	<i>16</i>	<i>252</i>			<i>252</i>		<i>30</i>	<i>222</i>						
	<i>Norvell A Hiram</i>	<i>12472</i>		<i>"</i>	<i>Millercrnk</i>			<i>1 1/2</i>					<i>1 1/2</i>	<i>30</i>	<i>45</i>	<i>100</i>		<i>145</i>		<i>17</i>	<i>128</i>	<i>was charged to Reddygo</i>					
	<i>Orakood Joseph</i>	<i>5729</i>	<i>1000</i>	<i>R. Meant</i>	<i>Millercrnk</i>	<i>20</i>				<i>54 1/4</i>			<i>54 1/4</i>	<i>17</i>	<i>922</i>			<i>922</i>		<i>111</i>	<i>811</i>						
	<i>Orakood James heirs</i>	<i>3480</i>	<i>700</i>	<i>S. Bailey</i>	<i>Millercrnk</i>	<i>3</i>							<i>3</i>	<i>25</i>	<i>75</i>			<i>75</i>		<i>9</i>	<i>66</i>						
	<i>"</i>	<i>3444</i>	<i>1000</i>	<i>D. Dorman</i>	<i>"</i>								<i>3</i>	<i>25</i>	<i>75</i>			<i>75</i>		<i>9</i>	<i>66</i>						
	<i>Orakood Noah</i>	<i>12283</i>	<i>1000</i>	<i>G. Wilkinson</i>	<i>Millercrnk</i>	<i>6</i>		<i>15</i>		<i>20</i>			<i>7 1/2</i>	<i>17</i>	<i>611</i>			<i>611</i>		<i>84</i>	<i>613</i>						
	<i>"</i>	<i>12472</i>	<i>1600</i>	<i>M. Vance</i>	<i>"</i>								<i>34</i>														
	<i>Orakood Aaron</i>	<i>12472</i>	<i>1600</i>	<i>M. Vance</i>	<i>Millercrnk</i>			<i>2</i>		<i>10</i>			<i>11</i>	<i>17</i>	<i>204</i>			<i>204</i>		<i>24</i>	<i>180</i>						
	<i>"</i>	<i>12283</i>	<i>1000</i>	<i>G. Wilkinson</i>	<i>"</i>								<i>1</i>														
	<i>Cuttand John</i>	<i>6332</i>	<i>400</i>	<i>F. H. Hudson</i>	<i>Millercrnk</i>			<i>30</i>		<i>6 1/4</i>			<i>36 3/4</i>	<i>20</i>	<i>735</i>			<i>735</i>		<i>82</i>	<i>647</i>						
	<i>Overdorf Nancy</i>	<i>6563</i>	<i>880</i>	<i>D. Marthas</i>	<i>Millercrnk</i>	<i>17</i>		<i>22</i>		<i>5</i>			<i>44</i>	<i>18</i>	<i>792</i>			<i>792</i>		<i>95</i>	<i>697</i>						
	<i>Overdorf M. G</i>	<i>3444</i>	<i>1000</i>	<i>David Lunan</i>	<i>Millercrnk</i>	<i>16</i>		<i>12</i>		<i>11</i>			<i>28</i>	<i>20</i>	<i>560</i>			<i>560</i>		<i>67</i>	<i>493</i>						
	<i>Partridge H. C</i>	<i>12472</i>	<i>1600</i>	<i>M. Vance</i>	<i>Millercrnk</i>								<i>28</i>														
	<i>Perry John</i>	<i>12472</i>	<i>1600</i>	<i>M. Vance</i>	<i>Millercrnk</i>	<i>30</i>		<i>21</i>		<i>35 1/4</i>			<i>86 1/4</i>	<i>17</i>	<i>1647</i>		<i>200</i>	<i>1847</i>		<i>222</i>	<i>1625</i>						
	<i>Parsnape M. E. Church</i>	<i>5777</i>	<i>200</i>	<i>M. Vance</i>	<i>Millercrnk</i>								<i>7 1/2</i>									<i>Heath's Corner before to Clay</i>					
	<i>Potee Lewis</i>	<i>5777</i>	<i>300</i>	<i>M. Vance</i>	<i>Millercrnk</i>	<i>9 1/2</i>							<i>9 1/2</i>	<i>40</i>	<i>380</i>			<i>380</i>		<i>46</i>	<i>334</i>						
	<i>"</i>	<i>6776</i>	<i>880</i>	<i>Duncan Marthas</i>	<i>"</i>			<i>8 1/2</i>					<i>8 1/2</i>	<i>40</i>	<i>340</i>	<i>200</i>	<i>300</i>	<i>840</i>		<i>101</i>	<i>739</i>						
	<i>"</i>	<i>6523</i>	<i>880</i>	<i>"</i>	<i>"</i>								<i>50</i>	<i>25</i>	<i>1250</i>			<i>1250</i>		<i>130</i>	<i>1100</i>						
	<i>"</i>	<i>5777</i>	<i>1823</i>	<i>Rodgers</i>	<i>Darbycrnk</i>	<i>25</i>		<i>17</i>		<i>8</i>			<i>50</i>	<i>25</i>	<i>1250</i>			<i>1250</i>		<i>130</i>	<i>1100</i>						
	<i>Total</i>					<i>188 1/2</i>		<i>283 1/2</i>		<i>207 1/2</i>			<i>721</i>		<i>14272</i>	<i>850</i>	<i>141</i>	<i>16176</i>		<i>1944</i>	<i>14235</i>						

Assessment of Real Property in Liberty Township,

Union County, Ohio, for the Year 1870.

Table with columns: IN WHOSE NAME ASSESSED, No. of Entry, Orig'l Quantity, ORIGINAL PROPRIETOR, WATER COURSE, No. of Acres of Land Classified (Arable & Plow Land, Meadow & Pasture Land, Uncultiv'd & Wood Land), Whole No. of Acres, Value per Acre, Total Value of Lands, Value of all Buildings (Houses, Mills, Other Buildings), Total Value of Lands and Buildings, Amount Added or Deducted by Co. Board of Equalization, Total Value as Equalized by Co. Board, Amount Added or Deducted by State Board of Equalization, Total Value as Equalized by State Board, REMARKS.

Southard J. D

Sager David

Stickney John

Skidmore Josiah

Smith Isaac J

Smith Rufus

Simmons Dorothy

Smith Job

Shirk Henry

Southard Lucrase

Shirk Daniel

Shirk Stephen

Stratton Elias

Scott Job

Sharpe Stephen

Total

map hasit 96

all to John Anthony Jan 7 1870

Assessment of Real Property in *Liberty* Township,

Union County, Ohio, for the Year 1870.

For Plats of all Lands described on this Page, see Page _____ of Plats.			DESCRIPTION OF PROPERTY.				No. of Acres of Land Classified.						Whole No. of Acres.	Value per Acre, excluding Buildings.	Total Value of Lands, excluding Buildings.	Value of all Buildings.			Total Value of Lands and Buildings.	Amount Added or Deducted by Co. Board of Equalization.		Total Value as Equalized by Co. Board.	Amount Added or Deducted by State Board of Equalization.		Total Value as Equalized by State Board.	REMARKS.
							Arable & Plow Land.	Meadow & Pasture Land.	Uncultivated & Wood Land.	Houses.	Mills.	Other Buildings.				Added Dollars.	Deducted Dollars.	Added Dollars.		Deducted Dollars.						
In Whose Name Assessed.	No. of Entry.	Orig'l Quantity.	ORIGINAL PROPRIETOR.	WATER COURSE.	Acres	H.	Acres	H.	Acres	H.	Acres	H.	Dollars.	Dollars.	Dollars.	Dollars.	Dollars.	Dollars.	Dollars.	Dollars.	Dollars.	Dollars.	Dollars.	Dollars.	Dollars.	Dollars.
Sharpe Ashtu	12402 12395 12427	523	J Galloway	Millerick	14		60		26				100	20	2000	250		125	2375		2375		285	2090		
Skidmore Alonzo	3443	1000	D. Duncan	Millerick	30		18		68				116	19	2204				2204		2204		264	1940		
Smith Elizabeth	5248 5266	1828	M Vaucl	Millerick	3		30		7				40	24	960				960		960		110	545		
Stirling S. J.	6776 6563	880	Duncan Martin	Millerick	6		12		14				184	24	438				438		438		52	386		
Skidmore M. B. Thompson	12388 12401	250	Shanks & McCann	Millerick									25													
" " " "	4815	1380	L Jones	" "	45		35		95				100	25	3,125	250		150	3,525		3,525		423	3102		
Skidmore Joseph	3443	1000	D Duncan	Millerick	4		8		28				40	14	560				560		560		67	493		
Scott Sarah J.	4815	1000	J Jones	Millerick					95				39	24	2,400				2,400		2,400		285	2112		
" " " "	12388 12401	200	Shanks & McCann	" "									61													
Seaward J. E.	12472	1600	M Vaucl	Millerick									14	200	50	250			300		300		36	264		
Shaw Harrison	5729	1000	R Means	Millerick	25		19		12	3/4			52 3/4	19	1078				1078		1078		130	948		
Shirk Aaron	5729	1000	R Means	Millerick	27		18		48				93	18	1,674	150			1,824		1,824		219	1605		
Shirk James	12283	1000	G Wilkinson	Millerick	13		1		30				52	18	936	300			1,236		1,236		148	1088		
Thompson A. H.	3481	700	S Bailey	Millerick	36		114		54 1/2				204 1/2	30	6,135	400		300	6,835		6,835		820	6015	has more	
" " " "	3444	1000	D Duncan	" "	20		71		30				121 1/2	21	2,541				2,541		2,541		305	2236		
Turner Samuel	4404	1333 1/3	B. Grimes	Millerick	34		124		60				218	20	4,360	150		150	4,660		4,660		559	4101		
Turner Addison	4404	1333 1/3	B. Grimes	Millerick	14		40		20				74	20	1,480	200			1,680		1,680		202	1478		
					Total		271	653 1/4	425	43 1/2			1358 3/4	204	28,741	1,830		225	32,616		32,616		3913	28,703		

Assessment of Real Property in *Liberty* Township,

Union County, Ohio, for the Year 1870.

For Plats of all Lands described on this Page, see Page _____ of Plats.	No. of Entry.	Orig'l Quantity.	DESCRIPTION OF PROPERTY.	WATER COURSE.	No. of Acres of Land Classified.						Whole No. of Acres.	Value per Acre, including Buildings.	Total Value of Lands, excluding Buildings.	Value of all Buildings.			Total Value of Lands and Buildings.	Amount Added or Deducted by Co. Board of Equalization.		Total Value as Equalized by Co. Board.	Amount Added or Deducted by State Board of Equalization.		Total Value as Equalized by State Board.	REMARKS.
					Arable & Plow Land.	Meadow & Pasture Land.	Uncultiv'd & Wood Land.	Acres.	H.	Acres.				H.	Acres.	H.		Houses.	Mills.		Other Buildings.	Added Dollars.		
Turner Martin	12472	1600	M Vance	Milleruck	5		15		6	1/4	38	17	446			446		446		574	392	12 th is as per to of Sealon		
Turner Harrison	5279	1000	R. Meaus	Milleruck	3		7		30		40	16	640			640		640		77	503			
Titus W. H. H.	6563 6770	800	D. McArthur	Milleruck	61		104		30	3/4	20 3/4	30	6052	150		6202		6202		744	5439			
Thomas Eliza	3440	1000	D. Duncan	Milleruck	13		12		18	3/4	48 1/4	21	1013	200	125	1338		1338		160	1178			
Thomas Webster L.	14735	400	Allan Latham	Milleruck			11		30		41	16	656			656		656		79	577			
Thomas Ross	3480 12493 7	100 1823	W. Wicker Rodgers & Co	Milleruck			34		68	20 3/4	59 63 3/4	20	1180 1275			1180 1275		1180 1275		142 153	1039 1122			
Toby Charles	3443	1000	D. Duncan	Milleruck	20		40		16		76	18	1368	250		1618		1618		184	1424			
Tatar Sarah	4408	300	B. Grimes	Milleruck			2				2	20	40			40		40		5	35			
Thompson Andrew H.	3480 3444	700 1000	S. Bailey D. Duncan	Milleruck						X	71 142	X				X							included in the 124 th	
Trott Abraham	5729	1000	R. Meaus	Milleruck	12		4		34		50	15	750			750		750		90	660			
Uggle Michael	5729 5729	1000 1000	Milleruck		3				18		21	11	350			350		350		42	308			
Walker Gustus	12472	1600	M Vance	Milleruck			1/4				1/4	300	60	250		300		300		36	260	Down		
Wilson W. J.	12472 3480	1600 700	M Vance S. Bailey	Milleruck	35		80		25 1/4		125 1/4 15	21	2630 315	350	100	3080 315		3080 315		280 58	2710 217			
Wilson William	3480	700	S. Bailey	Milleruck							2											Aprina in A. H. Thompson		
Wood David	12383 12403 12413 3462	1823 666	Rodgers & Co J. Scarborough	Milleruck	30		50		50 1/4		130 1/4 94	20	2605 94	300	300	3205		3205		385	2920	belongs with the 160 th all to Mrs Taylor map say 40 th		
Wood David Jr.	6563 6776	880	D. McArthur	Milleruck	20		10		5 3/4		26 3/4 23 1/2	20	715 1700	200	150	1065 22450		1065		128	937			
Total					247		403 1/4		288 1/4		935 1/4	16	20085	1700	615	22480		22460		2697	19763			

Assessment of Real Property in *Liberty* Township,

Union County, Ohio, for the Year 1870.

For Plats of all Lands described on this Page, see Page _____ of Plats.	No. of Entry.	Orig'l Quantity.	DESCRIPTION OF PROPERTY.	WATER COURSE.	No. of Acres of Land Classified.					
					Arable & Plow Land.		Meadow & Pasture Land.		Uncultiv'd & Wood Land.	
IN WHOSE NAME ASSESSED.			ORIGINAL PROPRIETOR.		Acres	H.	Acres	H.	Acres	H.
Uells Osmund	4404	1333 1/3	B. Jones	Milleruck	100		77 1/2			
Warner Abisha	12282	750	R. Dorsey	Milleruck	10		8		77	
Warner Miller	12282	750	R. Dorsey	Milleruck	5		30		55	
Walker John	12472	1600	M. Vance	Milleruck			1			
Uells Elisha ^{prop}	3467	666	Scarborough	Milleruck						
Uest F. R.	12283	1000	W. Wilkinson	Darbyrule					72 1/2	
Molford Omtha	12284	200	R. Means	Milleruck	78		33			
Winter Levi	⁵⁷⁷⁶ 5776	1028	R. Means	Milleruck	33		36		15	
Whaler Harry	5777	300	R. Means	Milleruck	44		107		50	
Ueston Eliza J.	5777	300	R. Means	Milleruck	5		44		20 1/2	
Uood James	5776	850	D. McArthur	Milleruck	26		36		1/2	
Warner Samuel	12428		Galoway	Parly					2 1/2	
Ueady John	5777	300	R. Means	Milleruck			20		23 1/2	
				Total	241		705		372 1/2	
<i>School House</i>										
District Sat	1		Cooks							
"	2		Shirks							
"	3		Warner							
"	4		Shelby							
"	5		Heaps							
"	6		Newton							
"	7		Sticks							
"	8		Hartshorn							
"	9		J. Turners							
<i>Churches</i>										
H. C. Newton			Church							
Bales & Christian Newton			Church							
Disciple Milleruck			Church							
United Brethren Flatwoods			Church with Graveyard							
Baughns			Grave yard							
Newton			Grave yard							
Disciple			Grave yard							
Henderson			Grave yard							

Whole No. of Acres.	Value per Acre of Buildings.	Total Value of Lands, excluding Buildings.	Value of all Buildings.			Total Value of Lands and Buildings.	Amount Added or Deducted by Co. Board of Equalization.		Total Value as Equalized by Co. Board.	Amount Added or Deducted by State Board of Equalization.		Total Value as Equalized by State Board.	REMARKS.
			Houses.	Mills.	Other Buildings.		Added Dollars.	Deducted Dollars.		Added Dollars.	Deducted Dollars.		
Acres.	H.	Dollars.	Dollars.	Dollars.	Dollars.	Dollars.	Dollars.	Dollars.	Dollars.	Dollars.	Dollars.	Dollars.	
643 1/2	25	16087	300		400	16837			16837			2020	14817
95	16	1520				1520			1520			182	1338
95	17	1615				1615			1615			194	1421
1	100	100	100		100	300			300			36	264 <i>Down</i>
92 1/2	15	1082				1082			1082			130	952
40	16	640				640			640			77	563 <i>has no road</i>
84	24	2016				2016			2016			242	1774
201	30	6030	250			6280			6280			754	5526
69 1/2	22	1529				1529			1529			183	1346
62 1/2	30	1875	200		200	2075			2275			273	2002
2 1/2	20	50				50			50			6	44
22	40	880	100		100	1100			1100			132	968 <i>all to B Glasco</i>
1388 1/2		33424	950		870	35244			35244			4229	31015
<i>School House</i>													
1/2		20	250			270							
1/2		20	250			270							
1/2		20	250			270							
1/2		20	250			270							
1/2		20	250			270							
1/2		50	400			450							
1/2		20	250			270							
1/2		20	250			270							
1/2		20	250			270							
Total			2400	Total		2610							
<i>Churches</i>													
1/2		50	1500			1550							
1/2		50	1500			1550							
1/2		20	1500			1520							
1/2		20	50			100							
Total			570	Total		5230							
2	40	80											
2	40	80											
1	25	25											
1	20	20	Total		205								

Assessment of Real Property in Township,

Union County, Ohio, for the Year 1870.

For Plats of all Lands described on this Page, see Page _____ of Plats.	DESCRIPTION OF PROPERTY.	No. of Acres of Land Classified.								
		Arable & Plow Land.		Meadow & Pasture Land.		Uncultiv'd & Wood Land.				
In Whose Name Assessed.	No. of Entry.	Orig'l Quantity.	ORIGINAL PROPRIETOR.	WATER COURSE.	Acres	H.	Acres	H.	Acres	H.
				<i>No Page</i>	1		214	593 1/4	320 1/4	
					2		388	798	87	
					3		347	805 3/4	579 1/2	
					4		270	439	531	
					5		377	800 1/4	798	
					6		457	845	720 1/2	
					7		315	663	713 1/2	
					8		425	602	1575	
					9		218	860 1/4	457 1/4	
					10		188 1/2	283	284 1/2	
					11		468	573 3/4	581 3/4	
					12		218	421 1/4	305	
					13		271	653 1/4	435	
					14		247	403 1/4	285 1/4	
					15		241	755	370 1/2	
				<i>Total</i>			4720	7444	1856	
				<i>Whole no acre</i>					23050	

Value of all Buildings.			Total Value of Lots and Buildings.	Amount Added or Deducted by Co. Board of Equalization.	Total Value as Equalized by Co. Board.	Amount Added or Deducted by State Board of Equalization.	Total Value as Equalized by State Board.	REMARKS.
Houses.	Mills.	Other Buildings.	Dollars.	Added Dollars.	Deducted Dollars.	Dollars.	Dollars.	
1500		950	25206			26365	3165	23200
1700		700	40007			39817	4777	35030
1750	100	700	38852			38752	4651	34101
1150	500	750	27141			27141	3257	23882
2050		1150	41162			41563	4987	36576
2250		1300	43960			43467	5208	38199
2000		573	35477			35487	4259	31228
3000		1300	55128			54098	6490	47688
1575		1750	29786			38726	4649	34078
850		949	16176			16176	1940	14238
2275		1370	39422			39440	4732	34708
1750		1035	23050			23445	2814	20631
1950		725	32616			32616	3913	28703
1700		675	22460			22460	2697	19763
950		870	35244			35244	4229	31015
						514722	61767	452955
			26500	600	14977	505677		
								<i>average per acre \$21.966</i>

214 593 1/4 320 1/4 15 23915 15

Class	Land	Water	Wood	Whole No	Value	Area	Mills	Other	Total Value	Remarks
Land	214	593 1/4	320 1/4	1127 1/2	23915	1500		950	26365	
Land	388	798	87 1/2	2023 3/4	37287	1700		850	39807	
Land	347 1/4	815 3/4	574 1/2	1757 1/2	36202	1750	100	700	38752	
Land	270	439	531	1240	24741	1150	500	750	27141	
Land	377	800 1/4	798	1977 3/4	38363	2050		1150	41563	
Land	457	845	720 1/2	2016 3/4	37857	2250		1300	43467	
Land	315	663	713 1/2	1691 1/2	32914	2000		573	35487	
Land	425	602	1575	2602	47744	3050		1300	54098	
Land	218	860 1/4	457 1/2	1615 3/4	33401	1575		1750	38726	
Land	188 1/2	283	284 1/2	781	14372	850		949	16176	
Land	468	573 3/4	581 3/4	1523 1/2	38785	2275		1370	39440	
Land	218	421 1/4	305	1021 1/4	20660	1750		1035	23445	
Land	271	653 1/4	435	1358 3/4	29941	1950		725	32616	
Land	247	403 1/4	285 1/4	935 1/2	20085	1700		675	22460	
Land	241	755	370 1/2	1385 1/2	33424	750		870	35244	
Total	4720 3/4	7444 1/4	1856 1/4	23051 1/4	472675	26500		600	14977	514722
Total	4720 3/4	7444 1/4	1856 1/4	23051 1/4	472675	26500		600	14977	514722

545245
 520262
 24993
 4720 3/4
 26500
 14977
 514722
 46700
 5810

Assessment of Lots in the Town of Newtown

For Plats of all Lots described on this Page, see Page _____ of Plats.	DESCRIPTION OF PROPERTY.						Value of Lots. Dollars.	Value of all Buildings.			Total Value of Lots and Buildings. Dollars.	Amount Added or Deducted by Co. Board of Equalization.		Total Value as Equalized by Co. Board. Dollars.	Amount Added or Deducted by State Board of Equalization.		Total Value as Equalized by State Board. Dollars.	REMARKS.	
	In Whose Name Assessed.	Addition.	No. of In-Lot.	No. of Out-Lot.	WHAT PART OF LOT.	No. Feet Front.		No. Feet Depth.	Houses.	Mills.		Other Buildings.	Added Dollars.		Deducted Dollars.	Added Dollars.			Deducted Dollars.
Burkum Stephen		16		W 3/4			25	150		100	275			275	33		242	J.P. Starling owns 7/8 lot 18	
Barlow Margret		26		all			60	500			550			550	66		484		
Barrett Robert W		9		W 3/8 -															
✓ ✓ ✓		10		E 3/8 -															
Sawyer W.B		21		all			60	250			300			300	36		264		
Hammund Ezekiel		16		E 1/2 1/4			25				25			25	3		22	owns only 1/4 of 18	
✓ ✓		17		1/10 of S side W corner			5	475			500			500	60		140		
✓ ✓		18		✓			60	400	100		500			500	66		484	Owned by O Taylor	
Hill Levi		10		W 3/8 -			20	330			350			350	42		308		
Hill Geoff		24		all			60	275			325			325	39		296		
Hartshorn John		2		✓			60	250		100	300			300	36		264		
Hubbard J.R. & S. & J.		9		E 3/8 -			30	250		120	400			400	47		413		
Lockwood Amos G		3		all			60	150		100	300			300	36		264		
Manchester & Co		8		all			60	250		100	400			400	48		352	all to Bayly & Bros	
Manchester P		13		✓			60	250		100	400			400	48		352	the barn and part lot 18 owned	
✓ ✓		14		✓			60	500			550			550	102		748		
Paul David S		11		all			60	200		150	400			400	48		352	all to J.W. Bayley	
Simmons W.R		4		all			60	50		50	150			150	18		132		
Spies William		12		✓			60	100			150			150	18		132	all to O Anthony	
Stratton Elias		13		all			60	200		100	350			350	42		308		
Smith Rufus		9		Parr			15	485			500			500	60		440		
Shirk Henry		22		all			60	200			250			250	30		220		
Taylor Washington		1		all			60	300			350			350	42		308	all to L Griffin	
✓ ✓		19		✓			60	250		100	400			400	48		352		
✓ ✓		20		✓			60				50			50	6		44		
Upton Eliza J		17		1/10			40	700		110	850			850	102		748		
Whittaker Emanuel		23		all			60	120			150			150	18		132		
Williams Mary J		9		W 3/8 -			20			100	120			120	14		106		
✓ ✓ ✓		10		E 3/8 -			30	350			380			380	45		335		
Bault R.W		5		all			60				50			50	6		44		
✓		6		all			60	150		100	350			350	30		320		
				Total			1185	7450	1300		9975			9975	1172				
														9995	1199		8790		

**LIBERTY TP.
UNION COUNTY
1870**