

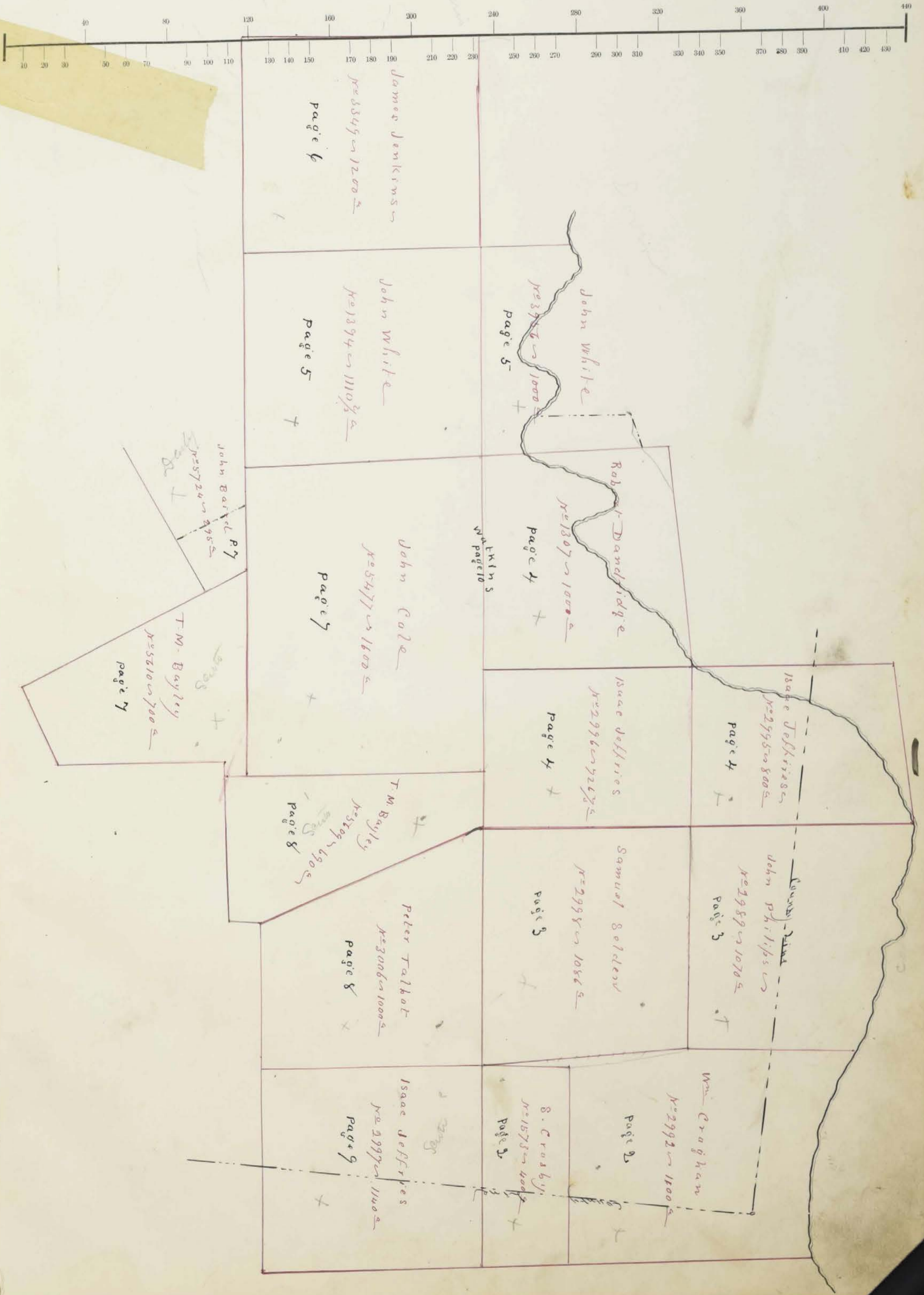
**MILL CREEK TP.
UNION COUNTY
1870**

Section, No.

Lot

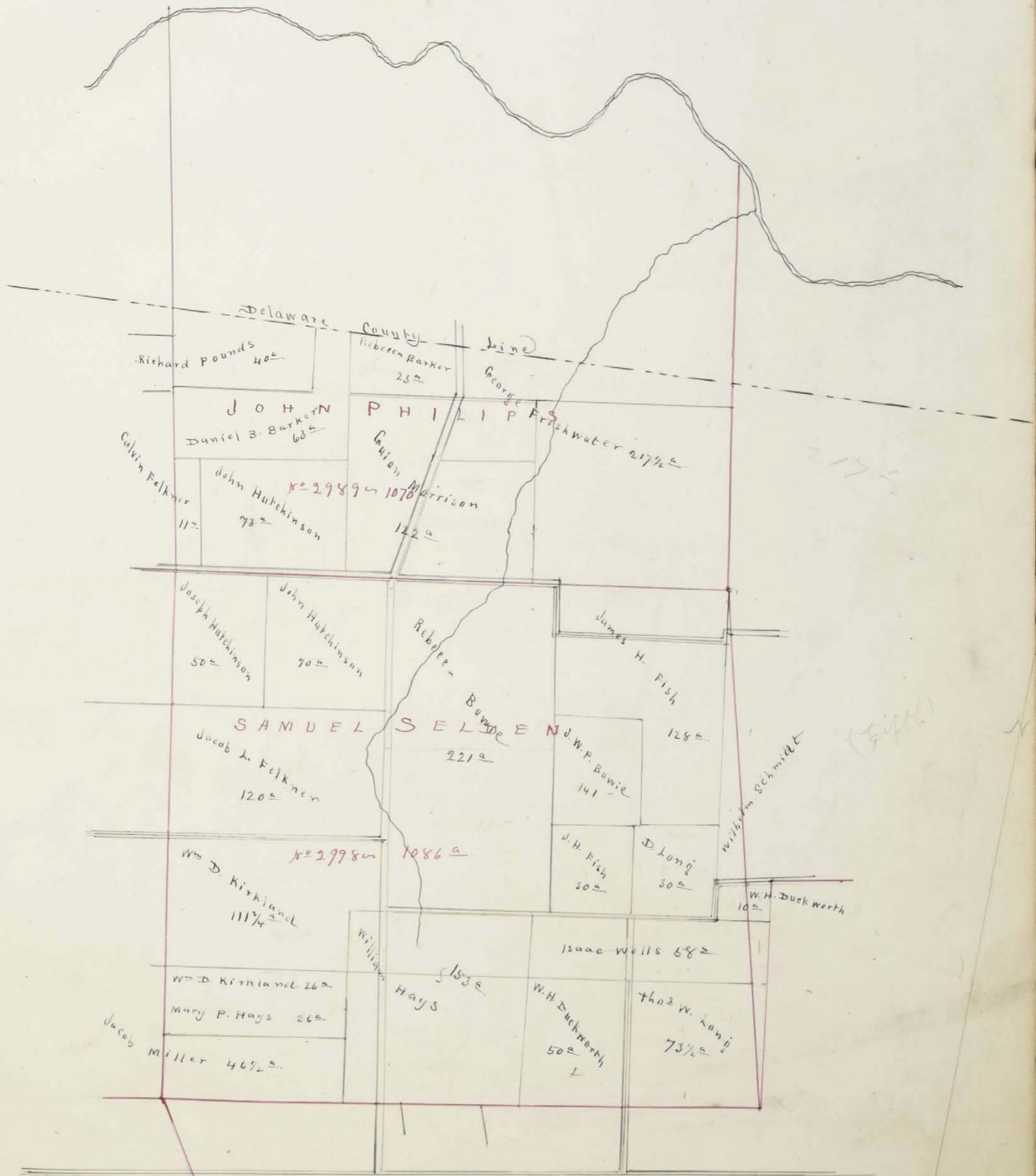
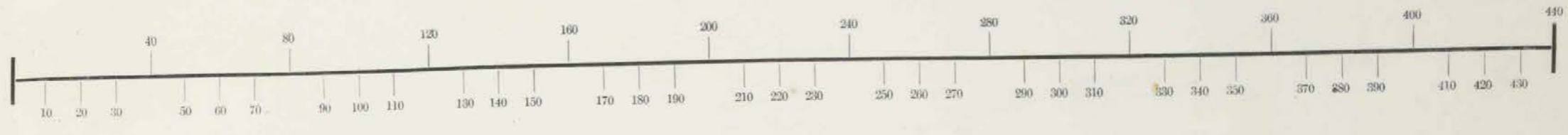
Scale, 40 Rods to an Inch, or 10 Rods to 1-4 Inch.

Millerick



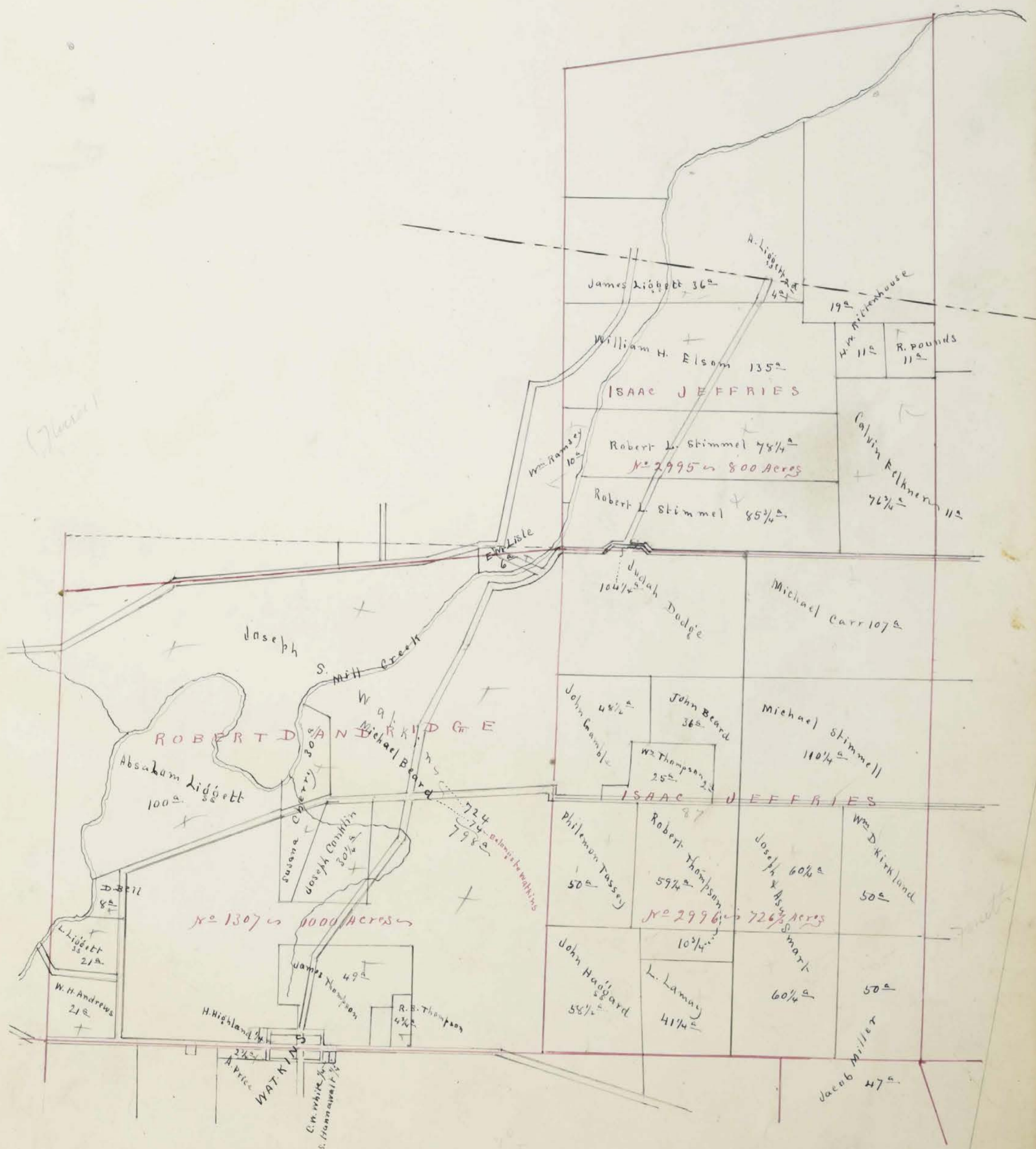
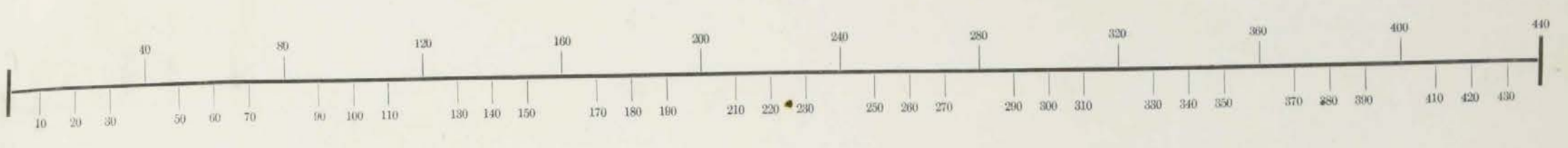
Survey Section, No. 2989 Lot And 2998

Scale, ⁸⁰40 Rods to an Inch, or ²⁰10 Rods to 1-4 Inch.



Survey Section, No. 1307 Lot And 2995 And 2996

Scale, ⁸⁰40 Rods to an Inch, or ²⁰10 Rods to 1-4 Inch.

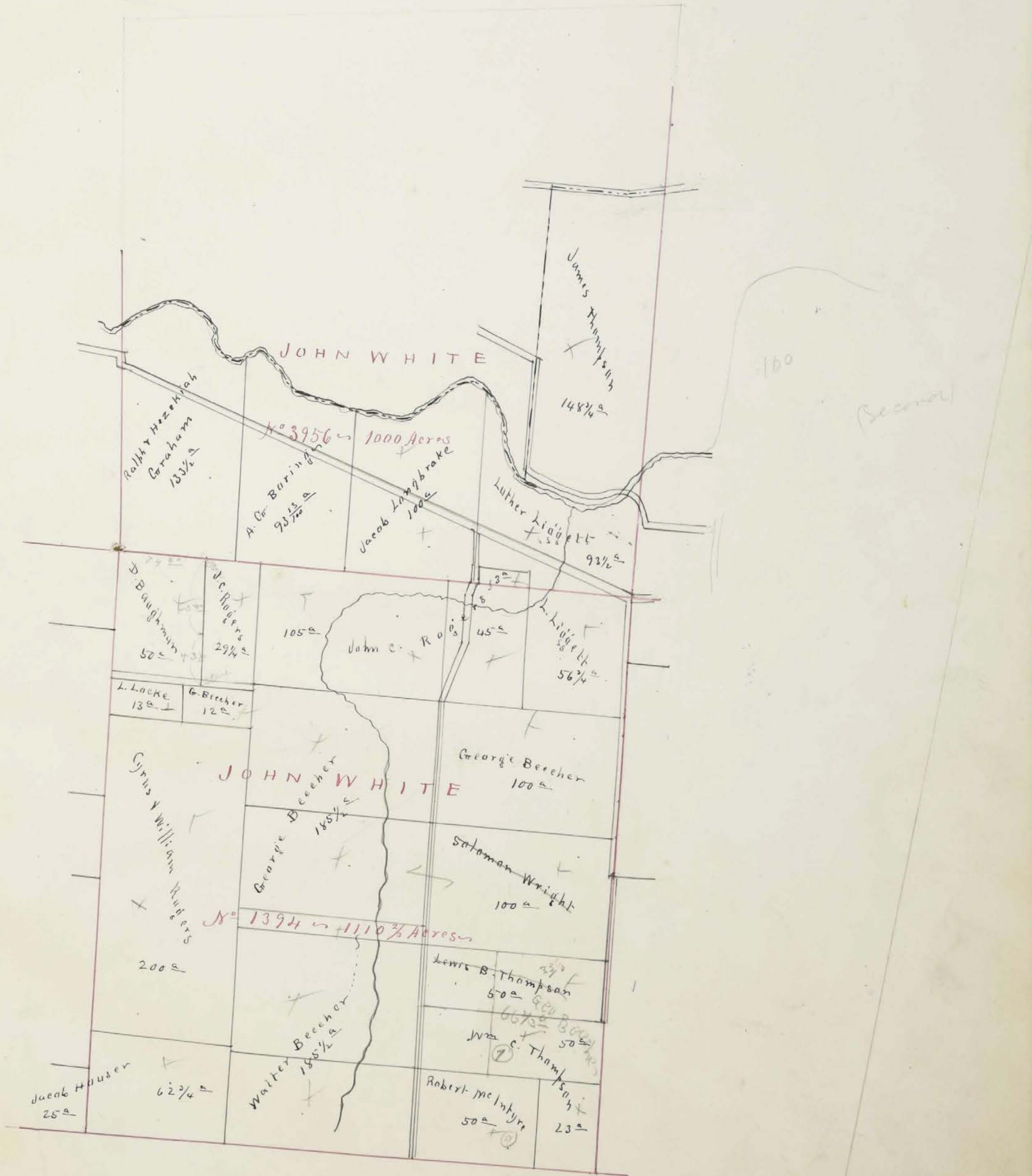
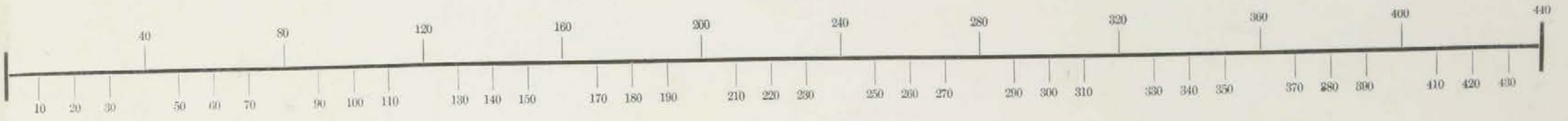


Glacier

Handwritten calculations and notes:
 $40 \times 200 = 8000$
 $10 \times 800 = 8000$
 $40 \times 20 = 800$
 $10 \times 80 = 800$

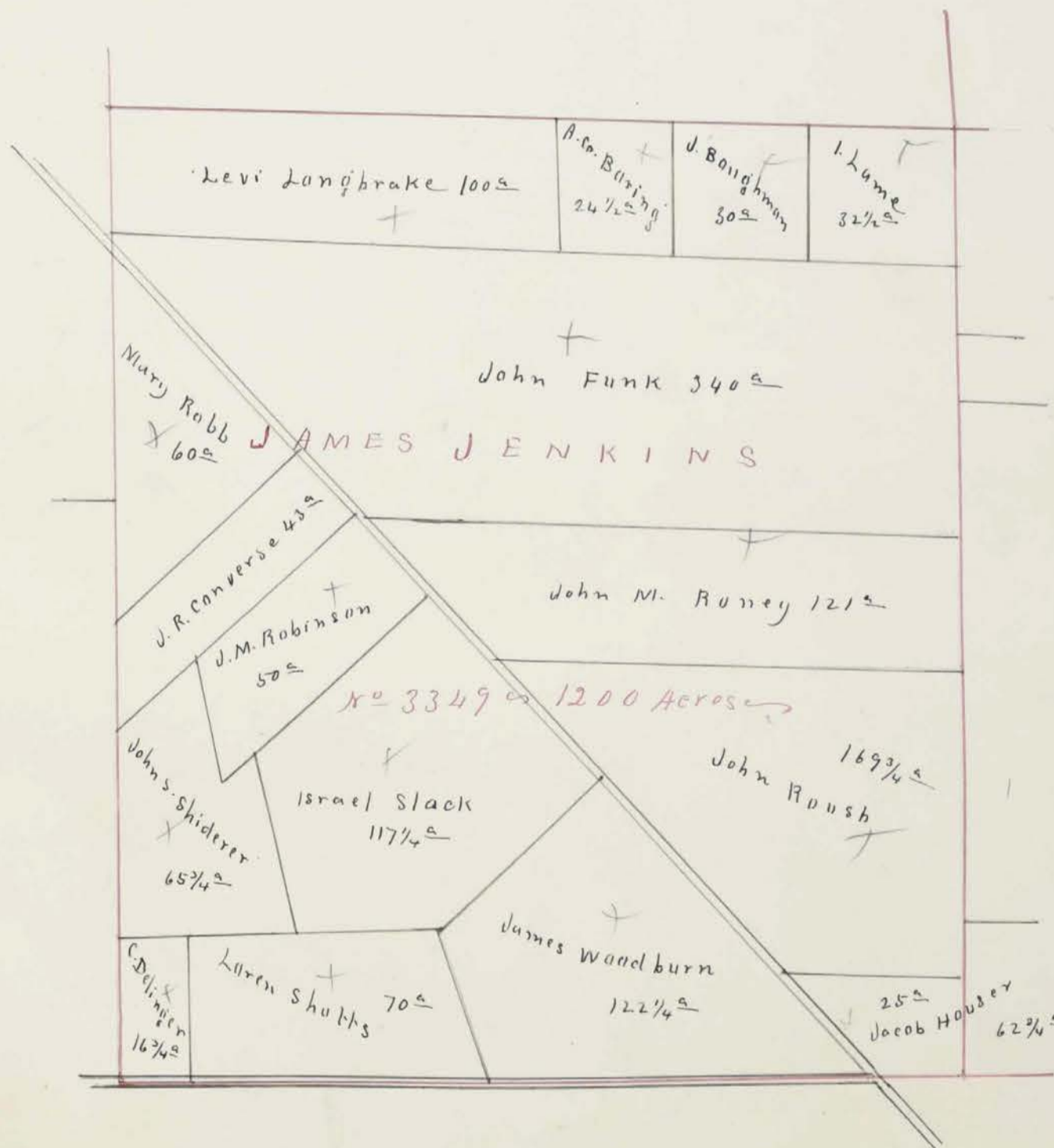
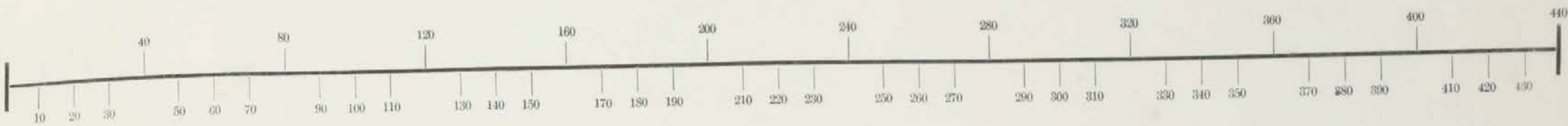
Survey Section, No. 3956 Lot And 1394

Scale, ⁸⁰40 Rods to an Inch, or ²⁰10 Rods to 1-4 Inch.



Survey Section, No. 3349 Lot

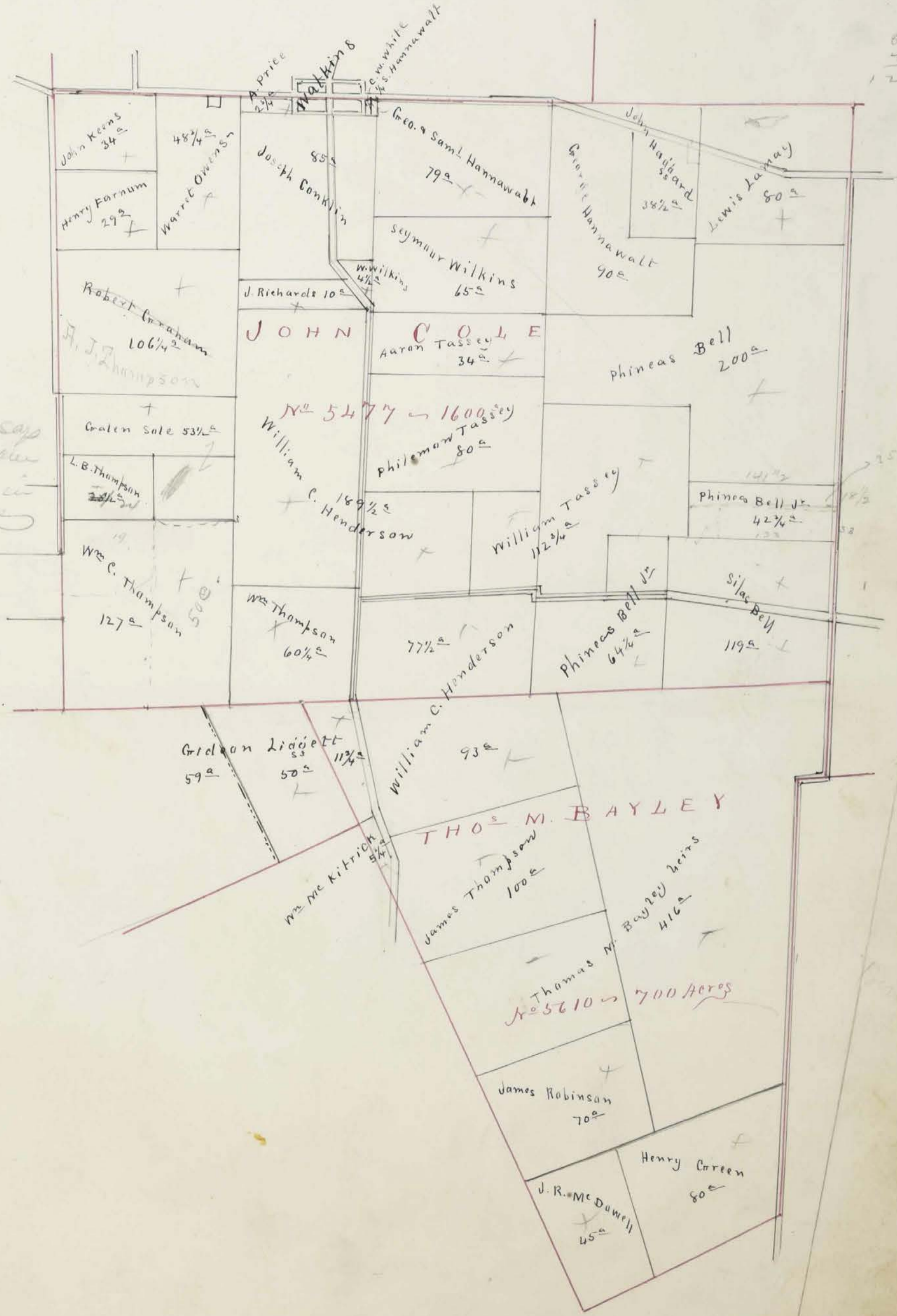
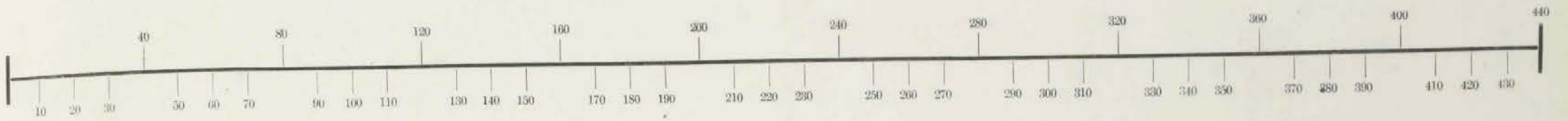
Scale, ⁸⁰40 Rods to an Inch, or ²⁰10 Rods to 1-4 Inch.



First

Survey
Section, No. 5477 And Lot 5610

Scale, ⁸⁰40 Rods to an Inch, or ²⁰10 Rods to 1-4 Inch.



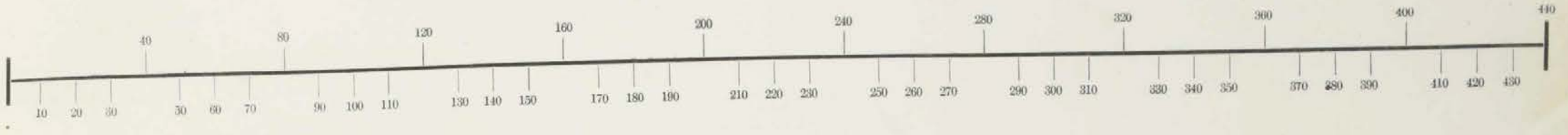
Galen Soble says
that the 23 1/2 a
is included in
this 53 a

60
41
121 1/4

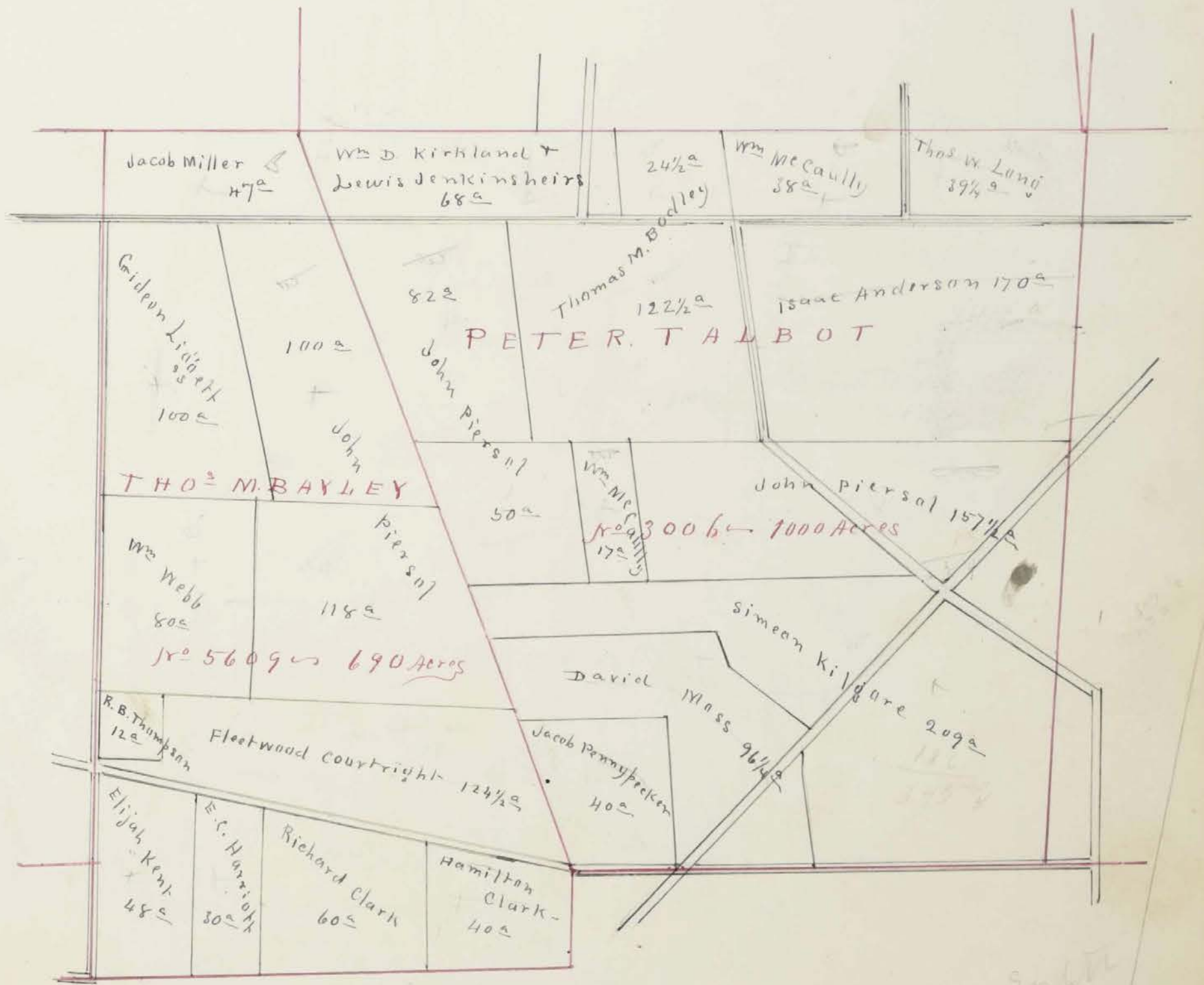
225-634

Survey Section, No. 5609 of Lot 3006

Scale, ⁸⁰40 Rods to an Inch, or ²⁰10 Rods to 1-4 Inch.



Page 5-7374



120
110

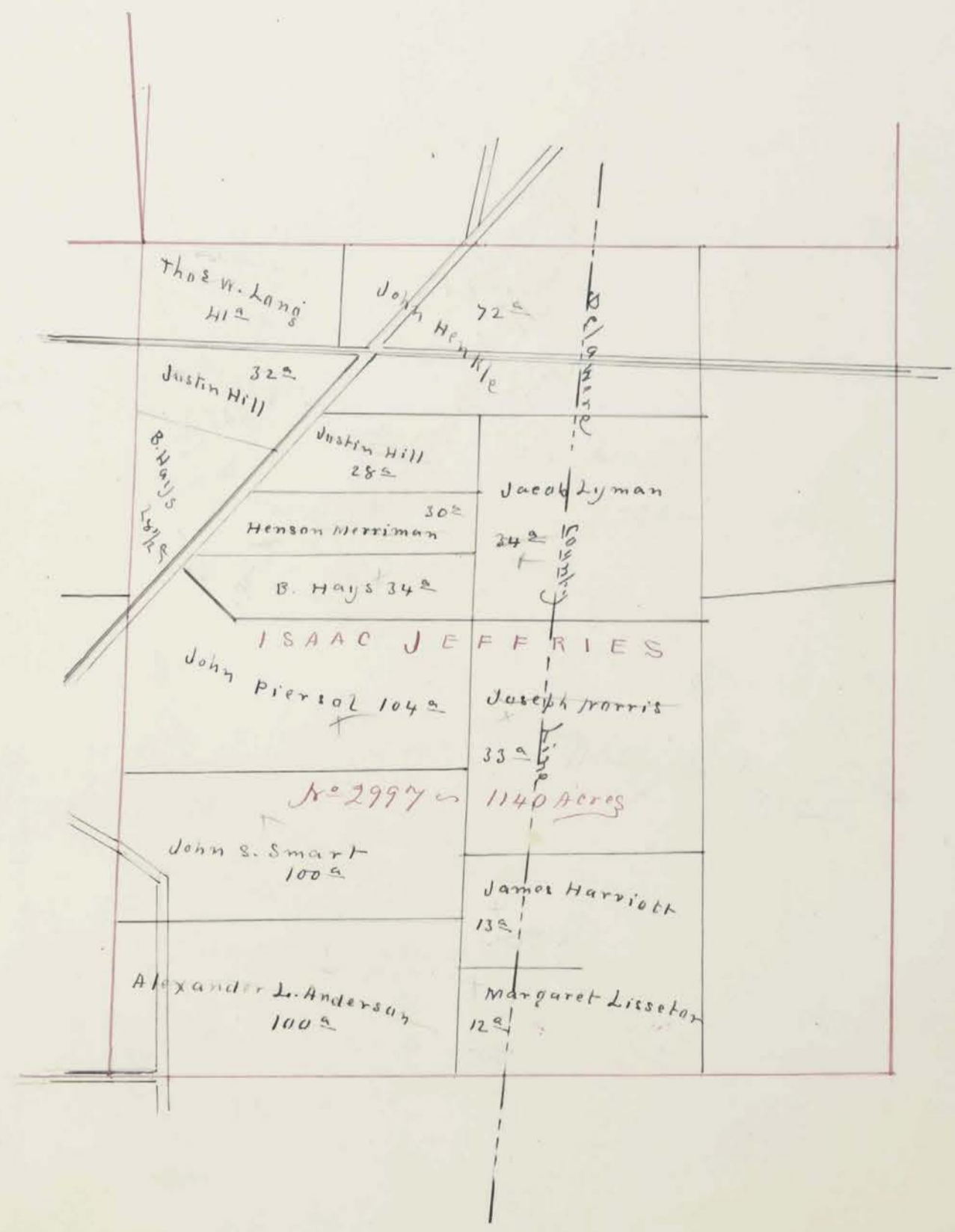
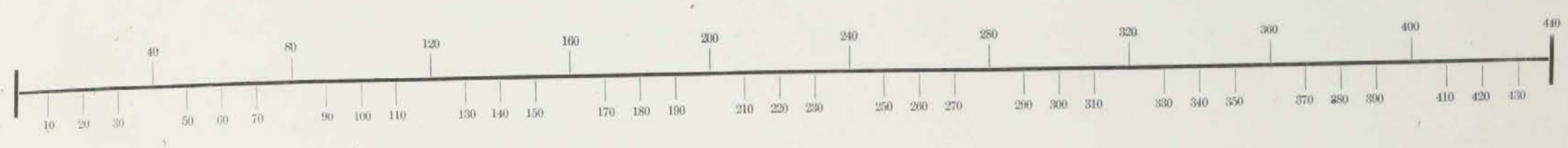
170
85
110

47 1/2
20
44 1/2

106
110
450
424
560
520
800

Survey
Section, No. 2997 Lot

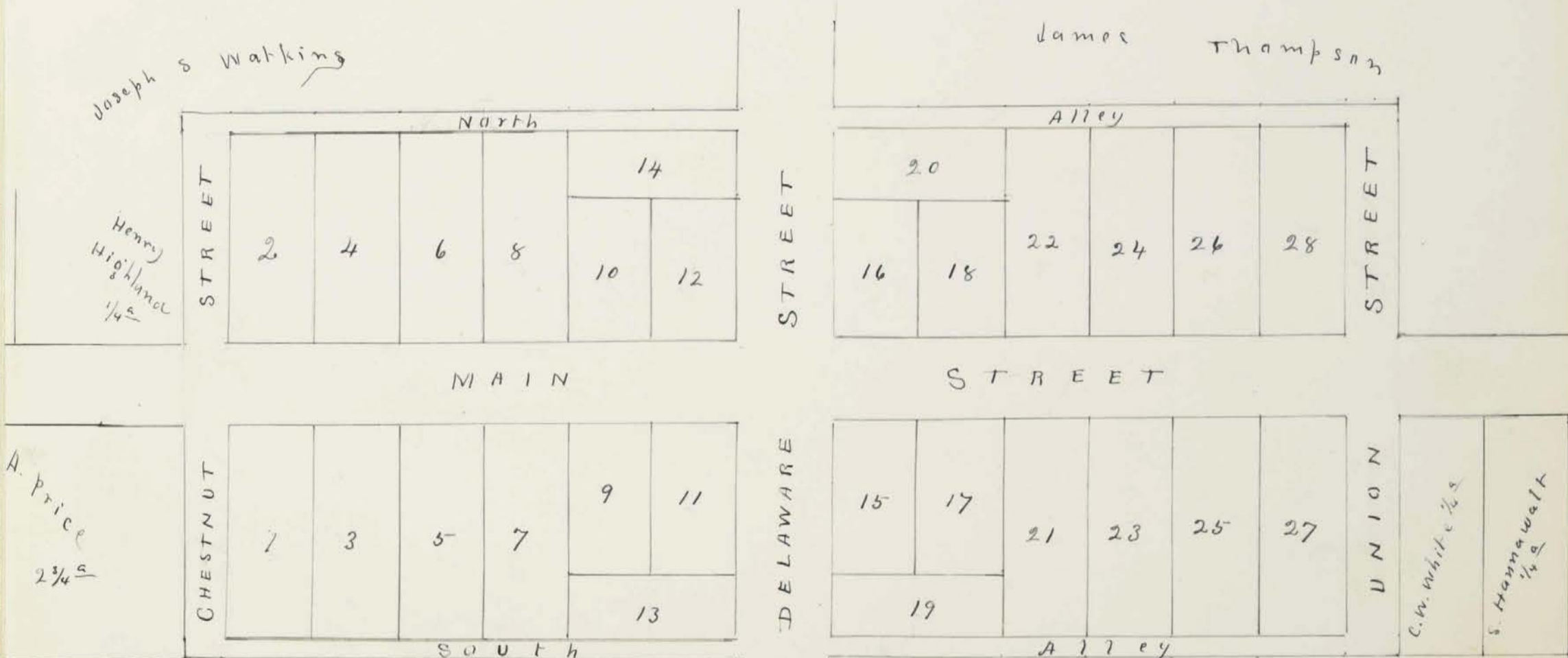
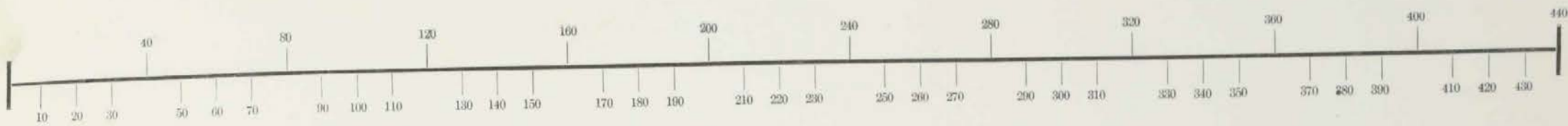
Scale, ⁸⁰40 Rods to an Inch, or ²⁰10 Rods to 1-4 Inch.



See Page 2

Section, No. _____ Lot _____

Scale, 40 Rods to an Inch, or 10 Rods to 1-4 Inch.



TOWN OF WATKINS
 Union County Ohio

Assessment of Real Property in *Millerick* Township,

Union County, Ohio, for the Year 1870.

For Plats of all Lands described on this Page, see Page _____ of Plats.			DESCRIPTION OF PROPERTY.	No. of Acres of Land Classified.						Whole No. of Acres.	Value per Acre including Buildings.	Total Value of Lands, excluding Buildings.	Value of all Buildings.			Total Value of Lands and Buildings.	Amount Added or Deducted by Co. Board of Equalization.		Total Value as Equalized by Co. Board.	Amount Added or Deducted by State Board of Equalization.		Total Value as Equalized by State Board.	REMARKS.
In Whose Name Assessed.	No. of Entry.	Orig'l Quantity.		ORIGINAL PROPRIETOR.	WATER COURSE.	Arable & Plow Land.	Meadow & Pasture Land.	Uncultivated & Wood Land.	Houses.				Mills.	Other Buildings.	Added Dollars.		Deducted Dollars.	Added Dollars.		Deducted Dollars.			
<i>Fellner Calvin</i>	2989	1070	<i>John Phillips</i>	<i>Millerick</i>	11				11	28	308			308			308	37	271				
<i>Fellner Calvin</i>	2995	800	<i>J. Jeffries</i>	<i>Millerick</i>	34	20	22 3/4		76 3/4	27	2072	150		2222			2222	267	1955				
<i>Fellner Jacob L</i>	2998	1086	<i>Saml Seldon</i>	<i>Millerick</i>	50	50	20		120	27	3240	400	200	3840			3840	461	3379				
<i>Fish James H</i>	2998	1086	<i>Saml Seldon</i>	<i>Millerick</i>	68	80	40		188	28	3950	100	100	4150			4150	498	3652				
<i>Freshwater George</i>	2989	1070	<i>John Phillips</i>	<i>Millerick</i>	50	63	104 1/2		217 1/2	28	6083			6083			6083	230	5353				
<i>Garman Henry</i>	5477	1600	<i>John Cole</i>	<i>Millerick</i>	14	13			27	23	667			667			667	80	587	Belongs to Christian Eschen			
<i>Grant John</i>	3349	1208	<i>J. M. Jenkins</i>	<i>Millerick</i>	100	43	197		340	25	8500	100		8600			8600	1030	7570				
<i>Grant John</i>	2992	1100	<i>W. Cozham</i>	<i>Millerick</i>	2				2	27	54			54			54	7	47				
<i>Graham Robert</i>	5477	1600	<i>John Cole</i>	<i>Millerick</i>	46	85	28 1/2		106 1/2	26	2762	100		2862			2862	346	2518	Belongs to A.P. Thompson			
<i>Graham Robert</i>	5610	700	<i>J. M. Bailey</i>	<i>Millerick</i>			10		10	17	170			170			170	20	149				
<i>Green Henry</i>	5610	700	<i>J. M. Bailey</i>	<i>Millerick</i>	12		68		80	17	1360			1360			1360	163	1197				
<i>Graham Ralph</i>	3956	1000	<i>John White</i>	<i>Millerick</i>	28	35	26 1/2		99 1/2	27	2686	200		2886			2886	346	2540				
<i>Graham Stephen</i>	3956	1000	<i>John White</i>	<i>Millerick</i>	12	18	5 1/2		32 1/2	27	877			877			877	105	772				
<i>Gamble John</i>	2996	726	<i>J. Jeffries</i>	<i>Millerick</i>	19	6	28 1/2		48 1/2	20	970	100		1070			1070	128	942	Heirs			
<i>Hutchinson Joseph</i>	2998	1086	<i>Saml Seldon</i>	<i>Millerick</i>	28	8	14		50	25	1250			1250			1250	150	1100				
<i>Hays William</i>	2998	1086	<i>Saml Seldon</i>	<i>Millerick</i>	61	39	83		153	26	3978	200	150	4328			4328	519	3809				
<i>Hays Mary P</i>	2998	1086	<i>Saml Seldon</i>	<i>Millerick</i>	13		13		26	22	572			572			572	69	503				
<i>Hutchinson John</i>	2998	1086	<i>Saml Seldon</i>	<i>Millerick</i>	38	82			70	27	1890	200	200	2290			2290	275	2015				
<i>Hutchinson John</i>	2989	1070	<i>John Phillips</i>	<i>Millerick</i>	19	25	30		73	28	2044			2044			2044	245	1799				
<i>Hanawalt Samuel</i>	5477	1600	<i>John Cole</i>	<i>Millerick</i>					4	80	7	80		57			57	7	50				
<i>Hanawalt George</i>	5477	1600	<i>John Cole</i>	<i>Millerick</i>	34	16	40		90	27	2430	160		2590			2590	310	2270				
<i>Henderson W. C.</i>	5477	1600	<i>John Cole</i>	<i>Millerick</i>	90	146	31		267	27	7209		200	7409			7409	889	6520				
<i>Henderson W. C.</i>	5610	700	<i>J. M. Bailey</i>	<i>Millerick</i>			93		93	17	1581			1581			1581	190	1391				
<i>Hanawalt George W. Han</i>	5477	1600	<i>John Cole</i>	<i>Millerick</i>	47	32			79	27	2133	100		2233			2233	268	1965				
					777	635	817		2232		56793	1850	850	59493			59493	7139	52354				

Assessment of Real Property in *Miller* Township,

Union County, Ohio, for the Year 1870.

For Plats of all Lands described on this Page, see Page _____ of Plats.			DESCRIPTION OF PROPERTY.				No. of Acres of Land Classified.					Whole No. of Acres.	Value per Acre excluding Buildings.	Total Value of Lands, excluding Buildings.	Value of all Buildings.			Total Value of Lands and Buildings.	Amount Added or Deducted by Co. Board of Equalization.		Total Value as Equalized by Co. Board.	Amount Added or Deducted by State Board of Equalization.		Total Value as Equalized by State Board.	REMARKS.
In Whose Name Assessed.	No. of Entry.	Orig'l Quantity.	ORIGINAL PROPRIETOR.	WATER COURSE.	Arable & Plow Land.	Meadow & Pasture Land.	Uncultivat'd & Wood Land.	Acres.	H.	Acres.	H.				Acres.	H.	Houses.		Mills.	Other Buildings.		Added Dollars.	Deducted Dollars.		
<i>Haggard John</i>	<i>5477</i>	<i>1600</i>	<i>John Cole</i>	<i>Miller</i>	<i>10</i>	<i>20</i>	<i>8 1/2</i>	<i>38 1/2</i>	<i>27</i>	<i>1039</i>	<i>100</i>			<i>1139</i>					<i>1139</i>	<i>137</i>	<i>1002</i>				
<i>J. Jeffris</i>	<i>2996</i>	<i>720</i>	<i>J. Jeffris</i>	<i>Miller</i>	<i>38</i>	<i>10</i>	<i>14 1/4</i>	<i>59 1/4</i>	<i>26</i>	<i>1540</i>				<i>1540</i>					<i>1540</i>	<i>185</i>	<i>1355</i>				
<i>Hays B</i>	<i>3999</i>	<i>720</i>	<i>J. Jeffris</i>	<i>Miller</i>	<i>20</i>	<i>27</i>	<i>18 1/2</i>	<i>65 1/2</i>	<i>25</i>	<i>1562</i>	<i>150</i>	<i>100</i>	<i>1812</i>						<i>1812</i>	<i>217</i>	<i>1595</i>				
<i>Hammitt James</i>	<i>3999</i>	<i>720</i>	<i>J. Jeffris</i>	<i>Miller</i>	<i>3</i>		<i>10</i>	<i>13</i>	<i>24</i>	<i>312</i>			<i>312</i>						<i>312</i>	<i>37</i>	<i>275</i>				
<i>Hill Justice</i>	<i>2999</i>	<i>720</i>	<i>J. Jeffris</i>	<i>Miller</i>	<i>30</i>	<i>20</i>	<i>10</i>	<i>60</i>	<i>24</i>	<i>1440</i>	<i>150</i>		<i>1590</i>						<i>1590</i>	<i>191</i>	<i>1399</i>	<i>Buildings on edge of lot 3/4 P. Colgar 3/4 acres</i>			
<i>Hinkle John</i>	<i>2997</i>	<i>1140</i>	<i>J. Jeffris</i>	<i>Miller</i>	<i>28</i>	<i>8</i>	<i>39</i>	<i>72</i>	<i>24</i>	<i>1728</i>	<i>150</i>		<i>1878</i>						<i>1878</i>	<i>225</i>	<i>1653</i>				
<i>Highland Henry</i>	<i>1307</i>	<i>1000</i>	<i>R. Daudrige</i>	<i>Miller</i>			<i>1/4</i>	<i>1/4</i>	<i>80</i>	<i>7</i>	<i>50</i>		<i>57</i>						<i>57</i>	<i>7</i>	<i>50</i>				
<i>Houser Jacob A</i>	<i>3349</i>	<i>1200</i>	<i>J. Franklin</i>	<i>Miller</i>	<i>15</i>		<i>10</i>	<i>25</i>	<i>22</i>	<i>550</i>			<i>550</i>						<i>550</i>	<i>66</i>	<i>484</i>				
<i>John White</i>	<i>1394</i>	<i>1100</i>	<i>John White</i>	<i>Miller</i>	<i>10</i>	<i>10</i>	<i>42 1/4</i>	<i>62 1/4</i>	<i>20</i>	<i>1255</i>			<i>1255</i>						<i>1255</i>	<i>157</i>	<i>1104</i>				
<i>Harrist Elviger C</i>	<i>5609</i>	<i>700</i>	<i>J. M. Bailey</i>	<i>Miller</i>			<i>80</i>	<i>30</i>	<i>17</i>	<i>510</i>			<i>510</i>						<i>510</i>	<i>61</i>	<i>449</i>				
<i>Jenkins Lewis L</i>	<i>3006</i>	<i>1000</i>	<i>P. Lalbot</i>	<i>Miller</i>	<i>17</i>	<i>18</i>	<i>7 1/2</i>	<i>39 1/2</i>	<i>24</i>	<i>948</i>	<i>200</i>		<i>1148</i>						<i>1148</i>	<i>138</i>	<i>1010</i>				
<i>Kirkland W D</i>	<i>2998</i>	<i>1086</i>	<i>Sam Seldan</i>	<i>Miller</i>	<i>45</i>	<i>82</i>	<i>60</i>	<i>137</i>	<i>27</i>	<i>3699</i>	<i>300</i>	<i>150</i>	<i>4149</i>						<i>4149</i>	<i>498</i>	<i>3651</i>				
<i>J. Lalbot</i>	<i>3006</i>	<i>1000</i>	<i>J. Lalbot</i>	<i>Miller</i>	<i>17</i>	<i>11</i>	<i>2 3/4</i>	<i>30 3/4</i>	<i>25</i>	<i>768</i>			<i>768</i>						<i>768</i>	<i>92</i>	<i>676</i>				
<i>J. Jeffris</i>	<i>2996</i>	<i>726</i>	<i>J. Jeffris</i>	<i>Miller</i>	<i>16</i>	<i>34</i>		<i>50</i>	<i>26</i>	<i>1300</i>			<i>1300</i>						<i>1300</i>	<i>156</i>	<i>1144</i>				
<i>Kear John</i>	<i>5477</i>	<i>1600</i>	<i>John Cole</i>	<i>Miller</i>	<i>16</i>	<i>18</i>		<i>34</i>	<i>27</i>	<i>918</i>			<i>918</i>						<i>918</i>	<i>110</i>	<i>808</i>	<i>Belongs to Christian Graham</i>			
<i>Kent Elijah</i>	<i>5609</i>	<i>690</i>	<i>J. M. Bailey</i>	<i>Miller</i>	<i>6</i>		<i>42</i>	<i>48</i>	<i>17</i>	<i>816</i>		<i>500</i>	<i>1316</i>						<i>1316</i>	<i>159</i>	<i>1158</i>	<i>to H. L. Brown</i>			
<i>Kirkland George B</i>	<i>1573</i>	<i>400</i>	<i>S. Crosby</i>	<i>Miller</i>	<i>12</i>		<i>1 1/4</i>	<i>13 1/4</i>	<i>25</i>	<i>331</i>			<i>331</i>						<i>331</i>	<i>40</i>	<i>291</i>	<i>Belongs to Joseph Morris</i>			
<i>Kilgore James</i>	<i>3006</i>	<i>1000</i>	<i>P. Lalbot</i>	<i>Miller</i>	<i>18</i>	<i>130</i>	<i>61</i>	<i>247</i>	<i>27</i>	<i>5643</i>	<i>400</i>	<i>100</i>	<i>6143</i>						<i>6143</i>	<i>737</i>	<i>5406</i>	<i>Belongs to H. L. Brown</i>			
<i>Long Daniel</i>	<i>2992</i>	<i>1000</i>	<i>W. Crepham</i>	<i>Miller</i>		<i>10</i>		<i>10</i>	<i>24</i>	<i>240</i>	<i>100</i>		<i>340</i>						<i>340</i>	<i>41</i>	<i>299</i>				
<i>S. Crosby</i>	<i>1573</i>	<i>400</i>	<i>S. Crosby</i>	<i>Miller</i>	<i>46</i>	<i>10</i>		<i>56</i>	<i>28</i>	<i>1400</i>	<i>100</i>		<i>1500</i>						<i>1500</i>	<i>180</i>	<i>1320</i>				
<i>Sam Seldan</i>	<i>2998</i>	<i>1084</i>	<i>Sam Seldan</i>	<i>Miller</i>			<i>30</i>	<i>30</i>	<i>24</i>	<i>720</i>			<i>720</i>						<i>720</i>	<i>86</i>	<i>634</i>				
<i>Long James H</i>	<i>2998</i>	<i>1084</i>	<i>Sam Seldan</i>	<i>Miller</i>	<i>35</i>		<i>38 1/2</i>	<i>73 1/2</i>	<i>24</i>	<i>1764</i>			<i>1764</i>						<i>1764</i>	<i>212</i>	<i>1552</i>				
<i>J. Jeffris</i>	<i>2997</i>	<i>1140</i>	<i>J. Jeffris</i>	<i>Miller</i>	<i>12</i>	<i>19</i>	<i>10</i>	<i>41</i>	<i>28</i>	<i>1028</i>	<i>800</i>		<i>1828</i>						<i>1828</i>	<i>219</i>	<i>1606</i>				
<i>P. Lalbot</i>	<i>3006</i>	<i>1000</i>	<i>P. Lalbot</i>	<i>Miller</i>	<i>19</i>		<i>20 1/4</i>	<i>39 1/4</i>	<i>24</i>	<i>942</i>			<i>942</i>						<i>942</i>	<i>104</i>	<i>838</i>				
<i>S. Crosby</i>	<i>1573</i>	<i>400</i>	<i>S. Crosby</i>	<i>Miller</i>	<i>48</i>	<i>68</i>	<i>2 1/2</i>	<i>112 1/2</i>	<i>26</i>	<i>2928</i>	<i>100</i>		<i>3028</i>						<i>3028</i>	<i>363</i>	<i>2662</i>				
					<i>455</i>	<i>436</i>	<i>456</i>	<i>1347</i>		<i>13982</i>	<i>2600</i>	<i>500</i>	<i>350</i>	<i>36692</i>					<i>36882</i>	<i>4408</i>	<i>32413</i>				

Assessment of Real Property in *Milleruk* Township,

Union County, Ohio, for the Year 1870.

For Plats of all Lands described on this Page, see Page _____ of Plats.			DESCRIPTION OF PROPERTY.		No. of Acres of Land Classified.						
IN WHOSE NAME ASSESSED.	No. of Entry.	Orig'l Quantity.	ORIGINAL PROPRIETOR.	WATER COURSE.	Arable & Plow Land.		Meadow & Pasture Land.		Uncultiv'd & Wood Land.		
Acres.	H.	Acres.	H.	Acres.	H.	Acres.	H.	Acres.	H.	Acres.	H.
<i>Lisle Eli M</i>	<i>1307</i>	<i>1000</i>	<i>R Daudrige</i>	<i>Milleruk</i>	<i>2</i>					<i>4</i>	
<i>Liggett Absalom</i>	<i>1307</i>	<i>1000</i>	<i>R Daudrige</i>	<i>Milleruk</i>	<i>23</i>	<i>40</i>				<i>87</i>	
<i>Liggett Absalom</i>	<i>2995</i>	<i>800</i>	<i>J Jeffers</i>	<i>Milleruk</i>	<i>4</i>						
<i>Liggett James</i>	<i>2995</i>	<i>800</i>	<i>J Jeffers</i>	<i>Milleruk</i>	<i>23</i>	<i>11</i>					
<i>Lyman Jaesb</i>	<i>2997</i>	<i>1140</i>	<i>J Jeffers</i>	<i>Milleruk</i>	<i>10</i>					<i>24</i>	
<i>Lyman Daniel</i>	<i>1573</i>	<i>400</i>	<i>S Crosby</i>	<i>Milleruk</i>						<i>4</i>	
<i>Liggett Luther</i>	<i>3956</i>	<i>1000</i>	<i>John White</i>	<i>Milleruk</i>	<i>28</i>	<i>48</i>				<i>28 1/2</i>	
	<i>1394</i>	<i>110</i>			<i>48</i>					<i>8 3/4</i>	
	<i>1307</i>	<i>1000</i>	<i>R Daudrige</i>		<i>18</i>					<i>6</i>	
<i>Liggett Gidens</i>	<i>5609</i>	<i>690</i>	<i>J. M. Bailey</i>	<i>Milleruk</i>	<i>50</i>					<i>30</i>	
	<i>5610</i>	<i>700</i>								<i>11 3/4</i>	
<i>Liggett Gidens wife</i>	<i>5724</i>	<i>395</i>	<i>John Beard</i>	<i>Milleruk</i>	<i>16</i>	<i>34</i>					
<i>Longbrake Jaesb</i>	<i>3956</i>	<i>1000</i>	<i>John White</i>	<i>Milleruk</i>	<i>50</i>	<i>10</i>				<i>40</i>	
<i>Longbrake Lur</i>	<i>3349</i>	<i>1200</i>	<i>James Jenkins</i>	<i>Milleruk</i>	<i>28</i>	<i>37</i>				<i>48</i>	
<i>Lock Lammam</i>	<i>1394</i>	<i>1110</i>	<i>John White</i>	<i>Milleruk</i>	<i>7</i>	<i>2</i>				<i>4</i>	
<i>Lamay Lewis</i>	<i>2996</i>	<i>726</i>	<i>J Jeffers</i>	<i>Milleruk</i>						<i>41 1/4</i>	
	<i>5477</i>	<i>1600</i>	<i>John Cole</i>		<i>18</i>	<i>62</i>					
<i>Lorne Isaac</i>	<i>3349</i>	<i>1200</i>	<i>James Jenkins</i>	<i>Milleruk</i>	<i>16</i>					<i>16 1/2</i>	
<i>Lyster Margret</i>	<i>2997</i>	<i>1140</i>	<i>J Jeffers</i>	<i>Milleruk</i>	<i>12</i>						
					<i>349</i>	<i>227</i>				<i>317 3/4</i>	

Whole No. of Acres.	Value per Acre excluding Buildings.	Total Value of Lands, excluding Buildings.	Value of all Buildings.			Total Value of Lands and Buildings.	Amount Added or Deducted by Co. Board of Equalization.	Total Value as Equalized by Co. Board.	Amount Added or Deducted by State Board of Equalization.	Total Value as Equalized by State Board.	REMARKS.
			Houses.	Mills.	Other Buildings.						
Acres.	H.	Dollars.	Dollars.	Dollars.	Dollars.	Dollars.	Dollars.	Dollars.	Dollars.	Dollars.	
<i>6</i>	<i>50</i>	<i>300</i>		<i>1000</i>	<i>100</i>	<i>1400</i>		<i>1400</i>	<i>168</i>	<i>1232</i>	<i>Belongs to G B Felchner</i>
<i>100</i>	<i>20</i>	<i>2000</i>	<i>150</i>		<i>100</i>	<i>2250</i>		<i>2250</i>	<i>270</i>	<i>1980</i>	<i>Heirs</i>
<i>4</i>	<i>26</i>	<i>104</i>				<i>104</i>		<i>104</i>	<i>12</i>	<i>92</i>	
<i>36</i>	<i>28</i>	<i>1008</i>	<i>200</i>		<i>200</i>	<i>1408</i>		<i>1408</i>	<i>169</i>	<i>1239</i>	
<i>34</i>	<i>22</i>	<i>748</i>				<i>748</i>		<i>748</i>	<i>90</i>	<i>658</i>	
<i>4</i>	<i>28</i>	<i>100</i>	<i>100</i>			<i>200</i>		<i>200</i>	<i>24</i>	<i>176</i>	
<i>98 1/2</i>	<i>28</i>	<i>2618</i>	<i>800</i>			<i>3418</i>		<i>3418</i>	<i>410</i>	<i>3008</i>	
<i>56 3/4</i>	<i>27</i>	<i>1532</i>				<i>1532</i>		<i>1532</i>	<i>184</i>	<i>1348</i>	
<i>21</i>	<i>20</i>	<i>420</i>				<i>420</i>		<i>420</i>	<i>50</i>	<i>370</i>	
<i>100</i>	<i>28</i>	<i>2800</i>	<i>180</i>			<i>2680</i>		<i>2680</i>	<i>398</i>	<i>2332</i>	<i>Heirs</i>
<i>11 3/4</i>	<i>20</i>	<i>235</i>				<i>235</i>		<i>235</i>	<i>28</i>	<i>207</i>	<i>Isidore Liggett 2nd</i>
<i>50</i>	<i>25</i>	<i>1250</i>	<i>100</i>			<i>1350</i>		<i>1350</i>	<i>162</i>	<i>1188</i>	<i>Isidore Liggett 2nd</i>
<i>100</i>	<i>27</i>	<i>2700</i>	<i>200</i>			<i>2900</i>		<i>2900</i>	<i>348</i>	<i>2652</i>	
<i>100</i>	<i>27</i>	<i>2700</i>				<i>2700</i>		<i>2700</i>	<i>324</i>	<i>2376</i>	
<i>13</i>	<i>17</i>	<i>221</i>				<i>221</i>		<i>221</i>	<i>27</i>	<i>194</i>	
<i>41 1/4</i>	<i>28</i>	<i>1081</i>				<i>1081</i>		<i>1081</i>	<i>124</i>	<i>907</i>	
<i>80</i>	<i>27</i>	<i>2160</i>	<i>200</i>		<i>100</i>	<i>2460</i>		<i>2460</i>	<i>295</i>	<i>2165</i>	
<i>32 1/2</i>	<i>18</i>	<i>585</i>				<i>585</i>		<i>585</i>	<i>70</i>	<i>515</i>	
<i>12</i>	<i>23</i>	<i>276</i>				<i>276</i>		<i>276</i>	<i>33</i>	<i>243</i>	
<i>895 3/4</i>		<i>2247</i>	<i>1900</i>	<i>1000</i>	<i>500</i>	<i>2586</i>		<i>2586</i>	<i>310</i>	<i>2292</i>	<i>25 1/2</i> <i>227 1/2</i>

Assessment of Real Property in *Miller* Township,

Union County, Ohio, for the Year 1870.

For Plats of all Lands described on this Page, see Page _____ of Plats.			DESCRIPTION OF PROPERTY.		No. of Acres of Land Classified.					Value of all Buildings.			Total Value of Lands, excluding Buildings.		Amount Added or Deducted by Co. Board of Equalization.			Total Value as Equalized by State Board of Equalization.		Total Value as Equalized by State Board.		REMARKS.	
In Whose Name Assessed.	No. of Entry.	Orig'l Quantity.	ORIGINAL PROPRIETOR.	WATER COURSE.	Arable & Plow Land.	Meadow & Pasture Land.	Uncultiv'd & Wood Land.	Houses.	Mills.	Other Buildings.	Dollars.	Dollars.	Added Dollars.	Deducted Dollars.	Dollars.	Added Dollars.	Deducted Dollars.	Dollars.	Deducted Dollars.				
<i>Myers Christian</i>	<i>2992</i>	<i>1100</i>	<i>W. Creghan</i>	<i>Miller</i>	<i>27</i>	<i>11</i>	<i>22</i>				<i>60</i>	<i>41</i>	<i>26</i>	<i>1560</i>	<i>150</i>			<i>1710</i>		<i>1710</i>	<i>205</i>	<i>1505</i>	<i>60 acres charge to Hannal Trgs</i>
<i>Morrison Guain</i>	<i>2998</i>	<i>1070</i>	<i>John Phillips</i>	<i>Miller</i>	<i>48</i>	<i>20</i>	<i>54</i>				<i>122</i>	<i>17</i>	<i>3294</i>	<i>300</i>				<i>3594</i>		<i>3594</i>	<i>43</i>	<i>3163</i>	
<i>McColly William</i>	<i>3006</i>	<i>1000</i>	<i>P. Talbot</i>	<i>Miller</i>	<i>33</i>	<i>15</i>	<i>7</i>				<i>55</i>	<i>24</i>	<i>1320</i>	<i>300</i>				<i>1620</i>		<i>1620</i>	<i>194</i>	<i>1426</i>	
<i>McIntyre Robert</i>	<i>1394</i>	<i>1100</i>	<i>John White</i>	<i>Miller</i>	<i>32</i>	<i>8</i>	<i>10</i>				<i>50</i>	<i>23</i>	<i>1150</i>					<i>1150</i>		<i>1150</i>	<i>138</i>	<i>1012</i>	
<i>Murrayman Heuser</i>	<i>2997</i>	<i>1140</i>	<i>J. Jeffers</i>	<i>Miller</i>	<i>8</i>	<i>17</i>	<i>9</i>				<i>30</i>	<i>25</i>	<i>750</i>	<i>200</i>				<i>950</i>		<i>950</i>	<i>114</i>	<i>836</i>	
<i>Moss David</i>	<i>3006</i>	<i>1000</i>	<i>P. Talbot</i>	<i>Miller</i>	<i>85</i>	<i>35</i>	<i>26 1/4</i>				<i>96 1/4</i>	<i>26</i>	<i>2502</i>	<i>100</i>	<i>100</i>	<i>2702</i>			<i>2702</i>		<i>324</i>	<i>2379</i>	
<i>McLorell John R</i>	<i>5610</i>	<i>700</i>	<i>J. M. Bailey</i>	<i>Miller</i>			<i>45</i>				<i>45</i>	<i>18</i>	<i>810</i>					<i>810</i>		<i>810</i>	<i>97</i>	<i>713</i>	
<i>McKittrick William</i>	<i>5610</i>	<i>700</i>	<i>J. M. Bailey</i>	<i>Miller</i>	<i>8</i>		<i>3/4</i>				<i>5 3/4</i>	<i>25</i>	<i>143</i>					<i>143</i>		<i>143</i>	<i>17</i>	<i>126</i>	
<i>Miller Jacob</i>	<i>2986</i>	<i>726</i>	<i>J. Jeffers</i>	<i>Miller</i>	<i>25</i>		<i>28</i>				<i>50</i>	<i>26</i>	<i>1300</i>					<i>1300</i>		<i>1300</i>	<i>156</i>	<i>1144</i>	
<i>"</i>	<i>2998</i>	<i>1056</i>	<i>Sad Seldon</i>	<i>"</i>	<i>36</i>		<i>10 1/2</i>				<i>46 1/2</i>	<i>25</i>	<i>1162</i>					<i>1162</i>		<i>1162</i>	<i>135</i>	<i>1023</i>	
<i>"</i>	<i>5609</i>	<i>698</i>	<i>J. M. Bailey</i>	<i>"</i>	<i>40</i>		<i>7</i>				<i>47</i>	<i>26</i>	<i>1222</i>	<i>500</i>	<i>100</i>	<i>1822</i>			<i>1822</i>		<i>219</i>	<i>1603</i>	
<i>Norris Joseph</i>	<i>2997</i>	<i>1140</i>	<i>J. Jeffers</i>	<i>Miller</i>	<i>8</i>		<i>25</i>				<i>33</i>	<i>25</i>	<i>825</i>					<i>825</i>		<i>825</i>	<i>99</i>	<i>726</i>	
<i>Owens Harritt</i>	<i>5477</i>	<i>1600</i>	<i>John Cole</i>	<i>Miller</i>	<i>24</i>	<i>2 3/4</i>					<i>48 3/4</i>	<i>26</i>	<i>1267</i>					<i>1267</i>		<i>1267</i>	<i>152</i>	<i>1115</i>	
<i>Prised John</i>	<i>3006</i>	<i>1000</i>	<i>P. Talbot</i>	<i>Miller</i>	<i>40</i>	<i>176</i>	<i>73 1/2</i>				<i>289 1/2</i>	<i>27</i>	<i>19816</i>	<i>800</i>	<i>500</i>	<i>9116</i>			<i>9116</i>		<i>1094</i>	<i>8022</i>	
<i>"</i>	<i>2997</i>	<i>1140</i>	<i>J. Jeffers</i>	<i>"</i>		<i>50</i>	<i>54</i>				<i>104</i>	<i>26</i>	<i>2704</i>					<i>2704</i>		<i>2704</i>	<i>324</i>	<i>2380</i>	
<i>"</i>	<i>5609</i>	<i>690</i>	<i>J. M. Bailey</i>	<i>"</i>	<i>50</i>	<i>58</i>	<i>110</i>				<i>218</i>	<i>25</i>	<i>5450</i>					<i>5450</i>		<i>5450</i>	<i>654</i>	<i>4796</i>	
<i>Pumpacker Jacob</i>	<i>3006</i>	<i>1000</i>	<i>P. Talbot</i>	<i>Miller</i>	<i>23</i>	<i>13</i>	<i>4</i>				<i>40</i>	<i>22</i>	<i>880</i>					<i>880</i>		<i>880</i>	<i>106</i>	<i>774</i>	<i>Heir's</i>
<i>Pounds Richard</i>	<i>2989</i>	<i>1070</i>	<i>John Phillips</i>	<i>Miller</i>	<i>5</i>	<i>35</i>					<i>40</i>	<i>26</i>	<i>1040</i>					<i>1040</i>		<i>1040</i>	<i>125</i>	<i>915</i>	
<i>"</i>	<i>2995</i>	<i>800</i>	<i>J. Jeffers</i>	<i>"</i>			<i>11</i>				<i>11</i>	<i>26</i>	<i>280</i>					<i>280</i>		<i>280</i>	<i>34</i>	<i>246</i>	
<i>Prier Anne</i>	<i>5477</i>	<i>1600</i>	<i>John Cole</i>	<i>Miller</i>		<i>2 3/4</i>					<i>2 3/4</i>	<i>28</i>	<i>77</i>	<i>100</i>				<i>177</i>		<i>177</i>	<i>22</i>	<i>155</i>	
					<i>439</i>	<i>466</i>	<i>491</i>				<i>1394 1/2</i>		<i>35552</i>	<i>2450</i>	<i>700</i>	<i>38700</i>			<i>38702</i>		<i>4647</i>	<i>34059</i>	

Handwritten calculations and notes at the bottom of the page, including a vertical list of numbers and a small table of values.

Assessment of Real Property in *Milleruk* Township,

Union County, Ohio, for the Year 1870.

For Plats of all Lands described on this Page, see Page _____ of Plats.	DESCRIPTION OF PROPERTY.			No. of Acres of Land Classified.							
				Arable & Plow Land.		Meadow & Pasture Land.		Uncultivated & Wood Land.			
				Acres	H.	Acres	H.	Acres	H.		
IN WHOSE NAME ASSESSED.	No. of Entry.	Orig'l Quantity.	ORIGINAL PROPRIETOR.	WATER COURSE.		Acres	H.	Acres	H.	Acres	H.
<i>Robinson John M</i>	<i>3349</i>	<i>1200</i>	<i>J Jenkins</i>	<i>Milleruk</i>		<i>23</i>	<i>13</i>	<i>28</i>	<i>1/4</i>		
<i>Rowey John M</i>	<i>3349</i>	<i>1200</i>	<i>J Jenkins</i>	<i>Milleruk</i>		<i>45</i>	<i>30</i>	<i>46</i>			
<i>Roush John J</i>	<i>3349</i>	<i>1200</i>	<i>J Jenkins</i>	<i>Milleruk</i>		<i>60</i>	<i>65</i>	<i>44</i>	<i>3/4</i>		
<i>Robt Mary</i>	<i>3349</i>	<i>1200</i>	<i>J Jenkins</i>	<i>Milleruk</i>		<i>24</i>	<i>8</i>	<i>24</i>			
<i>Robinson Asa</i>	<i>2992</i>	<i>1100</i>	<i>W Coughan</i>	<i>Milleruk</i>		<i>70</i>	<i>40</i>	<i>40</i>			
<i>Rodgers Cyrus & William</i>	<i>1394</i>	<i>1100</i>	<i>John White</i>	<i>Milleruk</i>		<i>35</i>		<i>165</i>			
<i>Rauscy William</i>	<i>2995</i>	<i>800</i>	<i>J Jeffers</i>	<i>Milleruk</i>		<i>5</i>	<i>5</i>				
<i>Ritterhouse H W</i>	<i>2995</i>	<i>800</i>	<i>J Jeffers</i>	<i>Milleruk</i>				<i>30</i>			
<i>Richards John</i>	<i>5477</i>	<i>1600</i>	<i>John Cole</i>	<i>Milleruk</i>			<i>10</i>				
<i>Rodgers John C</i>	<i>1394</i>	<i>1100</i>	<i>John White</i>	<i>Milleruk</i>		<i>39</i>	<i>68</i>	<i>72</i>	<i>1/2</i>		
	<i>3850</i>	<i>1000</i>				<i>8</i>					
<i>Robinson James</i>	<i>5210</i>	<i>700</i>	<i>L. M. Bailey</i>	<i>Milleruk</i>				<i>70</i>			
<i>Slack Israel</i>	<i>3349</i>	<i>1200</i>	<i>Jas Jenkins</i>	<i>Milleruk</i>		<i>40</i>	<i>47</i>	<i>30</i>	<i>1/2</i>		
<i>Shotts L. M. & Wm</i>	<i>3349</i>	<i>1200</i>	<i>Jas Jenkins</i>	<i>Milleruk</i>		<i>35</i>	<i>21</i>	<i>14</i>			
<i>Smart John S</i>	<i>2977</i>	<i>1100</i>	<i>W Coughan</i>	<i>Milleruk</i>		<i>20</i>	<i>40</i>	<i>40</i>			
<i>Smart John</i>	<i>2977</i>	<i>1100</i>	<i>W Coughan</i>	<i>Milleruk</i>				<i>5</i>			
<i>Sole Galen</i>	<i>5477</i>	<i>1600</i>	<i>John Cole</i>	<i>Milleruk</i>		<i>12</i>	<i>13</i>	<i>24</i>	<i>1/2</i>		
<i>Shidner John S</i>	<i>3349</i>	<i>1200</i>	<i>Jas Jenkins</i>	<i>Milleruk</i>		<i>20</i>	<i>33</i>	<i>2</i>	<i>3/4</i>		
<i>Stimmel Robert L</i>	<i>2995</i>	<i>1100</i>	<i>J Jeffers</i>	<i>Milleruk</i>		<i>71</i>	<i>40</i>	<i>58</i>			
<i>Said Presley</i>	<i>2992</i>	<i>1100</i>	<i>W Coughan</i>	<i>Milleruk</i>		<i>70</i>	<i>65</i>	<i>67</i>			
<i>Schmitt Wilhelm</i>	<i>2992</i>	<i>1100</i>	<i>W Coughan</i>	<i>Milleruk</i>		<i>79</i>	<i>72</i>	<i>57</i>			
	<i>1573</i>	<i>400</i>	<i>Sole</i>			<i>22</i>	<i>25</i>	<i>62</i>			
<i>Smart Joseph Asa</i>	<i>2996</i>	<i>726</i>	<i>J Jeffers</i>	<i>Milleruk</i>		<i>40</i>	<i>30</i>	<i>50</i>	<i>1/2</i>		
<i>Stimmel Michael</i>	<i>2996</i>	<i>726</i>	<i>J Jeffers</i>	<i>Milleruk</i>		<i>45</i>	<i>35</i>	<i>30</i>	<i>1/4</i>		
						<i>760</i>	<i>660</i>	<i>972</i>	<i>1/2</i>		

Whole No. of Acres.	Value per Acre excluding Buildings.	Total Value of Lands, excluding Buildings.	Value of all Buildings.			Total Value of Lands and Buildings.	Amount Added or Deducted by Co. Board of Equalization.		Total Value as Equalized by Co. Board.	Amount Added or Deducted by State Board of Equalization.		Total Value as Equalized by State Board.	REMARKS.
			Houses.	Mills.	Other Buildings.		Added Dollars.	Deducted Dollars.		Added Dollars.	Deducted Dollars.		
			Dollars.	Dollars.	Dollars.		Dollars.	Dollars.		Dollars.	Dollars.		
<i>64 1/4</i>	<i>25</i>	<i>1606</i>			<i>1606</i>			<i>1606</i>			<i>193</i>	<i>1413</i>	
<i>121</i>	<i>27</i>	<i>3267</i>			<i>3267</i>			<i>3267</i>			<i>392</i>	<i>2875</i>	
<i>169 3/4</i>	<i>27</i>	<i>4583</i>			<i>100</i>	<i>4683</i>		<i>4683</i>			<i>562</i>	<i>4121</i>	
<i>60</i>	<i>25</i>	<i>1500</i>	<i>100</i>		<i>1600</i>			<i>1600</i>			<i>192</i>	<i>1408</i>	
<i>150</i>	<i>24</i>	<i>3600</i>	<i>200</i>		<i>3800</i>			<i>3800</i>			<i>456</i>	<i>3344</i>	<i>W Ritterhouse & Pennels</i>
<i>200</i>	<i>17</i>	<i>3400</i>			<i>3400</i>			<i>3400</i>			<i>408</i>	<i>2992</i>	
<i>10</i>	<i>28</i>	<i>280</i>			<i>280</i>			<i>280</i>			<i>33</i>	<i>247</i>	
<i>30</i>	<i>26</i>	<i>780</i>			<i>780</i>			<i>780</i>			<i>94</i>	<i>686</i>	
<i>10</i>	<i>28</i>	<i>280</i>			<i>280</i>			<i>280</i>			<i>33</i>	<i>247</i>	
<i>179 1/4</i>	<i>27</i>	<i>4839</i>	<i>400</i>	<i>200</i>	<i>5439</i>			<i>5439</i>			<i>653</i>	<i>4786</i>	
<i>3</i>	<i>28</i>	<i>84</i>			<i>84</i>			<i>84</i>			<i>10</i>	<i>74</i>	
<i>70</i>	<i>18</i>	<i>1260</i>			<i>1260</i>			<i>1260</i>			<i>151</i>	<i>1109</i>	
<i>117 1/4</i>	<i>27</i>	<i>3165</i>	<i>800</i>	<i>200</i>	<i>4165</i>			<i>4165</i>			<i>500</i>	<i>3665</i>	
<i>70</i>	<i>22</i>	<i>1540</i>	<i>100</i>	<i>100</i>	<i>1740</i>			<i>1740</i>			<i>209</i>	<i>1531</i>	
<i>100</i>	<i>26</i>	<i>2600</i>	<i>500</i>	<i>100</i>	<i>3200</i>			<i>3200</i>			<i>384</i>	<i>2816</i>	
<i>5</i>	<i>25</i>	<i>125</i>			<i>125</i>			<i>125</i>			<i>15</i>	<i>110</i>	
<i>53 1/2</i>	<i>23</i>	<i>1230</i>			<i>1230</i>			<i>1230</i>			<i>148</i>	<i>1082</i>	
<i>65 3/4</i>	<i>20</i>	<i>1315</i>			<i>1315</i>			<i>1315</i>			<i>158</i>	<i>1157</i>	
<i>164</i>	<i>28</i>	<i>4592</i>	<i>200</i>	<i>100</i>	<i>4892</i>			<i>4892</i>			<i>487</i>	<i>4305</i>	
<i>202</i>	<i>27</i>	<i>5454</i>			<i>5454</i>			<i>5454</i>			<i>654</i>	<i>4800</i>	
<i>208</i>	<i>27</i>	<i>5616</i>	<i>200</i>	<i>200</i>	<i>6016</i>			<i>6016</i>			<i>722</i>	<i>5294</i>	
<i>109</i>	<i>26</i>	<i>2834</i>			<i>2834</i>			<i>2834</i>			<i>340</i>	<i>2494</i>	
<i>120 1/2</i>	<i>26</i>	<i>3133</i>			<i>3133</i>			<i>3133</i>			<i>376</i>	<i>2757</i>	
<i>110 1/2</i>	<i>26</i>	<i>2866</i>	<i>300</i>		<i>3166</i>			<i>3166</i>			<i>380</i>	<i>2786</i>	
<i>23 92 1/4</i>		<i>59949</i>	<i>2500</i>	<i>1000</i>	<i>63749</i>			<i>63749</i>			<i>7650</i>	<i>56099</i>	

Assessment of Real Property in *Miller* Township,

Union County, Ohio, for the Year 1870.

For Plats of all Lands described on this Page, see Page _____ of Plats.			DESCRIPTION OF PROPERTY.						No. of Acres of Land Classified.			Value of all Buildings.			Amount Added or Deducted by Co. Board of Equalization.		Total Value as Equalized by Co. Board.		Amount Added or Deducted by State Board of Equalization.		Total Value as Equalized by State Board.		REMARKS.		
In Whose Name Assessed.	No. of Entry.	Orig'l Quantity.	ORIGINAL PROPRIETOR.	WATER COURSE.	Acres	II.	Acres	II.	Acres	II.	Whole No. of Acres.	Value per Acre including Buildings.	Total Value of Lands, excluding Buildings.	Houses.	Mills.	Other Buildings.	Total Value of Lands and Buildings.	Added Dollars.	Deducted Dollars.	Total Value as Equalized by Co. Board.	Added Dollars.	Deducted Dollars.		Total Value as Equalized by State Board.	
Thompson James	3756	1000	John White	Miller	20		60		68 3/4		148 3/4	28	4165				4165			4165			500	3665	
✓	✓	1307	R. Daudrige	✓	29		20				49	28	1372				1372			1372			165	1207	
✓	✓	5610	J. M. Bailey	✓					100		100	18	1800				1800			1800			216	1584	
Tossey Philmer	2996	726	J. Jeffers	Miller	34		10		6		50	26	1300				1300			1300			156	1144	
Tossey William	5497	1600	John Cole	Miller	70		30		123 3/4		113 3/4	24	2706	100		100	2906			2902			348	2558	
Tossey Aaron	5297	1600	John Cole	Miller			17		17		34	23	782				782			782			94	688	
Tossey Philmer	5297	1600	John Cole	Miller	18		30		30		80	25	2000	150			2150			2150			259	1892	
Thompson W ^r E	5447	1600	John Cole	Miller	40		62		25		120	23	2921	100			3021			3021			362	2659	
✓	✓	1394	John White	✓	24		10		39		23	20	1460				1460			1460			175	1285	
Thompson Lewis B	5447	1600	John Cole	Miller	10		13		1/2		33 1/2	23	540				540			540			65	475	belongs to B. Thompson
✓	✓	1394	John White	✓	6		30		14		32	30	1000				1000			1000			120	880	
Thompson W ^r 2 ^d	2996	726	J. Jeffers	Miller	10		15				25	25	615	100			725			725			87	638	
Thompson W ^r Jr	5447	1600	John Cole	Miller	24		27		9 1/4		60 1/4	22	1325				1325			1325			159	1166	
Thompson Rupert B	3349	1200	James Jenkins	Miller	3	3/4	1				4 3/4	30	942				942			942			17	123	belongs to Philip E. White
✓	✓	5609	J. M. Bailey	✓	8				4		12	23	276				276			276			33	243	Henry man Pennsylvania
Thompson Robert	3296	726	J. M. Bailey	Miller	25		7		38		59 1/4	26	1820				1820			1820			218	1602	10 3/4 included
✓	✓	2996	J. Jeffers	✓							10 3/4														
Wright Solomon	1394	1110	John White	Miller	28		24		48		100	27	2700	100			2800			2800			326	2474	
Wilkins Sigmund	5477	1600	John Cole	Miller	35		30				65	23	1495	100			1595			1595			191	1404	
White Charles W	5477	1600	John Cole	Miller			1/4				1/4	30	7200				207			207			25	142	
Watkins J ^r S	1307	1000	R. Daudrige	Miller	164		146		488		734	23	18354				18354			18354			2500	16134	Michael Beard included
Wells Isaac	2998	1086	Law Seldon	Miller	11		24		23		58	24	1392				1392			1392			167	1225	Heirs
Webb William	5609	690	J. M. Bailey	Miller	24		27		39		80	25	2000				2000			2000			240	1760	
Woodman James	3349	1200	J. Jenkins	Miller	40		75		7 1/4		122 1/4	27	3300	100			3400			3400			408	2992	
Wilkins Oliver	5477	1600	John Cole	Miller	4		1/2				4 1/2	24	108				108			108			14	94	
					627		660		961		2248		53590	950		100	54640			54640			655	48085	

Assessment of Real Property in

Township,

Union County, Ohio, for the Year 1870.

For Plats of all Lands described on this Page, see Page _____ of Plats.	DESCRIPTION OF PROPERTY.				No. of Acres of Land Classified.																																													
	In Whose Name Assessed.	No. of Entry.	Orig'l Quantity.	ORIGINAL PROPRIETOR.	WATER COURSE.	Arable & Plow Land.	Meadow & Pasture Land.	Uncultivated & Wood Land.	Acres.	H.	Acres.	H.	Acres.	H.																																				
District Pub School	1	2992	1000	Wm Broghan	Millcreek																																													
"	2	3006	1000	Peter Talbot	Millcreek																																													
"	3	5477	1600	John Cole	Millcreek																																													
"	4	5477	1600	John Cole	Millcreek																																													
"	5	2989	1086	Samuel Seldon	Millcreek																																													
"	6	3349	1600	John Jenkins	Millcreek																																													
District Pub School	7	1344	1100	John White	Millcreek																																													
<i>Churches</i>																																																		
Pub School Presbyterian	2989	1086	Samuel Seldon	Millcreek																																														
Christian	2992	1100	Wm. Broghan	Millcreek																																														
Christian	5474	1600	John Cole	Millcreek																																														
M.E.	1307	1000	Robert Sandridge	Millcreek																																														
<i>Grave yards</i>																																																		
Providence	2989	1086	Samuel Seldon	Millcreek																																														
Mc. Manly's	3006	1000	Peter Talbot	Millcreek																																														
Watkins	5477	1600	John Cole	Millcreek																																														
<table border="0" style="width: 100%;"> <tr> <td>Page 1st</td> <td>718</td> <td>574</td> <td>1102</td> </tr> <tr> <td>- 2</td> <td>359</td> <td>193</td> <td>370 1/4</td> </tr> <tr> <td>- 3</td> <td>777</td> <td>638</td> <td>817</td> </tr> <tr> <td>- 4</td> <td>455</td> <td>436</td> <td>452</td> </tr> <tr> <td>- 5</td> <td>349</td> <td>229</td> <td>317 3/4</td> </tr> <tr> <td>- 6</td> <td>439</td> <td>464</td> <td>491 1/2</td> </tr> <tr> <td>- 7</td> <td>760</td> <td>660</td> <td>922 1/2</td> </tr> <tr> <td>- 8</td> <td>627</td> <td>660</td> <td>961</td> </tr> <tr> <td></td> <td><u>4484</u></td> <td><u>3854</u></td> <td><u>5308</u></td> </tr> </table>															Page 1 st	718	574	1102	- 2	359	193	370 1/4	- 3	777	638	817	- 4	455	436	452	- 5	349	229	317 3/4	- 6	439	464	491 1/2	- 7	760	660	922 1/2	- 8	627	660	961		<u>4484</u>	<u>3854</u>	<u>5308</u>
Page 1 st	718	574	1102																																															
- 2	359	193	370 1/4																																															
- 3	777	638	817																																															
- 4	455	436	452																																															
- 5	349	229	317 3/4																																															
- 6	439	464	491 1/2																																															
- 7	760	660	922 1/2																																															
- 8	627	660	961																																															
	<u>4484</u>	<u>3854</u>	<u>5308</u>																																															

Whole No. of Acres.	Value per Acre including Buildings.	Total Value of Lands, excluding Buildings.	Value of all Buildings.			Total Value of Lands and Buildings.	Amount Added or Deducted by Co. Board of Equalization.	Total Value as Equalized by Co. Board.	Amount Added or Deducted by State Board of Equalization.	Total Value as Equalized by State Board.	REMARKS.		
			Houses.	Mills.	Other Buildings.								
Acres.	H.	Dollars.	Dollars.	Dollars.	Dollars.	Dollars.	Added Dollars.	Deducted Dollars.	Dollars.	Added Dollars.	Deducted Dollars.	Dollars.	
1/4	40	10	100			110						1.3	
1/4	40	10	500			510						97	
1/4	40	10	100			110						13	
1/2	14	200				214						110	Not shown in Watkins
1/4	40	10	600			610						73	
1/2	40	20	400			420						62	
1/4	40	10	100			110						13	
		54,310.0				3154							
<i>Churches</i>													
1/4	40	10	500			510	1	60705	7295	53420			
1/2	40	20	500			520	2	24594	2951	20643			
1/4	40	10	500			510	3	59493	7139	52354			
1/4	40	10	500			510	4	36832	4419	32413			
1/4	40	10	500			510	5	25551	3106	22445			
1/4	40	10	500			510	6	38702	4644	34058			
1/4	40	10	500			510	7	63749	7650	56099		Not shown in town Plat of Watkins	
1/2	40	20	500			520	8	52640	6134	46506			
		55,820.0				3255							
		364574				43749							
<i>Grave yards</i>													
1/2	40	20				20							
1/2	40	20				20							
1/2	40	20				20							
		60				60							
2394		57555	2250		900	60705							
942 1/4		32444	1550		600	24594							
2232		56793	1850		850	59493							
1347		33382	2600	350	500	36832							
895 3/4		22461	1900	1000	500	25861							
1394 1/2		35552	2450		700	38702							
2392 1/2		59949	2800		1000	63749							
2248		53590	950		100	54640							
13946		341726	16350	1350	5750	364576							
What No. of Acres? 13846 Value that 364,576 Average per acre "26 ³³ Average actual buildings "24 ⁶⁷													

Assessment of Lots in the Town of *Wadsworth*

Union County, Ohio, for the Year 1870.

For Plats of all Lots described on this Page, see Page _____ of Plats.	DESCRIPTION OF PROPERTY.						Value of Lots. Dollars.
	ADDITION.	No. of In-Lot.	No. of Out-Lot.	WHAT PART OF LOT.	No. Feet Front.	No. Feet Depth.	
<i>Bever William</i>		19		<i>W 1/2</i>	32	128	10
<i>Cory Sandus</i>		8		<i>W 1/2</i>	64	160	12
		14		<i>all</i>	32	128	7
<i>Gamble Ruf</i>		17		<i>all</i>	64	112	17
		21			64	128	24
		19		<i>E 1/2</i>			
<i>Gaffin Martha M</i>		7		<i>all</i>	64	144	14
		9			64	112	14
		11		<i>W 1/2</i>	64	112	12
		13		<i>all</i>	32	128	12
		11		<i>part</i>			
<i>Haurawalk Sand</i>		1		<i>all</i>	64	144	14
		3			64	144	24
		5			64	140	14
		11		<i>R</i>			
<i>Haggard John</i>		26		<i>all</i>	64	160	15
<i>LeMay Lena's</i>		24			64	160	15
<i>Owen's Marrett</i>		8		<i>E 1/2</i>			
		14		<i>all</i>	64	160	15
		6			64	160	14
		4			64	160	14
		2			64	160	15
<i>Jessy Arvin</i>		20		<i>all</i>	32	128	15
<i>Thompson James</i>		16			64	128	17
		22			64	160	22
		10			64	128	12
		18			64	128	14
		28			64	160	14
		12			64	128	14
<i>Thompson Russel B</i>		27			64	144	14
		23			64	144	14
		25			64	144	14
		15			64	112	17

Value of all Buildings.			Total Value of Lots and Buildings.	Amount Added or Deducted by Co. Board of Equalization.		Total Value as Equalized by Co. Board.	Amount Added or Deducted by State Board of Equalization.		Total Value as Equalized by State Board.	REMARKS.
Houses.	Mills.	Other Buildings.		Added Dollars.	Deducted Dollars.		Added Dollars.	Deducted Dollars.		
			10			10		1		<i>Geo. Conklin All</i>
70			80			80		10		<i>All</i>
			7			7		1		
			17			17		2		<i>15 belongs to Geo Conklin</i>
			24			24		3		<i>21 " " " "</i>
			84			84		10		<i>Geo Conklin All</i>
70			74			74		9		
60			12			12		1		<i>11 All except 50 ft back & 30 ft front</i>
			12			12		1		<i>All</i>
			14			14		1		
50			74			74		9		
			14			14		2		
			75			75		9		<i>All to M. M. Griffin</i>
60			80			80		10		
										<i>S. H. Covey All</i>
										<i>M. E. Church</i>
			15			15		2		
50	50		115			115		14		
			15			15		2		<i>13 belongs to Geo Thompson</i>
300			317			317		38		
			22			22		3		
			12			12		1		<i>11 belongs to Saml Covey</i>
38			52			52		6		
86			100			100		12		<i>98 belongs to Geo Westlake</i>
38			52			52		6		<i>" " Mary Shields</i>
			14			14		2		<i>" " Geo Thompson</i>
										<i>School house</i>
38			52			52		6		
100			117			117		14		<i>" " Geo Conklin</i>
			1460			1460		175		

387

1025

101460

1460

175-1285

**MILL CREEK TP.
UNION COUNTY
1870**