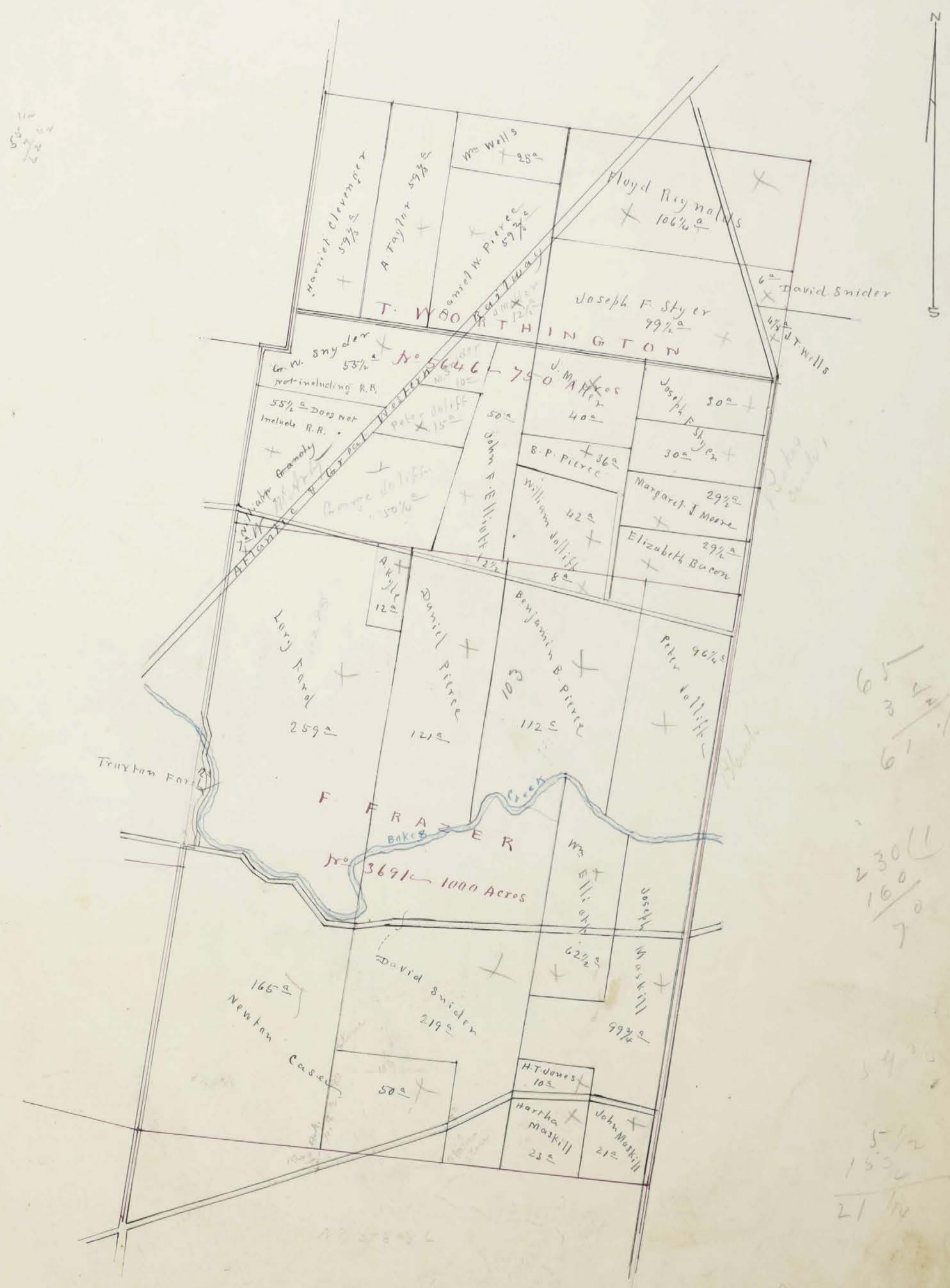
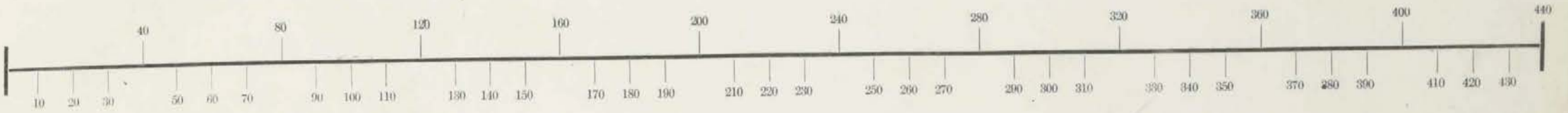


**TAYLOR TP.
UNION COUNTY
1870**

Section, No.

Lot Surveys No 5646 and 5691

Scale, ⁸⁰40 Rods to an Inch, or ²⁰10 Rods to 1-4 Inch.



1/4
5 3/4
2

65
3 1/4
61 1/4

230
160
70

54 3/4

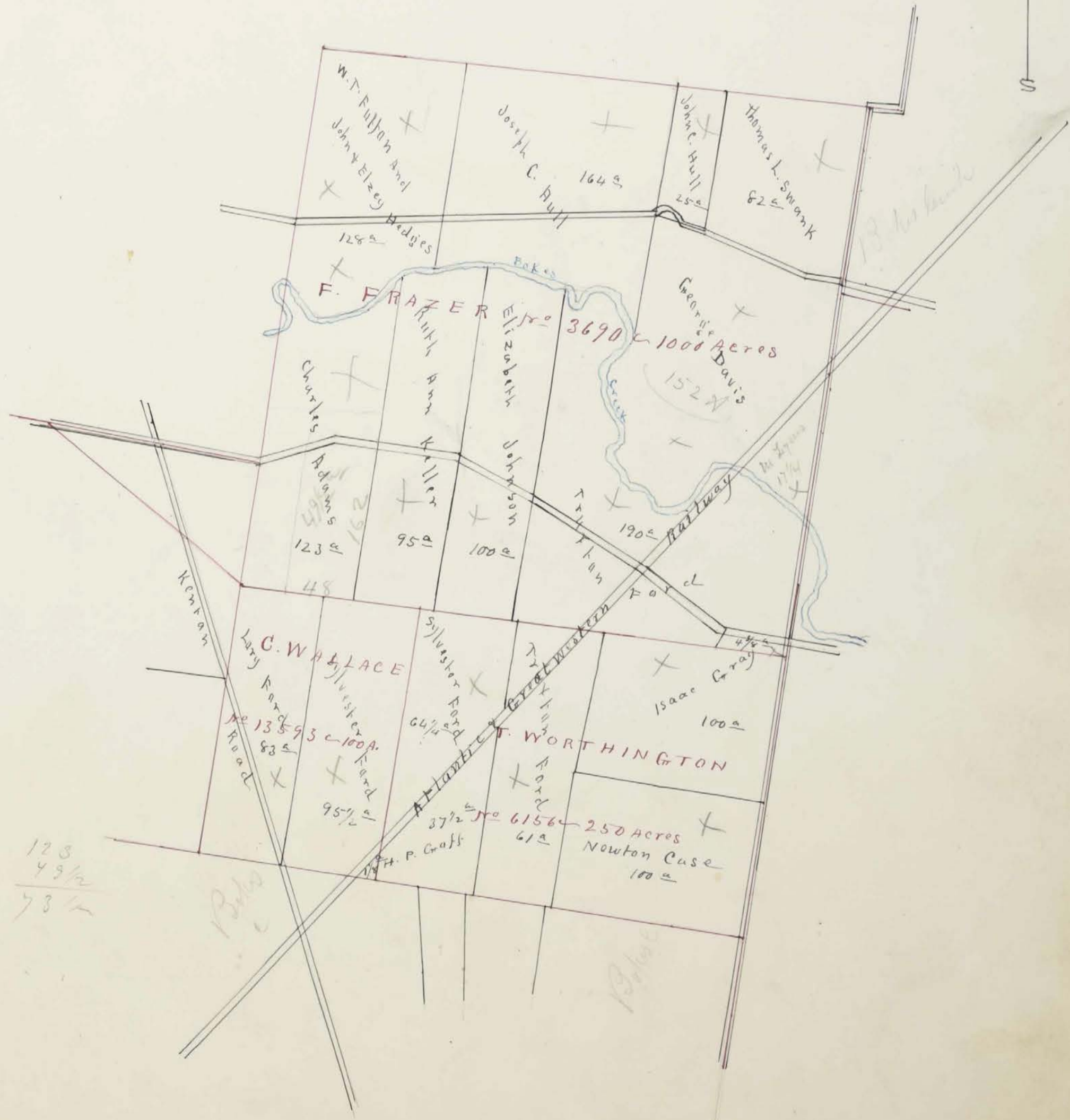
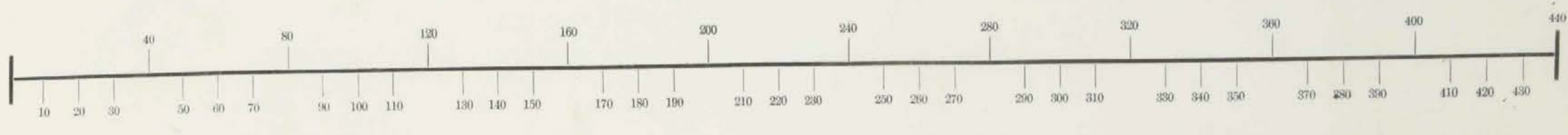
5 1/2
153
21 1/2

219
214

177 3/4

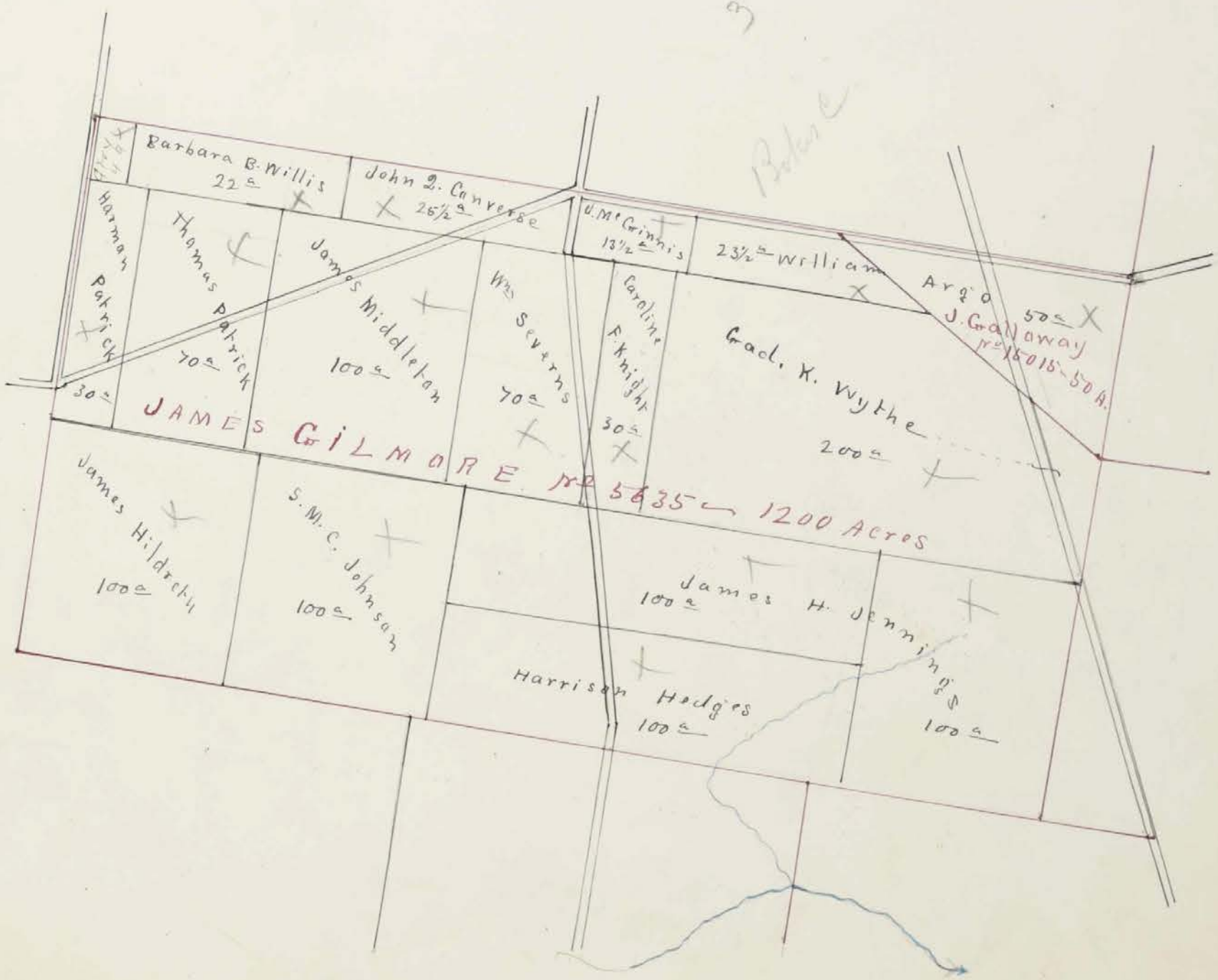
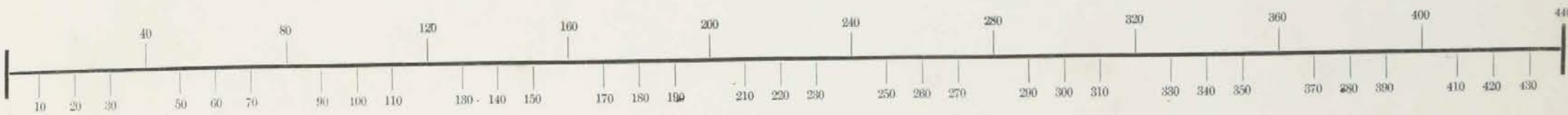
Survey
Section, No. 3690 And Lot 13593 And 6156

Scale, ⁸⁰40 Rods to an Inch, or ²⁰10 Rods to 1-4 Inch.



Survey Section, No. 5635 Lot And 15015

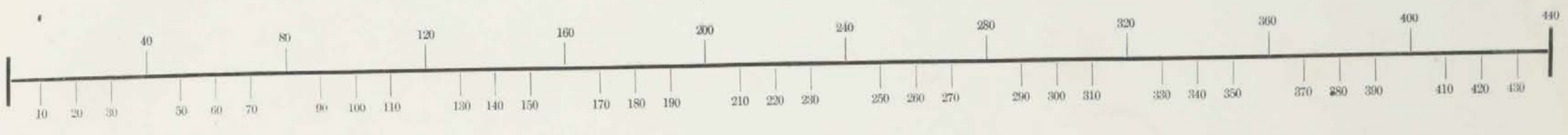
Scale, 40 Rods to an Inch, or 10 Rods to 1-4 Inch.



Handwritten calculations and notes at the bottom right of the page, including the number 43, a vertical line, and the number 55.

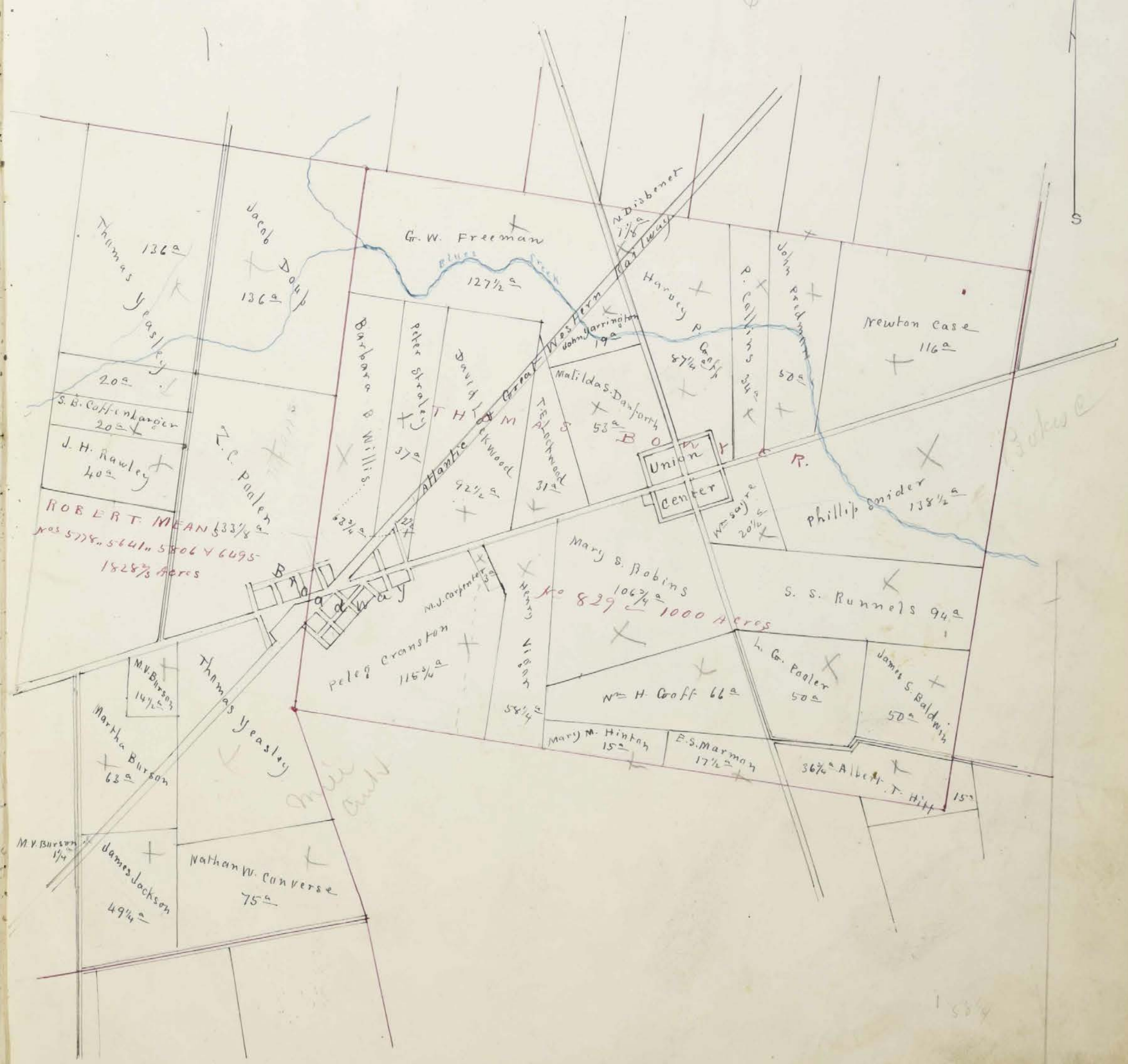
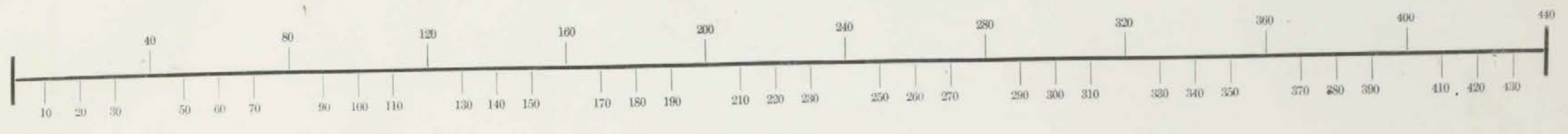
Survey
Section, No. 5386 Lot

Scale, ⁸⁰40 Rods to an Inch, or ²⁰10 Rods to 1-4 Inch.



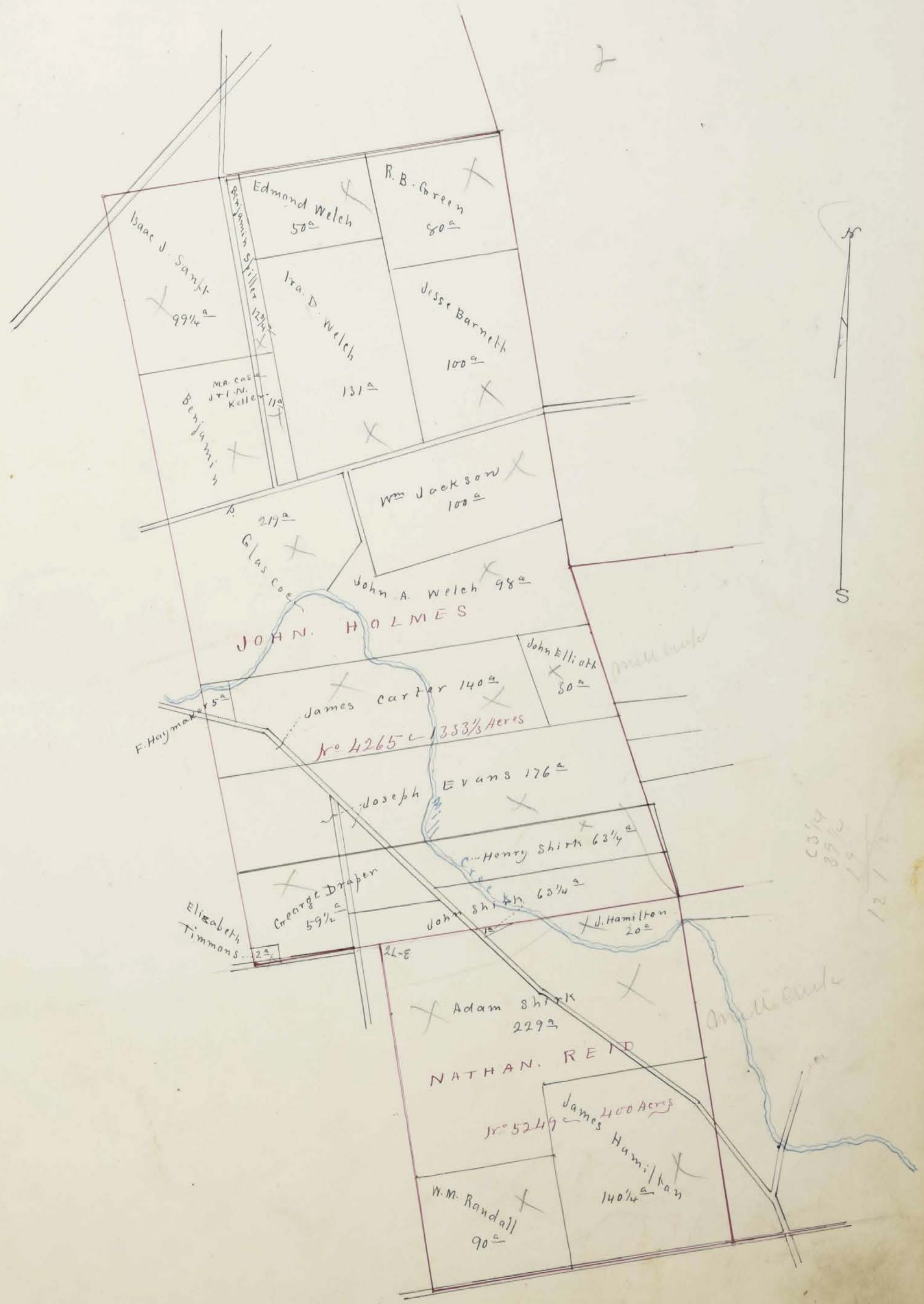
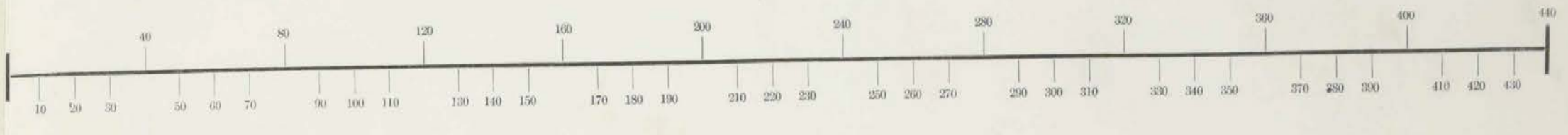
Survey Section, No. 829 And Lot 5778 &c

Scale, 40 Rods to an Inch, or 10 Rods to 1-4 Inch.



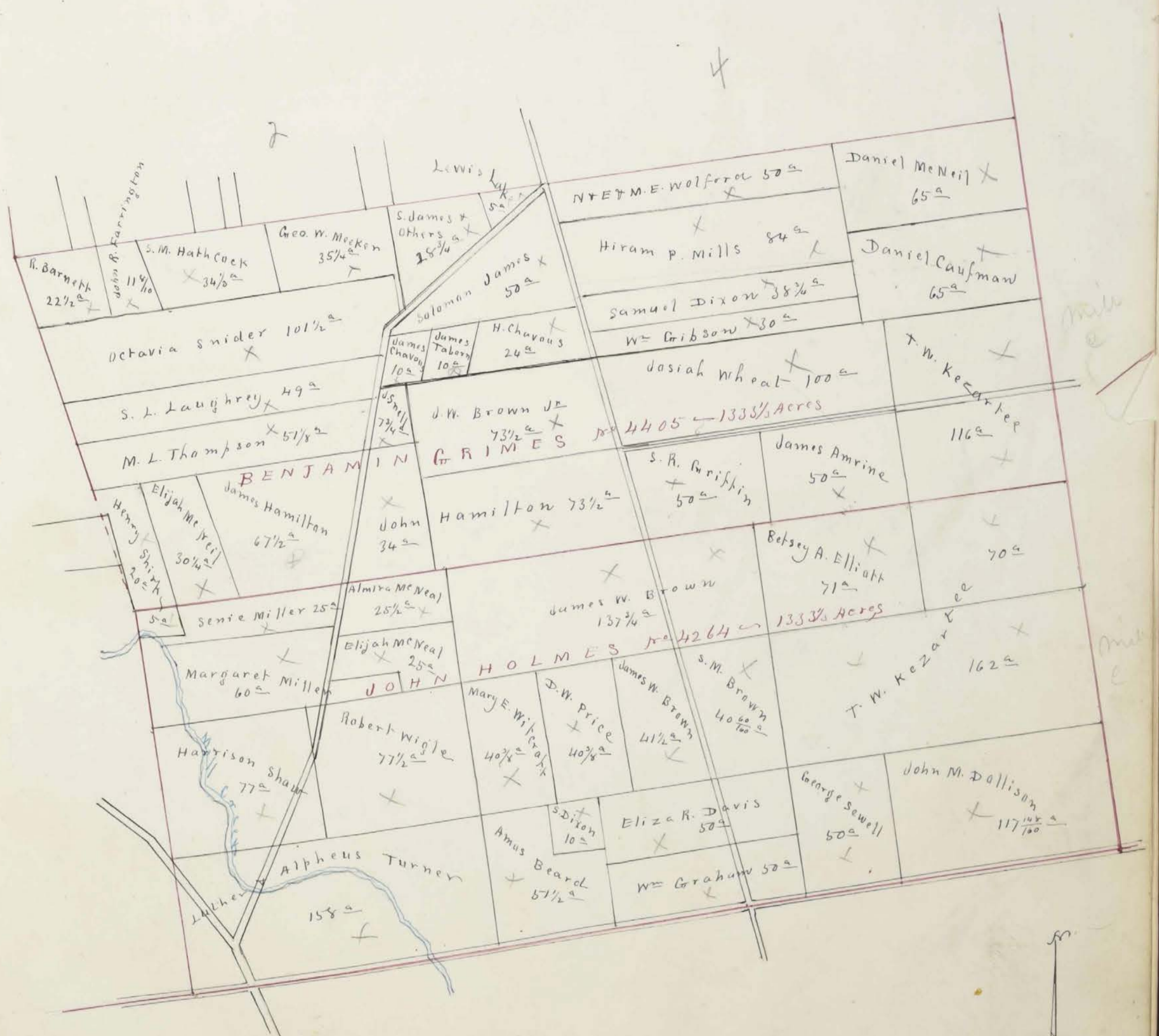
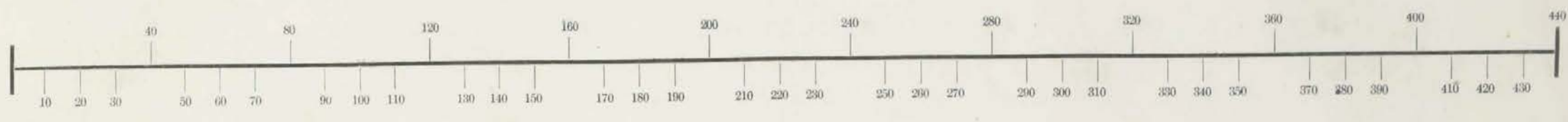
Survey Section, No. 4265 Lot and 5249

Scale, 40 Rods to an Inch, or 20 Rods to 1-4 Inch.



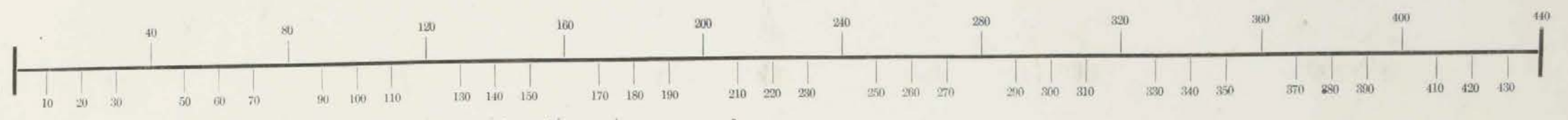
Survey Section, No. 21405 Lot Amd 4264

Scale, ⁵⁰40 Rods to an Inch, or ²⁰10 Rods to 1-4 Inch.

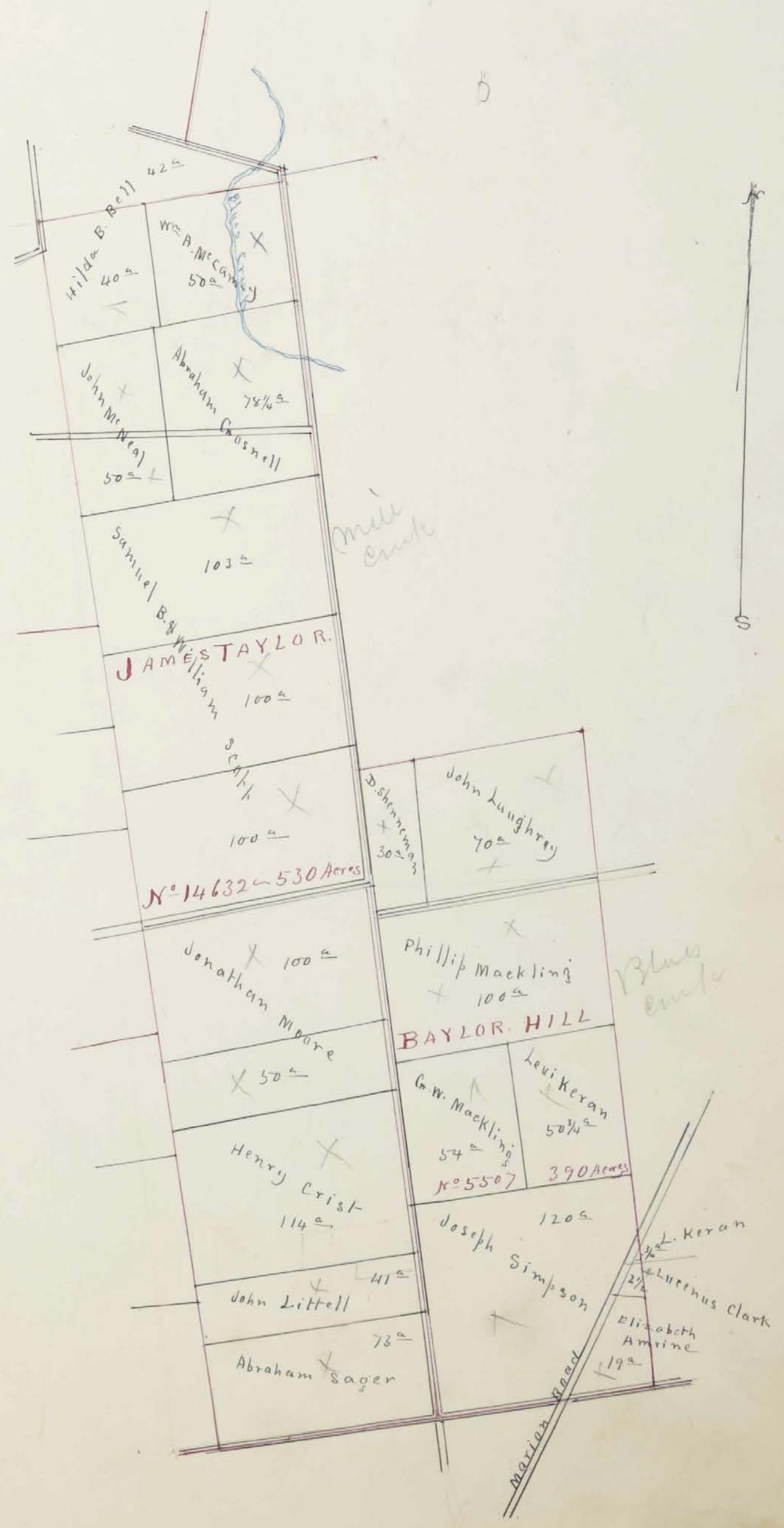


Survey Section, No. 14632 And Lot 5507

Scale, ⁸⁰40 Rods to an Inch, or ²⁰10 Rods to 1-4 Inch.

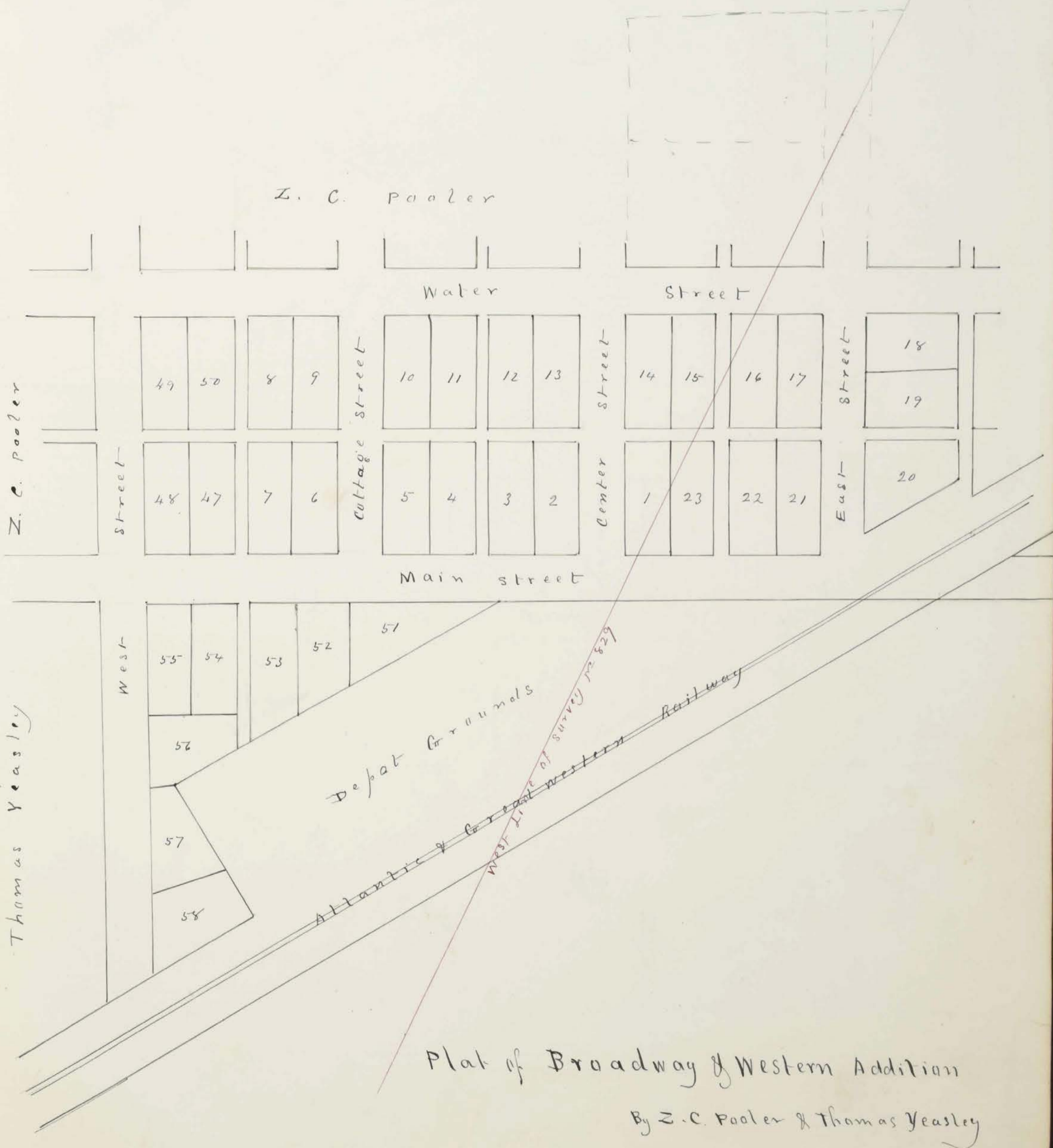
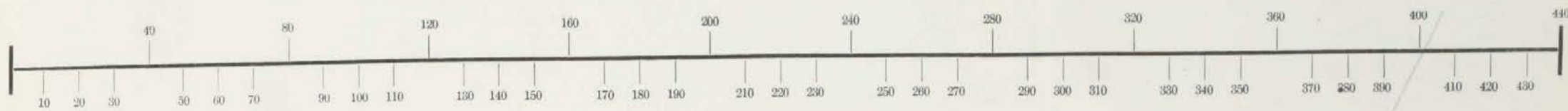


Double the above scale



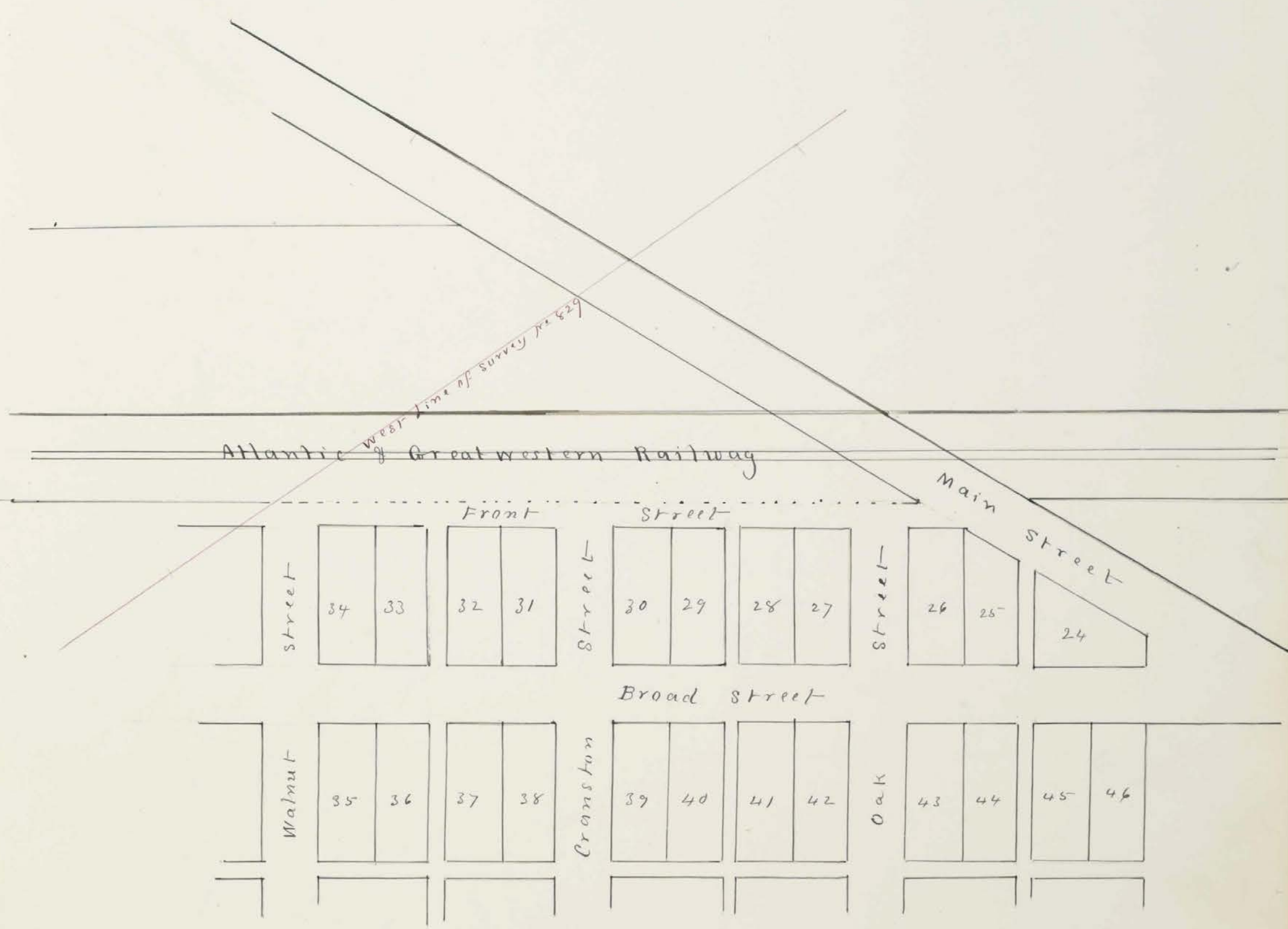
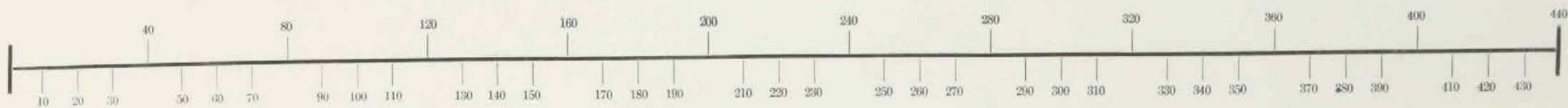
Section, No. _____ Lot _____

Scale, 40 Rods to an Inch, or 10 Rods to 1-4 Inch.



Section, No. _____ Lot _____

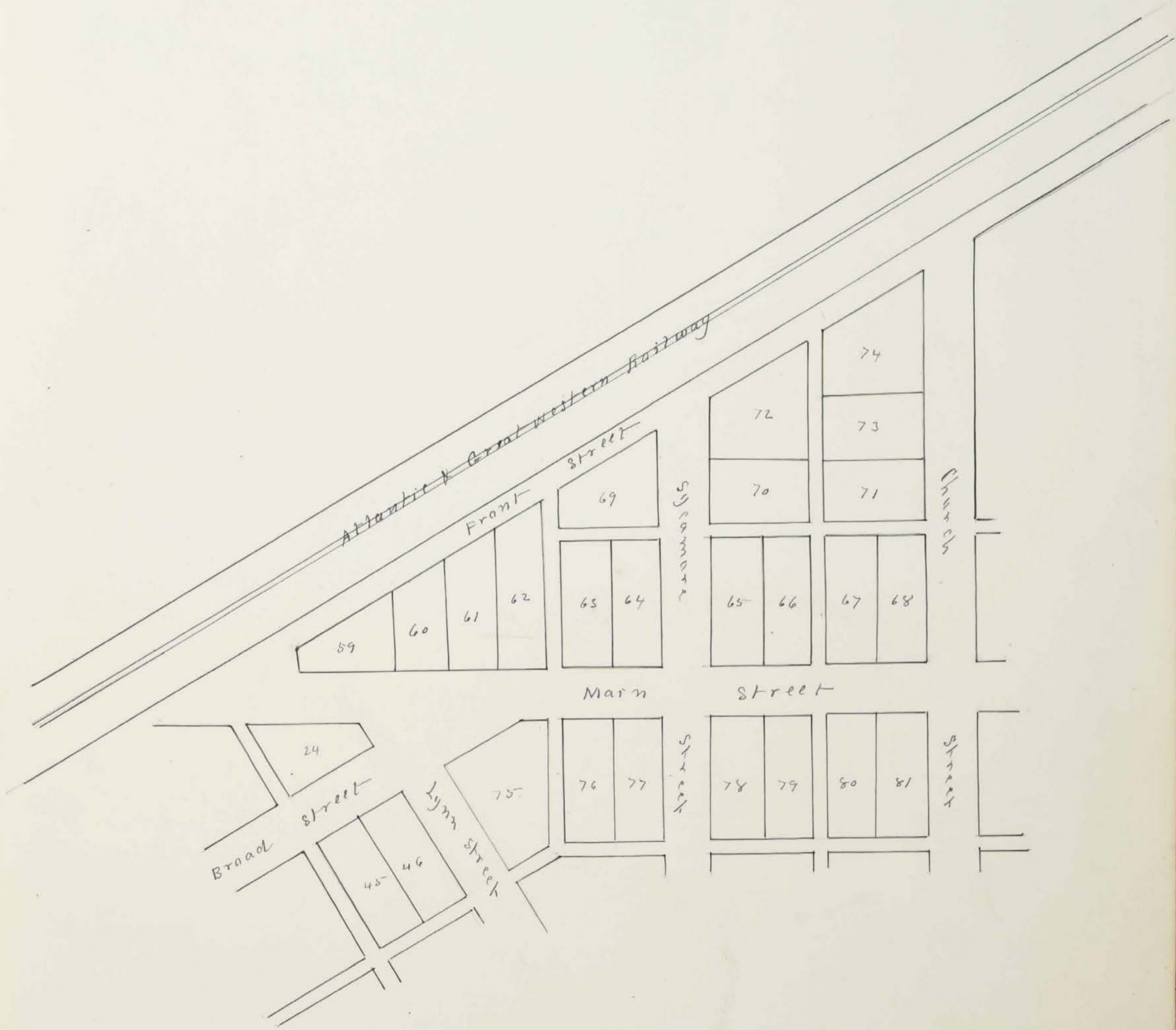
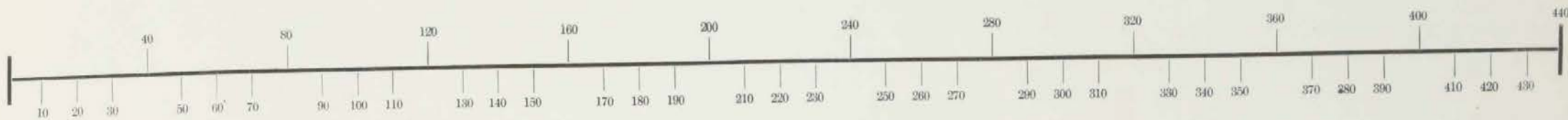
Scale, 40 Rods to an Inch, or 10 Rods to 1-4 Inch.



Plat of Cranstons Addition to Broadway

Section, No. _____ Lot _____

Scale, 40 Rods to an Inch, or 10 Rods to 1-4 Inch.

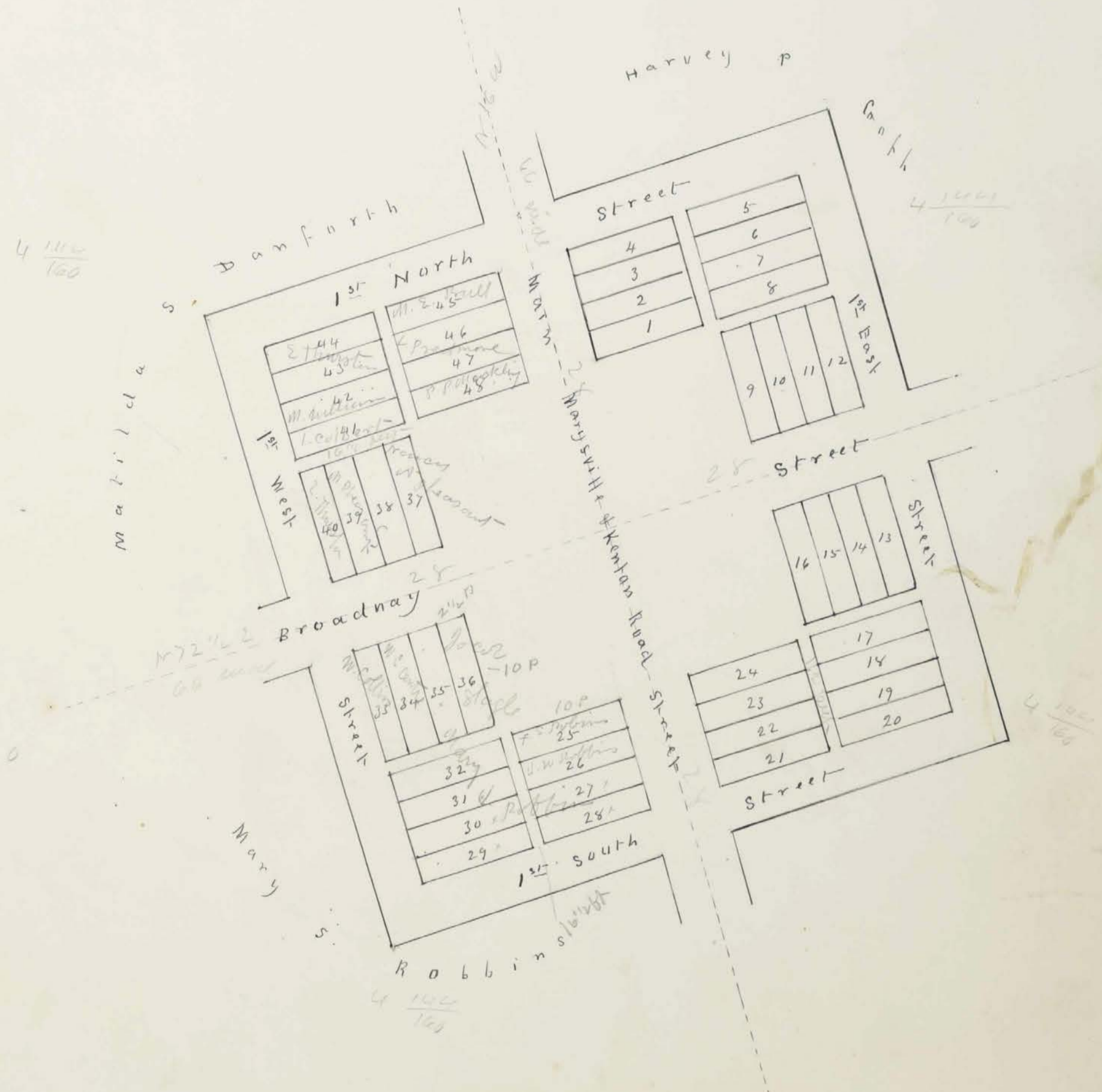
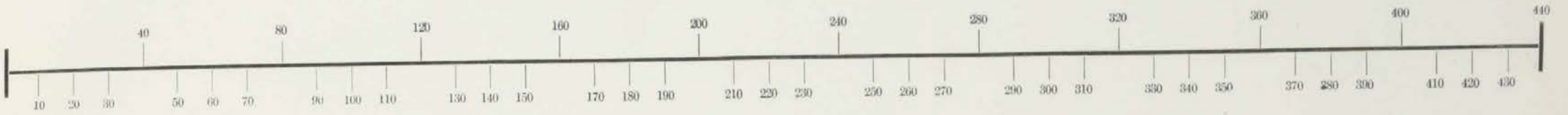


Plat of Eastern Addition to Broadway

By Peleg Cranston & Samuel Straley

Section, No. _____ Lot _____

Scale, 40 Rods to an Inch, or 10 Rods to 1-4 Inch.



Plat of Union Center

Created by Court of common pleas
Union County 1869

Assessment of Real Property in *Taylor* Township,

Union County, Ohio, for the Year 1870.

IN WHOSE NAME ASSESSED.	No. of Entry.	Orig'l Quantity.	DESCRIPTION OF PROPERTY.	WATER COURSE.	No. of Acres of Land Classified.			
					Arable & Plow Land.	Meadow & Pasture Land.	Uncultivated & Wood Land.	
<i>Adams Charles</i>	3690	1000	<i>A. Draeger</i>	<i>Bokeseenk</i>				123 1/2
<i>American Elizabeth</i>	5507	390	<i>B. Hill</i>	<i>Bluseenk</i>	5	14		
<i>American James</i>	4405	1333	<i>Benj. Grimes</i>	<i>Milleruck</i>	11	8		35
<i>Argo William</i>	15015	50	<i>Jo. Galloway</i>	<i>Bokeseenk</i>		11		40
	5235	1200	<i>Jo. Galloway</i>	<i>Bluseenk</i>				24 1/2
<i>Barnett Jessie</i>	4265	1333 1/2	<i>John Holmes</i>	<i>Milleruck</i>	10	90		
	5229	1806	<i>R. Means</i>	" "	20	30		61 1/2
<i>Barnett Samuel</i>	5229	1806	<i>R. Means</i>	<i>Milleruck</i>		5		10
	6493							
<i>Barnett Reuben Sen. J.</i>	5229	1806	<i>R. Means</i>	<i>Milleruck</i>	25	25		
	6493							
<i>Baldwin James B.</i>	829	1000	<i>Thos. Bowyer</i>	<i>Bluseenk</i>	11	24		15
<i>Beard Amos</i>	4264	1333	<i>John Holmes</i>	<i>Milleruck</i>	35	5		11 1/2
<i>Brown James W.</i>	4264	1333	<i>John Holmes</i>	<i>Milleruck</i>	45	40		97 1/2
<i>Burson Martha</i>	5229	1828	<i>R. Means</i>	<i>Milleruck</i>	10	40		13
	6493							
<i>Burson Maurice V.</i>	5229	1828	<i>R. Means</i>	<i>Milleruck</i>	10			5 1/2
	6493							
<i>Brown Stephen W.</i>	4264	1333	<i>John Holmes</i>	<i>Milleruck</i>	7	8		25 1/2
<i>Bacon Elizabeth</i>	5646	750	<i>Thos. Northway</i>	<i>Bokeseenk</i>	8	12		9 1/2
<i>Brown J. W. Jr.</i>	4405	1333	<i>B. Grimes</i>	<i>Milleruck</i>		10		63 1/2
<i>Barnett Reuben</i>	4405	1333	<i>B. Grimes</i>	<i>Milleruck</i>	7	4		11 1/2
<i>Bell Hilda B.</i>	6493	1333	<i>R. Means</i>	<i>Milleruck</i>	12	15		15
	5229	530	<i>Jo. Taylor</i>	<i>Bluseenk</i>	13	22		17
	14632							

Whole No. of Acres.	Value per Acre, excluding Buildings.	Total Value of Lands, excluding Buildings.	Value of all Buildings.			Total Value of Lands and Buildings.	Amount Added or Deducted by Co. Board of Equalization.		Total Value as Equalized by Co. Board.	Amount Added or Deducted by State Board of Equalization.		Total Value as Equalized by State Board.	REMARKS.
			Houses.	Mills.	Other Buildings.		Added Dollars.	Deducted Dollars.		Added Dollars.	Deducted Dollars.		
123 1/2	15	1853 1/2				1853 1/2		1853	222		1631		
19	22	418				418		418	50		368		
50	16	800				800		800	96		704		
50	16	800				800		800	96		704		
33 1/2	15	503 1/2				503 1/2		353	43		310		
100	22	2200	200			2400		2400	288		2112		
116 1/2	22	2563				2563		2563	307		2256		
15	20	300				300		300	36		264		
50	20	1000	125			1125		1125	135		990		
50	18	900	250			1150		1150	138		1012		
51 1/2	22	1133				1133		1133	136		997		
119 1/2	20	2395	400		150	4135		4135	496		3639		
63	22	1386	200		70	1656		1656	199		1457		
15 3/4	22	347 1/2				347 1/2		347	42		305		
40 3/4	18	734 1/2				734 1/2		734	88		646		
29 1/2	20	590				590		590	71		519		
73 1/2	16	1176				1176		1176	141		1035		
22 1/2	16	360				360		360	43		317		
42	20	840	160			1000		1000	120		880		
53	20	1060			100	1160		1140	138		1002		
116 1/2		22378	1335		320	24133		24033	2853		21180		

Assessment of Real Property in *Jaylar* Township,

Union County, Ohio, for the Year 1870.

For Plats of all Lands described on this Page, see Page _____ of Plats.	DESCRIPTION OF PROPERTY.				No. of Acres of Land Classified.				Whole No. of Acres.	Value per Acre excluding Buildings.	Total Value of Lands, excluding Buildings.	Value of all Buildings.			Total Value of Lands and Buildings.	Amount Added or Deducted by Co. Board of Equalization.		Total Value as Equalized by Co. Board.	Amount Added or Deducted by State Board of Equalization.		Total Value as Equalized by State Board.	REMARKS.						
	IN WHOSE NAME ASSESSED.	No. of Entry.	Orig'l Quantity.	ORIGINAL PROPRIETOR.	WATER COURSE.	Arable & Plow Land.		Meadow & Pasture Land.				Uncultivated & Wood Land.	Houses.	Mills.		Other Buildings.	Dollars.		Dollars.	Dollars.			Dollars.	Dollars.	Dollars.	Dollars.	Dollars.	
						Acres.	H.	Acres.																				H.
<i>Converse Nathan W</i>	<i>5241, 5206</i>	<i>1528 2/3</i>	<i>R Means</i>	<i>Millerick</i>	<i>15</i>	<i>25</i>	<i>25</i>			<i>75</i>	<i>20</i>		<i>1500</i>				<i>1500</i>		<i>150</i>	<i>1320</i>								
<i>Coffinbauer Sam B</i>	<i>5229</i>	<i>1506</i>	<i>R Means</i>	<i>Millerick</i>	<i>10</i>					<i>20</i>	<i>18</i>		<i>360</i>				<i>360</i>		<i>43</i>	<i>317</i>								
<i>Converse Orin P</i>	<i>5229</i>	<i>1506</i>	<i>R Means</i>	<i>Millerick</i>	<i>15</i>	<i>25</i>	<i>33 1/2</i>			<i>83 1/2</i>	<i>20</i>	<i>100</i>	<i>1665</i>	<i>100</i>	<i>50</i>		<i>1815</i>		<i>218</i>	<i>1697</i>								
<i>Conanston Pely</i>	<i>829</i>	<i>1000</i>	<i>Thos Boyer</i>	<i>Blusewick</i>	<i>4</i>	<i>40</i>	<i>63 1/2</i>			<i>115 3/4</i>	<i>22</i>		<i>2778</i>				<i>2778</i>		<i>333</i>	<i>2445</i>								
<i>Collins Price</i>	<i>829</i>	<i>1000</i>	<i>Thos Boyer</i>	<i>Blusewick</i>	<i>15</i>	<i>10</i>	<i>9</i>			<i>34</i>	<i>20</i>	<i>100</i>	<i>680</i>	<i>100</i>			<i>780</i>		<i>94</i>	<i>686</i>								
<i>Cass Newton</i>	<i>829</i>	<i>1000</i>	<i>Thos Boyer</i>	<i>Blusewick</i>	<i>24</i>	<i>21</i>	<i>71</i>			<i>116</i>	<i>18</i>		<i>2088</i>				<i>2088</i>		<i>230</i>	<i>1838</i>								
<i>"</i>	<i>3691</i>	<i>"</i>	<i>J. Drafis</i>	<i>Bobserick</i>	<i>52</i>	<i>73</i>	<i>90</i>			<i>215</i>	<i>22</i>	<i>150</i>	<i>4730</i>	<i>150</i>	<i>250</i>		<i>5180</i>		<i>616</i>	<i>4514</i>								
<i>"</i>	<i>6156</i>	<i>250</i>	<i>J. Worthington</i>	<i>"</i>	<i>6</i>	<i>20</i>	<i>74</i>			<i>100</i>	<i>18</i>		<i>1800</i>				<i>1800</i>		<i>216</i>	<i>1584</i>								
<i>Cass Newton</i>	<i>829</i>	<i>1000</i>	<i>Thos Boyer</i>	<i>Blusewick</i>	<i>3</i>					<i>3</i>	<i>30</i>	<i>300</i>	<i>90</i>				<i>390</i>		<i>47</i>	<i>343</i>								
<i>Cass Mary Ann</i>	<i>4265</i>	<i>1333</i>	<i>John Holmes</i>	<i>Millerick</i>	<i>3</i>	<i>8</i>				<i>11</i>	<i>20</i>		<i>220</i>				<i>220</i>		<i>26</i>	<i>194</i>								
<i>Carter James</i>	<i>4265</i>	<i>1333</i>	<i>John Holmes</i>	<i>Millerick</i>	<i>40</i>	<i>50</i>	<i>40</i>			<i>140</i>	<i>22</i>		<i>3080</i>				<i>3080</i>		<i>370</i>	<i>2710</i>								
<i>Chavous Howard</i>	<i>4405</i>	<i>1333</i>	<i>B. Grims</i>	<i>Millerick</i>	<i>10</i>		<i>14</i>			<i>24</i>	<i>18</i>		<i>432</i>				<i>432</i>		<i>52</i>	<i>380</i>								
<i>Chavous James</i>	<i>"</i>	<i>"</i>	<i>"</i>	<i>"</i>	<i>5</i>		<i>5</i>			<i>10</i>	<i>18</i>		<i>180</i>				<i>180</i>		<i>22</i>	<i>158</i>								
<i>Caufman David</i>	<i>4405</i>	<i>1333</i>	<i>B. Grims</i>	<i>Millerick</i>	<i>12</i>		<i>53</i>			<i>65</i>	<i>14</i>		<i>910</i>				<i>910</i>		<i>109</i>	<i>801</i>								
<i>Clark Lucus</i>	<i>5507</i>	<i>390</i>	<i>Baylor Hill</i>	<i>Blusewick</i>		<i>2 1/2</i>				<i>2 1/2</i>	<i>22</i>		<i>55</i>				<i>55</i>		<i>6</i>	<i>49</i>								
<i>Clvinger Hamitt</i>	<i>5646</i>	<i>750</i>	<i>J. Worthington</i>	<i>Bobserick</i>	<i>10</i>		<i>41 1/2</i>			<i>59 1/2</i>	<i>16</i>		<i>944</i>				<i>944</i>		<i>113</i>	<i>831</i>								
<i>Crist Henry</i>	<i>14632</i>	<i>550</i>	<i>Ja. Taylor</i>	<i>Blusewick</i>	<i>21</i>	<i>50</i>	<i>43</i>			<i>114</i>	<i>20</i>	<i>200</i>	<i>2280</i>	<i>200</i>	<i>150</i>		<i>2680</i>		<i>316</i>	<i>2314</i>								
<i>Converse John P</i>	<i>5235</i>	<i>1200</i>	<i>Ja Gilman</i>	<i>Blusewick</i>	<i>10</i>	<i>10</i>	<i>5 1/2</i>			<i>25 1/2</i>	<i>20</i>		<i>510</i>				<i>510</i>		<i>61</i>	<i>449</i>								
<i>Carpenter Martha J</i>	<i>829</i>	<i>1506</i>	<i>R Means</i>	<i>Blusewick</i>																	<i>All to Newton Case Dec 27/69</i>							
					<i>260</i>	<i>354 1/2</i>	<i>599</i>			<i>1213 1/2</i>	<i>1213 1/2</i>		<i>24302.960</i>	<i>450</i>	<i>25602</i>		<i>25602</i>		<i>3072</i>	<i>22530</i>								

Assessment of Real Property in *Laylor* Township,

Union County, Ohio, for the Year 1870.

For Plats of all Lands described on this Page, see Page _____ of Plats.			DESCRIPTION OF PROPERTY.		No. of Acres of Land Classified.				Whole No. of Acres.	Value per Acre, including Buildings.	Total Value of Lands, excluding Buildings.	Value of all Buildings.			Total Value of Lands and Buildings.	Amount Added or Deducted by Co. Board of Equalization.		Total Value as Equalized by Co. Board.	Amount Added or Deducted by State Board of Equalization.		Total Value as Equalized by State Board.	REMARKS.
In Whose Name Assessed.	No. of Entry.	Orig'l Quantity.	ORIGINAL PROPRIETOR.	WATER COURSE.	Arable & Plow Land.	Meadow & Pasture Land.	Uncultiv'd & Wood Land.	Houses.				Mills.	Other Buildings.	Added Dollars.		Deducted Dollars.	Added Dollars.		Deducted Dollars.			
<i>Galloway James</i>	<i>5-386</i>	<i>990</i>	<i>R. Meaus</i>	<i>Bluescreek</i>	<i>100</i>	<i>250</i>	<i>723</i>	<i>1013</i>	<i>10</i>	<i>17168</i>			<i>17168</i>		<i>17168</i>		<i>2060</i>	<i>15108</i>				
<i>Green Robert B</i>	<i>4265</i>	<i>1333</i>	<i>John Holmes</i>	<i>Millets</i>	<i>28</i>	<i>19</i>	<i>34</i>	<i>80</i>	<i>18</i>	<i>1440</i>			<i>1440</i>		<i>1440</i>		<i>173</i>	<i>1267</i>				
<i>Glases Bruf</i>	<i>4265</i>	<i>1333</i>	<i>John Holmes</i>	<i>Millets</i>	<i>20</i>	<i>20</i>	<i>59</i>	<i>219</i>	<i>22</i>	<i>4818</i>			<i>4818</i>		<i>4818</i>		<i>578</i>	<i>4240</i>				
<i>Graham William</i>	<i>4264</i>	<i>1333</i>	<i>John Holmes</i>	<i>Millets</i>	<i>20</i>	<i>20</i>	<i>10</i>	<i>50</i>	<i>22</i>	<i>1100</i>	<i>300</i>		<i>1400</i>		<i>1400</i>		<i>168</i>	<i>1232</i>				
<i>Griffin Samuel B</i>	<i>4405</i>	<i>1333</i>	<i>B. Grimes</i>	<i>Millets</i>	<i>18</i>	<i>9</i>	<i>24</i>	<i>50</i>	<i>20</i>	<i>1100</i>			<i>1100</i>		<i>1000</i>		<i>120</i>	<i>880</i>				
<i>Gibson William</i>	<i>4405</i>	<i>1333</i>	<i>B. Grimes</i>	<i>Millets</i>	<i>5</i>	<i>5</i>	<i>20</i>	<i>30</i>	<i>18</i>	<i>540</i>			<i>540</i>		<i>540</i>		<i>65</i>	<i>475</i>				
<i>Jornell Abraham</i>	<i>14633</i>	<i>530</i>	<i>J. Laylor</i>	<i>Bluescreek</i>	<i>15</i>	<i>50</i>	<i>134</i>	<i>78 1/4</i>	<i>20</i>	<i>1565</i>	<i>400</i>		<i>1965</i>		<i>1965</i>		<i>236</i>	<i>1729</i>				
<i>Gray Isaac</i>	<i>3690</i>	<i>1000</i>	<i>J. Draper</i>	<i>Bluescreek</i>		<i>1</i>	<i>1</i>	<i>4 1/2</i>	<i>22</i>	<i>99</i>		<i>156</i>	<i>249</i>		<i>249</i>		<i>30</i>	<i>219</i>	<i>All to Henry, C. Ford March 27, 1870</i>			
	<i>2256</i>	<i>250</i>	<i>J. Worthington</i>		<i>22</i>	<i>16</i>	<i>62</i>	<i>100</i>	<i>20</i>	<i>2000</i>			<i>2000</i>		<i>2000</i>		<i>240</i>	<i>1760</i>				
<i>Goff Harvey P</i>	<i>6156</i>	<i>250</i>	<i>J. Worthington</i>	<i>Bluescreek</i>		<i>10</i>	<i>276</i>	<i>32 1/2</i>	<i>18</i>	<i>675</i>			<i>675</i>		<i>675</i>		<i>81</i>	<i>594</i>				
	<i>829</i>	<i>1000</i>	<i>M. Bowyer</i>	<i>Bluescreek</i>	<i>17</i>	<i>52</i>	<i>194</i>	<i>87 1/4</i>	<i>22</i>	<i>1920</i>	<i>300</i>	<i>150</i>	<i>2370</i>		<i>2370</i>		<i>284</i>	<i>2086</i>				
<i>Goff W. H.</i>	<i>829</i>	<i>100</i>	<i>M. Bowyer</i>	<i>Bluescreek</i>	<i>10</i>	<i>20</i>	<i>29</i>	<i>69</i>	<i>20</i>	<i>1380</i>			<i>1380</i>		<i>1380</i>		<i>166</i>	<i>1214</i>				
<i>Gandy William</i>	<i>3691</i>	<i>1000</i>	<i>J. Draper</i>	<i>Bluescreek</i>																		
	<i>5646</i>	<i>750</i>	<i>J. Worthington</i>																			
<i>Goff H. P.</i>	<i>13593</i>	<i>1000</i>	<i>Wallace</i>	<i>Bluescreek</i>		<i>1</i>	<i>3</i>	<i>1 3/4</i>	<i>24</i>	<i>42</i>			<i>42</i>		<i>42</i>		<i>5</i>	<i>37</i>				
					<i>315</i>	<i>534</i>	<i>1031 1/4</i>			<i>1679 1/2</i>			<i>1550 1/4</i>	<i>3374 1/4</i>	<i>1000</i>	<i>300</i>	<i>3507 1/4</i>	<i>3507 1/4</i>	<i>4206</i>	<i>30941</i>		

Assessment of Real Property in *Taylor* Township,

Union County, Ohio, for the Year 1870.

For Plats of all Lands described on this Page, see Page _____ of Plats.	DESCRIPTION OF PROPERTY.				No. of Acres of Land Classified.						
	IN WHOSE NAME ASSESSED.	No. of Entry.	Orig'l Quantity.	ORIGINAL PROPRIETOR.	WATER COURSE.	Arable & Plow Land.		Meadow & Pasture Land.		Uncultiv'd & Wood Land.	
						Acres.	H.	Acres.	H.	Acres.	H.
	<i>Irwin E A</i>	<i>5629</i> <i>6493</i>	<i>1866</i>	<i>R Means</i>	<i>Blusseruk</i>	<i>2</i>	<i>1</i>				
	<i>Jolliff Williams</i>	<i>3691</i> <i>5646</i>	<i>1000</i> <i>250</i>	<i>D. Draper</i> <i>J Northrup</i>	<i>Bobseruk</i>	<i>8</i> <i>10</i>				<i>22</i>	
	<i>Jennings James H</i>	<i>5635</i>	<i>1200</i>	<i>J P Gilman</i>	<i>Blusseruk</i>					<i>200</i>	
	<i>Johnson S M G</i>	<i>5635</i>	<i>1200</i>	<i>J P Gilman</i>	<i>Blusseruk</i>	<i>15</i>	<i>5</i>			<i>20</i>	
	<i>James Solomon & others</i>	<i>4405</i>	<i>1333</i>	<i>B. Gimes</i>	<i>Milleruk</i>	<i>12</i>				<i>16 3/4</i>	
	<i>Jolliff Peter</i>	<i>3691</i> <i>5646</i>	<i>1000</i> <i>750</i>	<i>D. Draper</i> <i>J Northrup</i>	<i>Bobseruk</i>	<i>41</i>	<i>35</i>			<i>20</i>	
	<i>Jolliff George W</i>	<i>5646</i>	<i>750</i>	<i>J Northrup</i>	<i>Bobseruk</i>		<i>10</i>			<i>55 1/2</i>	
	<i>Jackson William</i>	<i>4268</i>	<i>1333</i>	<i>John Holmes</i>	<i>Milleruk</i>	<i>15</i>	<i>25</i>			<i>60</i>	
	<i>Jackson James</i>	<i>5641-6443</i> <i>5770-5706</i>	<i>1828</i>	<i>R Means</i>	<i>R Means</i>	<i>10</i>	<i>25</i>			<i>14 1/2</i>	
	<i>James Henry T</i>	<i>3691</i>	<i>1000</i>	<i>D. Draper</i>	<i>Bobseruk</i>	<i>7</i>	<i>3</i>				
	<i>Johnson Elizabeth</i>	<i>3690</i>	<i>1000</i>	<i>D. Draper</i>	<i>Bobseruk</i>	<i>30</i>	<i>10</i>			<i>60</i>	
	<i>James Solomon</i>	<i>4405</i>	<i>1333</i>	<i>B. Gimes</i>	<i>Milleruk</i>	<i>10</i>	<i>15</i>			<i>25</i>	
						<i>160</i>	<i>139</i>			<i>553 1/2</i>	

Whole No. of Acres.	Value per Acre of Land.	Total Value of Lands, excluding Buildings.	Value of all Buildings.			Total Value of Lands and Buildings.	Amount Added or Deducted by Co. Board of Equalization.		Total Value as Equalized by Co. Board.	Amount Added or Deducted by State Board of Equalization.		Total Value as Equalized by State Board.	REMARKS.
			Houses.	Mills.	Other Buildings.		Added Dollars.	Deducted Dollars.		Added Dollars.	Deducted Dollars.		
<i>3</i>	<i>22</i>	<i>66</i>	<i>100</i>			<i>166</i>			<i>166</i>		<i>20</i>	<i>146</i>	
<i>8</i>	<i>20</i>	<i>160</i>	<i>200</i>			<i>360</i>			<i>360</i>		<i>43</i>	<i>317</i>	
<i>42</i>	<i>18</i>	<i>756</i>				<i>756</i>			<i>756</i>		<i>91</i>	<i>665</i>	
<i>200</i>	<i>15</i>	<i>3000</i>				<i>3000</i>			<i>3000</i>		<i>360</i>	<i>2640</i>	
<i>100</i>	<i>16</i>	<i>1600</i>				<i>1600</i>			<i>1600</i>		<i>192</i>	<i>1408</i>	
<i>28 3/4</i>	<i>16</i>	<i>460</i>				<i>460</i>			<i>460</i>		<i>55</i>	<i>405</i>	
<i>90</i>	<i>22</i>	<i>2112</i>	<i>100</i>		<i>150</i>	<i>2362</i>			<i>2362</i>		<i>284</i>	<i>2078</i>	<i>not found</i>
<i>65 1/4</i>	<i>18</i>	<i>1175</i>				<i>1175</i>			<i>1175</i>		<i>141</i>	<i>1034</i>	
<i>100</i>	<i>20</i>	<i>2000</i>			<i>140</i>	<i>2140</i>			<i>2140</i>		<i>257</i>	<i>1883</i>	
<i>29 1/4</i>	<i>22</i>	<i>1184</i>			<i>125</i>	<i>1209</i>			<i>1209</i>		<i>145</i>	<i>1064</i>	
<i>10</i>	<i>20</i>	<i>200</i>				<i>200</i>			<i>200</i>		<i>24</i>	<i>176</i>	
<i>100</i>	<i>18</i>	<i>1800</i>	<i>100</i>			<i>1900</i>			<i>1900</i>		<i>228</i>	<i>1672</i>	
<i>50</i>	<i>20</i>	<i>1000</i>				<i>1000</i>			<i>1000</i>		<i>120</i>	<i>880</i>	
<i>852 3/4</i> <i>857 1/4</i>		<i>15413</i>	<i>500</i>		<i>415</i>	<i>16328</i>			<i>16328</i>		<i>1969</i>	<i>14369</i>	

Assessment of Real Property in *Taylor* Township,

Union County, Ohio, for the Year 1870.

For Plats of all Lands described on this Page, see Page _____ of Plats.	DESCRIPTION OF PROPERTY.				No. of Acres of Land Classified.				Whole No. of Acres.	Value of Land, excluding Buildings.	Value of all Buildings.			Total Value of Lands and Buildings.	Amount Added or Deducted by Co. Board of Equalization.		Total Value as Equalized by Co. Board.	Amount Added or Deducted by State Board of Equalization.		Total Value as Equalized by State Board.	REMARKS.		
					Arable & Flow Land.		Meadow & Pasture Land.				Uncultivated & Wood Land.		Houses.		Mills.	Other Buildings.		Added Dollars.	Deducted Dollars.			Added Dollars.	Deducted Dollars.
					Acres.	H.	Acres.	H.			Acres.	H.	Dollars.		Dollars.	Dollars.		Dollars.	Dollars.			Dollars.	Dollars.
<i>McAdoo William</i>	<i>5-629</i> <i>6493</i>	<i>1866</i>	<i>R Means</i>	<i>Blusecreek</i>	<i>10</i>	<i>15</i>			<i>25</i>	<i>20</i>	<i>600</i>			<i>500</i>			<i>500</i>	<i>60</i>	<i>440</i>				
<i>Maskill Joseph</i>	<i>3691</i>	<i>1000</i>	<i>J Frazer</i>	<i>Bobsecreek</i>	<i>12</i>	<i>41</i>	<i>46</i>	<i>3/4</i>	<i>99</i>	<i>3/4</i>	<i>20</i>	<i>1995</i>	<i>200</i>		<i>2195</i>			<i>2195</i>	<i>243</i>	<i>1931</i>			
<i>Maskill John</i>	<i>3691</i>	<i>1000</i>	<i>J Frazer</i>	<i>Bobsecreek</i>	<i>7</i>	<i>3</i>	<i>11</i>		<i>21</i>	<i>18</i>	<i>378</i>			<i>378</i>			<i>378</i>	<i>45</i>	<i>333</i>				
<i>Maskill Martha</i>	<i>3691</i>	<i>1000</i>	<i>J Frazer</i>	<i>Bobsecreek</i>	<i>9</i>	<i>8</i>	<i>8</i>		<i>25</i>	<i>18</i>	<i>450</i>			<i>450</i>			<i>450</i>	<i>52</i>	<i>396</i>				
<i>Machling Philip</i>	<i>5507</i>	<i>390</i>	<i>B Hill</i>	<i>Blusecreek</i>	<i>13</i>	<i>60</i>	<i>27</i>		<i>100</i>	<i>20</i>	<i>2000</i>		<i>120</i>	<i>2120</i>			<i>2120</i>	<i>254</i>	<i>1866</i>				
<i>Machling J. H.</i>	<i>5507</i>	<i>390</i>	<i>B Hill</i>	<i>Blusecreek</i>	<i>9</i>	<i>26</i>	<i>19</i>		<i>54</i>	<i>18</i>	<i>972</i>			<i>972</i>			<i>972</i>	<i>117</i>	<i>855</i>				
<i>Mills Hiram P.</i>	<i>4405</i>	<i>1333</i>	<i>B. Grimm</i> <i>John Holmes</i>	<i>Millcreek</i>	<i>20</i>		<i>67</i>		<i>84</i>	<i>16</i>	<i>1344</i>			<i>1344</i>			<i>1344</i>	<i>161</i>	<i>1183</i>				
<i>Miller Maynt-</i>	<i>4264</i>	<i>1333</i>	<i>John Holmes</i>	<i>Millcreek</i>	<i>10</i>	<i>40</i>	<i>10</i>		<i>60</i>	<i>22</i>	<i>1320</i>			<i>1320</i>			<i>1320</i>	<i>158</i>	<i>1162</i>				
<i>Miller Sime</i>	<i>4264</i>	<i>1333</i>	<i>John Holmes</i>	<i>Millcreek</i>	<i>7</i>	<i>13</i>	<i>5</i>		<i>25</i>	<i>22</i>	<i>550</i>			<i>550</i>			<i>550</i>	<i>66</i>	<i>484</i>				
<i>McKil Alvin</i>	<i>4264</i>	<i>1333</i>	<i>John Holmes</i>	<i>Millcreek</i>	<i>2</i>	<i>6</i>	<i>17</i>	<i>1/2</i>	<i>25</i>	<i>18</i>	<i>459</i>			<i>459</i>			<i>459</i>	<i>55</i>	<i>404</i>				
<i>Moose Maynt J.</i>	<i>5646</i>	<i>750</i>	<i>J Worthington</i>	<i>Bobsecreek</i>	<i>9</i>	<i>7</i>	<i>13</i>	<i>1/2</i>	<i>29</i>	<i>1/2</i>	<i>20</i>	<i>590</i>			<i>590</i>			<i>590</i>	<i>71</i>	<i>519</i>			
<i>Miller Jacob</i>	<i>5646</i>	<i>750</i>	<i>L. Worthington</i>	<i>Bobsecreek</i>	<i>25</i>	<i>10</i>	<i>17</i>	<i>1/2</i>	<i>52</i>	<i>1/2</i>	<i>14</i>	<i>945</i>			<i>945</i>			<i>945</i>	<i>118</i>	<i>831</i>			
<i>Middleton James</i>	<i>5635</i>	<i>1200</i>	<i>J. Gilmore</i>	<i>Bobsecreek</i>	<i>33</i>	<i>25</i>	<i>42</i>		<i>100</i>	<i>20</i>	<i>2000</i>	<i>100</i>	<i>100</i>	<i>2200</i>			<i>2200</i>	<i>264</i>	<i>1936</i>				
<i>McGinnis Johnson</i>	<i>5635</i>	<i>1200</i>	<i>J. Gilmore</i>	<i>Bobsecreek</i>	<i>3</i>	<i>10</i>			<i>13</i>	<i>1/2</i>	<i>20</i>	<i>270</i>			<i>270</i>			<i>270</i>	<i>32</i>	<i>238</i>			
<i>Moxley Nancy</i>	<i>5-629</i> <i>6493</i>	<i>1866</i>	<i>R Means</i>	<i>Blusecreek</i>	<i>6</i>	<i>2</i>	<i>12</i>		<i>20</i>	<i>18</i>	<i>360</i>			<i>360</i>			<i>360</i>	<i>43</i>	<i>317</i>				
					<i>175</i>	<i>266</i>	<i>293</i>	<i>3/4</i>	<i>734</i>	<i>20</i>	<i>14132</i>	<i>500</i>	<i>220</i>	<i>14653</i>			<i>14653</i>	<i>1758</i>	<i>12995</i>				

Assessment of Real Property in *Taylor* Township,

Union County, Ohio, for the Year 1870.

For Plats of all Lands described on this Page, see Page _____ of Plats.	DESCRIPTION OF PROPERTY.				No. of Acres of Land Classified.						Whole No. of Acres.	Value per Acre, including Exchange.	Total Value of Lands, excluding Buildings.	Value of all Buildings.			Total Value of Lands and Buildings.	Amount Added or Deducted by Co. Board of Equalization.		Total Value as Equalized by Co. Board.	Amount Added or Deducted by State Board of Equalization.		Total Value as Equalized by State Board.	REMARKS.
					Arable & Plow Land.		Meadow & Pasture Land.		Uncultiv'd & Wood Land.					Houses.	Mills.	Other Buildings.		Added Dollars.	Deducted Dollars.		Added Dollars.	Deducted Dollars.		
					Acres.	H.	Acres.	H.	Acres.	H.				Dollars.	Dollars.	Dollars.		Dollars.	Dollars.		Dollars.	Dollars.		
<i>McAdoo Samuel</i>	<i>5629</i> <i>6493</i>	<i>1866</i>	<i>R Means</i>	<i>Blusecreek</i>	<i>10</i>	<i>30</i>	<i>15 1/2</i>				<i>55 1/2</i>	<i>20</i>	<i>1110</i>			<i>150</i>	<i>1260</i>			<i>1260</i>	<i>157</i>	<i>1109</i>		
<i>McAdoo John L</i>	<i>5629</i> <i>6493</i>	<i>1866</i>	<i>R Means</i>	<i>Blusecreek</i>	<i>7</i>		<i>9</i>				<i>10</i>	<i>20</i>	<i>250</i>				<i>200</i>			<i>207</i>	<i>24</i>	<i>76</i>		
<i>McAdoo William</i>	<i>5629</i> <i>6493</i>	<i>1866</i>	<i>R Means</i>	<i>Blusecreek</i>		<i>15</i>	<i>3 1/2</i>				<i>18 1/2</i>	<i>20</i>	<i>370</i>				<i>370</i>			<i>370</i>	<i>44</i>	<i>326</i>		
<i>McAdoo John</i>	<i>5629</i> <i>6493</i>	<i>1866</i>	<i>R Means</i>	<i>Blusecreek</i>	<i>15</i>	<i>12</i>	<i>8 1/2</i>				<i>37 1/4</i>	<i>20</i>	<i>715</i>				<i>715</i>			<i>715</i>	<i>86</i>	<i>629</i>		
<i>McAdoo J. C</i>	<i>5629</i> <i>6493</i>	<i>1866</i>	<i>R Means</i>	<i>Blusecreek</i>	<i>15</i>	<i>20</i>	<i>15</i>				<i>50</i>	<i>20</i>	<i>1100</i>				<i>1000</i>			<i>1000</i>	<i>120</i>	<i>980</i>		
<i>McNeil John</i>	<i>14632</i>	<i>530</i>	<i>J. L Taylor</i>	<i>Blusecreek</i>	<i>20</i>	<i>20</i>	<i>10</i>				<i>50</i>	<i>20</i>	<i>1000</i>				<i>1000</i>			<i>1000</i>	<i>120</i>	<i>880</i>		
<i>McCamy W. R</i>	<i>14632</i>	<i>530</i>	<i>J. L Taylor</i>	<i>Blusecreek</i>	<i>15</i>	<i>23</i>	<i>12</i>				<i>50</i>	<i>18</i>	<i>900</i>			<i>100</i>	<i>1000</i>			<i>1000</i>	<i>120</i>	<i>880</i>		
<i>Mann E. L.</i>	<i>829</i>	<i>1000</i>	<i>Th. Bowyer</i>	<i>Blusecreek</i>	<i>10</i>		<i>6 1/2</i>				<i>16 1/2</i>	<i>20</i>	<i>330</i>				<i>330</i>			<i>330</i>	<i>40</i>	<i>290</i>		
<i>Meeker George W</i>	<i>4405</i>	<i>1333</i>	<i>B. Grimes</i>	<i>Miller creek</i>	<i>10</i>	<i>8</i>	<i>17 1/2</i>				<i>35 1/4</i>	<i>19</i>	<i>635</i>				<i>635</i>			<i>635</i>	<i>76</i>	<i>559</i>		
<i>Moore Jonathan</i>	<i>14632</i>	<i>530</i>	<i>J. L Taylor</i>	<i>Blusecreek</i>	<i>21</i>	<i>35</i>	<i>9 1/4</i>				<i>150</i>	<i>20</i>	<i>3000</i>	<i>500</i>		<i>100</i>	<i>3600</i>			<i>3600</i>	<i>432</i>	<i>3168</i>		
<i>McNeil Elijah</i>	<i>4405</i> <i>4265</i>	<i>1333</i>	<i>B. Grimes</i> <i>John Holmes</i>	<i>Miller creek</i>	<i>10</i>		<i>20 1/2</i> <i>7</i>				<i>30 1/4</i> <i>25</i>	<i>19</i> <i>18</i>	<i>545</i> <i>450</i>				<i>545</i> <i>450</i>			<i>545</i> <i>450</i>	<i>65</i> <i>54</i>	<i>480</i> <i>396</i>		
<i>McNeil Daniel</i>	<i>4405</i>	<i>1333</i>	<i>B. Grimes</i>	<i>Miller creek</i>	<i>12</i>		<i>5 3/4</i>				<i>65</i>	<i>13</i>	<i>845</i>				<i>845</i>			<i>845</i>	<i>101</i>	<i>744</i>		
<i>McAly Addison</i>	<i>13593</i>	<i>100</i>	<i>C. Wallace</i>	<i>Blusecreek</i>							<i>X 3/4</i>													
<i>Middleton David</i>	<i>5235</i>	<i>1200</i>	<i>J. L Taylor</i>	<i>Blusecreek</i>	<i>4</i>	<i>4</i>					<i>8</i>	<i>22</i>	<i>176</i>				<i>176</i>			<i>176</i>	<i>21</i>	<i>155</i>		
<i>McAly Addison</i>	<i>3691</i> <i>1646</i>	<i>1000</i> <i>750</i>	<i>H. Kropfer</i> <i>J. Worthington</i>	<i>Blusecreek</i>	<i>7</i>		<i>45 1/2</i>				<i>7</i> <i>55 1/2</i> <i>60 1/2</i>	<i>20</i> <i>16</i>	<i>140</i> <i>888</i>				<i>140</i> <i>888</i>			<i>140</i> <i>888</i>	<i>17</i> <i>107</i>	<i>123</i> <i>891</i>		
					<i>156</i>	<i>184</i>	<i>322 1/2</i>				<i>662 1/2</i>		<i>1230 1/2</i>	<i>500</i>		<i>350</i>	<i>1315 1/2</i>			<i>1315 1/2</i>	<i>1579</i>	<i>11576</i>		

Assessment of Real Property in Taylor Township,

Union County, Ohio, for the Year 1870.

For Plats of all Lands described on this Page, see Page _____ of Plats.	DESCRIPTION OF PROPERTY.				No. of Acres of Land Classified.						Whole No. of Acres.	Value per Acre including buildings.	Total Value of Lands, excluding Buildings.	Value of all Buildings.			Total Value of Lands and Buildings.	Amount Added or Deducted by Co. Board of Equalization.		Total Value as Equalized by Co. Board.	Amount Added or Deducted by State Board of Equalization.		Total Value as Equalized by State Board.	REMARKS.	
					Arable & Plow Land.		Meadow & Pasture Land.		Uncultivated & Wood Land.					Houses.	Mills.	Other Buildings.		Added Dollars.	Deducted Dollars.		Added Dollars.	Deducted Dollars.			
					Acres.	H.	Acres.	H.	Acres.	H.				Dollars.	Dollars.	Dollars.		Dollars.	Dollars.		Dollars.	Dollars.			Dollars.
IN WHOSE NAME ASSESSED.	No. of Entry.	Orig'l Quantity.	ORIGINAL PROPRIETOR.	WATER COURSE.	Acres.	H.	Acres.	H.	Acres.	H.	Acres.	H.	Dollars.	Dollars.	Dollars.	Dollars.	Dollars.	Dollars.	Dollars.	Dollars.	Dollars.	Dollars.	Dollars.		
Scott Samuel B	14632	530	J W Taylor	Bluescreek	45	20			89		152		2.0	3040				3040		365	2675				
Scott William	14632	530	J W Taylor	Bluescreek	20	30			111		157		1.8	2718				2718		326	2392				
Sayre William	829	1000	W P Bump	Bluescreek	5	10			5 1/2		20 1/2		2.0	410				410		49	361			Relay to John B. Sayre	
Smider Philip	829	1000	W P Bump	Bluescreek	12	40			86 1/2		138 1/2		2.0	2770				2770		332	2438			State M Robinson March 30	
Simpson Joseph	5507	390	B Hill	Bluescreek	15	45			59 3/4		119 3/4		2.0	2395				2395		287	2108				
Shumman David	5507	390	B Hill	Bluescreek	14	4			12		30		2.0	600	100			700		84	616				
Shaw Harrison	4264	1333	John Holmes	Millcreek	35	10			32		77		2.2	1694				1694		203	1491				
Sewell George	4264	1333	John Holmes	Millcreek	6	10			34		50		1.6	800				800		96	704				
Snaft David J	4265	1333	John Holmes	Millcreek	10	20			69 1/4		99 1/4		1.8	1797				1797		214	1583				
Speller Benj	4265	1333	John Holmes	Millcreek	8	4			2		12 3/4		2.0	256				256		30	226				
Shirk John	4265	1333	John Holmes	Millcreek	20	20			23 1/4		63 1/4		2.2	1392				1392		167	1225				
	5294	400	N Reed		1						1		2.5	25	100			125		15	110				
Shirk Adam	5294	400	N Reed	Millcreek	55	65			109		229		2.2	5038	100			5138		618	4520				
Smider David	3691	1000	J Trafer	Bluescreek	70	65			84		219		2.2	4818		150		4968		596	4372				
	5646	750	J Worthington		6						6		2.0	120				120		14	106				
					322		345				704			1369		2796	300		140		2832		3397	2491	

1369

Assessment of Real Property in Township,

Union County, Ohio, for the Year 1870.

Main assessment table with columns for 'IN WHOSE NAME ASSESSED', 'No. of Entry', 'Original Quantity', 'DESCRIPTION OF PROPERTY', 'No. of Acres of Land Classified', 'Value of Land', 'Value of Buildings', 'Amount Added or Deducted', and 'REMARKS'.

Page No 1
2
3
4
5
6
7
8
9
10
11
12
13
14

Handwritten calculations: 1669125, 321233, 1669725, 1978

Handwritten calculations: 166925, 337.844, 2021

Recapitulation of Taxable Valuation
Whol number of acres 16681 1/4
Value of Land \$320,693
Houses 11880
Other buildings 4235
Value of Lands & Buildings \$336,729
Average per acre with Buildings \$20.13
Average per acre without " 19.24
Total Valuation in Sp \$336,929
Total Valuation in Union Co. 540
Total Valuation in Sp Broadway \$13370
Total Valuation in Sp \$350,637

Assessment of Real Property in *Taylor* Township,

Union County, Ohio, for the Year 1870.

For Plats of all Lands described on this Page, see Page _____ of Plats.	DESCRIPTION OF PROPERTY.				No. of Acres of Land Classified.						Value of all Buildings.			Total Value of Lots and Buildings.	Amount Added or Deducted by Co. Board of Equalization.		Total Value as Equalized by Co. Board.	Amount Added or Deducted by State Board of Equalization.		Total Value as Equalized by State Board.	REMARKS.
					Arable & Plow Land.		Meadow & Pasture Land.		Uncultivated & Wood Land.		Houses.	Mills.	Other Buildings.		Added Dollars.	Deducted Dollars.		Added Dollars.	Deducted Dollars.		
IN WHOSE NAME ASSESSED.	No. of Entry.	Orig'l Quantity.	ORIGINAL PROPRIETOR.	WATER COURSE.	Acres.	H.	Acres.	H.	Acres.	H.	Dollars.	Dollars.	Dollars.	Dollars.	Dollars.	Dollars.	Dollars.	Dollars.	Dollars.		
					172		37														
			<i>Summary of Taylor Township</i>		<i>3659</i>		<i>3598</i>		<i>8424</i>	<i>4</i>			<i>16681</i>	<i>32068</i>	<i>11880</i>	<i>4235</i>	<i>326795</i>		<i>9000</i>	<i>2013</i>	

Assessment of Lots in the Town of *Union Centre*

Union County, Ohio, for the Year 1870.

For Plats of all Lots described on this Page, see Page _____ of Plats.	DESCRIPTION OF PROPERTY.						Value of Lots. Dollars.
	IN WHOSE NAME ASSESSED.	ADDITION.	No. of In-Lot.	No. of Out-Lot.	WHAT PART OF LOT.	No. Feet Front.	
	<i>Barkley Edward</i>		<i>38</i>		<i>all</i>		<i>20</i>
	<i>Bull Maudie E</i>		<i>45</i>		<i>all</i>		<i>5</i>
	<i>Bull Phoebe M</i>		<i>33</i>		<i>all</i>		<i>20</i>
	<i>Centre Ward Co</i>		<i>34</i>		<i>all</i>		<i>5</i>
			<i>40</i>		<i>,</i>		<i>5</i>
			<i>41</i>		<i>,</i>		<i>5</i>
			<i>42</i>		<i>,</i>		<i>5</i>
			<i>43</i>		<i>,</i>		<i>5</i>
			<i>44</i>		<i>,</i>		<i>5</i>
	<i>Dauphin David</i>		<i>37</i>		<i>all</i>		<i>5</i>
	<i>Goff N P</i>		<i>1</i>		<i>all</i>		<i>5</i>
			<i>2</i>		<i>,</i>		<i>5</i>
			<i>3</i>		<i>,</i>		<i>5</i>
			<i>4</i>		<i>,</i>		<i>5</i>
			<i>5</i>		<i>,</i>		<i>5</i>
			<i>6</i>		<i>,</i>		<i>5</i>
			<i>7</i>		<i>,</i>		<i>5</i>
			<i>8</i>		<i>,</i>		<i>5</i>
			<i>9</i>		<i>,</i>		<i>5</i>
			<i>10</i>		<i>,</i>		<i>5</i>
			<i>11</i>		<i>,</i>		<i>5</i>
			<i>12</i>		<i>,</i>		<i>5</i>
	<i>Mackling Philip P</i>		<i>48</i>		<i>all</i>		<i>5</i>
	<i>Redman L</i>		<i>46</i>		<i>all</i>		<i>5</i>
			<i>47</i>		<i>,</i>		<i>5</i>
	<i>Pooler James</i>		<i>39</i>		<i>all</i>		<i>30</i>

Value of all Buildings.			Total Value of Lots and Buildings. Dollars.	Amount Added or Deducted by Co. Board of Equalization.		Total Value as Equalized by Co. Board. Dollars.	Amount Added or Deducted by State Board of Equalization.		Total Value as Equalized by State Board. Dollars.	REMARKS.
Houses. Dollars.	Mills. Dollars.	Other Buildings. Dollars.		Added Dollars.	Deducted Dollars.		Added Dollars.	Deducted Dollars.		
<i>100</i>			<i>120</i>			<i>120</i>	<i>120</i>	<i>14</i>		<i>All to Mary J Walters</i>
			<i>5</i>			<i>5</i>	<i>5</i>	<i>1</i>		
<i>75</i>			<i>95</i>			<i>95</i>	<i>95</i>	<i>11</i>		<i>All to Maudie E Ball</i>
			<i>5</i>			<i>5</i>				
			<i>5</i>			<i>5</i>				
			<i>5</i>			<i>5</i>				
			<i>5</i>			<i>5</i>				
			<i>5</i>			<i>5</i>				
			<i>5</i>			<i>5</i>	<i>30</i>	<i>4</i>		
			<i>5</i>			<i>5</i>				<i>All to Isaac Gater</i>
			<i>5</i>			<i>5</i>				
			<i>5</i>			<i>5</i>				
			<i>5</i>			<i>5</i>				
			<i>5</i>			<i>5</i>				
			<i>5</i>			<i>5</i>				
			<i>5</i>			<i>5</i>				
			<i>5</i>			<i>5</i>				
			<i>5</i>			<i>5</i>	<i>60</i>	<i>7</i>		
			<i>5</i>			<i>5</i>				
			<i>5</i>			<i>5</i>				
			<i>5</i>			<i>5</i>				<i>All to Phesant</i>
			<i>5</i>			<i>5</i>				
<i>70</i>			<i>100</i>			<i>100</i>		<i>12</i>		
			<i>430</i>			<i>430</i>		<i>41</i>		

Assessment of Lots in the Town of Union Centre

Union County, Ohio, for the Year 1870.

For Plats of all Lots described on this Page, see Page _____ of Plats.	DESCRIPTION OF PROPERTY.						Value of Lots. Dollars.	Value of all Buildings.			Total Value of Lots and Buildings. Dollars.	Amount Added or De- ducted by Co. Board of Equalization.		Total Value as Equalized by Co. Board. Dollars.	Amount Added or De- ducted by State Board of Equal- ization.		Total Value as Equalized by State Board. Dollars.	REMARKS.	
	IN WHOSE NAME ASSESSED.	ADDITION.	No. of In-Lot.	No. of Out-Lot.	WHAT PART OF LOT.	No. Feet Front.		No. Feet Depth.	Houses.	Mills.		Other Buildings.	Added Dollars.		Deducted Dollars.	Added Dollars.			Deducted Dollars.
Robbins Mary J		27		all			5					5							
'		28		'			5					5							
'		29		'			5					5							
'		30		'			5					5							
'		31		'			5					5							
'		32		'			5					5							
'		35		'			5					5			35		4		
Robbins L S		25		all			5					5						1	
Robbins James W		26		all			5					5						1	
Robbins Charles		36		all			5					5						1	
Sayre William		13		all			5					5							
'		14		'			5					5							
'		15		'			5					5							
'		16		'			5					5							
'		17		'			5					5							
'		18		'			5					5							
'		19		'			5					5							
'		20		'			5					5							
'		21		'			5					5							
'		22		'			5					5							
'		23		'			5					5							
'		24		'			5					5			60		7		
		(110					110			110			Total Value \$540	

Assessment of Lots in the Town of Broadway

Union County, Ohio, for the Year 1870.

For Plats of all Lots described on this Page, see Page _____ of Plats.	DESCRIPTION OF PROPERTY.						Value of Lots. Dollars.	Value of all Buildings.			Amount Added or Deducted by Co. Board of Equalization.		Total Value as Equalized by Co. Board. Dollars.	Amount Added or Deducted by State Board of Equalization.		Total Value as Equalized by State Board. Dollars.	REMARKS.			
	IN WHOSE NAME ASSESSED.	ADDITION.	No. of In-Lot.	No. of Out-Lot.	WHAT PART OF LOT.	No. Feet Front.		No. Feet Depth.	Houses.	Mills.	Other Buildings.	Dollars.		Dollars.	Dollars.			Dollars.	Dollars.	Dollars.
									Dollars.	Dollars.	Dollars.									
Archer James		46		all			80						x	50	10	70	All to James Marshall			
Benson John R		11		all			75						x	75	9	66				
Burkham Rebecca J		5-1		1/2 east end			50	100			150		x	150	18	132				
Ball Argo		30		all			100	400			500		x	500	60	440				
Crawston Pelly		26		all			75				75			75	9	66	All to George Fineman			
		27		,			100	500			600			600	72	528				
		28		,			75				75			75	9	66				
		35		,			40				40			40	5	35				
		36		,			45				45			45	5	40				
		37		,			50				50			50	6	44	All to Williams			
		38		,			50				50			50	6	44	All to John Hindall			
		42		,			75				75			75	9	66				
		43		,			75	100			175		x	175	21	154	All to Louisa A Moore Jan 14 1870			
		45		,			60				60			60	7	53				
		75		,			40				40			40	5	35				
		76		,			40				40			40	5	35				
		77		,			40				40			40	5	35				
		78		,			40				40			40	5	35				
		79		,			40				40			40	5	35				
		80		,			40				40			40	5	35				
		81		,			40				40			40	5	35				
Case Newton		13		,			60	100			160			160	19	141				
Cogens John		5-1		part			50	250			300			300	36	264				
		5-2		all			75				75			75	9	66				
x Crawford John		14		,			75	550			625			625	75	550				
Culver Lydia E		6		all			75	250			325			325	39	286				
		9		,			75				75			75	9	66				
x Crawford John		15		,			65				65			65	8	57				
Draper Silenus		24		all			75	250			325			325	39	286				
							1780				4280			4280	515					

For Plats of all Lots described on this Page, see Page _____ of Plats.	DESCRIPTION OF PROPERTY.						Value of Lots. Dollars.	Value of all Buildings.			Total Value of Lots and Buildings. Dollars.	Amount Added or Deducted by Co. Board of Equalization.		Total Value as Equalized by Co. Board. Dollars.	Amount Added or Deducted by State Board of Equalization.		Total Value as Equalized by State Board. Dollars.	REMARKS.
	IN WHOSE NAME ASSESSED.	ADDITION.	No. of In-Lot.	No. of Out-Lot.	WHAT PART OF LOT.	No. Feet Front.		No. Feet Depth.	Houses.	Mills.		Other Buildings.	Added Dollars.		Deducted Dollars.	Added Dollars.		
Green John L		51		Part			50	100			150			150	18		132	
Green Joel		5		all			75				75			75	9		66	
Graves Jane M		7		all			75	300			375			375	45		330	
Hisey Benj John		40		all			100	550			650			650	78		572	John Hisey.
Hisey Benj		44		,			75				75			75	9		66	
Hard Albert N		34		all			75	225			400			400	48		352	
Jackson Daniel J		41		,			75	175			250			250	30		220	See Minutes Amsting Jan 26 78 70
Jenkins Jessie		21		,			75	300			375			375	45		330	
Lewis Morris		12		,			75	250			325			325	39		286	
Martin Benj O		29		all			75	550			625			625	75		550	
Mulford David		23		all			75	250			325			325	39		286	
McCracken James E		22		all			100	700			800			800	96		704	See Minutes J. Starting Jan 29 70
Marble Nathau		4		all			75				75			75	9		66	
Merritt John A		2		all			100	500	100		700			700	84		616	
Monis John		3		all			75	500			575			575	69		506	
Parker John S		39		all			100	250			350			350	42		308	
							1275	4750	100		6125			6125	735			

Assessment of Lots in the Town of Broadway

Union County, Ohio, for the Year 1870.

IN WHOSE NAME ASSESSED.	ADDITION.	DESCRIPTION OF PROPERTY.		No. Feet		Value of Lots.
		No. of In-Lot.	No. of Out-Lot.	Front.	Depth.	
Pooler G. C.		1				75
'		8				65
'		10				75
'		47				50
'		48				40
'		49				40
'		58				40
Richey Leonard		16				60
'		17				60
'		18				65
'		19				65
Mills Barbara B		59				50
'		60				70
'		61				50
'		62				40
'		63				40
'		64				40
'		69				40
'		70				40
'		71				40
'		72				40
'		73				40
'		74				40
'		20				75
'		65				40
Wood John A		66				40
		25				75
						1395
						75
						1320

Houses.	Value of all Buildings.		Total Value of Lots and Buildings.	Amount Added or Deducted by Co. Board of Equalization.		Total Value as Equalized by Co. Board.	Amount Added or Deducted by State Board of Equalization.		Total Value as Equalized by State Board.	REMARKS.
	Dollars.	Dollars.		Added Dollars.	Deducted Dollars.		Added Dollars.	Deducted Dollars.		
100			175			175			21	154
100			165			165			20	145
500			575	X		575			69	506
			50			50			6	44
			40			40			5	35
			40			40			5	35
			40			40			5	35
			60			60			7	53
			60			60			7	53
			65			65			8	57
			65			65			8	57
			50			50			6	44
			70			70			8	62
			50			50			6	44
			40			40			5	35
			40			40			5	35
			40			40			5	35
			40			40			5	35
			40			40			5	35
			40			40			5	35
			40			40			5	35
			40			40			5	35
			40			40			5	35
			75			75			9	66
			40			40			5	35
			40			40			5	35
			75			75			9	66
			40			40			5	35
			40			40			5	35
			75			75			9	66
			75			75			9	66
700			2095			2095				
572			575	X		575				
200			1520			1520				

2120
 6121
 4250
 12521
 10500

Assessment of Lots in the Town of Broadway

Union County, Ohio, for the Year 1870.

For Plats of all Lots described on this Page, see Page _____ of Plats.	DESCRIPTION OF PROPERTY.						Value of Lots. Dollars.
	In Whose Name Assessed.	Addition.	No. of In-Lot.	No. of Out-Lot.	WHAT PART OF LOT.	No. Feet Front.	
Yearsley Nathan	31				all		100
	32				,		70
Yearsley Thomas	56				all		50
	57				,		50
	58				,		50
	53				,		50
	54				,		50
	55				,		50
	11		32				470
							75
							545
							1780
							1275
							1320
							545
							4920

Value of all Buildings.			Total Value of Lots and Buildings. Dollars.	Amount Added or Deducted by Co. Board of Equalization.		Total Value as Equalized by Co. Board. Dollars.	Amount Added or Deducted by State Board of Equalization.		Total Value as Equalized by State Board. Dollars.	REMARKS.
Houses. Dollars.	Mills. Dollars.	Other Buildings. Dollars.		Added Dollars.	Deducted Dollars.		Added Dollars.	Deducted Dollars.		
600			700		700	84		616		
			70		70	8		62		
			50		50	6		44		
			50		50	6		44		
			50		50	6		44		
			50		50	6		44		
			60		60	6		44		
			50		50	6		44		
600			1070		1070	48		1022		
300			375		375	48		327		
900			1445		1445	96		1349		
2500			4280		4280	144		4136		
4750	100		6125		6125	144		5981		
200			1520		1520	144		1376		
900			1445		1445	144		1301		
8350	100		8370		8370	576		7794	supposed to be John Bault	

**TAYLOR TP.
UNION COUNTY
1870**