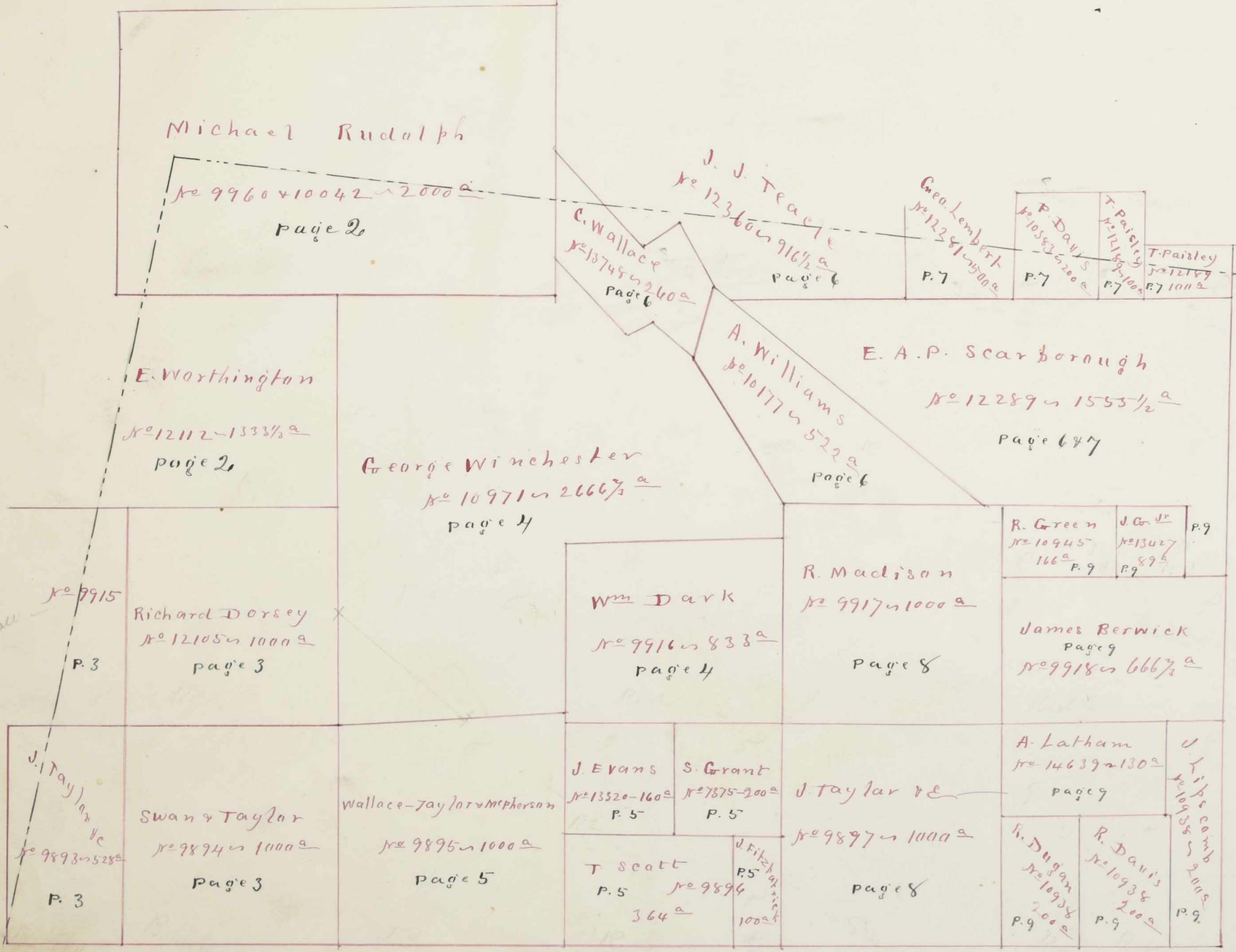
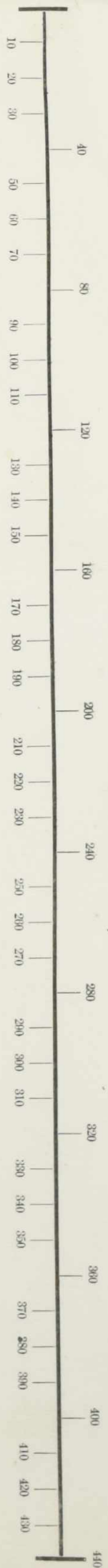


**WASHINGTON TP.  
UNION COUNTY  
1870**



Section, No. Lot

Scale, 40 Rods to an Inch, or 10 Rods to 1-4 Inch.



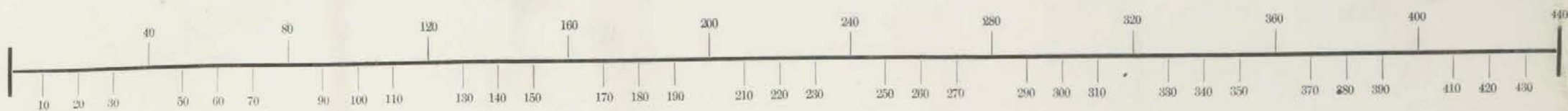
*Chas. J. Tolls  
On Sandwall*

*Worthington*



Section, No. \_\_\_\_\_ Lot \_\_\_\_\_

Scale, <sup>80</sup>~~40~~ Rods to an Inch, or <sup>20</sup>~~10~~ Rods to 1-4 Inch.



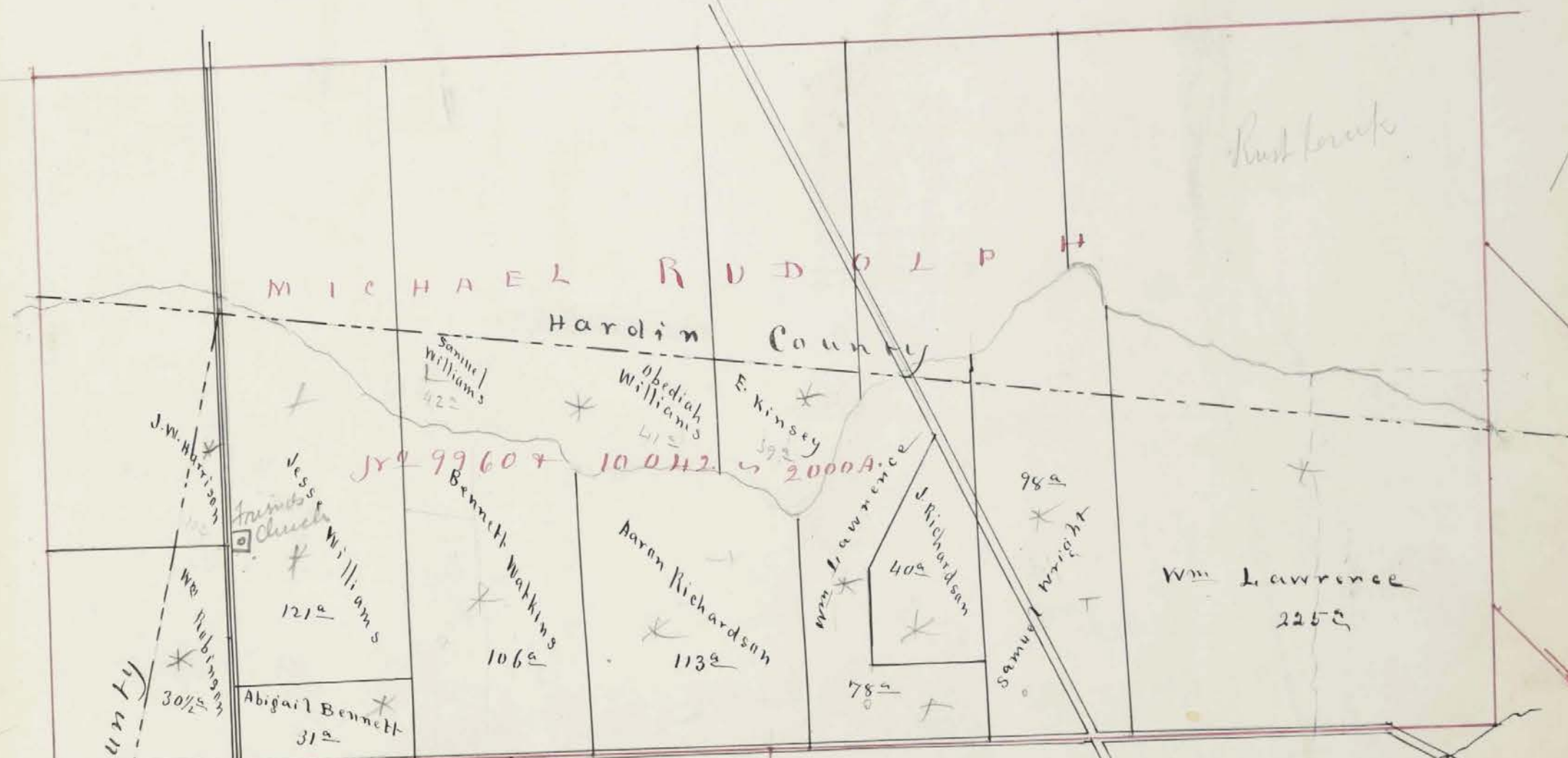
(one)

Here  
See PC

Rust Creek

MICHAEL RUDOLPH

Hardin County



Jr 9960 + 10012 = 2000 Acre

Wm. Lawrence  
225<sup>a</sup>

Logan County

ELIZABETH WORTHINGTON

No 12112 = 1333<sup>1</sup>/<sub>4</sub> Acre

Shannon Reed 335<sup>a</sup>

134

Rust Creek

E. O. Stephenson  
& Minerva C. Evans  
198<sup>a</sup>





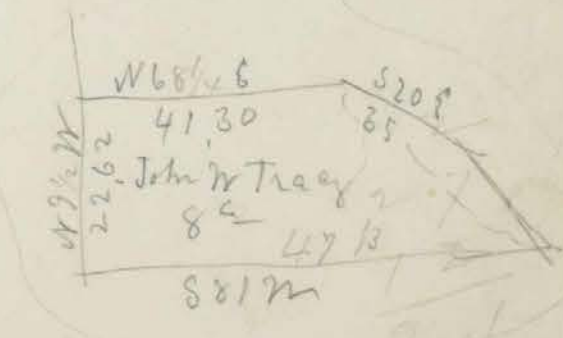
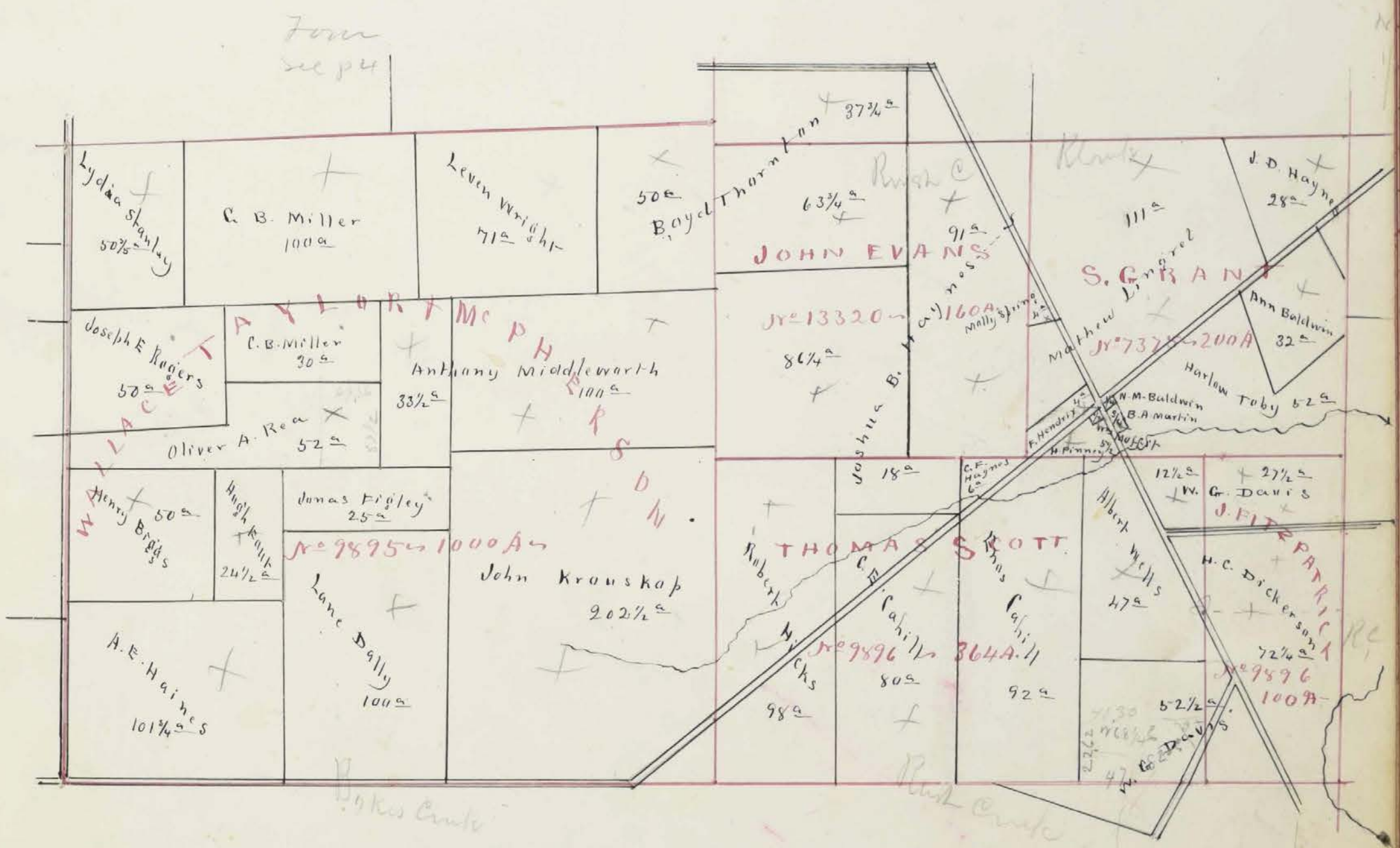
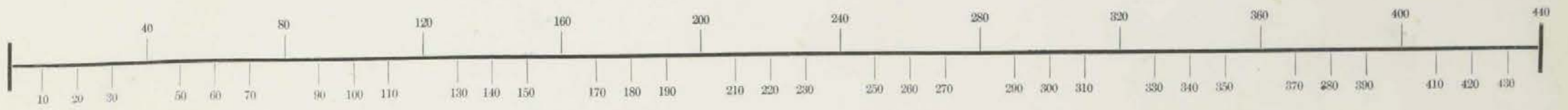






Section, No. \_\_\_\_\_ Lot \_\_\_\_\_

Scale, 40 Rods to an Inch, or <sup>20</sup> Rods to 1-4 Inch.





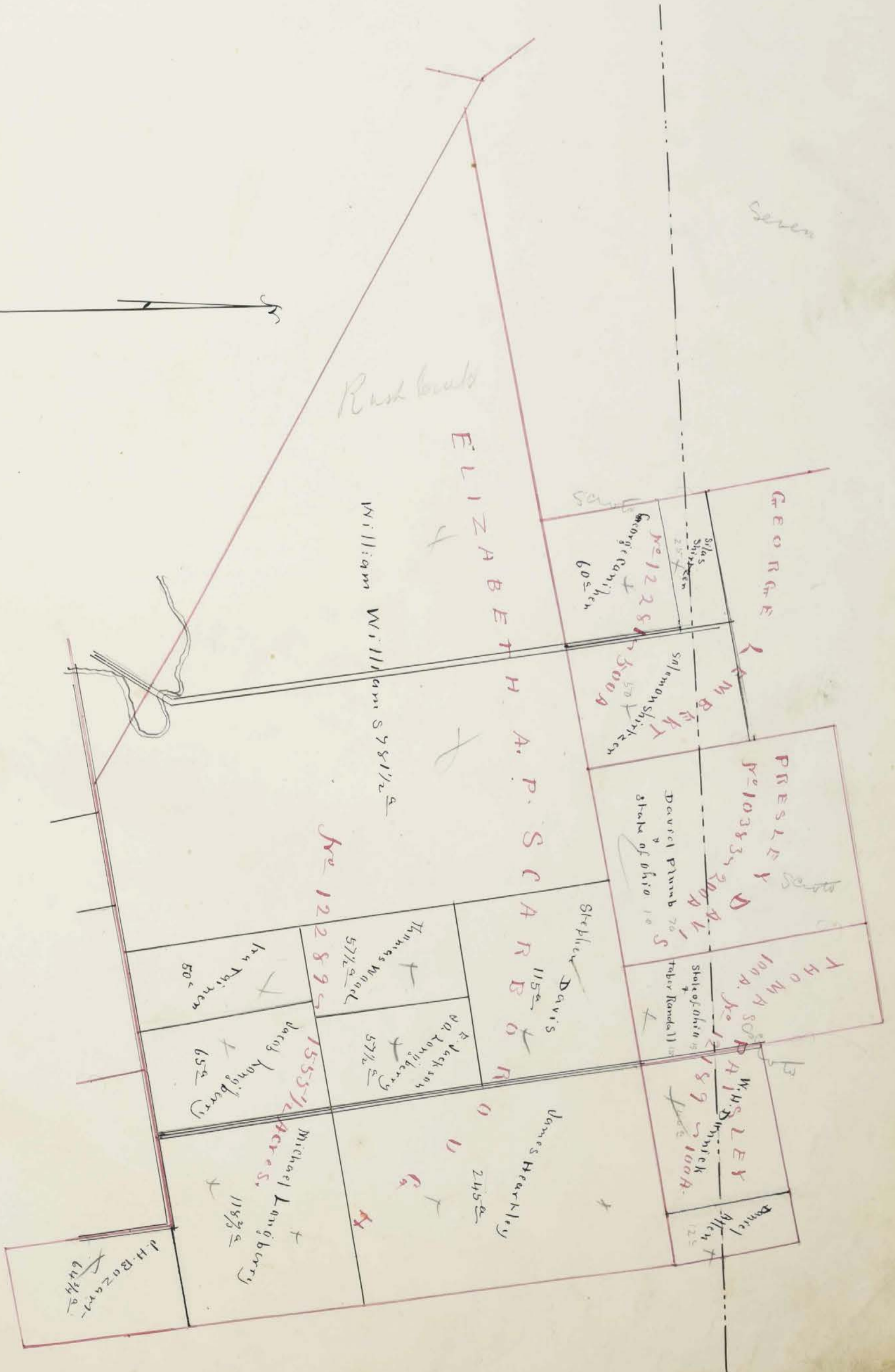
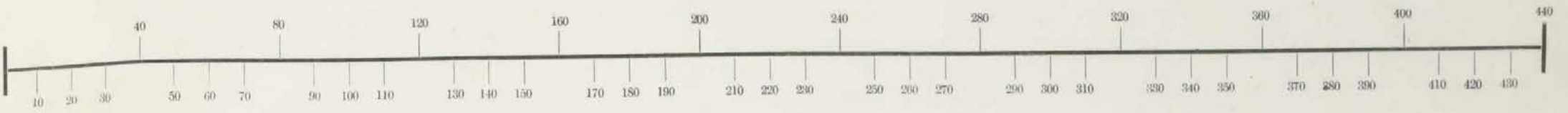




Section, No.

Lot

Scale, <sup>80</sup>40 Rods to an Inch, or <sup>20</sup>10 Rods to 1-4 Inch.

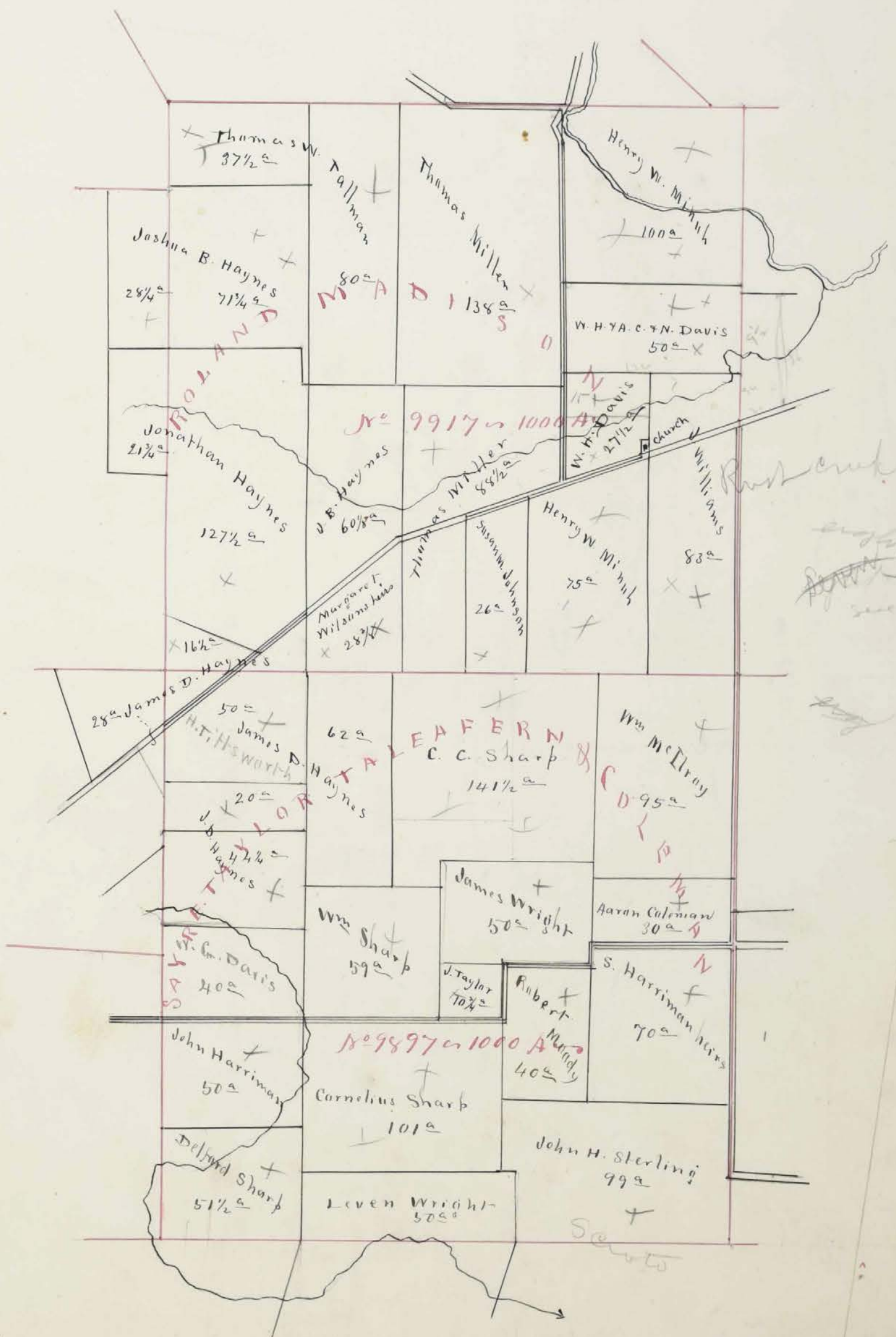
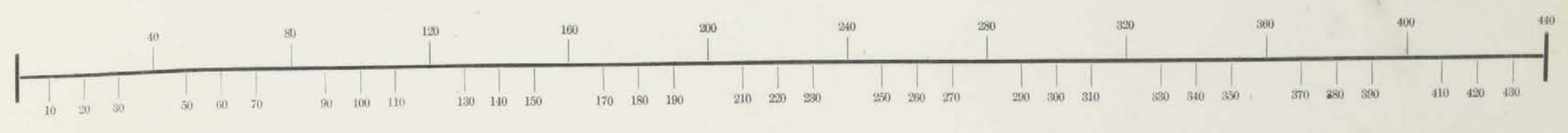


12/5



Section, No. \_\_\_\_\_ Lot \_\_\_\_\_

Scale, <sup>50</sup>~~40~~ Rods to an Inch, or <sup>20</sup>~~10~~ Rods to 1-4 Inch.

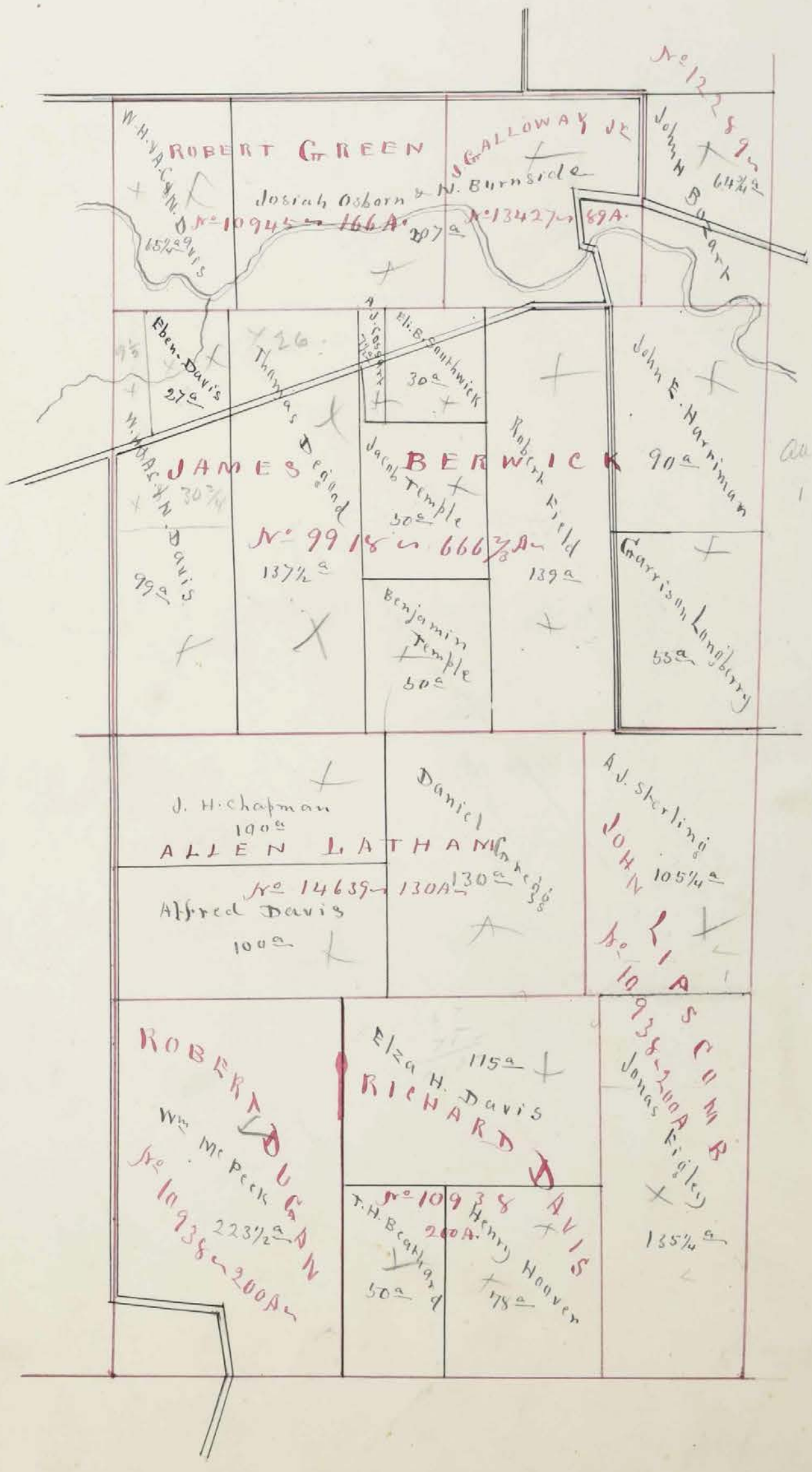
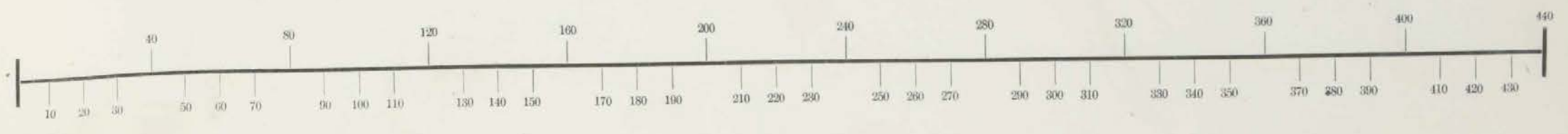


50
16 1/2
28
20
44
61
219 1/2
28 1/4
68



Section, No. \_\_\_\_\_ Lot \_\_\_\_\_

Scale, <sup>80</sup>40 Rods to an Inch, or <sup>20</sup>10 Rods to 1-4 Inch.



30  
720  
39.42

99  
57  
60



# Assessment of Real Property in *Washington* Township,

# Union County, Ohio, for the Year 1870.

For Plats of all Lands described on this Page, see Page _____ of Plats.	DESCRIPTION OF PROPERTY.				No. of Acres of Land Classified.						Whole No. of Acres.	Value per Acre, including Buildings.	Total Value of Lands, excluding Buildings.	Value of all Buildings.			Total Value of Lands and Buildings.	Amount Added or Deducted by Co. Board of Equalization.		Total Value as Equalized by Co. Board.	Amount Added or Deducted by State Board of Equalization.		Total Value as Equalized by State Board.	REMARKS.
					Arable & Plow Land.		Meadow & Pasture Land.		Uncultivated & Wood Land.					Houses.	Mills.	Other Buildings.		Added Dollars.	Deducted Dollars.		Added Dollars.	Deducted Dollars.		
					Acres.	H.	Acres.	H.	Acres.	H.														
Allyn Walter	9916	833	W Dark	Rusheruk	15	61	125	1/4	209 1/4	21	4359				4359			4389	527	3862				
Allyn Pelatiah	9916	833	W Dark	Rusheruk	35	23	29		90	24	2160				2160			2160	259	1901				
Allyn W A	9894	1000	Swan Taylor	Botseruk					1 1/2												No such land			
Allyn Daniel	12159	1000	Th Peasley	Rusheruk					12	10	120				120			120		14	105			
Baldwin Ann	7375	200	R Davis	Rusheruk	10	5	17		32	15	576				576			576		69	507			
Booth Thomas	12105	1000	R Dorsey	Rusheruk	12	2	24	1/2	38 1/2	16	605				605			605		73	535			
Bird James E	12105	1000	R Dorsey	Rusheruk	12	50	115		170	15	3110		200	3260	3260			3260		391	2869	17/2570 1/16 102 15		
Bird J	12105	1000	R Dorsey	Rusheruk	15	15	31	1/2	64 1/2	15	1152				1152			1152		138	1014			
Bird Albert	12105	1000	R Dorsey	Rusheruk	12		53	3/4	65 3/4	15	1170	300		1470	1470			1470		179	1293			
Bird William	12105	1000	R Dorsey	Rusheruk	21	15	235	1/2	277 1/2	15	4986	400		5386	5386			5386		646	4740			
-	9915	1000	Tibbatts & Mandevill	-			89		89	12	1065			1065	1065			1065		129	940			
✓	9894	1000	Swan Taylor	-			64		64	14	596			596	596			596		108	788			
Biggs Thomas	9894	1000	Swan Taylor	Rusheruk	14	5	35		57	15	1026			1026	1026			1026		123	903			
Bolan Henry Alexander	9915	1000	Tibbatts & Mandevill	Botseruk	26	4	47	1/4	77 1/4	15	1386			1386	1386			1386		111	1220			
Bolan Mary	9915	1000	Tibbatts & Mandevill	Botseruk	4	11	46	1/2	61 1/2	16	976			976	976			976		117	859			
Bennett Abigail	9960 10242	200	Mc Randolph	Rusheruk	9	11	11		31	17	527			527	527			527		63	464			
Biggs Henry	9895	1000	Wallace Taylor	Rusheruk	15		35		30	16	510			510	510			510		96	704			
Burnside Nathan	10945 13472	255	Green & Falloway	Rusheruk	60	51	55	1/4	165 1/4	20	3300	200		3500	3500			3500		420	3080			
Blackburn John	12112	1330	E R Worthington	Rusheruk	25		45		70	18	1260			1260	1260			1260		151	110990	Acres to Ad. Tallman Jan 7-1870		
Baldwin Stephen H	12112	1330	E R Worthington	Rusheruk			70	1/2	70 1/2	12	840			840	840			840		101	739			
Bethard Thomas W	10938	1000	R Davis	Rusheruk			50		50	12	600			600	600			600		72	528			
Bohart John A	12289	1000	E A Scarborough	Rusheruk	34	10	31		65	20	1300			1300	1300			1300		156	1144			
Baldwin N M	7375	200	R Davis	Rusheruk					14			150		150	150			150		18	132	House lot in Perryville		
					325	273	1212		1810		32200	450	200	200	33450	33450			33450		4014	29486		



# Assessment of Real Property in Washington Township,

# Union County, Ohio, for the Year 1870.

For Plats of all Lands described on this Page, see Page _____ of Plats.			DESCRIPTION OF PROPERTY.	No. of Acres of Land Classified.						Whole No. of Acres.	Value for Acres including buildings.	Total Value of Lands, excluding Buildings.	Value of all Buildings.			Total Value of Lands and Buildings.	Amount Added or Deducted by Co. Board of Equalization.		Total Value as Equalized by Co. Board.	Amount Added or Deducted by State Board of Equalization.		Total Value as Equalized by State Board.	REMARKS.
In Whose Name Assessed.	No. of Entry.	Orig'l Quantity.		Arable & Plow Land.	Meadow & Pasture Land.	Uncultivated & Wood Land.	Acres.	H.	Acres.				H.	Acres.	H.		Houses.	Mills.		Other Buildings.	Added Dollars.		
Cahill C. E.	9896	364	John Scott	Rushcreek	25		41		15			80	20	1600			1600			192	1409		
Cahill Enos	9896	364	John Scott	Rushcreek	20		25		47			92	19	1748			1748			210	1538		
Camihor George	12281	500	Geo Lambert	Rushcreek	11		6		43			60	14	540			540			101	739		
Crandy Michael	12105-1000		R Dorsey	Rushcreek	13		14		20	1/2		47 1/2	18	546			546			102	744		
Crappman Joseph A.	14639	130	Allen Latham	Rushcreek	23		16		61			100	14	1400	200		1600			192	1409		
Clapradale George W.	9894	1000	Swain Taylor	Bolescreek	9		4		51			64	17	1088			1088			130	968		
Columan Aaron	9897	1000	Talfeen Taylor	Bolescreek	12		8		10			20	18	540	100		640			77	563		
Cassil John	9916	889	W Drake	Rushcreek								100	12	1200			1200			144	1056		
	9895	1000	Wallace Taylor						100														
Cassat Am Jane	9918	466	J B Bernick	Rushcreek	2				5 1/4			7 1/4	16	112			112			13	99		
Carant Wesley	9916	889	W Drake	Rushcreek	1				1 1/2			2 1/2	20	40			40			5	36		
Douglas Cyrus	9916	833	W Drake	Rushcreek	12				2 1/2	1/2		14 1/2	20	280			280			34	246		
Davis M. A. A. G. W.	9917	600	R Madison	Rushcreek	8		25		17			50	20	1000			1000			120	880		
	10945	160	R Green		30		10		25 1/4			65 1/4	19	1235			1235			148	1087		
	9918	666	J Bernick		21		20		59			99	15	1445	100		1545			190	1355		
Davis Ebenezer	9918	666	J B Bernick	Rushcreek	2		20		5			27	18	486			486			58	428		
Duncan Ruf H.	12112	1333	E. R. Worthington	Rushcreek					198			198	12	2376			2376			295	2091		
Dyord Thomas	9918	666	J B Bernick	Rushcreek	2				135 1/2			137 1/2	13	1781			1781			214	1567		
Davis Stephen	12289	1555	E. A. Scarborough	Rushcreek	16		2		97			115	10	1150			1150			138	1012		
Dowell Robert M. Bushon	9894	1000	Swain Taylor	Bolescreek			40					40	20	800		100	900			108	792		
Davis W. G.	9896	366	John Scott	Bolescreek	6				6 1/2			12 1/2	20	240			240			29	211	H. C. Dickerson	
	9897	1000	J B Bernick	Rushcreek	12		10		18			40	20	800			800			96	704		
Davis Washington	9896	366	John Scott	Bolescreek	40		10		30			80	22	1760			1760			211	1549		
Davis George H.	10938	1000	R Davis	Rushcreek	25				90			115	15	1725			1725			207	1518		
Davis W. S.	9917	1000	R Madison	Rushcreek	6		20		1 1/2			2 1/2	18	486			486			58	428		
Dally Lane	9895	1000	Wallace Taylor	Rushcreek	10				90			100	16	1600			1600			192	1408		
Dickinson J. H.	9896	366	John Scott	Bolescreek	35				37 1/4			72 1/4	22	1584			1584			190	1394	W. S. Davis	
					340		270		1166 3/4			1776 3/4		28702	400		29102			3448	9		
																	29202						



Assessment of Real Property in *Washington* Township,

Union County, Ohio, for the Year 1870.

For Plats of all Lands described on this Page, see Page _____ of Plats.		DESCRIPTION OF PROPERTY.				No. of Acres of Land Classified.				Whole No. of Acres.	Value per Acre for Equalizing Buildings.	Total Value of Lands, excluding Buildings.	Value of all Buildings.			Total Value of Lands and Buildings.	Amount Added or Deducted by Co. Board of Equalization.		Total Value as Equalized by Co. Board.	Amount Added or Deducted by State Board of Equalization.		Total Value as Equalized by State Board.	REMARKS.
IN WHOSE NAME ASSESSED.	No. of Entry.	Orig'l Quantity.	ORIGINAL PROPRIETOR.	WATER COURSE.	Arable & Plow Land.	Meadow & Pasture Land.	Uncultiv'd & Wood Land.	Acres.	H.				Acres.	H.	Acres.		H.	Houses.		Mills.	Other Buildings.		
<i>Dominick W A</i>	10971	1000	<i>J W Winchester</i>	<i>Bobseruck</i>	18	14	95	127	18	2286	100	2386				2386		2386	286	2100			
	12189		<i>The Peasley</i>		6		35	44	11	440		440				440		440	53	387			
	9916	833	<i>W Darke</i>		30	10	60	100	22	2200		2300	100			2300		2300	276	2024			
<i>Davis Alfred</i>	14639	130	<i>Allen Latham</i>		20	5	75	100	13	1300		1300				1300		1300	156	1144			
<i>Evans Minerva G</i>	12112	1333	<i>E R Worthington</i>	<i>Rusheruck</i>			107	107	12	1284		1284				1284		1284	154	1130			
<i>Frigley James</i>	10938	200	<i>Limpson</i>	<i>Rusheruck</i>	15		120 1/2	135 1/2	14	1890		1890				1890		1890	227	1663			
<i>Helds Robert</i>	9918	666	<i>J P Bennett</i>	<i>Rusheruck</i>	14	44	27	135	18	2430		2430				2430		2430	292	2138			
								4	15	72													
<i>Haut-Hugh</i>	9894	1000	<i>Swain Taylor</i>	<i>Bobseruck</i>	28	7	15	30	20	1000	100	1100				1100		1100	132	968			
	9895	1000	<i>Wallice Taylor</i>				24 1/2	24 1/2	12	258		258				258		258	35	253			
<i>Haut-Jackson</i>	9894	1000	<i>Swain Taylor</i>	<i>Bobseruck</i>	6		5 1/2	11 1/2	16	176		176				176		176	21	155			
<i>Horsman John W</i>	10971	266	<i>J W Winchester</i>	<i>Rusheruck</i>	40	20	216	276	18	4768		4768				4768		4768	572	4196			
<i>Gray John</i>	9916	833	<i>W Darke</i>	<i>Rusheruck</i>	60	50	96 1/2	206 1/2	22	4532	200	4832		100		4832		4832	580	4252			
<i>Green Henry B</i>	9894	1000	<i>Swain Taylor</i>	<i>Bobseruck</i>	18	92	51 1/2	53 1/2	20	3320	400	3620				3620		3620	434	3186	<i>all to Henry Green</i>		
								117 3/4															
<i>Green George R</i>	9894	1000	<i>Swain Taylor</i>	<i>Bobseruck</i>	15	40	95	100	20	3000	200	3200		200		3400		3400	408	2992			
	9893		<i>W J. Rousdale</i>					50															
<i>Green John C</i>	9893	1000	<i>W J. Rousdale</i>	<i>Bobseruck</i>	8	2	86	96	15	1440		1440				1440		1440	173	1267			
<i>Gregg Daniel</i>	14639	130	<i>Allen Latham</i>	<i>Rusheruck</i>			130	130	12	1560		1560				1560		1560	187	1373			
<i>Grading Mathew</i>	10971	833	<i>J W Winchester</i>	<i>Rusheruck</i>			259	259	13	3367		3367				3367		3367	404	2963			
<i>Haynes Jonathan D</i>	9916	833	<i>W Darke</i>	<i>Rusheruck</i>	12		9 3/4	21 3/4	22	462		462				462		462	58	407			
	9917	1000	<i>R Madison</i>		40	77	10 1/2	127 1/2	23	2921	100	3021				3021		3021	363	2658			
<i>Haines J B</i>	9917	1000	<i>R Madison</i>	<i>Rusheruck</i>	12		59 3/4	71 3/4	17	1207		1207				1207		1207	146	1061			
	9916	833	<i>W Darke</i>				25 1/4	28 1/4	15	420		420				420		420	50	370			
<i>Harrisoning W R</i>	12105	1000	<i>R Dowsley</i>	<i>Rusheruck</i>			14	14	12	168		168				168		168	20	148			
<i>Harrison Jonathan W</i>	9960 10042	2000	<i>M Randolph</i>	<i>Rusheruck</i>			3	10	20	200		200				200		200	24	176			
<i>Haynes Joshua B</i>	13320	160	<i>John Evans</i>	<i>Rusheruck</i>	25	139	30 1/2	117 1/2	22	4268	200	4468		300		4768		4768	572	4196			
	9896	364						18															
	9917	1000	<i>R Madison</i>					58 1/2															
					424	510	1156 1/2	2580 1/2		44827	1800	46627		700		46327		46327	5220	41207			







# Assessment of Real Property in Washington Township,

# Union County, Ohio, for the Year 1870.

For Plats of all Lands described on this Page, see Page _____ of Plats.				DESCRIPTION OF PROPERTY.					No. of Acres of Land Classified.			Value of all Buildings.			Total Value of Lands and Buildings.		Amount Added or Deducted by Co. Board of Equalization.		Total Value as Equalized by Co. Board.		Amount Added or Deducted by State Board of Equalization.		Total Value as Equalized by State Board.		REMARKS.
IN WHOSE NAME ASSESSED.				No. of Entry.	Orig'l Quantity.	ORIGINAL PROPRIETOR.	WATER COURSE.	Arable & Plow Land.	Meadow & Pasture Land.	Uncultivated & Wood Land.	Whole No. of Acres.	Value per Acre of Buildings.	Total Value of Lands, excluding Buildings.	Houses.	Mills.	Other Buildings.	Dollars.	Dollars.	Added Dollars.	Deducted Dollars.	Dollars.	Added Dollars.	Deducted Dollars.	Dollars.	
Acres.	H.	Acres.	H.	Acres.	H.	Acres.	H.	Acres.	H.	Acres.	H.	Dollars.	Dollars.	Dollars.	Dollars.	Dollars.	Dollars.	Dollars.	Dollars.	Dollars.	Dollars.	Dollars.	Dollars.		
Lanman William	9960	200	M. Randolph	Rushcreek	75	35	198					303	18	5454			5454			5454			658	4799	
Lingell Mathew	7375	200	S. Grant	Rushcreek	45	50	16					111	24	2664	150	100	2914			2914			350	2564	
Lingell Jeremiah	9894	1000	Shaw Taylor	Batescreek	15	14	12					44	18	792			792			792			95	697	
Lingberry Michael	12289	1535	E.P. Scarborough	Rushcreek	38	10	70 3/4					118 3/4	14	1652			1652			1652			198	1454	
Lingberry Jacob	12289	1535	E.P. Scarborough	Rushcreek	25		40					65	14	910			910			910			109	801	
Lingberry James	9918	666	J.P. Burwell	Rushcreek	17		35					35	14	770			770			770			92	678	
Miller Thomas	9917	1000	R. Madison	Rushcreek	42	50	184					226	19	4294	100	200	4594			4594			551	4043	
Massie Henry	13748	260	G. Wallace	Rushcreek			75					75	12	900			900			900			108	792	
"	12360	916	J. Seale	"			187					187	12	2244			2244			2244			269	1975	
Middleworth Anthony	9895	1000	Wallace Taylor	Rushcreek	15		118 1/2					133 1/2	15	1995			1995			1995			239	1756	
Moody Robert	9897	1000	Talferus Taylor	Rushcreek	16		24					40	16	640			640			640			77	563	
M. Beck William	10938	200	R. Davis	Rushcreek	45	80	98 1/2					223 1/2	20	4460	100	300	4860			4860			593	4277	
Mellroy William	9897	1000	Talferus Taylor	Rushcreek	17		75					95	14	1330			1330			1330			160	1170	
Mingus Henry W	9817	1000	R. Madison	Rushcreek	52	37	85 1/2					174 1/2	20	3480		100	3580			3580			430	3150	
Miller G B	9895	1000	Wallace Taylor	Rushcreek	30		70					100	19	1900			1900			1900			228	1672	
Moore Jessie	10971	266	J. Winchester	Rushcreek	20		128 1/2					148 1/2	13	1924			1924			1924			231	1693	
Maberry A	12112	1333	E.R. Worthington	Rushcreek	7	5	78 3/4					90 3/4	14	1260	150		1410			1410			169	1241	
Maffitt William	7375	200	S. Grant	Rushcreek								12		400		200	1000			1000			120	880	
Martin B A	7375	200	S. Grant	Rushcreek								3 1/4		150		200	150			150			18	132	
								462	281	1448 3/4		2191 3/4		36669	1450	900	39019			39019			4682	34337	

226  
 203  
 230  
 4234  
 4902  
 4334  
 200  
 4534







# Assessment of Real Property in *Washington* Township,

# Union County, Ohio, for the Year 1870.

For Plats of all Lands described on this Page, see Page _____ of Plats.	DESCRIPTION OF PROPERTY.				No. of Acres of Land Classified.				REMARKS.				
	IN WHOSE NAME ASSESSED.	No. of Entry.	Orig'l Quantity.	ORIGINAL PROPRIETOR.	WATER COURSE.	Arable & Plow Land.		Meadow & Pasture Land.		Unimproved & Wood Land.			
						Acres.	H.	Acres.			H.	Acres.	H.
<i>Stanley Sydel</i>	<i>9895</i>	<i>1000</i>		<i>Wallace Taylor</i>	<i>Rushcreek</i>	<i>15</i>		<i>5</i>		<i>20</i>			
<i>Sterling John H</i>	<i>9897</i>					<i>10</i>		<i>30</i>		<i>59</i>			
<i>Sharp Selden</i>	<i>9897</i>	<i>1000</i>		<i>Wallace Taylor</i>	<i>Rushcreek</i>	<i>10</i>		<i>10</i>		<i>31</i>			
<i>Sharp Cornelius</i>	<i>9897</i>	<i>1000</i>		<i>Wallace Taylor</i>	<i>Rushcreek</i>	<i>12</i>				<i>89</i>			
<i>Sharp William</i>	<i>9897</i>	<i>1000</i>		<i>Wallace Taylor</i>	<i>Rushcreek</i>	<i>12</i>				<i>47</i>			
<i>Sharp C C</i>	<i>9897</i>	<i>1000</i>		<i>Wallace Taylor</i>	<i>Rushcreek</i>					<i>141</i>			
<i>Spring Mollie</i>	<i>7375</i>	<i>2000</i>		<i>S Grant</i>	<i>Rushcreek</i>	<i>1</i>		<i>3</i>					
<i>State of Ohio</i>	<i>10383</i>	<i>200</i>		<i>P Davis</i>	<i>Rushcreek</i>					<i>10</i>			
	<i>12189</i>	<i>100</i>		<i>Thos Peasly</i>	<i>Bo Rescreek</i>					<i>19</i>			
<i>Sterling A James</i>	<i>10938</i>	<i>200</i>		<i>J Lambert</i>	<i>Rushcreek</i>	<i>15</i>				<i>90</i>			
<i>Stephens E O</i>	<i>12112</i>	<i>1333</i>		<i>E R Worthington</i>	<i>Rushcreek</i>					<i>94</i>			
<i>Simpson Solomon</i>	<i>9893</i>	<i>1000</i>		<i>Reverdy Taylor Secy</i> <i>W H Randolph</i>	<i>Bo Rescreek</i>	<i>10</i>		<i>10</i>		<i>35</i>			
<i>Silvers D A</i>	<i>10971</i>	<i>2666</i>		<i>J W Winchester</i>	<i>Bo Rescreek</i>	<i>103</i>		<i>34</i>		<i>237</i>			
<i>Silvers John G</i>	<i>10971</i>	<i>2666</i>		<i>J W Winchester</i>	<i>Bo Rescreek</i>	<i>40</i>				<i>89</i>			
<i>Shorter Solomon</i>	<i>12291</i> <del><i>9898</i></del>	<i>500</i> <del><i>1000</i></del>		<i>J Lambert</i>	<i>Rushcreek</i>	<i>13</i>		<i>8</i>		<i>29</i>			
<i>Sherwood Andrew A</i>	<i>10971</i>	<i>2666</i>		<i>J W Winchester</i>	<i>Bo Rescreek</i>	<i>3</i>				<i>65</i>			
<i>Sherwood Samuel</i>	<i>10971</i>	<i>2666</i>		<i>J W Winchester</i>	<i>Bo Rescreek</i>	<i>20</i>		<i>12</i>		<i>115</i>			
<i>Starnates Harrison</i>	<i>10971</i>	<i>2666</i>		<i>J W Winchester</i>	<i>Bo Rescreek</i>					<i>120</i>			
	<i>9916</i>	<i>833</i>		<i>W Dark</i>		<i>18</i>		<i>20</i>		<i>31</i>			
<i>Shorter Silas</i>	<i>12381</i>	<i>500</i>		<i>J Lambert</i>	<i>Bo Rescreek</i>	<i>4</i>				<i>21</i>			
<i>Southwick Eli B</i>	<i>9918</i>	<i>666</i>		<i>J Bernick</i>	<i>Bo Rescreek</i>	<i>5</i>		<i>7</i>		<i>15</i>			
<i>Stevenson E Elias</i>	<i>10971</i>	<i>2666</i>		<i>J W Winchester</i>	<i>Bo Rescreek</i>	<i>75</i>				<i>635</i>			
<i>Sterling A James &amp; John H</i>	<i>10971</i>	<i>2666</i>		<i>J W Winchester</i>	<i>Bo Rescreek</i>	<i>25</i>				<i>165</i>			
<i>Southard Milton</i>	<i>9893</i>	<i>1000</i>		<i>W H Paulle</i>	<i>Bo Rescreek</i>	<i>15</i>		<i>12</i>		<i>36</i>			
						<i>409</i>		<i>151</i>		<i>2134</i>			

Whole No. of Acres.	Value per Acre including Buildings.	Total Value of Lands, excluding Buildings.	Value of all Buildings.			Total Value of Lands and Buildings.	Amount Added or Deducted by Co. Board of Equalization.		Total Value as Equalized by Co. Board.	Amount Added or Deducted by State Board of Equalization.		Total Value as Equalized by State Board.	REMARKS.
			Houses.	Mills.	Other Buildings.		Added Dollars.	Deducted Dollars.		Added Dollars.	Deducted Dollars.		
			Dollars.	Dollars.	Dollars.		Dollars.	Dollars.		Dollars.	Dollars.		
<i>50 3/4</i>	<i>15</i>	<i>900</i>			<i>900</i>			<i>900</i>		<i>108</i>	<i>792</i>		
<i>99</i>	<i>20</i>	<i>1980</i>			<i>1980</i>			<i>1980</i>		<i>238</i>	<i>1742</i>		
<i>51 1/2</i>	<i>15</i>	<i>918</i>			<i>918</i>			<i>918</i>		<i>110</i>	<i>808</i>		
<i>101</i>	<i>14</i>	<i>1414</i>			<i>1414</i>			<i>1414</i>		<i>170</i>	<i>1244</i>		
<i>59 1/2</i>	<i>14</i>	<i>826</i>			<i>826</i>			<i>826</i>		<i>99</i>	<i>727</i>		
<i>141 1/2</i>	<i>13</i>	<i>1833</i>			<i>1833</i>			<i>1833</i>		<i>220</i>	<i>1613</i>		
<i>4</i>	<i>50</i>	<i>200</i>	<i>100</i>		<i>300</i>			<i>300</i>		<i>36</i>	<i>264</i>		
<i>10</i>	<i>10</i>	<i>100</i>			<i>100</i>			<i>100</i>		<i>12</i>	<i>88</i>		
<i>19</i>	<i>10</i>	<i>190</i>			<i>190</i>			<i>190</i>		<i>23</i>	<i>167</i>		
<i>105 1/4</i>	<i>14</i>	<i>1470</i>			<i>1470</i>			<i>1470</i>		<i>176</i>	<i>1294</i>		
<i>94</i>	<i>13</i>	<i>1128</i>			<i>1128</i>			<i>1128</i>		<i>135</i>	<i>993</i>		
<i>58</i>	<i>20</i>	<i>1160</i>			<i>1160</i>			<i>1160</i>		<i>139</i>	<i>1021</i>		
<i>374</i>	<i>17</i>	<i>6358</i>			<i>6358</i>			<i>6358</i>		<i>763</i>	<i>5595</i>	<i>All to John G. Silvers - 131 acres - 1870</i>	
					<del><i>2322</i></del>							<i>107 acres - 1870</i>	
<i>129 1/2</i>	<i>15</i>	<i>2322</i>			<i>2322</i>			<i>2322</i>		<i>279</i>	<i>2043</i>	<i>All to John W. Foreman Mt - 1870</i>	
<i>50</i>	<i>15</i>	<i>750</i>	<i>100</i>		<i>850</i>			<i>850</i>		<i>102</i>	<i>748</i>		
<i>68</i>	<i>13</i>	<i>884</i>			<i>884</i>			<i>884</i>		<i>106</i>	<i>778</i>		
<i>150</i>	<i>18</i>	<i>2700</i>		<i>200</i>	<i>2900</i>			<i>2900</i>		<i>348</i>	<i>2552</i>		
<i>42</i>	<i>12</i>	<i>504</i>			<i>504</i>			<i>504</i>		<i>60</i>	<i>444</i>		
<i>69</i>	<i>23</i>	<i>1587</i>	<i>300</i>	<i>100</i>	<i>1987</i>			<i>1987</i>		<i>238</i>	<i>1749</i>		
<i>28</i>	<i>13</i>	<i>325</i>			<i>325</i>			<i>325</i>		<i>39</i>	<i>286</i>		
<i>30</i>	<i>18</i>	<i>540</i>			<i>540</i>			<i>540</i>		<i>65</i>	<i>475</i>		
<i>710</i>	<i>15</i>	<i>10650</i>			<i>10650</i>			<i>10650</i>		<i>1278</i>	<i>9372</i>		
<i>190</i>	<i>15</i>	<i>2850</i>			<i>2850</i>			<i>2850</i>		<i>342</i>	<i>2508</i>		
<i>63</i>	<i>18</i>	<i>1134</i>			<i>1134</i>			<i>1134</i>		<i>136</i>	<i>998</i>		
<i>2694</i>		<i>42728</i>	<i>500</i>	<i>300</i>	<i>43528</i>			<i>43523</i>		<i>1222</i>	<i>38301</i>		
<i>2694</i>												<i>121</i> <i>140</i> <i>123</i> <i>34301</i>	



# Assessment of Real Property in *Washington* Township,

# Union County, Ohio, for the Year 1870.

For Plats of all Lands described on this Page, see Page _____ of Plats.			DESCRIPTION OF PROPERTY.				No. of Acres of Land Classified.				Whole No. of Acres.	Value per Acre including Buildings.	Total Value of Lands, excluding Buildings.	Value of all Buildings.			Total Value of Lands and Buildings.	Amount Added or Deducted by Co. Board of Equalization.		Total Value as Equalized by Co. Board.	Amount Added or Deducted by State Board of Equalization.		Total Value as Equalized by State Board.	REMARKS.
In Whose Name Assessed.	No. of Entry.	Orig'l Quantity.	ORIGINAL PROPRIETOR.	WATER COURSE.	Acres.	H.	Acres.	H.	Acres.	H.				Houses.	Mills.	Other Buildings.		Added Dollars.	Deducted Dollars.		Added Dollars.	Deducted Dollars.		
Lamuir Ira	12289	1555	E. A. Scarborough	Rushcreek	15		2		33		50	14	700			700		700		84	616			
Litwirth Hiram	9897	1000	Lulliford Tyler	Rushcreek	2		28		20		50	22	1100	300		1400		1400		168	1232			
Thronton Boyd	13320	166	John Evans	Rushcreek	16		20		28		64	20	1250			1250		1250		154	1126			
"	9916	833	W. S. Dark	"	12		20		5	3/4	37 3/4	22	912	100	200	1114		1114		134	980			
"	9875	1000	Wallace Taylor	"	8				42		50	14	700			700		700		84	616			
Follman Thomas M.	9917	1000	R. Madison	Rushcreek	40		12		28		80	18	1440			1440		1440		173	1267			
Thompson Ely W.	12360	916	Jo. Sakle	Rushcreek					140		37 1/2	18				675		675		87	574			
Toby Harlow	7375	200	R. Davis	Rushcreek	22		6		24		52	28	1196	100		1296		1296		156	1146			
Temple Benjamin	9918	666	Jo. Bennet	Rushcreek	5				45		50	12	600			600		600		72	528			
Temple Jacob	9918	666	Jo. Bennet	Rushcreek	10				40		50	13	650			650		650		78	572			
Follman Thos M.	4917	1000	R. Madison	Rushcreek					37 1/2		37 1/2	13	481			481		481		58	423			
Temple John H.	10971	1000	Geo. Muehler	Rushcreek	15		4		21		40	19	760			760		760		91	669			
Van Buren's David	13289	1535	A. P. Scarborough	Rushcreek	18		8		31 1/2		57 1/2	15	855			855		855		103	752			
Wilson Marguer	9917	1000	R. Madison	Rushcreek	6				24		30	15	450			450		450		54	396			
Williams J.	9917	1000	R. Madison	Rushcreek	13		81		39		83	18	1494	100		1594		1594		191	1403			
Williams William	12339	1555	E. A. Scarborough	Rushcreek	50		200		531 1/2		781 1/2	18	14058			14058		14058		1687	12371			
"	10177	523	A. S. Williams	"					458		523	14	7322			7322		7322		879	6443	Williams		
Williams Henry	9893	1000	W. B. Ruddle	Rushcreek							50 1/2													
"	9894		Swan Taylor	"	21		30		99 1/4		100	20	3000			3000		3000		360	2640	2900 200 3100		
Wallace John	9894	1000	Swan Taylor	Rushcreek	16		12		47		75	14	1050			1050		1050		126	924			
Williams Samuel	9960 10042	200	M. Rudolph	Rushcreek	10		9		23		42	18	756			756		756		90	666			
Wright Samuel	9960 10042	200	M. Rudolph	Rushcreek	32		25		41		98	20	1960	300		2260		2260		279	1989			
Williams Obediah	9960 10042	200	M. Rudolph	Rushcreek	12				29		41	18	738			738		738		88	650			
Williams Jessie	9960 10042	200	M. Rudolph	Rushcreek	60		12		47		121	22	2662	1100		3062		3062		367	2695			
					383		489		1831		2303		45606	1300	200	47106		47106		5653	41463			



# Assessment of Real Property in Washrafton Township,

# Union County, Ohio, for the Year 1870.

For Plats of all Lands described on this Page, see Page _____ of Plats.	DESCRIPTION OF PROPERTY.				No. of Acres of Land Classified.				REMARKS.	
	No. of Entry.	Orig'l Quantity.	ORIGINAL PROPRIETOR.	WATER COURSE.	Arable & Plow Land.	Meadow & Pasture Land.	Uncultivated & Wood Land.			
IN WHOSE NAME ASSESSED.	No. of Entry.	Orig'l Quantity.	ORIGINAL PROPRIETOR.	WATER COURSE.	Acres.	H.	Acres.	H.	Acres.	H.
Watkins Bennett	9760 10042	200	M Rudolph	Bakerick	51		6		50	
Wright James	9897	1000	Jaciferus Taylor	Bakerick	12				34	
Wright Lurie	9897 9895	1000	Jaciferus Taylor	Bakerick	15				35	
			Mallae Taylor	"					71	
Willis John D	12105	1000	R Dorsey	Bakerick	14		7		21	
Webster L C	10971	2664	Jes Mutchers	Bakerick					210	
Wood Thomas	12289	1535	E A Scarborough	Bakerick					57 1/2	
Whitney A J	13748 12360	260 910	C Mallae Jd Clarke	Bakerick					210 40	
Williams Mathias	9893	1000	M Rudolph	Bakerick	15		30		43	
Wellwood William	12105	1000	R Dorsey	Bakerick	16		9		22 1/2	
Willis Albert	9896	364	John Scott	Bakerick	31		12		4	
					153		64		302	
					325		213		1212	
					340		270		1116 3/4	
					424		500		1656 1/2	
					265		267		1036 1/2	
					462		291		1443 3/4	
					122		73		741 1/2	
					409		151		2134	
					353		489		1931	
					153		64		302	
					2883		2368		12029	

17261 ) 298001 (1723-  
 17261  
 17261  
 130923  
 47068  
 25780  
 36401

17281 ) 287681 (1647  
 17281  
 1,54871  
 1,53636  
 566850  
 81640  
 27130  
 125160

Whole No. of Acres.	Value per acre excluding Buildings.	Total Value of Lands, excluding Buildings.	Value of all Buildings.			Total Value of Lands and Buildings.	Amount Added or Deducted by Co. Board of Equalization.		Total Value as Equalized by Co. Board.	Amount Added or Deducted by State Board of Equalization.		Total Value as Equalized by State Board.
			Houses.	Mills.	Other Buildings.		Added Dollars.	Deducted Dollars.		Added Dollars.	Deducted Dollars.	
Acres.	H.	Dollars.	Dollars.	Dollars.	Dollars.	Dollars.	Dollars.	Dollars.	Dollars.	Dollars.	Dollars.	
106		20	2120			2120			2120	257	1966	
50		15	750			750			750	90	660	
50		15	750			750			750	90	660	
71		12	852			852			852	102	750	
42		18	756	100		856			852	103	753	
210		13	2730			2730			2730	328	2402	
57 1/2		10	570			570			570	68	502	
210		13	2730			2730			2730	328	2402	
40		13	520			520			520	62	458	
84		20	1760			1760			1760	211	1549	
47 1/2		16	752			752			752	90	662	
47		22	1034			1034			1034	124	910	
1019			15324	100		15424			15424	1850	13574	
1910			32200	850	200	33450			33450	4014	29436	
1776	3/4		24702	400	100	29202			28702	3444	25259	
3580	1/2		44827	1300	700	46827			46827	5620	41207	
1568	1/2		27913	400	600	29313			29313	3579	25735	
2171	3/4		36669	1450	900	39019			39019	4682	34337	
936	1/2		13817	300	100	14217			14217	1707	12510	
2694			42723	500	300	43523			43523	5222	38301	
2703			45606	1300	200	47106			47106	5253	41853	
1019			15324	100		15424			15424	1850	13574	
17280			287691	6600	3000	298091			297591	38710	261971	



# Assessment of Real Property in

# Township,

For Plats of all Lands described on this Page, see Page _____ of Plats.		DESCRIPTION OF PROPERTY.				No. of Acres of Land Classified.					
IN WHOSE NAME ASSESSED.	No. of Entry.	Orig'l Quantity.	ORIGINAL PROPRIETOR.	WATER COURSE.	Arable & Plow Land.		Meadow & Pasture Land.		Uncultivated & Wood Land.		
					Acres.	H.	Acres.	H.	Acres.	H.	
District School	1										
"	2										
"	3										
"	4										
"	5										
"	6										
			Churches								
			Grave yards								

No. of Acres	Value Per Acre	Value of Lands	Value of Home	Total Value
1/4	20	5	150	156
			150	150
1/2	20	10	175	186
1/4	24	6	100	106
1/4	24	6	150	156
			100	100
1/4		27	525	652
1/4	24	30	300	330
1/2	24	12	300	312
1 3/4		42	600	642
1/2	30	15		15



**WASHINGTON TP.  
UNION COUNTY  
1870**