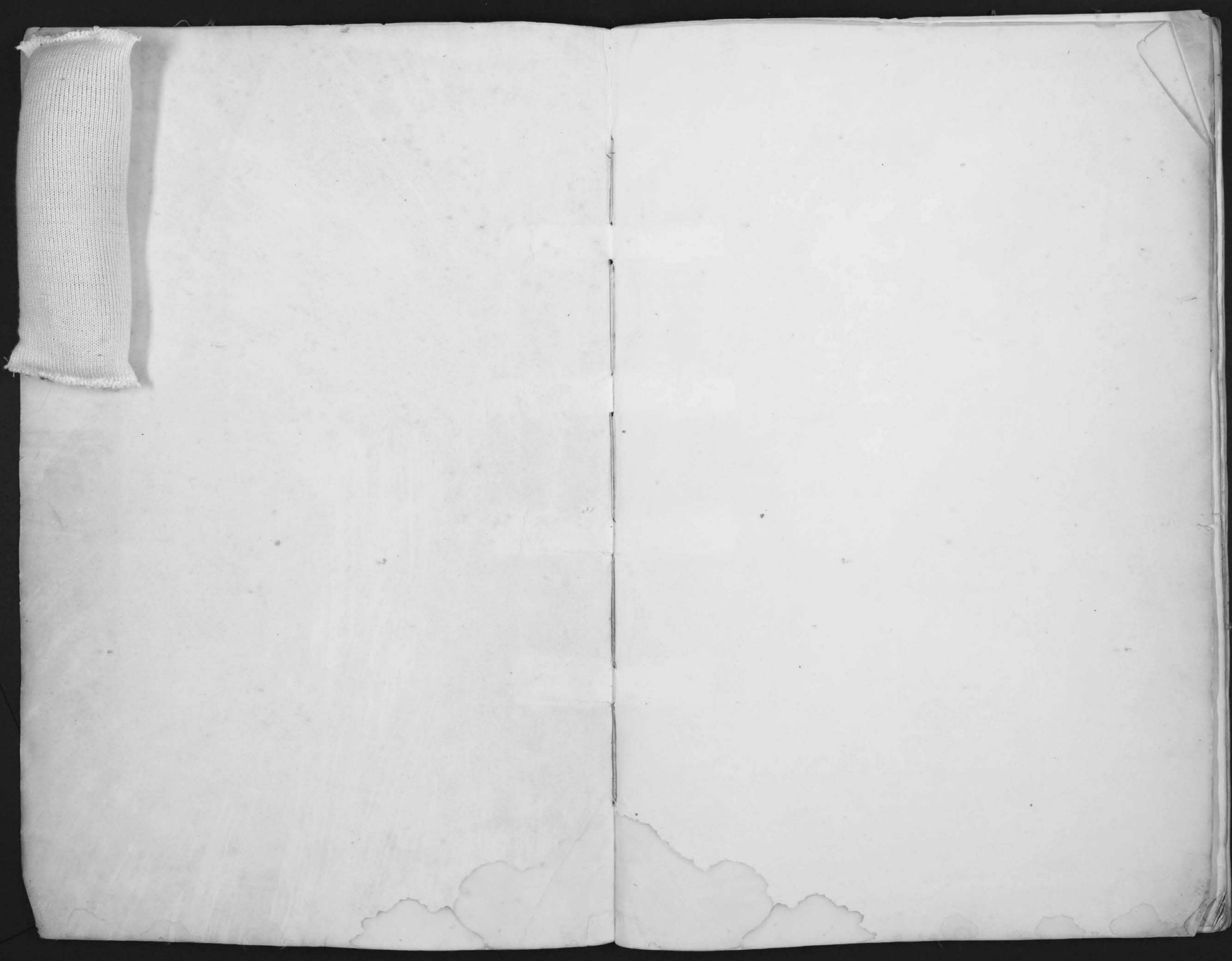


Allen

1855

Dixon Mitchell

Assessor



Description and Value of Lands and Town Lots in *Allen* Township,

Union County, Ohio, as Returned by *Lizant Mitchell* Appraiser for 1859.

OWNERS' NAMES.	NO. OF ENTRY.	ORIGINAL QUANTITY.	ORIGINAL PROPRIETORS.	WATER COURSES.	No. of Lots.	No. of ACRES.	Value per ACRE. \$ C.
<i>Andas William</i>	3681	1000	<i>L. Sullivan</i>	<i>Darby Creek</i>	121		15
" "	12081-12744	82	<i>Sam & Clark</i>	" "	45		14
<i>Allen John</i>	3163	800	<i>Richard & Thomas</i>	" "	53		20
<i>Allen Isaac</i>	2780	"	<i>J. M. Gregory</i>	" "	70		15
<i>Allen O. V.</i>	158	1200	<i>C. Simms</i>	" "	78		12
<i>Abraham J. V.</i>	2667	1000	<i>W. T. Pears</i>	" "	84		20
<i>Austin Gains</i>	4533	500	<i>Wm. Sears</i>	" "	54		15
<i>Beltz Adam</i>	3747	600	<i>Jas. Coleman</i>	" "	100		12
<i>Bauer Joseph</i>	158	1200	<i>Orad. Simms</i>	" "	50		12
<i>Bell William</i>	"	"	" "	" "	50		10
<i>Bell Tom L.</i>	3163	800	<i>R. Stephenson</i>	" "	181		17
<i>Brodwick Isaac</i>	2667	1000	<i>R. Stephenson</i>	" "	75		20
" "	3152	200	<i>Wm. Carter</i>	" "	50		6
" "	7022	866	<i>Nice Hayward</i>	" "	53 1/2		7
" "	2581	1000	<i>H. Cartmoune</i>	" "	4		10
<i>Beltz J. C.</i>	102	740	<i>H. Whiting</i>	" "	40		44
" " "	2833-3681	2000	<i>Sullivan & Manifold</i>	" "	38	60	18
" " "	2833	1000	<i>P. Manifold</i>	" "	22		
<i>Baker J. O.</i>	3747	600	<i>J. Coleman</i>	" "	140		7
<i>Bales & C. Morse</i>	4880	250	<i>John Gains</i>	" "	185-215		7
" " "	"	"	" "	" "	3		
<i>Brodwick Isaac</i>	2667	1000	<i>R. Stephenson</i>	" "	108		16
<i>Clark Caleb</i>	2833	1000	<i>P. Manifold</i>	" "	171		18
" "	"	"	" "	" "	120		16
" "	12308	"	<i>Mary Vance</i>	" "	221		8
<i>Clark James</i>	2833	1000	<i>P. Manifold</i>	" "	77		8
<i>Cook William</i>	2875	"	<i>S. Wallace</i>	" "	7		7
<i>Childs J. P. Sm.</i>			<i>Steam Mill</i>				

TOTAL VALUE of LANDS & BUILDINGS.	VALUE of LAND.	VALUE of BUILDINGS.	NUMBER OF ACRES OF LANDS.	Val as fixed by the Co Board	REMARKS.
			PLOW. Meadow and PASTURE. WOOD.		
1815	1815		80 25 16 1/2	1815	1744 ✓
686	686		17 32	686	660 ✓
1060	1060		25 25	1060	1018 ✓
1050	1050		8 35 27	1050	1008 ✓
936	936		6 33 39	936	900 ✓
1680	1680		28 26 29	1680	1614 ✓
981	981		10 44 1/2	981	932 ✓
1200	1200		27 12 61	1200	1152 ✓
600	600		14 12 24	600	576 ✓
500	500		5 25 21	500	480 ✓
3077	3077	500	38 35 108	3439	3302 ✓
1500	1000	500	26 25 24	1500	1440 ✓
300	300		7 45	300	288 ✓
378	378		6 47 1/2	378	364 ✓
8	8			8	8
1600	700	900	12 4 24	1600	1536 ✓
1080	1080		20 40	1080	1038 ✓
980	980		140	980	942 ✓
1505	1505		12 24 179	1720	1662 ✓
162	162		4 6	162	156 ✓
3078	2578	500	18 153	3420	3294 ✓
1928	1920		60 60	1920	1844 ✓
1768	1768		20 20 181	1768	1700 ✓
616	616		77	616	592 ✓
81	81		4 5	81	78
1900	1900			800	768
30461	26161	4500	388 607 1186		

Corrected

Description and Value of Lands and Town Lots in *Allen* Township,

Union County, Ohio, as Returned by *J. Mitchell* Appraiser for 1859.

OWNERS' NAMES.	NO. OF ENTRY.	ORIGINAL QUANTITY.	ORIGINAL PROPRIETORS.	WATER COURSES.	No. of Lot.	No. of ACRES.	Value per ACRE. \$.	TOTAL VALUE of LANDS & BUILDINGS.	VALUE of LAND.	VALUE of BUILDINGS.	NUMBER OF ACRES OF LANDS.			Value as fixed by the Co. Board		REMARKS.
											PLOW.	Meadow and PASTURE.	WOOD.			
<i>Crary P. W. (his)</i>	<i>3333-3681</i>	<i>200</i>	<i>Sullivan & Maniold</i>	<i>Darby Creek</i>	<i>135</i>	<i>19</i>		<i>2375</i>	<i>1925</i>	<i>450</i>	<i>30</i>	<i>30</i>	<i>45</i>	<i>2500</i>	<i>2400</i>	
" "	<i>138</i>	<i>1200</i>	<i>Chas. Simms</i>	" "	<i>51</i>	<i>7</i>		<i>357</i>	<i>357</i>		<i>7</i>	<i>44</i>		<i>357</i>	<i>344</i>	
<i>Cochran D. N.</i>	<i>2875-2880</i>	<i>1800</i>	<i>Wallace</i>	" "	<i>71 1/4</i>	<i>9</i>		<i>571</i>	<i>571</i>			<i>10</i>	<i>61 1/4</i>	<i>571</i>	<i>548</i>	<i>correct</i>
<i>Carpenter</i>	<i>2180</i>	<i>800</i>	<i>J. M. Gage</i>	" "	<i>95</i>	<i>16</i>		<i>1520</i>	<i>1520</i>		<i>12</i>	<i>36</i>	<i>47</i>	<i>1520</i>	<i>1460</i>	
<i>Carpenter George</i>	<i>2875-2880</i>	<i>1800</i>	<i>Wallace</i>	" "	<i>77 1/4</i>	<i>15</i>		<i>1165</i>	<i>1165</i>		<i>38</i>	<i>39</i>		<i>1165</i>	<i>1120</i>	
<i>Charles G. W.</i>	<i>2579</i>	<i>1300</i>	<i>L. Sullivan</i>	" "	<i>63</i>	<i>63</i>	<i>16</i>	<i>1008</i>	<i>1008</i>		<i>32</i>	<i>31</i>		<i>1008</i>	<i>968</i>	
" "	"	"	"	"	<i>61</i>	<i>61</i>	<i>16</i>	<i>976</i>	<i>976</i>		<i>30</i>	<i>21</i>	<i>10</i>	<i>976</i>	<i>938</i>	
<i>Cod Moss</i>	<i>9796</i>	<i>200</i>	<i>Wm. Dun</i>	" "	<i>92</i>	<i>153</i>	<i>20</i>	<i>3060</i>	<i>2660</i>	<i>400</i>	<i>60</i>	<i>93</i>		<i>3366</i>	<i>3232</i>	
<i>Cochran James</i>	<i>8565</i>	<i>300</i>	<i>Walter Dun</i>	" "	<i>7</i>	<i>20</i>		<i>140</i>	<i>140</i>			<i>7</i>		<i>140</i>	<i>136</i>	
<i>Crowder Wm.</i>	<i>12308</i>	<i>1000</i>	<i>M. Vance</i>	" "	<i>60</i>	<i>8</i>		<i>480</i>	<i>480</i>		<i>8</i>	<i>10</i>	<i>42</i>	<i>480</i>	<i>462</i>	
<i>Clark Emanuel</i>	"	"	"	"	<i>60</i>	<i>7</i>		<i>420</i>	<i>420</i>		<i>4</i>		<i>56</i>	<i>420</i>	<i>404</i>	
<i>Craigill Chas</i>	<i>1533</i>	<i>500</i>	<i>Ho. Sears</i>	" "	<i>176</i>	<i>252</i>	<i>14</i>	<i>3528</i>	<i>3028</i>	<i>500</i>	<i>64</i>	<i>148</i>	<i>40</i>	<i>3780</i>	<i>3630</i>	<i>Corrected</i>
" "	"	"	"	"	<i>76</i>											
<i>Coe P. L.</i>	<i>2669</i>	<i>1000</i>	<i>Ho. Leptansue</i>	" "	<i>139</i>	<i>20</i>		<i>2780</i>	<i>2480</i>	<i>300</i>	<i>50</i>	<i>33</i>	<i>56</i>	<i>2919</i>	<i>2802</i>	
<i>Cone Jacob</i>	<i>158</i>	<i>1200</i>	<i>C. Simms</i>	" "	<i>149</i>	<i>11</i>		<i>1639</i>	<i>1639</i>		<i>40</i>	<i>14</i>	<i>95</i>	<i>1639</i>	<i>1564</i>	
" "	"	"	"	"	<i>5</i>	<i>12</i>		<i>60</i>	<i>60</i>		<i>5</i>			<i>60</i>	<i>58</i>	
<i>Cook Daniel</i>	<i>182</i>	<i>740</i>	<i>Henry Smith</i>	" "	<i>78</i>	<i>15</i>		<i>1170</i>	<i>1170</i>		<i>23</i>	<i>4</i>	<i>51</i>	<i>1170</i>	<i>1134</i>	
<i>Crary Barnet</i>	<i>3681</i>	<i>1000</i>	<i>L. Sullivan</i>	" "	<i>2</i>	<i>20</i>		<i>40</i>	<i>40</i>		<i>2</i>			<i>40</i>	<i>38</i>	
<i>Coe Philip</i>	<i>2979</i>	<i>1300</i>	" "	" "	<i>140</i>	<i>18</i>		<i>2520</i>	<i>2520</i>		<i>41</i>	<i>20</i>	<i>78</i>	<i>2520</i>	<i>2420</i>	
<i>Coe Mary</i>	"	"	" "	" "	<i>32</i>	<i>14</i>		<i>448</i>	<i>448</i>		<i>11</i>	<i>21</i>		<i>448</i>	<i>430</i>	
" "	"	"	" "	" "	<i>95</i>	<i>27</i>		<i>2565</i>	<i>1665</i>	<i>900</i>	<i>34</i>	<i>55</i>	<i>6</i>	<i>2755</i>	<i>2655</i>	
<i>Dunlap Robt.</i>	<i>4812</i>	<i>833 1/2</i>	<i>Ben. Boissea</i>	" "	<i>43</i>	<i>11</i>		<i>473</i>	<i>473</i>		<i>25</i>	<i>5</i>	<i>15</i>	<i>473</i>	<i>454</i>	
<i>Dunlap John</i>	<i>2981</i>	<i>1000</i>	<i>A. Carbaune</i>	" "	<i>121</i>	<i>15</i>		<i>1815</i>	<i>1515</i>	<i>300</i>	<i>36</i>	<i>36</i>	<i>48</i>	<i>1815</i>	<i>1744</i>	
<i>Dunlap Lydia</i>	<i>4938</i>	<i>500</i>	<i>Ho. Sears</i>	" "	<i>110</i>	<i>113</i>	<i>13</i>	<i>1469</i>	<i>1269</i>	<i>200</i>	<i>50</i>	<i>55</i>	<i>8</i>	<i>1469</i>	<i>1410</i>	
" "	"	"	"	"	<i>3</i>											
<i>Dun William</i>	<i>2983</i>	<i>1000</i>	<i>A. Carbaune</i>	" "	<i>177</i>	<i>15</i>		<i>2985</i>	<i>2985</i>		<i>50</i>	<i>50</i>	<i>99</i>	<i>2985</i>	<i>2864</i>	
<i>Dynes Providence</i>	"	"	" "	" "	<i>114</i>	<i>15</i>		<i>1710</i>	<i>1710</i>		<i>35</i>	<i>49</i>	<i>30</i>	<i>1710</i>	<i>1642</i>	
<i>Downs Isaac</i>	<i>1502</i>	<i>300</i>	<i>Jas. Dunny</i>	" "	<i>18</i>			<i>35274</i>	<i>32224</i>	<i>3050</i>	<i>800</i>	<i>772</i>	<i>8384</i>			<i>In the name of Marshal Gull</i>

Description and Value of Lands and Town Lots in *Allen* Township,

Union County, Ohio, as Returned by *Dixon Mitchell* Appraiser for 1859.

OWNERS' NAMES.	NO. OF ENTRY.	ORIGINAL QUANTITY.	ORIGINAL PROPRIETORS.	WATER COURSES.	No. of Lot.	No. of ACRES.	Value per ACRE. \$ C.	TOTAL VALUE			NUMBER OF ACRES OF LANDS.			Val. by Cor Bond	4 per cent. of	REMARKS.
								of LANDS & BUILDINGS.	of LAND.	of BUILDINGS.	PLOW.	Meadow and PASTURE.	WOOD.			
<i>Epps John</i>	<i>3681-3745</i>	<i>1600</i>	<i>Sullivan & Coleman</i>	<i>Dorby C.</i>	<i>100</i>		<i>15</i>	<i>1500</i>	<i>1500</i>		<i>35</i>	<i>10</i>	<i>55</i>	<i>1300</i>	<i>1248</i>	
<i>Olis Allen</i>	<i>3157</i>	<i>1000</i>	<i>Wm Carter</i>	" "	<i>1000</i>		<i>8</i>	<i>8000</i>	<i>8000</i>		<i>70</i>		<i>730</i>	<i>8000</i>	<i>7680</i>	
<i>Caton J. D. O.</i>	<i>2581</i>	"	<i>A. Sartorius</i>	" "	<i>35 1/2</i>		<i>15</i>	<i>597</i>	<i>597</i>		<i>14</i>	<i>25</i>		<i>597</i>	<i>574</i>	
<i>Caton Joshua</i>	<i>4812</i>	<i>833</i>	<i>Benj. Boistean</i>	" "	<i>3</i>		<i>33 1/2</i>	<i>100</i>	<i>100</i>		<i>3</i>			<i>100</i>	<i>96</i>	
<i>Epps Richard</i>	"	"	" "	" "	<i>80</i>		<i>10</i>	<i>800</i>	<i>800</i>		<i>27</i>	<i>5</i>	<i>51</i>	<i>800</i>	<i>768</i>	<i>1000</i>
<i>Epps Willis</i>	"	"	" "	" "	<i>20</i>		<i>11</i>	<i>200</i>	<i>200</i>		<i>12</i>		<i>8</i>	<i>200</i>	<i>192</i>	
<i>Finley James</i>	<i>2579</i>	<i>1300</i>	<i>S. Sullivan</i>	" "	<i>230</i>	<i>20</i>		<i>4660</i>	<i>3700</i>	<i>900</i>	<i>79</i>	<i>170</i>	<i>121</i>	<i>5175</i>	<i>4968</i>	
<i>Finley Joseph</i>	"	"	" "	" "	<i>77</i>	<i>13</i>		<i>1000</i>	<i>1000</i>		<i>25</i>		<i>52</i>	<i>1000</i>	<i>960</i>	<i>+40</i>
<i>Ford G. W.</i>	<i>158</i>	<i>1200</i>	<i>C. Simms</i>	" "	<i>51</i>		<i>10</i>	<i>510</i>	<i>500</i>		<i>25</i>	<i>8</i>	<i>28</i>	<i>510</i>	<i>490</i>	
<i>Fell Joseph</i>	<i>1502</i>	<i>300</i>	<i>Jas. Dunning</i>	" "	<i>92</i>		<i>20</i>	<i>1840</i>	<i>1340</i>	<i>500</i>	<i>47</i>	<i>15</i>	<i>30</i>	<i>1840</i>	<i>1778</i>	
<i>Fell Marshall</i>	"	"	" "	" "	<i>18</i>		<i>30</i>	<i>540</i>	<i>200</i>	<i>340</i>	<i>14</i>		<i>4</i>	<i>540</i>	<i>520</i>	
<i>Feltner David</i>	<i>3152</i>	<i>200</i>	<i>Wm. Carter</i>	" "	<i>57</i>		<i>7</i>	<i>357</i>	<i>357</i>		<i>19</i>		<i>36</i>	<i>357</i>	<i>344</i>	
<i>Foster John M.</i>	<i>12308</i>	<i>1000</i>	<i>Mary Vance</i>	" "	<i>35 1/2</i>		<i>17</i>	<i>250</i>	<i>250</i>			<i>5 1/2</i>		<i>250</i>	<i>240</i>	
" " "	"	"	" "	" "	<i>13</i>		<i>7</i>	<i>115</i>	<i>115</i>				<i>15</i>	<i>105</i>	<i>100</i>	
" " "	<i>4533</i>	<i>500</i>	<i>The Sears</i>	" "	<i>23</i>		<i>14</i>	<i>312</i>	<i>312</i>		<i>6</i>	<i>17</i>		<i>302</i>	<i>290</i>	
<i>Frost Lydia</i>	<i>4812</i>	<i>833</i>	<i>Benj. Boistean</i>	" "	<i>2</i>		<i>40</i>	<i>80</i>	<i>80</i>		<i>2</i>			<i>80</i>	<i>78</i>	
<i>Gabriel John & Mrs.</i>	<i>2779</i>	<i>1300</i>	<i>S. Sullivan</i>	" "	<i>260</i>		<i>22</i>	<i>5720</i>	<i>5720</i>		<i>76</i>	<i>184</i>	<i>114</i>	<i>5200</i>	<i>4992</i>	
<i>Gibson Mrs.</i>	<i>12308</i>	<i>1000</i>	<i>Mary Vance</i>	" "	<i>119</i>		<i>7</i>	<i>833</i>	<i>833</i>		<i>16</i>	<i>4</i>	<i>199</i>	<i>833</i>	<i>800</i>	
<i>Griswold B. H. B.</i>	<i>2779</i>	<i>1300</i>	<i>S. Sullivan</i>	" "	<i>84</i>		<i>22</i>	<i>1848</i>	<i>1448</i>	<i>400</i>	<i>34</i>	<i>34</i>	<i>76</i>	<i>1848</i>	<i>1774</i>	
<i>Grubb William</i>	<i>4606</i>	<i>320</i>	<i>John Cutler</i>	" "	<i>3 1/4</i>		<i>31</i>	<i>101</i>	<i>101</i>				<i>3 1/4</i>	<i>101</i>	<i>96</i>	
" " "	"	"	" "	" "	<i>3 1/4</i>											
<i>Grubbs Christopher</i>	<i>158</i>	<i>1200</i>	<i>C. Sims</i>	" "	<i>50</i>		<i>9</i>	<i>450</i>	<i>450</i>		<i>5</i>	<i>8</i>	<i>37</i>			<i>Is in the name of John Sullivan</i>
								<i>29533</i>	<i>27393</i>	<i>2140</i>	<i>509</i>	<i>411</i>	<i>1296</i>			

Description and Value of Lands and Town Lots in *Allen* Township,

Union County, Ohio, as Returned by *C. Mitchell* Appraiser for 1859.

OWNERS' NAMES.	NO. OF ENTRY.	ORIGINAL QUANTITY.	ORIGINAL PROPRIETORS.	WATER COURSES.	No. of Lots.	No. of ACRES.	Value per ACRE. \$ C.	TOTAL VALUE of LANDS & BUILDINGS.	VALUE of LAND.	VALUE of BUILDINGS.	NUMBER OF ACRES OF LANDS.			Value by co Bids.	4 per cent off.	REMARKS.		
											PLOW.	Meadow and PASTURE.	WOOD.					
Hollycrop Albert	102	740	H. W. Liting	Darby c	8	11		88	88			8	88	86	✓			
Hollycrop Daniel	"	"	" "	" "	28	16		448	448			10	18	448	430	✓		
Hollycrop Mrs.	158	1200	C. Linnis	" "	57	10		570	570			40	3	14	570	548	✓	
Hollycrop John	"	"	" "	" "	25	12		300	300			18	3	4	300	288	✓	
Hollycrop Mrs. J.	2833	1000	P. M. Mifflin	" "	100	13		1300	1300			38	8	54	1300	1248	✓	
Hollycrop Abraham	"	"	" "	" "	146	14		2044	1554	150		34	16	96	2044	1964	✓	
" "	3681-3747	1600	Sullivan & Co. man	" "	50	15		750	750			20	30	750	720	✓		
Haines Mrs.	3681	1000	L. Sullivan	" "	66 2/3	20		1320	920	400		30	15	2 1/2	1453	1396	✓	
" "	12308	"	A. Rice	" "	127 2/3	8		894	894					127 2/3	894	864	✓	
Hoffman Kendall	3749	600	J. Co. man	" "	30	8		400	400			16		34	400	384	✓	
Hoffman Charles	4880	250	John Haines	" "	30	14		421	421			7	7	16	420	404	✓	
" "	"	"	" "	" "	20													
Hoff Martha	2583	1000	A. Garbansue	" "	48 1/4	15		724	720			20	5	25 1/4	724	696	✓	
Hutchinson John	1502	300	Jas. Downey	" "	33	12		396	396			5		28	396	380	✓	
Harris David	2661	1000	H. Stephens	" "	33	18		990	990			40	15	990	950	✓		
" Daniel																		
Keale Jonas	2875	1000	Saml. Wallace	" "	102	16		1632	1631			35	67	1632	1568	✓		
Haines S. & S.	3681	"	L. Sullivan	" "	10 2/3													
" " "	12308	260	Jas. Galloway	" "	35 1/2													In the Vance Survey
Haines Joel	15309	260	Jas. Galloway	" "	80	7		560	561			10		70	560	538	✓	
" "	158	1200	C. Linnis	" "	9 3/4	8		80	884					10	80	78	✓	
Haines Levi	3681	1000	L. Sullivan	" "	16 2/3	20		334	334			6	4	6 2/3	334	322 1/4	344	
" "	12008	1000	M. Vance	" "	35 1/2	35 1/2	10	357	357			10		20 1/2	357	344	✓	Corrected
Hamminger Valentine	15305	260	J. Galloway	" "	80	7		560	560					80	560	538	✓	
Hammitt C. W.	2875	1000	S. Wallace	" "	100	10		1100	1100			40	30	30	1100	1066	✓	
Irwin Lecky	158	1200	C. Linnis	" "	20	8		160	160			8	4	8	160	154	✓	
Inskip Mrs. J. S.	3681	1000	L. Sullivan	" "	120	16		1920	1570	530		22	18	86	2170	2362	✓	
Inskip Mrs. J. S.	"	"	" "	" "	100	20		2000	1700	500		50	36	14	2100	2016	✓	
								19347	17941	1400	424	304	764 1/2					

Description and Value of Lands and Town Lots in *Allen* Township.

Union County, Ohio, as Returned by *J. Mitchell* Appraiser for 1859.

OWNERS' NAMES.	NO. OF ENTRY.	ORIGINAL QUANTITY.	ORIGINAL PROPRIETORS.	WATER COURSES.	No. of Lot.	No. of ACRES.	Value per A.C.R.	TOTAL VALUE	VALUE	VALUE	NUMBER OF ACRES OF LANDS.			Val fixed by the Co. Book of Squares	REMARKS.
								of LANDS & BUILDINGS.	of LAND.	of BUILDINGS.	PLOW.	Meadow and PASTURE.	WOOD.		
Johnson Benj.	158	1200	C. Simms	Doyle	78	9	702	702			18		60	702	674 ✓
Johnson Joseph	7822	3337	A. Walk	"	109	21	2150	1680	500		75	34		2398	2302 ✓
" "	7796	200	Wm. Dun	"	6	25	900	150	8850		2			1000	8640 ✓
" "	2669	1000	W. Thompson	"	127	20	2540	2540			45	50	32	2540	2440 ✓
Wright John	3681	1000	J. Sullivan	"	102	17	1734	1234	500		27	42	33	2142	2058 ✓
Conrad James	158	1300	C. Simms	"	58	12	696	546	150		20	10	25	696	668 ✓
Knipper Jonathan	158	1200	C. Simms	"	104 1/2	7	731	731			18		82	731	702 ✓
" "	3681	1000	J. Sullivan	"	100	12	1200	1200			35		15	1700	1632 ✓
" "	3163	800	N. Stephens	"	50	20	1000	700	300		20	30		1000	960 ✓
Lyan Sullivan & Co	158	1200	C. Simms	"	50	10	500	500			12		38	500	480 ✓
Leonard Abraham	3742	2000	James Wilson	"	146	8	1168	1022			6	3	137	1168	1122 ✓
Leonard James & Co	2583	1000	A. Carlsrud	"	72	11	792	792			20	42	10	792	760 ✓
Hapic Henry	7022	866	Wm. Haggard	"	750	50	5625	5625					750	5625	5400 ✓
" "	14602	40	Henry Massie	"	40	7	280	280					40	280	270 ✓
Morse Chancy	3681	1000	J. Sullivan	"	154	20	3000	2880	200		22	20	30	3154	3028 ✓
Morse Charles	3479	600	J. Coleman	"	100	8	700	700					100	700	672 ✓
" "	3163	1000	N. Stephens	"	20	14	280	280			4	4	16	280	270 ✓
Miligan Saml.	2833	"	P. Manifold	"	78	15	1504	1504			24	14	40	1504	1440 ✓
Mitchell Dixon	8365	500	Dun & Haines	"	56	20	1120	900	220		46	10		900	864 ✓
" "	2669	1000	N. Stephens	"	54	30	1620	1120	500		22	32		1620	1556 ✓
" "	7822	3337	A. Walk	"	30	20	1000	1000			5	45		1000	960 ✓
Morrill Saml. P.	2583	1000	A. Carlsrud	"	62	20	1240	940	300		28	28	11	1240	1190 ✓
Morse Reuben	158	1200	C. Simms	"	60	11	660				25	35		660	634 ✓
Marsh Saml.	2580	800	J. M. Gregory	"	82 1/2	20	1650	1050	600				82 1/2	1650	1584 ✓
" "	"	"	"	"	12	15	180	180					12	180	174 ✓
								41102	29076	12120	544	484	1497 1/2		

Description and Value of Lands and Town Lots in *Allen* Township,

Union County, Ohio, as Returned by

Appraiser for 1859.

OWNERS' NAMES.	NO. OF ENTRY.	ORIGINAL QUANTITY.	ORIGINAL PROPRIETORS.	WATER COURSES.	No. of Lot.	No. of ACRES.	Value per A.C.R.E.		TOTAL VALUE of LANDS & BUILDINGS.	VALUE of LAND.	VALUE of BUILDINGS.	NUMBER OF ACRES OF LANDS.			L. per out	REMARKS.	
							\$.	C.				PLOW.	Meadow and PASTURE.	WOOD.			
Martin Erasmus	4812	833	Benj' Boiceau	Darby C	117	12			1404	1404		40	18	59	1404	1348 ✓	
" "	3241	200	C. Harrison	" "	100	11			1100	1100		20	5	75	1100	1056 ✓	
" "	158	1200	C. Simms	" "	197 1/2	7			1384	1384		25	8	164	1384	1330 ✓	
McKiny Isaac	2833	1000	P. Manifold	" "	100	20			2000	1500	500	50	18	32	2000	1920 ✓	
McClard Matthew	2875	"	Sam Wallace	" "	341 1/2	8			2732	2732					2732	2624 ✓	70 ✓
Moston W. W.	5740-6255	480	Barly S. Callaway	" "	100	113	15		1725	1575	150	50	65		1725	1656	Corrected
" "	2781	1000	A. Carbaum	" "	100												
Patrick William	12081-12744	82	Sam & Clarke	" "	17	20			340	340		3	14		340	326 ✓	
Patrick Isaac	12308	1000	M. Vance	" "	45	8			360	360		10		35	360	346 ✓	
Palmer Jas H.	3741	1000	James Wilson	" "	100	8			800	800		20	5	75	800	768 ✓	
Poland Roger	37423	200	Jas Wilson	" "	53 1/2	12			643	643		11	42		643	618 ✓	
" "	2780	800	J. M. Gregory	" "	57	12			684	684		10	10	37	684	658 ✓	
" "	2875	1000	Sam Wallace	" "	100	8			800	800		13		37	800	760 ✓	
Poland James	2780	800	J. M. Gregory	" "	57	15			1780	1580	200	20	29	50	1780	1750 ✓	
" "	2781	1000	A. Carbaum	" "	58	12			696	696		12	12	34	696	668 ✓	
" "	7022	866	Nico Haysell	" "	176 1/2	7	250		1470	1470		20		176 1/2	1470	1412 ✓	
Reaver John Jr	2983	1000	A. Carbaum	" "	100												
Reaver John Jr	"	"	"	"	50	155	12		1860	1860		30	65	60	1860	1780 ✓	Corrected
" "	3152	200	Tom Carter	" "	101	8			808	808				101	808	776 ✓	
" "	6255	120	Zadao Barly	" "	56	10			560	560		15	41		560	538 ✓	
" "	2983	1000	A. Carbaum	" "	100					700							
" "	3657	100	Geo Mc Miller	" "	100	7			700	700		4	30	66	700	672 ✓	
Poland Samuel	2780	800	J. M. Gregory	" "	57	15			1455	1255	200	20	33	44	1455	1398 ✓	
Poland John	2781	1000	A. Carbaum	" "	127	14			1806	1806		28	42	59	1806	1734 ✓	
Pearl Frank	"	"	"	"	247 1/2	12			2970	2770	200	35	24	68 1/2	3711	3564 ✓	
Painter Veriah	2875-2780	1800	Wallace & Gregory	" "	165	18			2970	2670	300	70	41	55	2970	2852 ✓	
Poling H & J.	4812	833	Ben Boiceau	" "	212	12			2544	2544		36	70	106	2544	2700 ✓	
Poling Henry	2781	1000	A. Carbaum	" "	6	9			54	54				6	54	52 ✓	
Poling James	"	"	"	"	58	15			870	870		15	43	100	870	836 ✓	
Poland R. S. Joseph	2875	1000	Sam Wallace	" "	110 1/2	11			1210	1210		40	10	60 1/2	1210	1162 ✓	
Pyers Martin			Keane & Bone														
									55725	34163	1550	597	624	1560			

109,28

847

Corrected

Corrected

2853

Description and Value of Lands and Town Lots in *Allen* Township,

Union County, Ohio, as Returned by *J. M. Tetrell* Appraiser for 1859.

OWNERS NAMES.	NO. OF ENTRY.	ORIGINAL QUANTITY.	ORIGINAL PROPRIETORS.	WATER COURSES.	No. of ACRES.	Value per A.C.R.E. S. C.
Woop Samuel H.	4610	481	P. Manifold	Darby Cr.	311	8
Woop John M. (heir)	"	"	"	"	90	15
Robinson Jas. W.	2581	1000	A. T. Tabor	"	30	8
Woop Samuel	12308	1000	Mary Tabor	"	119	7
Robinson William	158	1200	C. Linn	"	50	.7
Roberts Thomas	4812	833	B. Bissau	"	10	11
Spain Joseph	4812	833	Benj. Boissau	"	100	10
Spain Abraham	"	"	"	"	113	10
Spain Willis	"	"	"	"	233	8
Spain David W.	3681	1000	J. Sullivan	"	28	12
Spain " "	"	"	"	"	15	12
Spain Levi E.	"	"	"	"	38	12
Spain A. W.	"	"	"	"	31	45 13
" " "	"	"	"	"	14	
Spain Clement	3745	600	J. Coleman	"	52	12
"	3681	1000	J. Sullivan	"	38	12
Spain Paschal	2581	1000	A. T. Tabor	"	131	165 14
Stirling & Hinky	"	"	"	"	34	
" " "	"	"	"	"	80	10
Sullivan Lucas (heir)	3241	200	O. Harrison	"	90	10
Sprague N. W.	2558		John Heffner	"	100	8
Stillings Thomas	2583	1000	A. T. Tabor	"	87	19
" " "	"	"	"	"	50	12
" " "	2575-2583	2300	Sullivan & Tabor	"	123 1/2	15
" " "	"	"	"	"	27 1/2	45
Stillings Mrs. W. H.	2583	1000	A. T. Tabor	"	100	14
" " "	"	"	"	"	43 3/4	8

TOTAL VALUE of LANDS & BUILDINGS.	VALUE of LAND.	VALUE of BUILDINGS.	NUMBER OF ACRES OF LANDS.			REMARKS.
			PLOW.	PASTURE.	WOOD.	
2488	2488			311		2488 2390 ✓
1350	1350		55	59		1350 1296 ✓
160	160			20		160 154 ✓
833	833		7	112		833 800 ✓
343	343		12	37		343 330 ✓
440	440		19	4	21	440 422 ✓
1000	1000		17	16	67	1000 960 ✓
1130	1130		31	10	73	1130 1086 ✓
1864	1864			30	213	1864 1790 ✓
336	336		12	13	3	336 324 ✓
170	170		10		5	170 164 ✓
456	456		15	5	20	456 438 ✓
585	585		19	14	12	585 562 ✓
624	624		11	22	19	624 600 ✓
456	456		12	6	20	456 438 ✓
2310	2310		70	25	36	2310 2218 ✓
272	272					272 262 ✓
800	800			80		800 768 ✓
900	900			90		900 864 ✓
800	800			100		800 768 ✓
1653	1253	400	23	45	16	1740 1672 ✓
600	600			50		600 576 ✓
1882	1882		51	11	64	1882 1808 ✓
1215	1215		9	11 1/2	8	1050 1008 ✓
1400	1400		23	37	40	1400 1344 ✓
351	351		22	37	43	351 338 ✓
24156	23715	400	388	602	1435	

Connected

262 Connected



Description and Value of Lands and Town Lots in *Allen* Township,

Union County, Ohio, as Returned by

Appraiser for 1859.

OWNERS' NAMES.	NO. OF ENTRY.	ORIGINAL QUANTITY.	ORIGINAL PROPRIETORS.	WATER COURSES.	No. of Tracts	No. of ACRES.	Value per ACRE.	TOTAL VALUE of LANDS & BUILDINGS.	VALUE of LAND.	VALUE of BUILDINGS.	NUMBER OF ACRES OF LANDS.			REMARKS.		
											PLOW.	Meadow and PASTURE.	WOOD.			
Stillings James	2783	1000	A Tarbourn	Darby C	143	19	2717	2317	400	121	22	2962	2748	✓		
"	2777	1300	L Sullivan	"	6	15	90	90		6		90	88	✓		
"	2875	1000	Sam Wallace	"	6 1/2	12	765	765		4	3	57 1/2	768	738	✓	
Stokes John	4606	320	John Gritten	"	4 1/2	14	626	626		15	19 1/4	626	600	✓		
Starb Philip	4812	833	Ben' Boissau	"	138	8	1104	1104		12	5	121	1104	1060	✓	
Stewart James	5746-6275	480	Bailey & Galloway	"	153	15	2295	2295		35	15	103	2295	2204	✓	
Spain Robert	3752	100	Geo Castura	"	100	10	1000	1000		25	10	65	1000	960	✓	
Spain Thomas	1502	300	Gas Senn	"	35	12	660	660		15	7	33	660	634	✓	
Sears John	12081-12744	82	Dun & Clark	"	5	12	60	60		5		60	58	✓		
Starling Tom	3156	200	W. Baumgartner	"	209	8	1672	1672				208	1672	1606	✓	
"	2875	1000	Lambert	"	61	8	552	552				67	552	530	✓	
"	3748	200	L Sullivan	"	110	8	880	880				110	880	846	✓	
State of Ohio	2833	1000	P. Manifold	"	1 1/2	20	27	27				27	26	✓		
Statten Mary	3747	600	J. Coleman	"	50	8	400	400				18	22	400	384	✓
Sharp Andrew		steam	Mill	"			4000	4000	4000			4000	3840		not 4000. should be 4000 ✓	
Thomas Gray	2981	1000	A Tarbourn	Darby C	123	9	1107	1107		42	5	76	1107	1064	✓	
Thomas Corbuzo	15307	260	J. Galloway	"	50	7	350	350				51	350	336	✓	
Taylor Benj	3748	200	L Sullivan	"	100	10	1000	1000		25	8	67	1000	960	✓	
Thompson John G	12308	1000	Mary Vance	"	119	7	833	833		20		99	833	800	✓	
Tring Alexander	15307	260	J. Galloway	"	50	7	350	350				50	350	336	✓	
								20491	16091	4400	345	94	1071			

Description and Value of Lands and Town Lots in *Allen* Township,

Union County, Ohio, as Returned by

Appraiser for 1859.

OWNERS' NAMES.	NO. OF ENTRY.	ORIGINAL QUANTITY.	ORIGINAL PROPRIETORS.	WATER COURSES.	No. of lots.	No. of ACRES.	Value per A.C.R.E. \$.	TOTAL VALUE of LANDS & BUILDINGS.	VALUE of LAND.	VALUE of BUILDINGS.	NUMBER OF ACRES OF LANDS.			L/Per cent	REMARKS.
											PLOW.	PASTURE.	WOOD.		
Williams Amos (wid)	2875	1000	Sam Wallace	Darby C											
" "	2780	800	J. M. Gregory	" "											
" "	2775	1300	L. Sullivant	" "	204 1/2	16		3264	5264		31	174		3264	3134 ✓
Wood Luther	2669	1000	R. Stephenson	" "	115	20		2300	1700	600	40	40	35	2530	2430 ✓
Wilber Christopher	2775	1300	L. Sullivant	" "	135	15		2085	1785	2500	22	25	92	2085	2002 ✓
Wilber James	2780	800	J. M. Gregory	" "	176	17		3332	2832	400	44	27	125	3332	3200 ✓
Wilson Andrew	12308	1000	Mary Vance	" "	115	8		360	360		12		35	360	346 ✓
Wapan Mains	15036	15	Henry Makie	" "	15	7		105	105				15	105	100 ✓
" "	3745	600	J. Coleman	" "	130	8		1041	1040		50		100	1040	1000 ✓
Woods M. L.	2669	1000	R. Stephenson	" "	65	18		1224	1124		15	55		1360	1306 ✓
" " "	2776	200	W. Dunn	" "	68	20		1500	1100	200	32	33		1300	1248 ✓
Webb William	2776	200	Wm Dunn	" "	14	18		252	252		5	9		252	242 ✓
" "	2775	1300	L. Sullivant	" "	115	20		2300	2000	3000	58	35	42	2415	2318 ✓
Wilson Hugh	158	1200	C. Sims	" "	35	8		304	304		6	5	29	304	292 ✓
Wells Edith & Poland	2781	1000	A. Sasthaus	" "	36	78	10	780	780		6	25	47	780	750 ✓
" " " "	"	"	"	"	"	"	"	"	"	"	"	"	"	"	"
Waddle Samuel	4880	250	John Hays	" "	5 1/2	15		87	87		54			87	84 ✓
" "	3745	600	J. Coleman	" "	15	14		210	210		12		3	210	202 ✓
" "	158	1200	C. Sims	" "	53	12		636	636		21		33	636	612 ✓
Wilson Charles	158	1200	C. Sims	" "		3 3/8		100	1100					100	96 ✓
								19679	17779	1500	318	424	502		

Corrected

Description and Value of Lands and Town Lots in Township,

Union County, Ohio, as Returned by

Appraiser for 1859.

OWNERS NAMES.

NO. OF ENTRY.

ORIGINAL QUANTITY.

ORIGINAL PROPRIETORS.

WATER COURSES.

No. of Lot.

No. of ACRES.

Value per ACRE. \$ C.

TOTAL VALUE of LANDS & BUILDINGS.

VALUE of LAND.

VALUE of BUILDINGS.

NUMBER OF ACRES OF LANDS. PLOW. MEADOW and PASTURE. WOOD.

REMARKS.



Description and Value of Lands and Town Lots in

Township,

Union County, Ohio, as Returned by

Appraiser for 1859.

OWNERS NAMES.

NO. OF ENTRY.

ORIGINAL QUANTITY.

ORIGINAL PROPRIETORS.

WATER COURSES.

No. of Lot.

No. of ACRES.

Value per A.C.T. C.

TOTAL VALUE of LANDS & BUILDINGS.

VALUE of LAND.

VALUE of BUILDINGS.

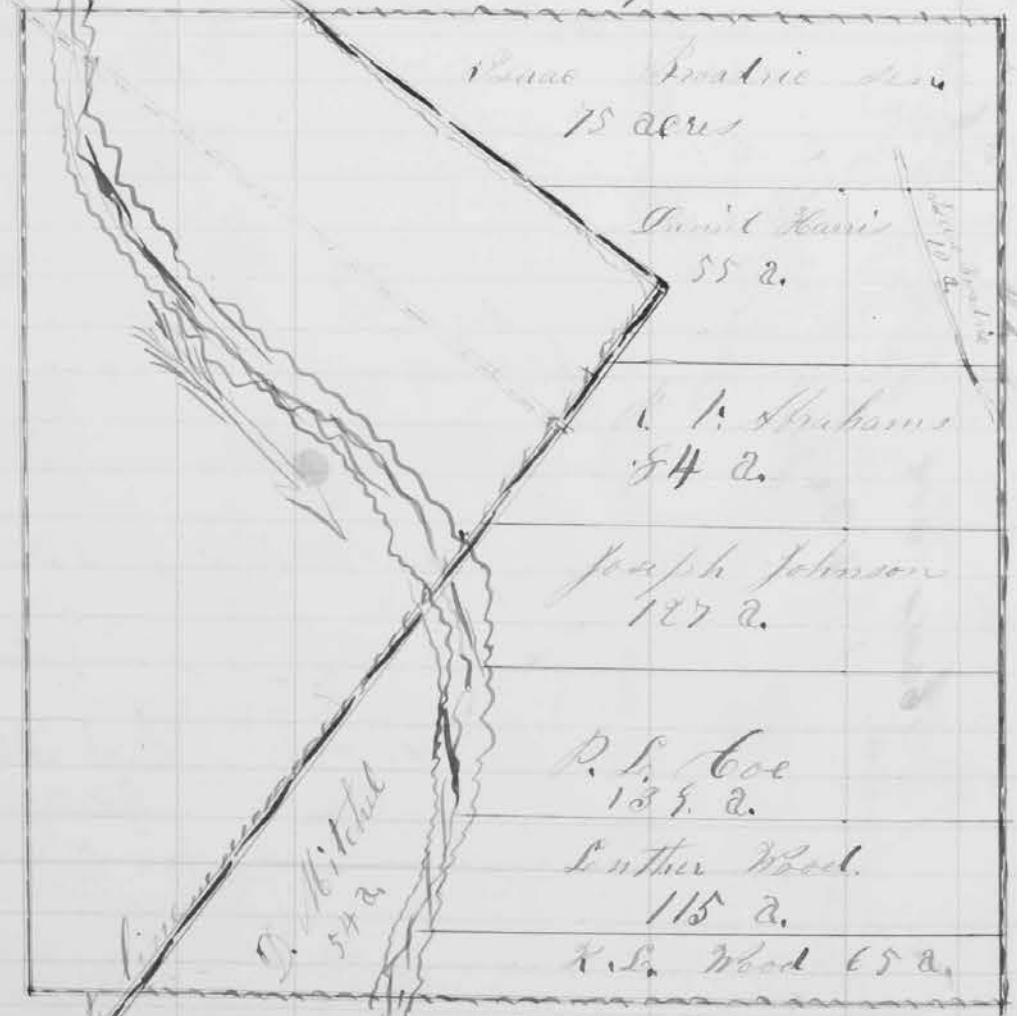
NUMBER OF ACRES OF LANDS. PLOW. MEADOW and PASTURE. WOOD.

REMARKS.

West

Wm. No. 3669.

Richard W. Johnson 1000 Acres



North

Wm. 1833

Peter Mansfield 1000 Acres



South

East

Description and Value of Lands and Town Lots in

Township,

Union County, Ohio, as Returned by

Appraiser for 1859.

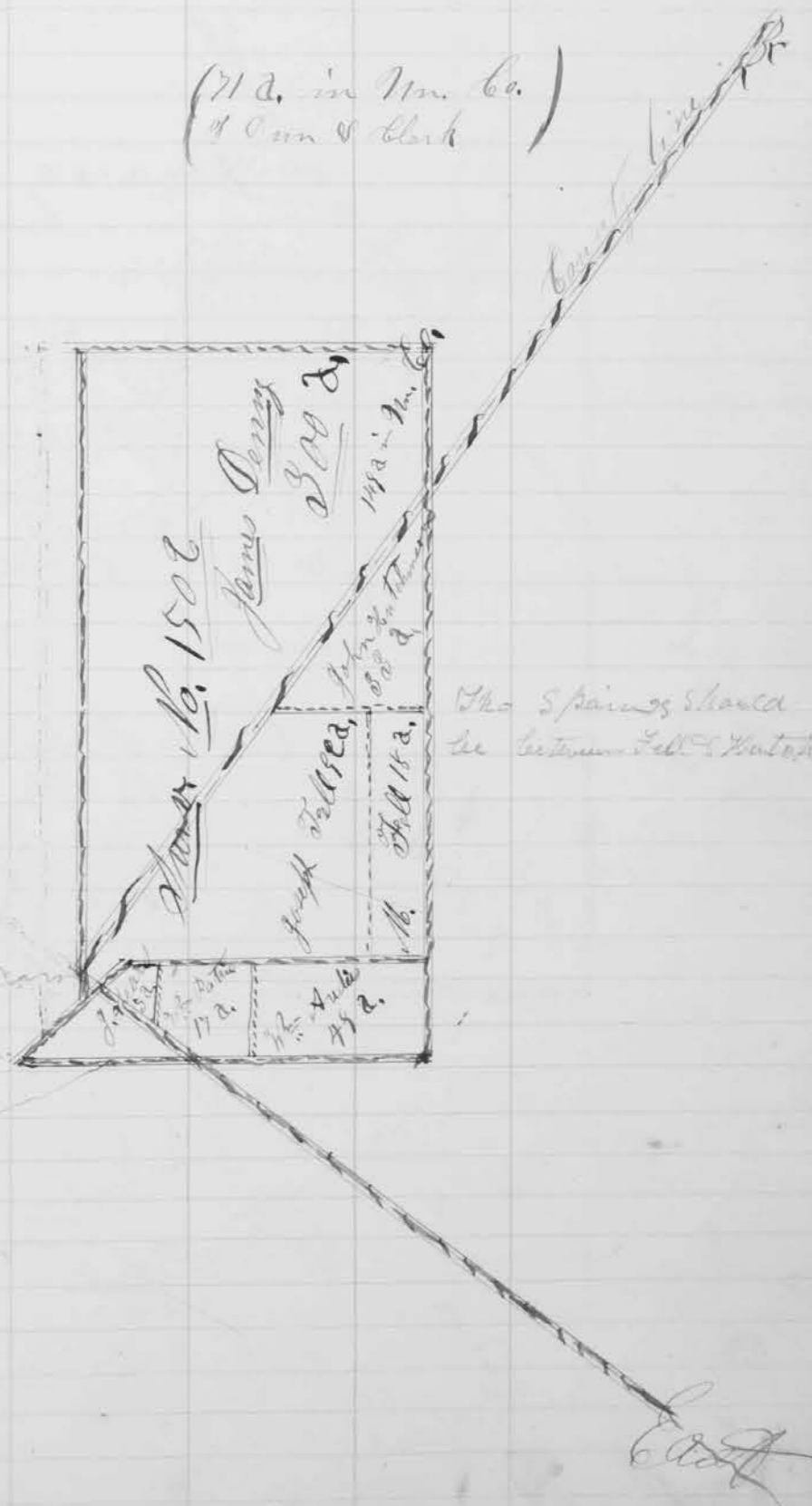
OWNERS' NAMES.	NO. OF ENTRY.	ORIGINAL QUANTITY.	ORIGINAL PROPRIETORS.	WATER COURSES.	No. of Lot.	No. of ACRES.	Value per A.C.R.E. \$ C.	TOTAL VALUE	VALUE	VALUE	NUMBER OF ACRES OF LANDS.			REMARKS.
								of LANDS & BUILDINGS.	of LAND.	of BUILDINGS.	P.L.O.W.	Meadow and PASTURE.	W.O.O.	

No. 1502, James Denny 300 Acres
 S. No. 12081 & 12744 Dun & Clark 82 a

(71 a. in N. Co.)
 4 Dun & Clark



Nos. 12081 & 12744
 Dun & Clark 82 a.
 71 a. in N. Co.



Description and Value of Lands and Town Lots in

Township,

Union County, Ohio, as Returned by

Appraiser for 1859.

OWNERS' NAMES.

NO. OF ENTRY.

ORIGINAL QUANTITY.

ORIGINAL PROPRIETORS.

WATER COURSES.

No. of Lot.

No. of ACRES.

Value per ACRE.

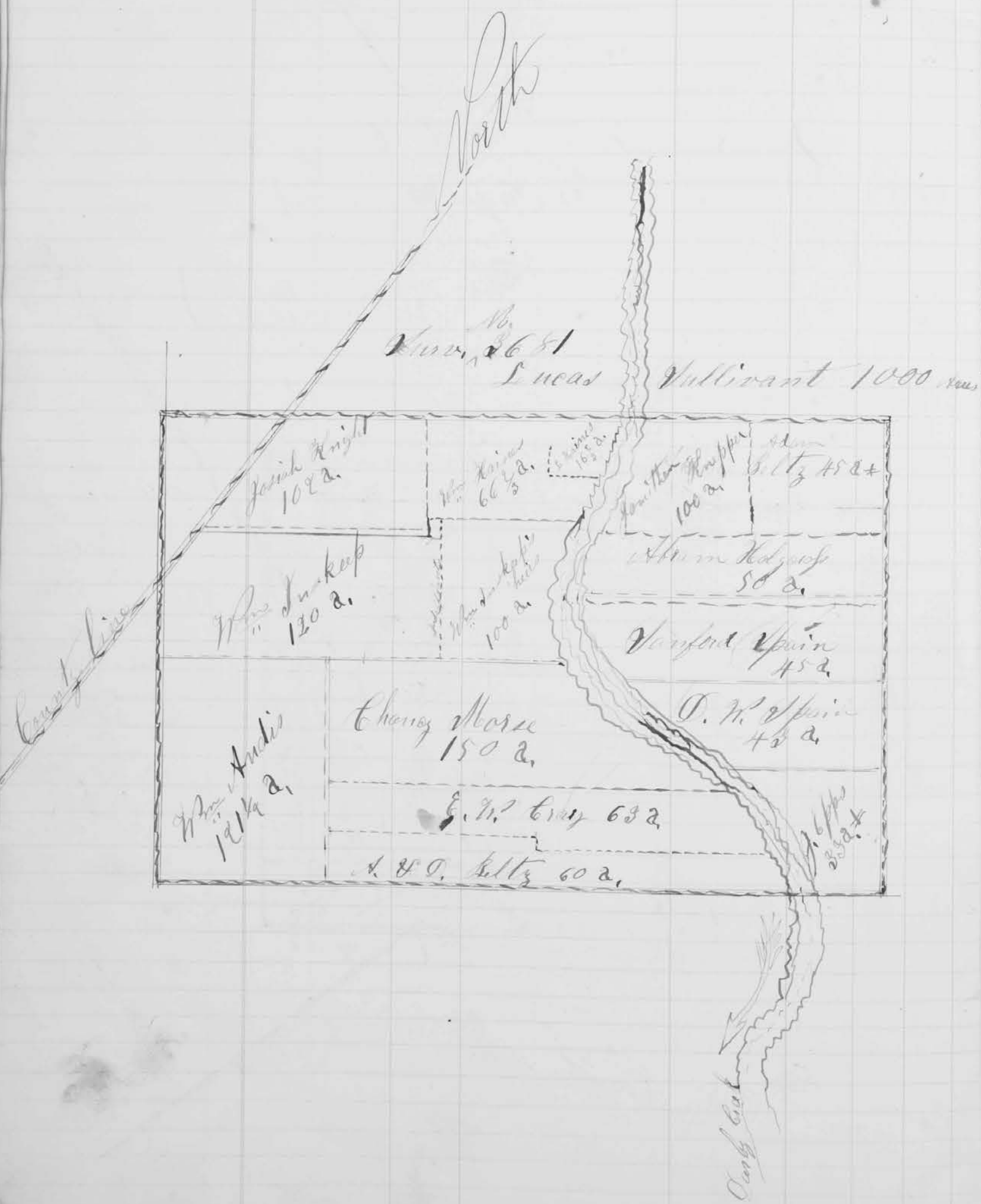
TOTAL VALUE of LANDS & BUILDINGS.

VALUE of LAND.

VALUE of BUILDINGS.

NUMBER OF ACRES OF LANDS. Meadow and PASTURE. WOOD.

REMARKS.



W.P.

Shury, No. 3747.
 James Coleman 600 acres

Saml. Seltz 152 a.	Wm. Knapp 50 a.
Saml. Seltz 52 a.	Mary Knapp 50 a.
Wm. Knapp 52 a.	J. C. Baker 140 a.
Wm. Knapp 38 a. +	Charles Morse 100 a.
Wm. Knapp 38 a. +	Wm. Knapp 130 a.
Wm. Knapp 67 a. +	

E.

Description and Value of Lands and Town Lots in

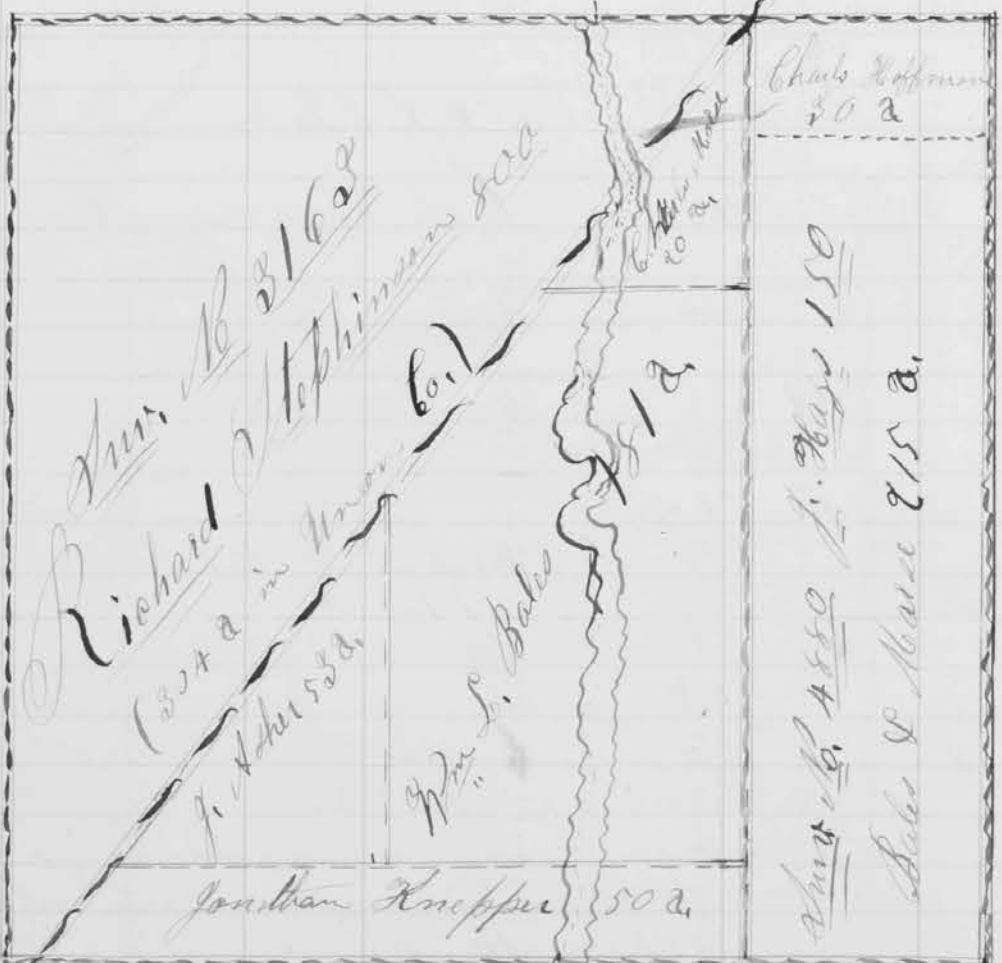
Township,

Union County, Ohio, as Returned by

Appraiser for 1859.

OWNERS' NAMES.	NO. OF ENTRY.	ORIGINAL QUANTITY.	ORIGINAL PROPRIETORS.	WATER COURSES.	No. of Lot.	No. of ACRES.	Value per ACRE.		TOTAL VALUE of LANDS & BUILDINGS.	VALUE of LAND.	VALUE of BUILDINGS.	NUMBER OF ACRES OF LANDS.			REMARKS.
							§	¢				PLOW.	Meadow and PASTURE.	WOOD.	

Div. No. 3163 & 4550
Stephens & Hays



Div. No. 4069 & 4553
Gitten & Hays



East line

East

Description and Value of Lands and Town Lots in

Township,

Union County, Ohio, as Returned by

Appraiser for 1859.

OWNERS' NAMES. NO. OF ENTRY. ORIGINAL QUANTITY. ORIGINAL PROPRIETORS. WATER COURSES. No. of Lot. No. of ACRES. Value per A C R. \$ C.

TOTAL VALUE of LANDS & BUILDINGS. VALUE of LAND. VALUE of BUILDINGS. NUMBER OF ACRES OF LANDS. Meadow and PASTURE. WOOD. REMARKS.

Surv. No 158
 Charles Simmons 1200 acres
 West Township line



Surv. No. 12308
 (10208)
 Mary Vance 1000 acres
 West



East

Description and Value of Lands and Town Lots in

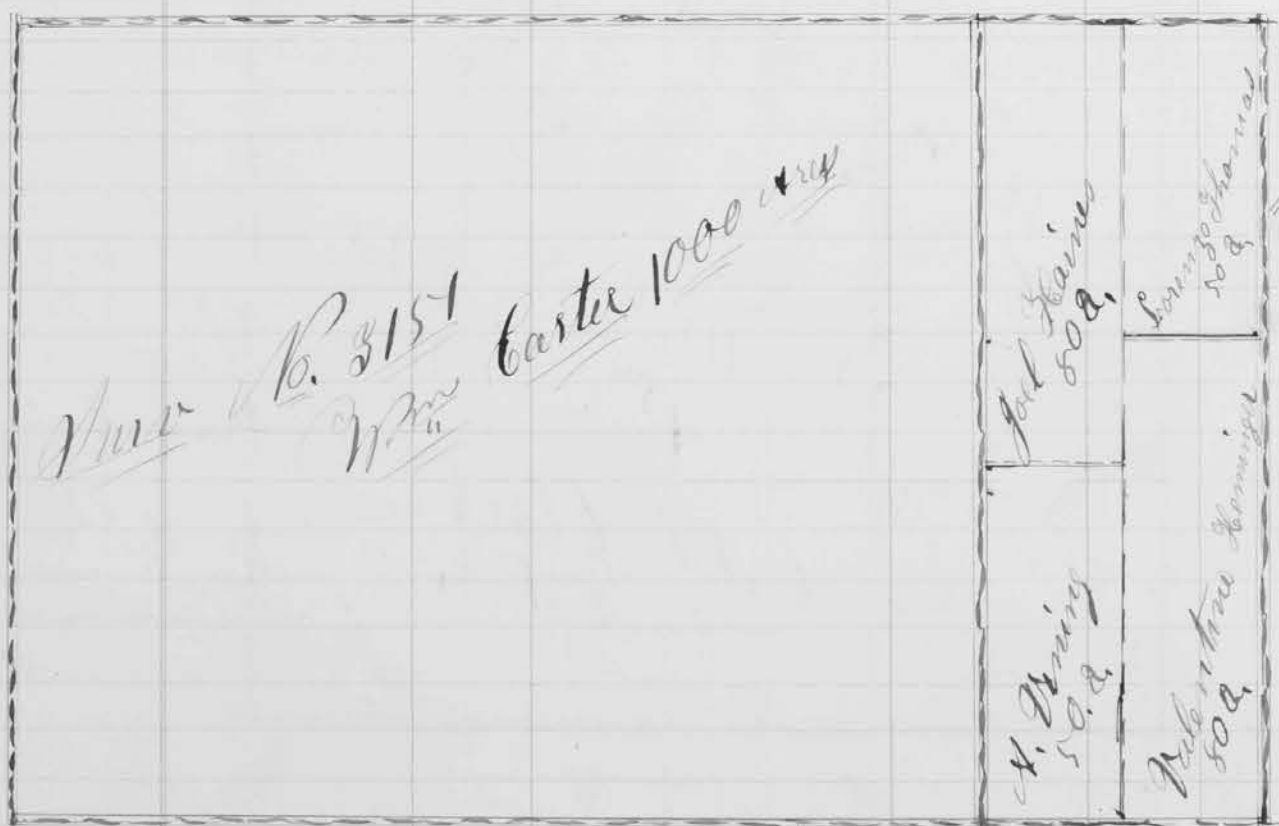
Township,

Union County, Ohio, as Returned by

Appraiser for 1859.

OWNERS' NAMES.	NO. OF ENTRY.	ORIGINAL QUANTITY.	ORIGINAL PROPRIETORS.	WATER COURSES.	No. of Lot.	No. of ACRES.	Value per ACRE. \$.	TOTAL VALUE of LANDS & BUILDINGS.	VALUE of LAND.	VALUE of BUILDINGS.	NUMBER OF ACRES OF LANDS.			REMARKS.
											PLOW.	Meadow and PASTURE.	WOOD.	

S Survey No. 3151 Wm Carter = 1000 acres
 " " 15309 J. Gallaway 260 acres



South

S Survey No. 7022 Haggard = 866 acres
 " " 14602 Measie = 40 "



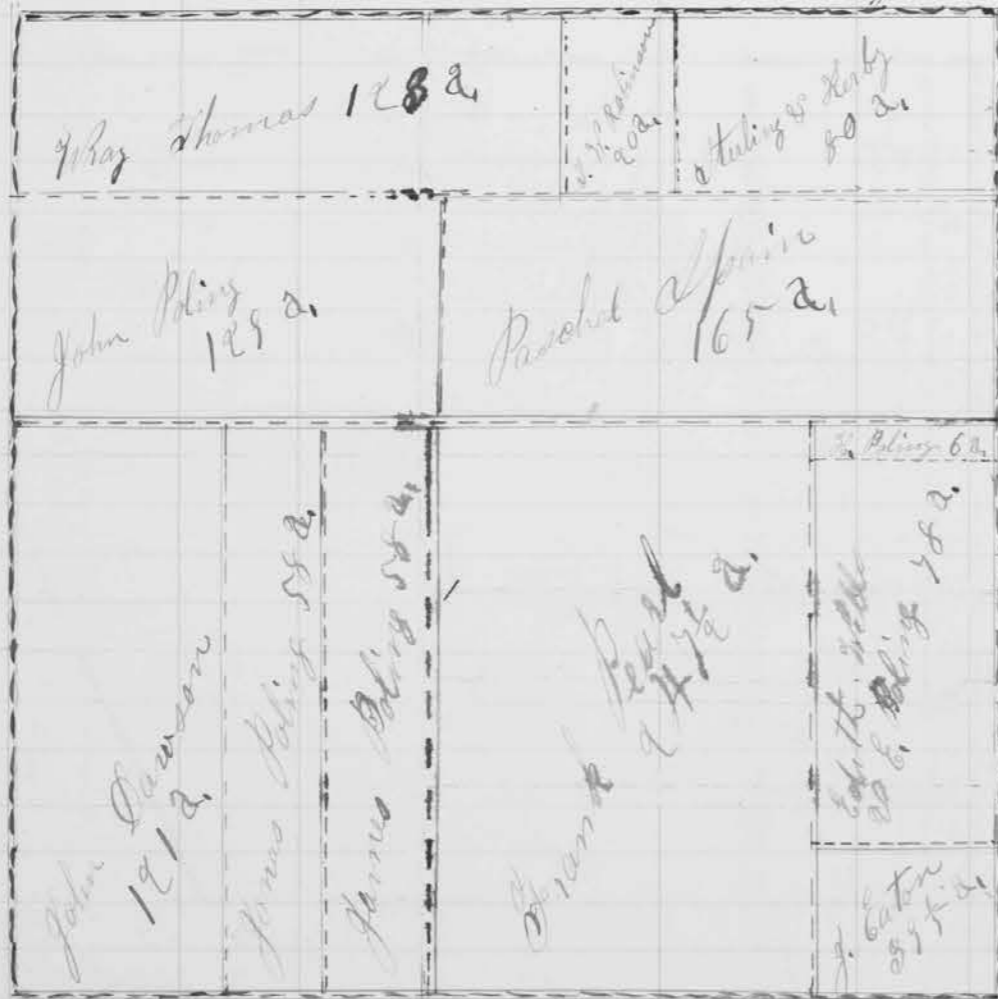
East

Description and Value of Lands and Town Lots in

Township,

OWNERS' NAMES. NO. OF ENTRY. ORIGINAL QUANTITY. ORIGINAL PROPRIETORS. WATER COURSES. No. of Lot. No. of ACRES. Value per A.C.R. \$ C. F. 0.

April 18 1881
 Andrew Triboune 1000 Acres



South

Union County, Ohio, as Returned by

Appraiser for 1859.

TOTAL VALUE OF LANDS & BUILDINGS. VALUE OF LAND. VALUE OF BUILDINGS. NUMBER OF ACRES OF LANDS. PLOW. PASTURE. WOOD. REMARKS.

4819	Benj. Bissan	83 1/2	Acres				
2741	O. R. Harrison	100					
2758	John Kuffelin	100					
2752	E. Cantel	100					
2745	L. Sullivan	200					



OWNERS' NAMES.	NO. OF ENTRY.	ORIGINAL QUANTITY.	ORIGINAL PROPRIETORS.	WATER COURSES.	No. of Lot.	No. of ACRES.	Value per A C P. S. C.
----------------	---------------	--------------------	-----------------------	----------------	-------------	---------------	------------------------

TOTAL VALUE of LANDS & BUILDINGS.	VALUE of LAND.	VALUE of BUILDINGS.	NUMBER OF ACRES OF LANDS. Meadow and PASTURE.	WOOD.	REMARKS.
-----------------------------------	----------------	---------------------	---	-------	----------

Surv. No. 2880, John M. Guyon 800 acres



Surv. No. 2875 Samuel Wallace 1000 acres
 " " " 3156 Henry Baumgartner 200 "
 " " " 3152 Wm. Barth 200 "



Description and Value of Lands and Town Lots in

Township,

Union County, Ohio, as Returned by

Appraiser for 1859.

OWNERS' NAMES.	NO. OF ENTRY.	ORIGINAL QUANTITY.	ORIGINAL PROPRIETORS.	WATER COURSES.	No. of Lot.	No. of ACRES.	Value per ACRE.	
							S.	C.

TOTAL VALUE of LANDS & BUILDINGS.	VALUE of LAND.	VALUE of BUILDINGS.	NUMBER OF ACRES OF LANDS.			REMARKS.
			PLOW.	Meadow and PASTURE.	WOOD.	

U	Surv. No. 2983	1000	Acres						
"	"	8742	"						
"	"	8741	"						
"	"	8697	"						

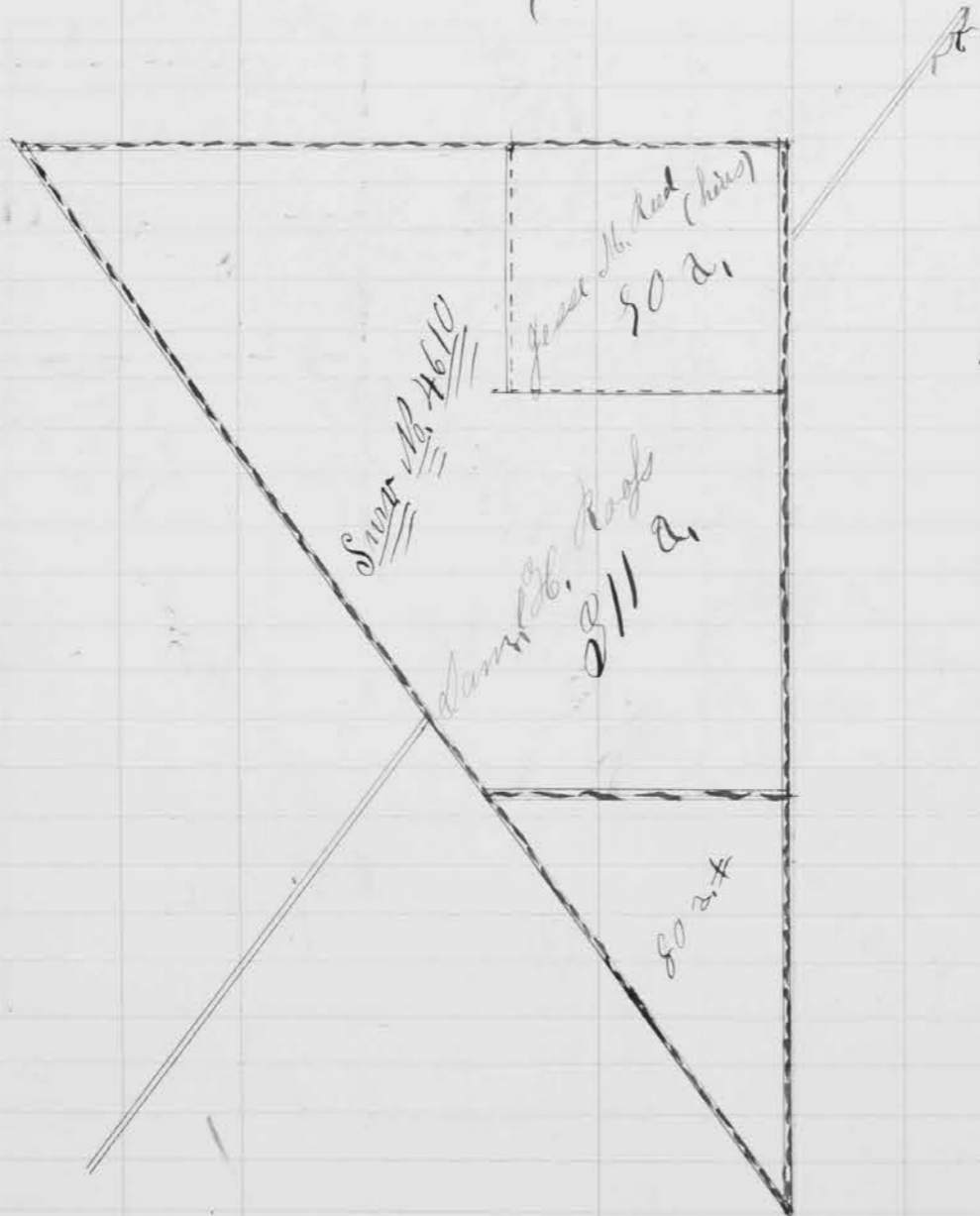


Description and Value of Lands and Town Lots in

Township,

OWNERS' NAMES.	NO. OF ENTRY.	ORIGINAL QUANTITY.	ORIGINAL PROPRIETORS.	WATER COURSES.	No. of Lot.	No. of ACRES.	Value per ACRE.
----------------	---------------	--------------------	-----------------------	----------------	-------------	---------------	-----------------

Surv. No. 4610 Peter Mansfield 481 a.
 (401 a. in Allen Township)



Surv. No. 5746 Jas. Callaway 860 Acres
 " " 6295 Zadoc Bailly 120 "

