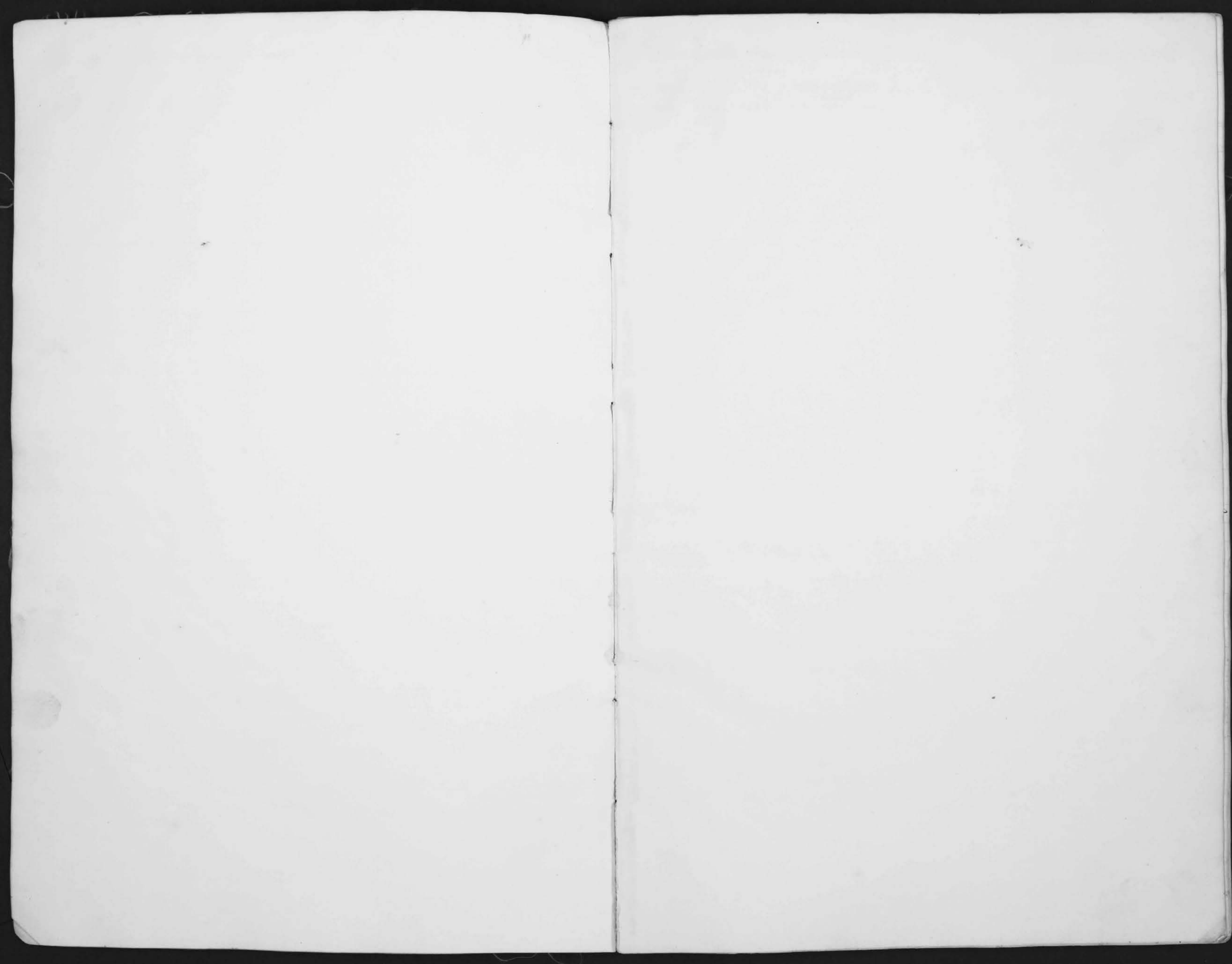


Carby 1839
Garrett Harris
Asessor
1835



Description and Value of Lands and Town Lots in *Darby* Township,

Union County, Ohio, as Returned by *Samuel Harris* Appraiser for 1859.

OWNERS' NAMES.	NO. OF ENTRY.	ORIGINAL QUANTITY.	ORIGINAL PROPRIETORS.	WATER COURSES.	No. of Lot.	No. of ACRES.	Value per A C R V. S. C.
Andrews Rufus	6973	1000	Jos Calloway	Darby C		56 2/3	23
"	12265	12	The Lucas	"		16	23
"	2877-12245	258	Schouler & Dunn	"		18 1/2	23
Adams Amos P.	3484	800	L Sullivant	"		9 3/4	15
"	3881	344	John Knight	"		50	9
"	"	"	"	"		"	"
Anderson Richd. (hwy)	5735	100	P. C. Anderson	"		100	9
Andrews J. M.	2671-3482	1566	P. C. Stevenson	"		156	16
"	2671	1000	"	"		40	12
"	"	"	"	"		115	10
Adams J. W.	3881	344	John Knight	"		73	13
Adams Osborn C.	"	"	"	"		73	13
Adams O. B.	"	"	"	"		75	14
Boyd Daniel	3162	650	L Sullivant	"		74	20
Black Daniel	3743		P. C. Means	"		50	5
Bloomeshire Adam	4067	1120	E. Richardson	"		80	14
"	5735	1000	P. C. Anderson	"		14 1/2	12
Bloomeshire Geo. Adam	4067	1120	E. Richardson	"		85	14
Brown Christopher C.	5735	1000	P. C. Anderson	"		40	11
Brown Michael M.	3687	348	John Scott	"		30	15
Brown Catharine	5008	657	Hugh Woodson	"		84	11
Brown Catharine M.	"	"	"	"		30	10
Brown Hendrick	7218	572	B. W. Ladd	"		223	14
Brown Jacob H. G.	"	"	"	"		72	14
Brown Adam	"	"	"	"		73	12
Brown Adam J. G.	8783	350	W. Dunn	"		240	22
"	12365	141	The Lucas	"		15 1/2	20
"	12240-2877	258	Schouler & Dunn	"		63	16
"	10753-12265	341	Lucas & Chapman	"		274	20
"	8783	350	W. Dunn	"		85	20
Brown Hannah	7218	572	B. W. Ladd	"		45	12
"	2875	1000	L. Sullivant	"		55	12
Brown Isaac	2671	1000	H. Stephenson	"		156	20

2246

TOTAL VALUE of LANDS & BUILDINGS.	VALUE of LAND.	VALUE of BUILDINGS.	NUMBER OF ACRES OF LANDS. PLO W.	Meadow and PASTURE.	WOOD.	Value appraised by the County Board of Exrs	Value appraised by the State Board of Exrs	REMARKS.
1519	1294	225	2	15	394	1519	1458	v
543	365	175	4	5	7	543	522	v
425	425			8	10 1/2	425	408	v
446	146	300	9 1/4			446	428	v
450	450			6	44	450	432	v
900	900				100	900	864	v
2880	2480	400	50	25	120	2880	2765	v
480	480					480	460	v
1150	1150				115	1150	1104	v
949	949		9	12	52	949	411	Should be Adams J. M.
949	949		16	15	42	949	411	v
1450	1050	400	19	15	41	1450	1392	v
145	145				7 1/2	145	140	this to Beek Loungs
400	400				50	400	384	Dropped No such land
1120	1120		36	14	30	1120	1075	v
1211	1211		16	12	72 1/2	1211	1163	v
1190	1190		25	10	50	1190	1142	v
440	440		31	4	5	440	422	v
360	360		6		14	360	346	v
924	924		42	6	36	924	887	v
200	200		4		16	200	192	v
3922	3122	800	69	39	115	3922	3765	v
1008	1008		42	15	15	1008	968	v
876	876		44	17	12	876	841	v
5680	5280	400	17	156	67	5680	5433	v
310	310				15 1/2	310	298	v
1008	1008			3	60	1008	968	v
540	540				27 1/2	540	518	v
160	160				8 1/2	160	154	v
540	540		15	15	70	540	518	v
660	660					660	634	v
3420	3120	300	80	15	61	3420	3284	v
36255	33255	3000	533	469	1244			

Description and Value of Lands and Town Lots in *Darby* Township,

Union County, Ohio, as Returned by *Garrett Harris* Appraiser for 1859.

OWNERS' NAMES.	NO. OF ENTRY.	ORIGINAL QUANTITY.	ORIGINAL PROPRIETORS.	WATER COURSES.	No. of Lot.	No. of ACRES.	Value per ACRE. \$.	TOTAL VALUE of LANDS & BUILDINGS.	VALUE of LAND.	VALUE of BUILDINGS.	NUMBER OF ACRES OF LANDS.			Value appraised by the County Board of Log	Value appraised by the State Board of Log	REMARKS.	
											PLOW.	Meadow and PASTURE.	WOOD.				
Brown Adam Brown Joshua	5008	657	Hugh Woodsan	Dorby C.		20	10	200	200				20	200	192	✓ on land changed to Wendell Brown	
Brown William	5008	657	Hugh Woodsan	"	"	20	10	200	200			4	14	200	192	✓	
Bibb Leonard	3482	566	R. Stephenson	"	"	116	15	2340	1740	600	31	10	75	2340	2246	✓	
Beech Lorenzo	3162	640	S. Sullivan	"	"	147	25	4475	3675	800	80		67	4475	4296	✓	
Bunsold John	3483	450	R. Stephenson	"	"	88	20	2377	1760	200	65	21	21	2377	2282	✓	
"	"	"	"	"	"	18			375								
"	"	"	"	"	"	3			42								
"	5005	200	R. Smith	"	"	2		55	55					55	53	✓	
"	4067	1120	E. Richman	"	"	15	9	122	122				15	122	117	✓	
Beech Adam	3735	1000	R. C. Anderson	"	"	20	14	280	240		10	1	9	280	269	✓	
Beech Adam	3735	1000	R. C. Anderson	"	"	27	12	356	356		15		14	356	342	✓	
Bitwell Addison	7916	800	Gas Johnson	"	"	150	22	3450	3300	150	15	110	25	3450	3312	✓	
Brown Rhoda	5008	800	Hugh Woodsan	"	"	20	10	200	200				8	12	200	192	✓
Brown Emanuel	3739	1000	R. C. Anderson	"	"	30	13	390	390				12	18	390	374	✓
"	5008	657	Hugh Woodsan	"	"	41	12	492	492			25	10	6	492	472	✓
Brown J. C.	"	"	"	"	"	1	261	261	11	250	1			261	251	✓	
Brown Vincent	3735	1000	R. C. Anderson	"	"	30	14	420	420				24	6	420	402	✓
Brown Josiah M.	3687	548	John Scott	"	"	63	10	630	630				20	43	630	605	✓
Brown J. C.	3735	1000	R. C. Anderson	"	"	30											
Beard Andrew (hus)	3687	548	John Scott	"	"	116	15	1740	1740			91	10	15	1740	1670	✓
"	3482-3682	876	Powers & Stephenson	"	"	50	14	700	700				45	5	700	672	✓
Brooks Hannah	3743	200	Gas Callaway	D. Darby		28	25	1050	700	350	14	8	6	1050	1008	✓	
Bland John	2875	1000	S. Sullivan	Dorby C.		97	17	2457	1657	600	24	42	3	2457	2359	✓	
"	"	"	"	"		20	10		200		10		10				
Boyer John & Wm						196	17	3732	3332	400	43	11	14	3732	3584	✓	
Boyer John & Wm	2875	1000	S. Robinson	"	"			25666	22566	3100	488	273	560				
						1921		261	11	250	1						

Description and Value of Lands and Town Lots in *Darby* Township,

Union County, Ohio, as Returned by *Garrett Harris* Appraiser for 1859.

OWNERS' NAMES.	NO. OF ENTRY.	ORIGINAL QUANTITY.	ORIGINAL PROPRIETORS.	WATER COURSES.	No. of Lot.	No. of ACRES.	Value per ACRE. \$ C.	TOTAL VALUE of LANDS & BUILDINGS.	VALUE of LAND.	VALUE of BUILDINGS.	NUMBER OF ACRES OF LANDS.			Val. as appraised by the County Board of Supervisors.	Val. as appraised by the State Board of Equalization.	REMARKS.	
											PLOW.	Meadow and PASTURE.	WOOD.				
<i>Calwell John</i>	<i>3687</i>	<i>54</i>	<i>John Scott</i>	<i>Darby C</i>		<i>100</i>	<i>15</i>	<i>1500</i>	<i>1500</i>			<i>35</i>	<i>40</i>	<i>25</i>	<i>1500</i>	<i>1440</i>	<i>✓</i>
"	<i>5005</i>	<i>200</i>	<i>R. Smith</i>	"		<i>8</i>	<i>5</i>	<i>64</i>	<i>64</i>					<i>8</i>	<i>64</i>	<i>62</i>	<i>✓</i>
<i>Coulter Joel C.</i>	"	"	"	"		<i>39</i>	<i>18</i>	<i>507</i>	<i>507</i>			<i>26</i>	<i>32</i>	<i>10</i>	<i>507</i>	<i>487</i>	<i>✓</i>
<i>Chapman Abner</i>	<i>3162</i>	<i>640</i>	<i>J. Sullivan</i>	"		<i>205</i>	<i>22</i>	<i>4770</i>	<i>4620</i>	<i>150</i>		<i>50</i>		<i>160</i>	<i>4770</i>	<i>4580</i>	<i>✓</i>
<i>Chapman Amazo W.</i>	<i>5111</i>	<i>80</i>	"	"		<i>38</i>	<i>15</i>	<i>504</i>	<i>504</i>						<i>504</i>	<i>484</i>	<i>✓</i>
"	<i>3162</i>	<i>640</i>	"	"		<i>32</i>	<i>19</i>	<i>576</i>	<i>576</i>			<i>20</i>	<i>8</i>	<i>32</i>	<i>576</i>	<i>533</i>	<i>✓</i>
<i>Cranston John</i>	<i>3483</i>	<i>450</i>	<i>R. Stephenson</i>	"		<i>123 1/4</i>	<i>19</i>	<i>2350</i>	<i>2250</i>	<i>100</i>		<i>25</i>	<i>75</i>	<i>25 3/4</i>	<i>2350</i>	<i>2256</i>	<i>✓</i>
"	"	"	"	"		<i>3 1/2</i>											
<i>Converse Caleb</i>	<i>7516</i>	<i>800</i>	<i>Jas. Johnston</i>	"		<i>15</i>	<i>20</i>	<i>800</i>	<i>800</i>	<i>500</i>				<i>15</i>	<i>800</i>	<i>768</i>	<i>✓</i>
<i>Cooperider Wm</i>	<i>5005</i>	<i>200</i>	<i>R. Smith</i>	"		<i>61</i>	<i>25</i>	<i>150</i>	<i>150</i>			<i>62</i>			<i>150</i>	<i>144</i>	<i>✓</i>
<i>Converse Jasper R.</i>	<i>3483 1/2</i>	<i>450</i>	<i>J. Sullivan</i>	"		<i>73</i>	<i>10</i>	<i>730</i>	<i>730</i>					<i>73</i>	<i>730</i>	<i>700</i>	<i>✓</i>
<i>Converse C. C.</i>	<i>7245</i>	<i>543</i>	<i>Johnson & Graham</i>	"		<i>155</i>	<i>22</i>	<i>3710</i>	<i>3410</i>	<i>300</i>		<i>13</i>	<i>50</i>	<i>92</i>	<i>3710</i>	<i>3562</i>	<i>✓</i>
"	<i>8586 - 8678</i>	<i>141</i>	<i>W. Dunn</i>	"		<i>100</i>	<i>22</i>	<i>2200</i>	<i>2200</i>			<i>16</i>	<i>40</i>	<i>44</i>	<i>2200</i>	<i>2162</i>	<i>✓</i>
<i>Colman John A.</i>	<i>4067</i>	<i>1120</i>	<i>E. Rickman</i>	"		<i>10</i>											
<i>Converse Labrop</i>	<i>5124</i>	<i>400</i>	<i>Jas. Galloway</i>	"		<i>8 3/4</i>	<i>35</i>	<i>297</i>	<i>297</i>					<i>8 3/4</i>	<i>297</i>	<i>285</i>	<i>✓</i>
<i>Cunningham J. W.</i>	<i>3881</i>	<i>344</i>	<i>John Knight</i>	"		<i>48</i>	<i>13</i>	<i>624</i>	<i>624</i>			<i>15</i>	<i>9</i>	<i>24</i>	<i>624</i>	<i>600</i>	<i>✓</i>
<i>Converse Caleb W.</i>	<i>12167</i>	<i>200</i>	<i>R. Smith</i>	"		<i>9 1/4</i>	<i>15</i>	<i>1638</i>	<i>1638</i>			<i>4 1/4</i>	<i>63</i>	<i>24</i>	<i>1638</i>	<i>1578</i>	<i>✓</i>
<i>Clark R. C.</i>	<i>5005</i>	"	<i>R. Smith</i>	"		<i>28</i>	<i>14</i>	<i>392</i>	<i>392</i>			<i>1</i>		<i>24</i>	<i>392</i>	<i>376</i>	<i>✓</i>
<i>Church Sathorian</i>	<i>4067</i>	<i>1120</i>	<i>E. Rickman</i>	"		<i>25</i>	<i>10</i>	<i>650</i>	<i>250</i>	<i>400</i>				<i>1</i>	<i>652</i>	<i>626</i>	<i>✓</i>
"	"	"	"	"		<i>10</i>	<i>20</i>	<i>450</i>	<i>200</i>	<i>250</i>				<i>6</i>	<i>450</i>	<i>432</i>	<i>✓</i>
<i>Dunnick W. H.</i>	<i>5124</i>	<i>400</i>	<i>Jas. Galloway</i>	<i>Darby C</i>		<i>3 1/2</i>										<i>80</i>	<i>✓</i>
"	<i>2671 - 3482</i>	<i>1566</i>	<i>R. Stephenson</i>	"	<i>mill</i>	<i>5 3/4</i>	<i>110</i>	<i>2140</i>	<i>240</i>	<i>1900</i>				<i>5 3/4</i>	<i>2140</i>	<i>2054</i>	<i>✓</i>
<i>Doelinger Conrad</i>	<i>4903</i>	<i>100</i>	<i>Tom Petty</i>	"		<i>4 5/8</i>	<i>13</i>	<i>638</i>	<i>438</i>			<i>21</i>	<i>5</i>	<i>17 1/2</i>	<i>638</i>	<i>612</i>	<i>✓</i>
<i>Doelinger Conrad</i>	<i>4067</i>	<i>1120</i>	<i>E. Rickman</i>	"		<i>30</i>	<i>12</i>	<i>240</i>	<i>240</i>			<i>12</i>	<i>6</i>	<i>2</i>	<i>240</i>	<i>230</i>	<i>✓</i>
"	"	"	"	"		<i>60</i>	<i>14</i>	<i>840</i>	<i>840</i>			<i>25</i>	<i>10</i>	<i>25</i>	<i>840</i>	<i>806</i>	<i>✓</i>
<i>Doelinger Geo.</i>	<i>15310</i>	<i>80</i>	<i>J. Galloway</i>	"		<i>5</i>	<i>6</i>	<i>30</i>	<i>30</i>					<i>5</i>	<i>30</i>	<i>29</i>	<i>✓</i>
<i>Doekum James</i>	<i>8586-8678-12207</i>	<i>691</i>	<i>J. Sullivan</i>	"		<i>316</i>	<i>21</i>	<i>7236</i>	<i>6536</i>	<i>700</i>		<i>40</i>	<i>82</i>	<i>194</i>	<i>7236</i>	<i>6947</i>	<i>✓</i>
<i>Doep John</i>	<i>4067</i>	<i>1120</i>	<i>E. Rickman</i>	"		<i>8 1/2</i>	<i>12</i>	<i>1038</i>	<i>1038</i>			<i>30</i>	<i>7</i>	<i>49 1/2</i>	<i>1038</i>	<i>998</i>	<i>✓</i>
<i>Doelitte Aaron</i>	<i>5124</i>	<i>400</i>	<i>J. Galloway</i>	"		<i>3 1/2</i>	<i>50</i>	<i>25</i>	<i>25</i>			<i>1 1/2</i>	<i>3</i>	<i>6 1/2</i>	<i>25</i>	<i>24</i>	<i>✓</i>
<i>Douglas John</i>	<i>5137</i>	<i>1000</i>	<i>R. C. Andrew</i>	"		<i>87</i>	<i>12</i>	<i>1044</i>	<i>1044</i>			<i>8</i>	<i>2</i>	<i>77</i>	<i>1044</i>	<i>1002</i>	<i>✓</i>
<i>Dasher Philip</i>	<i>4067</i>	<i>1120</i>	<i>E. Rickman</i>	"		<i>40</i>	<i>12</i>	<i>550</i>	<i>450</i>	<i>100</i>		<i>20</i>	<i>2</i>	<i>18</i>	<i>550</i>	<i>537</i>	<i>✓</i>
							<i>1773</i>	<i>35713</i>	<i>31323</i>	<i>14400</i>		<i>374</i>	<i>431</i>	<i>968</i>			

*owned by Harper
Val put in by appraiser
J. C. W.*

Description and Value of Lands and Town Lots in *Darby* Township,

Union County, Ohio, as Returned by *Garrett Harciff* Appraiser for 1859.

OWNERS' NAMES.	NO. OF ENTRY.	ORIGINAL QUANTITY.	ORIGINAL PROPRIETORS.	WATER COURSES.	No. of Lot.	No. of ACRES.	Value per A.C.R.E. & C.	TOTAL VALUE of LANDS & BUILDINGS.	VALUE of LAND.	VALUE of BUILDINGS.	NUMBER OF ACRES OF LANDS.			Value as fixed by the County Board of Supervisors	Value as fixed by the State Board of Equalization	REMARKS.
											PLOW.	Meadow and PASTURE.	WOOD.			
<i>Ell John Adam</i>	<i>4067</i>	<i>1120</i>	<i>E Beckman</i>	<i>Darby C</i>	<i>20</i>	<i>14</i>		<i>280</i>	<i>280</i>		<i>12</i>	<i>3</i>	<i>5</i>	<i>280</i>	<i>270</i>	<i>✓</i>
<i>Ell Sebastian</i>	<i>4558</i>	<i>350</i>	<i>P Manifold</i>	<i>" "</i>	<i>16</i>	<i>9</i>		<i>128</i>	<i>128</i>			<i>16</i>		<i>128</i>	<i>123</i>	<i>✓</i>
<i>Ell Frederick</i>	<i>"</i>	<i>"</i>	<i>"</i>	<i>" "</i>	<i>28</i>	<i>12</i>		<i>336</i>	<i>336</i>		<i>4</i>	<i>8</i>	<i>16</i>	<i>336</i>	<i>322</i>	<i>✓</i>
<i>Erich Geo.</i>	<i>3483</i>	<i>450</i>	<i>R Stephenson</i>	<i>" "</i>	<i>78</i>	<i>19</i>		<i>1482</i>	<i>1482</i>		<i>21</i>	<i>38</i>	<i>19</i>	<i>1482</i>	<i>1323</i>	<i>✓</i>
<i>Erich Barbara</i>	<i>"</i>	<i>"</i>	<i>"</i>	<i>" "</i>	<i>16</i>	<i>18</i>		<i>308</i>	<i>308</i>		<i>16</i>			<i>308</i>	<i>296</i>	<i>✓</i>
<i>"</i>	<i>"</i>	<i>"</i>	<i>"</i>	<i>" "</i>	<i>7 1/4</i>	<i>18</i>		<i>130</i>	<i>130</i>		<i>7 1/4</i>			<i>130</i>	<i>125</i>	<i>✓</i>
<i>"</i>	<i>2875</i>	<i>1000</i>	<i>L Sullivant</i>	<i>" "</i>	<i>48 1/3</i>	<i>12</i>		<i>576</i>	<i>576</i>		<i>10</i>		<i>38 1/3</i>	<i>576</i>	<i>533</i>	<i>✓</i>
<i>Ford Jas. S.</i>	<i>5008</i>	<i>657</i>	<i>Hugh Woodson</i>	<i>Darby C</i>	<i>120</i>	<i>12</i>		<i>1714</i>	<i>1464</i>	<i>250</i>	<i>41</i>	<i>14</i>	<i>67</i>	<i>1714</i>	<i>1646</i>	<i>✓</i>
<i>"</i>	<i>8142</i>	<i>200</i>	<i>Jane Arnold</i>	<i>" "</i>	<i>8 1/4</i>	<i>12</i>		<i>474</i>	<i>474</i>		<i>23</i>		<i>16 1/2</i>	<i>474</i>	<i>455</i>	<i>✓</i>
<i>Fay B. A.</i>	<i>8167</i>	<i>100</i>	<i>W. Dunn</i>	<i>" "</i>	<i>79</i>	<i>22</i>		<i>2238</i>	<i>1788</i>	<i>500</i>	<i>11</i>	<i>48</i>	<i>20</i>	<i>2238</i>	<i>2148</i>	<i>✓</i>
<i>"</i>	<i>10753</i>	<i>200</i>	<i>D. Chapman</i>	<i>" "</i>	<i>40</i>	<i>22</i>		<i>850</i>	<i>850</i>		<i>20</i>	<i>20</i>		<i>880</i>	<i>845</i>	<i>✓</i>
<i>Fenner Benjamin</i>	<i>6602</i>	<i>683</i>	<i>J Galloway</i>	<i>" "</i>	<i>154</i>	<i>20</i>		<i>3850</i>	<i>3850</i>		<i>16</i>	<i>120</i>	<i>58</i>	<i>3850</i>	<i>3625</i>	<i>✓</i>
<i>Ferguson Wesley</i>	<i>3711</i>	<i>80</i>	<i>L Sullivant</i>	<i>" "</i>	<i>11</i>			<i>720</i>	<i>520</i>	<i>200</i>	<i>20</i>	<i>7</i>		<i>720</i>	<i>692</i>	<i>✓</i>
<i>"</i>	<i>"</i>	<i>"</i>	<i>"</i>	<i>" "</i>	<i>16</i>	<i>20</i>		<i>500</i>	<i>500</i>	<i>450</i>		<i>1</i>		<i>500</i>	<i>480</i>	<i>✓</i>
<i>"</i>	<i>7245</i>	<i>343</i>	<i>Johnston & Graham</i>	<i>" "</i>	<i>1</i>	<i>50</i>		<i>500</i>	<i>500</i>	<i>450</i>				<i>500</i>	<i>480</i>	<i>✓</i>
<i>Guy James</i>	<i>3162</i>	<i>650</i>	<i>L Sullivant</i>	<i>" "</i>	<i>145 1/2</i>	<i>25</i>		<i>3843</i>	<i>3643</i>	<i>200</i>	<i>70</i>	<i>37 1/2</i>	<i>38 1/2</i>	<i>3843</i>	<i>3689</i>	<i>✓</i>
<i>Guy John</i>	<i>4558</i>	<i>350</i>	<i>P Manifold</i>	<i>" "</i>	<i>175</i>	<i>16</i>		<i>2900</i>	<i>2800</i>	<i>100</i>	<i>64</i>	<i>10</i>	<i>101</i>	<i>2900</i>	<i>2784</i>	<i>✓</i>
<i>Guse John C.</i>	<i>5741</i>	<i>100</i>	<i>W. Steele</i>	<i>" "</i>	<i>112</i>	<i>12</i>		<i>1344</i>	<i>1344</i>		<i>5</i>		<i>107</i>	<i>1344</i>	<i>1290</i>	<i>✓</i>
<i>Grenbaum Michael</i>	<i>5005</i>	<i>200</i>	<i>Po Smith</i>	<i>" "</i>	<i>57</i>	<i>11</i>		<i>561</i>	<i>561</i>		<i>28</i>	<i>3</i>	<i>20</i>	<i>561</i>	<i>540</i>	<i>✓</i>
					<i>1200</i>			<i>22394</i>	<i>20694</i>	<i>1700</i>	<i>368</i>	<i>310</i>	<i>522</i>			

Description and Value of Lands and Town Lots in *Darby* Township,

Union County, Ohio, as Returned by *Garrett Harris* Appraiser for 1859.

OWNERS' NAMES.	NO. OF ENTRY.	ORIGINAL QUANTITY.	ORIGINAL PROPRIETORS.	WATER COURSES.	No. of Lot.	No. of ACRES.	Value per A C R E. \$ C.	TOTAL VALUE of LANDS & BUILDINGS.	VALUE of LAND.	VALUE of BUILDINGS.	NUMBER OF ACRES OF LANDS.			Val as fixed by the State Board of Equalization		REMARKS.
											PLOW.	Meadow and PASTURE.	WOOD.	the State	Board of Eq	
Harris Garrett	5008	657	Hugh Woodson	Darby C.		70 14		1380	980	100	17	36	27	1380	1330 v	
"	5142	200	J. Arnold	"		1 1/2 13		1892	982		38	112 1/2		1892	1826 v	
"	4067	1120	E Rickman	"		57 12		684	684		18	1	37	684	658 v	
Harris George																House on one hundred 81 acre S. Patch
Harris Wm. J.	8687	548	John Scott	"		63 12		756	756		19	1	13	756	726 v	
Harris Wm.	7393	313	John Graham	"		6 1/4 14		1196	896	300	24	4	40 1/2	1196	1148 v	
Holycrop David	7393	313	John Graham	"		5 1/2 22		1276	1276		10	18	30	1276	728 v	
"	8586-8698	441	L Sullivan	"		83 20		2460	1660	800		12	41	2460	2362 v	
"	7916	800	J Johnston	"		46 22		1012	1012		18	20	8	1012	972 v	
"			"	"		30 22		660	660		15	15		660	634 v	
"	12075	55	H. Woodson	"		2 3/4 22		587	587		24 1/2	2		587	564 v	
"	12169	200	S Smith	"		8 1/2 20		170	170			8 1/2		170	164 v	
"	7420	100	James Chambers	"		100 21		2100	2100		10	90		2100	2019 v	
Holycrop Spencer	3163	640	L Sullivan	"		5 30		250	150	100	5			250	240 v	
Hewson Joseph	3687	548	J. Scott	"		126 14		2026	1726	300	30	20	76	2026	1946 v	
Hoffman Nicholas	5135	1000	R C Anderson	"		30 1/2 12		868	868		9	5	16 1/2	868	854 v	
Hesper Harrison																House
Irwin John (mrs)	2875	1000	L Sullivan	"		81 20		2480	2030	450	50	10	4 1/2	2480	2380 v	
Irwin James H.	"	"	"	"		37 1/2 12		720	720		40	15	5	720	610 v	six 1/2 acres to sister Hester at 12 p.m.
Irwin Jas S.	5724	400	Jas. Galloway	"		43		550	210	340	5	2		550	523 v	
Jolly John	5124	400	Jas Galloway	"		3 1/2 50		425	425		5			425	408 v	
"	"	"	"	"		6 1/2 50										
Jolly Joel	3111-3372-5256	2671	R C Stephenson	"		50 1/2 12		611	611				50 1/2	611	587 v	
Johnson Griffin	5008	651	Hugh Woodson	"		30 12		240	240		8		12	240	230 v	
						1160		21842	19152	2690	333	257	540			

Description and Value of Lands and Colon Lots in *Darby* Township.

Union County, Ohio, as Returned by *Garrett Harris* Appraiser for 1859.

OWNERS' NAMES.	NO. OF ENTRY.	ORIGINAL QUANTITY.	ORIGINAL PROPRIETORS.	WATER COURSES.	No. of Lot.	No. of ACRES.	Value per A.C.E. \$ C.	TOTAL VALUE of LANDS & BUILDINGS.	VALUE of LAND.	VALUE of BUILDINGS.	NUMBER OF ACRES OF LANDS.			Value as fixed by the County Board of 1857	Value as fixed by the State Board of 1857	REMARKS.
											PLOW.	Meadow and PASTURE.	WOOD.			
<i>King Henry J.</i>	1225-7516	400	<i>Henderson & Graham</i>	<i>Darby C.</i>	<i>House</i>	94	22	2122	2222	500	35	41	25	2568	2466 v	
" "	6233	100	<i>Little Henderson</i>	" "		7								1374	148 v	
<i>Bendall Sexton</i>	5757-7218-7564	656 1/2	<i>Gas Galloway</i>	" "		80	14	1120	1120		20	5	55	1120	1075 v	
" "	5008	265	<i>Hugh Woodson</i>	" "		50	14	700	700		16	24	10	700	672 v	
<i>Book Lewis</i>	4598	350	<i>P. Manifold</i>	" "		3	14	42	42		3			42	40 v	
" "	5122	100	<i>M. Smith</i>	" "		66	14	1874	924	250	34	18	142	1174	1128 v	
<i>Bliber John</i>	5757-7218-7564	656 1/2	<i>Gas Galloway</i>	" "		113	14	1582	1582		22	6	85	1582	1518 v	
" "	7218-2579	1572 1/2	<i>Sullivan & Ladd</i>	" "		47	9	423	423				47	423	406 v	
<i>Kern Michael</i>	3483-5007	715	" <i>Woodson</i>	" "		120	14	1680	1680		50	30	40	1680	1612 v	
<i>Suhlman Adam</i>	4067	1120	<i>S. Wickman</i>	" "		150	14	2640	2240	400	80	20	60	2640	2534 v	
" "						10			700							
<i>Kern Casper</i>	5009	265	<i>Hugh Woodson</i>	" "		50	14	825	700	125	20	10	20	825	792 v	
<i>Hammer Joseph</i>	4598	350	<i>P. Manifold</i>	" "		60 1/2	12	843	843		20	10	35 1/2	843	810 v	should be 704
" "						5										
<i>Boaidler John</i>	4503	100	<i>Wm. Petty</i>	" "		70 1/4	14	984	984		20	15	35 1/2	984	944 v	
<i>Wargo George</i>	4598	350	<i>P. Manifold</i>	" "		21	12	252	252		16		5	252	242 v	
<i>Wotts Lorand</i>	4503	100	<i>Wm. Petty</i>	" "		1 1/2	12	9	9		1 1/2			9	8 v	should be Wotts Lorand
<i>Fiber Margaret</i>	2879	1000	<i>L. S. Sullivan</i>	" "		6	15	185	185		2	1	6	135	130 v	
" "	3311	think 288	<i>is "union Sullivans" (Auditors)</i>	" "		3 1/2										
<i>Latram Allen</i>	5739	1000	<i>P. C. Anderson</i>	" "		407	10	11070	4070				407	4070	3908 v	
<i>Mitchell Daniel</i>	3671	1000	<i>P. Stephenson</i>	" "		117	14	2315	1638	350	24	12	81	2348	2254 v	
" "						36	10		360				36			
<i>Mitchell James</i>	2875	1000	<i>L. Sullivan</i>	" "		20	10	200	200		13		7	200	192 v	
<i>Mitchell Moss</i>	5724	400	<i>Gas Galloway</i>	" "		130 1/4	25	3365	3268	100	21	71	38 1/2	3238	3108 v	deduct 7130
" "	7245	543	<i>Gas Johnston</i>	" "		230	22	5108	5108		60	25	145	3108	4902 v	
<i>Mitchell David (heir)</i>	2879	1000	<i>L. Sullivan</i>	" "		152 1/4	25	5106	4806	300	117	60 1/2	144	5106	4902 v	
<i>Mitchell John & A. B.</i>	"	"	"	"		133 1/4	16	2144	2144					2144	2062 v	
" "	"	"	"	"		133 1/2	14	1862	1862				133 1/2	1862	1788 v	
<i>Moss B. G.</i>	4582	100	<i>B. King</i>	" "		30	26	1300	1300	"	18	32		1300	1248 v	
<i>Martin James</i>	3312	273	<i>L. Sullivan</i>	" "		150	25	4750	3750	1000	46	25	79	4450	4272 v	deduct 3500
" "	3302-7245	543	<i>Johnson & Sullivan</i>	" "		80	25	2000	2000		23	28	29	2000	1920 v	
<i>Marquis John</i>	10752	200	<i>D. Chapman</i>	" "		100	21	2850	2100	250	40	10	50	2350	2256 v	
<i>Marquis David</i>	7218	572 1/2	<i>B. L. Ladd</i>	" "		150	14	2300	2100	200	60	25	65	2300	2208 v	
" "	2879	1000	<i>L. Sullivan</i>	" "		103	11	1133	1133		30	30	40	1133	1078 v	
<i>Mossridge B. G.</i>	5724	400	<i>Gas. Galloway</i>	" "		15	20	400	300	100	4	11		400	384 v	
<i>Marshall Lemah</i>	5005	200	<i>P. Smyth</i>	" "		7	8	1317	56		31	20	53	1317	1264 v	
<i>Marshall Joseph</i>	5005	200	<i>P. Smyth</i>	" "		27	13		1261							
							300 1/2		53754	50179	3575	195	637	1573		

Description and Value of Lands and Town Lots in *Darby* Township,

Union County, Ohio, as Returned by *Garrett Harris* Appraiser for 1859.

OWNERS' NAMES.	NO. OF ENTRY.	ORIGINAL QUANTITY.	ORIGINAL PROPRIETORS.	WATER COURSES.	No. of Lot.	No. of ACRES.	Value per A C R E. \$ C.	TOTAL VALUE of LANDS & BUILDINGS.	VALUE of LAND.	VALUE of BUILDINGS.	NUMBER OF ACRES OF LANDS.			Val as fixed by the Can. & by the State of Ohio	Val as fixed by the State Board of Equalization	REMARKS.
											P L O W.	Meadow and PASTURE.	W O O D.			
<i>Must George</i>	<i>3484</i>	<i>800</i>	<i>L Sullivan</i>	<i>Darby C</i>		<i>6</i>	<i>25</i>	<i>150</i>	<i>150</i>	<i>100</i>	<i>6</i>			<i>150</i>	<i>744</i>	<i>v</i>
<i>Miller John G.</i>	<i>5005</i>	<i>200</i>	<i>R Smyth</i>	" "		<i>13</i>	<i>12</i>	<i>156</i>	<i>156</i>		<i>7</i>	<i>1</i>	<i>5</i>	<i>156</i>	<i>150</i>	<i>v</i>
<i>Miller John C.</i>	<i>2875</i>	<i>1000</i>	<i>L Sullivan</i>	" "		<i>4 1/4</i>	<i>10</i>	<i>248</i>	<i>248</i>		<i>7</i>	<i>37 1/2</i>		<i>248</i>	<i>238</i>	<i>v</i>
<i>McDowell Saml.</i>	<i>12267</i>	<i>141</i>	<i>Tho Lucas</i>	" "		<i>28</i>	<i>18</i>	<i>504</i>	<i>504</i>			<i>14</i>	<i>14</i>	<i>504</i>	<i>484</i>	<i>v</i>
<i>McDowell And. (heirs)</i>	<i>10587-12170</i>		<i>D Chapman</i>	" "		<i>36</i>	<i>15</i>	<i>648</i>	<i>648</i>			<i>18</i>	<i>18</i>	<i>648</i>	<i>622</i>	<i>v</i>
<i>McDullough Saml.</i>	<i>3484</i>	<i>800</i>	<i>L Sullivan</i>	" "		<i>30</i>	<i>16</i>	<i>480</i>	<i>480</i>		<i>5</i>		<i>25</i>	<i>480</i>	<i>462</i>	<i>v</i>
<i>McDier John</i>	<i>3737</i>	<i>1000</i>	<i>M C Anderson</i>	" "		<i>1 1/2</i>	<i>14</i>	<i>1435</i>	<i>1435</i>		<i>4.5</i>	<i>15</i>	<i>4 1/2</i>	<i>1435</i>	<i>1378</i>	<i>v</i>
<i>McBramis John</i>	"	"	" " "	" "		<i>30</i>	<i>14</i>	<i>420</i>	<i>420</i>		<i>15</i>	<i>15</i>		<i>420</i>	<i>404</i>	<i>should be McBrown John</i>
<i>Stulp John</i>	<i>5007</i>	<i>265</i>	<i>Hugh Woodson</i>	<i>Darby C</i>		<i>30</i>	<i>14</i>	<i>700</i>	<i>700</i>		<i>16</i>	<i>6</i>	<i>28</i>	<i>700</i>	<i>672</i>	<i>v</i>
<i>Stulp Andrew</i>	<i>2875</i>	<i>1000</i>	<i>L Sullivan</i>	" "		<i>9 1/2</i>		<i>135</i>	<i>135</i>		<i>2</i>			<i>135</i>	<i>130</i>	<i>v</i>
<i>Stulp George</i>	"	"	" " "	" "		<i>9 1/2</i>	<i>15</i>				<i>1</i>					
<i>Stool Geo.</i>	<i>4067</i>	<i>1120</i>	<i>E. Wickman</i>	" "		<i>110</i>	<i>14</i>	<i>1640</i>	<i>1540</i>		<i>5.5</i>	<i>5</i>	<i>50</i>	<i>1640</i>	<i>1574</i>	<i>790 790</i>
" "	"	"	" " "	" "		<i>10</i>	<i>10</i>		<i>100</i>				<i>40</i>			
<i>Stool John</i>	<i>2877</i>	<i>1000</i>	<i>L Sullivan</i>	" "		<i>5 1/4</i>	<i>11</i>	<i>619</i>	<i>619</i>		<i>20</i>	<i>4</i>	<i>3 1/2</i>	<i>619</i>	<i>584</i>	<i>v</i>
<i>Stool Geo. M.</i>	<i>13310</i>	<i>572 1/2</i>	<i>Jas Galloway</i>	" "		<i>8 1/2</i>	<i>10</i>	<i>770</i>	<i>770</i>		<i>16</i>	<i>5 1/2</i>	<i>5 1/2</i>	<i>770</i>	<i>740</i>	<i>v</i>
<i>Norton W. W.</i>	<i>12264</i>	<i>141</i>	<i>Tho Lucas</i>	" "		<i>43</i>	<i>22</i>	<i>946</i>	<i>946</i>		<i>40</i>		<i>3</i>	<i>946</i>	<i>908</i>	<i>v</i>
" " "	<i>10753</i>	<i>200</i>	<i>D. Chapman</i>	" "		<i>48</i>	<i>22</i>	<i>1406</i>	<i>1056</i>	<i>350</i>	<i>45</i>		<i>3</i>	<i>1406</i>	<i>1342</i>	<i>v</i>
<i>Orr William</i>	<i>3687</i>	<i>348</i>	<i>John Scott</i>	" "		<i>103</i>	<i>14</i>	<i>2534</i>	<i>1828</i>	<i>250</i>	<i>45</i>	<i>38</i>	<i>82</i>	<i>2534</i>	<i>2433</i>	<i>v</i>
" " "	"	"	" " "	" "		<i>63</i>	<i>12</i>		<i>856</i>							
<i>Patrick Saml</i>	<i>5008</i>	<i>657</i>	<i>Hugh Woodson</i>	" "		<i>101</i>	<i>12</i>	<i>1212</i>	<i>1212</i>		<i>36</i>	<i>22</i>	<i>43</i>	<i>1212</i>	<i>1164</i>	<i>should be Patch Samuel</i>
<i>Patrick John</i>	<i>6223</i>	<i>100</i>	<i>Little Hudson</i>	" "		<i>48</i>	<i>20</i>	<i>960</i>	<i>960</i>		<i>22</i>	<i>14</i>	<i>12</i>	<i>960</i>	<i>922</i>	<i>v</i>
<i>Patrick Lydia</i>	"	"	" " "	" "		<i>3</i>	<i>8</i>	<i>24</i>	<i>24</i>				<i>3</i>	<i>24</i>	<i>23</i>	<i>v</i>
<i>Patch Harmon</i>	<i>3881</i>	<i>344</i>	<i>John Knight</i>	" "		<i>3 1/4</i>	<i>8</i>	<i>298</i>	<i>298</i>				<i>3 1/4</i>	<i>298</i>	<i>286</i>	<i>v</i>
<i>Parr Samuel</i>	<i>3671</i>	<i>1000</i>	<i>R Stephens</i>	" "		<i>5 1/2</i>	<i>12</i>	<i>600</i>	<i>600</i>		<i>8</i>	<i>2</i>	<i>40 1/2</i>	<i>600</i>	<i>576</i>	<i>v</i>
<i>Powell Tho. W.</i>	<i>3671</i>	<i>1000</i>	" " "	" "		<i>30</i>	<i>13</i>	<i>650</i>	<i>650</i>		<i>22</i>	<i>5</i>	<i>23</i>	<i>650</i>	<i>624</i>	<i>v 175, raise area</i>
<i>Price Philip</i>	<i>5137-7218-7514</i>	<i>654</i>	<i>Jas Galloway</i>	" "		<i>57</i>	<i>13</i>	<i>741</i>	<i>741</i>		<i>25</i>	<i>10</i>	<i>22</i>	<i>741</i>	<i>711</i>	<i>v this is thirty three 1/2 30' to John Kendall & wife about 1/2 difference is regard to the improved land - should be in the appraisement Garrett Harris</i>
								<i>1218</i>								
								<i>16276</i>	<i>15676</i>	<i>600</i>	<i>1138</i>	<i>197</i>	<i>583</i>			

Description and Value of Lands and Town Lots in *Darby* Township,

Union County, Ohio, as Returned by *Garrett H. Hensley* Appraiser for 1859.

OWNERS' NAMES.	NO. OF ENTRY.	ORIGINAL QUANTITY.	ORIGINAL PROPRIETORS.	WATER COURSES.	No. of Lot.	No. of ACRES.	Value per A C R E. \$ C.	TOTAL VALUE of LANDS & BUILDINGS.	VALUE of LAND.	VALUE of BUILDINGS.	NUMBER OF ACRES OF LANDS.			Value appraised by the County Board \$	Value appraised by the State Board of Reg.	REMARKS.
											P L O W.	Meadow and PASTURE.	WOOD.			
<i>Wanue John</i>	5053	42	<i>P. Manifold</i>	<i>Darby</i>		38 1/4	12	917	717		23	7	298	717	688	✓
<i>Robinson John Jr</i>	2577	600	<i>J. Robinson</i>	"		100	20	2600	2000	600	55	22	23	2600	2496	✓
<i>Robinson James</i>	"	"	"	"		230	25	6450	5750	700	120	25	95	6450	6172	✓
<i>Robinson Land.</i>	3682	310	<i>Robert Power</i>	"		84 1/2	16	1477	1352	125	30	30 1/2	24	1477	1418	✓
<i>Reed Thomas</i>	2675-3483	1450	<i>Stephens & Sullivan</i>	"		57	20	1140	1140		32	20	5	1140	1074	✓
<i>Reid Geo. Jr.</i>	5003	80	<i>B. W. Ladd</i>	"		76	12	912	912		20	15	41	912	876	✓
<i>Reish John Adam</i>																House on 96 Acres changed to John West
<i>Robinson Joseph</i>	5005	200	<i>P. Smith</i>	"		1/4										
"	2875	1000	<i>John Scott</i>	"		150 3/4	2 3/4	4173	3473	700	100 1/2	25	25	4173	4006	✓
<i>Robinson L. D.</i>	3482-3682	870	<i>Stephens & Power</i>	"		184 1/2	16	3752	2952	800	45	6 1/2	70	3752	3600	✓
<i>Reish Philip</i>	7218	592 1/2	<i>B. W. Ladd</i>	"		78	13	1014	1014		13	32	13	1014	974	✓
<i>Reish Geo. Jr.</i>	"	"	"	"		78	13	1014	1014		30	13	35	1014	974	✓
<i>Robinson D. M.</i>	5734	400	<i>Geo Callaway</i>	"		91 1/2	26	3379	2379	1000	31	27		3379	3244	✓
"	7245	343	<i>Geo Johnston</i>	"		18	26	2155	2155		5	17	20 1/2	2158	2072	✓
"	"	"	"	"		35					5	16	20			
"	7299	86	<i>Geo Chambers</i>	"		78 1/2					7		10 1/2			sixty acres charged to M.P. line
"	5724	400	<i>Geo Callaway</i>	"		33 1/2						9	24 1/2			thirty three in eluded yr above
"	7399	86	<i>J. Chambers</i>	"		25 1/2	24	600	600		7 1/2			600	576	✓
"	12075	5 1/2	<i>Geo Roader</i>	"		12 3/4	24	306	306		12 1/2			306	294	✓
<i>Reppell John</i>	3224-7353	713	<i>Callaway & Johnson</i>	"		40	20	500	500		10	6	24	800	768	✓
"	7353	313	<i>John Abraham</i>	"		30	18	540	540		4	6	20	540	518	✓
<i>Rease George</i>	4067	1120	<i>E. Reichman</i>	"		180	13	2940	2340	600	27	15	138	2940	2822	✓
"	"	"	"	"		35 1/4	9	317	317		1	3	314	317	304	✓
"	5122	100	<i>Minor Smith</i>	"		53	12	636	636		20	18	28	636	610	✓
"	9005	13	<i>J. B. W. Ladd</i>	"		13	12	156	156					156	150	✓
<i>Rease Geo Jr.</i>	4067	1120	<i>E. Reichman</i>	"		40	10	605	455	150	6	3	36 1/2	605	580	✓
"	"	"	"	"		5 1/2										
<i>Rease Philip</i>	"	"	"	"		94 1/2	10	1400	1000	400	13	2	53	1400	1344	✓
"	"	"	"	"		5 1/2										
<i>Repsight Lotter</i>	5008	657	<i>Hugh Woodson</i>	"		15	9	135	135		3		13	135	130	✓
<i>Repsight Lotter 2nd</i>	4067	1120	<i>E. Reichman</i>	"		43 1/2	8	346	346				13 1/2	346	332	✓
<i>Reid William</i>	3312	132	<i>L. Sullivan</i>	"		78	22	1806	1606	200	38	27	8	1806	1734	✓
<i>Rice W.</i>	5724	400	<i>Geo Callaway</i>	"		1 1/4	40	70	70			1		70	68	✓
								89443	84168	5275	691	396	5352			

1947 1859

Description and Value of Lands and Town Lots in *Darby* Township.

Union County, Ohio, as Returned by *Garnett Harris* Appraiser for 1859.

OWNERS' NAMES.	NO. OF ENTRY.	ORIGINAL QUANTITY.	ORIGINAL PROPRIETORS.	WATER COURSES.	No. of Lot.	No. of ACRES.	Value per ACRE. \$ C.
<i>Rice Moss P.</i>	7377	1000	<i>Jas Johnston</i>	<i>Darby</i>		1/8 22	
" " "	4882	100	<i>B. King</i>	" "		65 26	
" " "	12227	40	<i>Joseph Spain</i>	" "		45 22	
" " "	12167	300	<i>W. Smith</i>	" "		2 1/8 22	
" " "	"	"	" "	" "		21 20	
" " "	12075	33	<i>W. Woodman</i>	" "		15 20	
" " "	12167	200	<i>S. Smith</i>	" "		18	
" " "	6602	183	<i>Jas Galloway</i>	" "		100 20	
" " "	2879	1000	<i>S. Sullivan</i>	" "		7 3/8 18	
" " "	3311-3312	350	" "	" "		14 1/8 18	
						61 23	
<i>Rice David</i>	2675	1000	<i>S. Sullivan</i>	" "		8 2/3 14	
<i>Robinson J. C.</i>	2671	1000	<i>P. Stephenson</i>	" "		5 1/2 15	
" " "	5124	400	<i>Jas Galloway</i>	" "		1/3 30	
<i>Robinson A. P.</i>	3311-3312	350	<i>S. Sullivan</i>	" "		78 26	
" " "	"	"	" "	" "		26	
<i>Robinson W. S.</i>	2777	600	<i>Sam. Robinson</i>	" "		30 14	
" " "	"	"	" "	" "		124 18	
<i>Robinson J. W.</i>	2671	1000	<i>P. Stephenson</i>	" "		11 3/4 16	
						1015	

TOTAL VALUE of LANDS & BUILDINGS.	VALUE of LAND.	VALUE of BUILDINGS.	NUMBER OF ACRES OF LANDS.			Val. as fixed by the County Board of Equalization	Value as fixed by the State Board of Equalization	REMARKS.
			P E O W.	Meadow and PASTURE.	WOOD.			
2486	2486		15		98	2486	2386	v
2190	1690	500	40	10	15	2190	2106	v
990	990		23		22	990	930	v
530	530		24 1/2			530	504	v
420	420		6	15		420	404	v
310	310			15 1/2		310	298	v
2000	2000		40	25	35	2000	1940	v
132	132				7 1/2	132	128	v
257	257		1	13 1/2		257	246	v
1403	1403		40	21		1403	1348	v
1186	1186		65	14	15 1/2	1186	1138	v
1573	1373	200	25	2	6 1/2	1573	1510	v
10	10		5			10	10	v
3104	2704	400	30	68	6	3104	2983	v
420	420		3		27	420	404	v
2382	2232	150	50	25	49	2382	2286	v
1812	1812		50	6 3/8		1812	1730	v ¹⁰⁰
21205	19953	1250	403	272	340			

Description and Value of Lands and Town Lots in *Darby* Township,

Union County, Ohio, as Returned by *Garrett Harris* Appraiser for 1859.

OWNERS' NAMES.	NO. OF ENTRY.	ORIGINAL QUANTITY.	ORIGINAL PROPRIETORS.	WATER COURSES.	No. of Lot.	No. of ACRES.	Value per ACRE. \$ C.	TOTAL VALUE of LANDS & BUILDINGS.	VALUE of LAND.	VALUE of BUILDINGS.	NUMBER OF ACRES OF LANDS.			Val. assigned by the County Board of Equalization	Val. assigned by the State Board of Equalization	REMARKS.
											PLOW.	Meadow and PASTURE.	WOOD.			
Lager Samuel	5005	200	Dr Smyth	Darby C		77		Transferred to				Jonah Marshall				
" " "	"	"	" " "	" "		7		"	"	"	"	"	"	"	"	
Lager Michael	14437	40	McLager	" "		21 20		420	420		4	4	17	420	404 v	
" "	3111-3372-3236	280	L Sullivan	" "		19 22		618	418	200	4	15		618	594 v	
" "	3724	400	Dr Jas Galloway	" "		1 1/2 18		435	35	400		2		435	418 v	
" "	12240-12877	258	Dun & Chess	" "		3 18		454	54			3		454	436 v	
Lager Samuel	3111-3272-5236	280	L Sullivan	" "		186 22		4342	4092	250	30	50	106	4342	4168 v	
" "	8783	350	Tr. Dun	" "		9 1/2 22		2012	2012		35	26	30	2012	1832 v	
Lager Frederick	3724	400	J. Galloway	" "		106 24		2916	2516	400	35	28	48	2916	2800 v	
" "	"	"	" " "	" "		3 7					1	2				
Lager John	2071	1000	Dr Stephenson	" "		38 10		380	380				38	380	266 v	
Lager David	3724	400	Jas Galloway	" "		4 1/2 25		316	166	150	2	2 1/2		316	304	
" "	"	"	" " "	" "		1 1/4 40		30	30			3/4		30	29	1000
" "	"	"	" " "	" "		5 1/2 23		1173	1173		30	2	19 1/2	1173	1126	one half acre in grave yard
Shulby Henry	1778	350	P Manifold	" "		30 13		390	390		20	4	6	390	374 v	
Shidner Stephen	5008	657	Hugh Woodson	" "		30 13		950	650	300	28	12	10	950	912 v	
" "	3742	200	John Arnold	" "		2 1/2 13		383	383	200	8	1	19 1/2	383	368 v	
Shidner Geo.	5008	657	Hugh Woodson	" "		30 14		900	700	200	23	17	10	900	864 v	
" "	"	"	" " "	" "		80 12		960	960		30	38	12	960	922 v	
Shidner John M.	4067	1120	E. Dickman	" "		133 14		2420	2170	250	46	29	102	2420	2324 v	
" " "	"	"	" " "	" "		22 8		176	176					176	170 v	
Shidner Frederick	3483	450	L Sullivan	" "		53 19		1755	1045	150	21 1/2		6	1755	1683 v	
" "	"	"	" " "	" "		2 1/2 19			560		5 1/2					
Smith John W.	7616	800	Jas Johnston	L Dodge		181 22		4082	3982	100	3	100	78	4082	3920 v	
" " "	"	"	" " "	" " "		98 20		1960	1960		12	51	35	1960	1884 v	
Smith G. & E. Jr.	7751-7754	447	" " "	" " "		127 22		3694	2794	900	28	47 1/2	49 1/2	3694	3546 v	
" " " "	10810	75	" " "	" " "		75 22		1650	1650		30	45		1650	1584 v	
" " " "	7388	71	John Graham	" " "		91 20		1820	1820			45	46	1820	1748 v	
Smith E. Jr.	3162	640	L Sullivan	Darby C		28 18		504	504			21	7	504	484 v	
Smith E. D.	"	"	" " "	" "		64 18		1152	1152			32	32	1152	1106 v	
						1691		33492	32192	3300	444	576	671			

Description and Value of Lands and Town Lots in *Darby* Township,

Union County, Ohio, as Returned by *Garrett Harritt* Appraiser for 1859.

OWNERS' NAMES.	NO. OF ENTRY.	ORIGINAL QUANTITY.	ORIGINAL PROPRIETORS.	WATER COURSES.	No. of Lot.	No. of ACRES.	Value per A.C.R.E.		TOTAL VALUE of LANDS & BUILDINGS.	VALUE of LAND.	VALUE of BUILDINGS.	NUMBER OF ACRES OF LANDS.			Value as appraised by the County Board of Equalization.	Value as fixed by the Fair Board.	REMARKS.	
							§.	¢.				PLOW.	PASTURE.	WOOD.				
Stephens Geo.	8508	80	W. Durr	Darby		20			24 16	1916	500				24 16	23 20		
" "	"	"	" "	"		63 1/2	23					12	7 1/2					
" "	8167	100	" "	"		20	22		4 40	4 40			20		1 40	4 22	322 1000	
" "	12240-12877	258	Leaster & Durr	"		268 1/2	22		59 07	59 07		45	193 1/2	30	59 07	56 71		
" "	" "	"	" "	"		24	20		4 50	4 80			12	12	4 80	4 88		
" "	8783	340	W. Durr	"		42	20		8 40	8 40			27	15	8 40	8 06		
" "	5111	80	L. Sullivan	"		23 1/2	20		4 70	4 70			13 1/2	10	4 70	4 48		
Smith Jas. S.	12069	250	The Lucas	Darby		63 1/2	23		14 60	14 60			11	42	10 1/2	14 60	14 02	
" " "	8586-8678-12267	651	Lucas, Durr & Graham	"		50	23		23 50	11 50	1200		25	25	23 50	22 56		
" " "	7353	313	John Graham	"		38	23		8 74	8 74			2	26	10	8 74	8 44	
Smith James	10753-12267	341	Lucas & Chapman	"		86 1/2	23		23 39	19 89	350		26	44 1/2	16	23 39	22 46	
Stonbauer James	4067	1120	B. Richman	"		74 1/2	13		12 68	9 68	300		45	11	18 1/2	12 68	12 18	966
Herwood Jeremiah	3682-3881					50	14		13 70	11 20	250		30	5	115	13 70	13 15	136 1/2 Should be
Sullivan Lucas (heir)	2671	1000	P. Stephenson	"					34 50	25 50	900		25	20	105	34 50	32 12	
" "	3482	566 1/2	" "	"		150	17											
Schneider J. M.	7218	552 1/2	B. W. Ladd	"		106 1/2	13		20 28	20 28			46	29	18 1/2	20 28	19 48	
" " "	"	"	" "	"		48 1/2									2			
Smith John B.	1663-7755		Durr & Callaway	"		36	22		7 90	7 90			16	10	10	7 90	7 58	
Schneider Geo. C.	2675	1000	L. Sullivan	"		3 1/2	40		200	200			2 1/2			200	192	
" " "	"	"	" "	"		2								2				
Stoner George	7218	572 1/2	B. W. Ladd	"		160 1/2	14		26 47	22 47	400		50		100	26 47	25 41	
Stierkopf Andrew	3157-7218-7764	654	Jas Callaway	"		80	15		12 00	12 00			30	6	44	12 00	11 52	
Stirling Wm.	3483	450	Stephenson & Sullivan	"		115	12		14 28	14 28				119		14 28	13 72	
Tosower Joseph	4548	350	P. Manifold	"		20	15		3 00	3 00			10	3	7	3 00	2 88	
Steinbauer John	3675	1000	L. Sullivan	"		3	20		40	40			1		1	40	38	
Star George	7218	552 1/2	B. W. Ladd	"		21	14		2 94	2 94			21			2 94	2 82	
State of Ohio	2875	1000	L. Sullivan	"		50	11		5 50	5 50			24	10	16	5 50	5 23	
" " "	9003	80	B. W. Ladd	"		4	8		12	12								
						1653			33 141	292 41	3900	570	397	1686				

Description and Value of Lands and Town Lots in *Darby* Township,

Union County, Ohio, as Returned by *Garrett Harris* Appraiser for 1859.

OWNERS' NAMES.	NO. OF ENTRY.	ORIGINAL QUANTITY.	ORIGINAL PROPRIETORS.	WATER COURSES.	No. of Lot.	No. of ACRES.	Value per A.C.E. C.	TOTAL VALUE	VALUE	VALUE	NUMBER OF ACRES OF LANDS.			Val. as per	Val. as per	REMARKS.
								of LANDS & BUILDINGS.	of LAND.	of BUILDINGS.	PLOW.	Meadow and PASTURE.	WOOD.	by the County Board of Reps.	by the State Board of Reps.	
<i>Tinkham Benj.</i>	<i>6602, 7716</i>	<i>1483</i>	<i>Johnston & Gallaway</i>	<i>Darby c</i>		<i>158</i>	<i>18</i>	<i>3294</i>	<i>2844</i>	<i>450</i>	<i>20</i>	<i>50</i>	<i>58</i>	<i>3294</i>	<i>3162</i>	<i>✓</i>
<i>Tompson Robt</i>	<i>5135</i>	<i>1000</i>	<i>R. C. Anderson</i>	<i>" "</i>		<i>103</i>	<i>11</i>	<i>1385</i>	<i>1260</i>	<i>125</i>	<i>28</i>		<i>75</i>	<i>1385</i>	<i>1330</i>	<i>✓</i>
<i>" "</i>	<i>"</i>	<i>"</i>	<i>" "</i>	<i>" "</i>		<i>11 1/2</i>					<i>2 1/2</i>	<i>9</i>				
<i>Subraught Adam</i>	<i>4067</i>	<i>1120</i>	<i>E. Richman</i>	<i>" "</i>		<i>14 1/2</i>	<i>12</i>	<i>177</i>	<i>177</i>		<i>4</i>	<i>1</i>	<i>9 1/2</i>	<i>177</i>	<i>170</i>	<i>✓</i>
<i>Winget Wm</i>	<i>2675</i>	<i>1000</i>	<i>L. Sullivan</i>	<i>" "</i>		<i>142</i>	<i>20</i>	<i>3440</i>	<i>2840</i>	<i>600</i>	<i>47</i>	<i>65</i>	<i>80</i>	<i>3440</i>	<i>3302</i>	<i>✓</i>
<i>West Conrad</i>	<i>4067</i>	<i>1120</i>	<i>E. Richman</i>	<i>" "</i>		<i>56</i>	<i>10</i>	<i>1270</i>	<i>970</i>	<i>300</i>	<i>25</i>	<i>5</i>	<i>66</i>	<i>1270</i>	<i>1220</i>	<i>Should be West John</i>
<i>Wolf George</i>	<i>5007</i>	<i>265</i>	<i>Hugh Woodson</i>	<i>" "</i>		<i>50</i>	<i>15</i>	<i>750</i>	<i>750</i>		<i>30</i>	<i>3</i>	<i>17</i>	<i>750</i>	<i>720</i>	<i>✓</i>
<i>" "</i>	<i>4778</i>	<i>350</i>	<i>P. Manifold</i>	<i>" "</i>		<i>28</i>	<i>12</i>	<i>336</i>	<i>336</i>		<i>12</i>	<i>16</i>		<i>336</i>	<i>322</i>	<i>✓</i>
<i>Wolf Geo M.</i>	<i>"</i>	<i>"</i>	<i>" "</i>	<i>" "</i>		<i>50</i>	<i>12</i>	<i>600</i>	<i>600</i>		<i>25</i>	<i>4</i>	<i>21</i>	<i>600</i>	<i>376</i>	<i>✓</i>
<i>Woods W. W.</i>	<i>"</i>	<i>"</i>	<i>" "</i>	<i>" "</i>		<i>2 1/2</i>	<i>10</i>	<i>22</i>	<i>22</i>				<i>2 1/2</i>	<i>22</i>	<i>22</i>	<i>No such land</i>
<i>Wolford Adam</i>	<i>3482</i>	<i>566 2/3</i>	<i>R. Stephens</i>	<i>" "</i>		<i>150</i>	<i>16</i>	<i>2500</i>	<i>2400</i>	<i>400</i>	<i>70</i>	<i>10</i>	<i>70</i>	<i>2800</i>	<i>2688</i>	<i>✓</i>
<i>" "</i>	<i>3682</i>	<i>310</i>	<i>R. Power</i>	<i>" "</i>		<i>10</i>	<i>8</i>	<i>80</i>	<i>80</i>				<i>80</i>	<i>78</i>	<i>✓</i>	
<i>Winget Marion A.</i>	<i>3162</i>	<i>650</i>	<i>L. Sullivan</i>	<i>" "</i>		<i>142</i>	<i>25</i>	<i>4150</i>	<i>3550</i>	<i>600</i>	<i>57</i>	<i>35</i>	<i>50</i>	<i>4180</i>	<i>3984</i>	<i>✓</i>
<i>Walker Thos.</i>	<i>5724</i>	<i>400</i>	<i>" "</i>	<i>" "</i>		<i>1</i>	<i>50</i>	<i>350</i>	<i>50</i>	<i>300</i>	<i>1</i>			<i>350</i>	<i>338</i>	<i>✓</i>
						<i>757</i>		<i>18654</i>	<i>15879</i>	<i>2775</i>	<i>320</i>	<i>198</i>	<i>439</i>			

Description and Value of Lands and Town Lots in *Union* Township,

Union County, Ohio, as Returned by *John W. ...* Appraiser for 1859.

OWNERS' NAMES.	NO. OF ENTRY.	ORIGINAL QUANTITY.	ORIGINAL PROPRIETORS.	WATER COURSES.	No. of ACRES.	Value per ACRE. S. C.	TOTAL VALUE of LANDS & BUILDINGS.	VALUE of LAND.	VALUE of BUILDINGS.	NUMBER OF ACRES OF LANDS.			REMARKS.
										PLOW.	Meadow and PASTURE.	WOOD.	
					12 ³ 2246		36255	38255	3000	583	469	1244	
					2 ^m 1321		25666	22566	3100	488	278	560	
					3 ^m 1773		35723	31323	4400	374	431	965	
					4 th 1200		22394	20694	1700	368	310	522	
					5 th 1160		21842	19152	2690	333	287	540	
					6 th 3005		53754	50179	3575	795	637	1573	
					7 th 1215		16276	15676	600	438	197	583	
					8 th 1941		39443	34168	5275	691	598	852	
					9 th 1015		21205	19955	1250	403	272	360	
					10 th 1691		35492	32192	3300	444	576	671	
					11 th 1653		33141	29241	3900	570	397	686	
					12 th 757		18654	15879	2775	320	178	489	
					19180		359845	324280	35565	5757	4445	8978	

