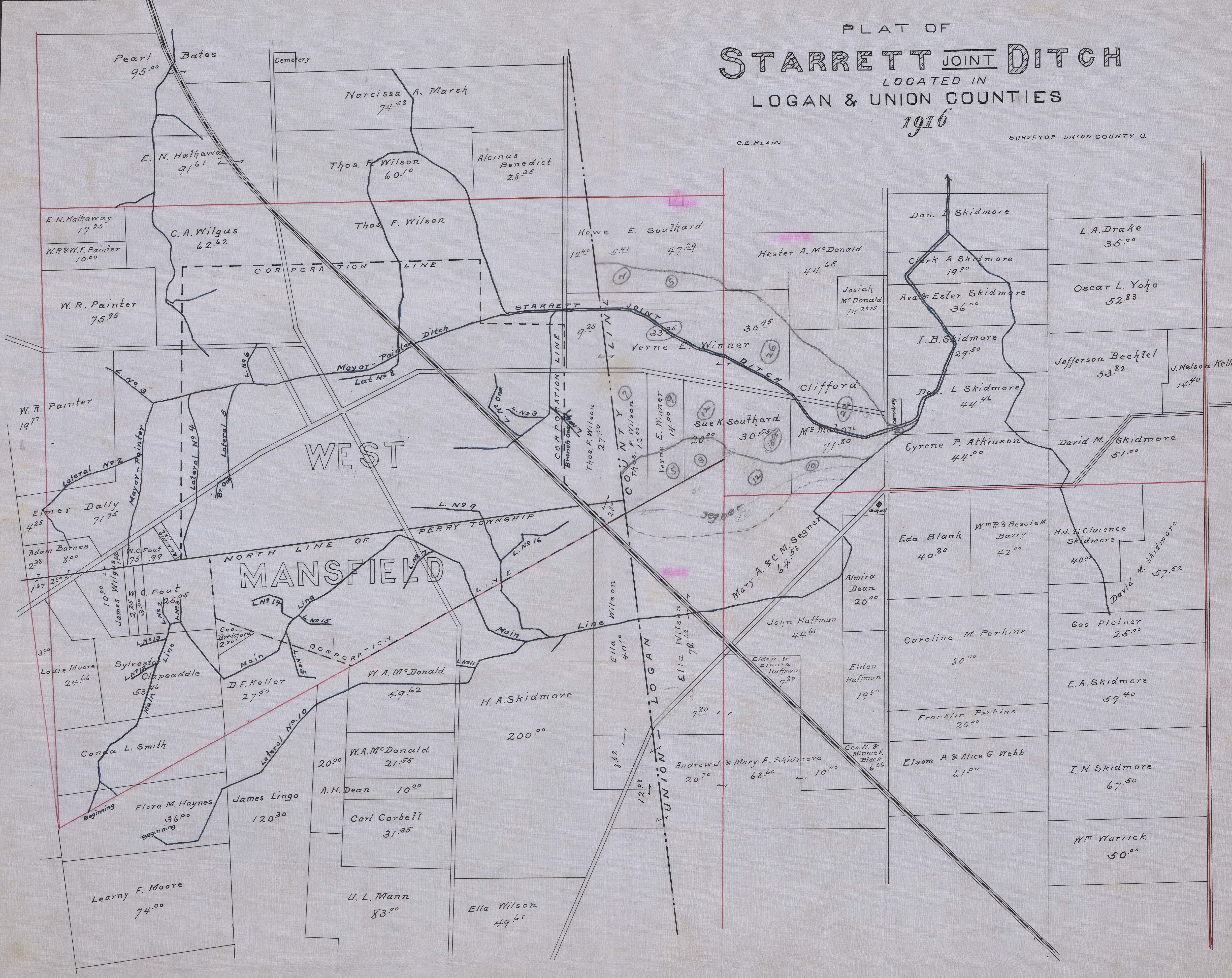


PLAT OF
STARRETT JOINT DITCH
 LOCATED IN
 LOGAN & UNION COUNTIES
 1916

C.E. BLAW

SURVEYOR UNION COUNTY O.



Begins Bates Creek Twp. Logan Co.
 Ends York Township - Union Co. V.M.S. 2982
 Total Acres Drained 136.00 Union Co.

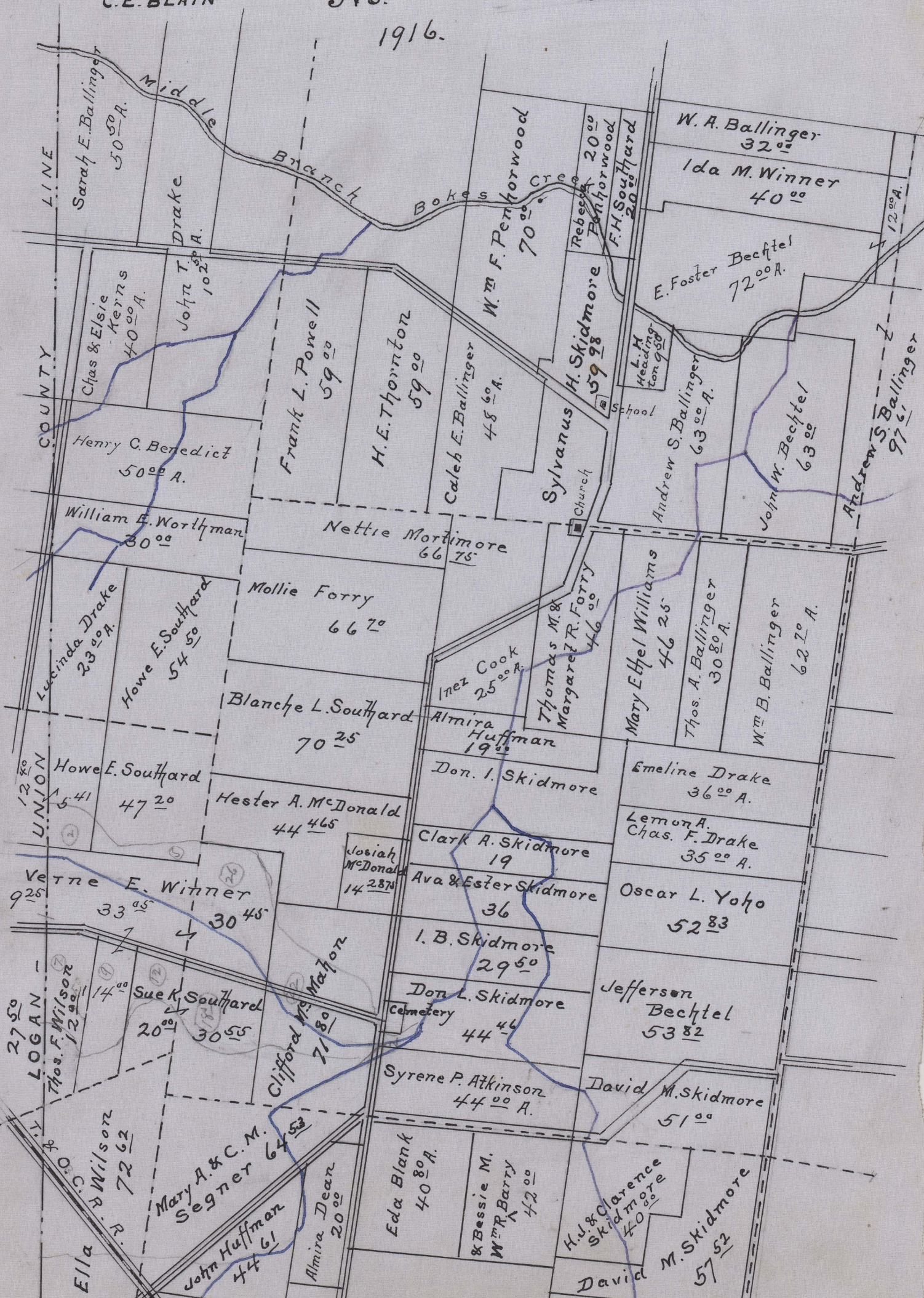
PLAT OF STARRETT JOINT DITCH LOCATED IN LOGAN & UNION COUNTIES

C.E. BLAIN

No.

SURVEYOR UNION CO.

1916.



Scale, 8 Inches = 1 Mile