

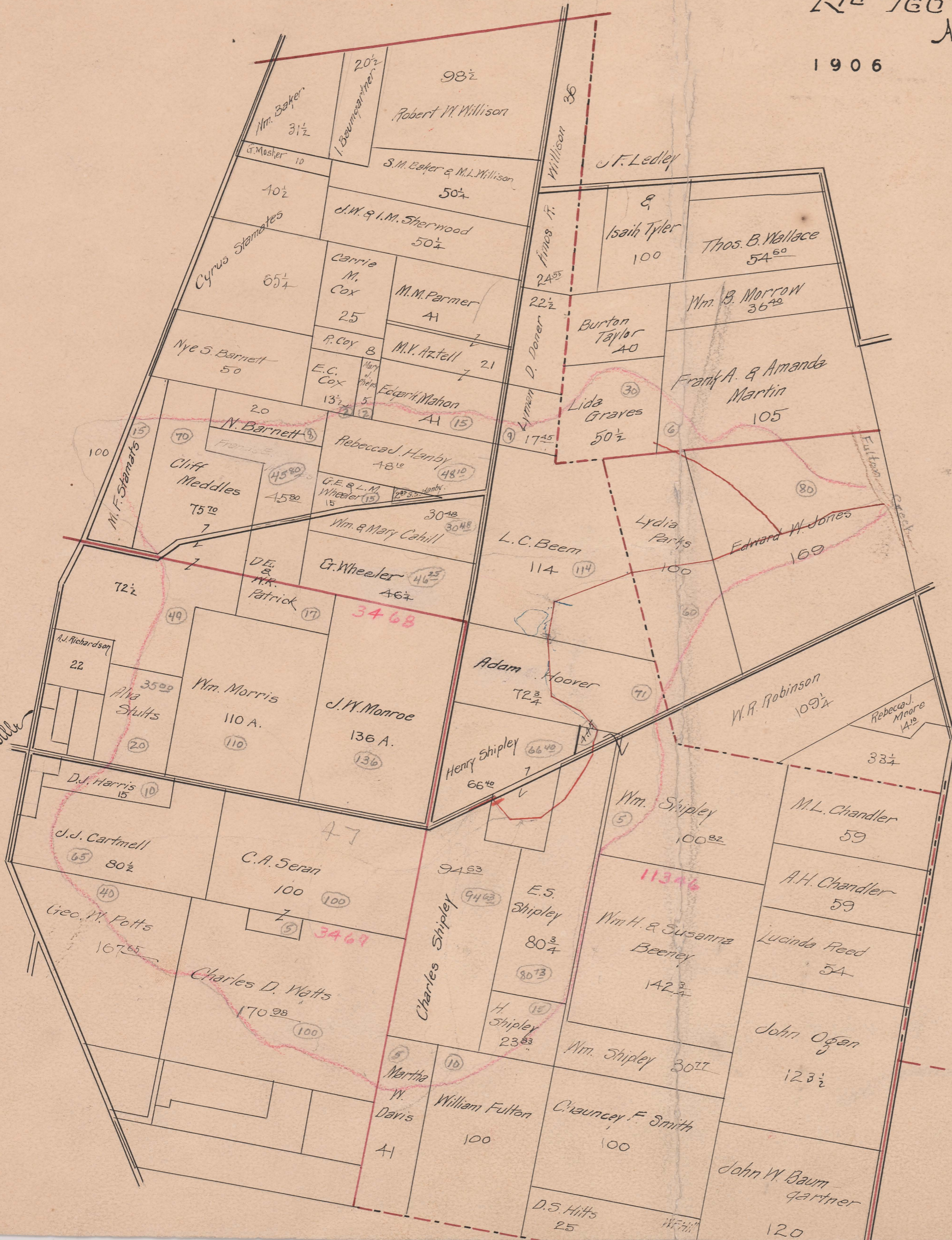
# LINDSLEY EX DITCH

SITUATED - IN -  
York & Claibourne Tps.

No 760

Alvi Graham, Engr.

1906



Begins V.M.S. 11346 - York Twp.  
Ends V.M.S. 6301 - Claibourne - Fulton Creek  
Total Acres Drained 1,603 46  
Box 363