

MORROW & CAHILL DITCH NO. 1154
YORK TWP.

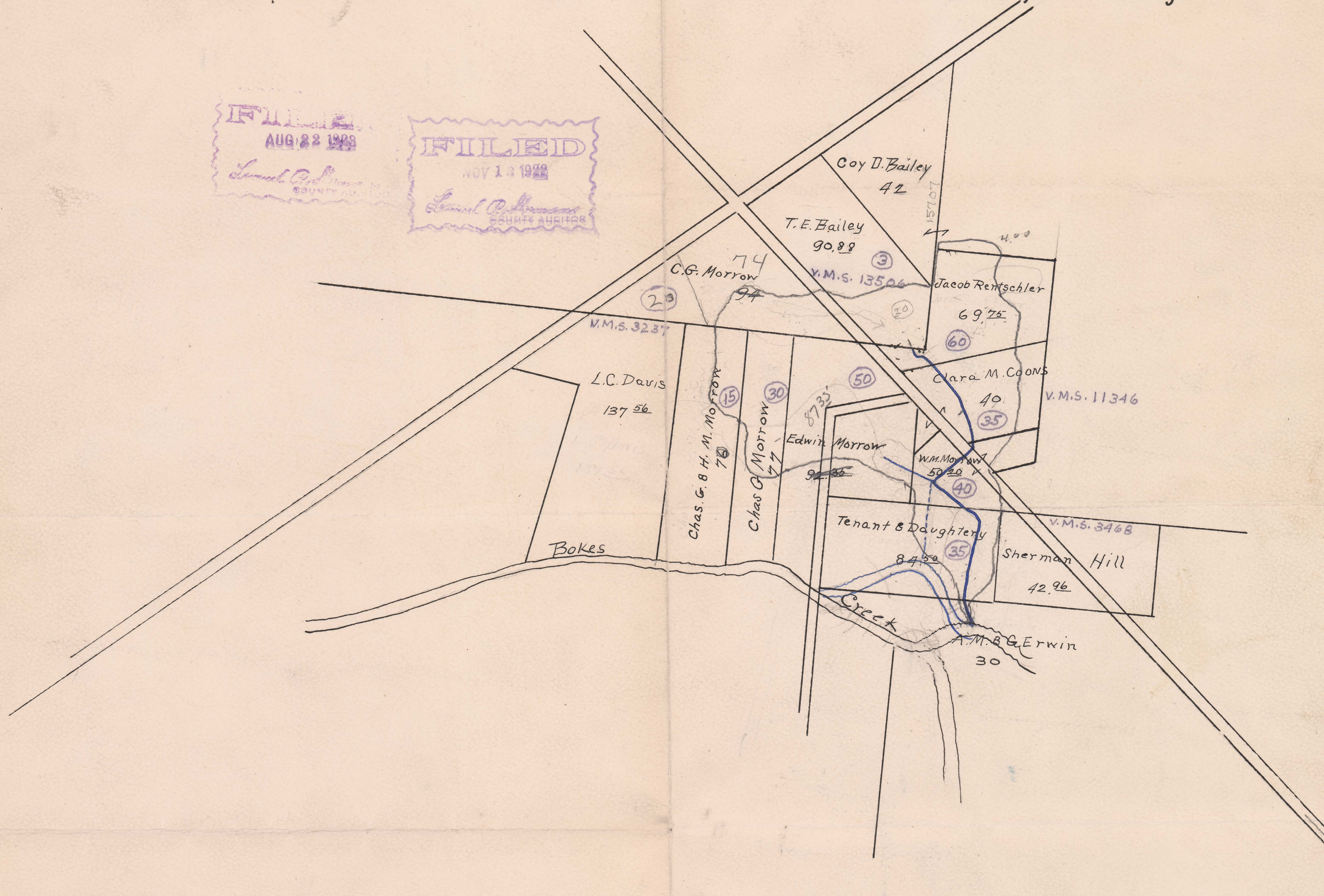
68

1922

W.P. Beightler Co. Eng.

FILED
AUG 22 1922
Leland C. Johnson
COUNTY CLERK

FILED
NOV 1 1922
Leland C. Johnson
COUNTY CLERK



Begins V.M.S. 13506
Ends V.M.S. 3468
Total Acres Drained 288⁰⁰

Box 229 Tile 10"-12"-15"-18"