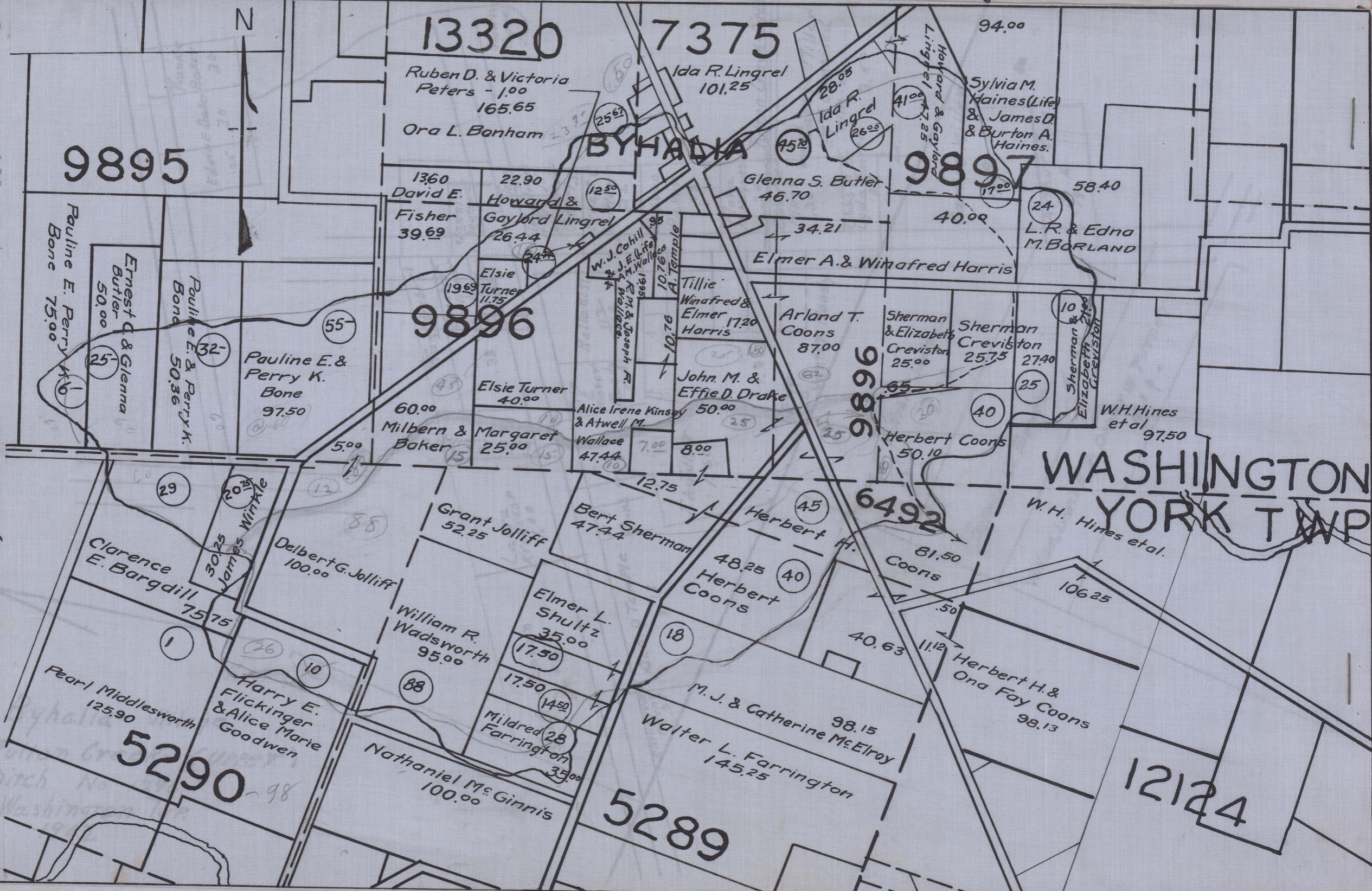


Begins W.M.S. 9895 Washing-FULTON CREEK (UPPER)
Ends W.M.S. 6492 York
Total Acres Drained
1,534.97

DITCH NO. 1296
WASHINGTON & YORK TWPS.
1942



13320

7375

9895

BYHADIA

9897

9896

9686

WASHINGTON
YORK TWP

6492

5290

5289

12124



Byhalia - Village
 Fulton Creek - (UPPER)
 Ditch No 1296
 Washington TWP.
 1942

