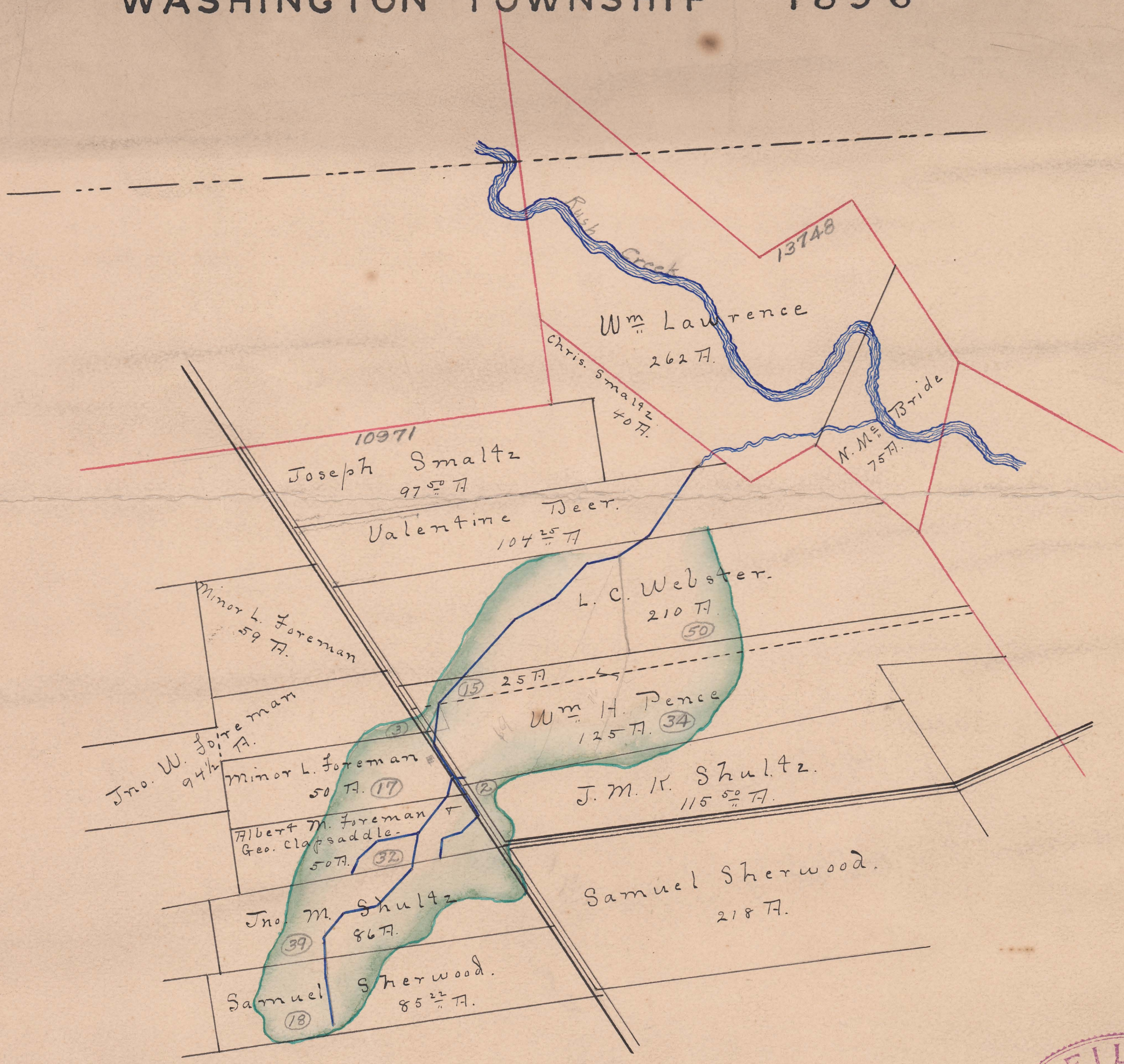


# Brush Run Ditch NO. 521

WASHINGTON TOWNSHIP 1898



FILED  
MAR 15 1898  
EDWARD M. FULLINGTON,  
AUDITOR.

Begins V.M.S. 10971  
Ends V.M.S. 13748  
Total Acres Drained 210<sup>02</sup>  
Box 256

Tile 4, 6, 8, 10, 12, 13<sup>1/2</sup> & 15