

No. 12105.

Elizabeth J. Stevenson

450⁰⁰ A.

No. 10971.

James Gibson

44⁵⁰ A.

Henry Biggs

35⁷¹ A.

Wm F. F. Poike

100⁰⁰ A.

Wm. Gibson

37⁷¹ A.

No. 9894.

H. D. Rogers

104⁵⁰ A.

Wm Gibson

101⁰⁰ A.

No. 9895

Andrew J. Middlesworth

113⁵⁰ A.

Lemuel Robinson
24⁷¹ A.

J. & T.L. Robinson
57⁷¹ A.

Henry Biggs

50⁷¹ A.

Hubb Fount
24⁷¹ A.

David R. Robinson

30⁷¹ A.

FILED

Oct. 19 1901

Ed. M. Sullivan Aud,
E

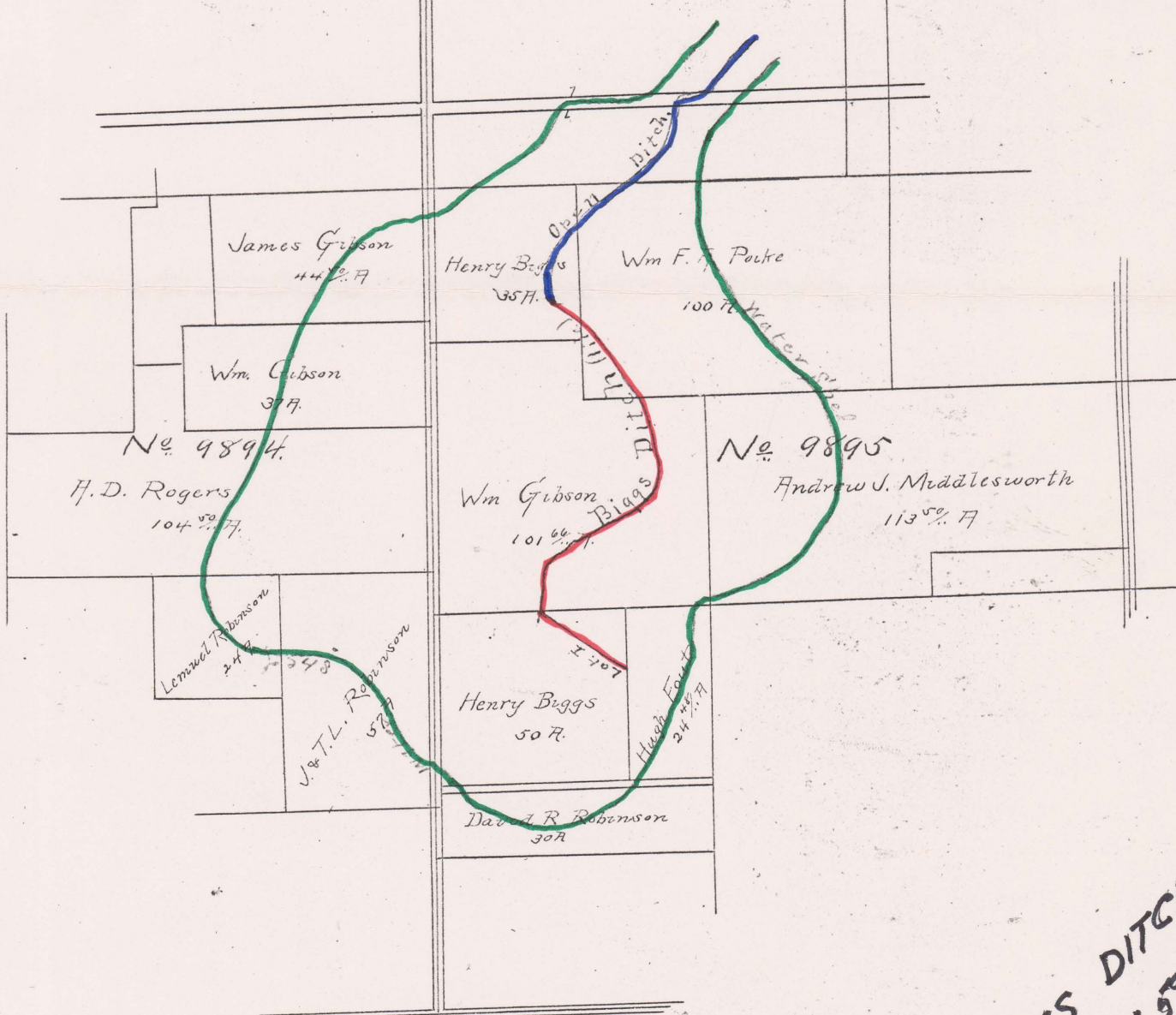
BIGGS DITCH
No. 599.

No. 12105

Elizabeth J. Stevenson

450 A

No. 10971



FILED

Oct. 19 1901

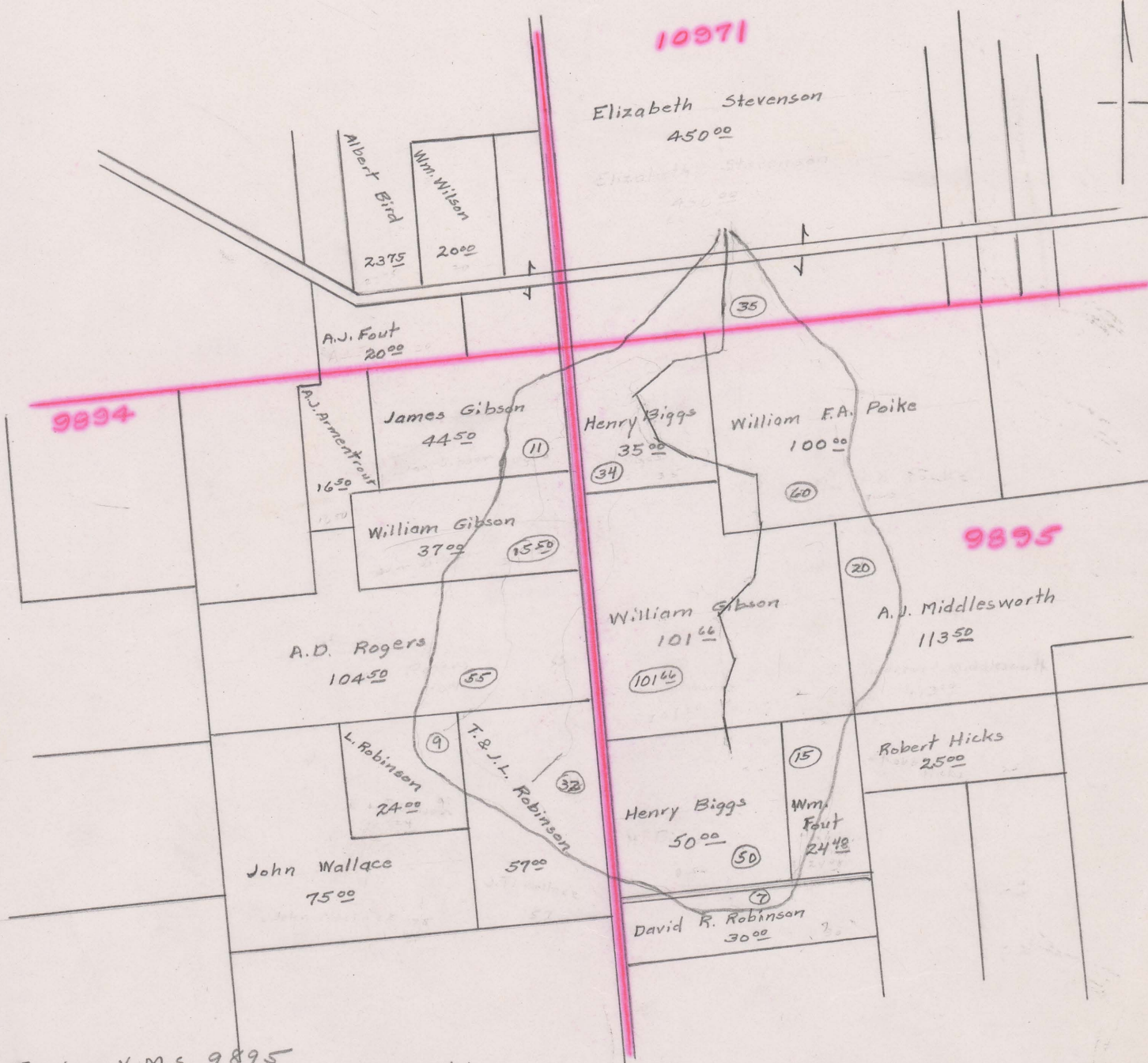
E. M. Sullivan Aud, E

Washington Twp.
12, 13 1/2" Tole & Open ditch

BIGGS DITCH
No. 579
(1901)

BIGGS DITCH NO. 599

WASHINGTON TOWNSHIP 1901



Begins V.M.S. 9895
Ends V.M.S. 10971 - Wildwood Ditch
Total Acres Drained 445 1/2

Box 290

Boundary Estimated from apportionment