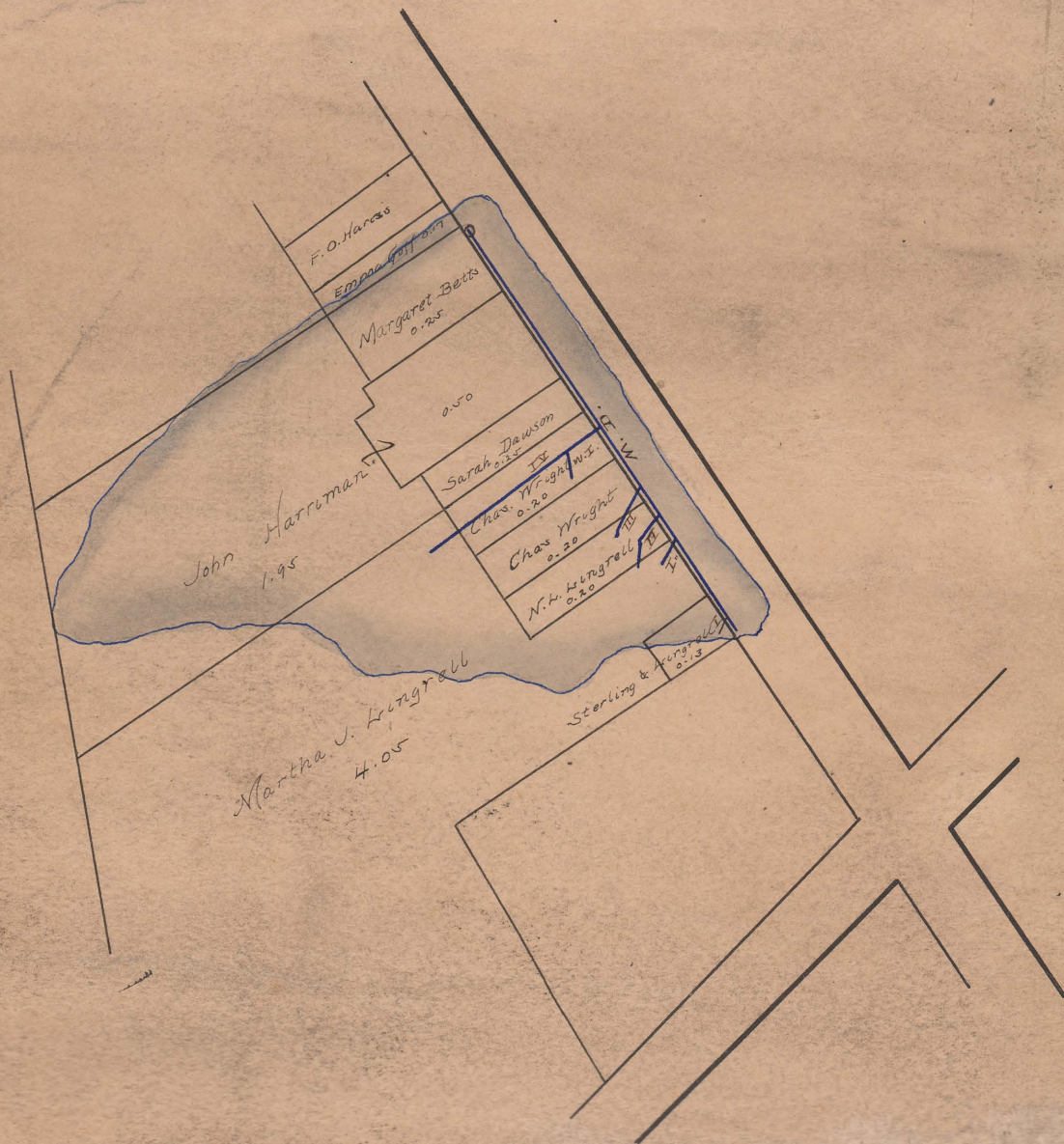


WRIGHT DITCH No 612

J.C. Kennedy,
County Surveyor.



WRIGHT DITCH No 612 (1902)

J.C. Kennedy,
County Surveyor.

Washington Twp

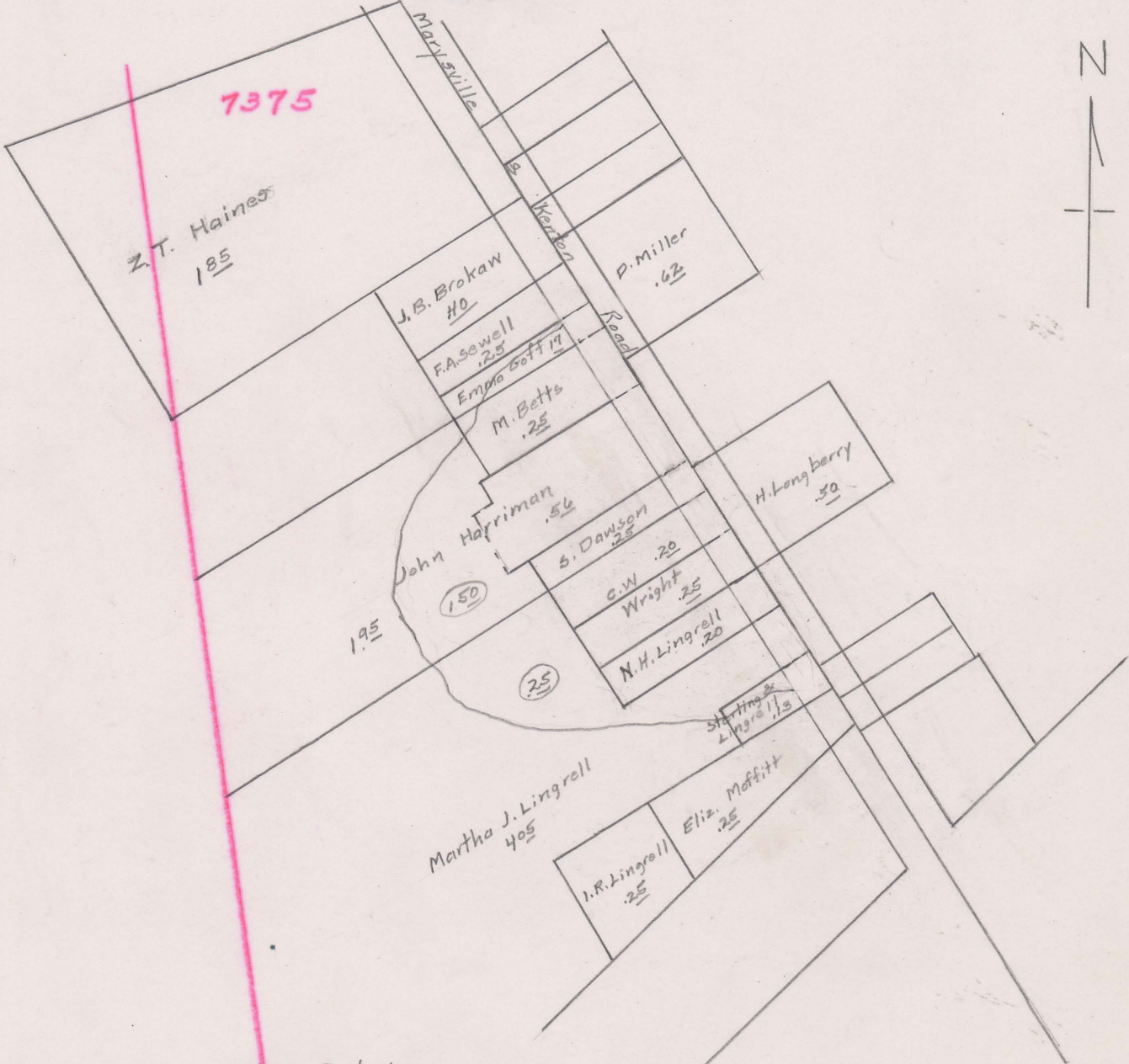
5, & 6" Tile



WRIGHT DITCH NO. 612

BYHALIA - WASHINGTON TOWNSHIP

1902



Begins V.M.S. 7375 - Village Byhalia
Ends V.M.S. 7375 - Village Byhalia - Fulton Creek
Total Acres Drained 3.46 + Parts
Box 290

Boundary Estimated from apportionment