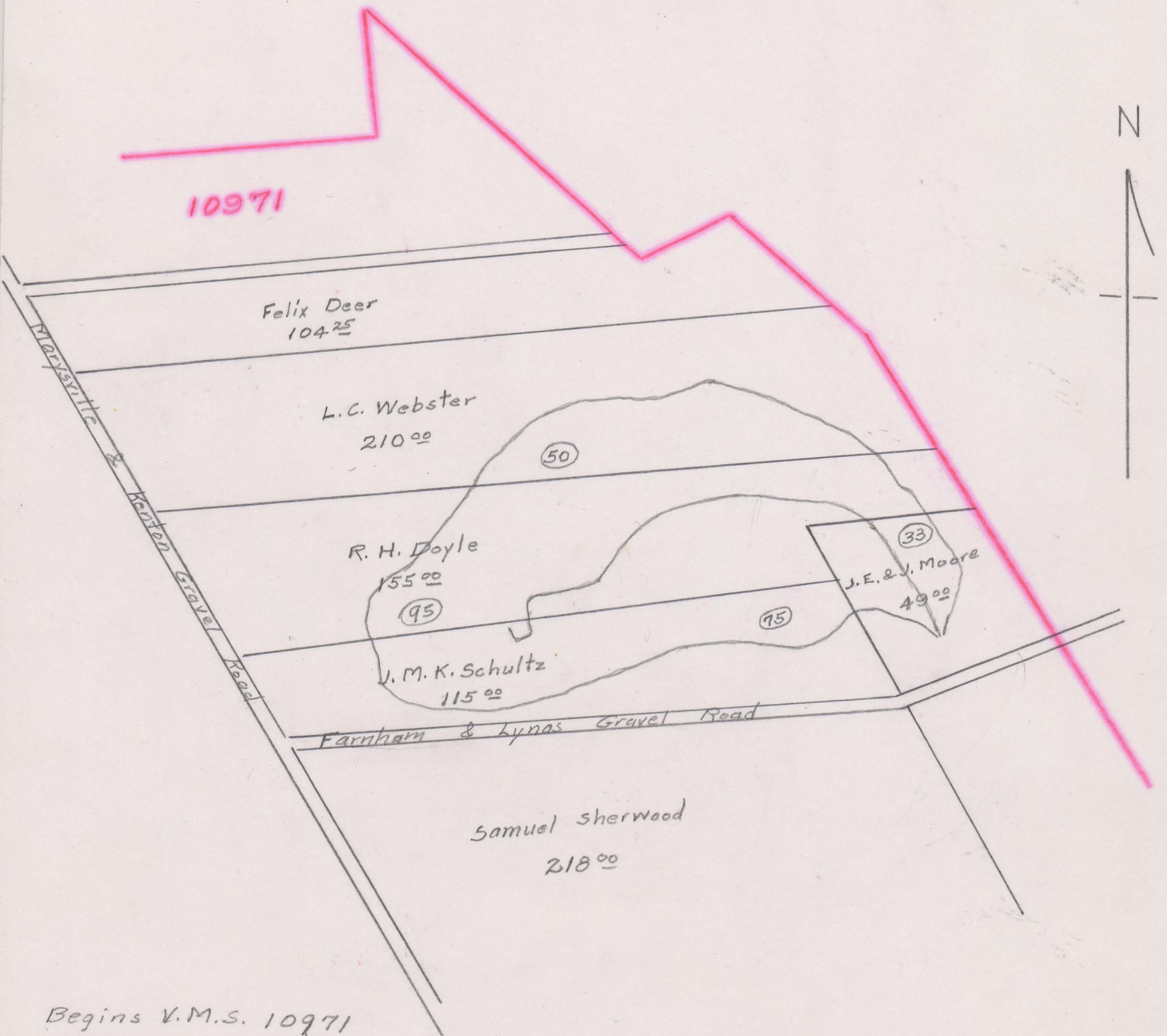


DOYLE DITCH NO. 669  
WASHINGTON TOWNSHIP 1903

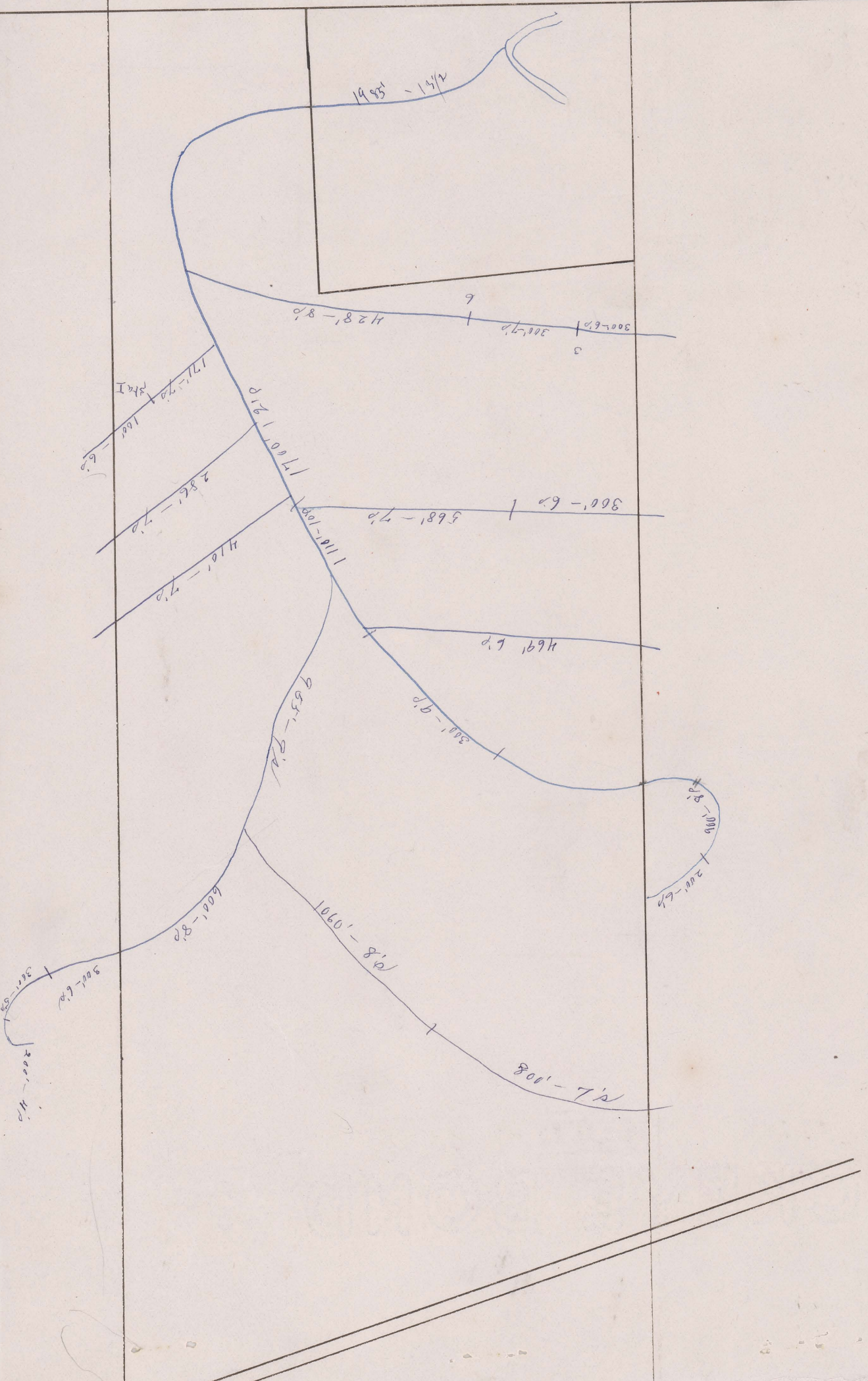


Begins V.M.S. 10971

Ends V.M.S. 10971 - Sherwood Ditch

Total Acres Drained 253<sup>00</sup>

Box 294 (See papers for water charge) Boundary Estimated from apportionment



19 35' - 1 1/2'

300' - 6 1/2' | 300' - 7 1/2' | 428' - 8 1/2' | 6

Sta I

171' - 7 1/2' | 160' - 6 1/2'

1700' - 2 1/2'

285' - 7 1/2'

300' - 6 1/2' | 568' - 7 1/2'

410' - 7 1/2'

110' - 10 1/2'

469' - 6 1/2'

300' - 9 1/2'

95' - 8 1/2'

200' - 6 1/2' | 300' - 4 1/2'

600' - 8 1/2'

1060' - 8 1/2'

800' - 7 1/2'

300' - 6 1/2' | 300' - 4 1/2'