

PLAT OF

GILES DITCH

— WASHINGTON TOWNSHIP —

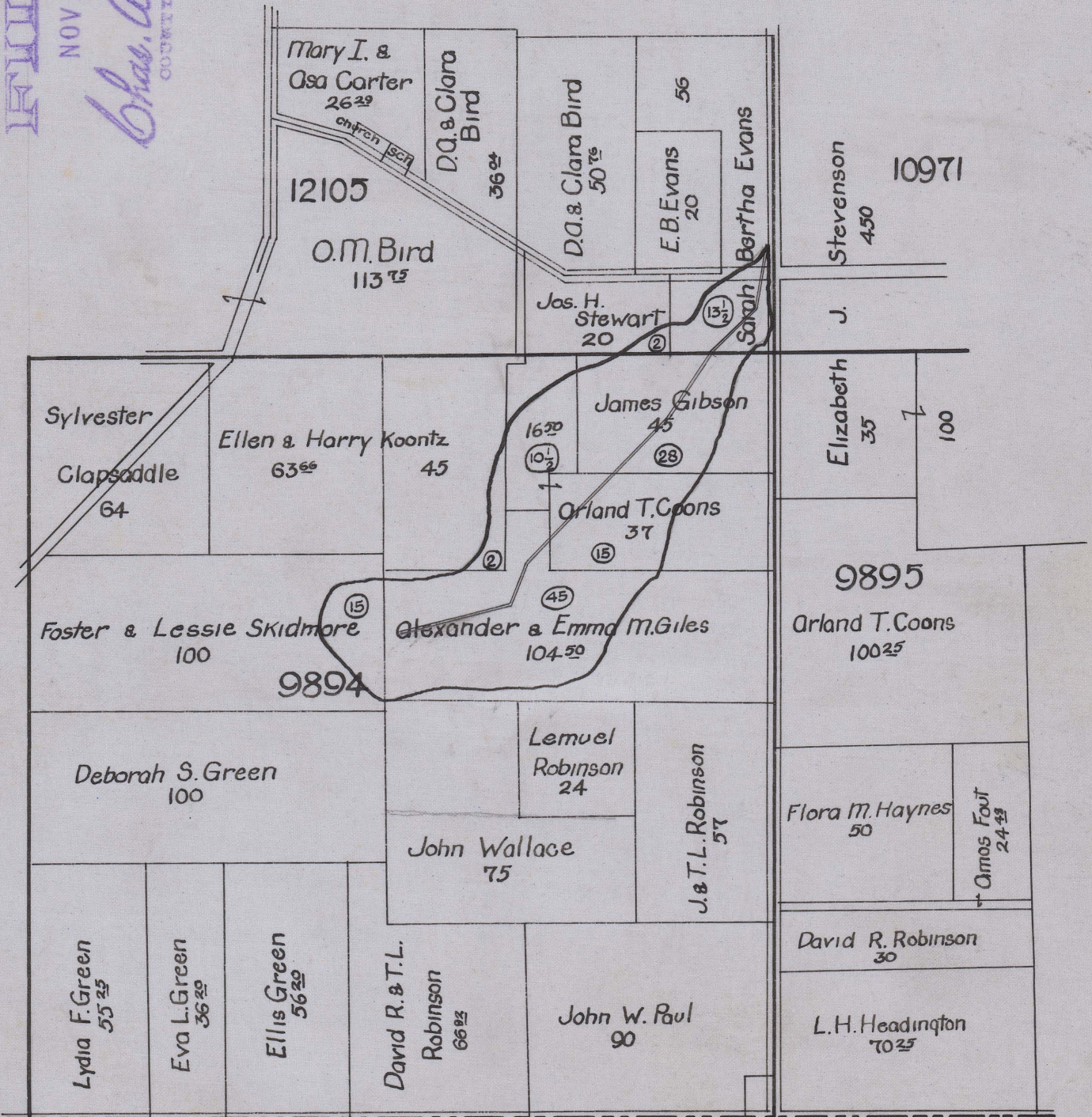
No. 1042

1914-15

FILED

NOV 23 1914

Chas. A. Morlock
COUNTY AUDITOR.



Begins V.M.S. 9894
 Ends V.M.S. 12105 — Spring Branch Ditch
 Total Acres Drained 132.00

Box 400