

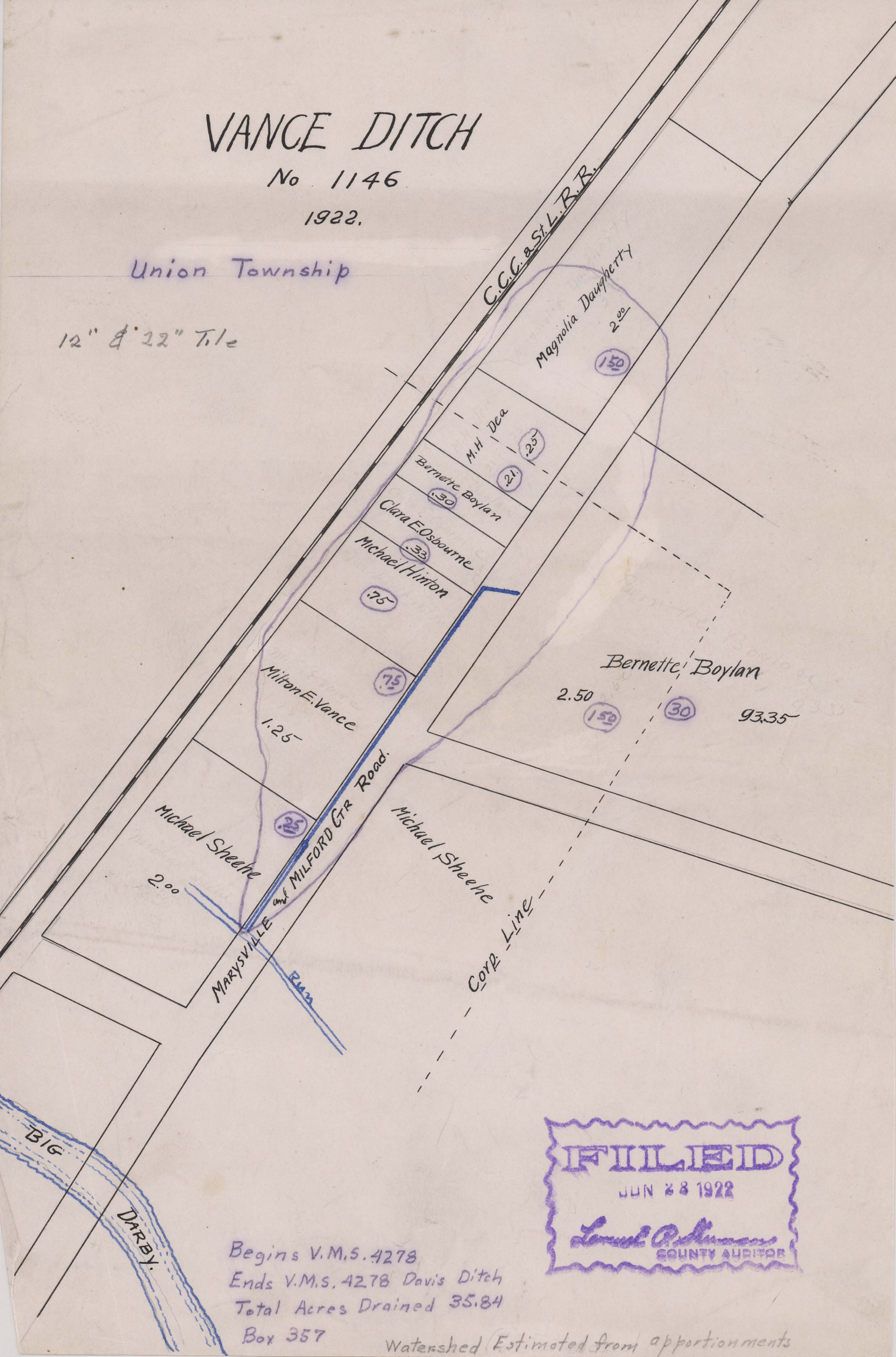
VANCE DITCH

No 1146

1922.

Union Township

12" & 22" Tile



Begins V.M.S. 4278
Ends V.M.S. 4278 Davis Ditch
Total Acres Drained 35.84
Box 357

Watershed Estimated from apportionments

FILED
JUN 28 1922
Leland Robinson
COUNTY AUDITOR