

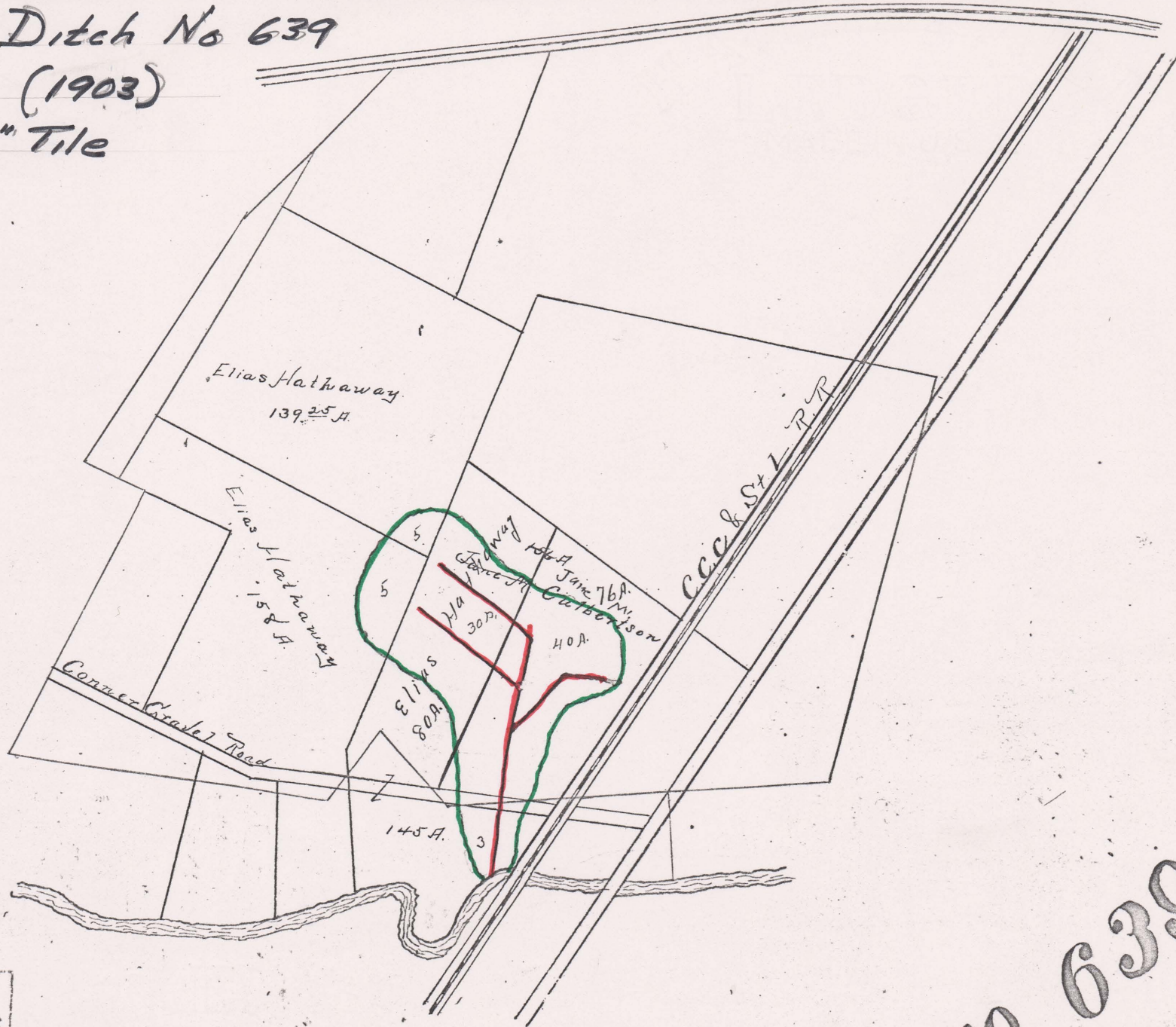
HATHAWAY DITCH



FILED
DWIGHT B. EDWARDS
1908
28
1908
COUNTY AUDITOR
UNION COUNTY, O.

No. 639

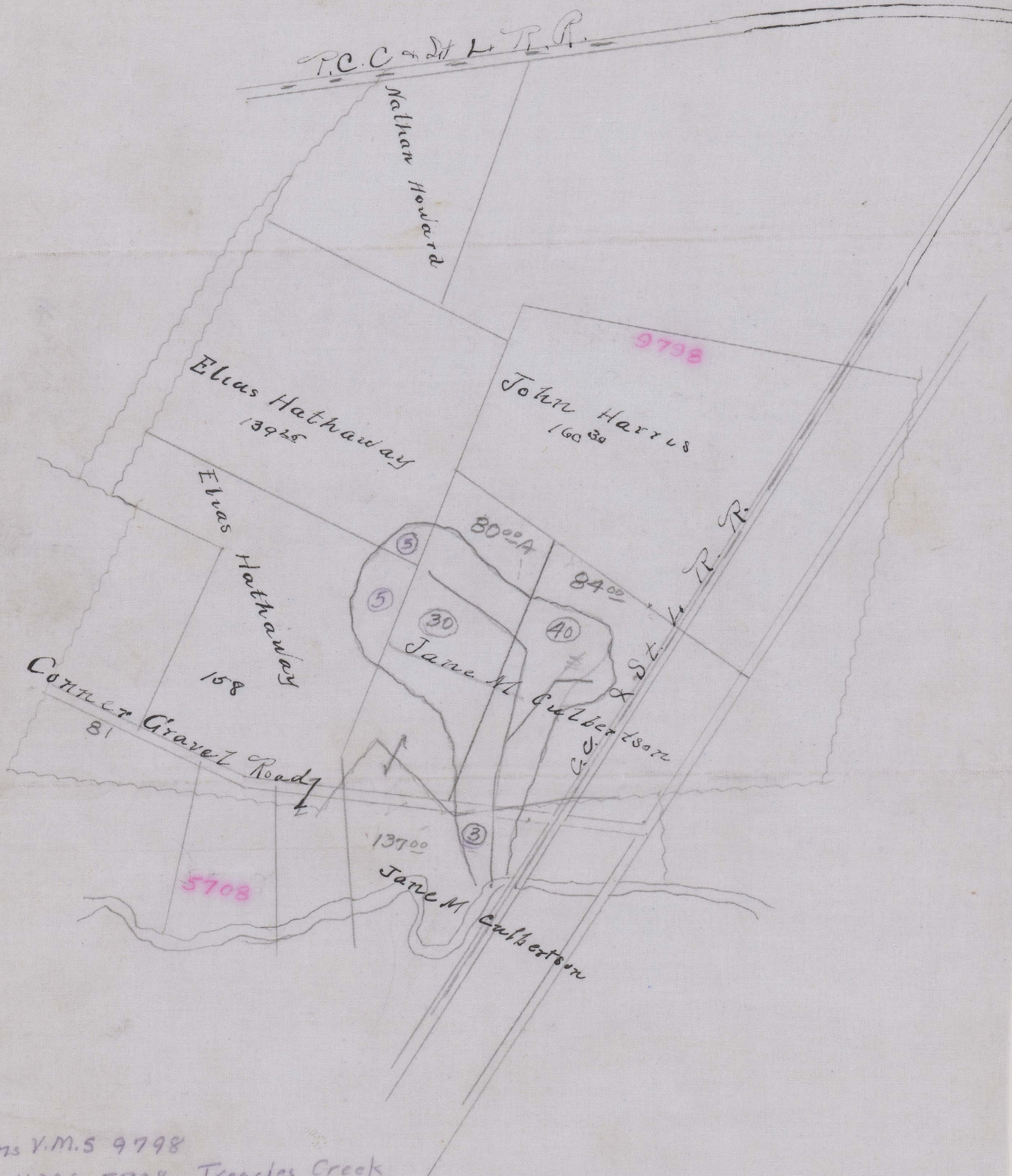
Hatheway Ditch No 639
Union Twp (1903)
6, 7, 8, 9, & 10" Tile



FILED
D WIGHT B. EDWARDS
25
28
1903
COUNTY AUDITOR
UNION COUNTY

No. 639

Hathaway — NO. 639
UNION TOWNSHIP 1903



Begins V.M.S. 9798
Ends V.M.S. 5708 - Treacles Creek
Total Acres Drained 8300

Box 292