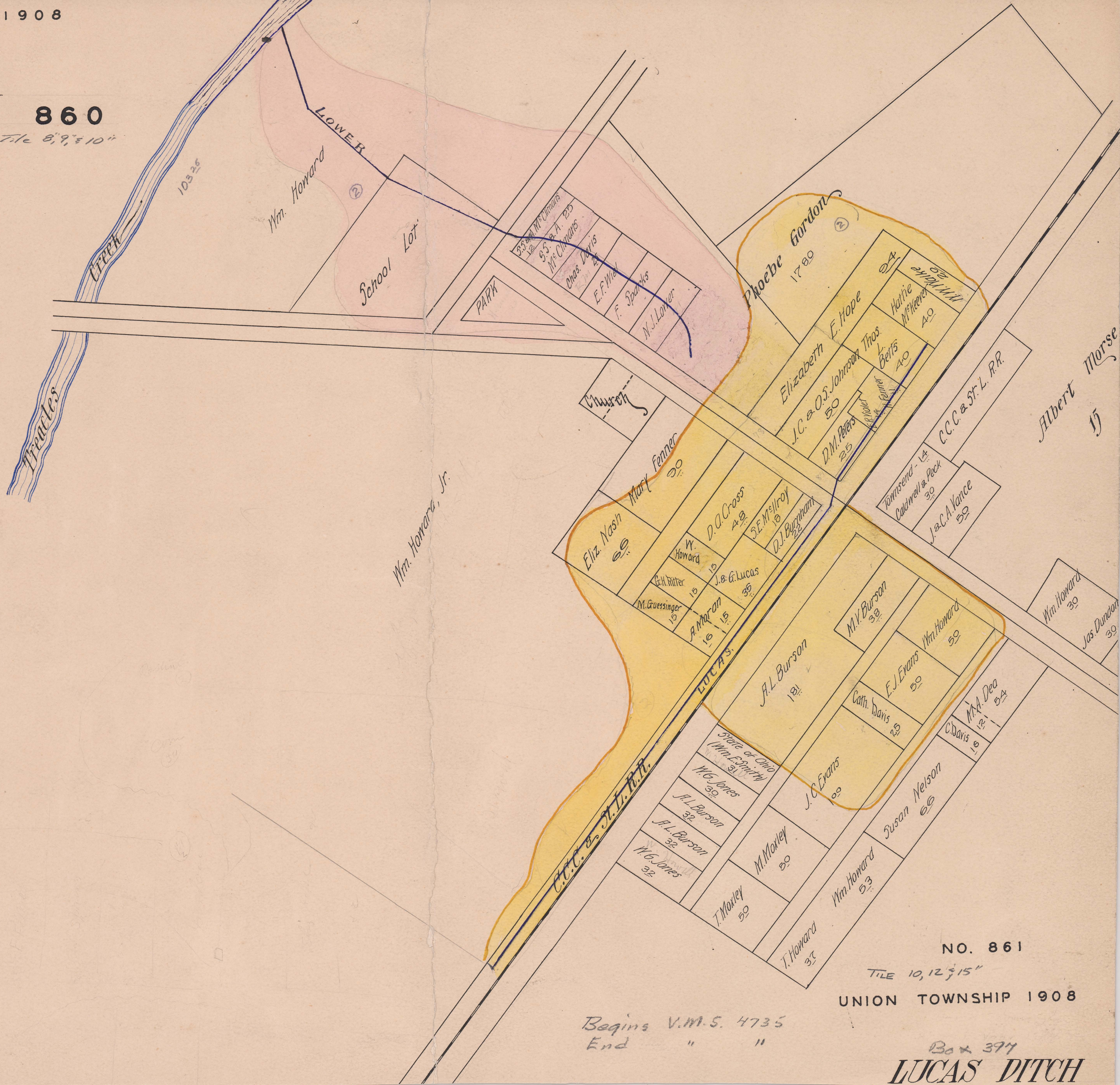


LOWER DITCH 860

Begins V.M.S. 4735
Ends V.M.S. 4735-Treacles Creek
Box 397

LED
T.B. EDWARDS
OCT
3
1908
TOWN AUDITOR
COUNTY



103.25

Wm. Howard

School Lot

PARK

Phoebe Gordon
17.80

Church

Mary Fenner
50

Eliz. Nash
60

D.A. Cross
40

SE. McIlroy
10

D.J. Burgham
20

Tomsond - 14
Caldwell & Peck
30

J. & C.A. Vance
50

C.C.C. & St. L. R.R.

Albert Morse
15

Wm. Howard, Jr.

W. Howard
15

G.H. Ritter
15

M. Guessinger
15

A. Marston
15

J. & G. Lucas
35

M.V. Burson
30

Wm. Howard
30

Jas. Dundon
30

J.L. Burson
10

E.J. Evans
50

Wm. Howard
50

Cath. Davis
25

M.A. Dea
15

C. Davis
15

State of Ohio
(Wm. Smith)
21

W.G. Jones
30

J.L. Burson
32

J.C. Evans
100

M. Nelson
60

Susan Nelson
60

J.L. Burson
32

W.G. Jones
32

M. Moxley
50

J.C. Evans
100

Wm. Howard
53

T. Moxley
50

T. Howard
37

NO. 861

TILE 10, 12, 15"

UNION TOWNSHIP 1908

Begins V.M.S. 4735
End " "

Box 397
LUCAS DITCH