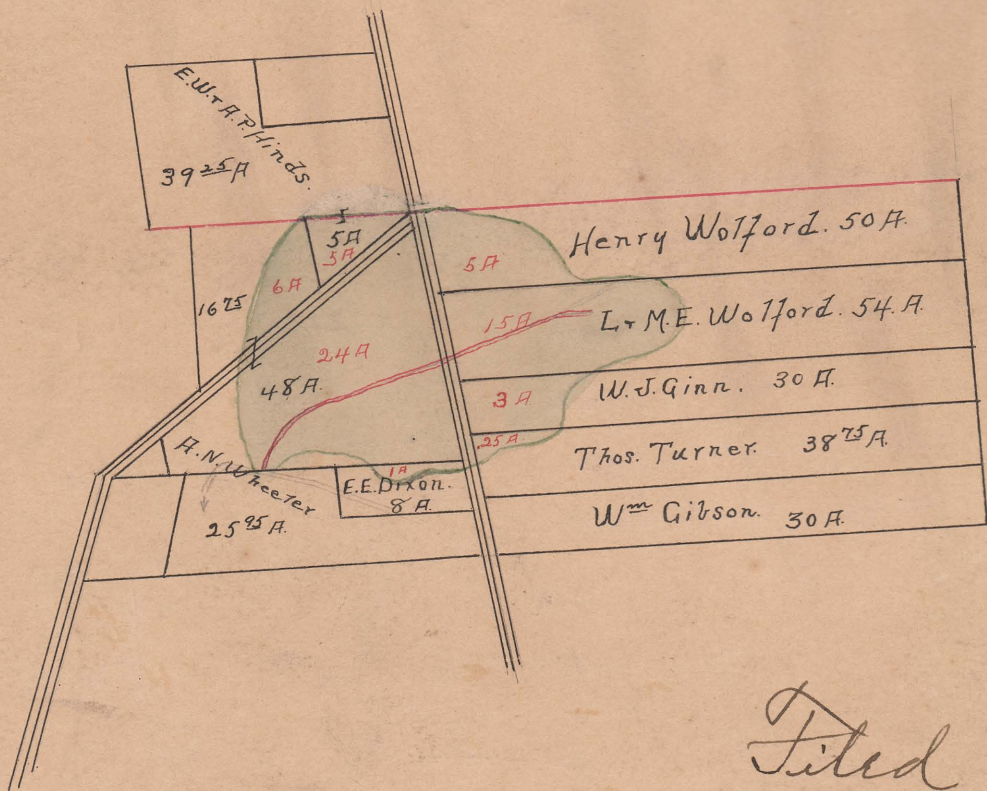
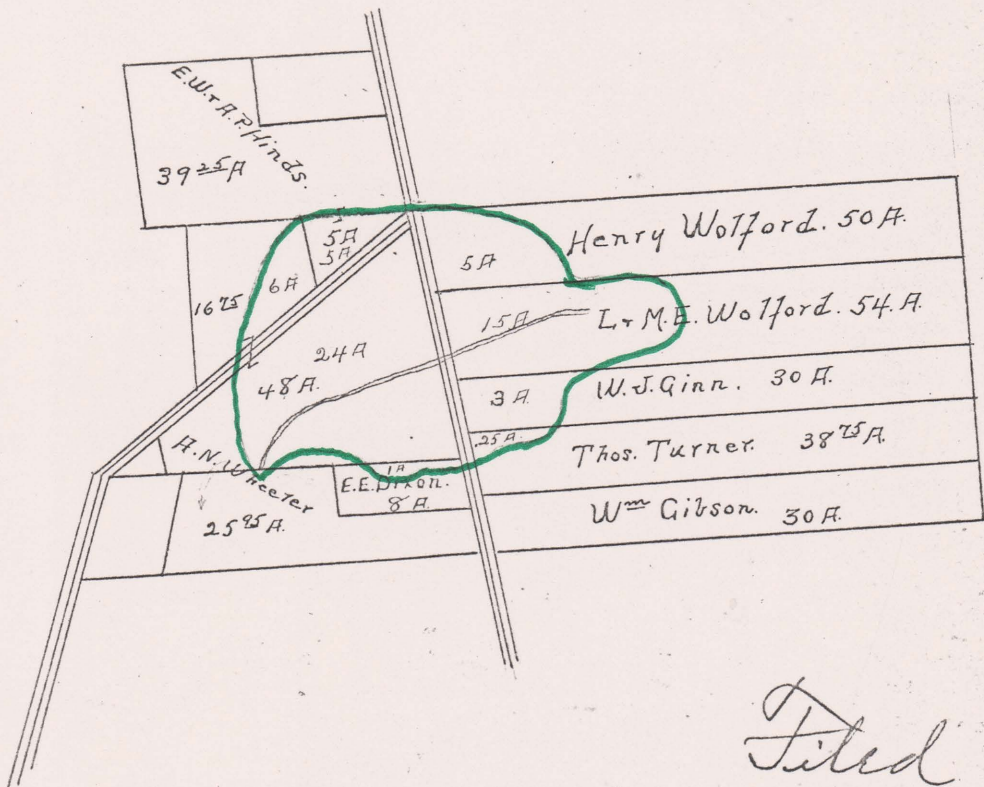


Wolford Ditch No. 620.



Filed Nov. 1st 1902
Dwight B. Edwards
Auditor.

Wolford Ditch No. 620. (1902)
 Taylor Twp.
 4, & 7" Tile

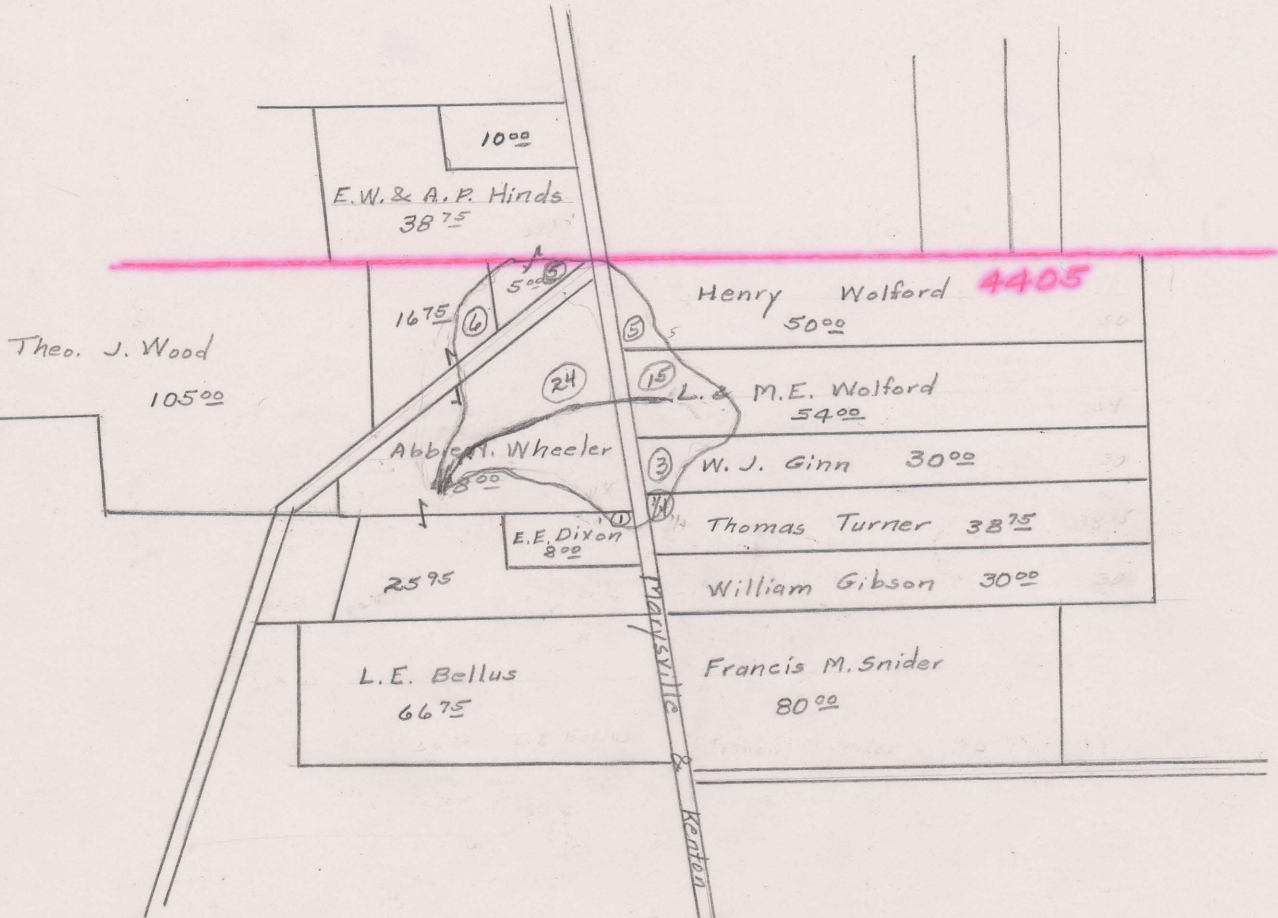


Filed Nov. 1 1902
 Dwight B. Edwards
 Auditor.

WOLFORD DITCH NO. 620

TAYLOR TOWNSHIP 1902

N



Begins V.M.S. 4405
 Ends V.M.S. 4405 - Open Ditch
 Total Acres Drained 59²⁵

Box 291

Boundary Estimated from apportionment.

see Staley Ditch No. 1205