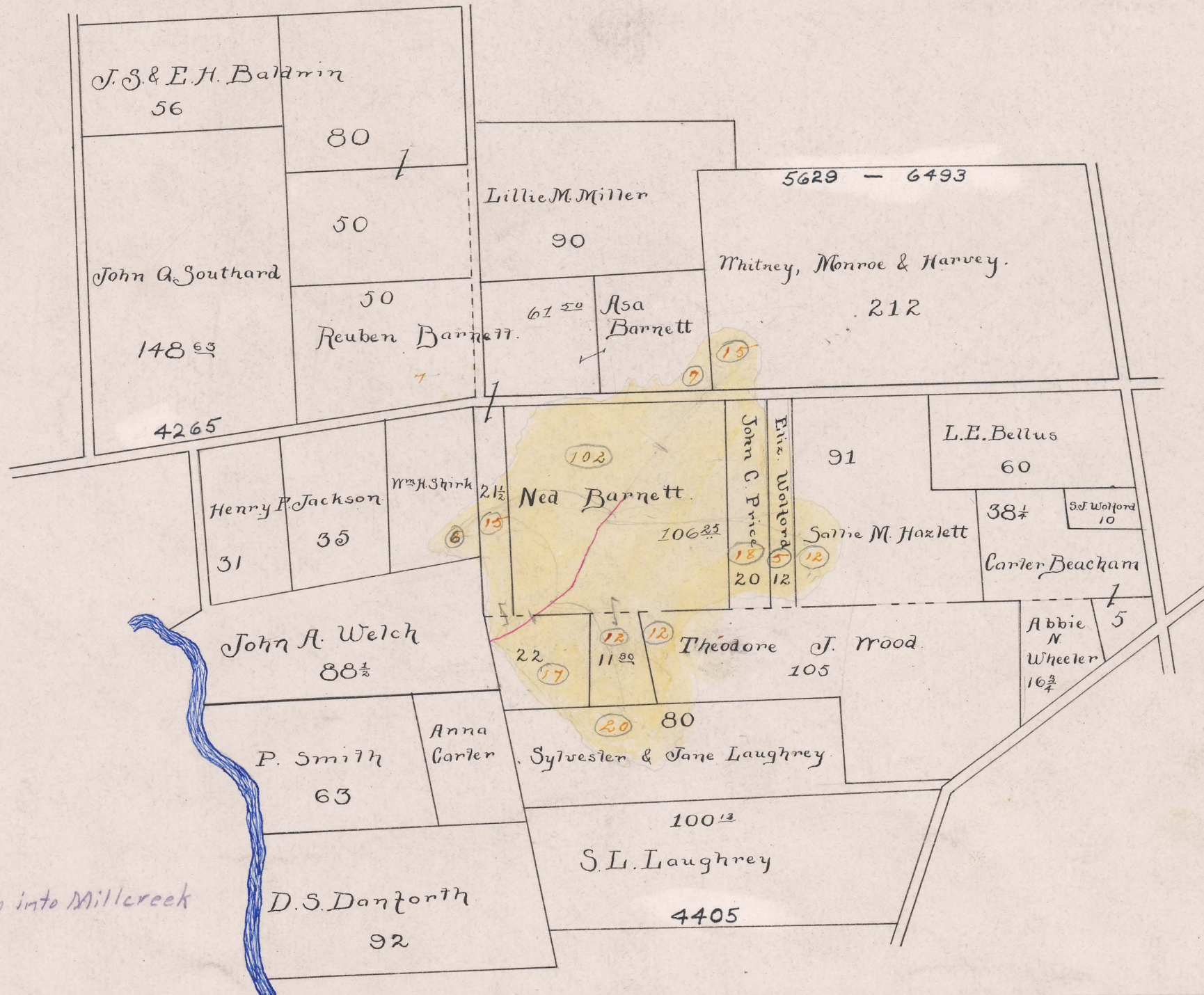


CARTER DITCH NO. 803

TAYLOR TOWNSHIP.

1907

FILED
 DWIGHT R. EDWARDS
 JAN 17 1907
 COUNTY AUDITOR



Begins V.M.S. 5629-6493
 Ends V.M.S. 4405 - Open Ditch into Millcreek
 Total Acres Drained 241 ⁰⁰
 Box 366