

FILED - DECEMBER 30, 1940

5629

John W. & Ida M. Wheelen
70°

Leroy & Elizabeth Ferrell
66°

A.B. Green
35°

Retta Barnett
106.25

N.W. Mut. Life Ins Co
91°

H.E. Parish
60 A.

A.B. & R.D. Green
92°

Prudential Ins. Co. Amc.
43°

John C. Price
20°

J.C. Price & Effie Jenkins 12°

12° Harry D. Smith
103°

F.D. Smith
63°

4265

Frank D.M. Wilson
122°

John L. Laughrey Etal.
247.63

4405

Ruth A & Orrin H Shaw
42.80

Roy Ruffner
36.45

Harry H Shaw
73°

Burl & Donna P. Bellville
47.25

4264

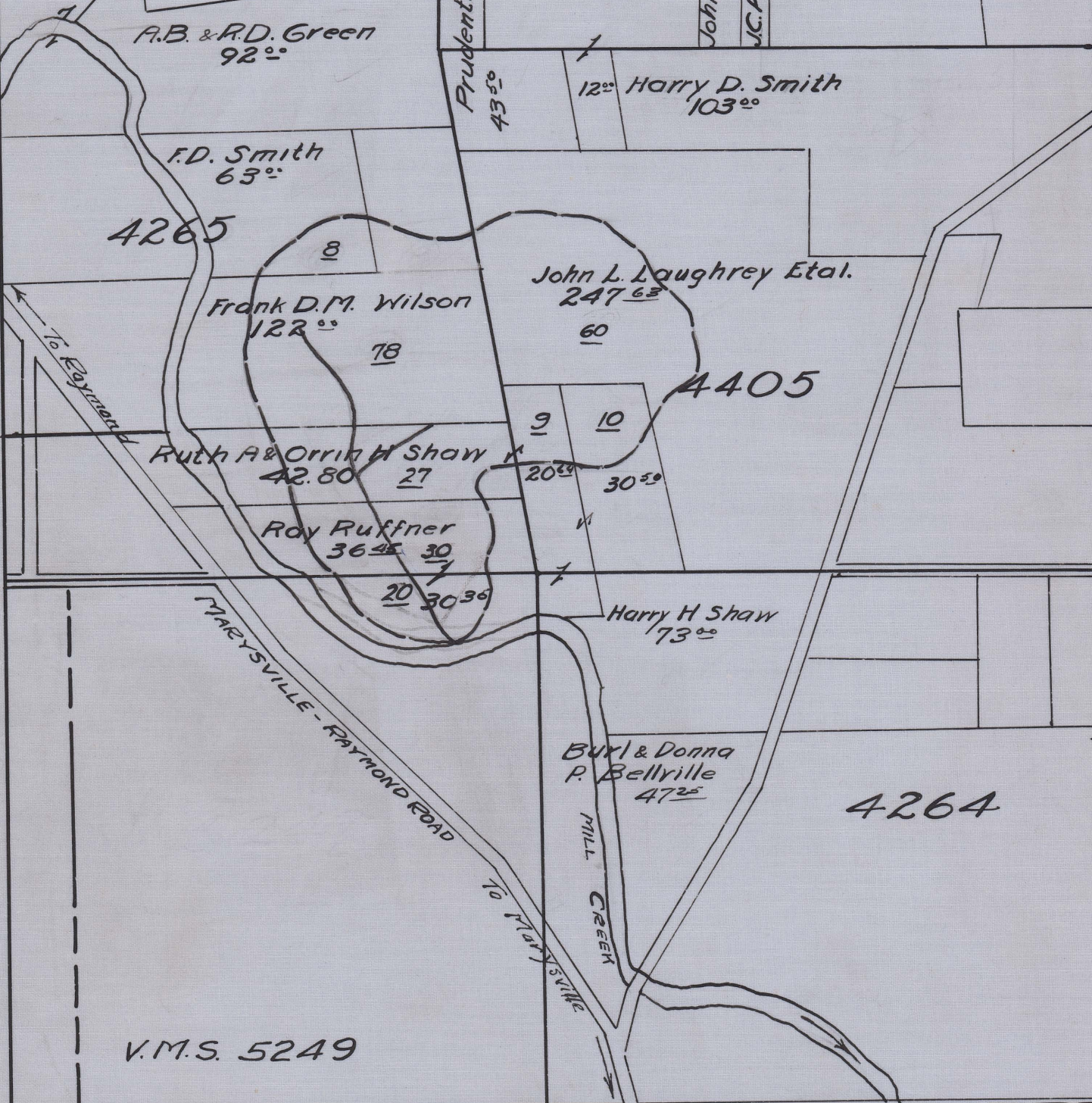
V.M.S. 5249

RUFFNER COUNTY DITCH
No 1287
TAYLOR TOWNSHIP
1940-1941

Begins V.M.S. 4265
Ends V.M.S. 5249
Total Acres Drained 242.00

Box No. 521

Title 8", 12", & 15"



5629

John W & Ida M Wheelen
70°

Leroy & Elizabeth Ferrell
66°

A.B Green
35°

Retta Barnett
106.25

John C. Price
20°

M.C. Price & Effie Jenkins 12°

N.W. Mut. Life Ins Co
91°

H.E. Parish
60 A

A.B & R.D. Green
92°

Prudential Ins Co. Finic.
43°

12° Harry D. Smith
103°

F.D. Smith
63°

4265

Frank D.M. Wilson
122°

John L. Laughrey Etal.
247.63

4405

Ruth A & Orrin H Shaw
42.80

20°

30°

Ray Ruffner
36.45

30°

Harry H Shaw
73°

Burl & Donna P. Bellville
47°

4264

RUFFNER COUNTY DITCH
No 1287
TAYLOR TOWNSHIP
1940