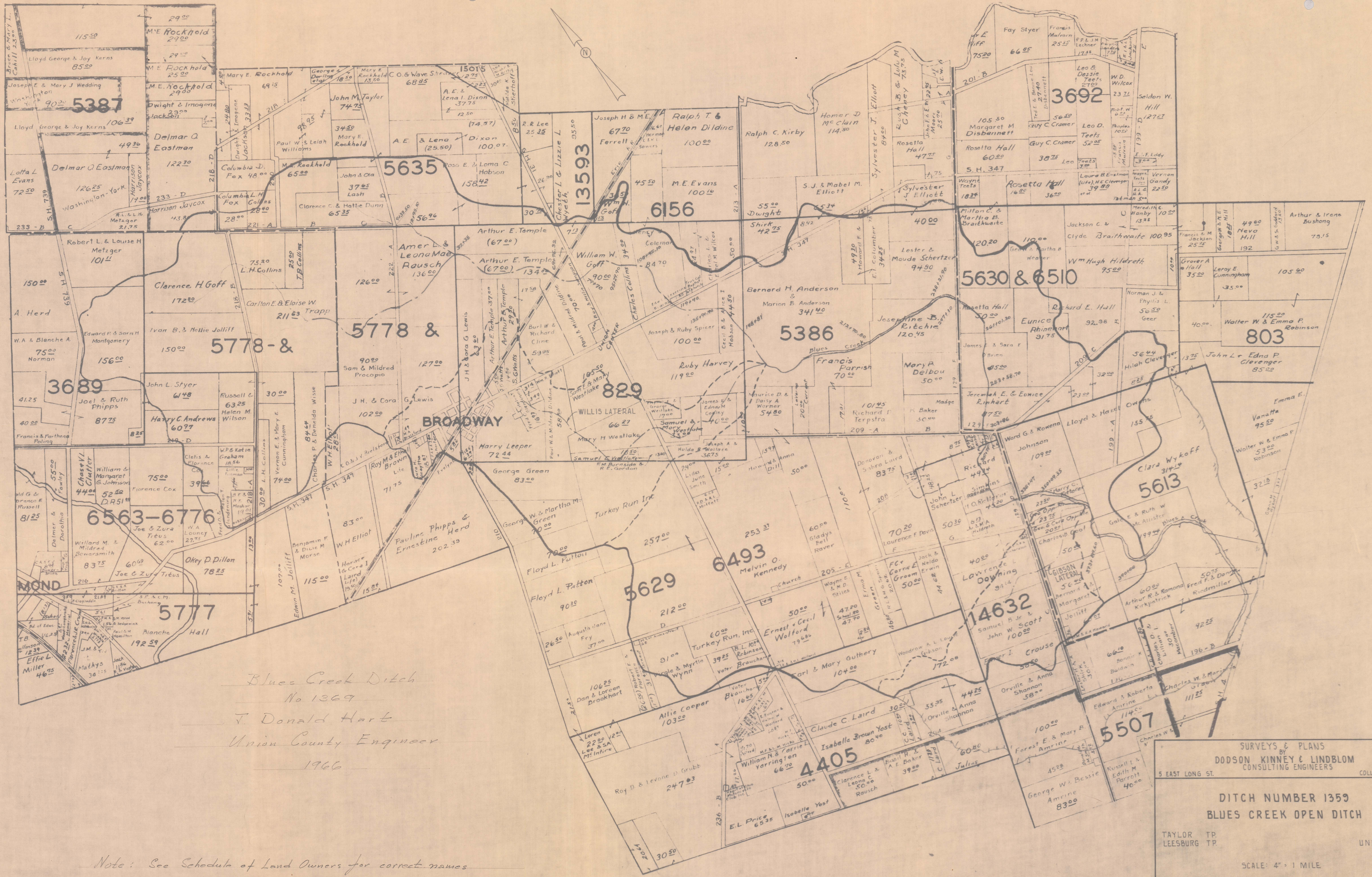


DITCH NUMBER 1359
BLUES CREEK OPEN DITCH



*Blues Creek Ditch
No 1369
J. Donald Hart
Union County Engineer
1966*

SURVEYS & PLANS
BY
DODSON KINNEY & LINDBLOM
CONSULTING ENGINEERS
5 EAST LONG ST. COLUMBUS, OHIO

DITCH NUMBER 1359
BLUES CREEK OPEN DITCH

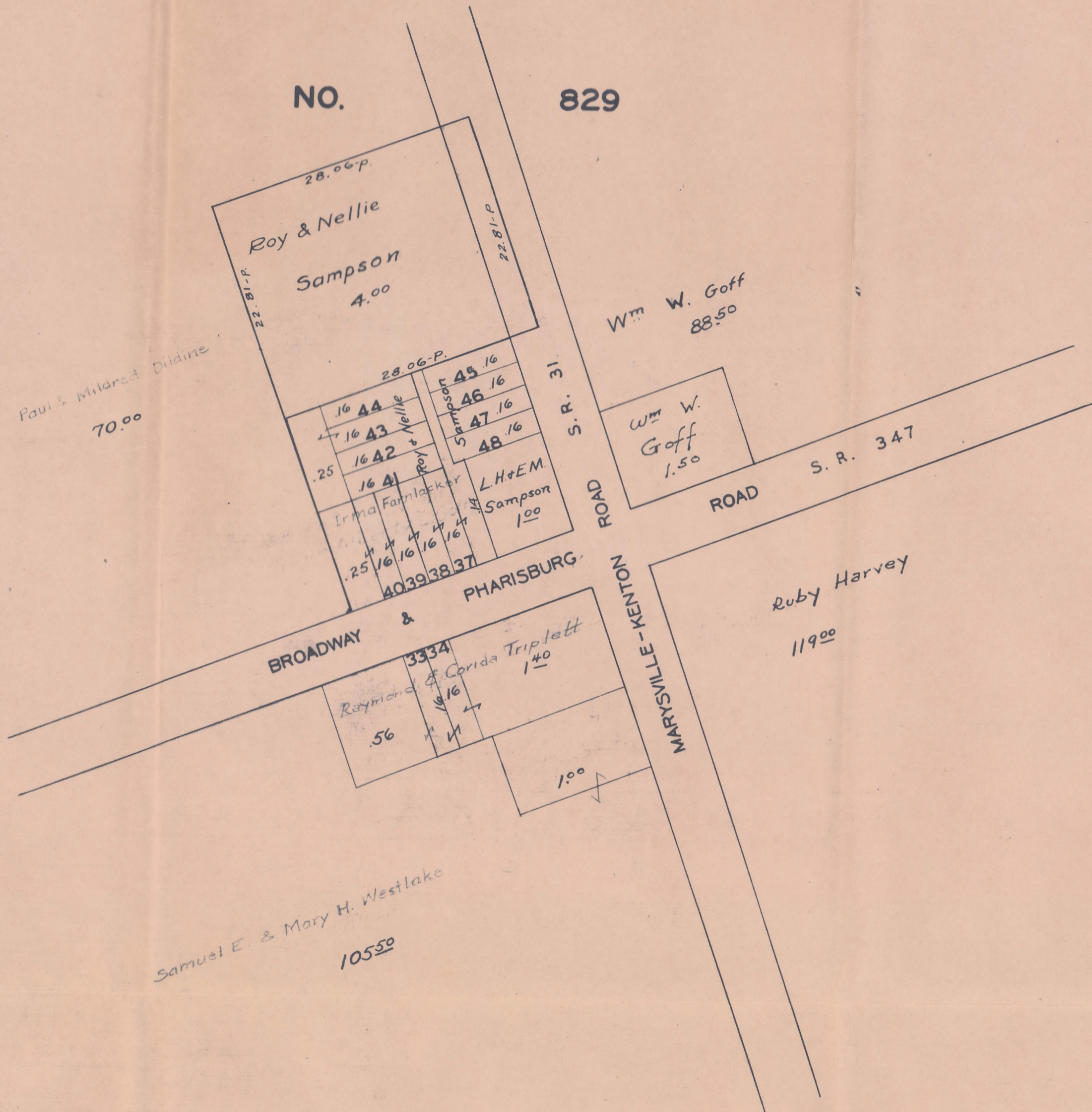
TAYLOR TP.
LEESBURG TP. UNION CO.

SCALE: 4" = 1 MILE
REPORT OF COUNTY ENGINEER DATED:

Note: See Schedule of Land Owners for correct names

UNION CENTER "BROADWAY CORNERS" TAYLOR TWP.

SCALE-10 POLES-1 INCH

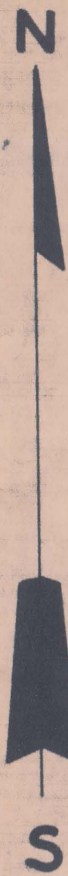


Blues Creek Ditch # 1369

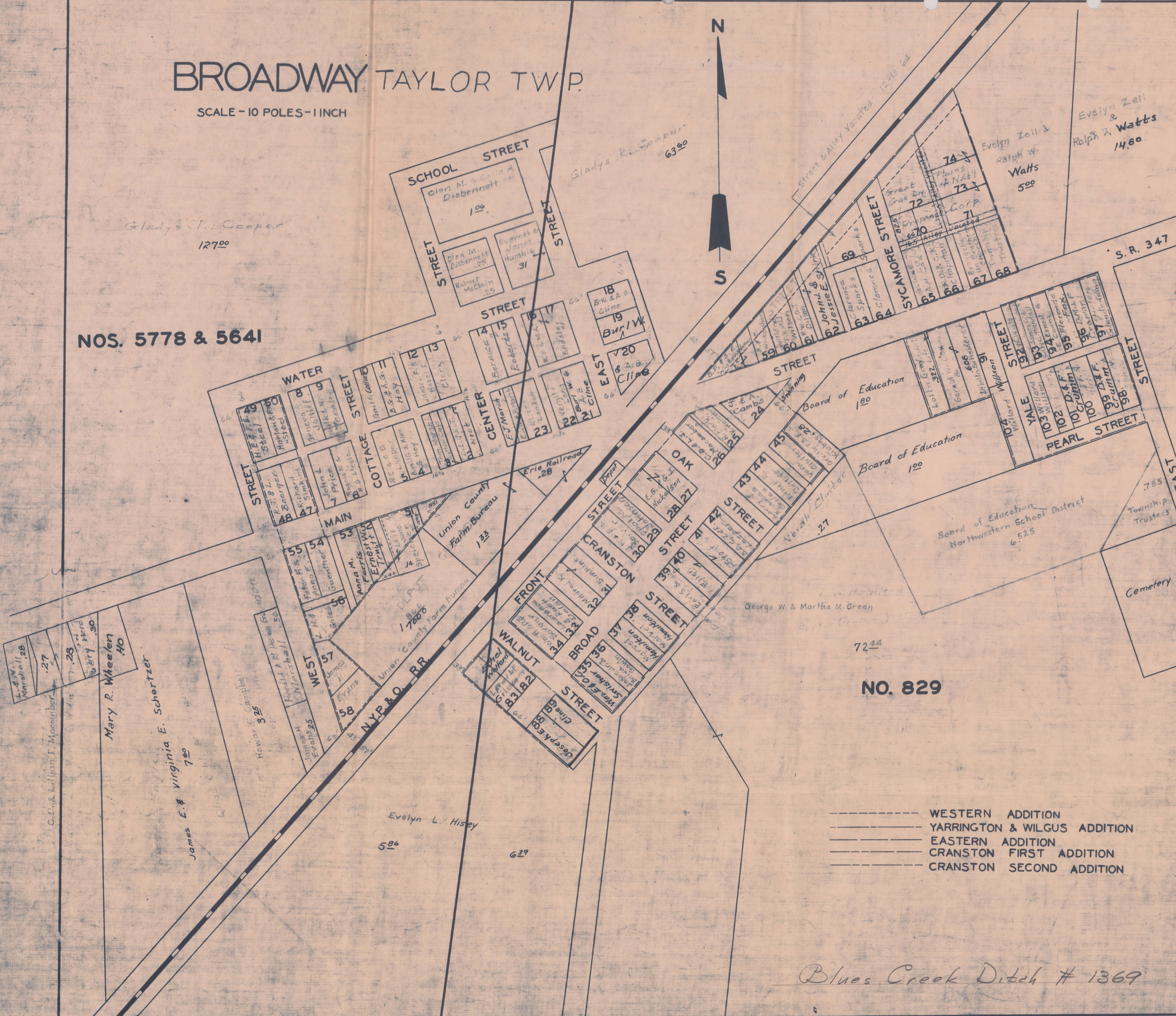
Corrected Jan. 25, 1966

BROADWAY TAYLOR TWP.

SCALE - 10 POLES - 1 INCH



NOS. 5778 & 5641



- WESTERN ADDITION
- ===== YARRINGTON & WILGUS ADDITION
- EASTERN ADDITION
- CRANSTON FIRST ADDITION
- CRANSTON SECOND ADDITION

Blues Creek Ditch # 1369

Corrected Jan 25 1966