

CHILDREN'S HOME DITCH

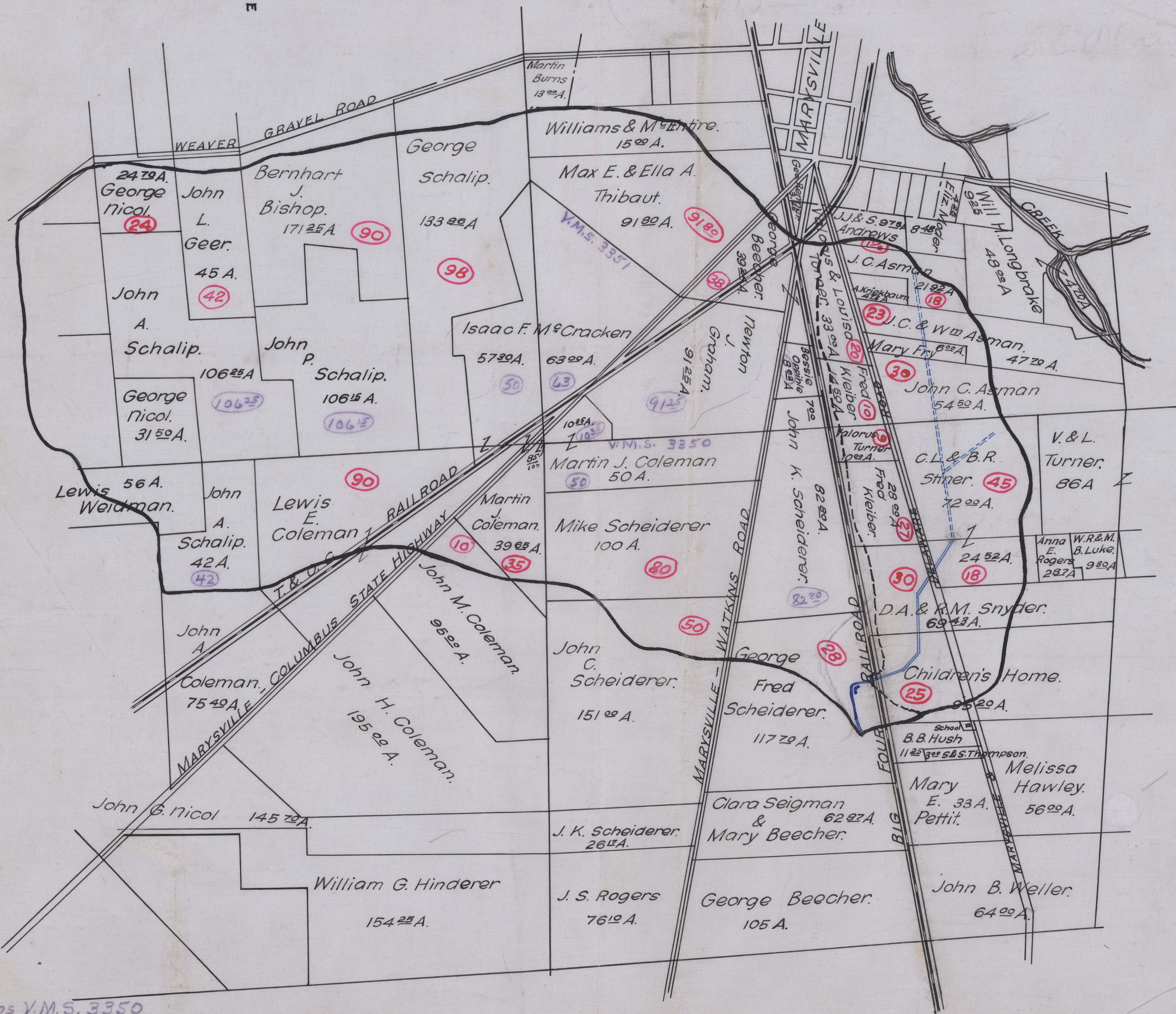
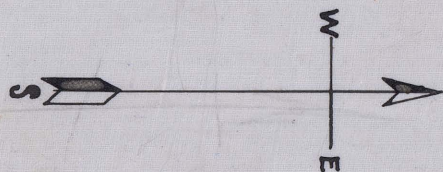
NO. 1056

LOCATED IN PARIS TOWNSHIP

UNION COUNTY, O.

1915-16

Charles E. Blain, Engineer.



Begins V.M.S. 3350
Ends V.M.S. 3350
Total Acres Drained 296.03 Box 398
See Beach Extension Ditch, No. 1279