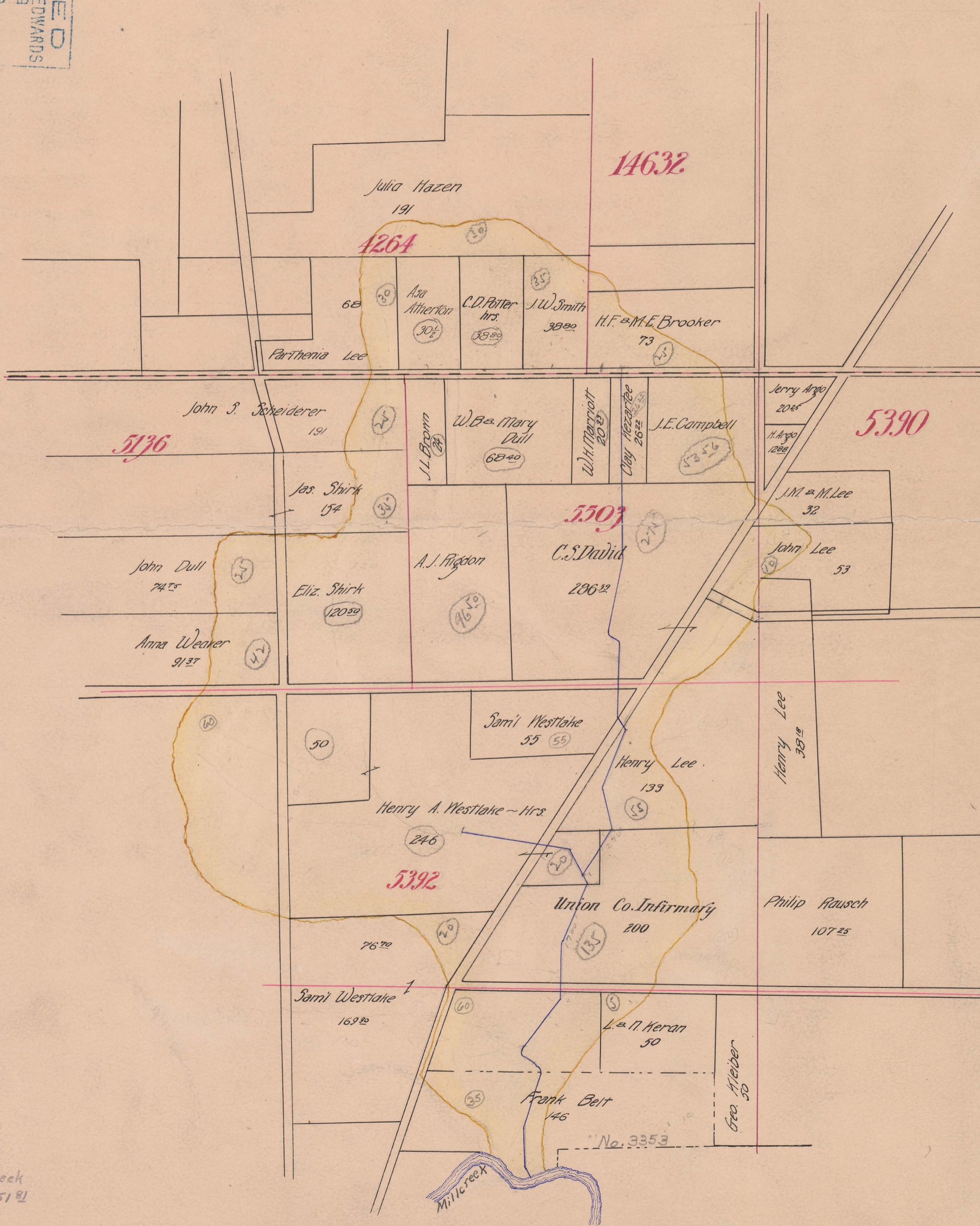


INFIRMARY DITCH NO. 830

PARIS TOWNSHIP 1908

FILED  
D WIGHT B EDWARDS  
1908  
AUG 15  
COUNTY AUDITOR  
UNION COUNTY, O.



Begins V.M.S. 5392  
Ends V.M.S. 3353 - Millcreek  
Total Acres Drained 1,751.81  
Box 368