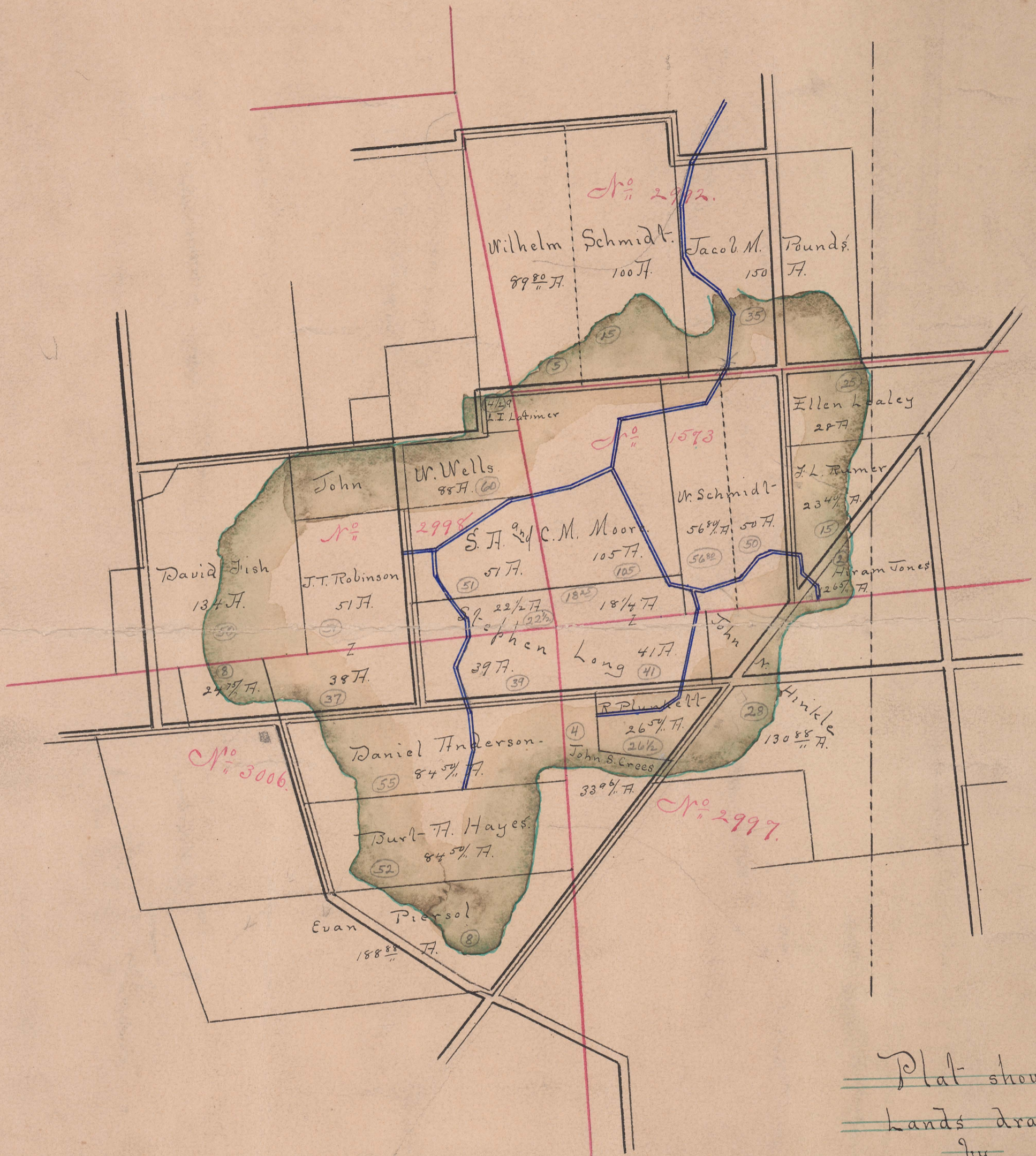


POUNDS DITCH NO. 483

MILLCREEK TOWNSHIP 1897



Plat showing
 Lands drained
 by
 Pounds Ditch.
 No. 483

Begins V.M.S. 2998
 Ends V.M.S. 2992 - Millcreek
 Total Acres Drained 864 35

Box 254
 Same as Long Ditch No. 888