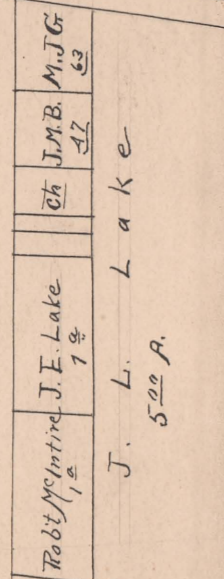
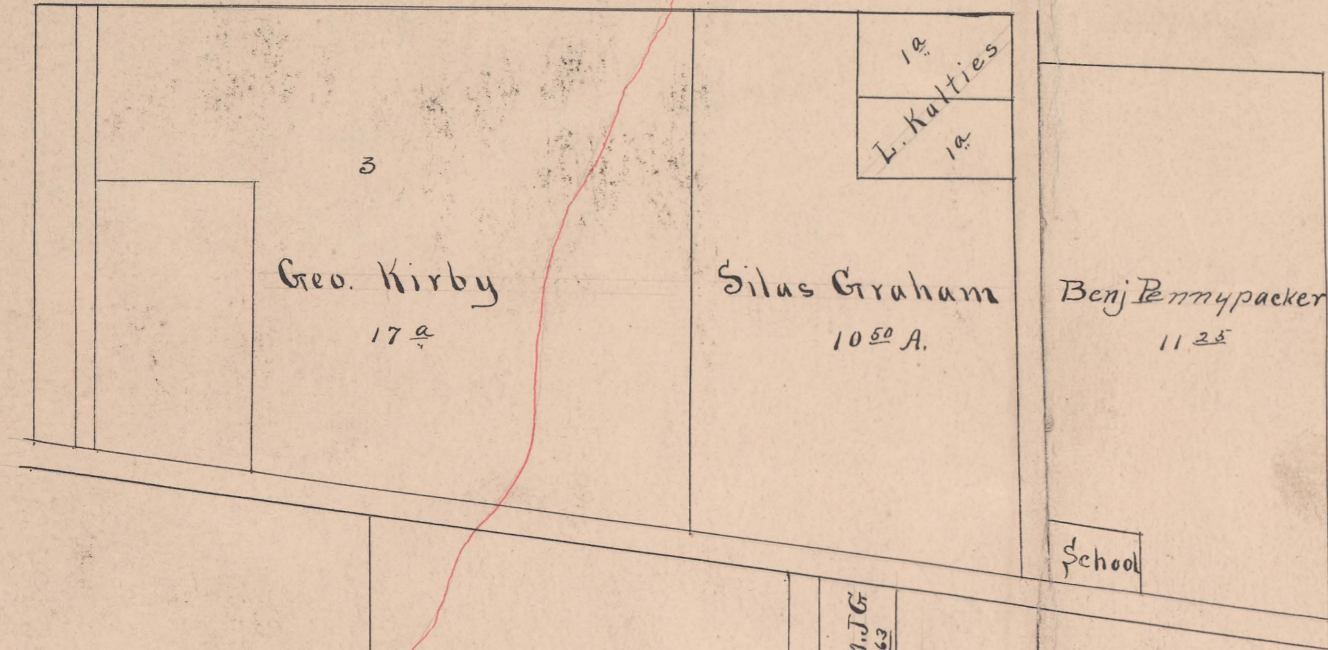


# ORAVILLE

FILED  
 DWIGHT B. EDWARDS  
 DEC 23 1903  
 COUNTY AUDITOR  
 UNION COUNTY, O.



Clyde B. Thompson  
 27<sup>00</sup> A.

Sarah M. Minthorn  
 29<sup>00</sup> A.

Geo. Kirby  
 17<sup>00</sup> A.

FILED  
 DWIGHT B. EDWARDS  
 DEC 23 1903  
 COUNTY AUDITOR  
 UNION COUNTY, O.

Begins V.M.S. 5477 - Millcreek  
 Ends V.M.S. 3244 - Jerome - Snok Run Ditch  
 Total Acres Drained 218<sup>35</sup>  
 Box 292

# KIRBY DITCH

NO. 646 MILLCREEK & JEROME TOWNSHIP 1903

