

WINKLE DITCH NO. 1144
 LIBERTY TWP
 - 1922 -
 W.P. Beightler
 Co. Eng.

32.96

V.M.S. 3443

Irena

Worbs

W.A. Smithson

Hutson Smith

10⁷⁵

21⁰⁰

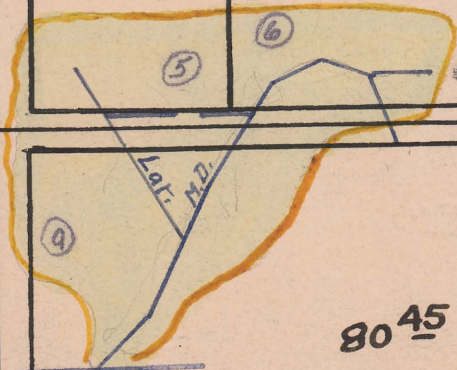
34⁰⁰

A.S.K. Roberts

10²⁵

239-A

249-C



80⁴⁵

Figley Ditch

Jas.

Winkle

249-B

FILED
 MAR 3 1922
Lowell Robinson
 COUNTY CLERK

Begins V.M.S. 3443
 Ends V.M.S. 3443
 Total Acres Drained 20.00
 Box 357