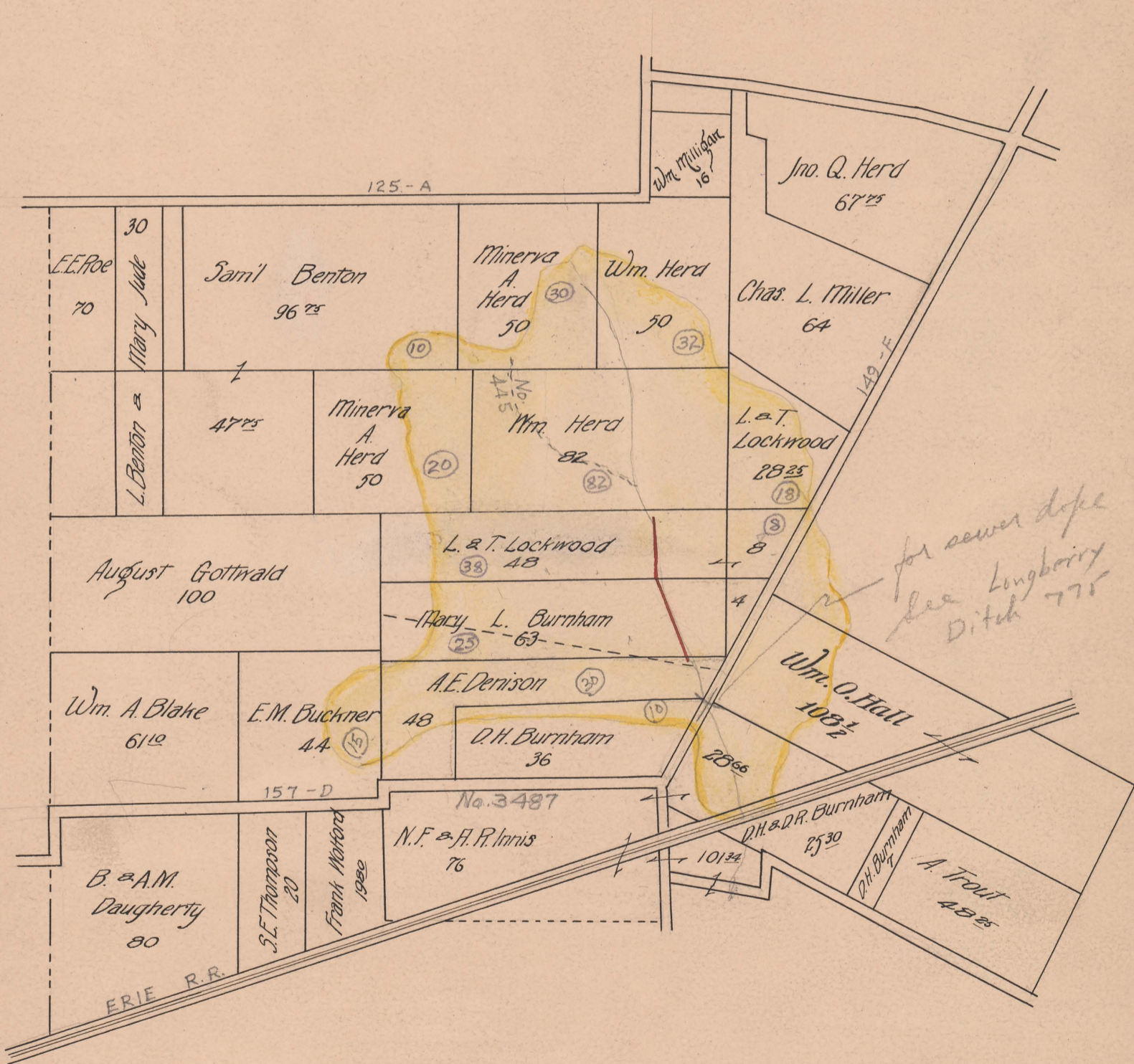


HERD DITCH NO. 835

LIBERTY TOWNSHIP

1908



Begins V.M.S. 3487

Ends V.M.S. 3487 - Erie R.R.

Total Acres Drained 264 00

Box, 368

(See Engineer's Report for Location.)

Open
 & Tile 8", 10", 12", 13 1/2", 15", 18"