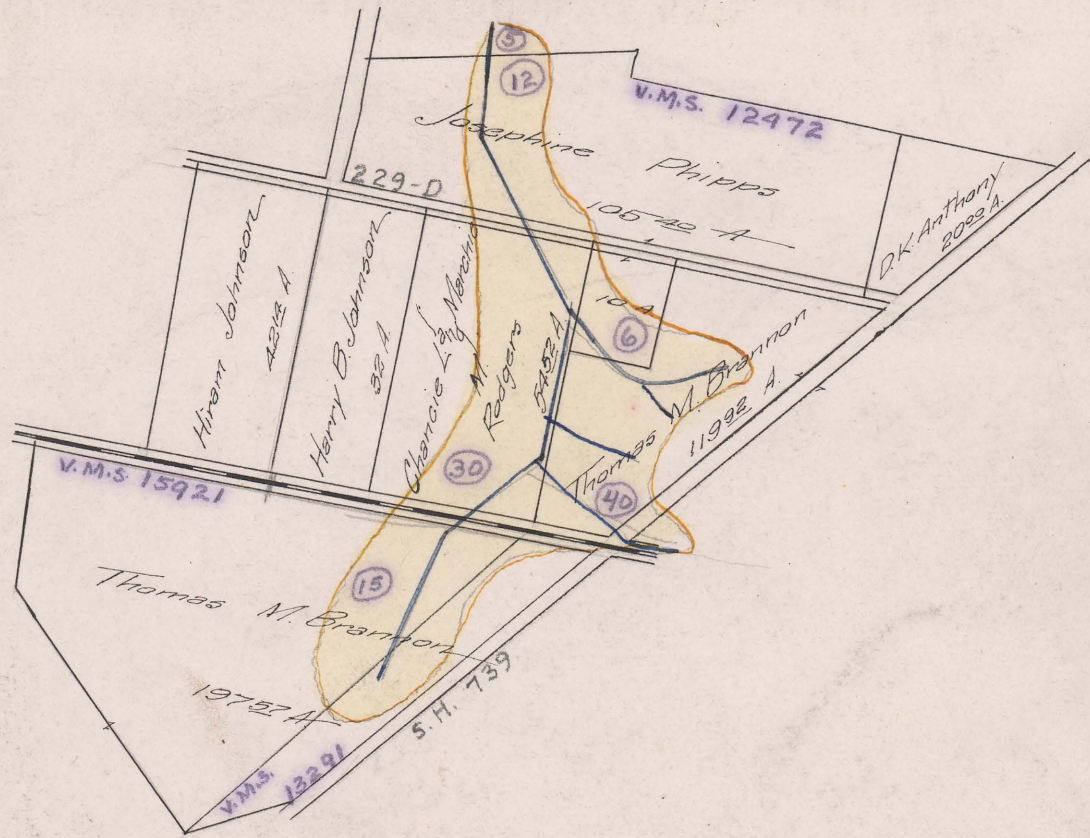
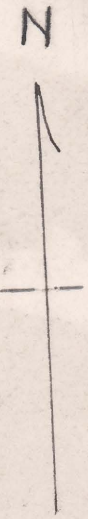


BRANNAN DITCH

N=959

Liberty Tp.

~ 1910 ~



FILED
BERT J. SHELTON
OCT
15
1910
COUNTY AUDITOR
UNION COUNTY, MO

Begins V.M.S. 13291
Ends V.M.S. 12472 - Perry Branch Ditch #80
Total Acres Drained 108 1/2
Box 405