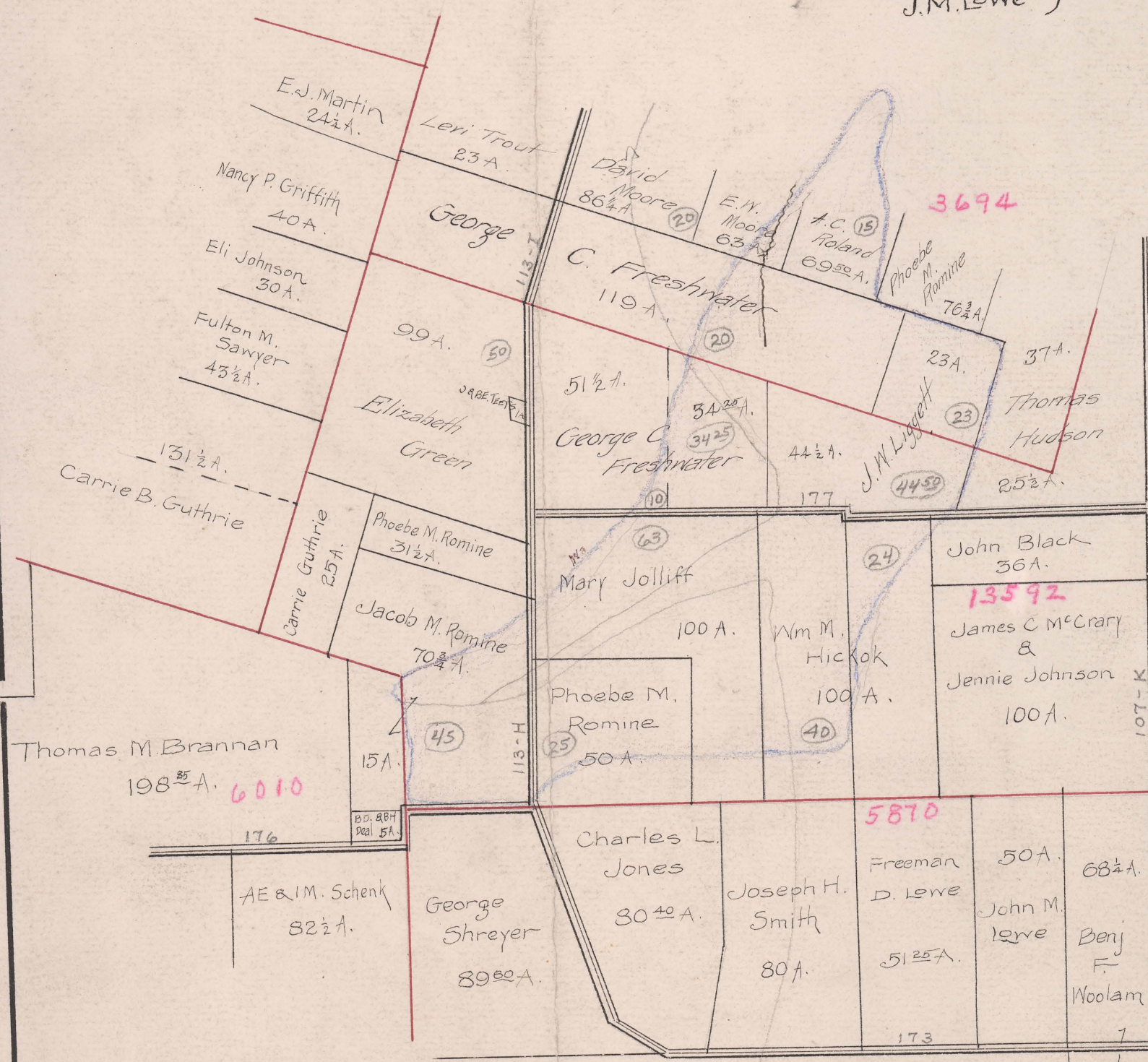


GRASSY RUN - IMPROVEMENT

1904

LEESBURG TOWNSHIP

O.B. Davis }
B.L. Robinson } Co. Commissioners
J.M. Lowe }



See apportionment sheet
Grassy Run No 398-yr 1894
Box 218

See Papers
Box 326

FILED
DWIGHT B. EDWARDS
NOV
26
1904
COUNTY AUDITOR
UNION COUNTY O

Lanson B. Harvey, Engineer