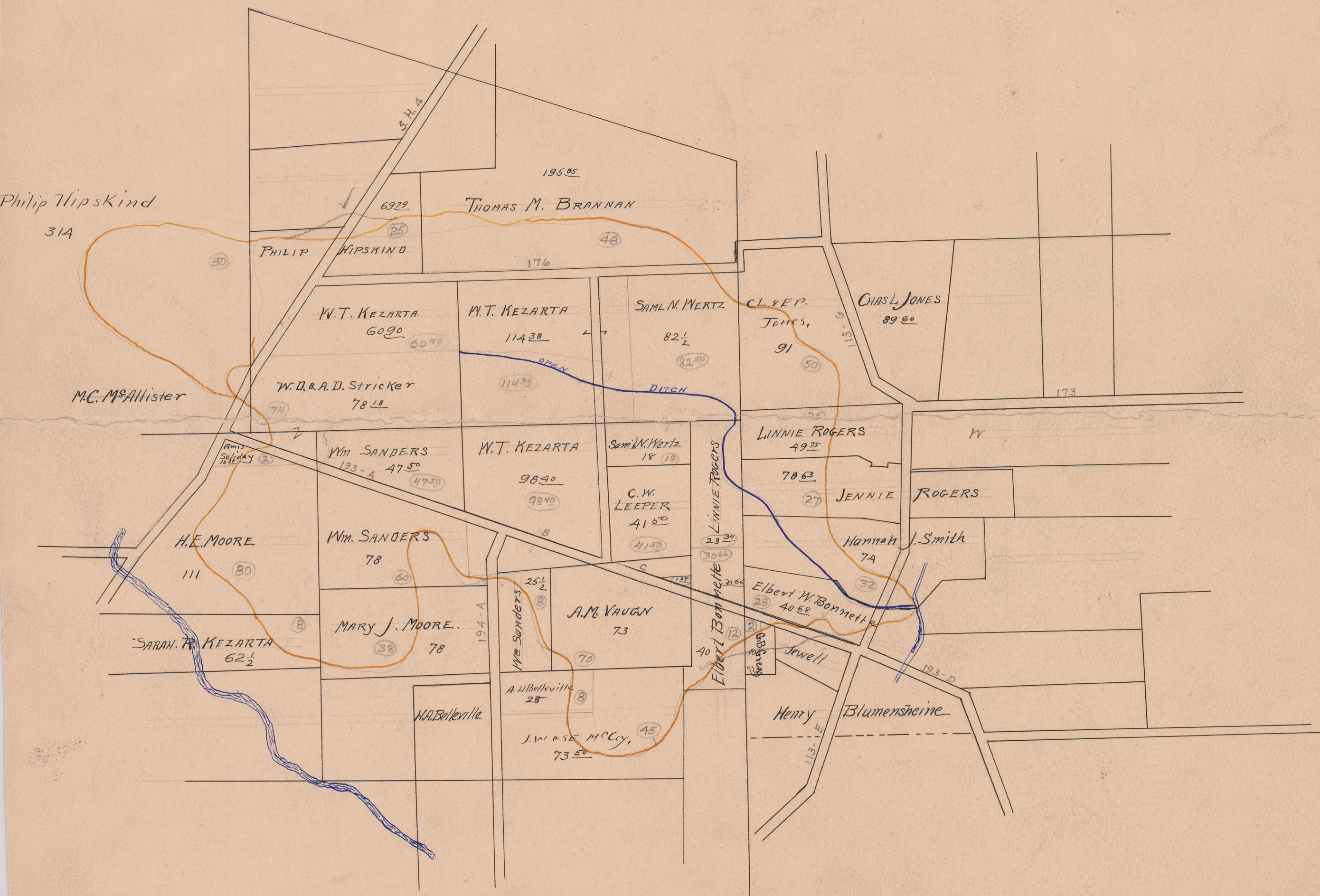


# GRASSY RUN DITCH

~ No. 818 ~

LEESBURG TOWNSHIP 1907

FILED  
DWIGHT R. EDWARDS  
JUN 24  
1907  
COUNTY AUDITOR



Begins V.M.S. 6010  
Ends V.M.S. 5870 - Grassy Run  
Total Acres Drained 1,190 47  
Box 367