

DOUGLASS DITCH

No. 1035

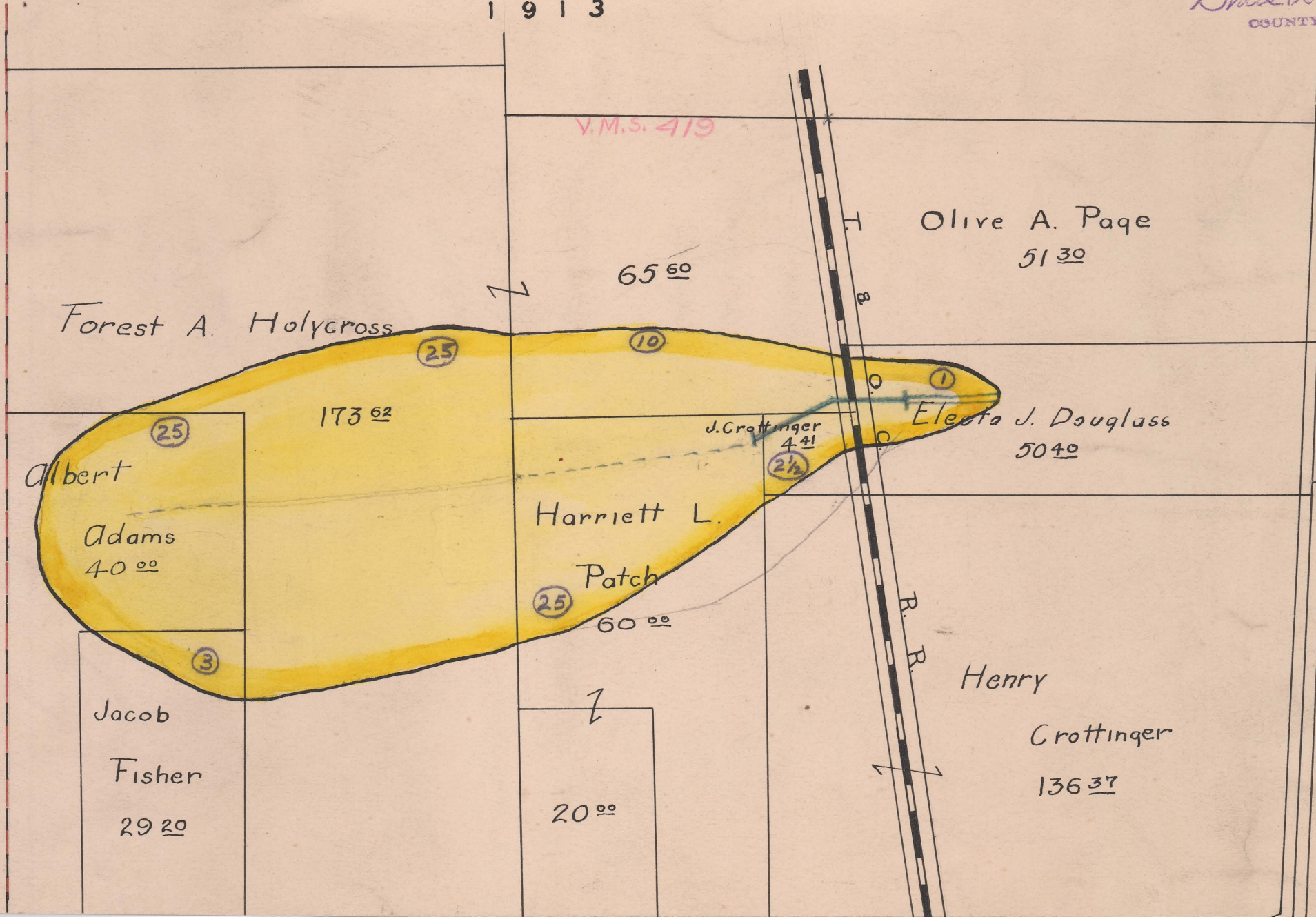
JEROME TOWNSHIP

1913

FILED

JAN 31 1914

Chas A. Mordock
COUNTY AUDITOR.



Begins V.M.S. 419
Ends V.M.S. 419 - Sugar Run
Total Acres Drained 91.50
Box 403
See Patch Ditch No. 717