

To Hollow Run

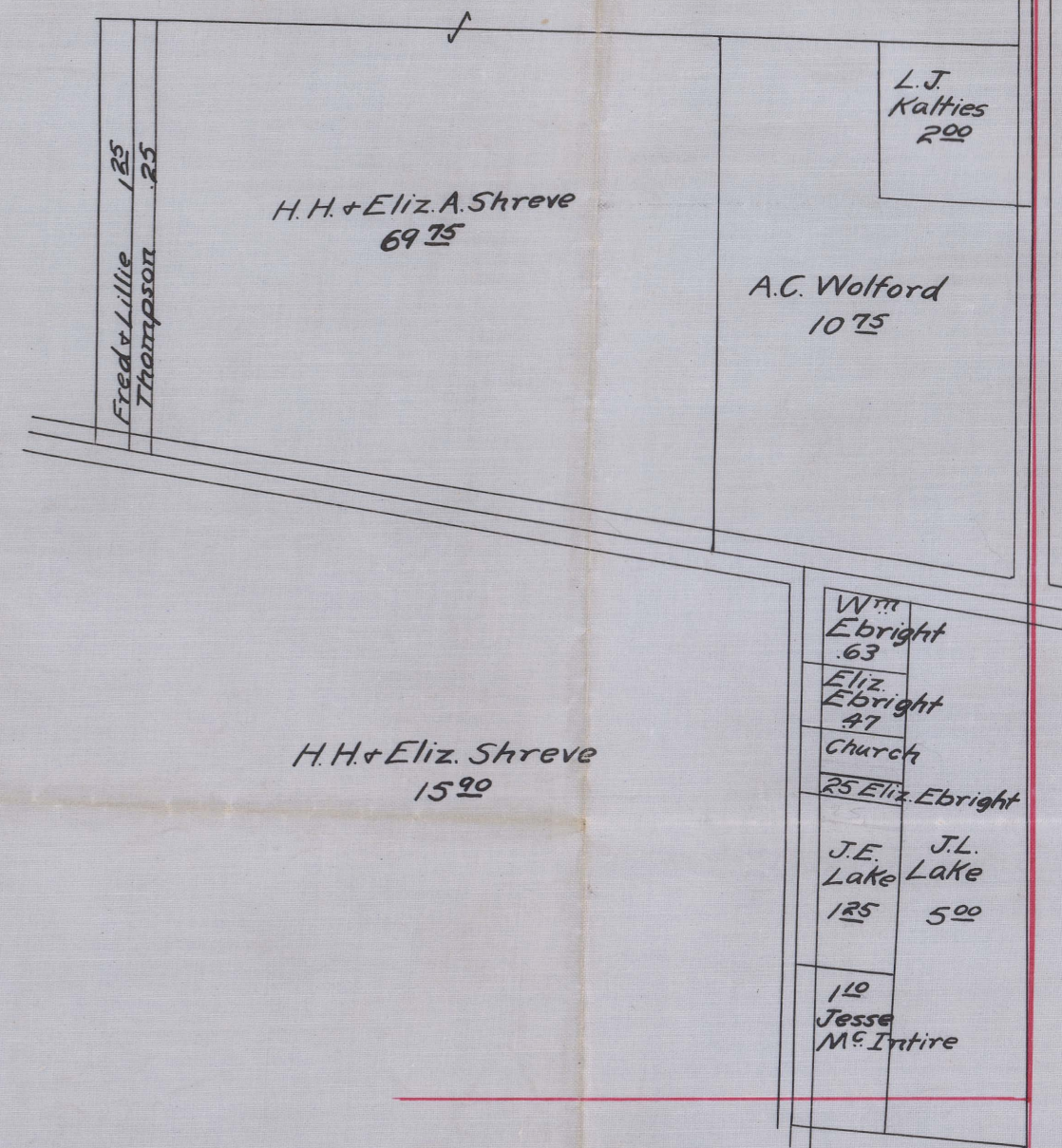
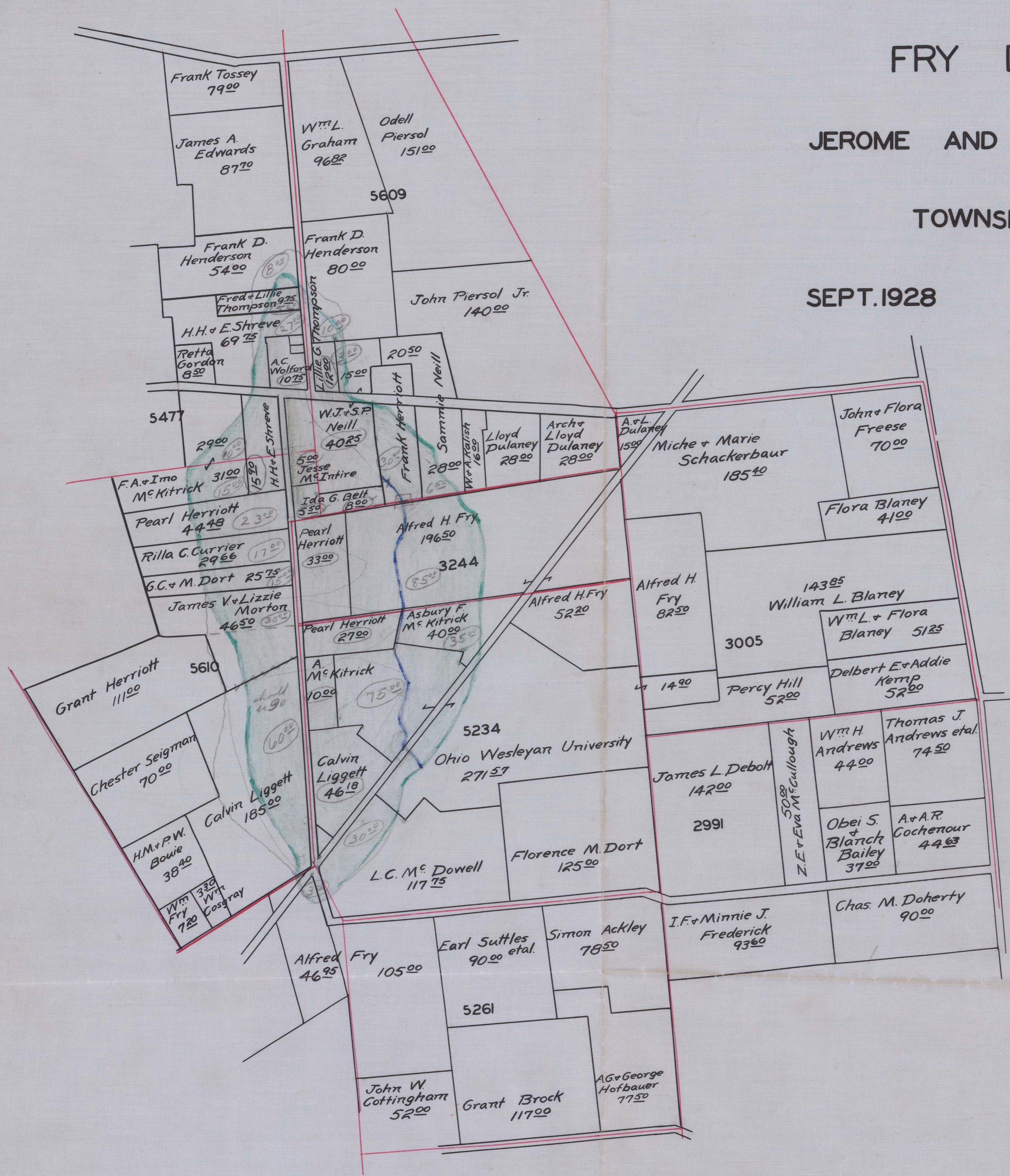
# FRY DITCH - see Box 296 in Auditor's vault for papers

## JEROME AND MILLCREEK

## TOWNSHIPS

SEPT. 1928

NO. 1221



X Begins V.M.S. 5609 Millcreek Twp.  
Ends V.M.S. 5234 Jerome Twp.  
Total Acres Drained 711.78 Box 296