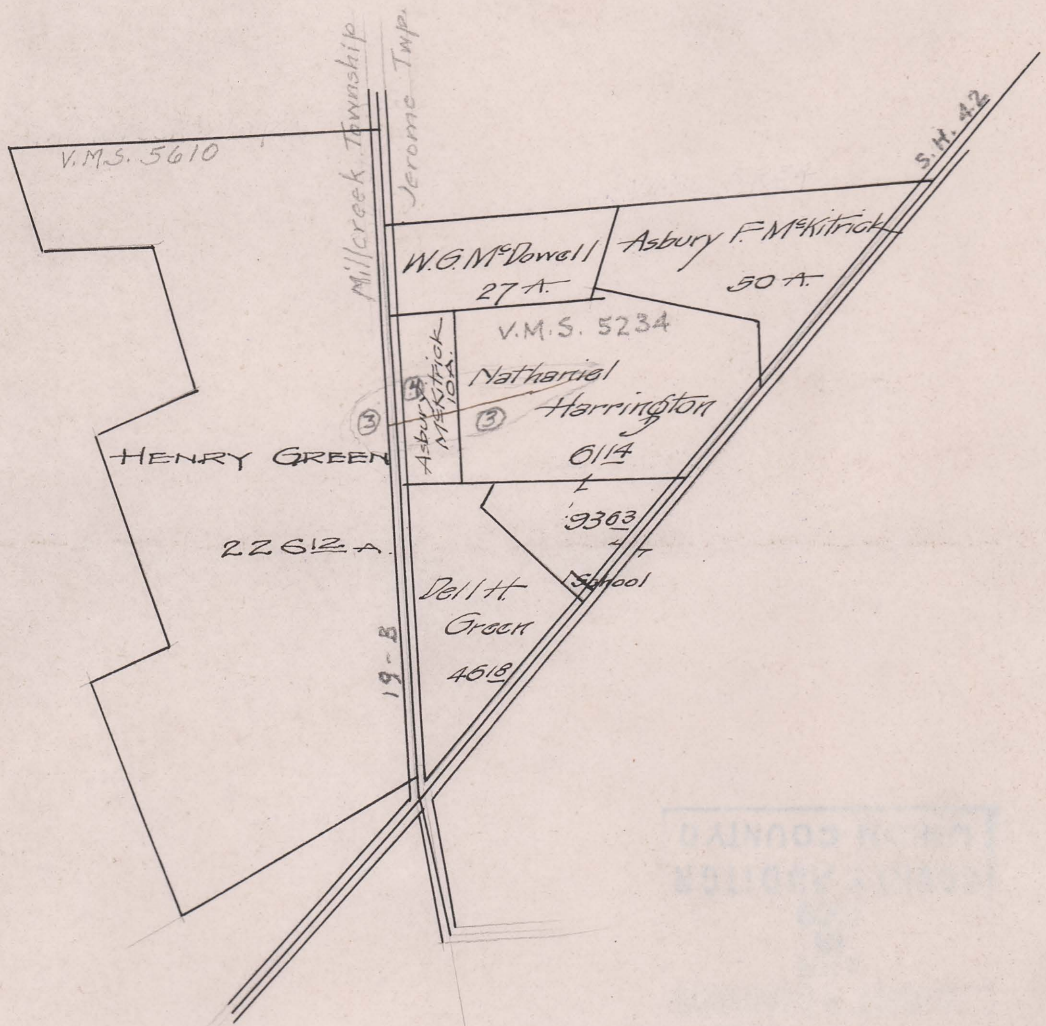


JEROME - MILLCREEK TOWNSHIP

# HARRINGTON DITCH

— No. 989 —

- 1911 -



Begins V.M.S. 5610 - W. side Rd. Millcreek Twp.

Ends V.M.S. 5234 - Jerome Twp.

Total Acres Drained 10<sup>00</sup>

Box 408