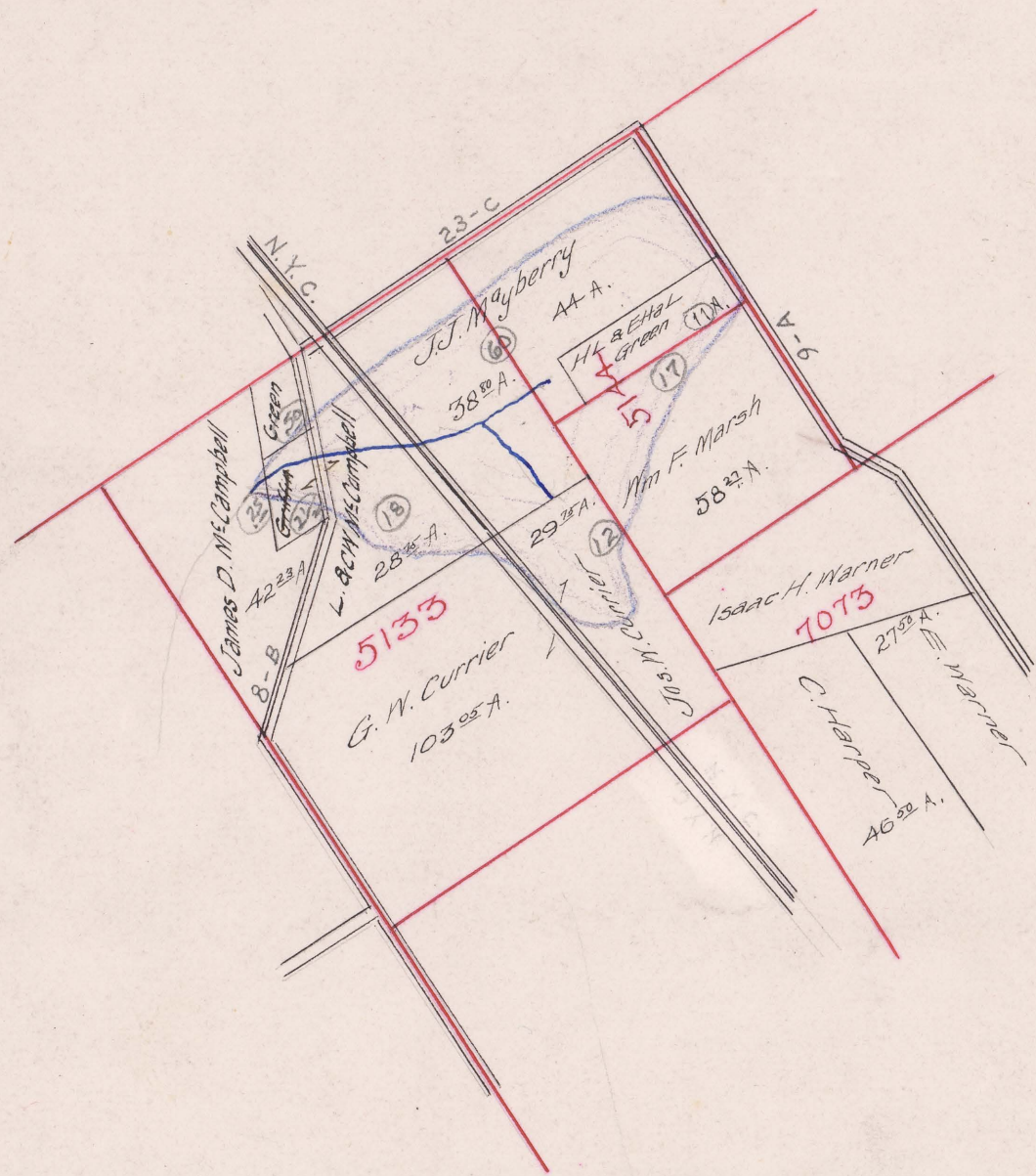


Jerome

# MAYBERRY DITCH

NO 677

JEROME TOWNSHIP 1904



Lanson B. Harvey, Engineer.

FILED  
 WIGHT B. EDWARDS  
 SEP 3 1904  
 COUNTY AUDITOR  
 JEROME COUNTY

Begins V.M.S. 5144  
 Ends V.M.S. 5133  
 Total Acres Drained 11025  
 Box 325