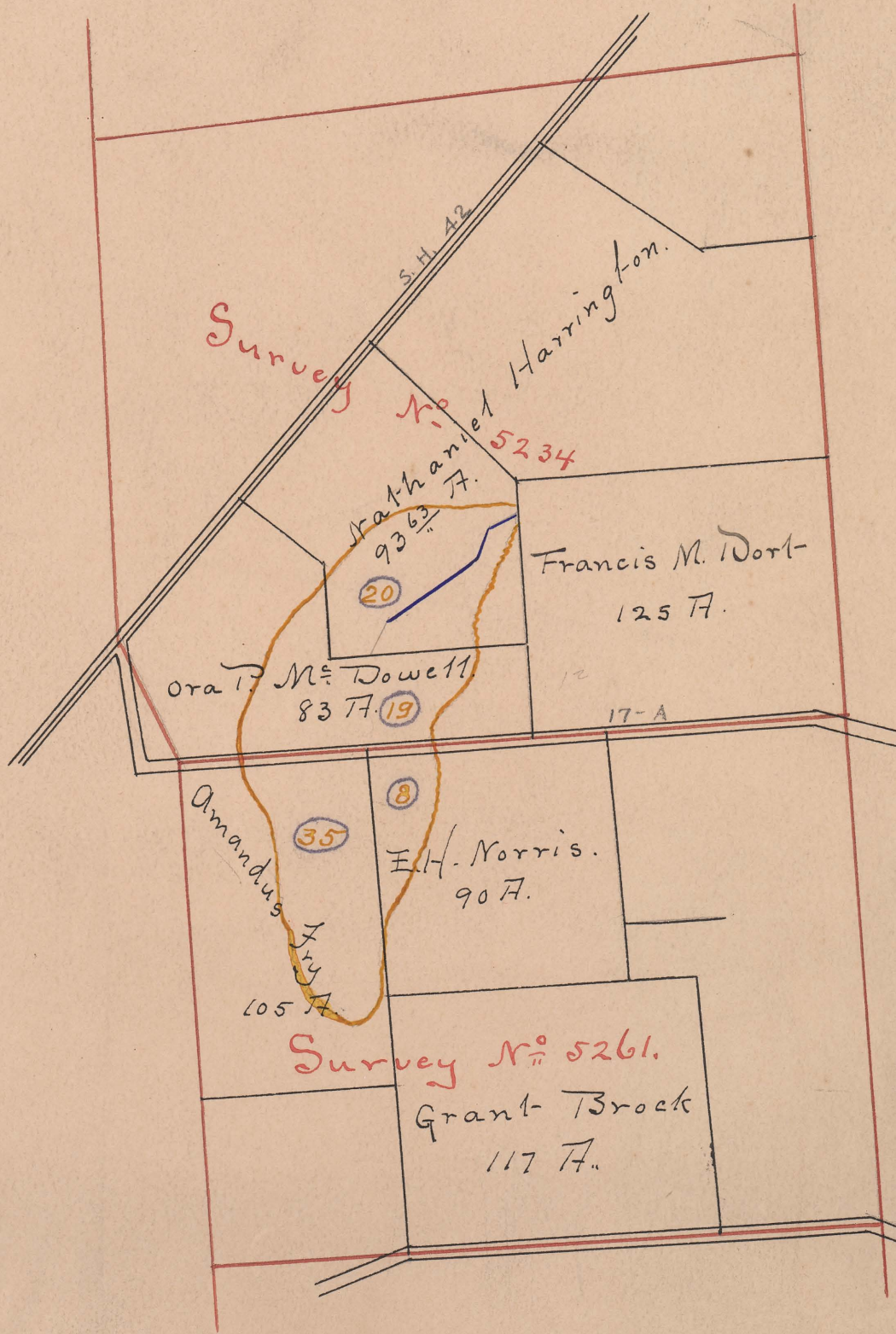


Dort Ditch No. 891.

JEROME TOWNSHIP 1908



FILED
WIGHT S. EDWARDS
DEC
14
1908
COUNTY AUDITOR
JEROME COUNTY

1908

Begins V.M.S. 5234
Ends V.M.S. 5234 - Open Ditch
Total Acres Drained
Box 399 (Dort Ditch No. 1094 Yr. 1918 without Plat)