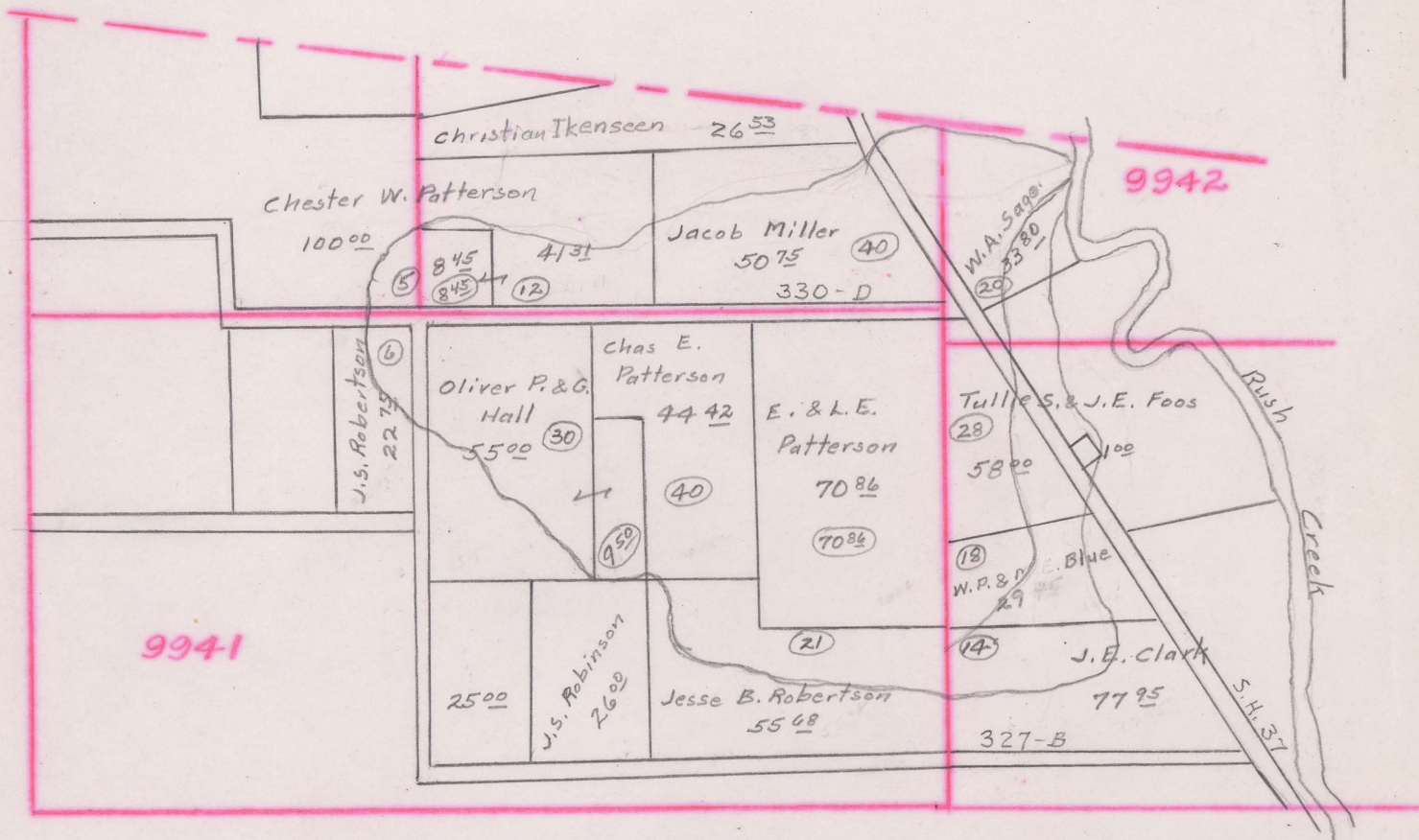


Patterson Ditch
&

FOOS DITCH NO. 1145

JACKSON TOWNSHIP 1922



Begins V.M.S. 9942

Ends V.M.S. 9942 - Rush Creek

Total Acres Drained 330⁸¹

Box 357

Tile 15", 20"

Boundary estimated from
apportionments

Estimated (Same Patterson No. 643)