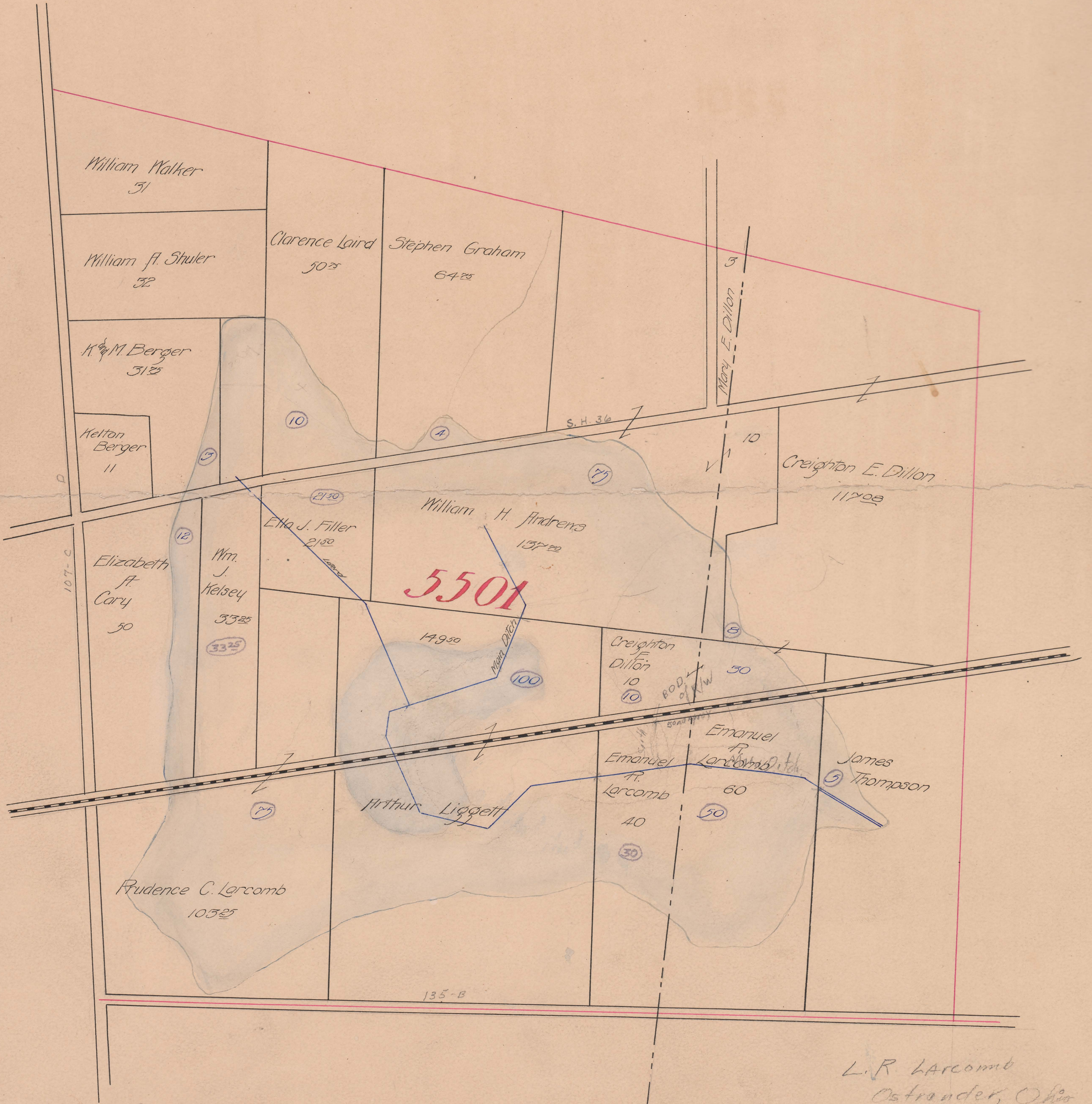


LIGGETT JOINT DITCH - NO. 843

~ LOCATED IN ~

Union and Delaware Counties

1908



L. R. Larcomb
Ostrander, Ohio

Begins V.M.S. 5501 - Dover Twp
Ends V.M.S. - Scioto Twp. - Delaware Co.
Total Acres Drained 373 75
Box 369

Repair 1933.
A.D. 298 25
Box 369 Location sheet Missing