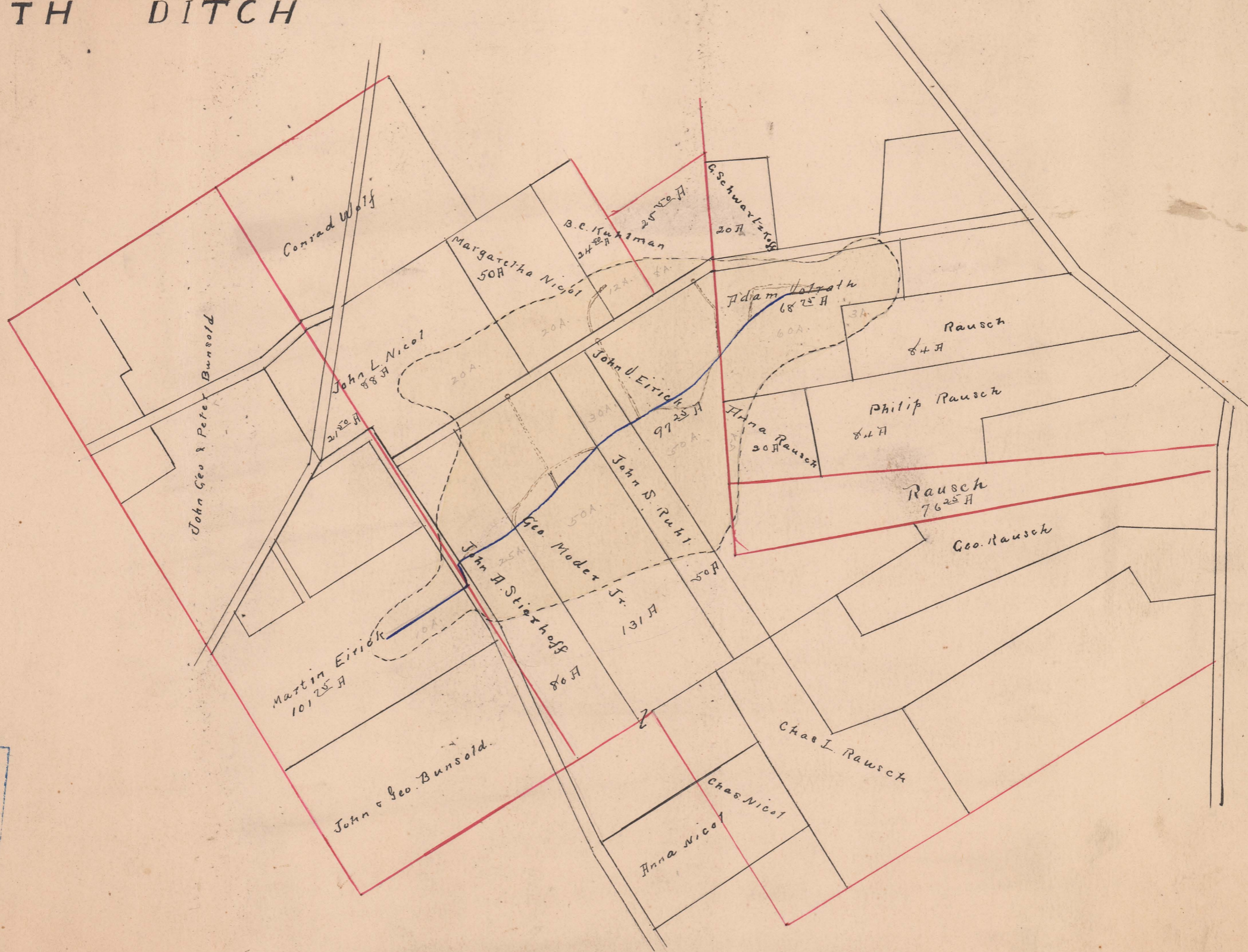


VOLRATH DITCH

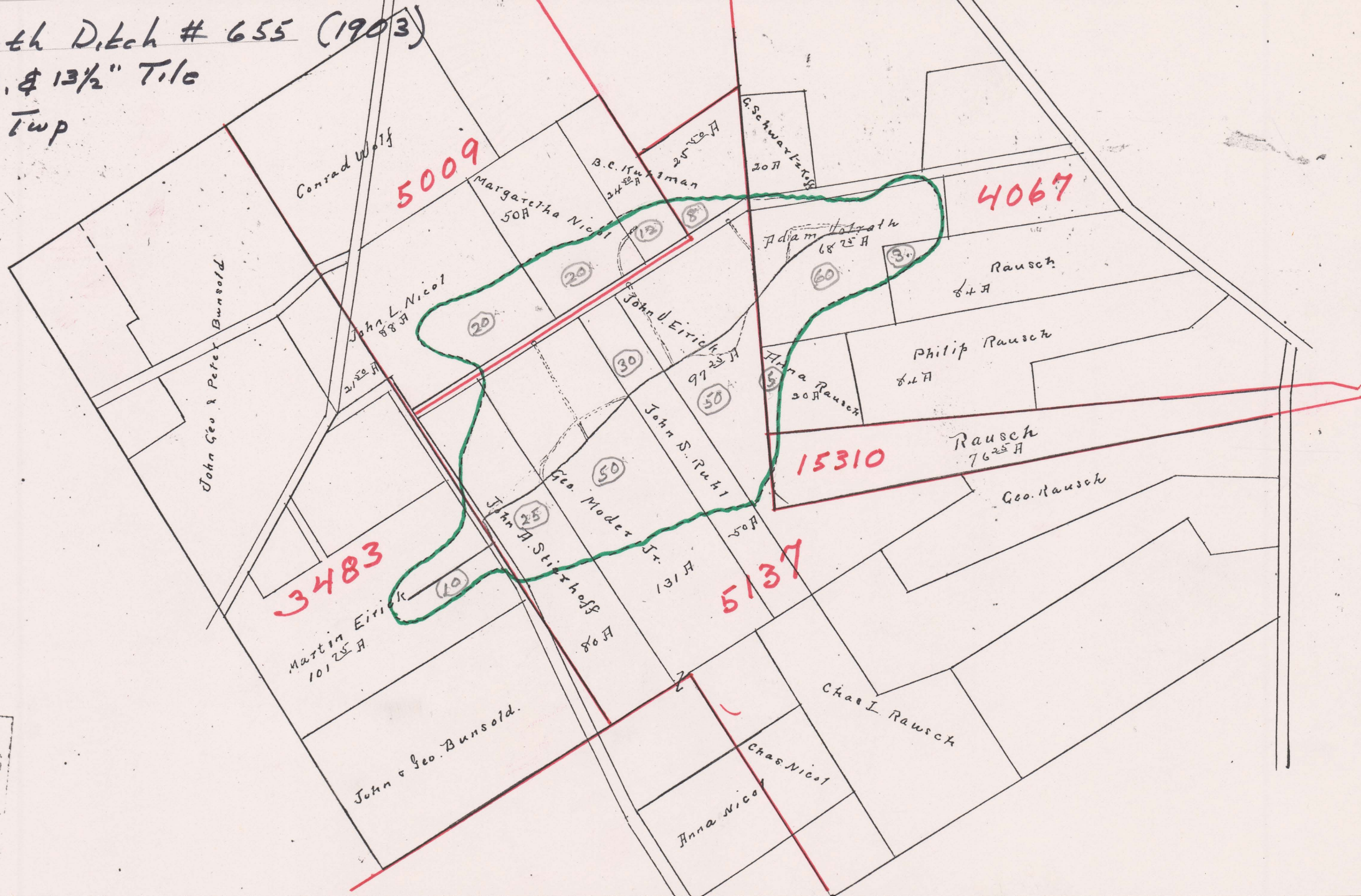


FILED
DWIGHT B. EDWARDS
AUG
8
1903
COUNTY AUDITOR
UNION COUNTY, O.

Vollrath Ditch # 655 (1903)

8, 10, 12, & 13 1/2" Tile

Darby Twp



FILED
 H.T. EDWARDS
 1903
 COUNTY AUDITOR
 IN COLLEGE

