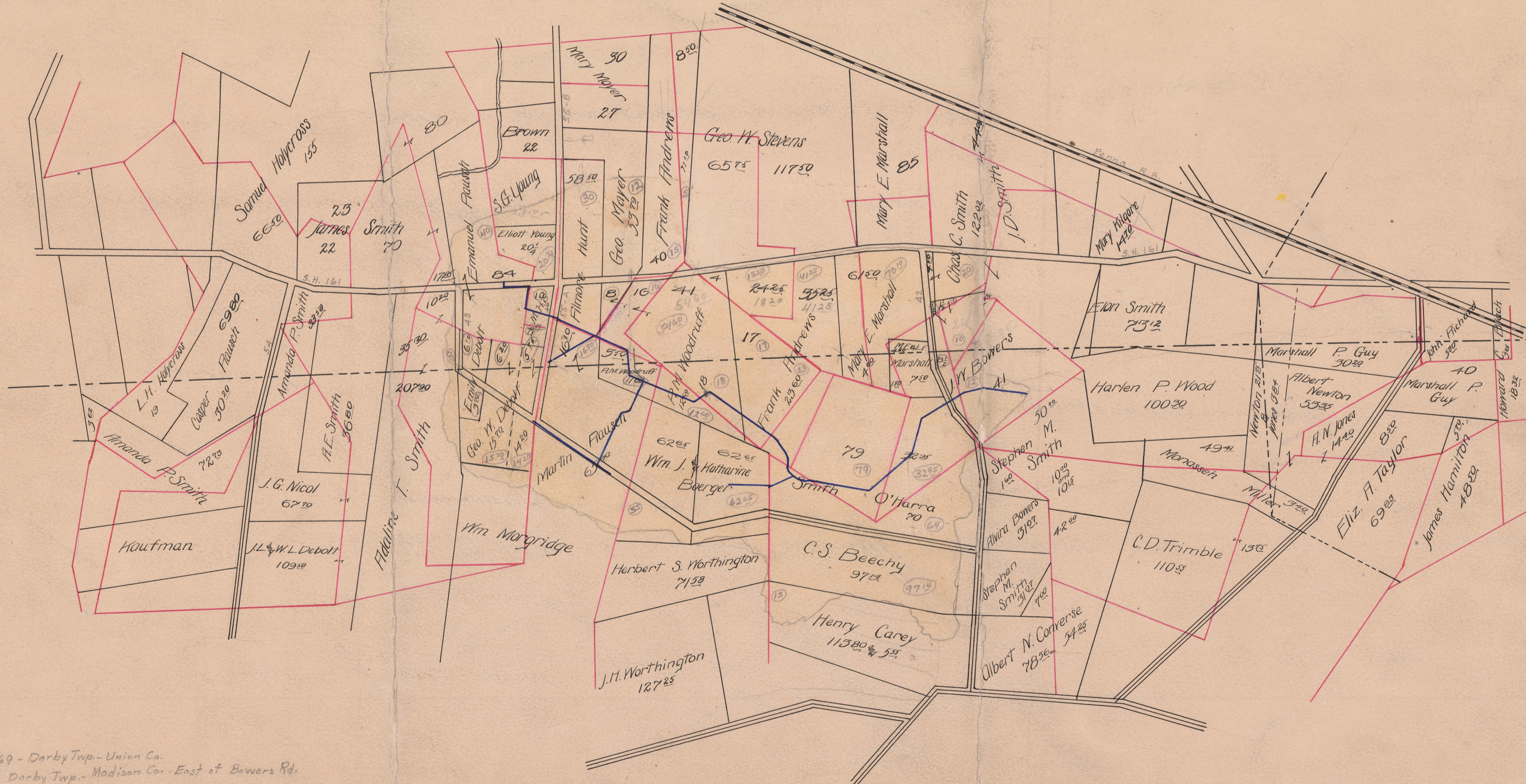


SWEENEY RUN JT. DITCH NO. 826.

LOCATED IN
Union and Madison Co's.
1907



Begins V.M.S. 12269 - Darby Twp. - Union Co.
Ends V.M.S. 7759 - Darby Twp. - Madison Co. - East of Bowers Rd.
Total Acres Drained 475 70
Box 368

SWEENEY RUN DITCH.

UNION COUNTY.

County Line.

MADISON COUNTY.

Begins V.M.S. 12269 Union Co. Darby Twp
Ends V.M.S. 7759 Madison Co. " "
Total Acres Drained 475.70. Union Co. Box 367



No. 12352

No. 10793 210a

Geo. M. Stevens.

No. 12269

No. 12270

No. 7759

No. 7759

No. 7732

No. 8839

No. 10957 12170

No. 11072

Boesger

Boyd

John P. Bowers
Cornelius Beehey

Chas. M. Worthington

Henry Cady

Phillip Rausch.

M. L. Young

Willmore Hill.

Geo. Magr.

J. D. Morse.

Anders.

W. H. H. H.

Adaline H. Smith

DEBATE

Kaline

A. M. Decolt.

William Young

Rausch

Russell

Boesger

28a

16a

79a

70a

6 Mrs. Church

10a

42a

S.H. 161

S.H. 161

42

70

80

90

100

110

120

130

140

150

160

170

180

190

200

210

220

230

240

250

260

270

280

290

300

310

320